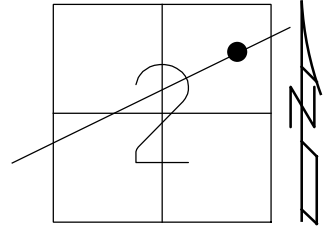


O.D.O.T. DISTRICT 2 SURVEY OFFICE (USE ONLY)

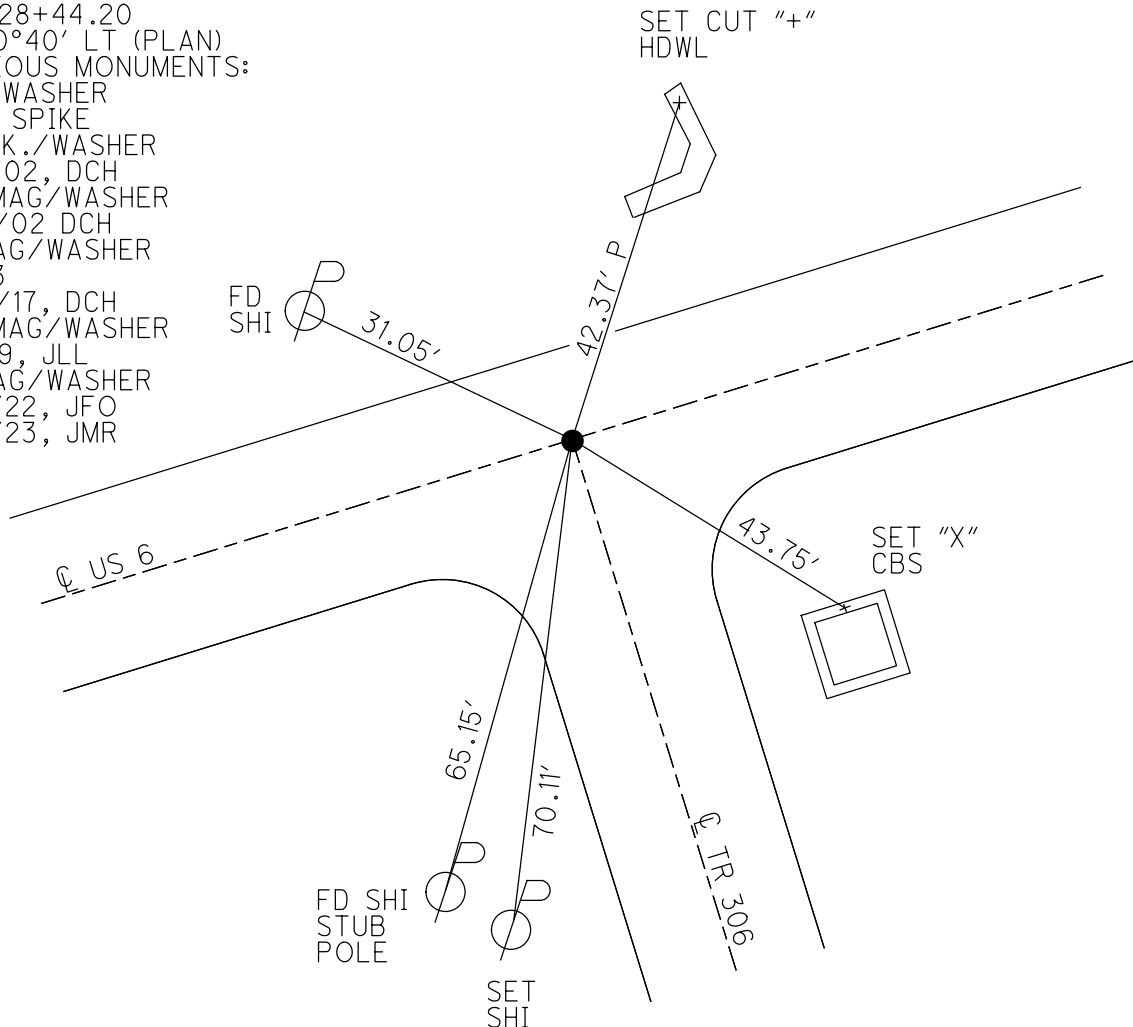
PERSONNEL _____ REFERENCE NO. 53 SHEET 31 OF 34
 NOTES LEU DATE 8/8/18 ROUTE US 6
 H.C. LEU WEATHER CLOUDY COUNTY SANDUSKY
 R.C. HAGEMeyer TEMP. 79° TOWNSHIP TOWNSEND
 DWG BY AUBLE PID PAVETRAIN SECTION 2
 T 5 N R 17 E

TYPE MONUMENT MAG/WASHER
 ON SURFACE - ~~BELOW~~ ON
 OFFSET Q PAVEMENT 0.4' RT : RT
12.6' TO LT EDGE PAVEMENT
 STATION: 1672+66



HORIZ.DATUM: NAD83 (2011) GEOID: 2012A
 GRID: NORTHING: 641281.303 EASTING: 1869018.816

RECORD: P.I.
 STA.128+44.20
 $\Delta = 00^{\circ}40'$ LT (PLAN)
 PREVIOUS MONUMENTS:
 P.K./WASHER
 BOAT SPIKE
 FD P.K./WASHER
 3/16/02, DCH
 SET MAG/WASHER
 9/25/02 DCH
 FD MAG/WASHER
 REF53
 11/23/17, DCH
 SET MAG/WASHER
 8-6-19, JLL
 FD MAG/WASHER
 2/10/22, JFO
 1/20/23, JMR

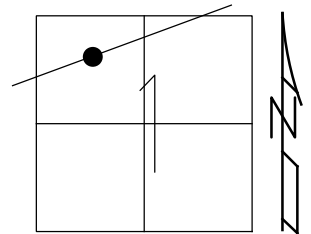


O.D.O.T. DISTRICT 2 SURVEY OFFICE (USE ONLY)

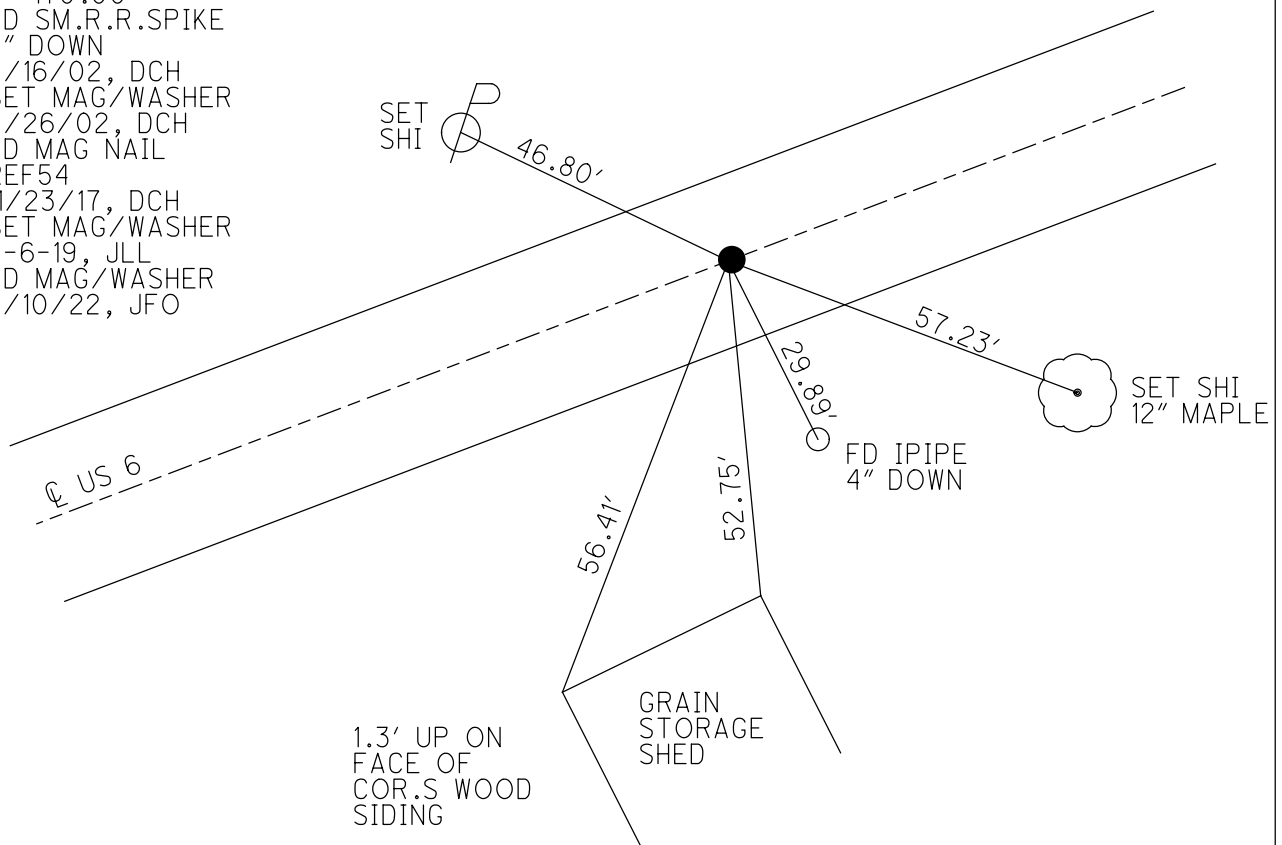
PERSONNEL _____ REFERENCE NO. 54 SHEET 32 OF 34
 NOTES LEU DATE 8/8/18 ROUTE US 6
 H.C. LEU WEATHER CLOUDY COUNTY SANDUSKY
 R.C. HAGEMEYER TEMP. 81° TOWNSHIP TOWNSEND
 DWG BY AUBLE PID 95769 SECTION 1
 T 5 N R 17 E

TYPE MONUMENT MAG/WASHER
 ON SURFACE - ~~BELOW~~ ON
 OFFSET C PAVEMENT 0.7' LT : RT
9' TO LT EDGE PAVEMENT
 STATION: 1694+22

HORZ.DATUM: NAD83 (2011) GEOID: 2012A
 GRID: NORTHING: 642081.760 EASTING: 1871022.002



RECORD: P.I.
 $\Delta = 01^\circ 42' \text{ RT}$
 STA. 150+00
 FD BOAT SPIKE
 2" DOWN
 STA. 143+88.70
 T = 85.00'
 L = 170.00'
 FD SM.R.R.SPIKE
 4" DOWN
 3/16/02, DCH
 SET MAG/WASHER
 9/26/02, DCH
 FD MAG NAIL
 REF54
 11/23/17, DCH
 SET MAG/WASHER
 8-6-19, JLL
 FD MAG/WASHER
 2/10/22, JFO



O.D.O.T. DISTRICT 2 SURVEY OFFICE (USE ONLY)

PERSONNEL

REFERENCE NO. 54

SHEET 32 OF 34

NOTES LEU

DATE 8/8/18

ROUTE US 6

H.C. LEU

WEATHER CLOUDY

COUNTY SANDUSKY

R.C. HAGEMeyer

TEMP. 81°

TOWNSHIP TOWNSEND

SECTION 1

DWG BY AUBLE PID 95769

T 5 N R 17 E

TYPE MONUMENT MAG/WASHER

ON SURFACE - ~~BELOW~~ ON

OFFSET 0.7' LT : ~~RT~~

9' TO LT EDGE PAVEMENT

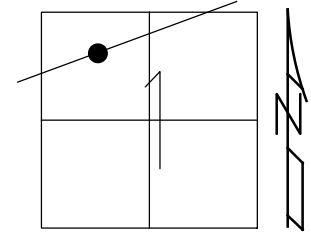
STATION: 1694+22

HORIZ.DATUM: NAD83 (2011)

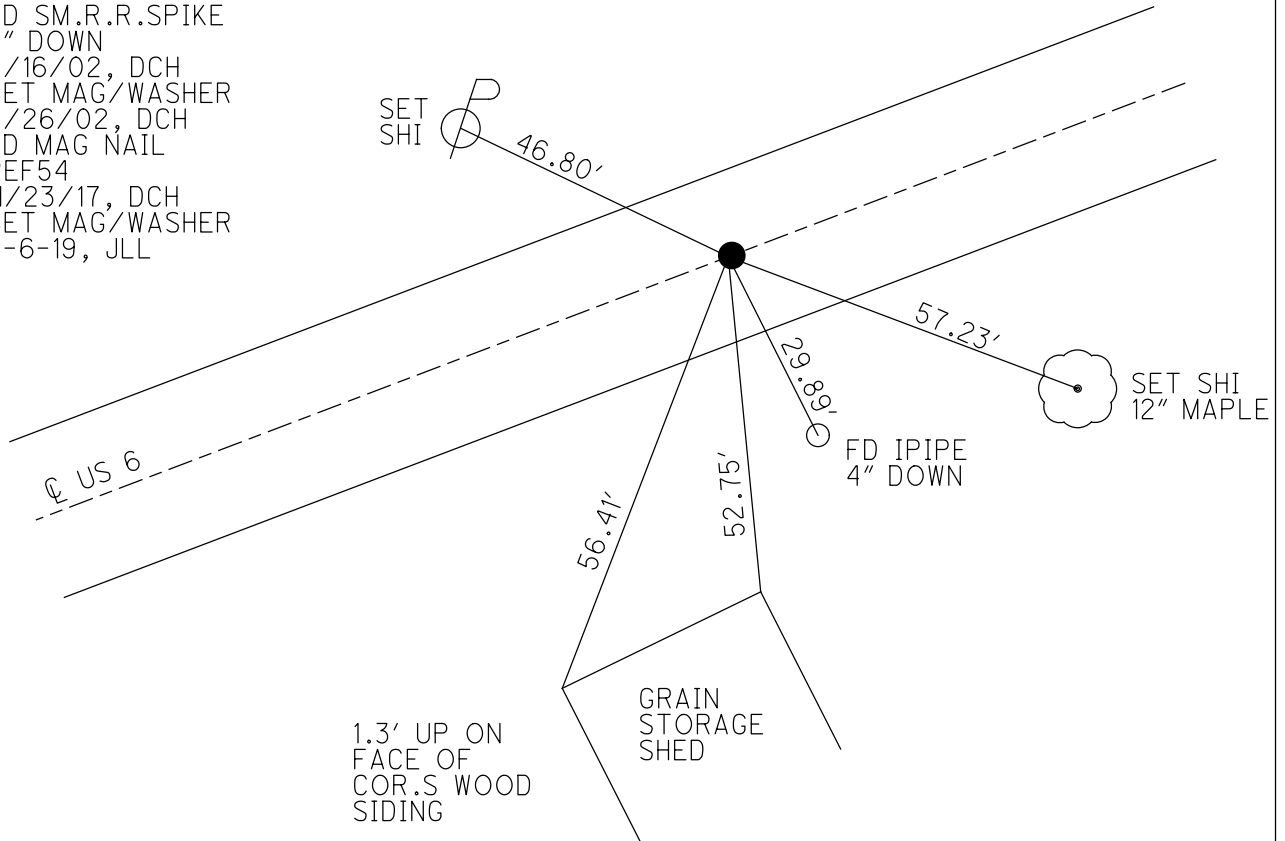
GEOID: 2012A

GRID: NORTHING: 642081.760

EASTING: 1871022.002



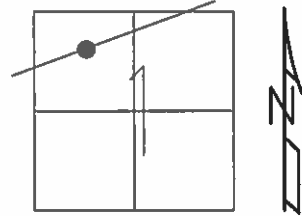
RECORD: P.I.
 $\Delta = 01^\circ 42' RT$
 STA.150+00
 FD BOAT SPIKE
 2" DOWN
 STA.143+88.70
 T= 85.00'
 L= 170.00'
 FD SM.R.R.SPIKE
 4" DOWN
 3/16/02, DCH
 SET MAG/WASHER
 9/26/02, DCH
 FD MAG NAIL
 REF54
 11/23/17, DCH
 SET MAG/WASHER
 8-6-19, JLL



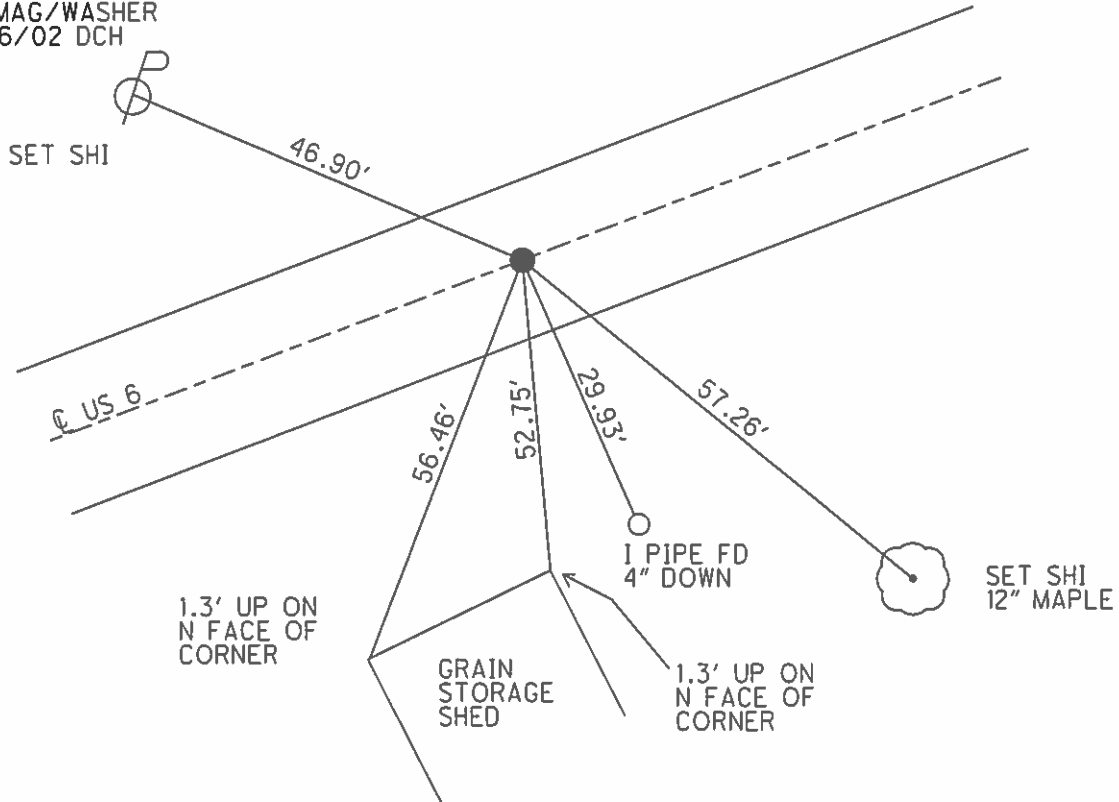
O.D.O.T. DISTRICT 2 SURVEY OFFICE (USE ONLY)

PERSONNEL	REFERENCE NO.	54	SHEET	29	OF	31
NOTES	ROUSOS	DATE	03/16/02	ROUTE	US 6	
H.C.	VAN DUSEN	WEATHER	WINDY	COUNTY	SANDUSKY	
R.C.	MOSSER	TEMP.	28°	TOWNSHIP	TOWNSEND	
	HOMAN			SECTION	1	
				T	5	N R 17 E

TYPE MONUMENT SM RR SPK
~~ON SURFACE~~ - BELOW 4"
 LEFT - Q PAV'T - ~~RIGHT~~ 1'
9' TO LT EDGE PAVEMENT
 S.L.M. 1694+22
 GRID: NORTHING: - EASTING: -



RECORD: PI
 $\Delta = 01^\circ 42' RT$
 STA 150+00
 BOAT SPIKE 2" BELOW SURFACE
 DATA CHANGED IN FIELD ON 1931
 PHOTOSTAT PLANS. DID AWAY WITH
 PI AT 143+88.70
 T=85.00 L=170.00
 SET MAG/WASHER
 09/26/02 DCH



Q.D.O.T. DISTRICT 2 SURVEY OFFICE

SHEET _____ OF _____

County Sandusky S. R. U.S. #6

Township Townsend

Section 1

T5N, R12E

Personnel Cronin

Ripple

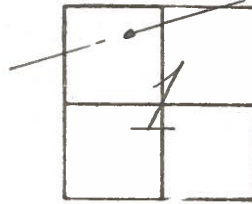
Geyman

Barbour

Date 9/26/84

Weather sunny-windy

Temp. 52°



10-3-91
 Could NOT FIND
 Did not Re-set
 Ripple

54



U.S. #6

P.I. A = 01° 42' Rt

150+00

boat spike 2" below surface

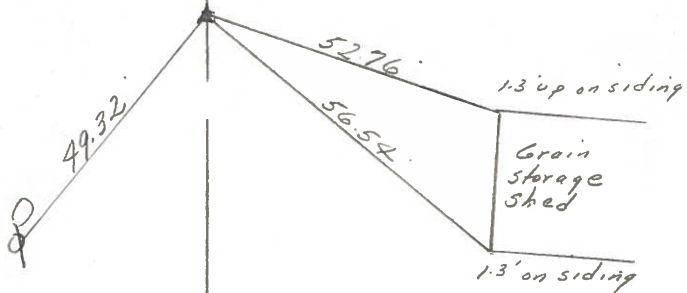
Data changed in field on 1931

Photostat Plans. Did away with P.I.

⊙ 143+8870

T = 85.00

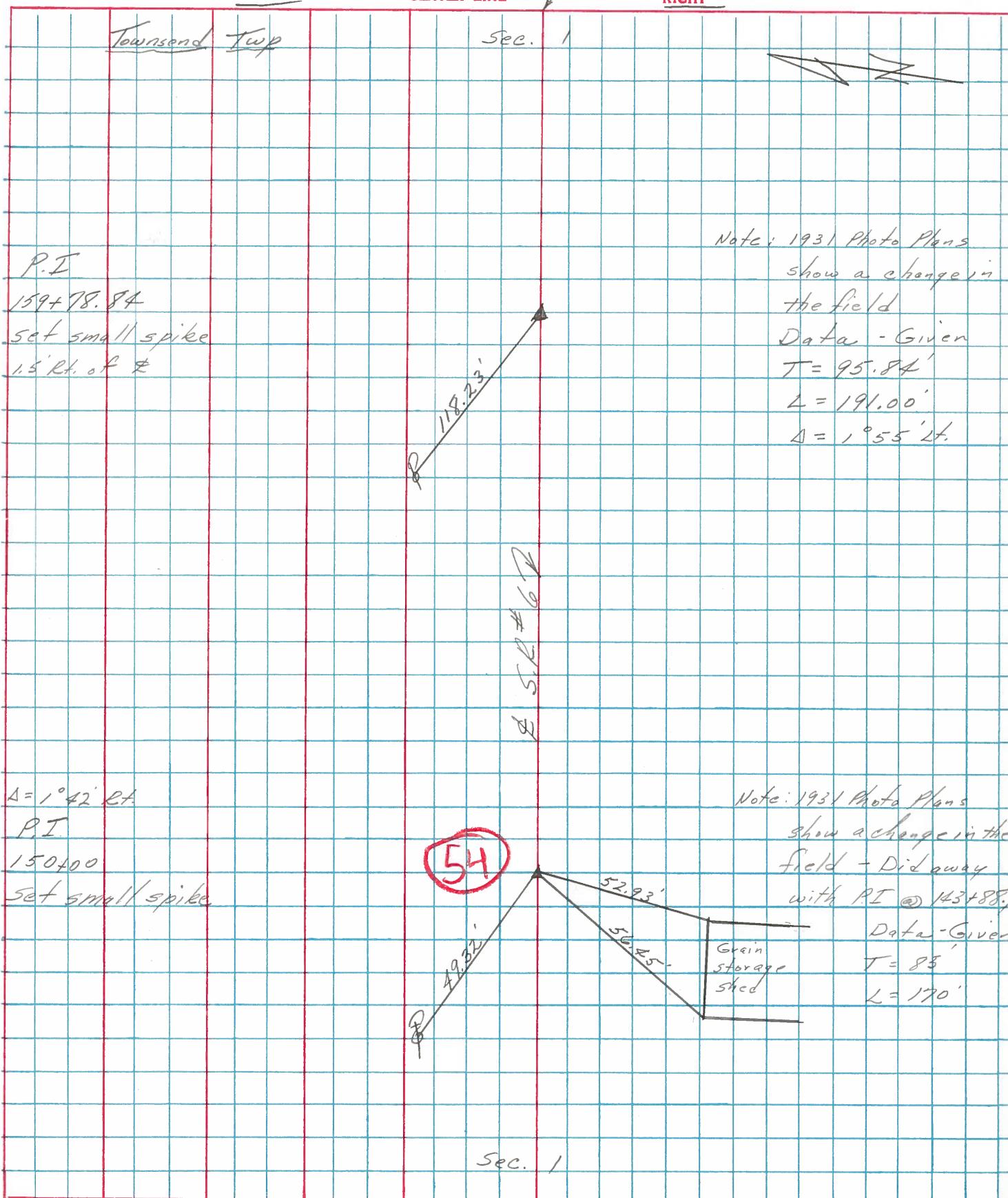
L = 170.00



PERSONNEL	TITLE	PERSONNEL	TITLE
Cronin		Schneider	
Ash		Mosser	
Ripple		Barbour	
Geyman			

COUNTY Sandusky DATE 8/5/75
 S. R. #6 WEATHER sunny
 SEC. H.J. - Fremont - East TEMP. 80°

DESCRIPTION Ties for Control Points LEFT CENTER LINE RIGHT JOB NO.



Note: 1931 Photo Plans show a change in the field
 Data - Given
 $T = 95.84'$
 $L = 191.00'$
 $\Delta = 1^{\circ}55' \text{ Lt.}$

Note: 1931 Photo Plans show a change in the field - Did away with P.I. @ 143+88.8.
 Data - Given
 $T = 85'$
 $L = 170'$