

O.D.O.T. DISTRICT 2 SURVEY OFFICE (USE ONLY)

PERSONNEL

REFERENCE NO. 54 A

SHEET 33 OF 34

NOTES LEU

DATE 8/8/18

ROUTE US 6

H.C. LEU

WEATHER SUNNY

COUNTY SANDUSKY

R.C. HAGEMeyer

TEMP. 70

TOWNSHIP TOWNSEND

DWG BY AUBLE

PID 95769

SECTION 1

T 5 N R 17 E

TYPE MONUMENT MAG/WASHER

ON SURFACE - ~~BELOW~~ ON

OFFSET 1.5' RT : RT

10.6' TO RT EDGE PAVEMENT

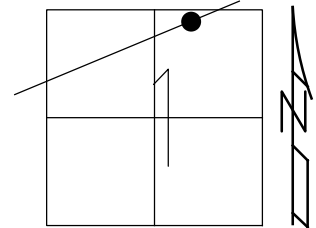
STATION: 1704+03

HORZ. DATUM: NAD83 (2011)

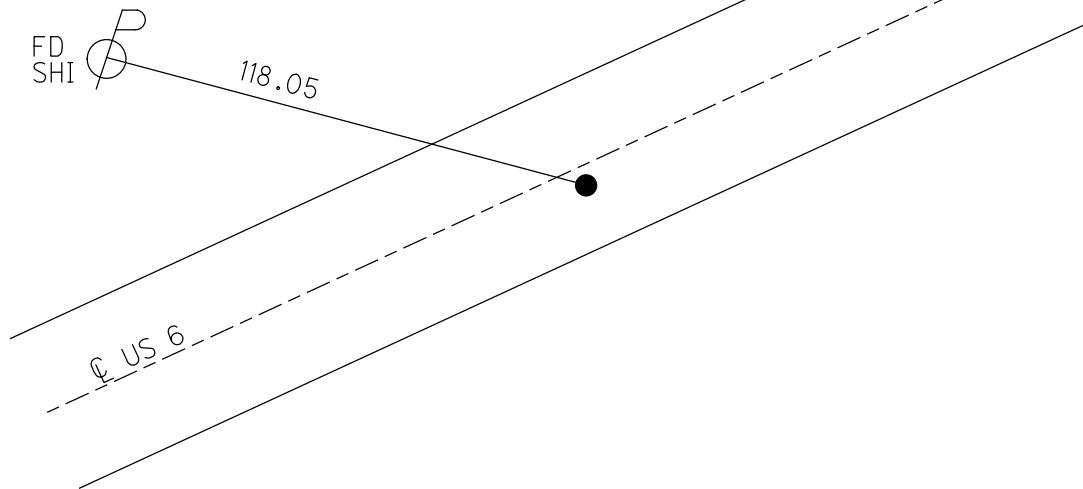
GEOID: 2012A

GRID: NORTHING: 642417.881

EASTING: 1871941.628



RECORD: P.I.
 STA. 159+78.84
 $\Delta = 01^\circ 55' \text{ LT}$
 PREVIOUS MONUMENTS:
 P.K./WASHER
 BOAT SPIKE
 T = 95.84'
 L = 191.00'
 FD P.K./WASHER
 3/16/02, DCH
 SET MAG/WASHER
 9/26/02 DCH
 FD MAG/WASHER
 REFA54
 11/23/17, DCH
 SET MAG/WASHER
 7-15-19, JLL
 FD MAG/WASHER
 2/10/22, JFO



O.D.O.T. DISTRICT 2 SURVEY OFFICE (USE ONLY)

PERSONNEL

REFERENCE NO. 54 A

SHEET 33 OF 34

NOTES LEU

DATE 8/8/18

ROUTE US 6

H.C. LEU

WEATHER SUNNY

COUNTY SANDUSKY

R.C. HAGEMeyer

TEMP. 70

TOWNSHIP TOWNSEND

SECTION 1

DWG BY AUBLE PID 95769

T 5 N R 17 E

TYPE MONUMENT MAG/WASHER

ON SURFACE - ~~BELOW~~ ON

OFFSET \odot PAVEMENT 1.5' ~~LT~~ : RT

10.6' TO RT EDGE PAVEMENT

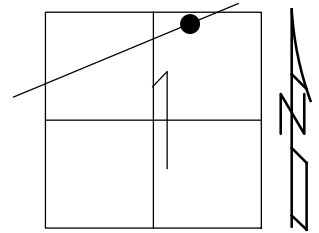
STATION: 1704+03

HORIZ. DATUM: NAD83 (2011)

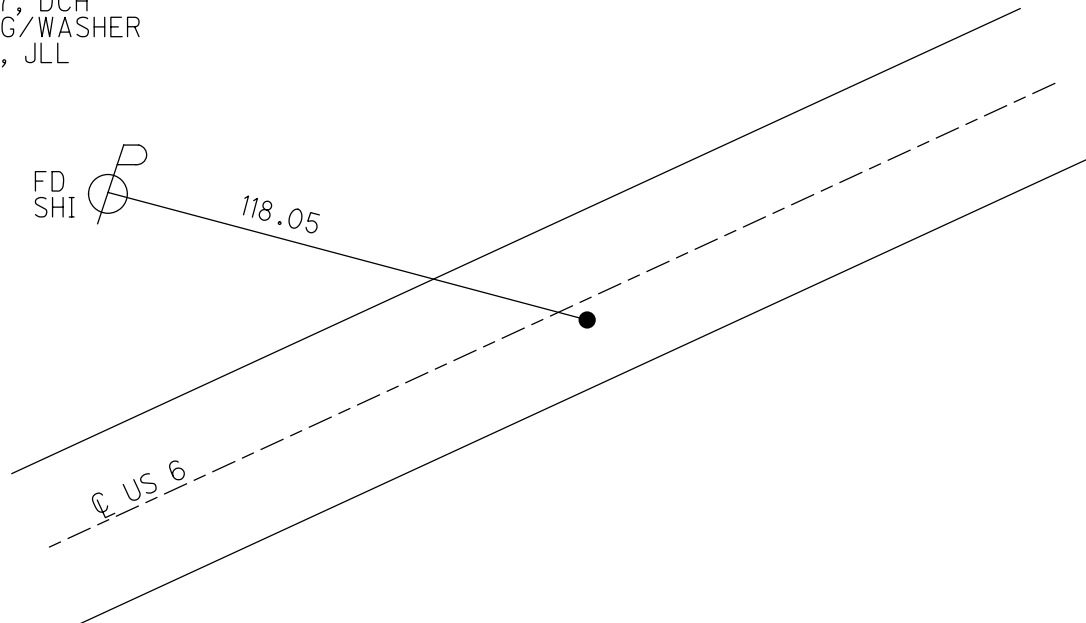
GEOID: 2012A

GRID: NORTHING: 642417.881

EASTING: 1871941.628



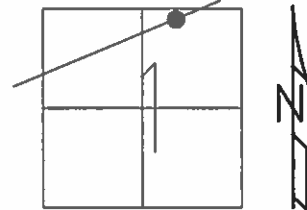
RECORD: P.I.
 STA. 159+78.84
 $\Delta = 01^\circ 55' \text{ LT}$
 PREVIOUS MONUMENTS:
 P.K./WASHER
 BOAT SPIKE
 T = 95.84'
 L = 191.00'
 FD P.K./WASHER
 3/16/02, DCH
 SET MAG/WASHER
 9/26/02 DCH
 FD MAG/WASHER
 REFA54
 11/23/17, DCH
 SET MAG/WASHER
 7-15-19, JLL



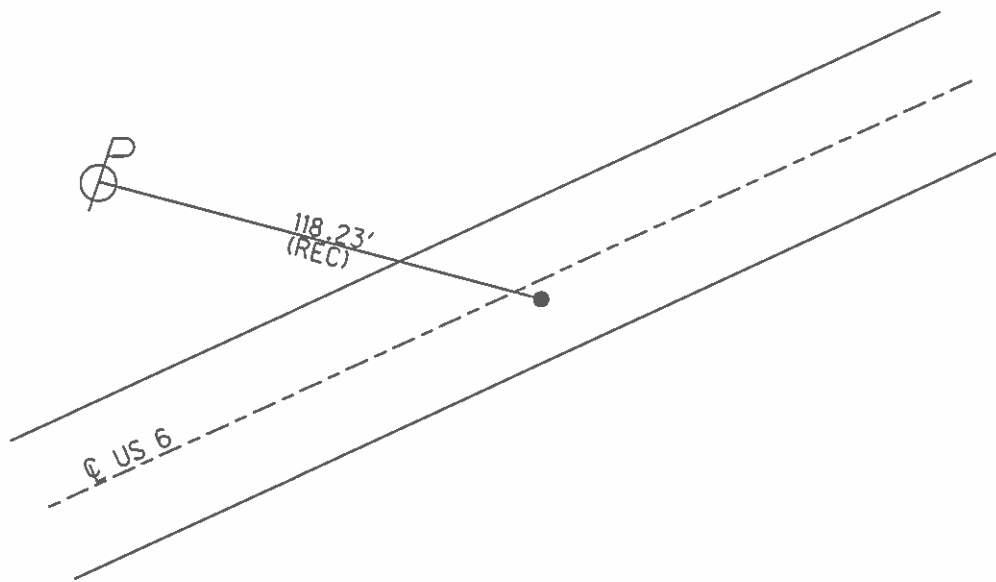
O.D.O.T. DISTRICT 2 SURVEY OFFICE (USE ONLY)

PERSONNEL _____ REFERENCE NO. 54 A SHEET 30 OF 31
 NOTES ROUSOS DATE 03/16/02 ROUTE US 6
 H.C. VAN DUSEN WEATHER WINDY COUNTY SANDUSKY
 R.C. MOSSER TEMP. 28° TOWNSHIP TOWNSEND
 _____ HOMAN _____ SECTION 1
 _____ T 5 N R 17 E

TYPE MONUMENT _____ PK/WASHER _____
 ON SURFACE - ~~BELOW~~ _____ ON _____
~~LEFT~~ - CL PAV'T - RIGHT 1.5' _____
10.6' TO RT EDGE PAVEMENT
 S.L.M. _____ 1704+03
 GRID: NORTHING: _____ EASTING: _____



RECORD: PI
 OLD STA= 159+78.84
 DELTA=01°55' LT
 PREVIOUS MONUMENTS
 PK/WASHER
 BOAT SPK
 NOTE: DATA CHANGED IN
 FIELD ON 1931 PHOTOS AT
 PLANS
 T=95.84' L=191.00'
 SET MAG/WASHER
 09/26/02 DCH



O.D.O.T. DISTRICT 2 SURVEY OFFICE

PERSONNEL _____

REFERENCE NO. _____

SHEET 38 OF 39

NOTES RIPPLE

H.C. BARBOUR

DATE 10-3-1991

ROUTE 6

R.C. GEYMAN

WEATHER _____

COUNTY SANDUSKY

TEMP. 74°

TOWNSHIP TOWNSEND

SECTION 1

T5N R17E

TYPE MONUMENT PK/WASHER

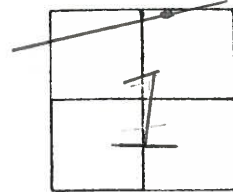
ON SURFACE - ~~BELOW~~ _____

~~LEFT~~ & PAV'T. - RIGHT 1.5'

TO _____ EDGE PAVEMENT

S.L.M. 1704+03

54A



P.I.

OLD STA. = 159+78.84

$\Delta = 01^{\circ}55' \text{ LT.}$

PREVIOUS MONUMENTS

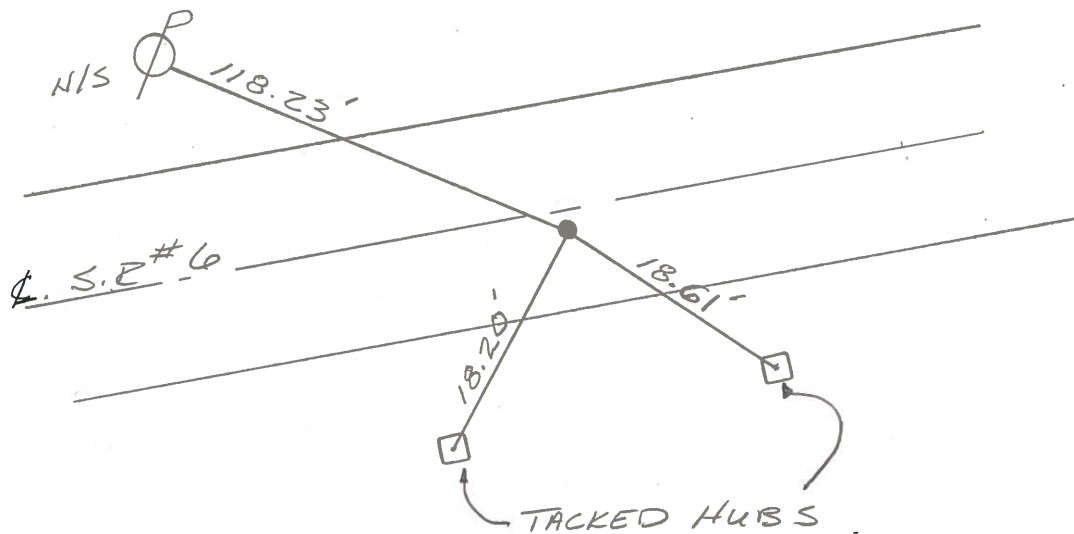
PK/WASHER

BOAT SPK.

*NOTE: DATA CHANGED IN FIELD ON 1931 PHOTOSTAT PLANS.

$T = 95.84'$

$L = 191.00'$



Q.D.O.T. DISTRICT 2 SURVEY OFFICE

SHEET _____ OF _____

County Sandusky S. R. U.S. # 6

Township Townsend

Section 1

T 5 N, R 12 E

Personnel Cronin

Ripple

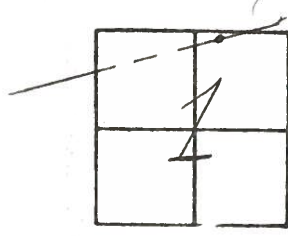
Geyman

Barbour

Date 9/26/84

Weather sunny-windy

Temp. 54°



54A

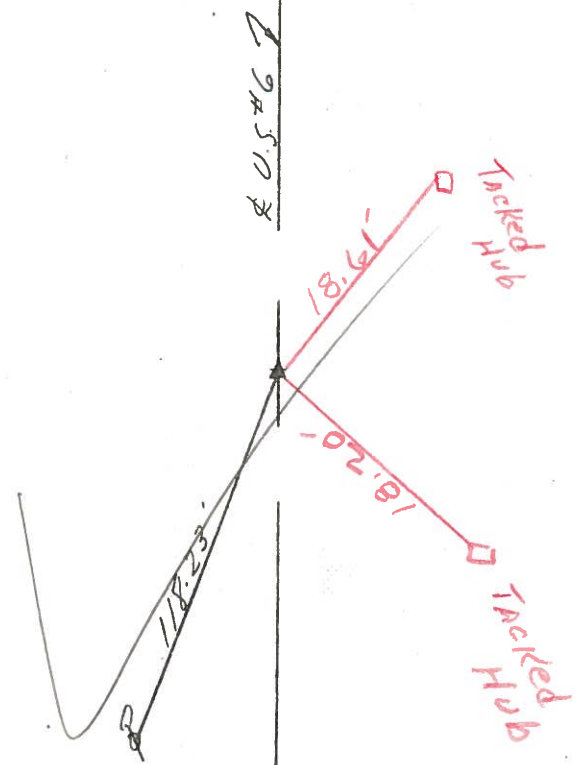
4/03/91
57°

1704+03

PI A = 01°55' Lt.
159+78.84
set P.K. & washer at top
boat spike - Data changed
in field on 1931 Photostat plans
T = 95.84'
L = 191.00

1.50' RT

10/03/91
RIPPLE
BARBOUR
GEYMAN
SET P.K. NAIL & SHINER
TEMP. 74°



Q.D.O.T. DISTRICT 2 SURVEY OFFICE

SHEET _____ OF _____

County Sandusky S. R. U.S. #6

Date 9/26/84

Township Townsend

Weather sunny-windy

Section 1

Temp. 54°

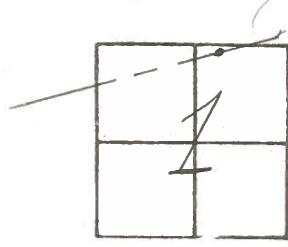
T5N, R12E

Personnel Cronin

Ripple

Geyman

Barbour



54A



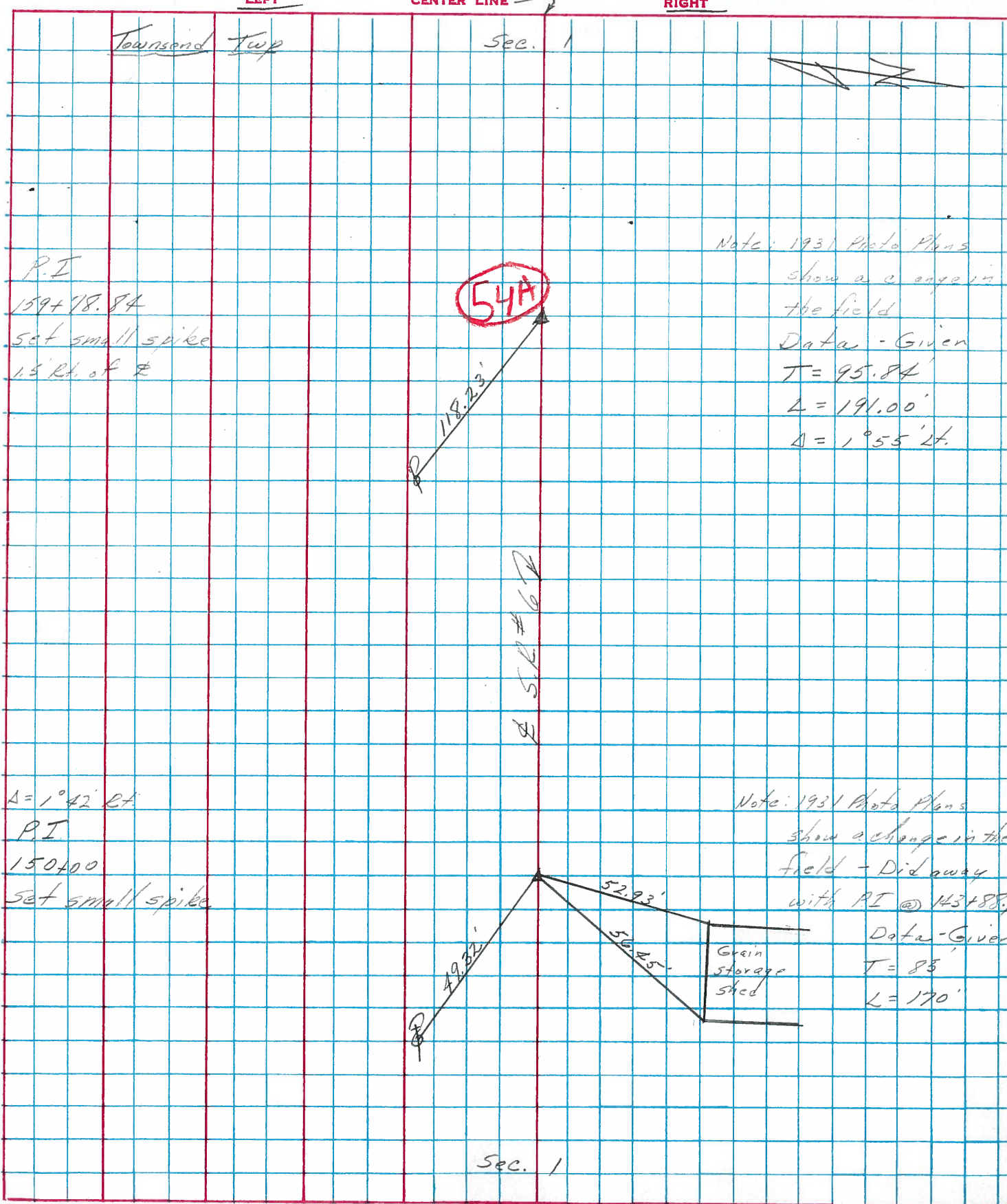
PI A = 01°55' Lt.
159+78.84
set P.K. & washer at top
boat spike - Data changed
in field on 1931 Photostat Plans
T = 95.84
L = 191.00

U.S. #6



PERSONNEL	TITLE	PERSONNEL	TITLE	COUNTY	Sandusky	DATE	8/5/75
Cronin		Schneider		S. R.	#6	WEATHER	sunny
Ash		Mosser		SEC.	H.J. - Fremont - East	TEMP.	80°
Ripple		Barbour					
Geyman							

DESCRIPTION Ties for Control Points JOB NO. _____



Note: 1931 Photo Plans
 show a change in
 the field
 Data - Given
 $T = 95.84'$
 $L = 191.00'$
 $\Delta = 1^{\circ}55' Lt.$

Note: 1931 Photo Plans
 show a change in the
 field - Did away
 with PI @ 143+88.
 Data - Given
 $T = 85'$
 $L = 170'$

P.I
 159+78.84
 set small spike
 1.5' Rt. of $\#$

$\Delta = 1^{\circ}42' Lt.$
 P.I
 150+00
 set small spike

Sec. 1