

O.D.O.T. DISTRICT 2 SURVEY OFFICE (USE ONLY)

PERSONNEL

REFERENCE NO. 55

SHEET 34 OF 34

NOTES LEU

DATE 8/9/18

ROUTE US 6

H.C. LEU

WEATHER SUNNY

COUNTY SANDUSKY

R.C. HAGEMeyer

TEMP. 70

TOWNSHIP TOWNSEND

DWG BY AUBLE

PID 95769

SECTION 1

T 5 N R 17 E

TYPE MONUMENT BOAT SPIKE/WASHER

~~ON SURFACE~~ - BELOW 4"

OFFSET Q PAVEMENT ON LT : RT

12.0' TO LT EDGE PAVEMENT

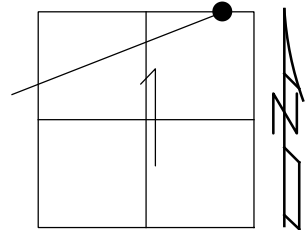
STATION: 1714+36

HORZ. DATUM: NAD83 (2011)

GEOID: 2012A

GRID: NORTHING: 642804.881

EASTING: 1872897.843



RECORD:

STA. 170+14.50

PREVIOUS MONUMENTS:

P.K./WASHER

BOAT SPIKE/WASHER

FD P.K./WASHER

3/16/02, DCH

SET MAG/WASHER

9/26/02, DCH

FD BOAT SPIKE/WASHER

4" DOWN

REF55

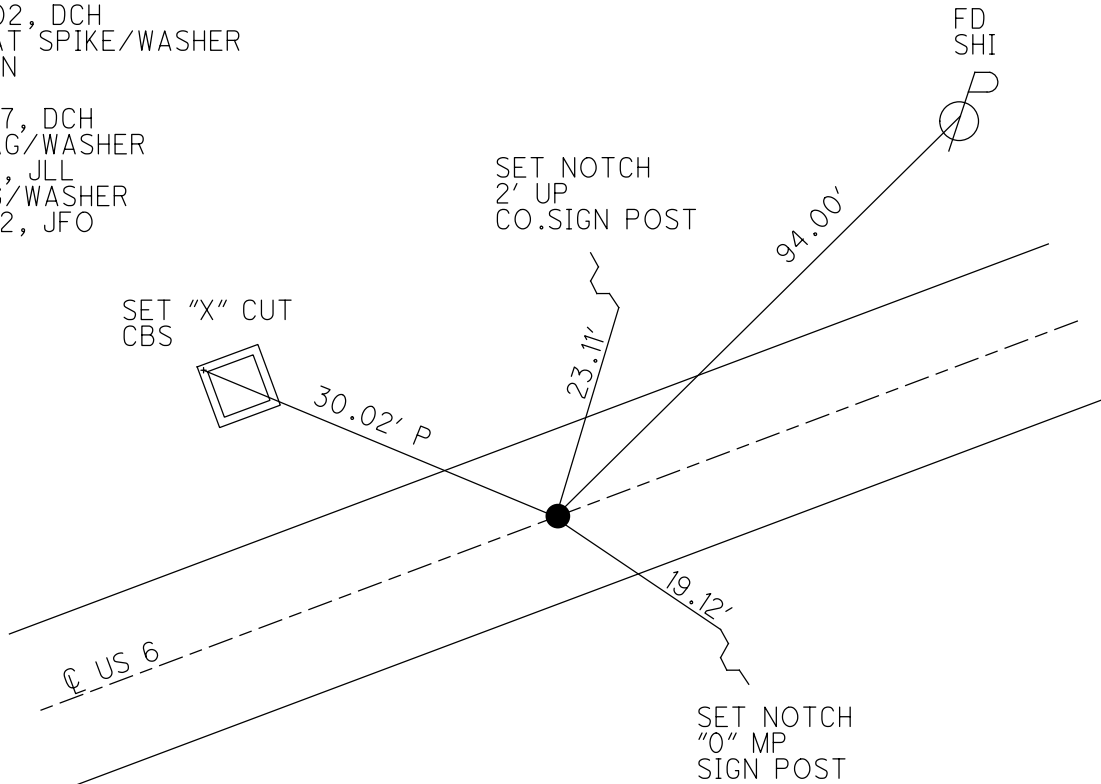
11/23/17, DCH

SET MAG/WASHER

7-15-19, JLL

FD MAG/WASHER

2/10/22, JFO



O.D.O.T. DISTRICT 2 SURVEY OFFICE (USE ONLY)

PERSONNEL \_\_\_\_\_ REFERENCE NO. 55 SHEET 34 OF 34  
 NOTES LEU DATE 8/9/18 ROUTE US 6  
 H.C. LEU WEATHER SUNNY COUNTY SANDUSKY  
 R.C. HAGEMeyer TEMP. 70 TOWNSHIP TOWNSEND  
 DWG BY AUBLE PID 95769 SECTION 1  
 T 5 N R 17 E

TYPE MONUMENT BOAT SPIKE/WASHER

~~ON SURFACE~~ - BELOW 4"

OFFSET Q PAVEMENT ON LT : RT

12.0' TO LT EDGE PAVEMENT

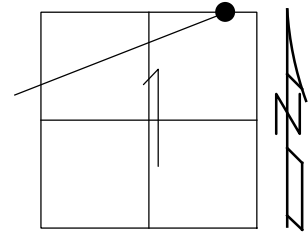
STATION: 1714+36

HORZ.DATUM: NAD83 (2011)

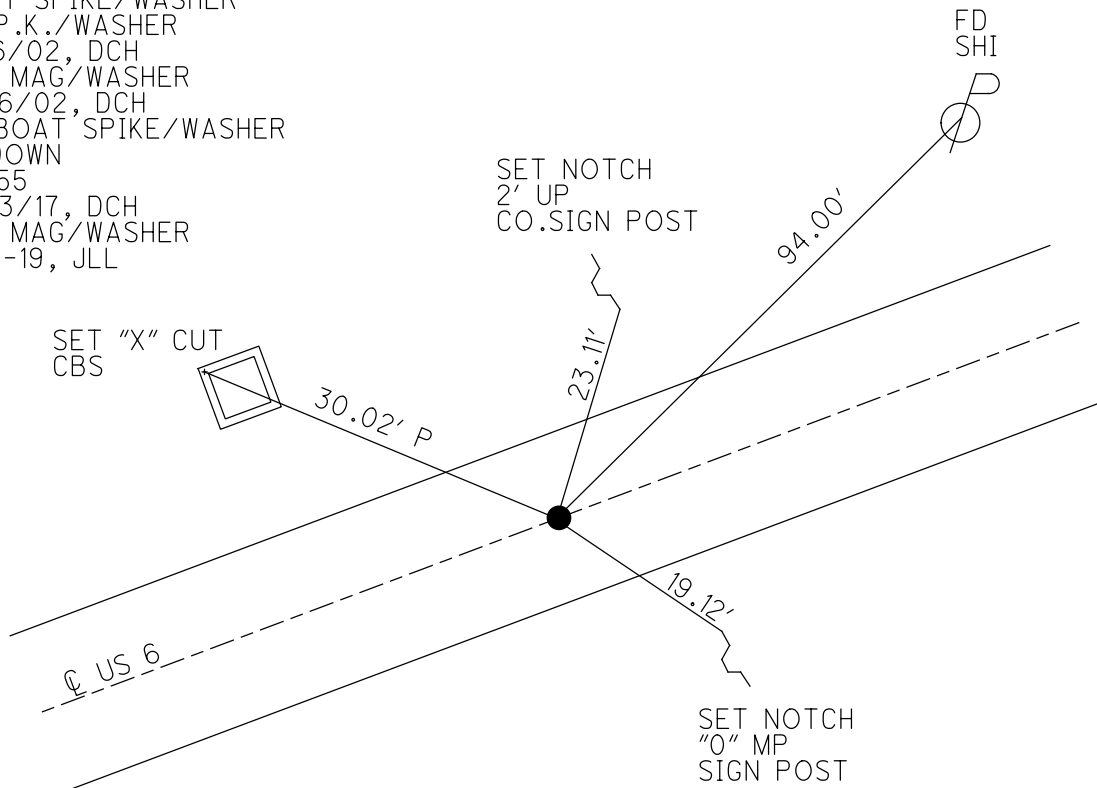
GEOID: 2012A

GRID: NORTHING: 642804.881

EASTING: 1872897.843



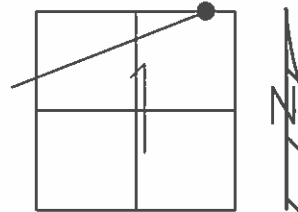
RECORD:  
 STA. 170+14.50  
 PREVIOUS MONUMENTS:  
 P.K./WASHER  
 BOAT SPIKE/WASHER  
 FD P.K./WASHER  
 3/16/02, DCH  
 SET MAG/WASHER  
 9/26/02, DCH  
 FD BOAT SPIKE/WASHER  
 4" DOWN  
 REF55  
 11/23/17, DCH  
 SET MAG/WASHER  
 7-15-19, JLL



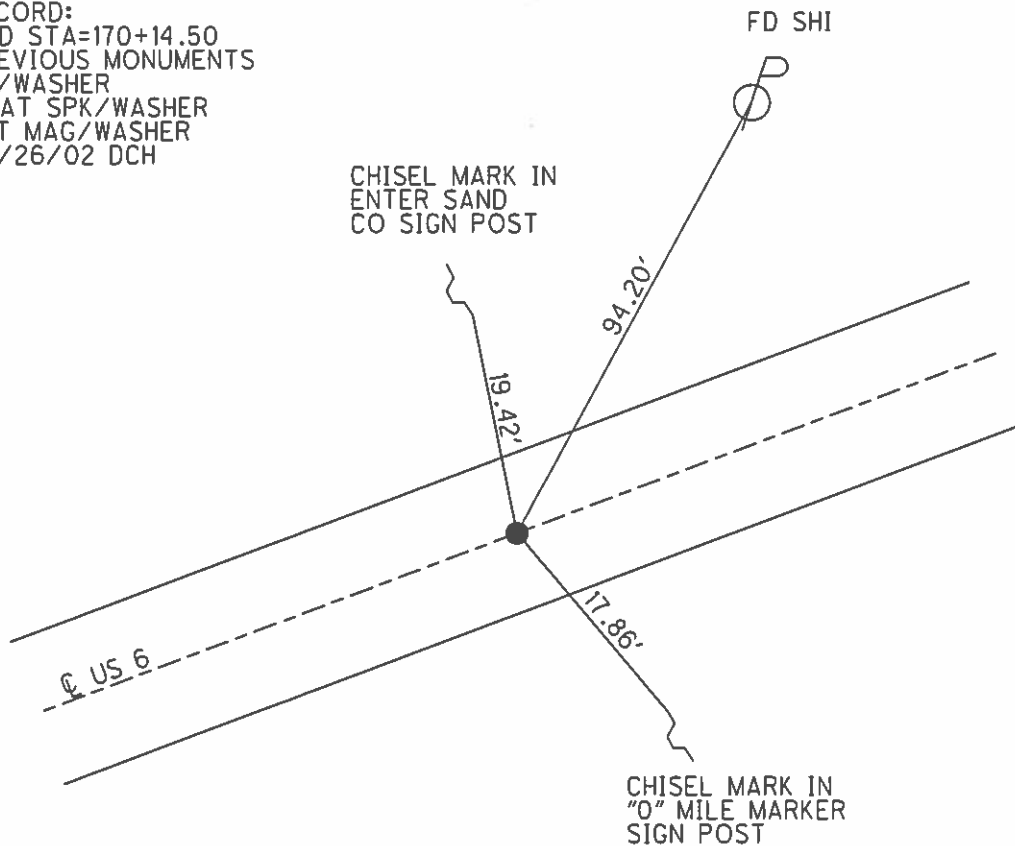
**O.D.O.T. DISTRICT 2 SURVEY OFFICE (USE ONLY)**

PERSONNEL	REFERENCE NO.	<u>55</u>	SHEET	<u>31</u>	OF	<u>31</u>
NOTES	<u>ROUSOS</u>	DATE	<u>03/16/02</u>	ROUTE	<u>US 6</u>	
H.C.	<u>VAN DUSEN</u>	WEATHER	<u>WINDY</u>	COUNTY	<u>SANDUSKY</u>	
R.C.	<u>MOSSER</u>	TEMP.	<u>28°</u>	TOWNSHIP	<u>TOWNSEND</u>	
	<u>HOMAN</u>			SECTION	<u>1</u>	
				T. <u>5</u> N	R. <u>17</u> E	

TYPE MONUMENT PK/WASHER  
 ON SURFACE - ~~BELOW~~ ON  
~~LEFT~~ - Q PAV'T - ~~RIGHT~~ ON  
12.0' TO LT. EDGE PAVEMENT  
 S.L.M. 1714+36  
 GRID: NORTHING: - EASTING: -



RECORD:  
 OLD STA=170+14.50  
 PREVIOUS MONUMENTS  
 PK/WASHER  
 BOAT SPK/WASHER  
 SET MAG/WASHER  
 09/26/02 DCH



O.D.O.T. DISTRICT 2 SURVEY OFFICE

PERSONNEL

REFERENCE NO. 55

SHEET 39 OF 39

NOTES RIPPLE

H.C. BARBOUR

DATE 10-3-1991

ROUTE 6

R.C. GEYMAN

WEATHER \_\_\_\_\_

COUNTY SANDUSKY

TEMP. 74°

TOWNSHIP TOWNSEND

SECTION 1

T5N R17 E

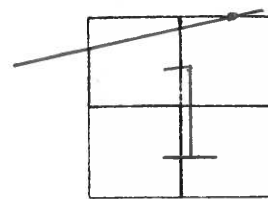
TYPE MONUMENT PK/WASHER

ON SURFACE - ~~BELOW~~ \_\_\_\_\_

LEFT- & PAV'T. - RIGHT \_\_\_\_\_

TO \_\_\_\_\_ EDGE PAVEMENT

S.L.M. 1714+36



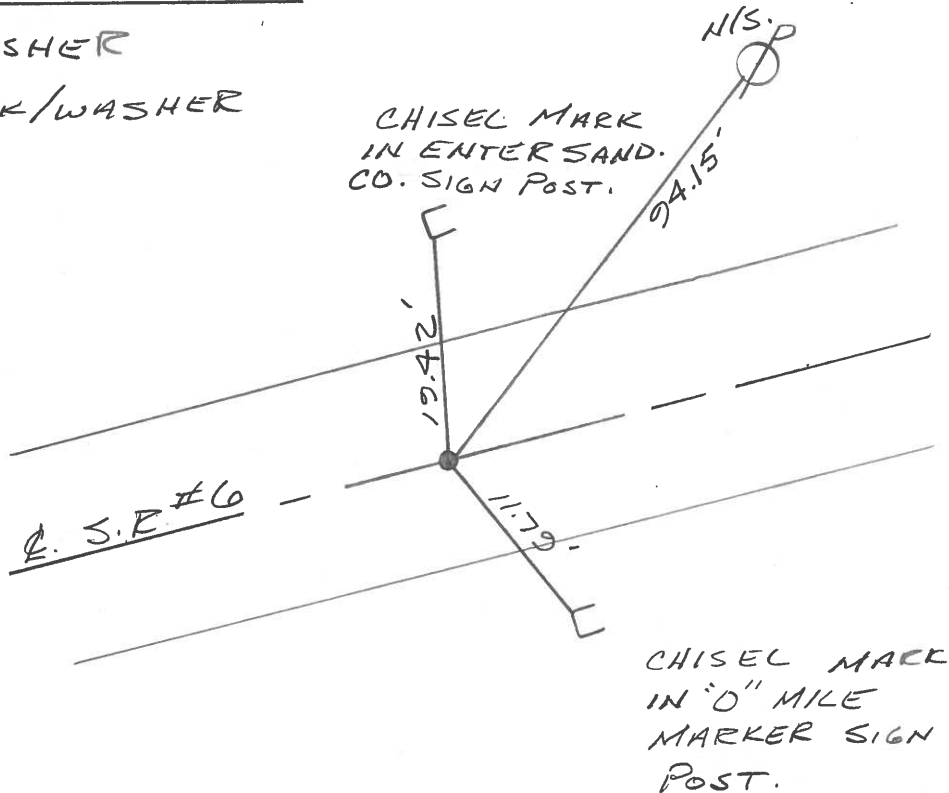
P.I. (?)

OLD STA. = 170+14.50

PREVIOUS MONUMENTS

PK/WASHER

BOAT SPK/WASHER



Q.D.O.T. DISTRICT 2 SURVEY OFFICE

SHEET \_\_\_\_\_ OF \_\_\_\_\_

County Sandusky S. R. U.S. #6

Township Townsend

Section 1

T<sup>5</sup>N, R<sup>12</sup>E

Personnel Cronin

Ripple

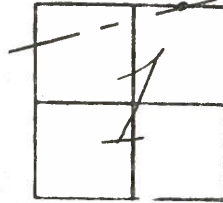
Geyman

Barbour

Date 9/26/87

Weather sunny-windy

Temp. 52°



(55)

4/03/91  
57°

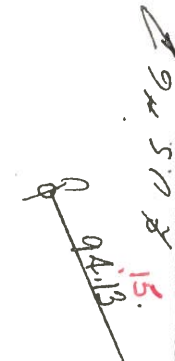
1714 + 36

P.I. ??

170 + 14.50

set P.K. & washer at top  
boat spike & washer

~~175~~



chisel mark in  
Enter Sandusky  
Co. sign post

chisel mark in o.H.  
sign post

10/03/91

RIPPLE

BARBOUR

GEYMAN

SET P.K. NAIL & WASHER

Temp. 74°



Q.D.O.T. DISTRICT 2 SURVEY OFFICE

SHEET \_\_\_\_\_ OF \_\_\_\_\_

County Sandusky S. R. U.S. #6

Date 9/26/87

Township Townsend

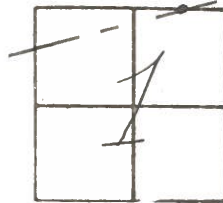
Weather sunny-windy

Section 1

Temp. 52°

T<sup>5</sup>N, R<sup>12</sup>E

Personnel Cronin



#  
55

Ripple

Geyman

Barbour

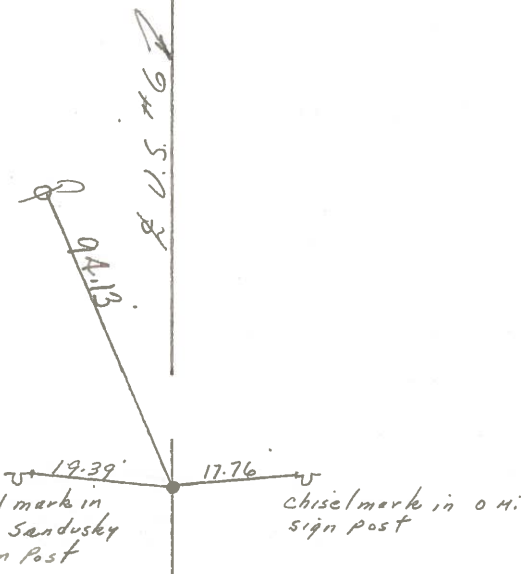


P.I. ??

170 + 14.50

set P.K. & washer atop

boot spike & washer



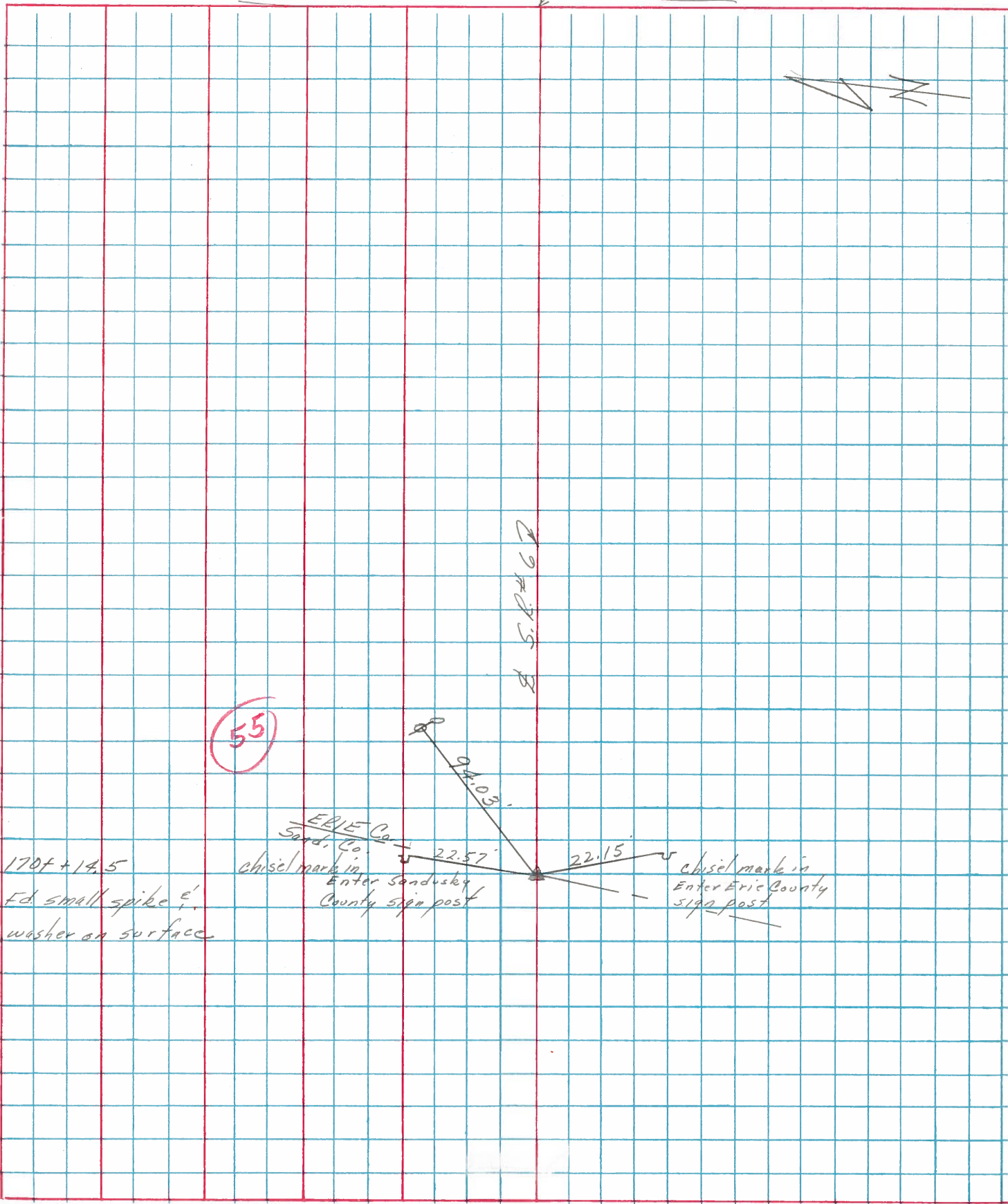
chisel mark in  
Enter Sandusky  
Co. sign Post

chisel mark in o.h.  
sign post

PERSONNEL	TITLE	PERSONNEL	TITLE
Cronin		Schneider	
Ash		Masser	
Ripple		Barbour	
Geyman			

COUNTY Sandusky DATE 8/5/75  
 S. R. #6 WEATHER sunny  
 SEC. H-1 - Fremont - East TEMP. 80°

DESCRIPTION Ties for Control Points LEFT CENTER LINE RIGHT JOB NO.



PERSONNEL	TITLE	PERSONNEL	TITLE	COUNTY	DATE
<u>Schneider</u>		<u>Potts</u>		<u>Sandusky</u>	<u>Dec-1966</u>
<u>Mosser</u>				S. R. <u>U.S.# 6</u>	WEATHER
<u>Barbour</u>				SEC. <u>Fremont-East</u>	TEMP.
<u>Redding</u>					

DESCRIPTION Ties for Control Points JOB NO. \_\_\_\_\_

