

SENECA and SANDUSKY COUNTY OHIO

Total Number of Owners 8

FED. RD. DIVISION	STATE	PROJECT
2	OHIO	

SEN-12-12.92  
SAN-12-(0.00)(1.02)

44  
49  
1  
6

SUMMARY OF RIGHT-OF-WAY REQUIRED

Parcel No.	Sheet No.	Owner	Deed Book	Record Page	Deed Area	To Be Required Land Acres	Residue Acres Left	Bldgs. Right	Remarks
~ Seneca County ~									
11	45	Nevin M. Fry	239	418	145.79	0.282			P.R.O. = 0.859 Ac.
11-WA	"	" " "			"				
12	"	" " "			"	0.725			P.R.O. = 1.137 Ac.
12-WA	"	" " "			"				
~ Sandusky County ~									
13	45	Gilbert B. Overmyer, Et Al.	220 253	955 260	151.46	0.116			P.R.O. = 0.321 Ac.
13-WA	"	" " "			"				
13-A	46	" " "			"	0.322			P.R.O. = 0.657 Ac.
13-T	45	" " "			"	0.027 390.377			
14	45&46	Dean Kissberth, Et Al.	243	330	103.29	0.959			P.R.O. = 1.898 Ac.
15	46	" " "			"	0.133			P.R.O. = 0.292 Ac.
15-WA-1	"	" " "			"				
15-WA-2	"	" " "			"				
15-WA-3	"	" " "			"				
15-A	"	" " "			"	0.826			P.R.O. = 1.455 Ac.
16	46&47	Cletus W. Trumbo	237	324	109.79	0.659			P.R.O. = 1.113 Ac.
16-X	46	" " "			"				Cont. = 0.037 Ac.
17	46&47	Luther & Evelyn Linder	193	13	39.75	0.120			P.R.O. = 0.223 Ac.
18	46	" " "			"	0.101			P.R.O. = 0.279 Ac.
19	47&48	Alice Enfield, Et Al.	196	318	120.67	0.630			P.R.O. = 1.804 Ac.
20	"	" " "			"	0.545			P.R.O. = 1.770 Ac.
21	48	James W. Davidson	156	91	120	0.581			P.R.O. = 0.584 Ac.
21-S	"	" " "			"				Cont. = 0.031 Ac.
21-WA-1	"	" " "			"				
21-WA-2	"	" " "			"				
21-A	"	" " "			"	0.136			P.R.O. = 0.547 Ac.
21A-WA-1	"	" " "			"				
21A-WA-2	"	" " "			"				
21A-WA-3	"	" " "			"				
22	"	" " "			"	0.173			P.R.O. = 0.506 Ac.
22-WA	"	" " "			"				
22-A	"	" " "			"	0.489			P.R.O. = 0.510 Ac.
22-A-X	"	" " "			"				Cont. = 0.013 Ac.
23	48&49	Ronald K. & Donna J. Willoughby	254 215	543 456	80	0.468			P.R.O. = 0.656 Ac.
24	48	" " "			"				
24-WA	49	" " "			"				
24-A	"	" " "			"	0.028			P.R.O. = 0.260 Ac.

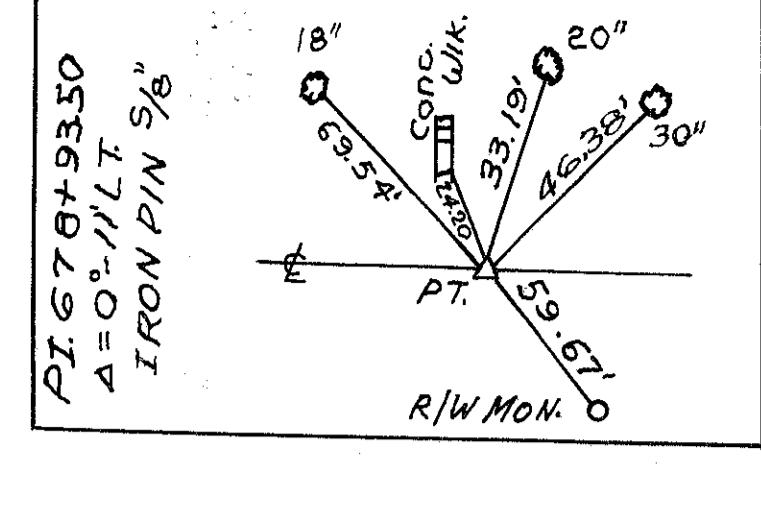
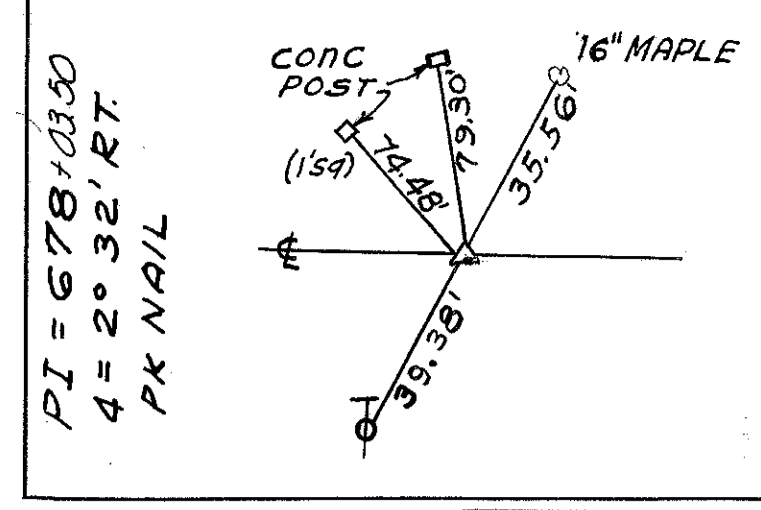
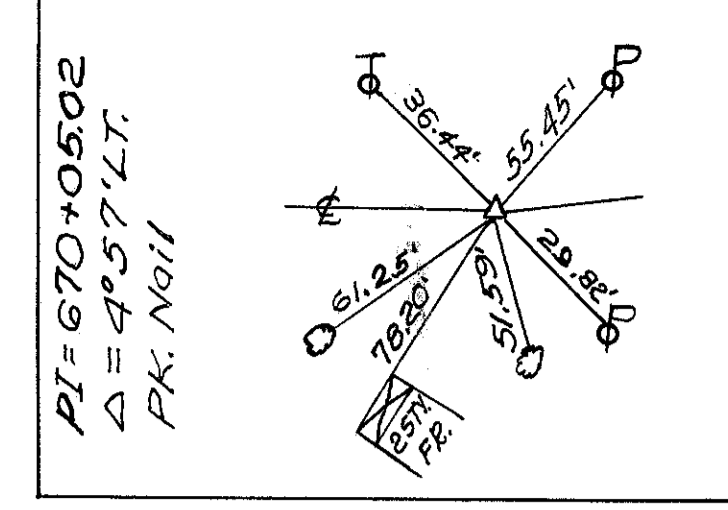
Sandusky County 1997

R5012 #1 664

252  
859  
1101

Drawn July 1997

SEC. 3 LIBERTY TWP T3N R14E

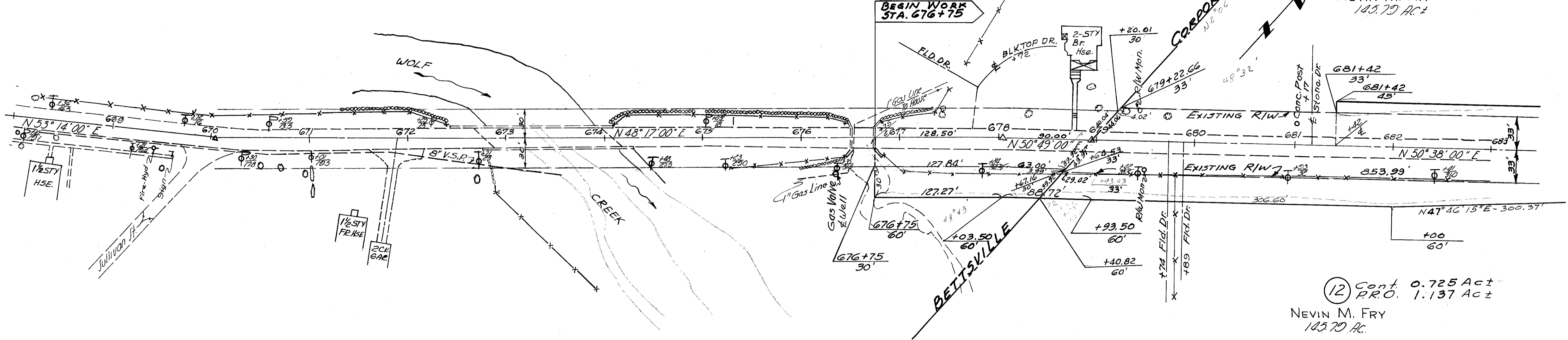


FED. RD. DIVISION	STATE	PROJECT	
2	OHIO		

SEN-12-12.92  
SAN-12-(10.00)(1.02)

11 Cont. 0.282 Ac ±  
P.R.O. 0.859 Ac ±  
NEVIN M. FRY  
145.79 Ac ±

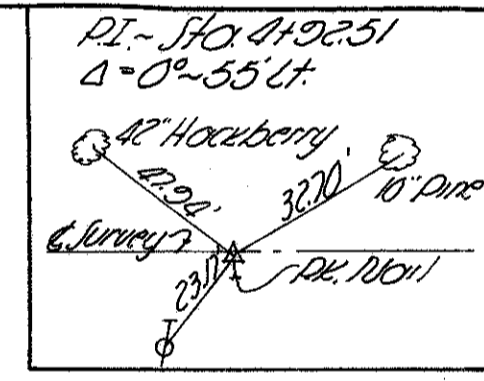
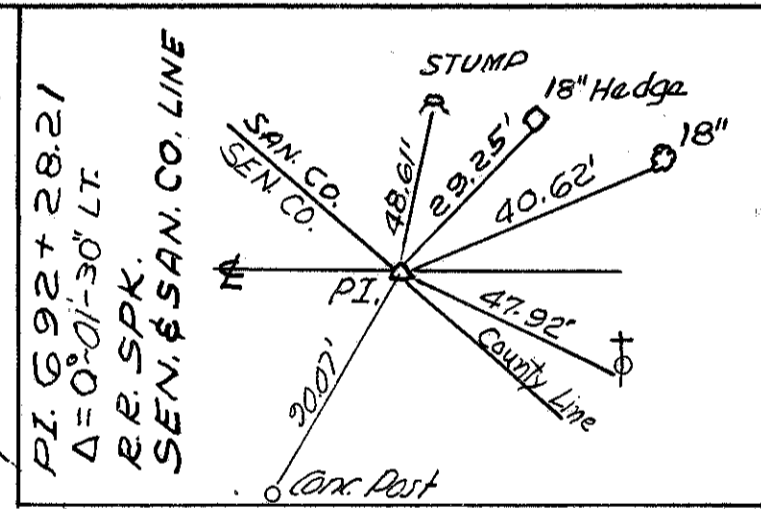
12 Cont. 0.725 Ac ±  
P.R.O. 1.137 Ac ±  
NEVIN M. FRY  
145.79 Ac ±



SEC. 3 LIBERTY TWP T3N R14E

SEC. 3 LIBERTY TWP T3N R14E

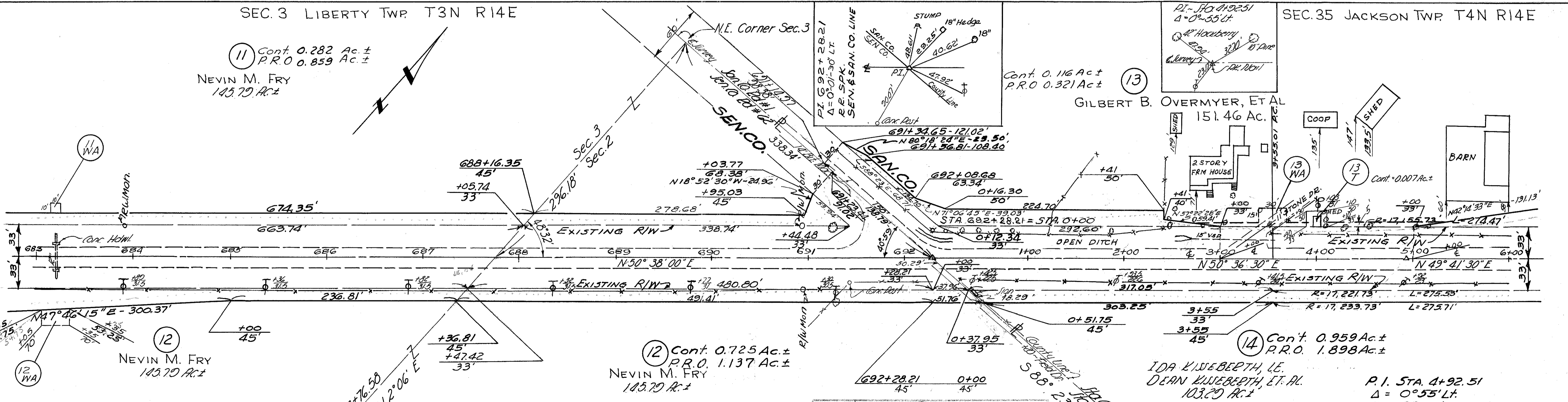
11 Cont. 0.282 Ac ±  
P.R.O. 0.859 Ac ±  
NEVIN M. FRY  
145.79 Ac ±



SEC. 35 JACKSON TWP T4N R14E

Cont. 0.116 Ac ±  
P.R.O. 0.321 Ac ±

13 GILBERT B. OVERMYER, ET AL  
151.46 Ac ±



12 Cont. 0.725 Ac ±  
P.R.O. 1.137 Ac ±  
NEVIN M. FRY  
145.79 Ac ±

14 Cont. 0.959 Ac ±  
P.R.O. 1.898 Ac ±  
IDA WISEBERTH, LE.  
DEAN WISEBERTH, ET AL  
103.20 Ac ±

P.I. STA. 4+92.51  
Δ = 0°55'LT  
D = 0°20'  
R = 17,188.73'  
T = 137.50'  
L = 275.00'  
E = 0.52'

DATE	REMARKS
3-18-65	Parcel 13-T Added
4-18-66	Parcels 11 & 12 Revised

SEC. 3 LIBERTY TWP T3N R14E E 1/4 Past Sec. 3

SEC. 2 LIBERTY TWP T3N R14E

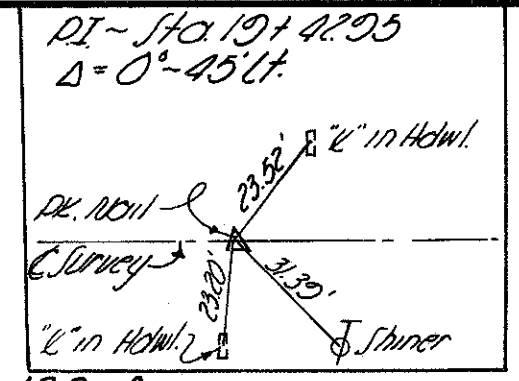
SEC. 35 JACKSON Twp T4N, R14E

R/W 2

Sec. 35 Jackson Twp, T4N, R14E

FED. RD. DIVISION	STATE	PROJECT
2	OHIO	

46  
49  
3  
6



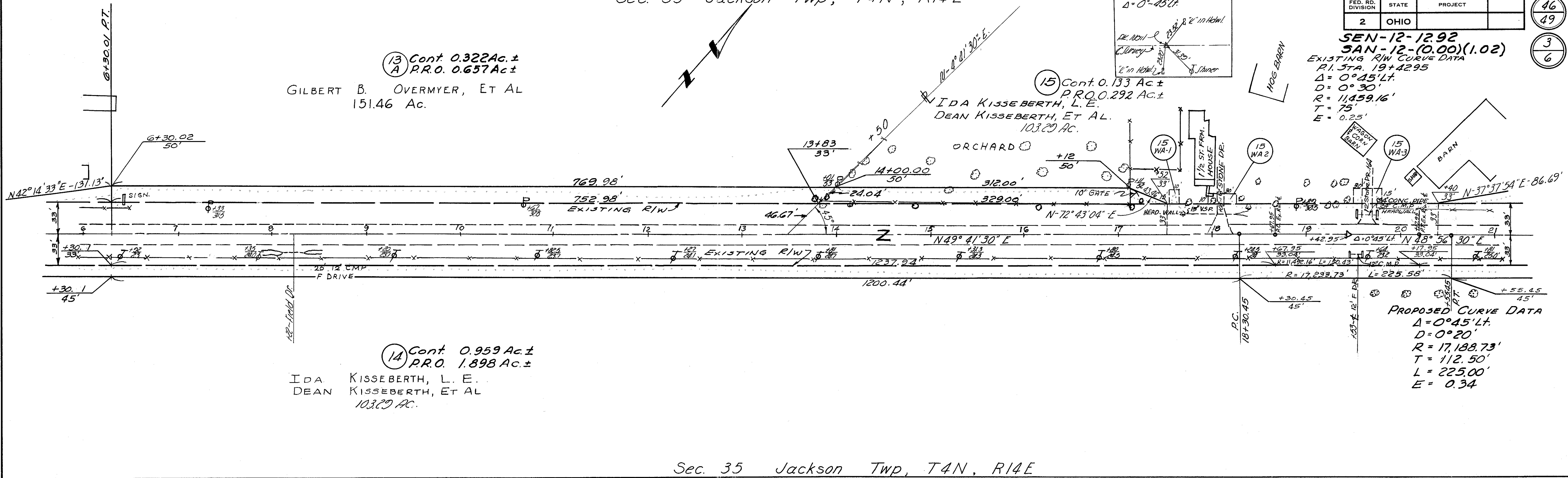
SEN-12-12.92  
SAN-12-(0.00)(1.02)  
EXISTING R/W CURVE DATA  
P.I. STA. 19+42.95  
Δ = 0°45'Lt.  
D = 0°30'  
R = 11,459.16'  
T = 75'  
E = 0.25'

(13) Cont. 0.322 Ac. ±  
A P.R.O. 0.657 Ac ±  
GILBERT B. OVERMYER, ET AL  
151.46 Ac.

(15) Cont. 0.133 Ac ±  
P.R.O. 0.292 Ac ±  
IDA KISSEBERTH, L.E.  
DEAN KISSEBERTH, ET AL.  
103.29 AC.

(14) Cont. 0.959 Ac ±  
P.R.O. 1.898 Ac ±  
IDA KISSEBERTH, L.E.  
DEAN KISSEBERTH, ET AL  
103.29 AC.

PROPOSED CURVE DATA  
Δ = 0°45'Lt.  
D = 0°20'  
R = 17,188.73'  
T = 112.50'  
L = 225.00'  
E = 0.34

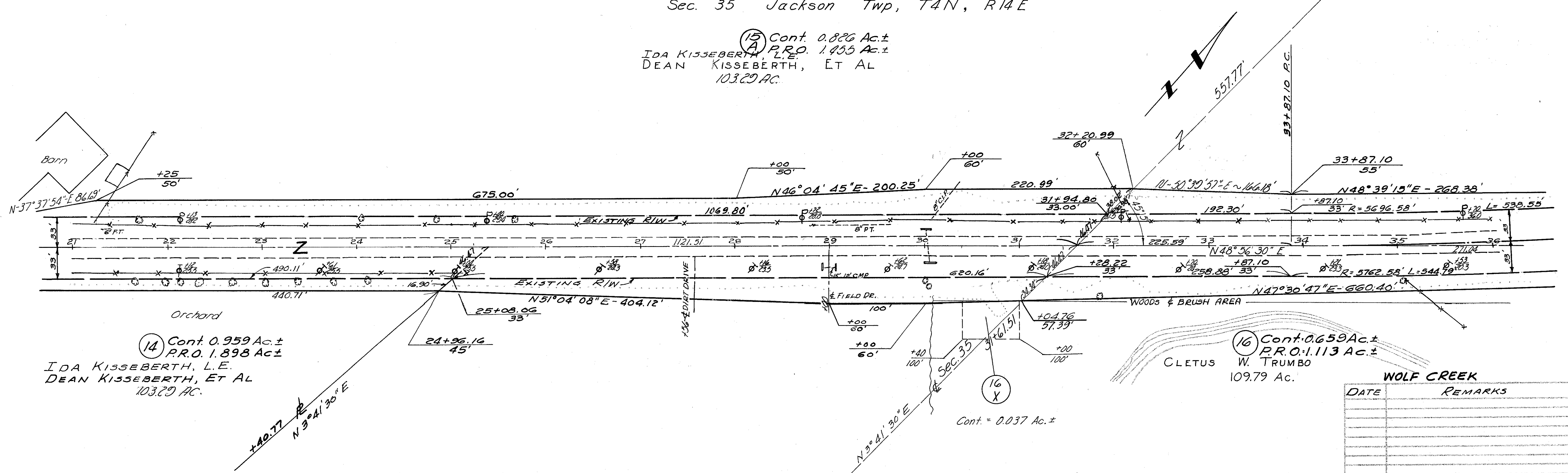


Sec. 35 Jackson Twp, T4N, R14E  
Sec. 35 Jackson Twp, T4N, R14E

(15) Cont. 0.826 Ac ±  
A P.R.O. 1.455 Ac ±  
IDA KISSEBERTH, L.E.  
DEAN KISSEBERTH, ET AL  
103.29 AC.

(14) Cont. 0.959 Ac ±  
P.R.O. 1.898 Ac ±  
IDA KISSEBERTH, L.E.  
DEAN KISSEBERTH, ET AL  
103.29 AC.

(16) Cont. 0.659 Ac ±  
P.R.O. 1.113 Ac ±  
CLETUS W. TRUMBO  
109.79 Ac.



Sec. 35, Jackson Twp, T4N, R14E

WOLF CREEK	
DATE	REMARKS

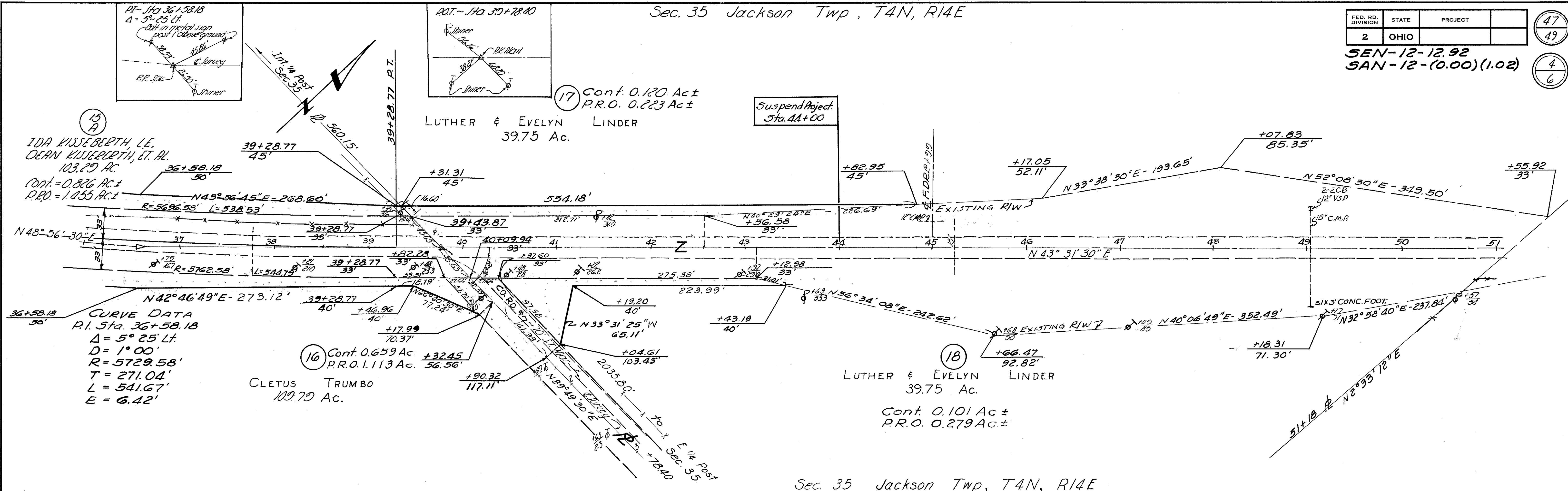
Scanned July 10 2017

FED. RD. DIVISION	STATE	PROJECT	47
2	OHIO		49

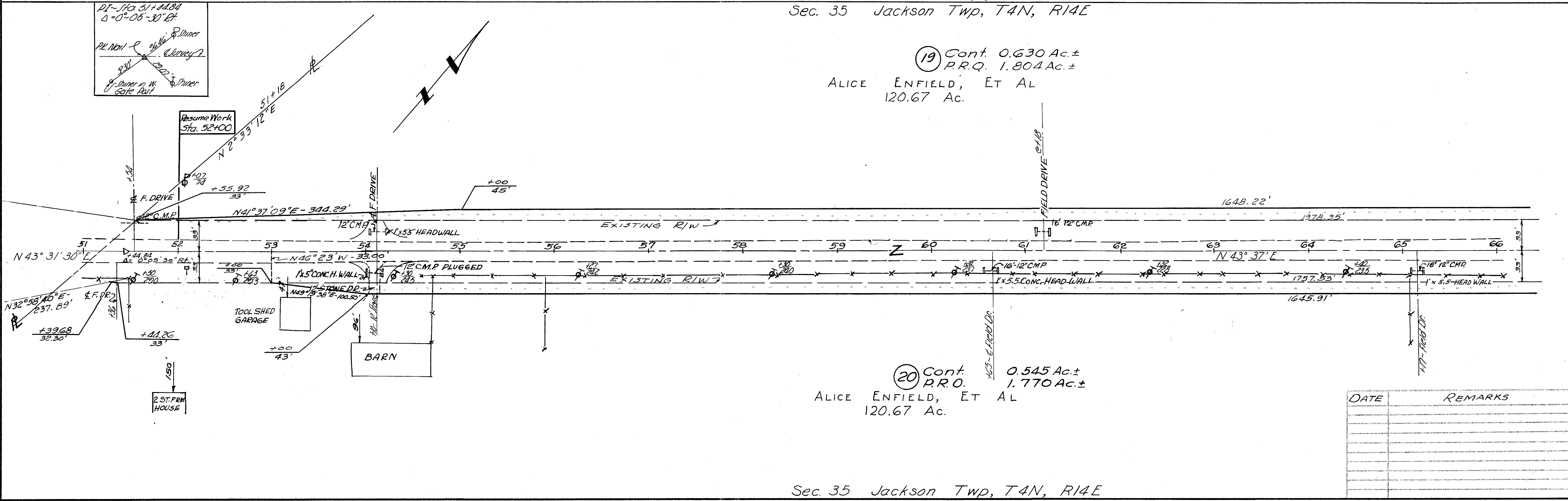
SEN-12-12.92  
SAN-12-(0.00)(1.02)

4
6

Sec. 35 Jackson Twp, T4N, R14E



Sec. 35 Jackson Twp, T4N, R14E  
Sec. 35 Jackson Twp, T4N, R14E



(19) Cont. 0.630 Ac.±  
P.R.Q. 1.804 Ac.±  
ALICE ENFIELD, ET AL  
120.67 Ac.

(20) Cont. 0.545 Ac.±  
P.R.O. 1.770 Ac.±  
ALICE ENFIELD, ET AL  
120.67 Ac.

Sec. 35 Jackson Twp, T4N, R14E

DATE	REMARKS

R/W 4

Scanned  
July 9 1997

Sec. 35 Jackson Twp, T4N R14E

NW Cor. Sec. 36 SW Cor. Sec. 25

Sec. 25 Jackson Twp, T4N, R14E

FED. RD. DIVISION	STATE	PROJECT
2	OHIO	

48  
49

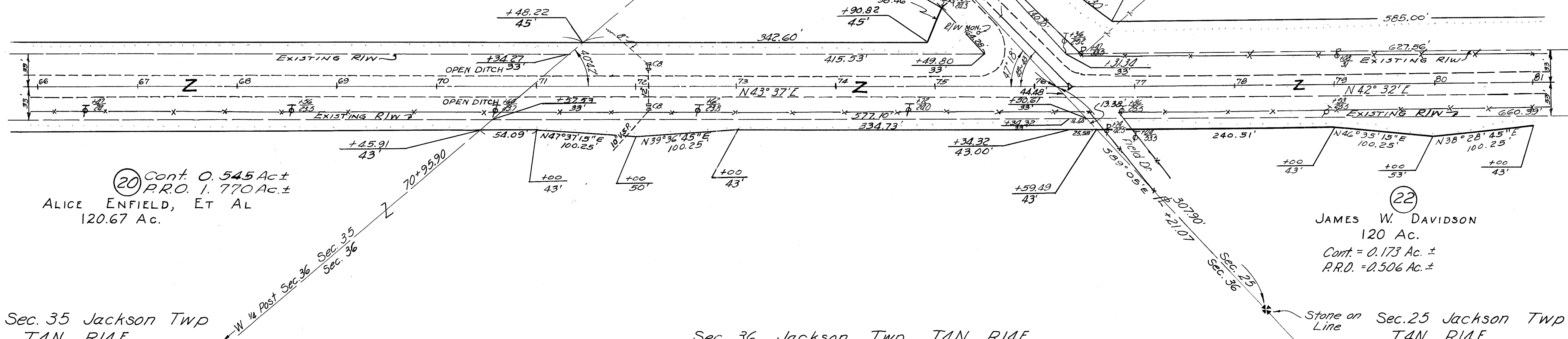
SEN-12-12.92  
SAN-12-(0.00)(1.02)

5  
6

(19) Cont. 0.630 Ac. ±  
P.R.O. 1.804 Ac. ±  
ALICE ENFIELD, ET AL  
120.67 Ac.

(21) JAMES W. DAVIDSON  
120 Ac.  
Cont. = 0.581 Ac. ±  
P.R.O. = 0.584 Ac. ±

(22) JAMES W. DAVIDSON  
120 Ac.  
Cont. = 0.173 Ac. ±  
P.R.O. = 0.506 Ac. ±



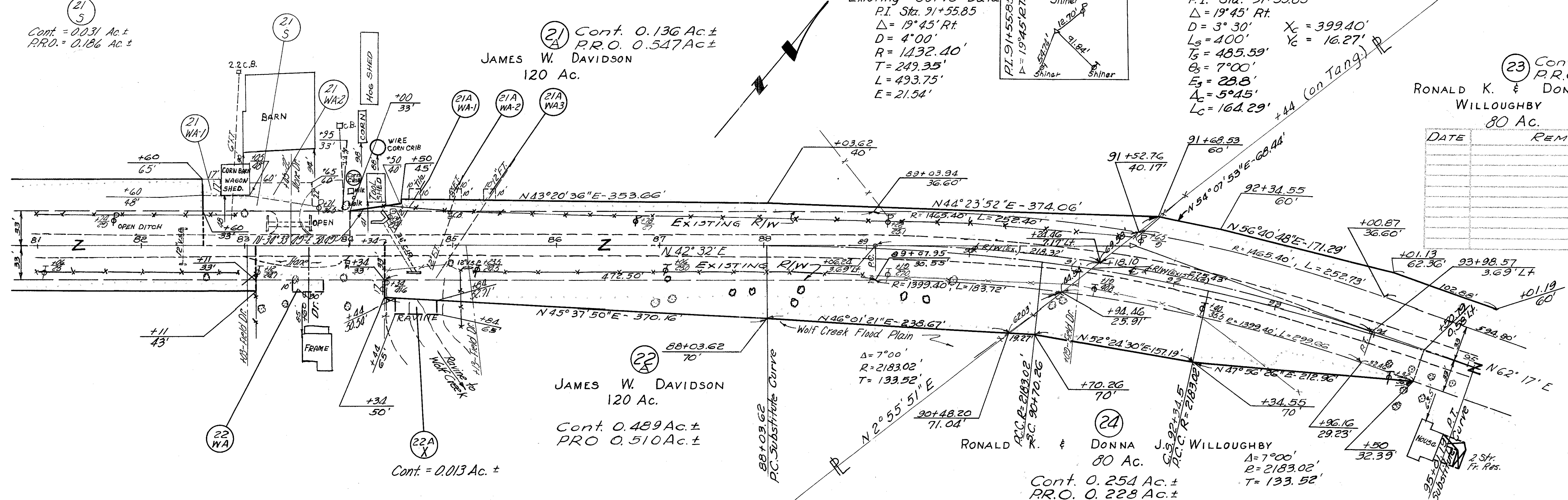
Sec. 35 Jackson Twp T4N R14E

Sec. 36 Jackson Twp, T4N, R14E  
Sec. 25 Jackson Twp, T4N, R14E

Sec. 25 Jackson Twp T4N, R14E

(21) Cont. = 0.031 Ac. ±  
P.R.O. = 0.186 Ac. ±

(21) JAMES W. DAVIDSON  
120 Ac.  
Cont. 0.136 Ac. ±  
P.R.O. 0.547 Ac. ±



(22) JAMES W. DAVIDSON  
120 Ac.  
Cont. 0.489 Ac. ±  
P.R.O. 0.510 Ac. ±

Cont. = 0.013 Ac. ±

Sec. 25 Jackson Twp, T4N, R14E

Existing Curve Data  
P.I. Sta. 91+55.85  
Δ = 19°45' Rt.  
D = 4'00"  
R = 1432.40'  
T = 249.35'  
L = 493.75'  
E = 21.54'

Proposed Curve Data  
P.I. Sta. 91+55.85  
Δ = 19°45' Rt.  
D = 3'30" Xc = 399.40'  
Ls = 400' Yc = 16.27'  
Ts = 485.59'  
Cs = 7°00'  
Es = 28.8'  
Δc = 5°45'  
Lc = 164.29'

(23) Cont. 0.468 Ac. ±  
P.R.O. 0.656 Ac. ±  
RONALD K. & DONNA J. WILLOUGHBY  
80 Ac.

DATE	REMARKS

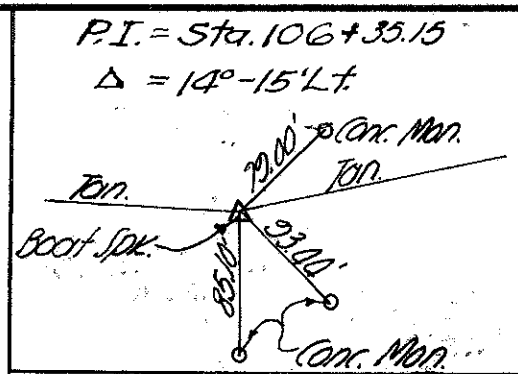
(24) RONALD & DONNA J. WILLOUGHBY  
80 Ac.  
Cont. 0.254 Ac. ±  
P.R.O. 0.228 Ac. ±  
Δ = 7°00'  
R = 2183.02'  
T = 133.52'

Scanned July 1997

Sec. 25 Jackson Twp, T4N, R14E

23 Cont. 0.468 Ac. ±  
P.R.O. 0.656 Ac. ±  
RONALD K. & DONNA J. WILLOUGHBY  
80 Ac.

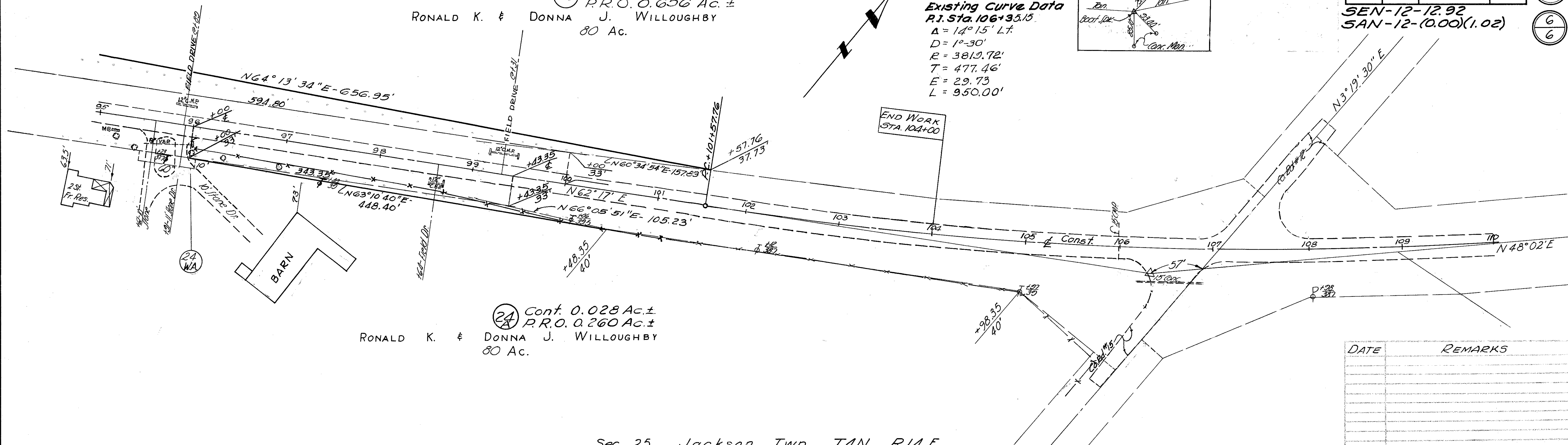
Existing Curve Data  
P.I. Sta. 106+35.15  
Δ = 14° 15' Lt.  
D = 1° 30'  
R = 3819.72'  
T = 477.46'  
E = 29.73'  
L = 950.00'



FED. RD. DIVISION	STATE	PROJECT
2	OHIO	

SEN-12-12.92  
SAN-12-(0.00)(1.02)

49  
49  
6  
6



24 Cont. 0.028 Ac. ±  
P.R.O. 0.260 Ac. ±  
RONALD K. & DONNA J. WILLOUGHBY  
80 Ac.

Sec. 25 Jackson Twp, T4N, R14E

DATE	REMARKS