

O.D.O.T. DISTRICT 2 SURVEY OFFICE (USE ONLY)

PERSONNEL _____ REFERENCE NO. 1 A SHEET 1 OF 24

NOTES WESTFALL DATE 05-06-15 ROUTE SR 12
 H.C. O'DONNELL WEATHER SUNNY COUNTY SANDUSKY
 R.C. LEU TEMP. 65°F TOWNSHIP JACKSON
 SECTION 35
 T 4 N R 14 E

TYPE MONUMENT PK/WASHER

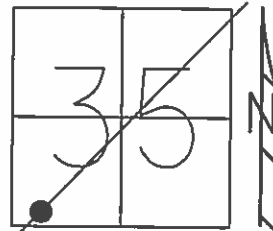
~~ON SURFACE~~ - BELOW 0.3'

~~LEFT~~ - CL PAV'T - RIGHT 1.0'

14.5' TO LT EDGE PAVEMENT

S.L.M. 4+92.59

Grid: Northing: 579136.2995 Easting: 1769575.035



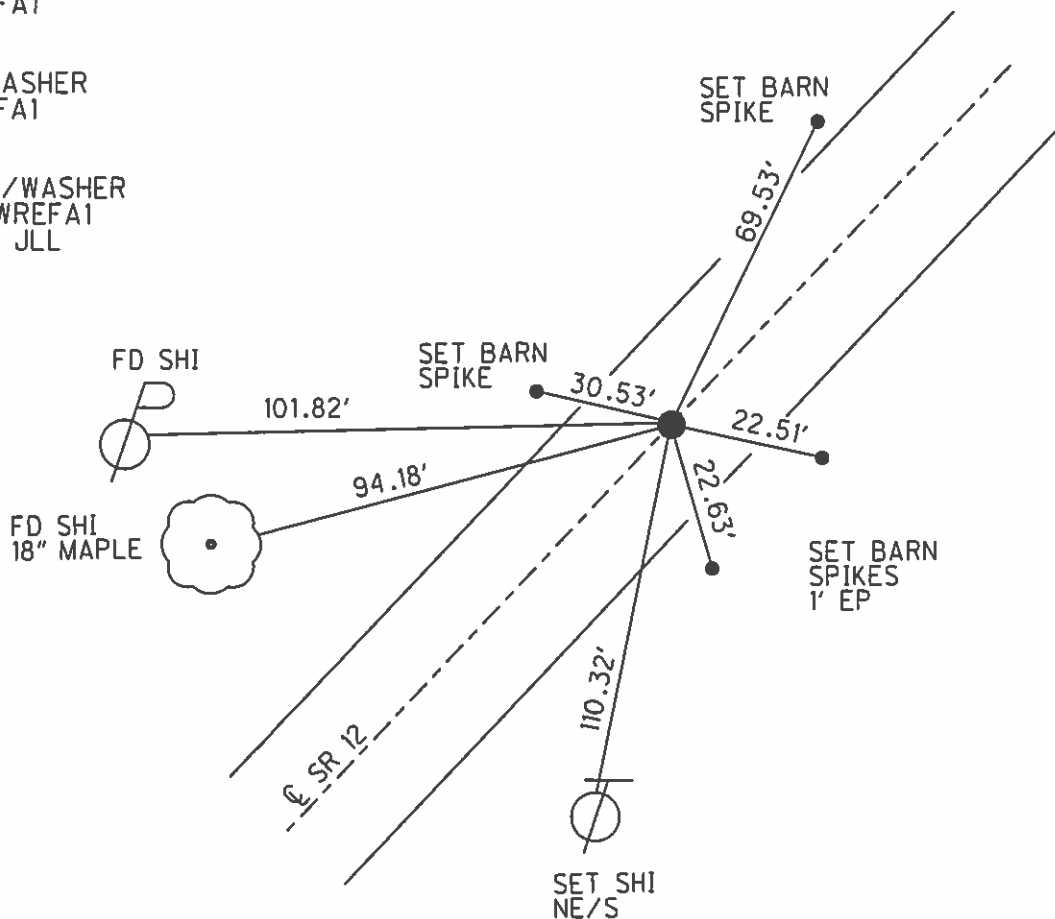
RECORD:
 P.I. $\Delta=0^{\circ}55'$ LT
 STA 4+92.50

SET P.K./WASHER
 11-3-94, CL

FD P.K. SHANK
 GPS, REFA1
 2-15-13

FD PK/WASHER
 GPS, REFA1
 5-6-15

SET MAG/WASHER
 GPS, NEWREFA1
 9-27-16, JLL



O.D.O.T. DISTRICT 2 SURVEY OFFICE

PERSONNEL _____

REFERENCE NO. 1-A

SHEET 2 OF _____

NOTES LOEHRKE

H.C. CANTER BURY

R.C. MOSEER

DATE 7-13-94

WEATHER FAIR

TEMP. +80

ROUTE S.R.12

COUNTY SANDUSKY

TOWNSHIP JACKSON

SECTION 35

T 4 N R 14 E

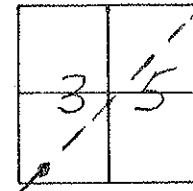
TYPE MONUMENT P.K. / WASHER Reset 11-3-94

ON SURFACE - BELOW Yes C.L.

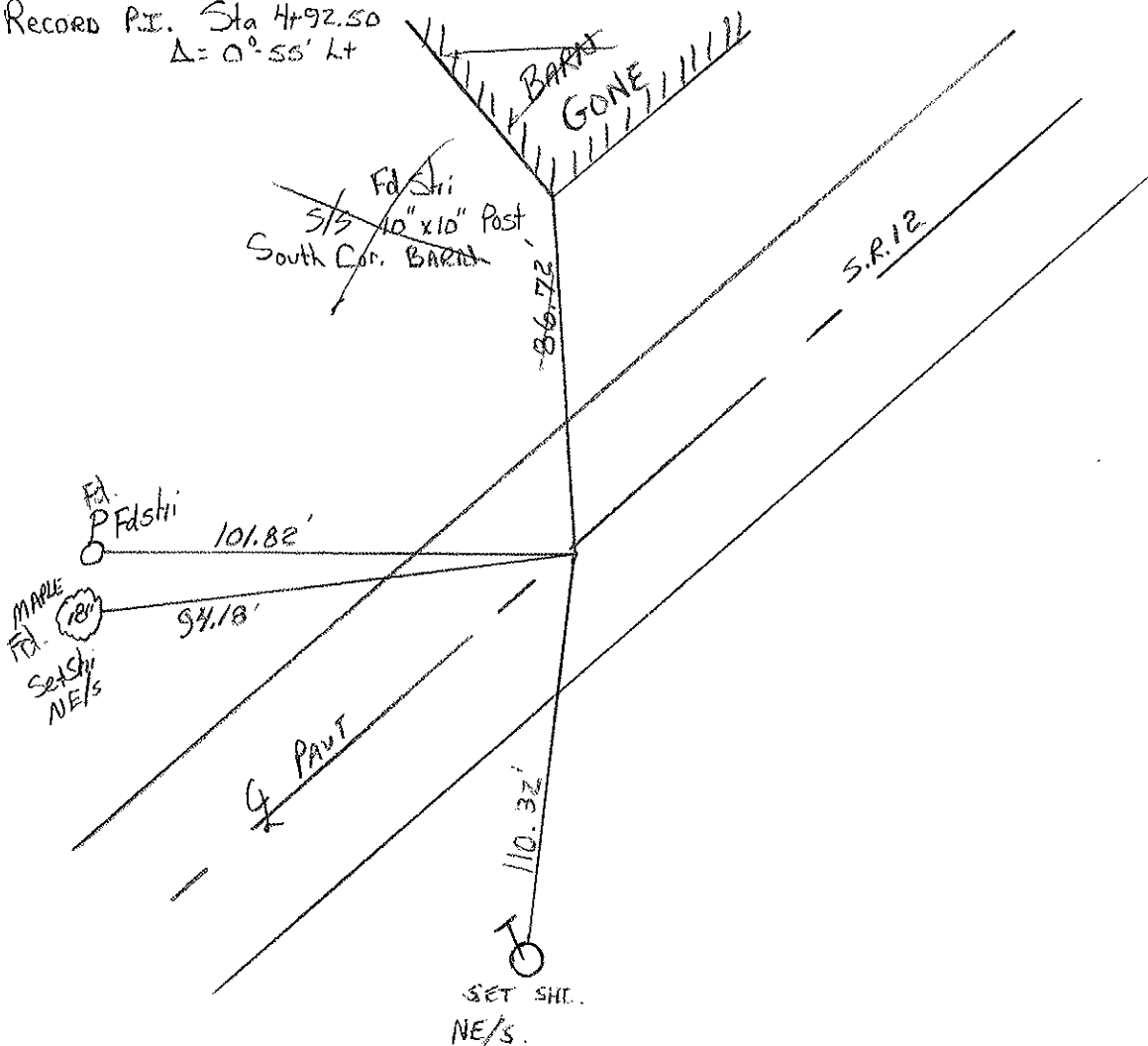
LEFT - Q PAV'T. - RIGHT 1.0' R+

145' TO L EDGE PAVEMENT

S.L.M. 4+92



Record P.I. Sta 4+92.50
 $\Delta = 0^{\circ} 55' \text{ Lt}$



Preventive Maintenance
 Microsurfaced 2000
 Existing Point Uncovered
 Date 9/12/2000 M.C.

County Sandusky S.R. #12

Date 8/23/84 Drawn 9/14/84

Township Jackson

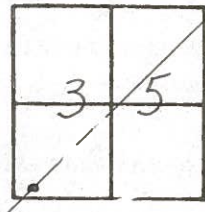
Weather sunny

Section 35

Temp. 70°

T4N, R4E

Personnel Cronin

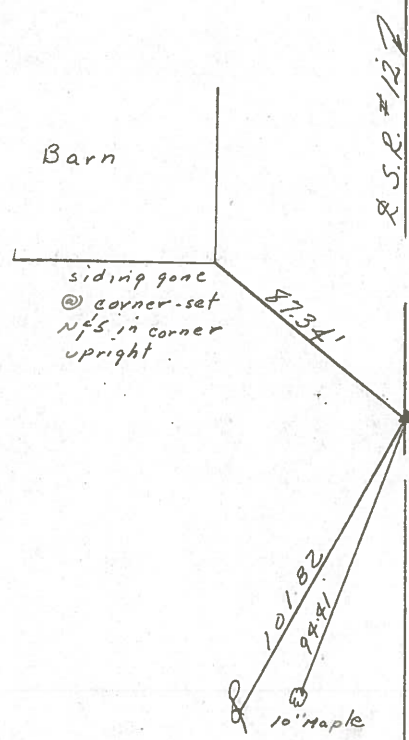


1 A

Ripple

Geyman

Barbour



P.I. - A = 00°55' Lt

4 + 92.5'

set P.K. & washer - R.R.

spk may or may not be below

State Route # 12

County Sandusky

Township Jackson

Section 35

T4N, R14E

Personnel Cronin

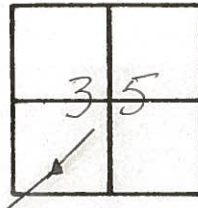
Ripple

Geyman

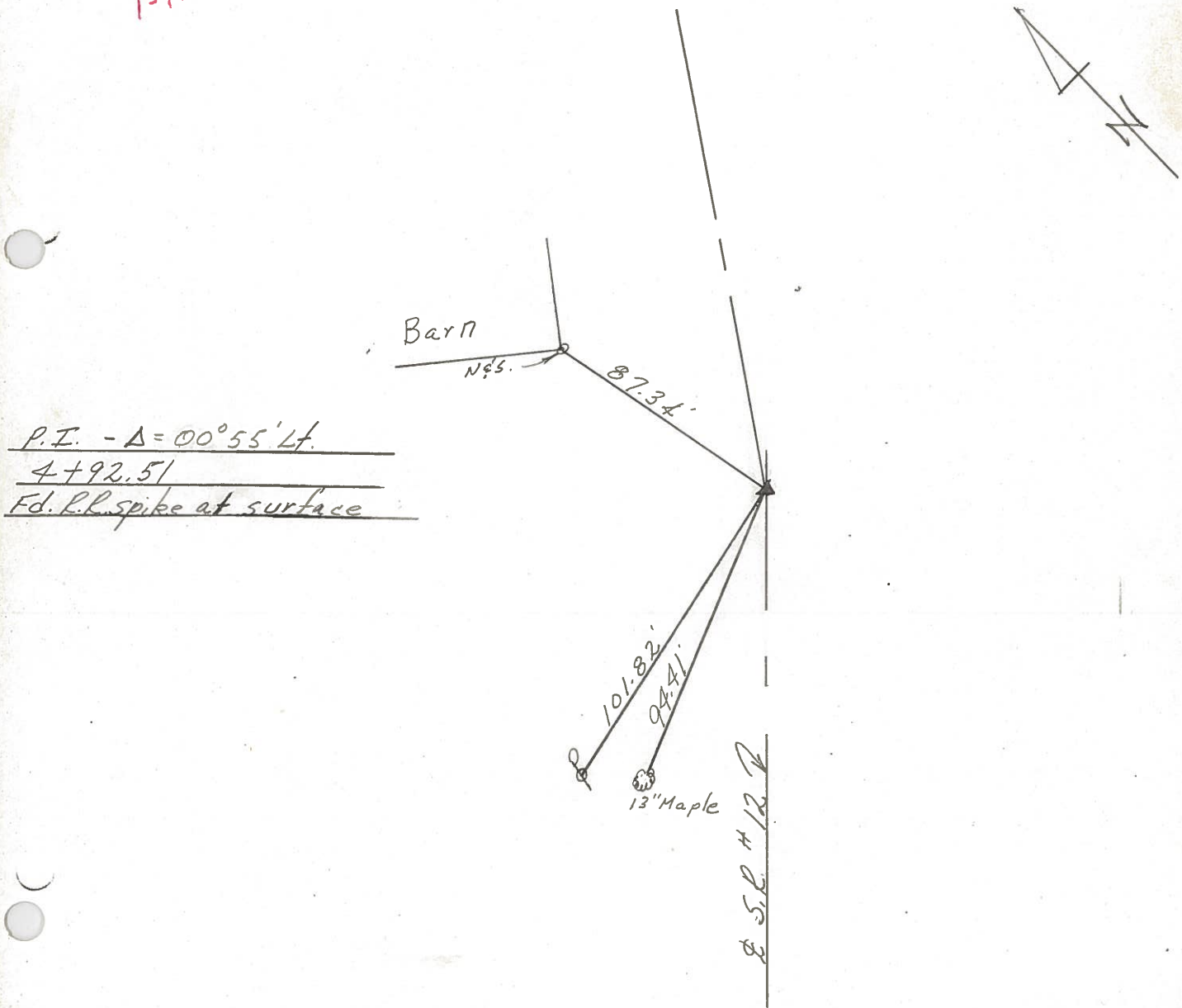
Date 6/11/79

Weather sunny - windy

Temp. 68°



1-A



P.I. - $\Delta = 00^{\circ}55' Lt.$

4+92.51

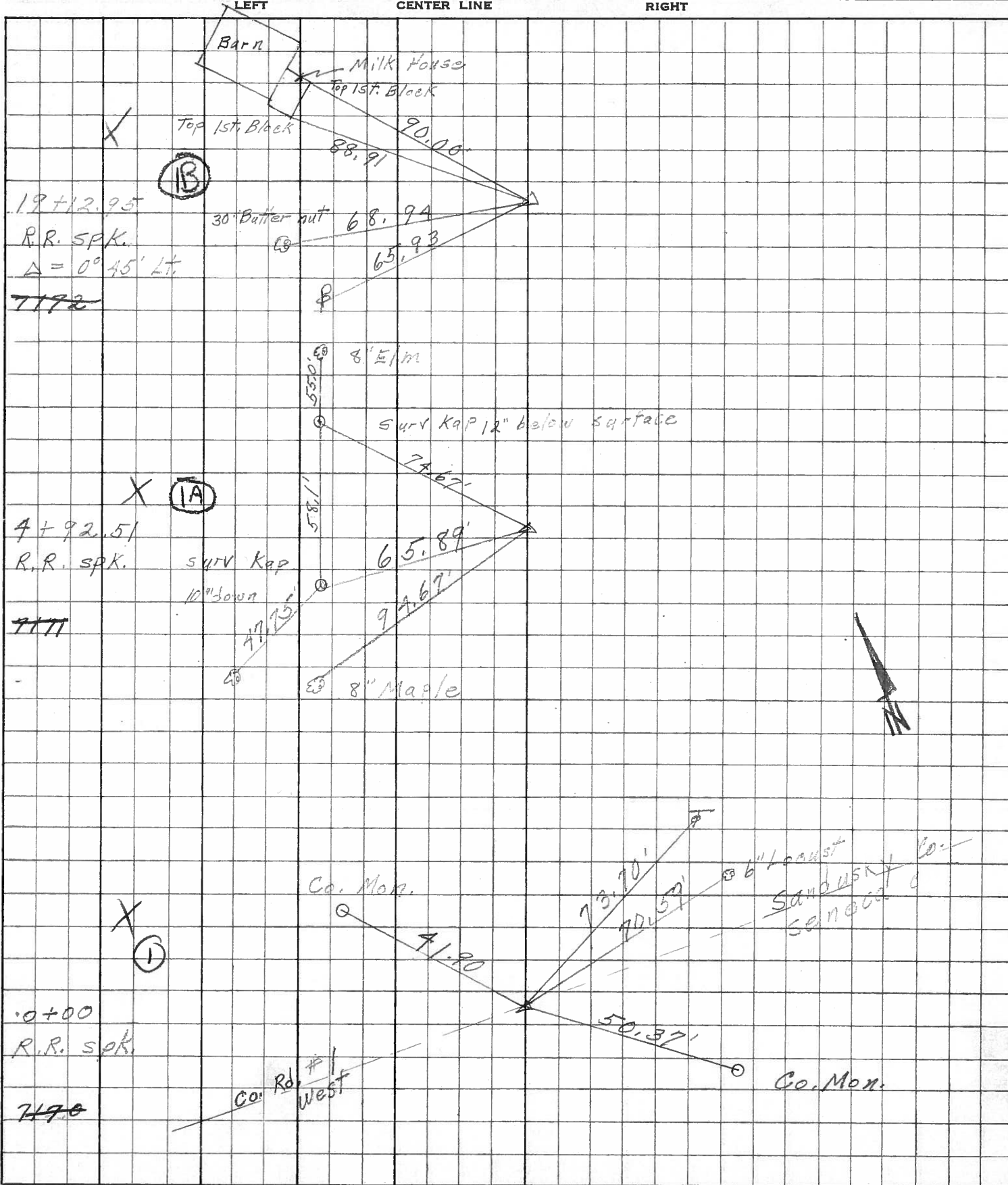
Fd. R.L. spike at surface

S.R. #12

PERSONNEL	TITLE	PERSONNEL	TITLE
Schneider			
Mosser			
Redding			
Potts			

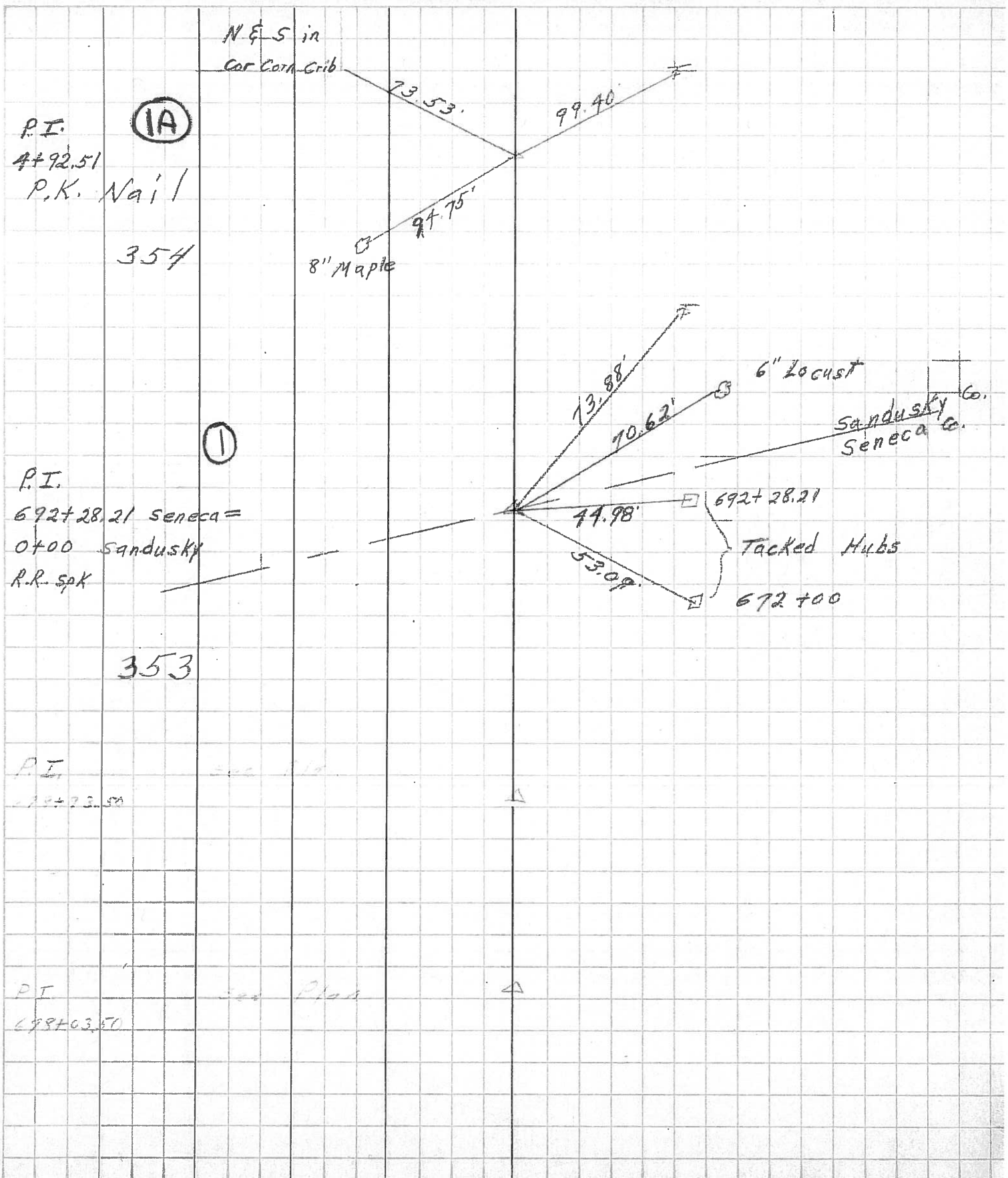
COUNTY Sandusky DATE Jan. 1968
 S. R. 12. WEATHER _____
 SEC. 00 TEMP. _____

DESCRIPTION Ties for Co. rd JOB NO. _____



PERSONNEL	TITLE	PERSONNEL	TITLE	COUNTY	DATE	S. R.	WEATHER	SEC.	TEMP.
Schneider				Sen-Sen	8-10-65	#12	Cloudy	Sen-1292 Sen-0.00	65
Massar									
Lau									
Talbot									

DESCRIPTION Ties For Control Points LEFT CENTER LINE RIGHT JOB NO.



PERSONNEL	TITLE	PERSONNEL	TITLE
COUNTY Sandusky		DATE 12-20-54	
S. R. #12		WEATHER -58	
SEC.		TEMP.	
DESCRIPTION County line N. of Bettsville			JOB NO.
LEFT	CENTER LINE	RIGHT	

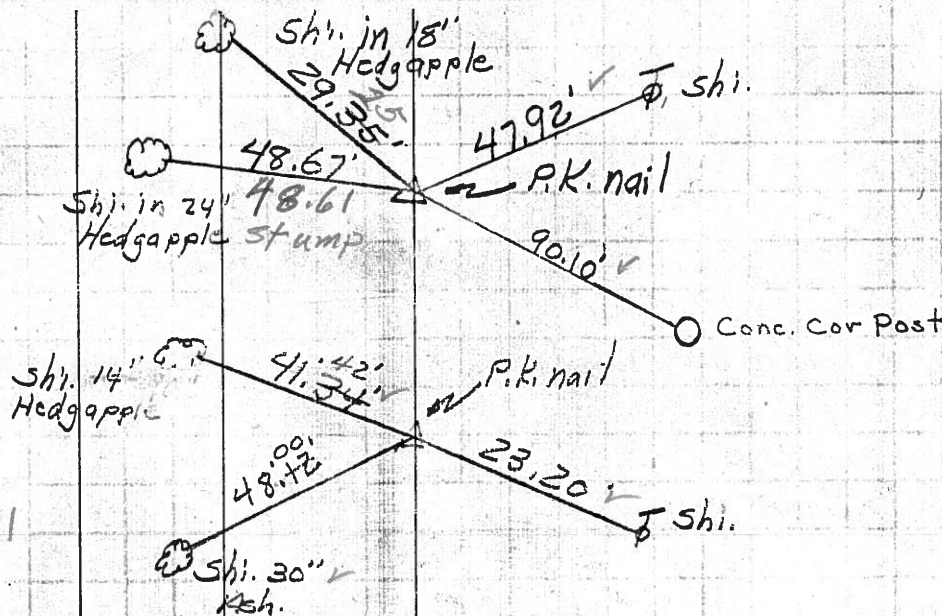
P.I. Sta. 0+00
 Sen. San. Co. line

#353

Found R.R. spk.
 12-18-62

P.I. Sta. 4+92.67
 $\Delta = 0^\circ - 55' \text{ Lt.}$

Found P.K. Nail
 12-18-62



Conc block
 field dr.

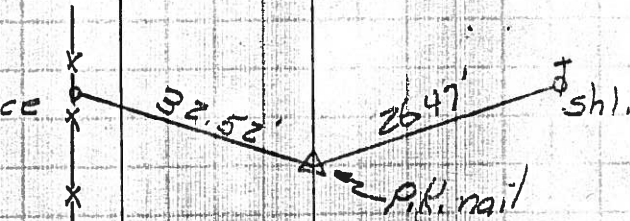
P.I. Sta. 19+44.28
 $\Delta = 0^\circ - 46' \text{ Lt.}$
 12-18-62

Shi. 40"
 Maple

Steel fence
 Post

Sta. 36+59.10
 $\Delta = 5^\circ - 24' \text{ Lt.}$
 Ext. = 6.26'

Could not find



Conc. Hdwls.
 Field dr.