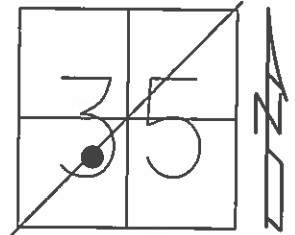


O.D.O.T. DISTRICT 2 SURVEY OFFICE (USE ONLY)

PERSONNEL \_\_\_\_\_ REFERENCE NO. 1 B SHEET 2 OF 24

NOTES O'DONNELL DATE 5-27-15 ROUTE SR 12  
 H.C. LEU WEATHER SUNNY COUNTY SANDUSKY  
 R.C. RHOADES TEMP. 70°F TOWNSHIP JACKSON  
 \_\_\_\_\_ SECTION 35  
 \_\_\_\_\_ T 4 N R 14 E

TYPE MONUMENT PK/WASHER  
 ON SURFACE - ~~BELOW~~ ON  
~~LEFT~~ - Q PAV'T - RIGHT 0.5'  
14' TO LT EDGE PAVEMENT  
 S.L.M. 19+43.03



Grid: Northing: 580127.7717 Easting: 1770633.667

RECORD:  
 P.I.  $\Delta=0^{\circ}45'$  LT  
 STA 19+42.95

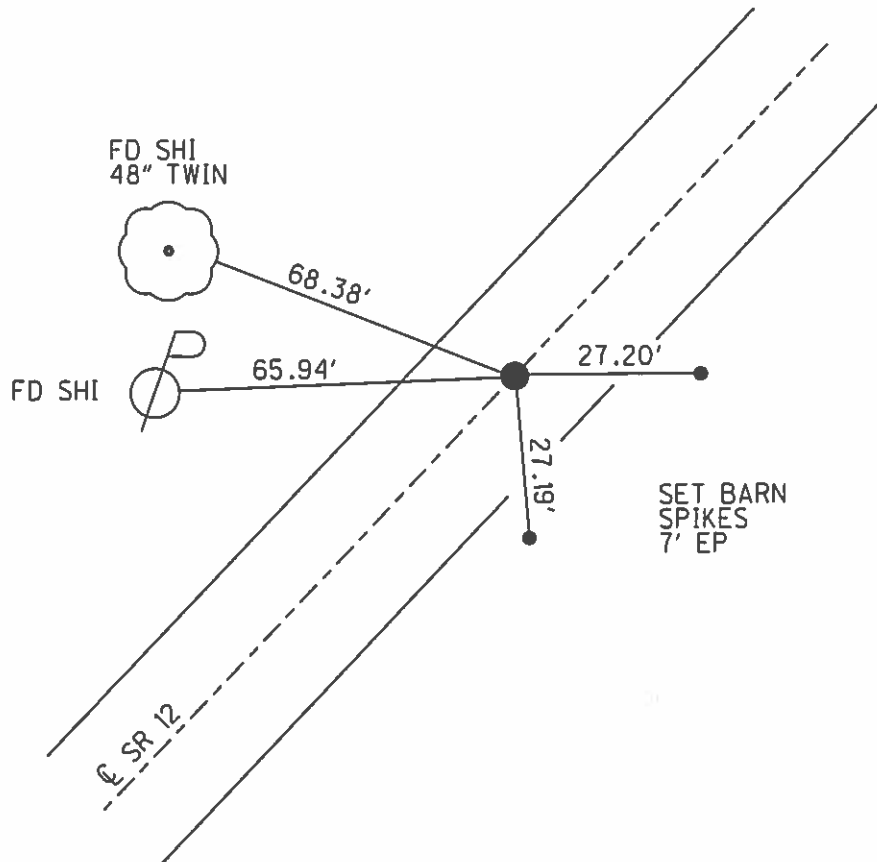
SET P.K./WASHER  
 11-3-94, CL

PREVENTIVE MAINTENANCE  
 MICROSURFACED 2000  
 EXISTING POINT UNCOVERED  
 DATE 9-12-00, MC

FD PK/WASHER  
 GPS, REFB1  
 2-26-13

FD PK/WASHER  
 GPS, REFB1  
 5-27-15

SET MAG/WASHER  
 GPS, NEWREFB1  
 9-27-16, JLL



# O.D.O.T. DISTRICT 2 SURVEY OFFICE

PERSONNEL

REFERENCE NO. 1B

SHEET 3 OF     

NOTES LOEHRKE

H.C. CANTERBURY

R.C. MOSER

DATE 7-13-94

WEATHER FAIR

TEMP. +80

ROUTE S.R. 12

COUNTY SANDUSKY

TOWNSHIP JACKSON

SECTION 35

T 4 N R 14 E

TYPE MONUMENT PK. WASHER

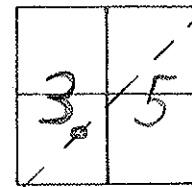
Reset  
11-3-94  
C.L.

ON SURFACE - BELOW Yes

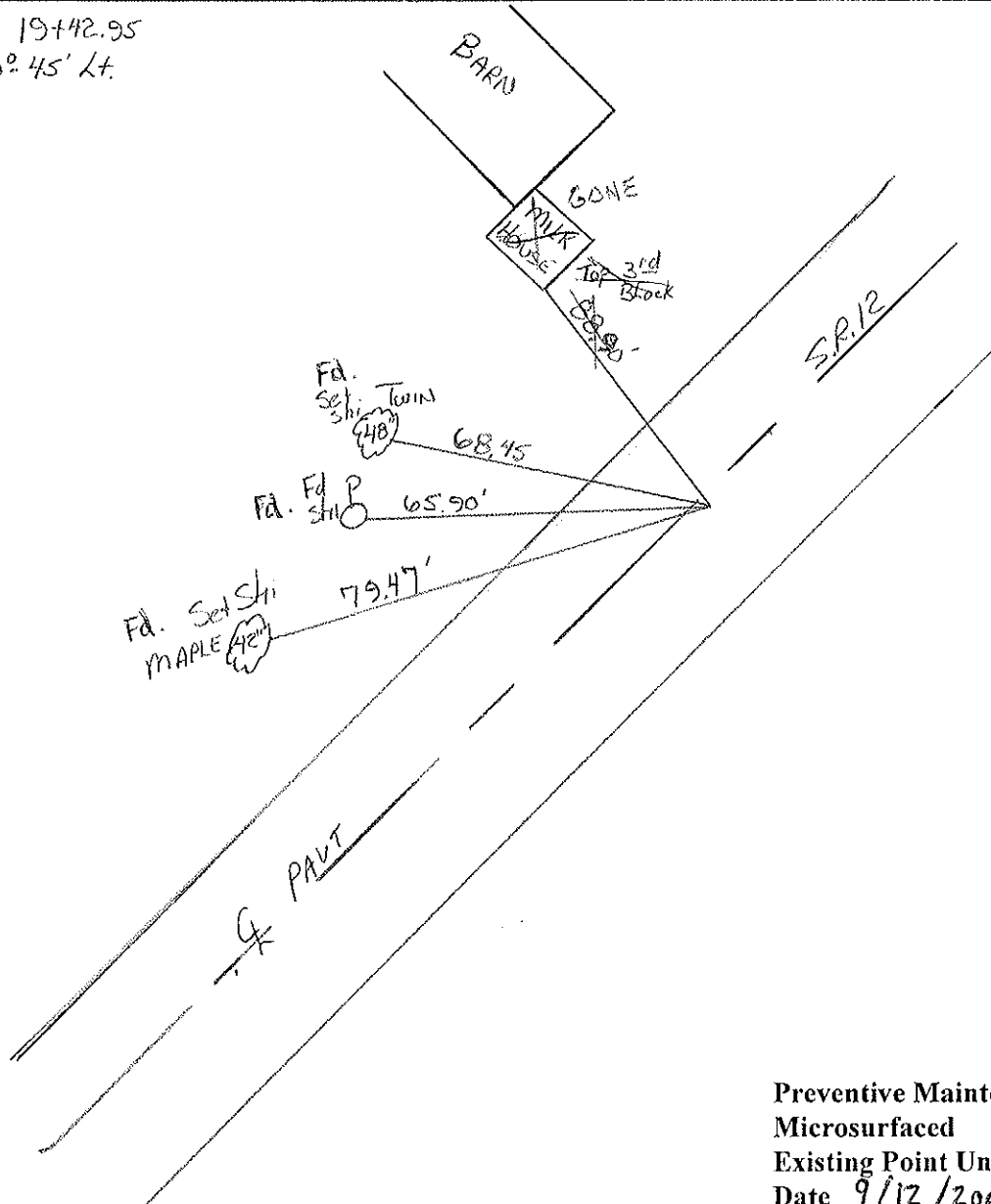
LEFT -  $\odot$  PAV'T. - RIGHT 0.5' RT

14' TO LT EDGE PAVEMENT

S.L.M. 19+47



Record P.I. Sta 19+42.95  
 $\Delta = 00^\circ 45' \text{ Lt.}$



Preventive Maintenance  
Microsurfaced 2000  
Existing Point Uncovered  
Date 9/12/2000 M.C.

County Sandusky S.R. # 12

Township Jackson

Section 35

T4N, R14E

Personnel Cronin

Barbour

Ripple

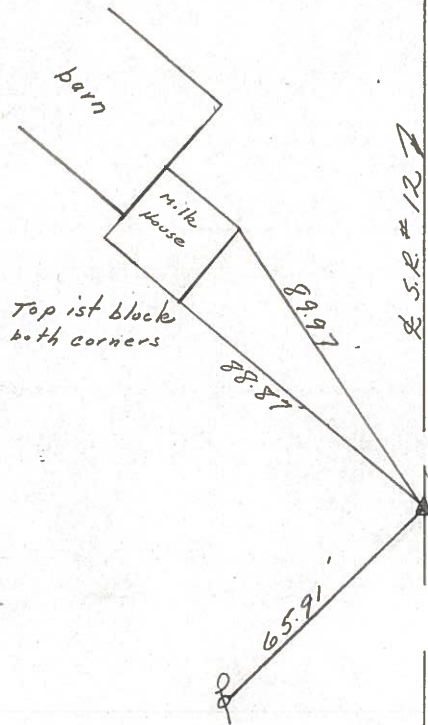
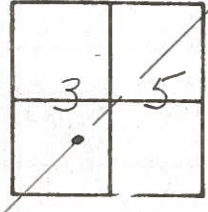
Geyman

1 B

Date 8/23/84 Drawn 9/14/84

Weather sunny

Temp. 70°



P.I. - A = 00° 45' Lt.

19 + 42.95

set P.K. & washer - R.R.

spike may or may not be below

Q.D.O.T. DISTRICT 2 SURVEY OFFICE

Sht. 3 of 17

State Route #12

County Sandusky

Township Jackson

Section 35

T4N, R4E

Personnel Cronin

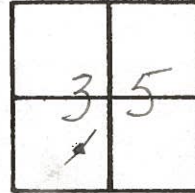
Pippie

Geyman

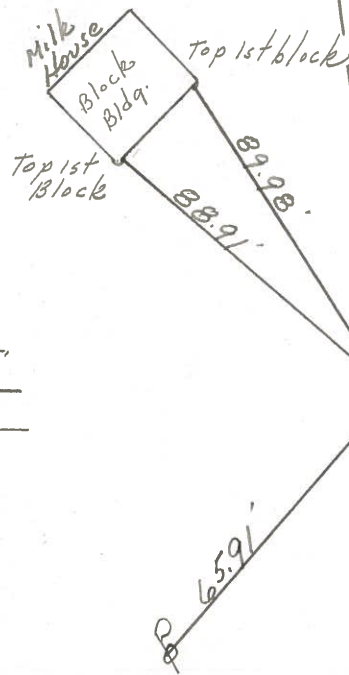
Date 6/11/79

Weather sunny-windy

Temp. 68°



1-B



P.I. Δ = 00° 45' Lt.

19+12.95

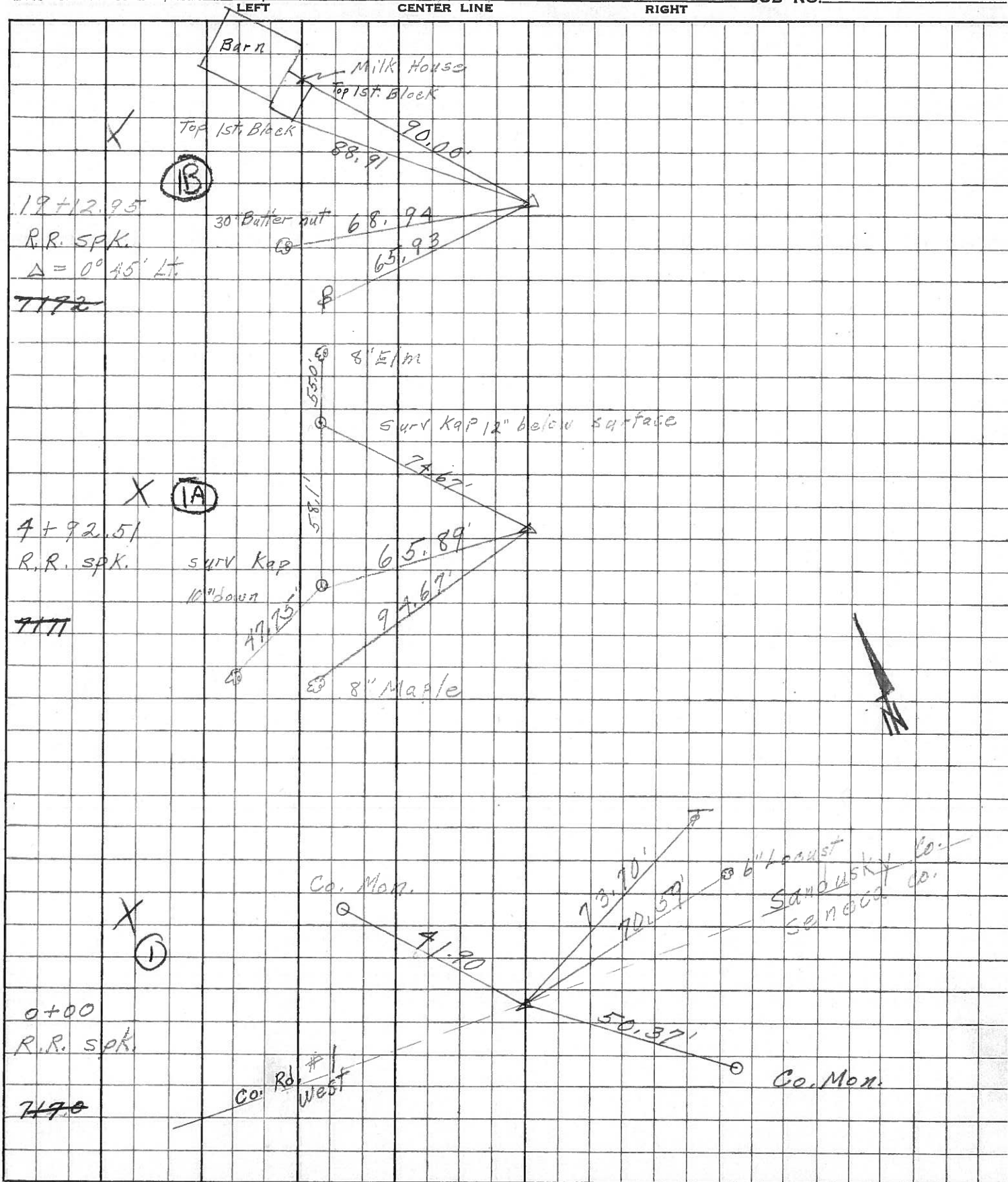
Fd. R.R. spike at surface

S.S.R. #12

PERSONNEL	TITLE	PERSONNEL	TITLE
Schneider			
Mosser			
Redding			
Potts			

COUNTY Sandusky DATE Jan. 1968  
 S. R. 12. WEATHER \_\_\_\_\_  
 SEC. 0.00 TEMP. \_\_\_\_\_

DESCRIPTION Ties for control Points JOB NO. \_\_\_\_\_





PERSONNEL TITLE PERSONNEL TITLE

COUNTY Sandusky

DATE 8-10-65

Schneider

S. R. #12

WEATHER Cloudy

Crew

SEC. San. 0.00

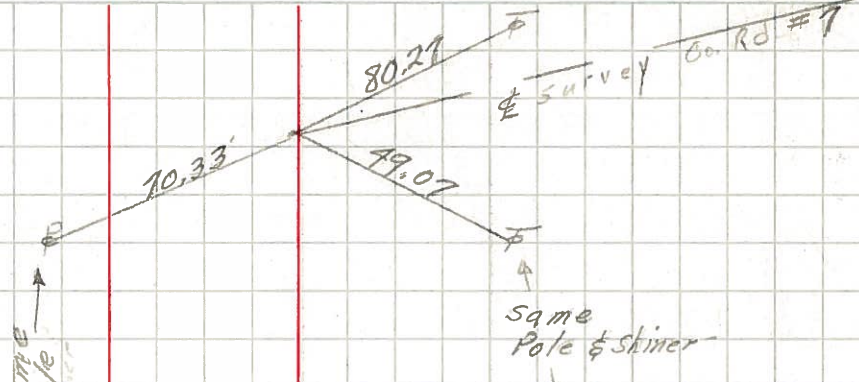
TEMP. 70°

DESCRIPTION Ties for Central Points

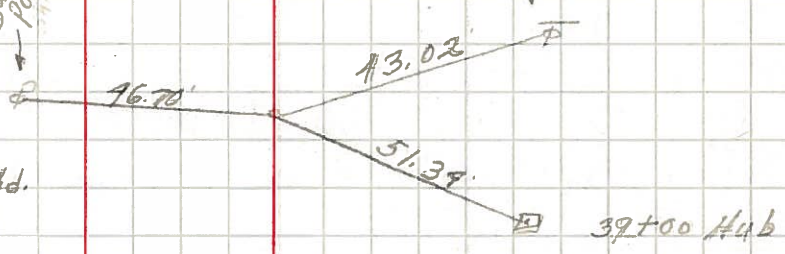
JOB NO.

LEFT CENTER LINE RIGHT

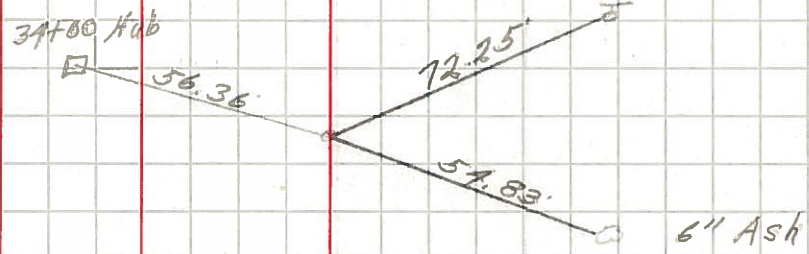
P.O.T. (IF)  
39+78.40



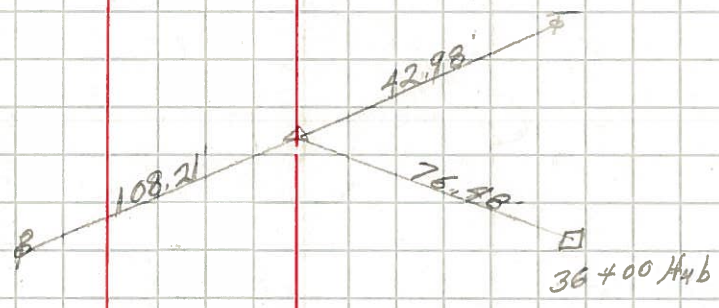
P.T. (IE)  
39+28.81 & Const. BK.  
39+29.22 & Survey & Const. Ahd.



P.C. (IC)  
33+87.14

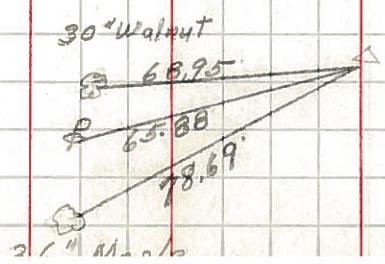


P.I. (ID)  
36+38.18  
 $\Delta = 5^\circ 25' 14''$   
R.R. Spk.



356

P.I. (IB)  
19+12.95  
 $\Delta = 0^\circ 45' 14''$



355



PERSONNEL	TITLE	PERSONNEL	TITLE
COUNTY Sandusky		DATE 12-20-54	
S. R. #12		WEATHER -58	
SEC.		TEMP.	
DESCRIPTION County line N. of Bettsville			JOB NO.
LEFT	CENTER LINE	RIGHT	

