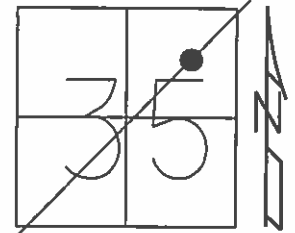


O.D.O.T. DISTRICT 2 SURVEY OFFICE (USE ONLY)

PERSONNEL _____ REFERENCE NO. 2 A SHEET 7 OF 24
 NOTES O'DONNELL DATE 5-27-15 ROUTE SR 12
 H.C. LEU WEATHER SUNNY COUNTY SANDUSKY
 R.C. RHOADES TEMP. 75°F TOWNSHIP JACKSON
 _____ SECTION 35
 _____ T 4 N R 14 E

TYPE MONUMENT MAG/WASHER
 ON SURFACE - ~~BELOW~~ ON
 LEFT - ☉ PAV'T - RIGHT ON
13.5' TO RT EDGE PAVEMENT
 S.L.M. 51+19.89
 Grid: Northing: 582423.3849 Easting: 1772822.166



RECORD:
 SET P.K./WASHER
 11-3-94, CL

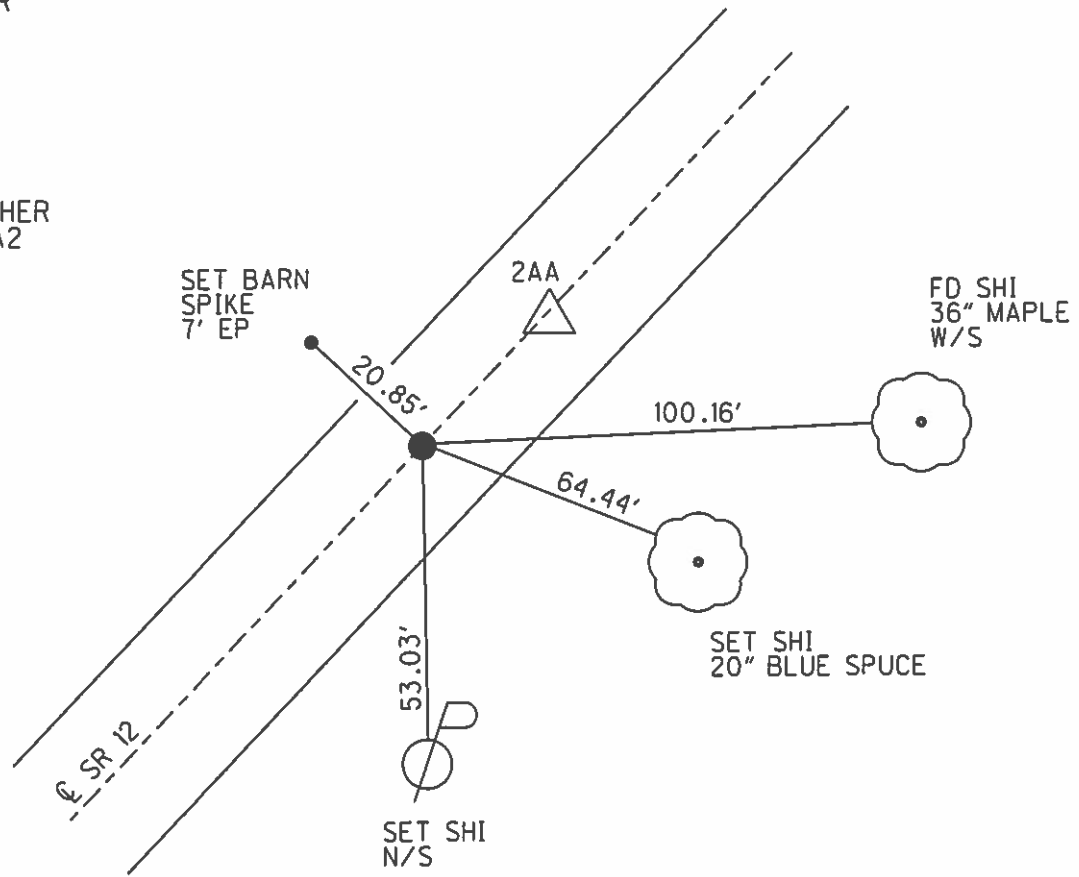
DIST. 2A-2AA= 25.03'

PREVENTIVE MAINTENACE
 MICROSURFACED 2000
 EXISTING POINT UNCOVERED
 DATE 9-12-00, MC

FD PK/WASHER
 GPS, REFA2
 3-26-13

FD MAG NAIL
 GPS, REFA2
 5-27-15

SET MAG/WASHER
 GPS, NEWREFA2
 9-29-16, DCH



O.D.O.T. DISTRICT 2 SURVEY OFFICE

PERSONNEL _____ REFERENCE NO. 2A SHEET 7 OF _____

NOTES LOENRKE

H.C. CANTERBURY DATE 7-13-94 ROUTE S.R.12

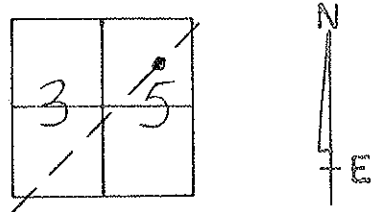
R.C. MOSER WEATHER FAIR COUNTY SANDUSKY

_____ TEMP. +86 TOWNSHIP Jackson

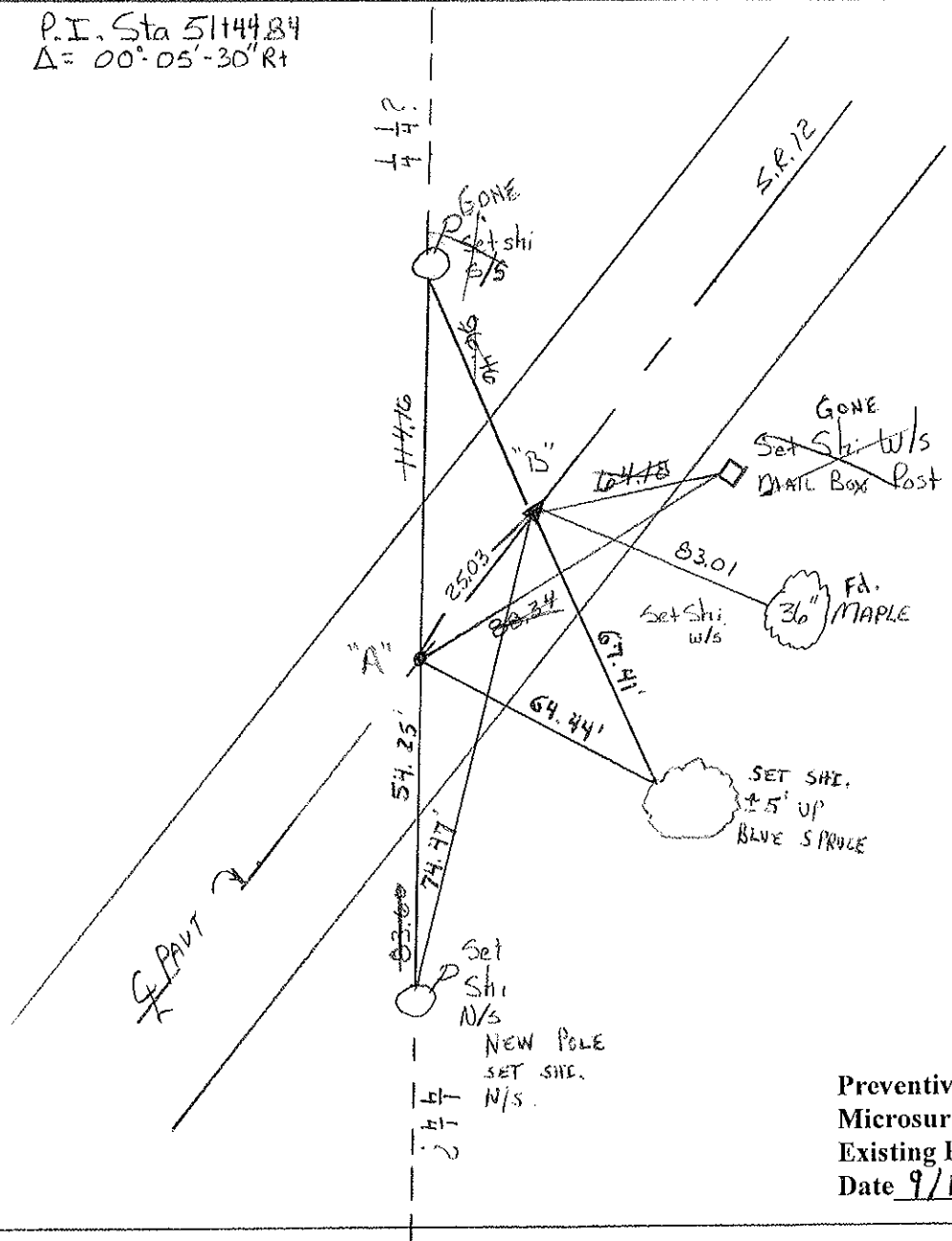
_____ SECTION 35

_____ T 4 N 14 E

TYPE MONUMENT P.K. / WASHER @ "A" & R.R. SPIKE @ "B"
 ON SURFACE - BELOW Yes
 LEFT - Q PAV'T. - RIGHT Q PAV'T.
13.5 TO Rt EDGE PAVEMENT
 S.L.M. 51+29 and 51+54 ⇒ P.I.



RECORD P.I. Sta 51+44.84
 $\Delta = 00^{\circ}05'30''$ Rt



Preventive Maintenance
 Microsurfaced 2000
 Existing Point Uncovered
 Date 9/12/2000 M.C.

County Sandusky S.R. #12

Date 8/27/84 Drawn 9/14/84

Township Jackson

Weather sunny

Section 35

Temp. 68°

T4N, R4E

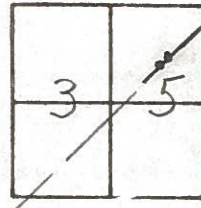
Personnel Cronin

Ripple

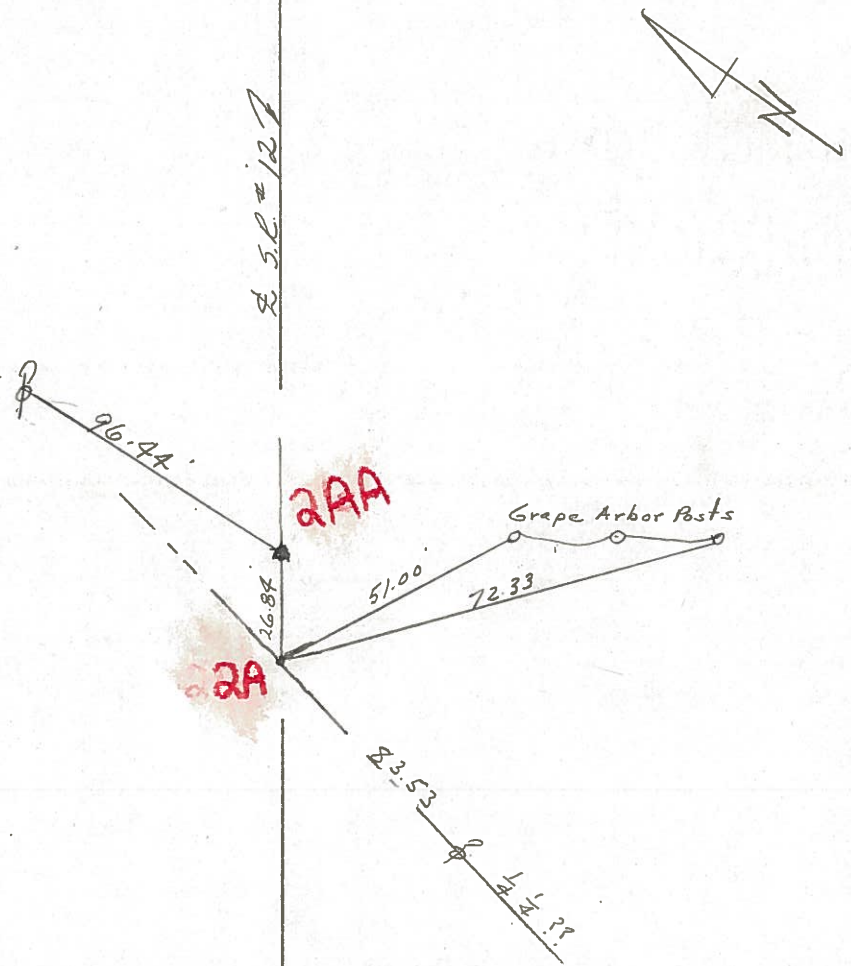
Geyman

Barbour

2 A



P.I. - A = 00°05'30" Rt.
51+44.84
Ed. P.K. 4" below surface
(head broken off) set Nc's
't' ties in pavement



O.D.O.T. DISTRICT 2 SURVEY OFFICE

Sht. 7 of 17

State Route #12

County SANDUSKY

Township JACKSON

Section 35

T4N, R14E

Personnel Cronin

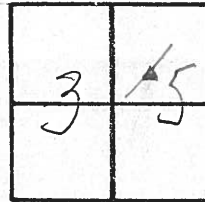
Ripple

Geyman

Date 6/12/79

Weather sunny

Temp. 72°

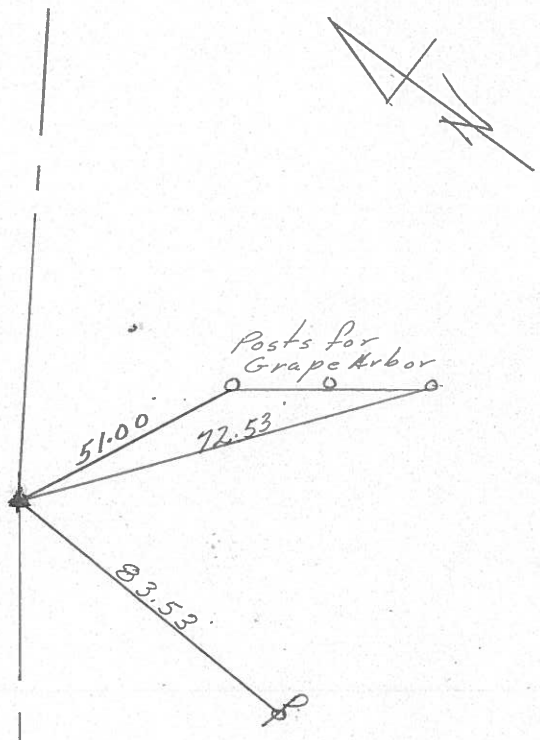


2-A

P.I. - $\Delta = 00^{\circ}05'30''$ Lt.

51+44.84

Ed. R.R. spike at surface



E.S.C. #127