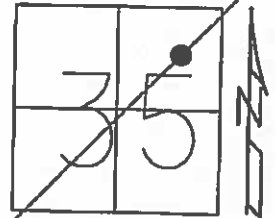


O.D.O.T. DISTRICT 2 SURVEY OFFICE (USE ONLY)

PERSONNEL _____ REFERENCE NO. 2 AA SHEET 8 OF 24
 NOTES O'DONNELL DATE 5-27-15 ROUTE SR 12
 H.C. LEU WEATHER SUNNY COUNTY SANDUSKY
 R.C. RHOADES TEMP. 75°F TOWNSHIP JACKSON
 SECTION 35
 T 4 N R 14 E

TYPE MONUMENT PK/WASHER
 ON SURFACE - ~~BELOW~~ ON
 LEFT - ☉ PAV'T - RIGHT ON
13.5' TO RT EDGE PAVEMENT
 S.L.M. 51+44.85



Grid: Northing: 582443.6085 Easting: 1772839.554

RECORD:
 P.I. $\Delta=0^{\circ}05'30''$
 STA 51+44.84

DIST. 2A-2AA= 25.03'

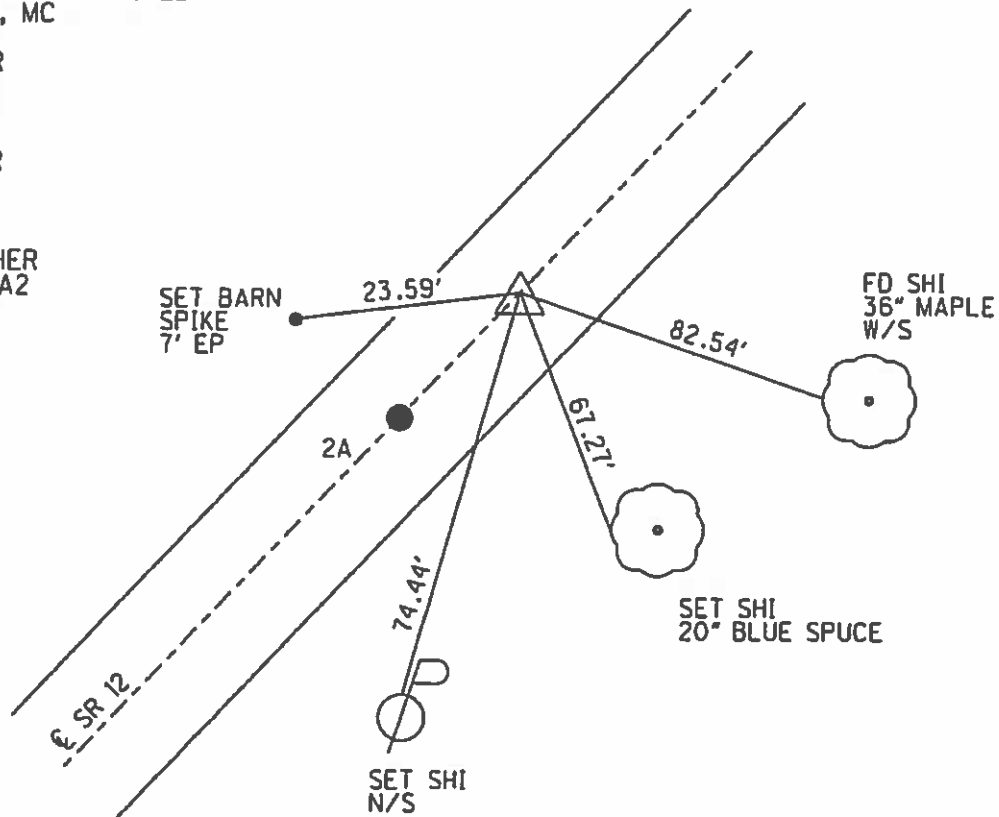
RESET
 11-3-94, CL

PREVENTIVE MAINTENANCE
 MICROSURFACED 2000
 EXISTING POINT UNCOVERED
 DATE 9-12-00, MC

FD PK/WASHER
 GPS, REFAA2
 3-26-13

FD PK/WASHER
 GPS, REFAA2
 5-27-15

SET MAG/WASHER
 GPS, NEWREFAA2
 9-29-16, DCH



O.D.O.T. DISTRICT 2 SURVEY OFFICE

PERSONNEL

REFERENCE NO. 2A

SHEET 7 OF

NOTES LOEHRKE

H.C. CANTERBURY

R.C. MOSEK

DATE 7-13-94

WEATHER FAIR

TEMP. +86

ROUTE S.R.12

COUNTY SANDUSKY

TOWNSHIP JACKSON

SECTION 35

T4NR14E

Reset 11-3-94 C.L.

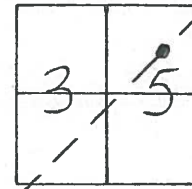
TYPE MONUMENT P.K. / WASHER @ "A" & R.R. SPK @ "B"

ON SURFACE - ~~BELOW~~ Yes

~~LEFT - & PAV'T.~~ RIGHT & PAVI

135 TO Rt EDGE PAVEMENT

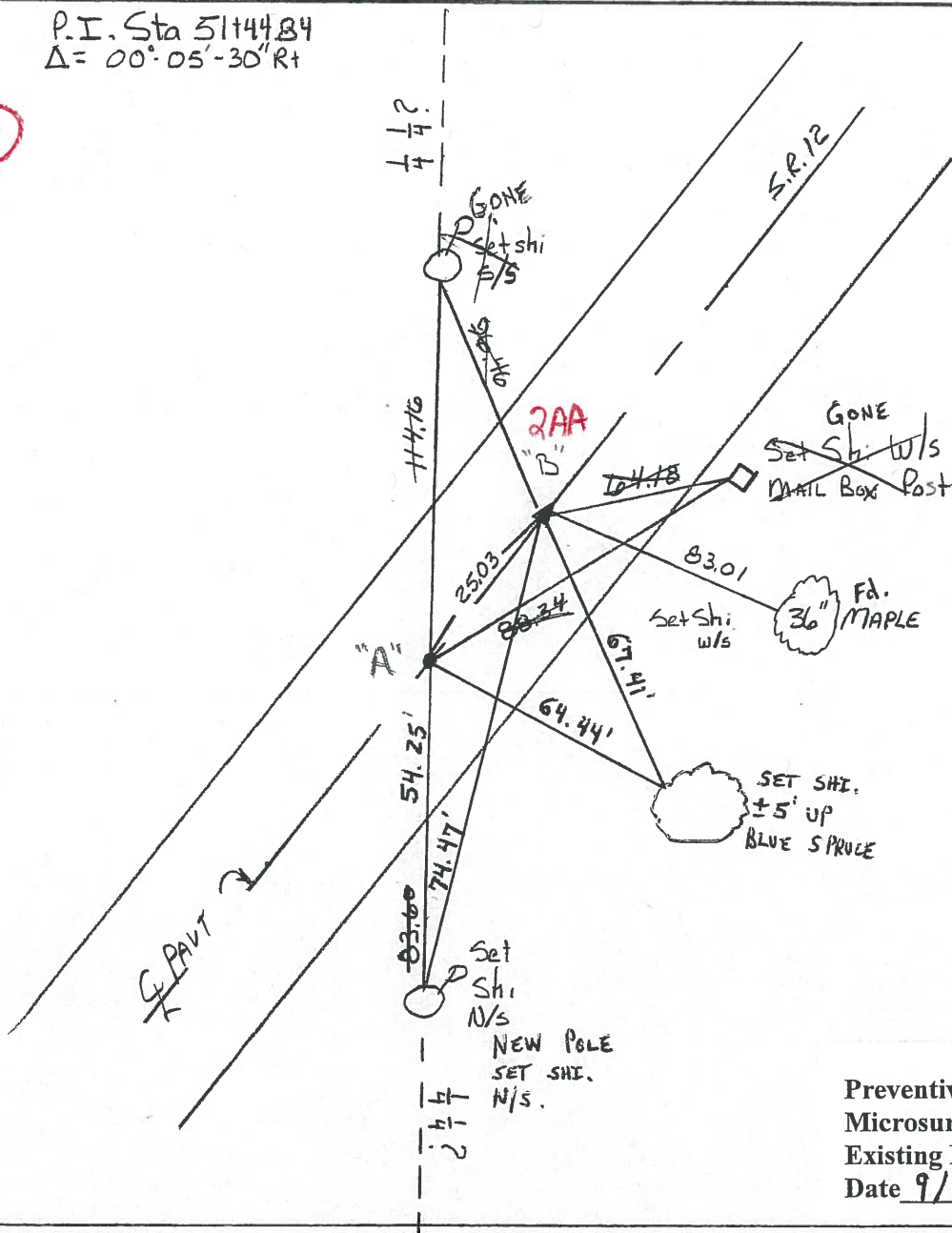
S.L.M. 51+29 and 51+54 → P.I.



RECORD

P.I. Sta 51+44.84
 $\Delta = 00^{\circ} 05' 30''$ Rt

2AA



Preventive Maintenance
 Microsurfaced 2000
 Existing Point Uncovered
 Date 9/12/2000 M.C.

County Sandusky S.R. #12

Township Jackson

Section 35

T4N, R4E

Personnel Cronin

Ripple

Geyman

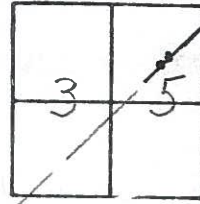
Barbour

2 A

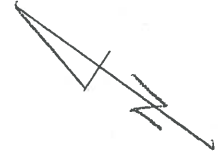
Date 8/27/84 Drawn 9/14/84

Weather sunny

Temp. 68°



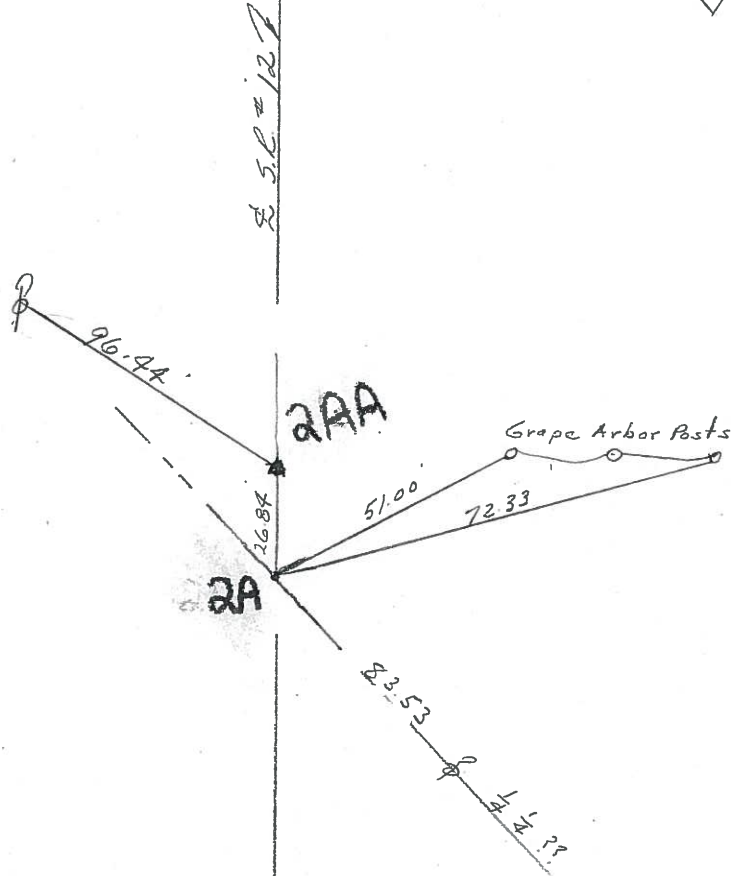
2AA



P.I. - A = 00° 05' 30" Rt

51+44.84

Ed. P.K. 4" below surface
(head broken off) set Nc's
'+' ties in pavement



PERSONNEL TITLE PERSONNEL TITLE

COUNTY Sandusky

DATE Feb-11-64

Silvester

g

Crow

S. R. 12-113

WEATHER Part Clear

SEC.

TEMP. 25°

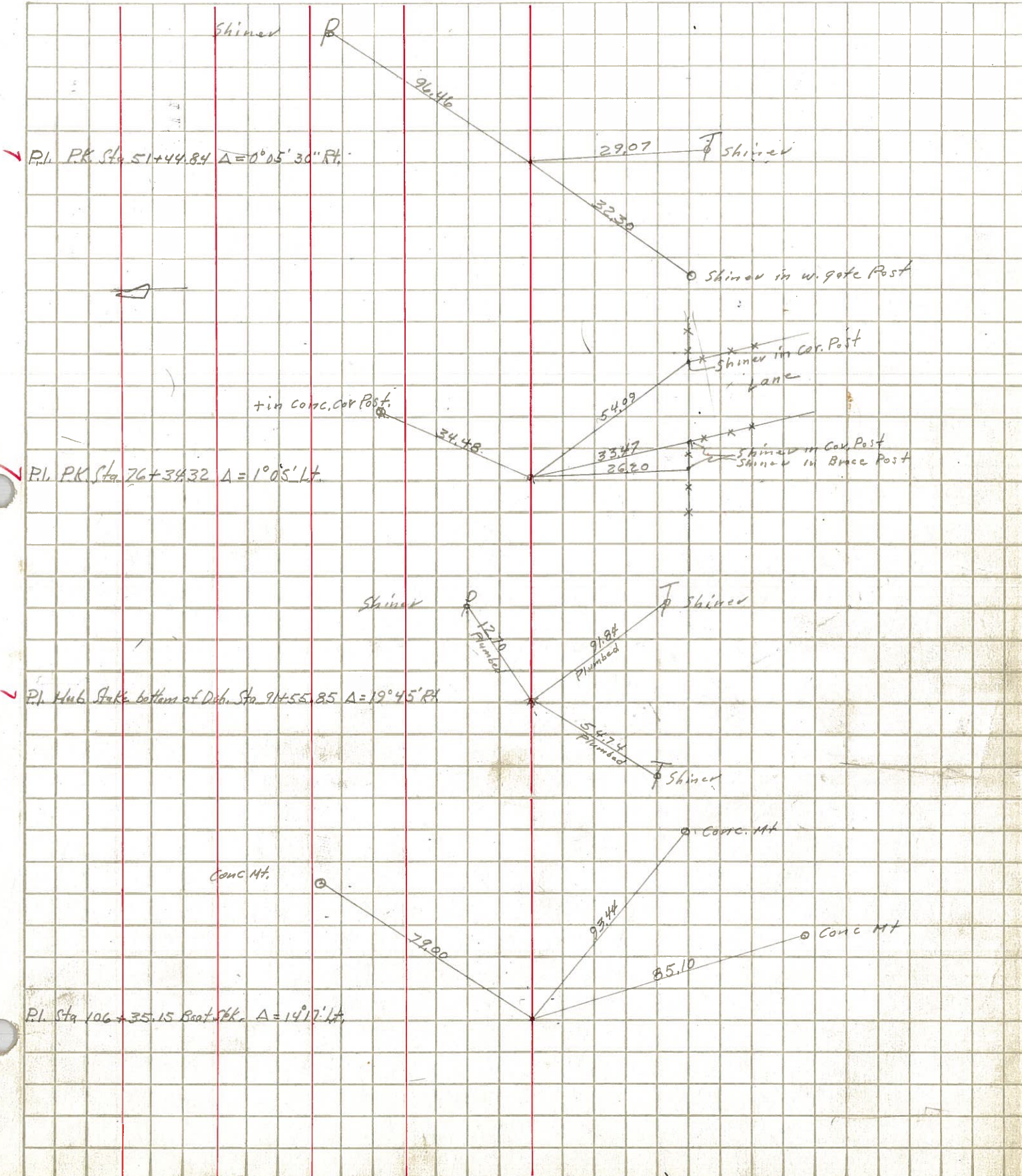
DESCRIPTION wit. ties

LEFT

CENTER LINE

RIGHT

JOB NO.



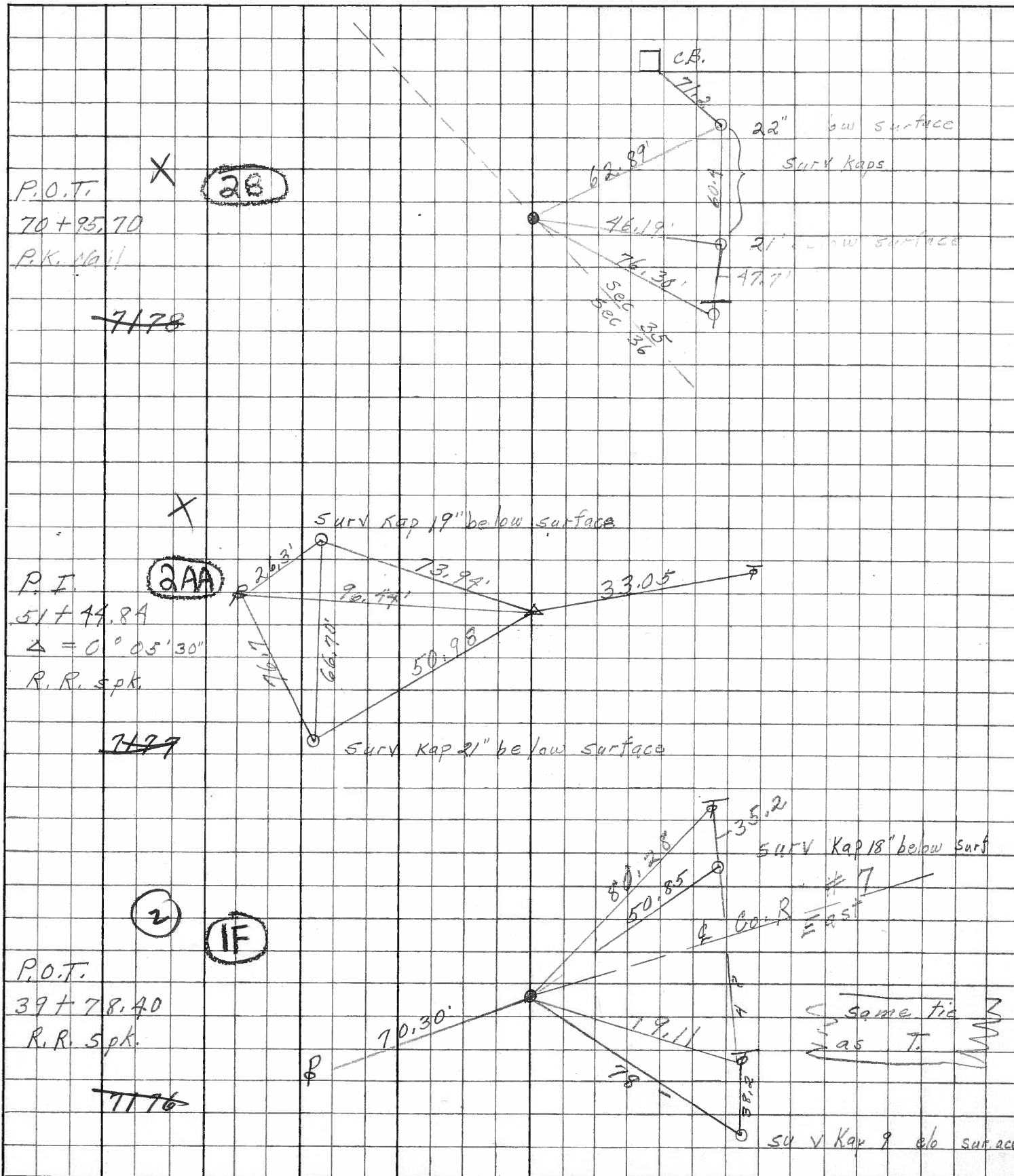
PERSONNEL	TITLE	PERSONNEL	TITLE
Schneider			
Mosser			
Redding			
JTS			

COUNTY _____ DATE Jan 1

S. R. _____ WEATHER _____

SEC. _____ TEMP. _____

DESCRIPTION Ties f LEFT CENTER LINE RIGHT JOB NO. _____



PERSONNEL TITLE PERSONNEL TITLE

Schneider

COUNTY Sandusky

DATE 8-10-65

Crew

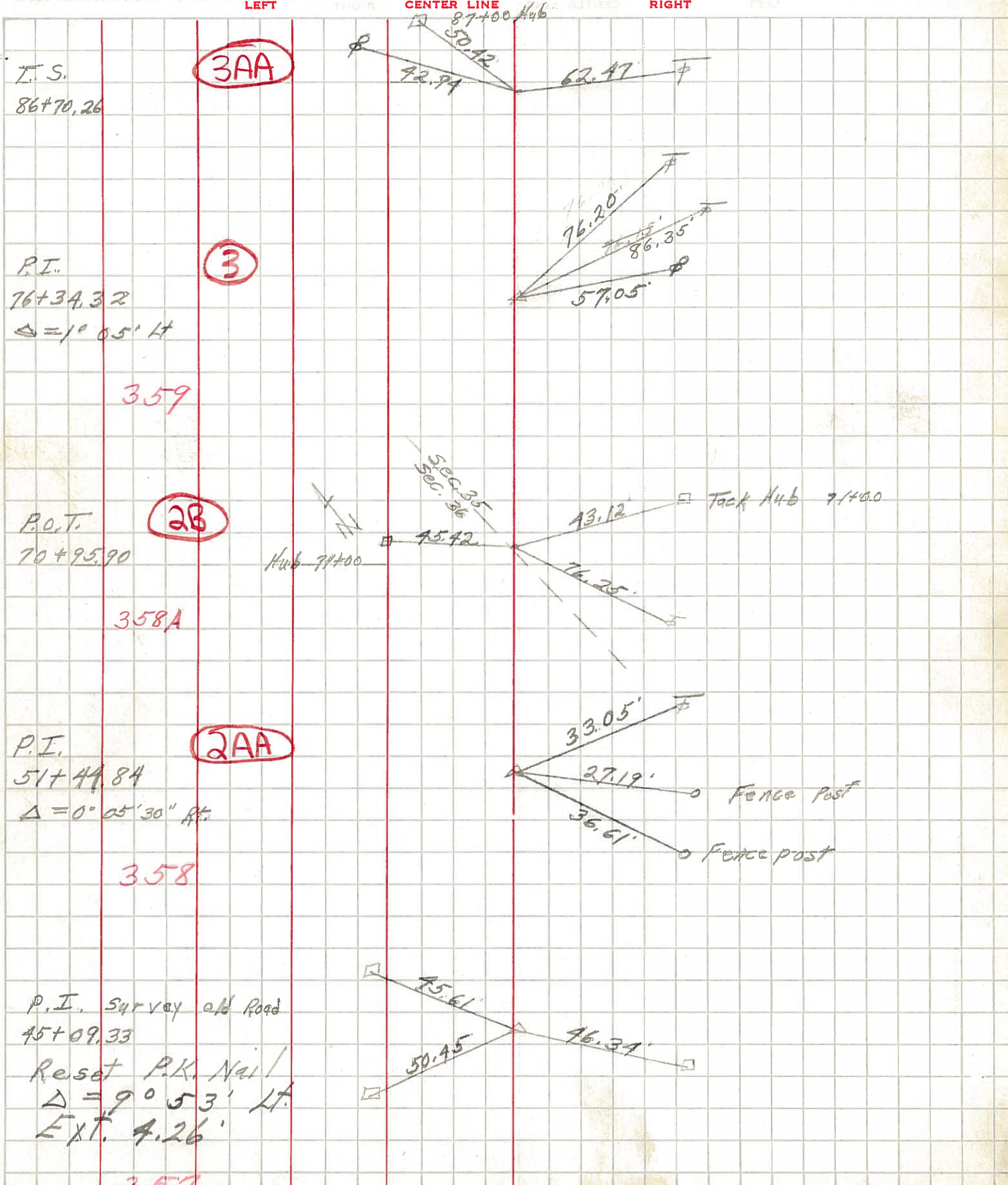
S. R. # 12

WEATHER cloudy

SEC. TEMP. ?

DESCRIPTION Ties for Control Points

JOB NO.



PERSONNEL	TITLE	PERSONNEL	TITLE	COUNTY	DATE	WEATHER	TEMP.
				Sandusky	8-23-55		
				S. R. #12			
				SEC.			
DESCRIPTION	Relocation ties						JOB NO.
	LEFT	CENTER LINE	RIGHT				

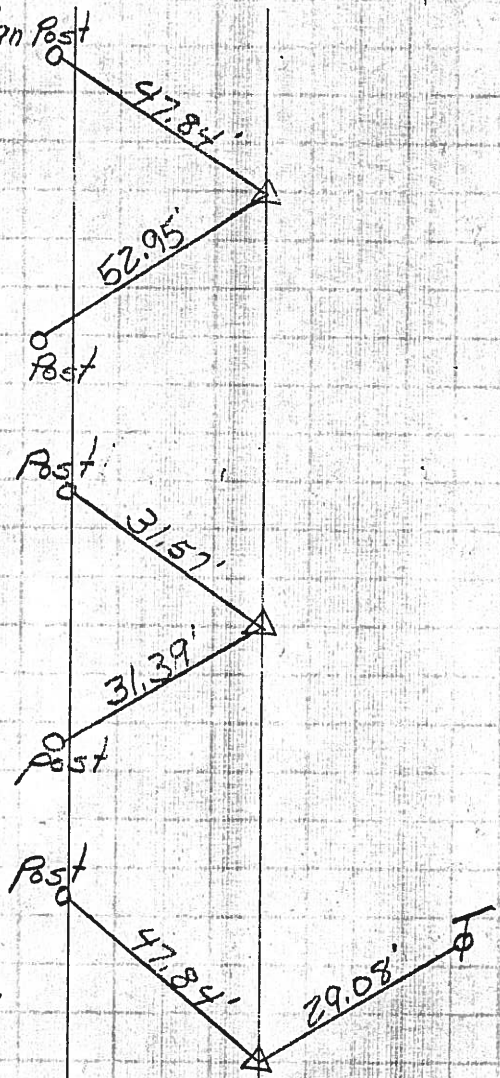
Steel Highway Sign Post

1-mile N of 50th
 S. Co. Line, S-Curve
 relocation

P.I. Sta. 45+19.58
 $\Delta = 0^\circ - 03' 27''$

P.I. Sta. 48+13.3

P.I. Sta. 51+55.24 Survey
 51+46.88 Const.
 $\Delta = 0^\circ - 09' 24''$ R/L

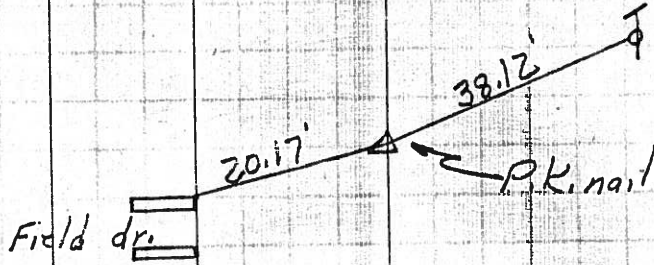


PERSONNEL	TITLE	PERSONNEL	TITLE

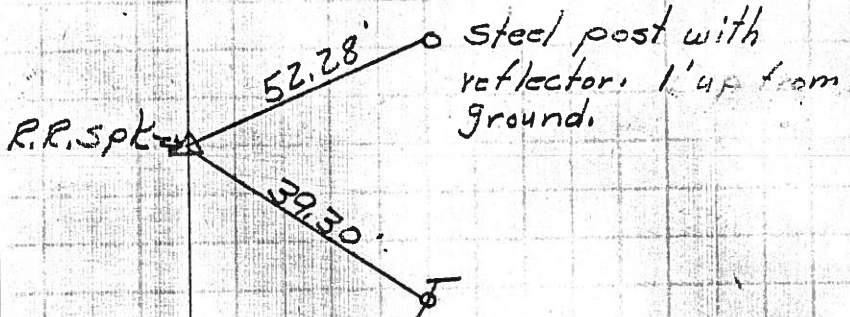
COUNTY Sandusky DATE 12-20-54
 S. R. #12 WEATHER
 SEC. _____ TEMP. _____

DESCRIPTION	LEFT	CENTER LINE	RIGHT	JOB NO.
-------------	------	-------------	-------	---------

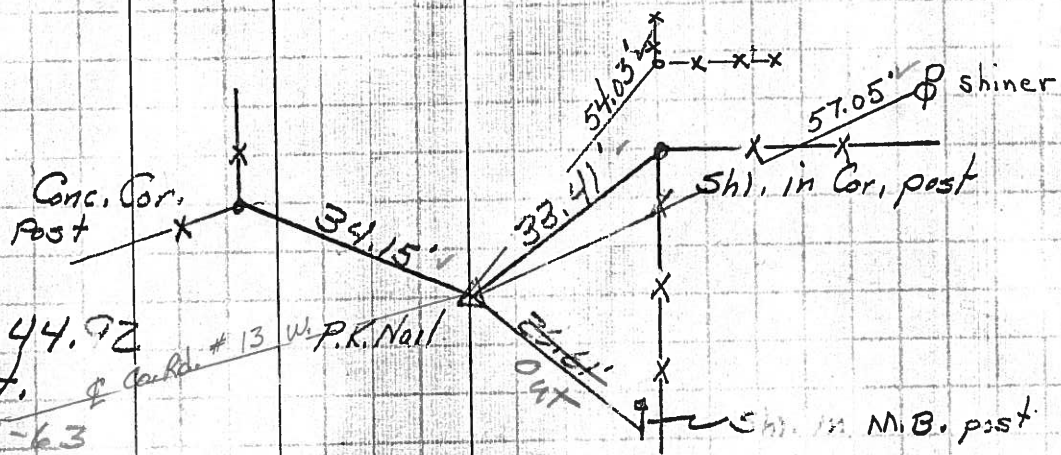
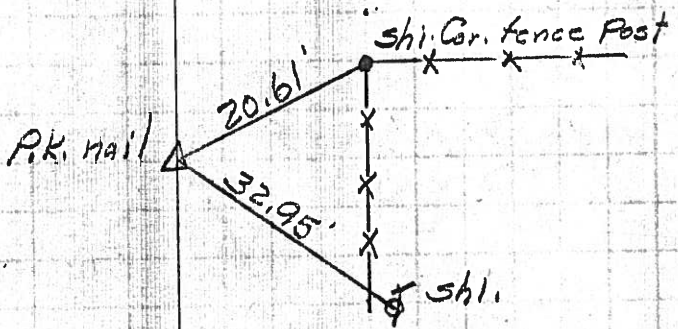
P.I. Sta. 45+10.58
 $\Delta = 9^{\circ} - 53' \text{ Lt}$
 Ext. = 4.26



P.I. Sta. 48+13.30
 $\Delta = 18^{\circ} - 30' \text{ Rt}$
 Ext. = 10.0



P.I. Sta. 51+55.24
 $\Delta = 8^{\circ} - 30' \text{ Lt}$
 Ext. = 3.47



P.I. Sta. 76+44.92
 $\Delta = 19^{\circ} - 07' \text{ Lt}$
 Found 1-4-63
 & Cor. #13 w/ P.K. Nail