

O.D.O.T. DISTRICT 2 SURVEY OFFICE (USE ONLY)

PERSONNEL _____ REFERENCE NO. 2 B SHEET 9 OF 24

NOTES O'DONNELL DATE 5-27-15 ROUTE SR 12
 H.C. LEU WEATHER CLEAR COUNTY SANDUSKY
 R.C. RHOADES TEMP. 75°F TOWNSHIP JACKSON
 SECTION 35
 T 4 N R 14 E

TYPE MONUMENT PK/WASHER

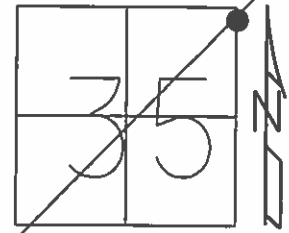
~~ON SURFACE~~ - BELOW 5"

LEFT - CL PAV'T - RIGHT ON

13.5' TO RT EDGE PAVEMENT

S.L.M. 70+95.97

Grid: Northing: 583920.4654 Easting: 1774114.594



RECORD: P.O.T.
 STA 70+95.97

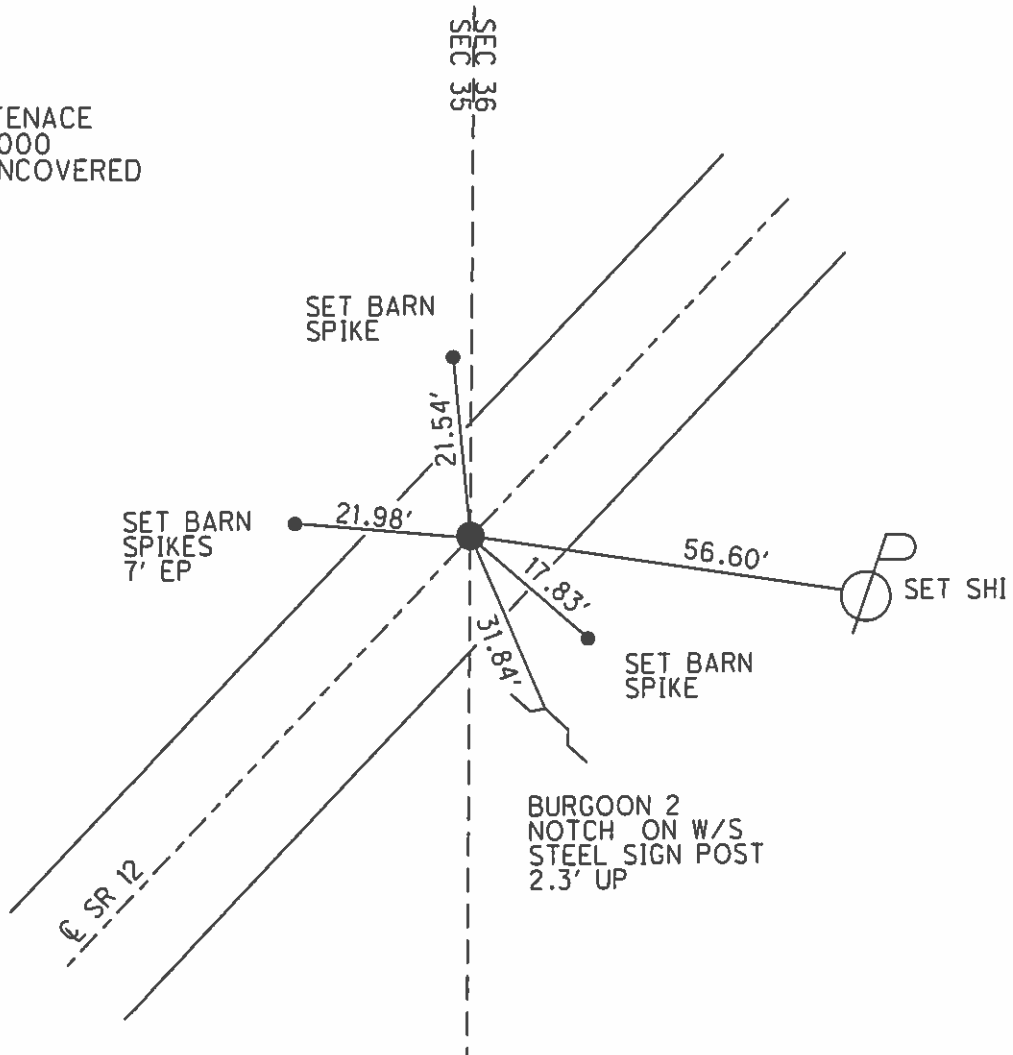
SET PK/WASHER
 11-3-94, CL

PREVENTIVE MAINTENANCE
 MICROSURFACED 2000
 EXISTING POINT UNCOVERED
 DATE 9-12-00, MC

FD PK/WASHER
 GPS, REFB2
 3-26-13

FD PK/WASHER
 GPS, REFB2
 5-27-15

SET MAG/WASHER
 GPS, NEWREFB2
 9-29-16, DCH



O.D.O.T. DISTRICT 2 SURVEY OFFICE

PERSONNEL

REFERENCE NO. 2B

SHEET 8 OF

NOTES LOEHRKE

H.C. CANTERBURY

R.C. Moser

DATE 7-13-94

WEATHER FAIR

TEMP. +86

ROUTE SR.12

COUNTY SANDUSKY

TOWNSHIP Jackson

SECTION 35

T 4 N R 14 E

TYPE MONUMENT R.R. SPIKE

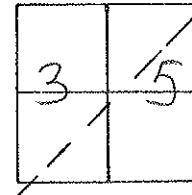
~~ON SURFACE~~ - BELOW 5"

~~LEFT - & PAV'T. - RIGHT~~ Yes

135 TO RT EDGE PAVEMENT

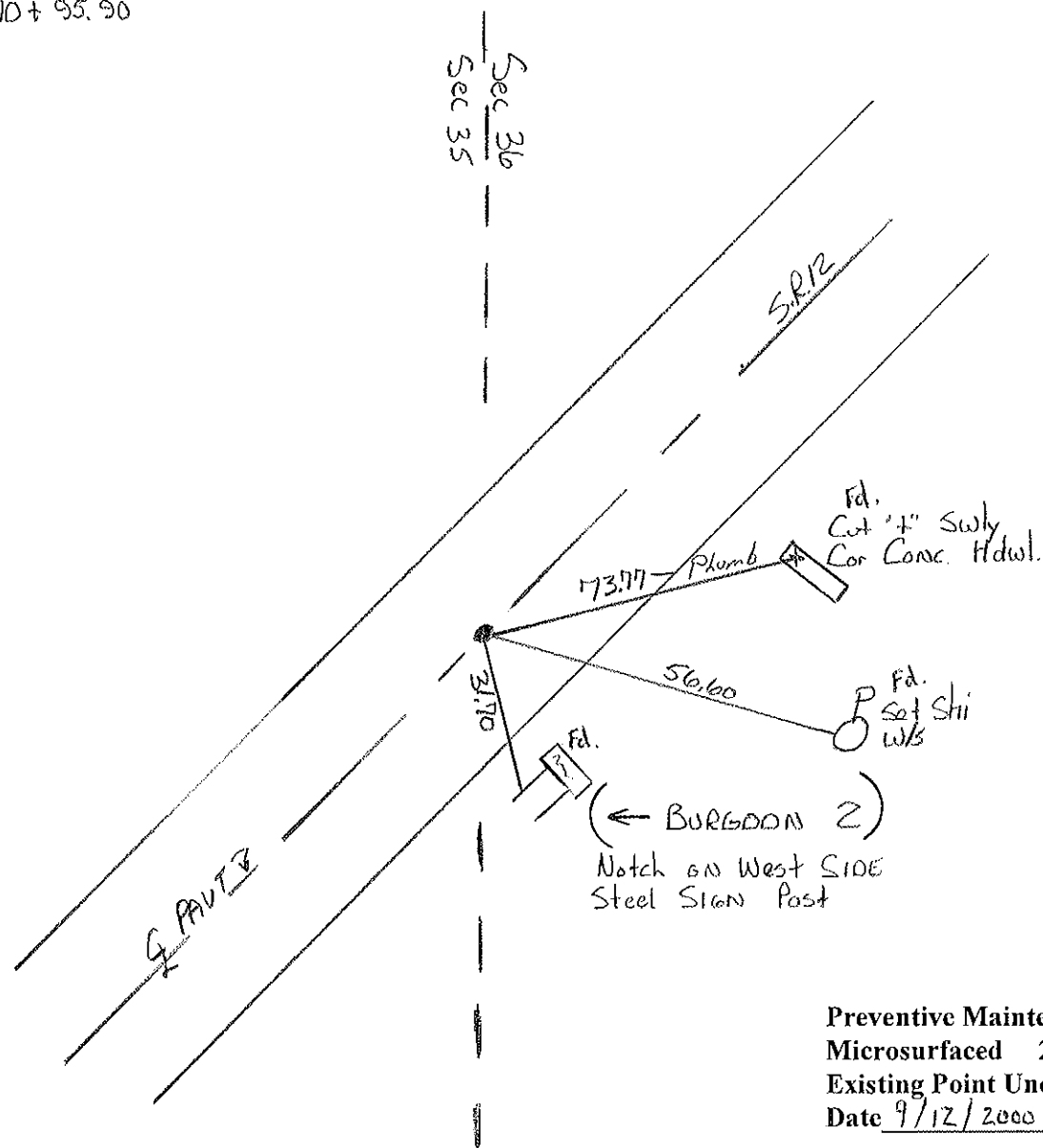
S.L.M. 7110

Set P.K./WASHER
11-3-94 C.L.



Recoed P.O.T.

Sta 70+95.90



Preventive Maintenance
Microsurfaced 2000
Existing Point Uncovered
Date 9/12/2000 M.C.

County Sandusky S.R. #12

Date Drawn 9/14/84

Township Jackson

Weather overcast - rain

Section 35

Temp. 68°

T4N, R4E

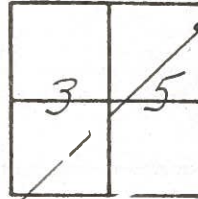
Personnel Cronin

Ripple

Geyman

Barbour

Z B



S.R. #12

Sec. 36
35

P.O.T.

70+95.90

P.K. should be below

surface 4"±

C.B.

71.2

62.89

46.19

76.30

47.7

60. X

surv caps
22" below surface
Tics from Jan. 1968

Q.D.O.T. DISTRICT 2 SURVEY OFFICE

Sht. 8 of 17

State Route #12

County SANDUSKY

Township JACKSON

Section 35

T4N, R14E

Personnel Cronin

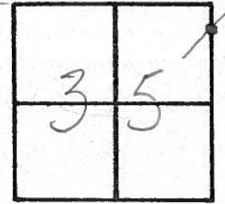
Ripple

Geyman

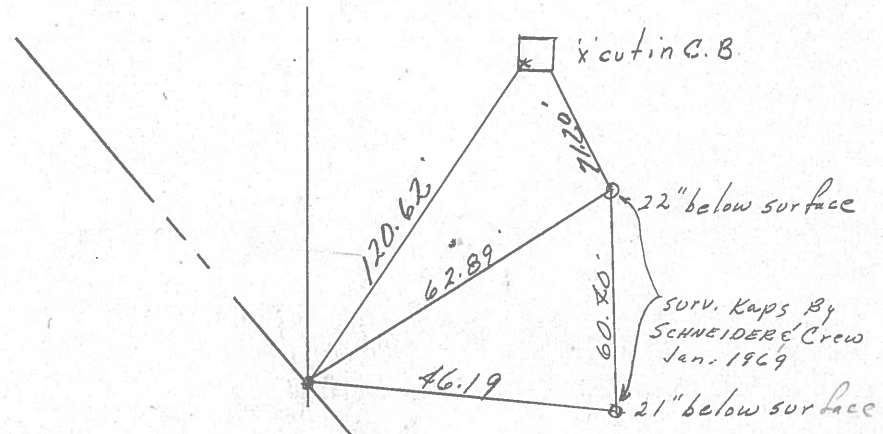
Date 6/12/79

Weather sunny

Temp. 63°



2-B



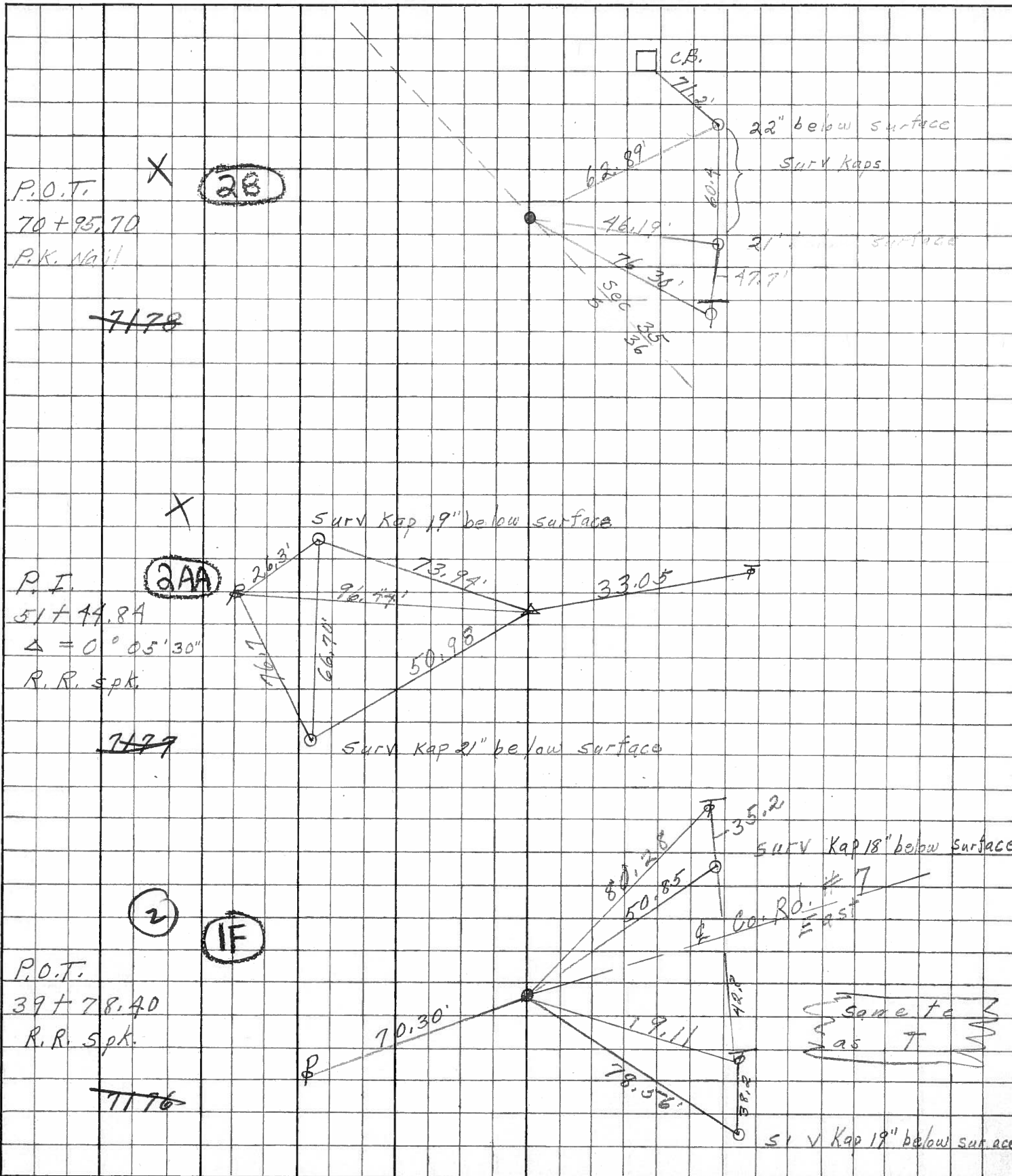
P.O.T.
70+95.70
Set P.K. & Washer.

856.72

PERSONNEL	TITLE	PERSONNEL	TITLE
Schneider			
Mosser			
Pedding			
O. J. Ts			

COUNTY S O 1 DATE Jan. 1968
 S. R. _____ WEATHER _____
 SEC. _____ TEMP. _____

DESCRIPTION Ties f _____ JOB NO. _____
 LEFT _____ CENTER LINE _____ RIGHT _____



PERSONNEL TITLE PERSONNEL TITLE

Schneider

COUNTY Sandusky

DATE 3-10-65

E

S. R. # 12

WEATHER cloudy

Crew

SEC.

TEMP. 70

DESCRIPTION

Ties for Control Points

JOB NO.

