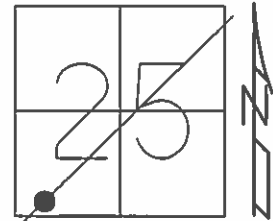


O.D.O.T. DISTRICT 2 SURVEY OFFICE (USE ONLY)

PERSONNEL	REFERENCE NO.	3 AA	SHEET	12	OF	25
NOTES	O'DONNELL	DATE	5-27-15	ROUTE	SR	12
H.C.	LEU	WEATHER	CLEAR	COUNTY	SANDUSKY	
R.C.	RHOADES	TEMP.	75°F	TOWNSHIP	JACKSON	
				SECTION	25	
				T	4	N
				R	14	E

TYPE MONUMENT PK/WASHER
~~ON SURFACE~~ - BELOW 0.25'
 LEFT - ☉ PAV'T - RIGHT ON
13.5' TO LT EDGE PAVEMENT
 S.L.M. 86+70.16



Grid: Northing: 585124.8988 Easting: 1775128.203

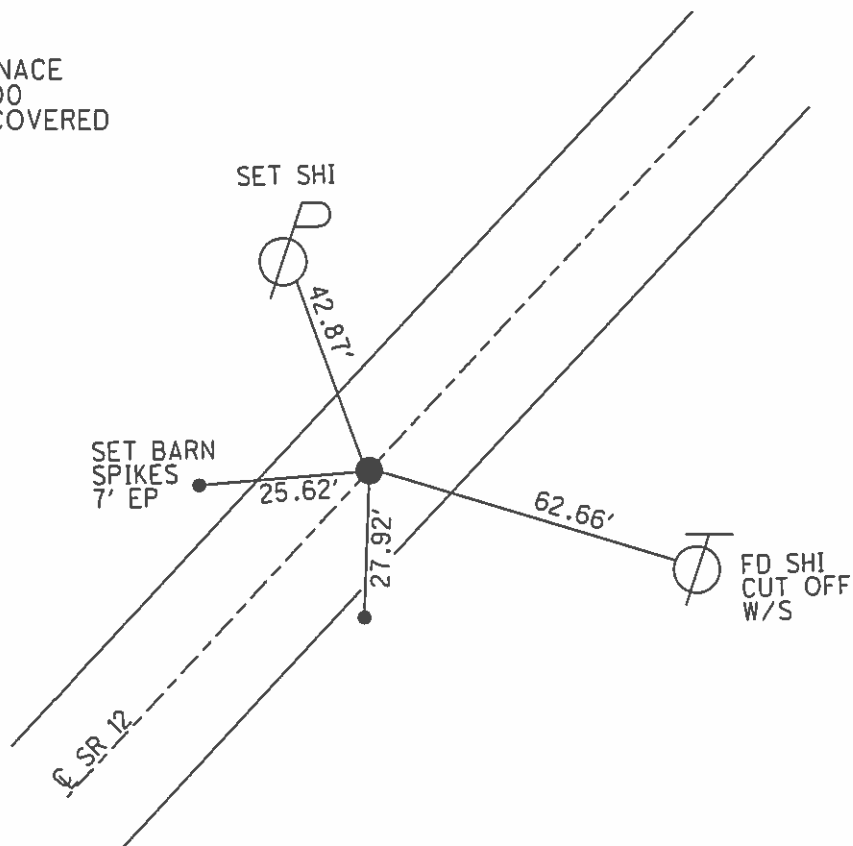
RECORD: T.S.
 86+70.26
 PK/WASHER
 RR. SPIKE

P.K./WASHER
 11-3-94, CL

PREVENTIVE MAINTENANCE
 MICROSURFACED 2000
 EXISTING POINT UNCOVERED
 DATE 9-12-00, MC

FD PK/WASHER
 GPS, REFAA3
 3-26-13

FD PK/WASHER
 GPS, REFAA3
 5-27-15



O.D.O.T. DISTRICT 2 SURVEY OFFICE

PERSONNEL _____

REFERENCE NO. _____

SHEET 10 OF _____

NOTES LOEHRKE

H.C. CAMERBURY

R.C. MOSEK

DATE 7-3-94

WEATHER Fair

TEMP. 78.6°F

ROUTE S.R. 12

COUNTY SENECA

TOWNSHIP JACKSON

SECTION 25

T4 N R14 E

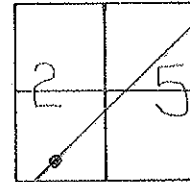
TYPE MONUMENT PK. / WASHER Reset 11-3-94 CL

ON SURFACE - ~~BELOW~~ Yes

LEFT - Q PAV'T. - RIGHT Q

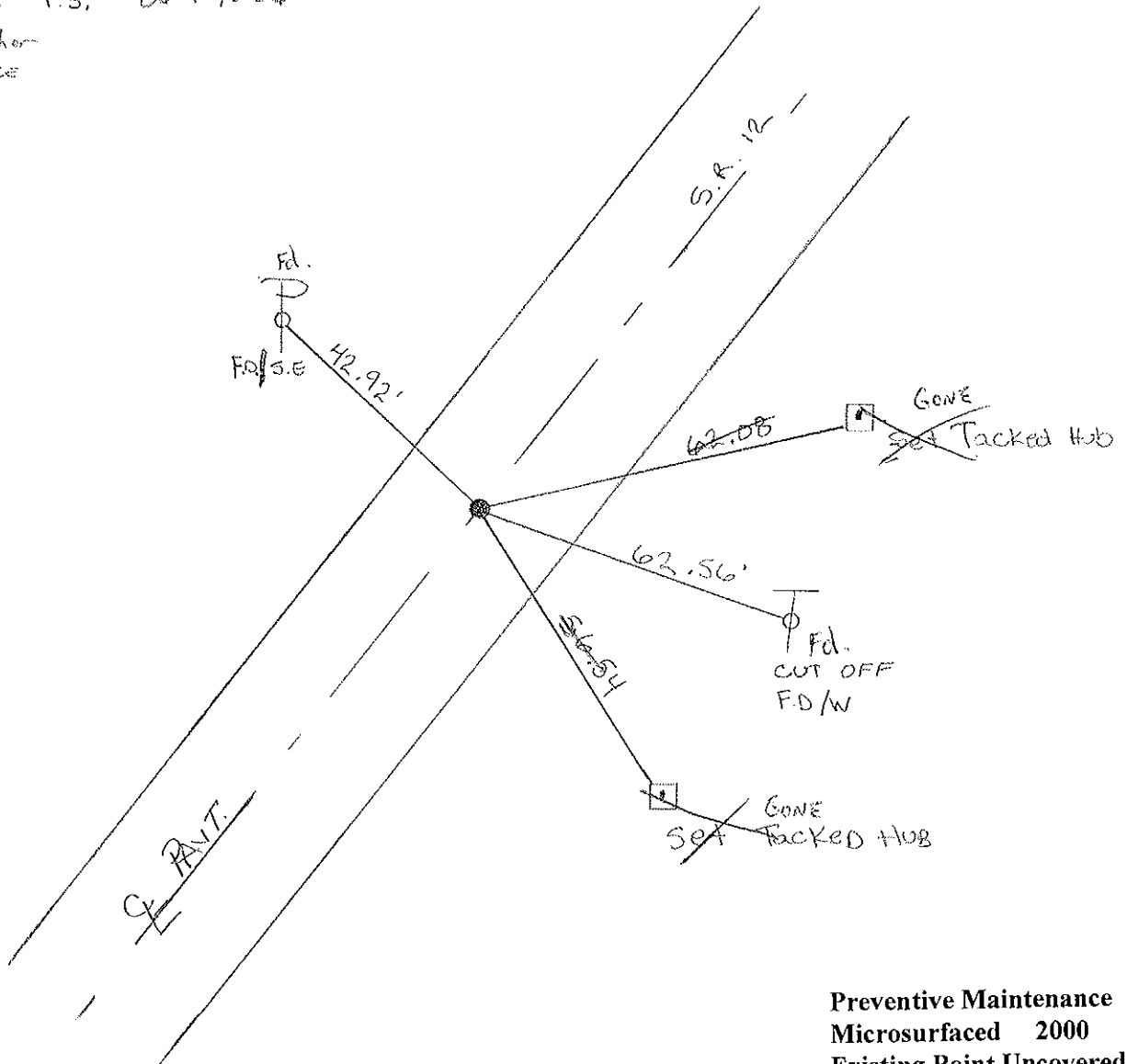
13.5 TO Lt EDGE PAVEMENT

S.L.M. 86+85



RECORD T.S. 86+70.26

PK/washer
RR spike



Preventive Maintenance
Microsurfaced 2000
Existing Point Uncovered
Date 9/12/2000 M.C.

County Sandusky S.R. #12

Township Jackson

Section 25

T4N, R14E

Personnel Cronin

Ripple

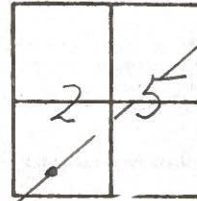
Geyman

Barbour

Date 8/27/84 Drawn 9/17/84

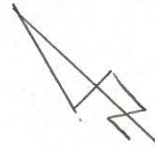
Weather sunny

Temp. 70°



3AA

S.S.R. #12B



T.S.

86 + 70.26

set P.K. & washer

at top R.R. spike

46.94'

62.51'

cut off

O.D.O.T. DISTRICT 2 SURVEY OFFICE

Sht. 10 of 17

State Route #12

County SANDUSKY

Township JACKSON

Section 25

T4N, R4E

Personnel Cronin

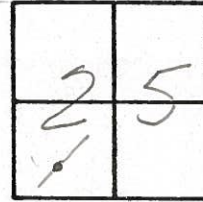
Ripple

Geyman

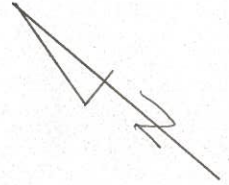
Date 6/12/79

Weather sunny

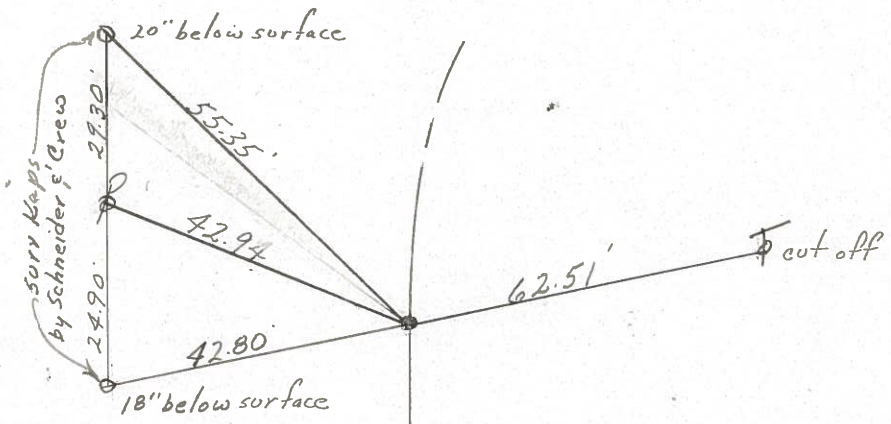
Temp. 65°



3AA



T.S.
 86 + 70.26
 Ed. R.R. spike at surface

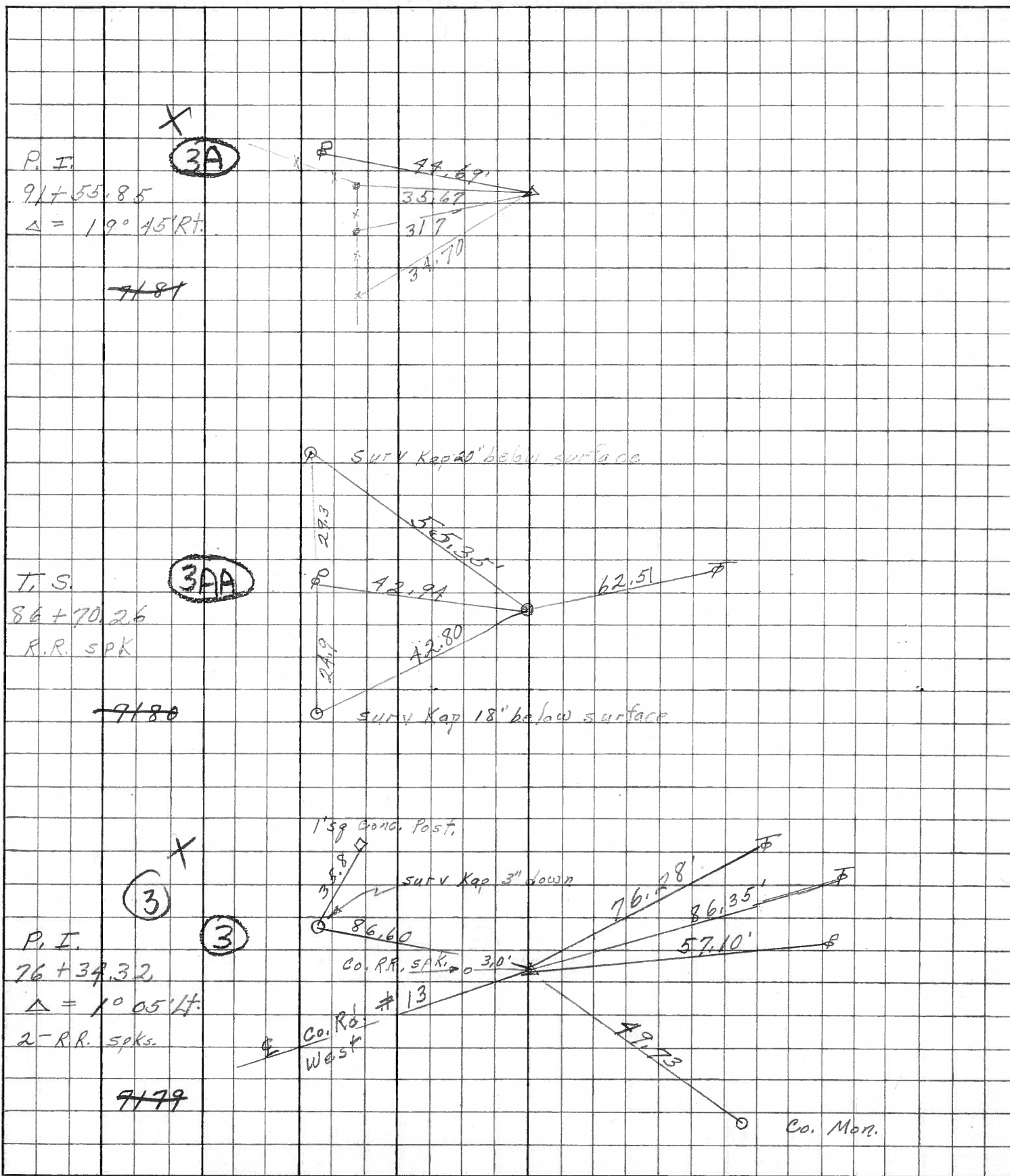


E.S.R. #127

PERSONNEL	TITLE	PERSONNEL	TITLE
Schneider			
Mosser			
Redding			
Potts J			

COUNTY Sandusky DATE Jan. 1968
 S. R. 12 WEATHER _____
 SEC. 0.00 TEMP. _____

DESCRIPTION Ties fo Points JOB NO. _____



PERSONNEL TITLE PERSONNEL TITLE

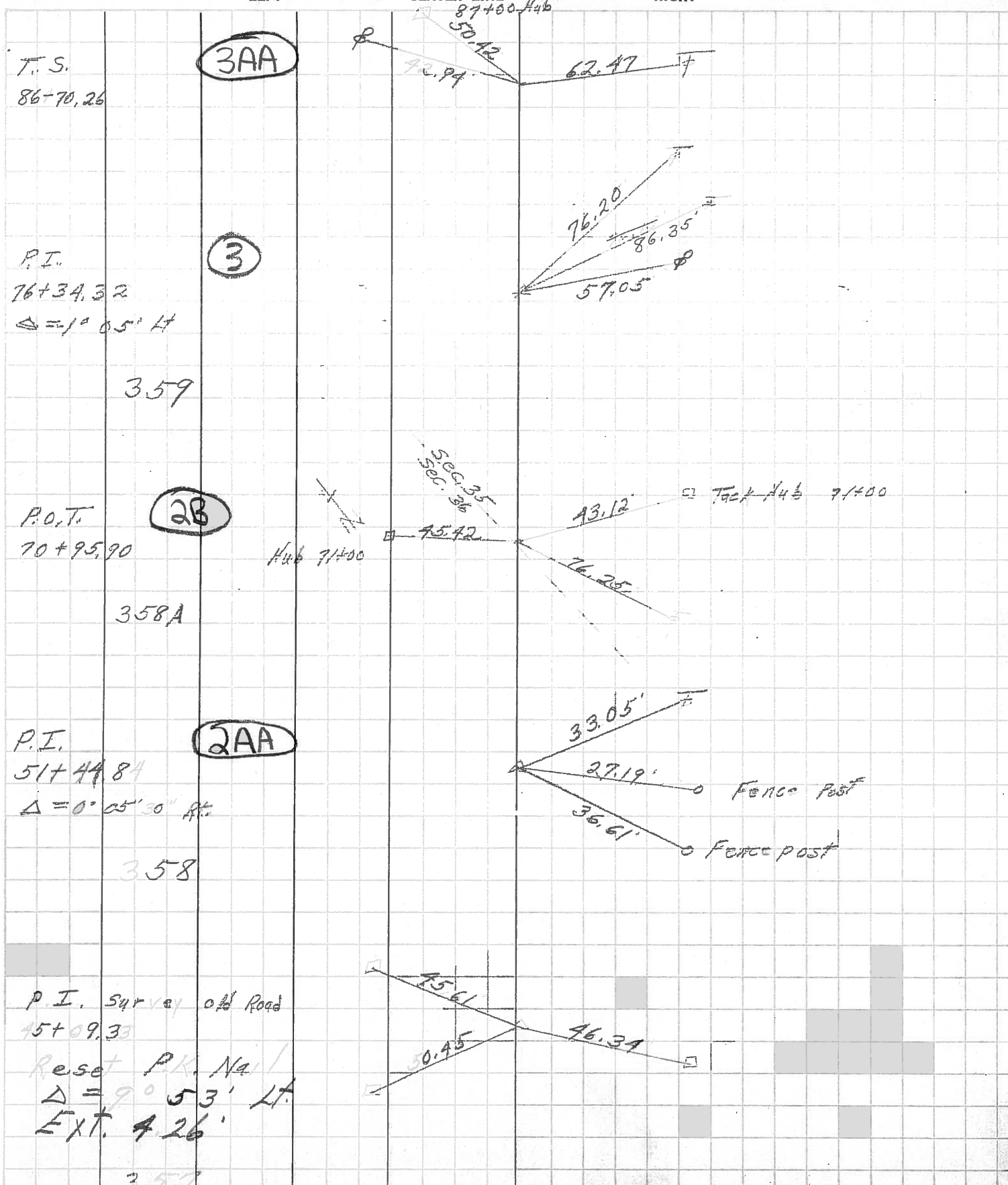
Schneider
E
Crew

COUNTY Sandusky DATE 3-10-15

S. R. # 12 WEATHER cloudy

SEC. TEMP. 70

DESCRIPTION Ties for Control Points LEFT CENTER LINE RIGHT JOB NO.



357