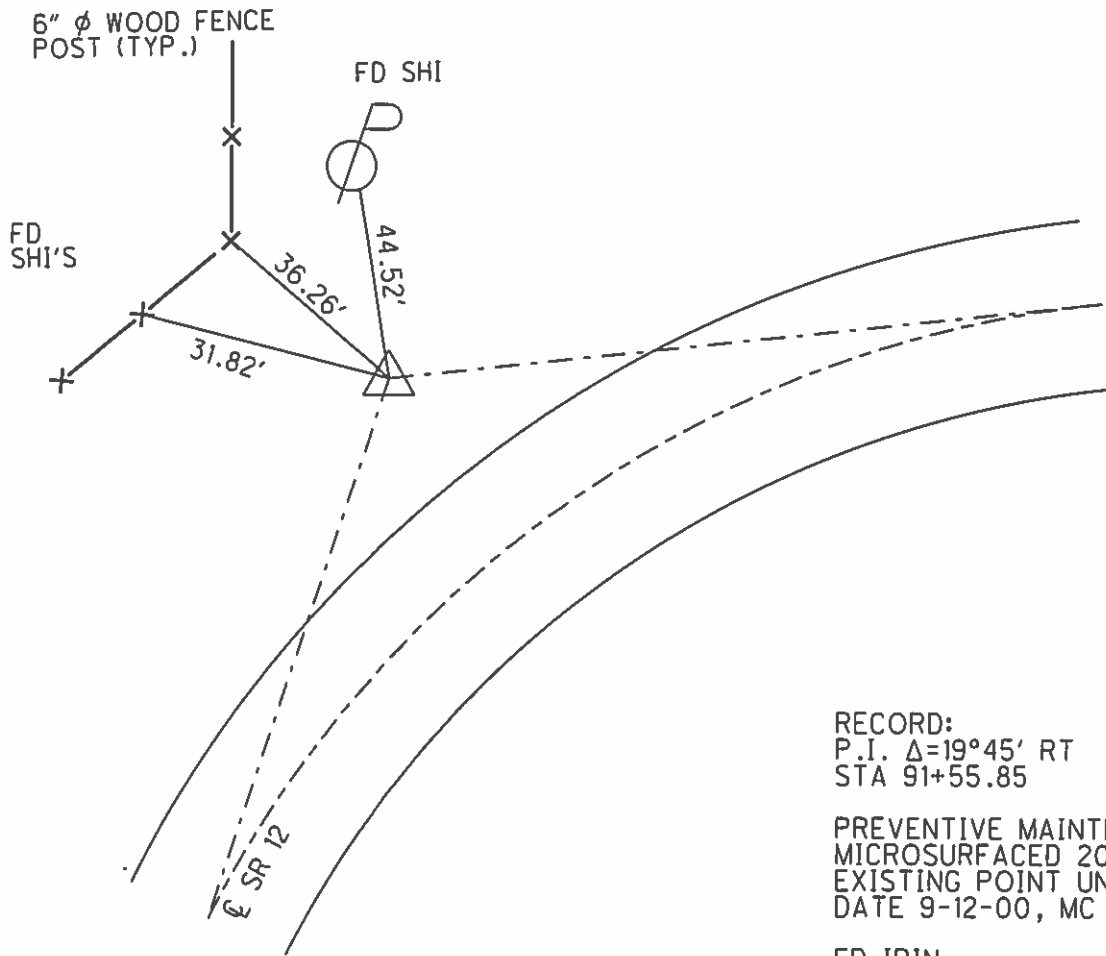
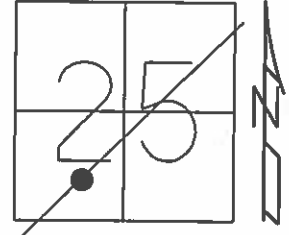


O.D.O.T. DISTRICT 2 SURVEY OFFICE (USE ONLY)

PERSONNEL \_\_\_\_\_ REFERENCE NO. 3 A SHEET 12 OF 24  
 NOTES LEU DATE 05-07-15 ROUTE SR 12  
 H.C. O'DONNELL WEATHER SUNNY COUNTY SANDUSKY  
 R.C. LEU TEMP. 83°F TOWNSHIP JACKSON  
 \_\_\_\_\_ SECTION 25  
 \_\_\_\_\_ T 4 N R 14 E

TYPE MONUMENT 1" IPIN  
~~ON SURFACE~~ - BELOW 0.4'  
 LEFT - ☉ PAV'T - ~~RIGHT~~ 29.5'  
16.5' TO LT EDGE PAVEMENT  
 S.L.M. 91+55.35  
 Grid: Northing: 585498.3444 Easting: 1775437.845



RECORD:  
 P.I.  $\Delta=19^{\circ}45'$  RT  
 STA 91+55.85  
 PREVENTIVE MAINTENACE  
 MICROSURFACED 2000  
 EXISTING POINT UNCOVERED  
 DATE 9-12-00, MC  
 FD IPIN  
 GPS, REFA3  
 3-26-13  
 FD IPIN  
 9-29-16

O.D.O.T. DISTRICT 2 SURVEY OFFICE

PERSONNEL \_\_\_\_\_

REFERENCE NO. 3-A

SHEET 11 OF \_\_\_\_\_

NOTES LOHRKE

H.C. CAUTERBURY

R.C. MOSEK

DATE 7-15-94

WEATHER FAIR

TEMP. +80°F

ROUTE S.R. 12

COUNTY SANDUSKY

TOWNSHIP JACKSON

SECTION 25

T4 N R 14 E

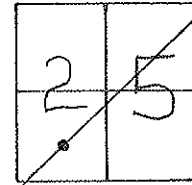
TYPE MONUMENT IRON ROD

ON SURFACE - ~~BELOW~~

LEFT - ~~0~~ PAVT. - RIGHT 29.5'

16.5 TO LT. OF EDGE PAVEMENT

S.L.M. 9/767

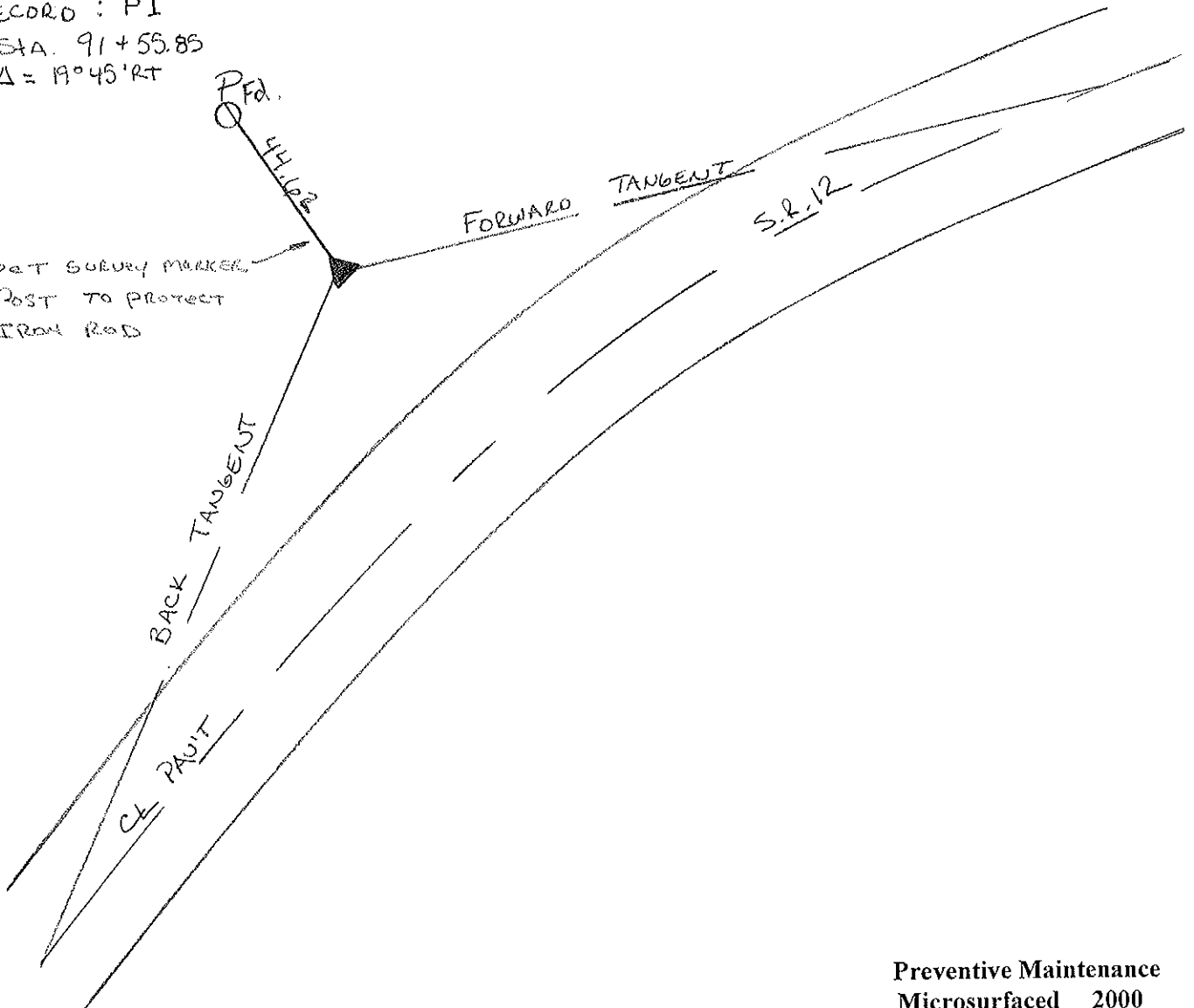


RECORD : PI

STA. 91+55.85

$\Delta = 19^{\circ}45'RT$

Set SURVEY MARKER  
POST TO PROTECT  
IRON ROD



Preventive Maintenance  
Microsurfaced 2000  
Existing Point Uncovered  
Date POINT UNDISTURBED

ODOT. DISTRICT 2 SURVEY OFFICE

SHEET 12 OF 19

County Sandusky S.R. #12

Date 8/27/84 Drawn 9/17/84

Township Jackson

Weather sunny

Section 25

Temp. 70°

T&N, R1&E

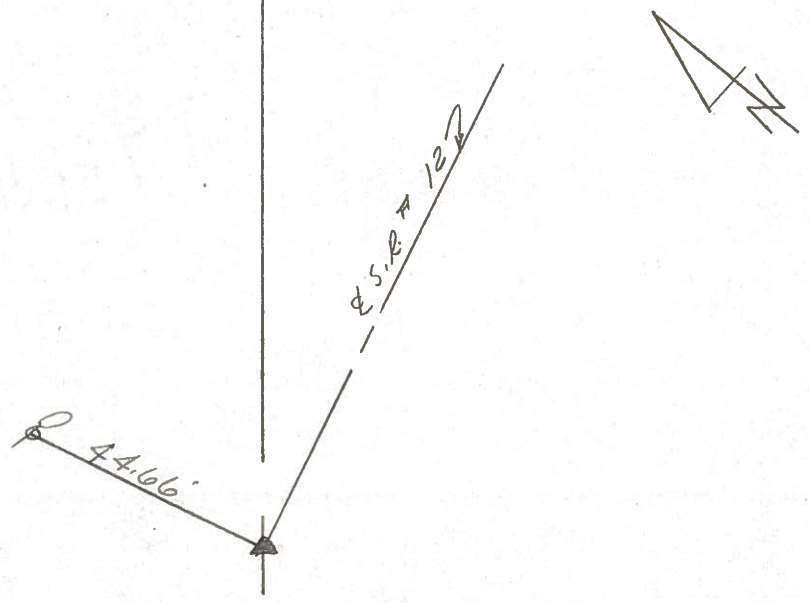
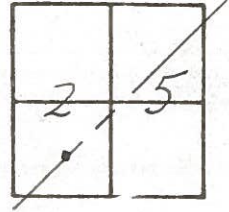
Personnel Cronin

Ripple

Geyman

Barbour

3A



P.I. - Δ = 19° 45' Rt.  
91455.85  
set 1" x 19" re-rod  
14' ± N. of N1/4 E.P.

E. S. R. #12

OD.O.T. DISTRICT 2 SURVEY OFFICE

Sht. 11 of 17

State Route #125

County SANDUSKY

Township JACKSON

Section 25

T4N, R4E

Personnel Cronin

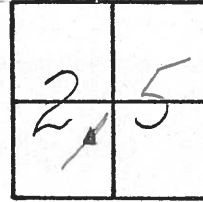
Ripple

Geuman

Date 6/12/79

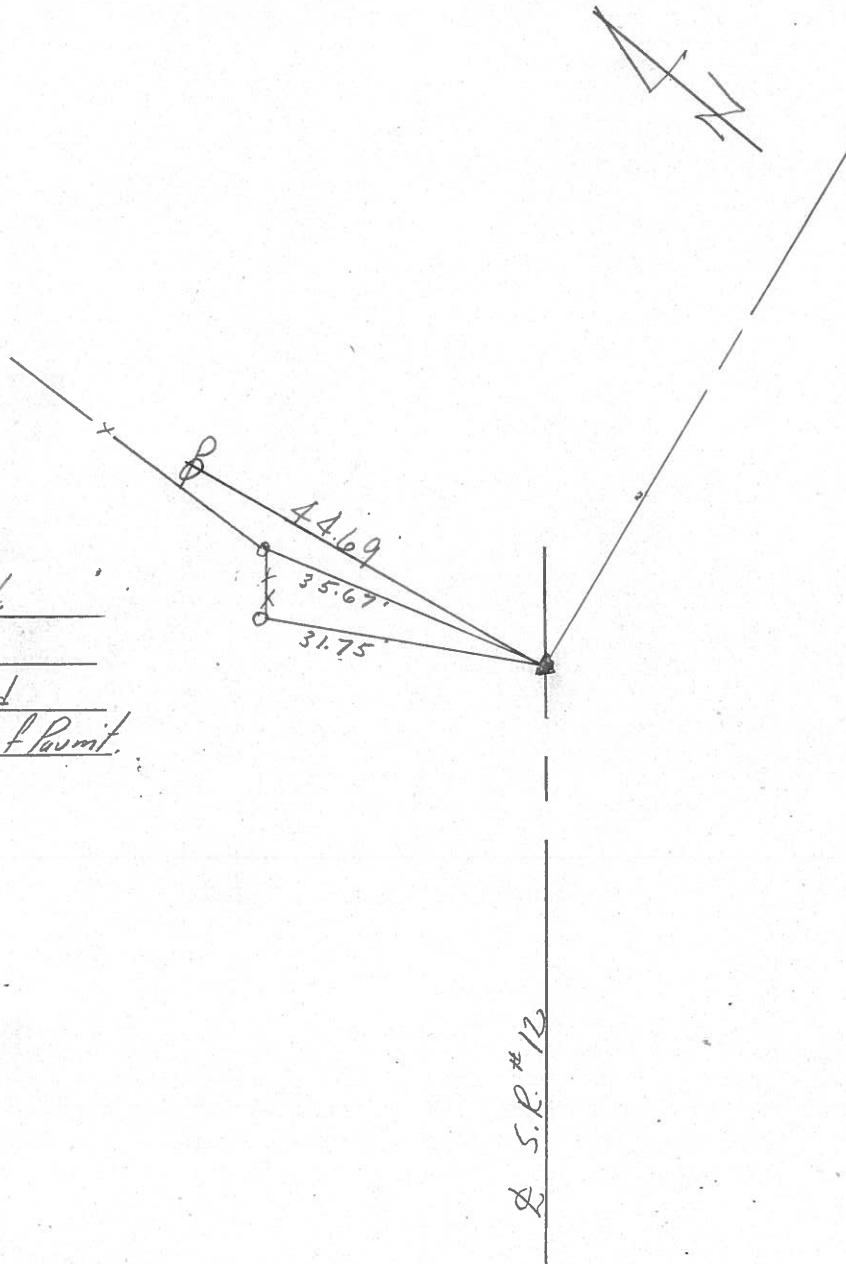
Weather sunny - windy

Temp. 69°



3-A

P.I.  $\Delta = 19^{\circ}45'$  Lt.  
91+55.85  
Set 1" x 19" re-rod  
17.4' Lt. of Lt. Edge of Pavmt.

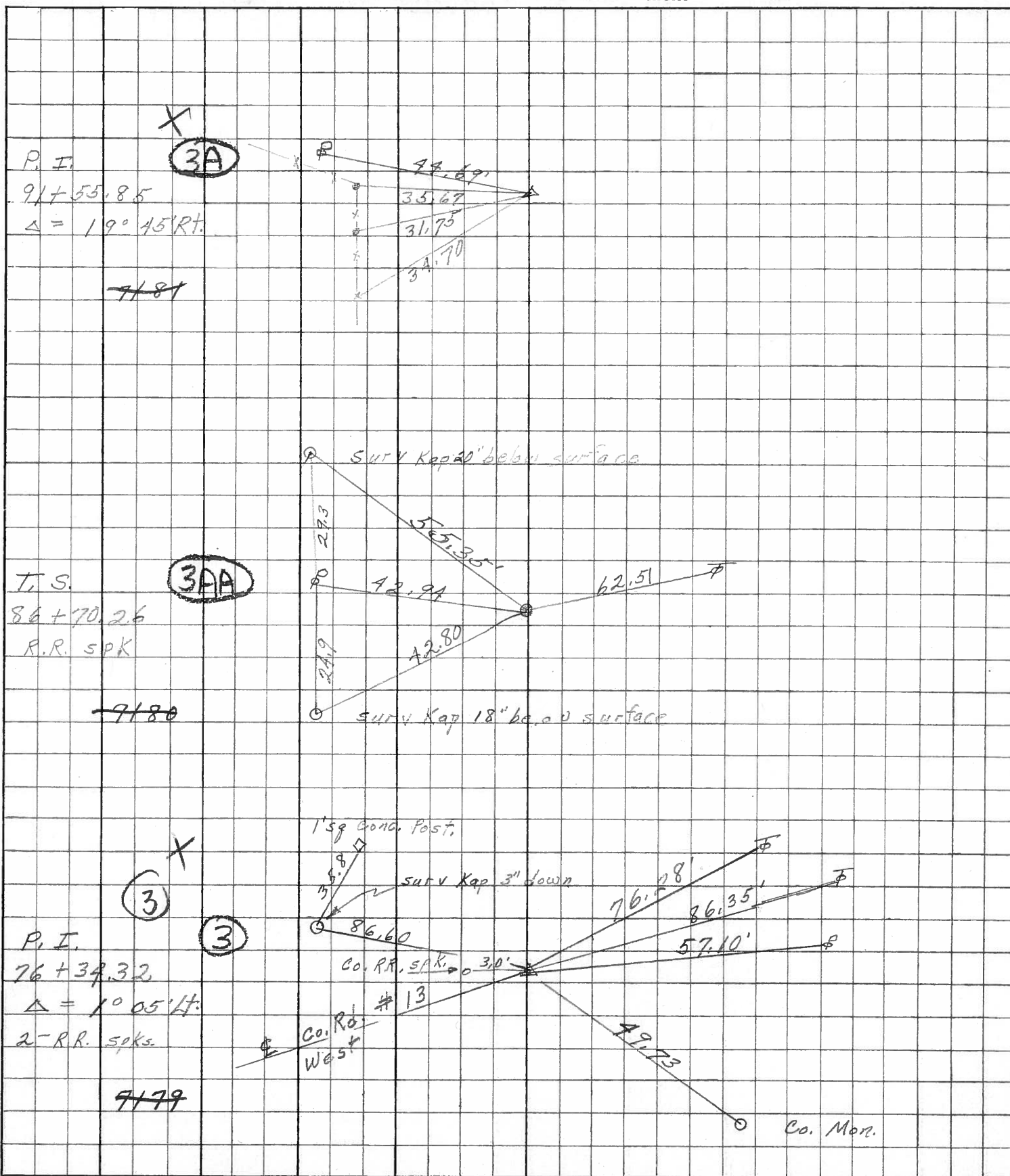


S.R. #125

PERSONNEL TITLE PERSONNEL TITLE  
Schneider \_\_\_\_\_  
Mosser \_\_\_\_\_  
Redding \_\_\_\_\_  
Potts \_\_\_\_\_

COUNTY Sandusky DATE Jan. 1968  
 S. R. 12 WEATHER \_\_\_\_\_  
 SEC. 0.00 TEMP. \_\_\_\_\_

DESCRIPTION Ties fo Points JOB NO. \_\_\_\_\_



PERSONNEL	TITLE	PERSONNEL	TITLE	COUNTY	DATE
Schneider				Sandusky	8-10-65
E				S. R. #12	WEATHER Cloudy
Crew				SEC. 0.00-1.02	TEMP. 70

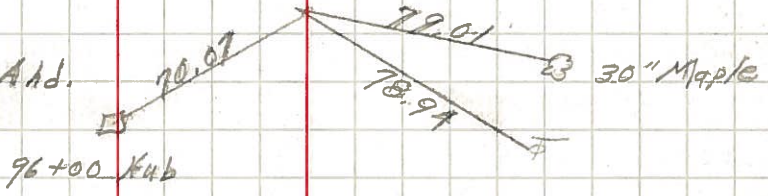
DESCRIPTION Ties for Control Points LEFT CENTER LINE RIGHT JOB NO.

S.T.

3B

96+31.55 Const. BK =

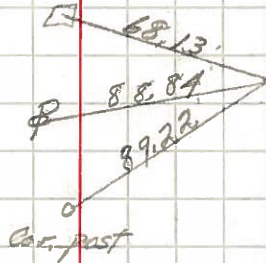
96+41.44 Survey & Const. Add.



C.S.

92+34.55

92+00 Hub

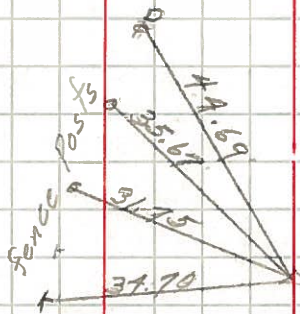


3A

P.I.

91+55.85

Δ = 19° 45' ft



360

S.C.

90+70.26

Tapped Hubs

