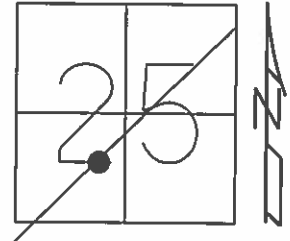


O.D.O.T. DISTRICT 2 SURVEY OFFICE (USE ONLY)

PERSONNEL \_\_\_\_\_ REFERENCE NO. 3 B SHEET 13 OF 24  
 NOTES LEU DATE 05-07-15 ROUTE SR 12  
 H.C. O'DONNELL WEATHER SUNNY COUNTY SANDUSKY  
 R.C. LEU TEMP. 83°F TOWNSHIP JACKSON  
 SECTION 25  
 T 4 N R 14 E

TYPE MONUMENT PK/WASHER  
 ON SURFACE - ~~BELOW~~ ON  
 LEFT - ☉ PAV'T - RIGHT ON  
13.8' TO RT EDGE PAVEMENT  
 S.L.M. 96+41.46



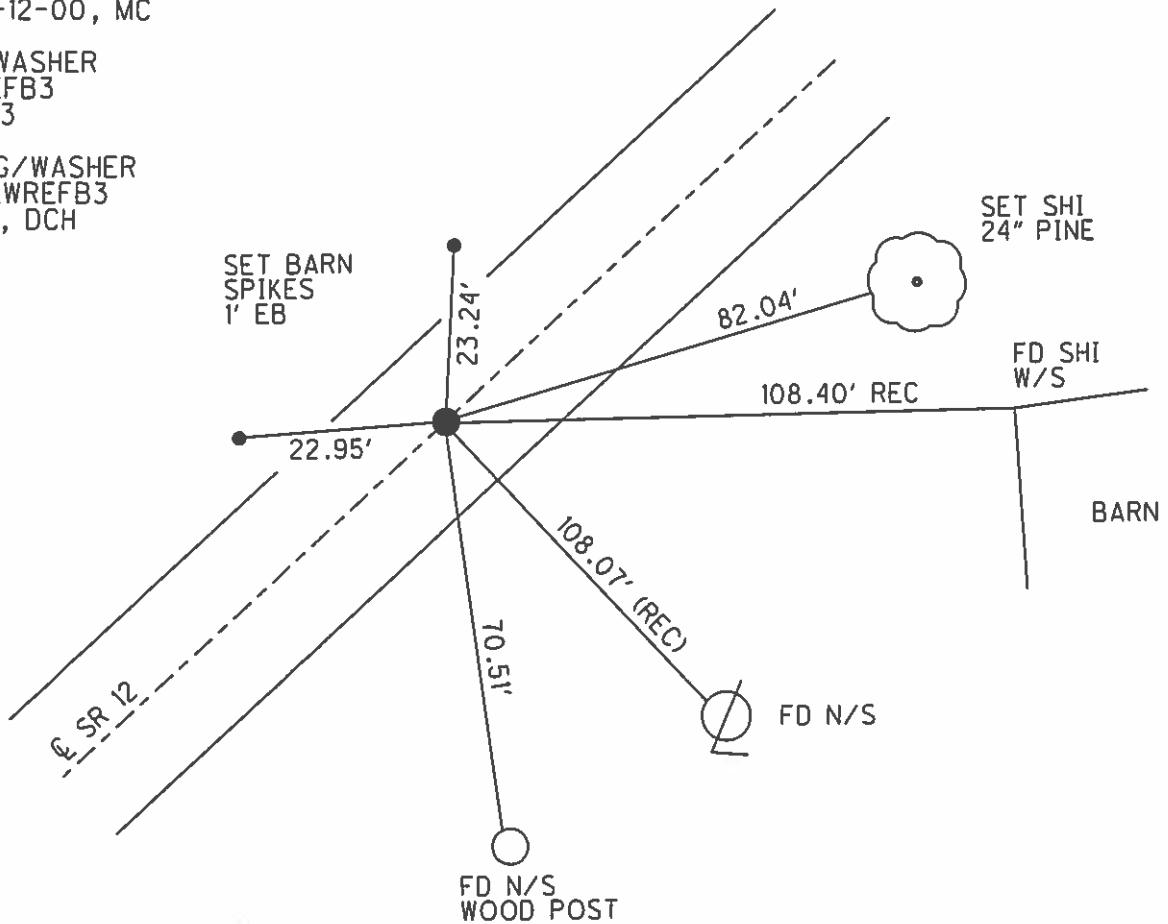
Grid: Northing: 585745.1027 Easting: 1775856.702

RECORD: S.T.  
 STA. 96+34.55 ☉ CONST.  
 BK. = 96+41.44 ☉ SUR & CONST. AHD.  
 RR. SPIKE BELOW

PREVENTIVE MAINTENANCE  
 MICROSURFACED 2000  
 EXISTING POINT UNCOVERED  
 DATE 9-12-00, MC

FD PK/WASHER  
 GPS, REFB3  
 03-26-13

SET MAG/WASHER  
 GPS, NEWREFB3  
 9-29-16, DCH



# O.D.O.T. DISTRICT 2 SURVEY OFFICE

PERSONNEL \_\_\_\_\_

REFERENCE NO. 3-B

SHEET 12 OF \_\_\_\_\_

NOTES LOEHRKE

H.C. CANTERBURY

DATE 7-15-94

ROUTE S.R. 12

R.C. MOSER

WEATHER NICE

COUNTY SAUNDUSKY

TEMP. +60

TOWNSHIP JACKSON

SECTION 25

T4 N R14 E

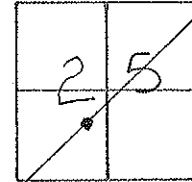
TYPE MONUMENT P.K. WASHER <sup>Reset</sup> 11-3-94 C.L.

ON SURFACE - ~~BELOW~~ Yes

~~LEFT~~ - Q PAV'T. - RIGHT Yes

13.8' TORT. EDGE PAVEMENT

S.L.M. 96+50

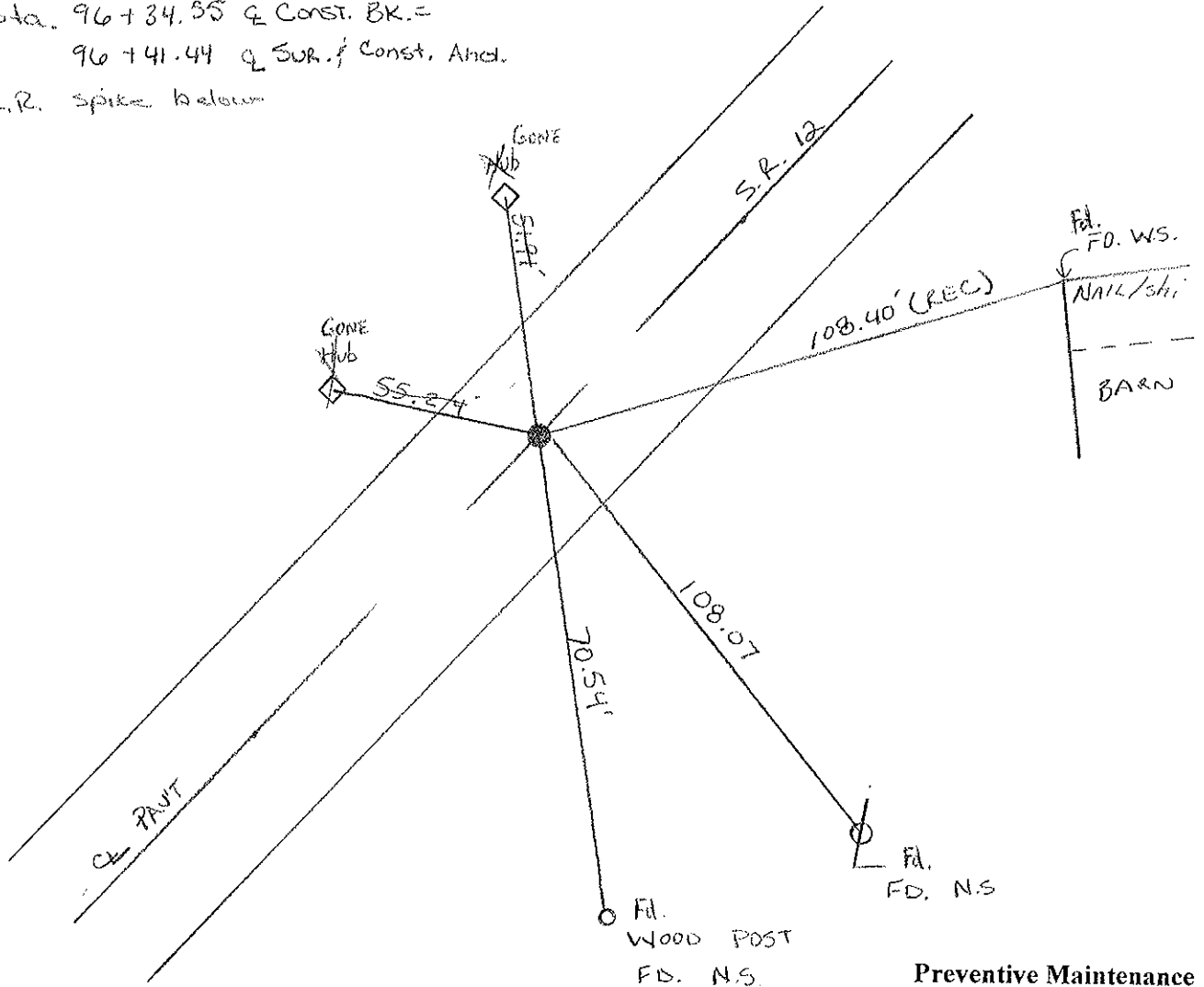


RECORD : S.T.

Sta. 96+34.55 Q Const. BK. =

96+41.44 Q SUR. f Const. Ancl.

R.R. spike below



Preventive Maintenance  
 Microsurfaced 2000  
 Existing Point Uncovered  
 Date 9/12/2000 M.C.

County Sandusky S.R. #12

Township Jackson

Section 25

T4N, R4E

Personnel Cronin

Ripple

Geyman

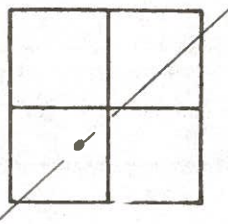
Barbour

3B

Date 8/27/84 Drawn 9/17/84

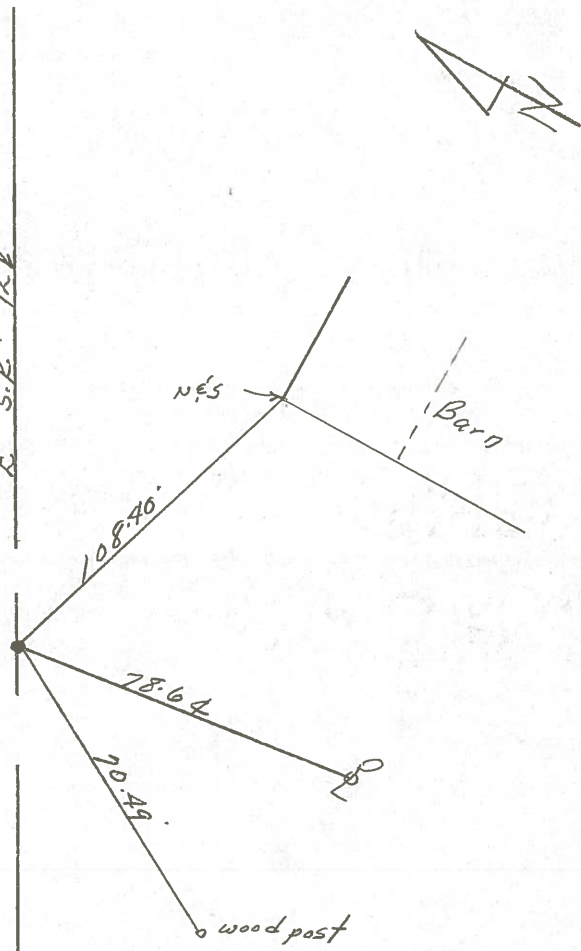
Weather sunny

Temp. 74°



S.T.  
96+34.55 Const Bk =  
96+41.44 Sur. & Const. Ahd.  
set P.K. & washer at top  
R.R. spike

S.R. # 12



O.D.O.T. DISTRICT 2 SURVEY OFFICE

Sht. 12 of 17

State Route #12

County SANDUSKY

Township JACKSON

Section 25

T4N, R4E

Personnel Cronin

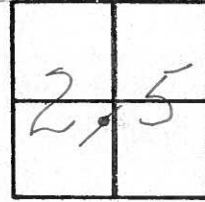
Ripple

Geyman

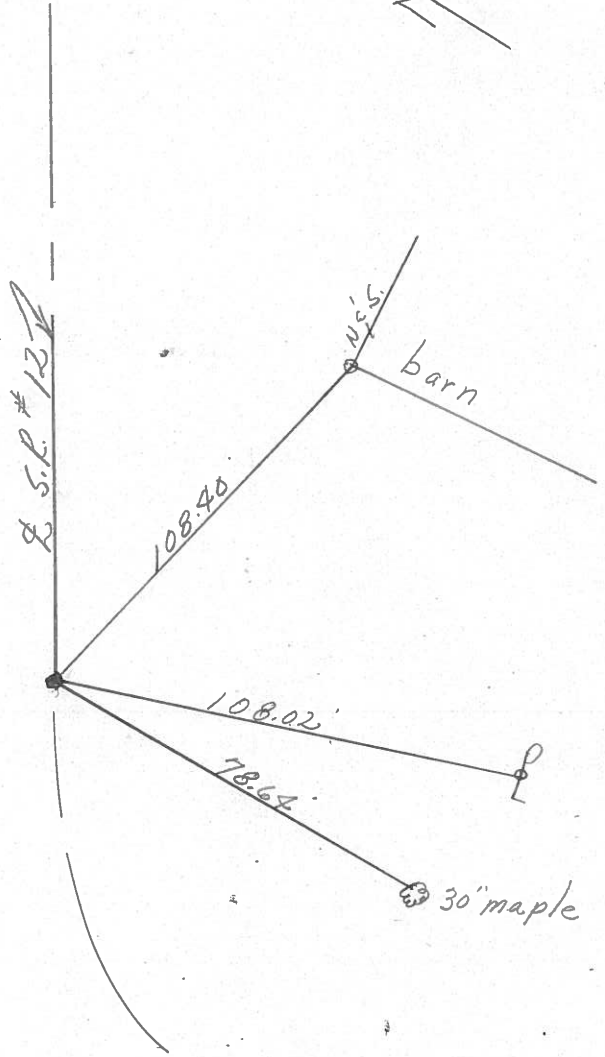
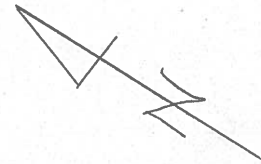
Date 6/12/79

Weather sunny-windy

Temp. 69°

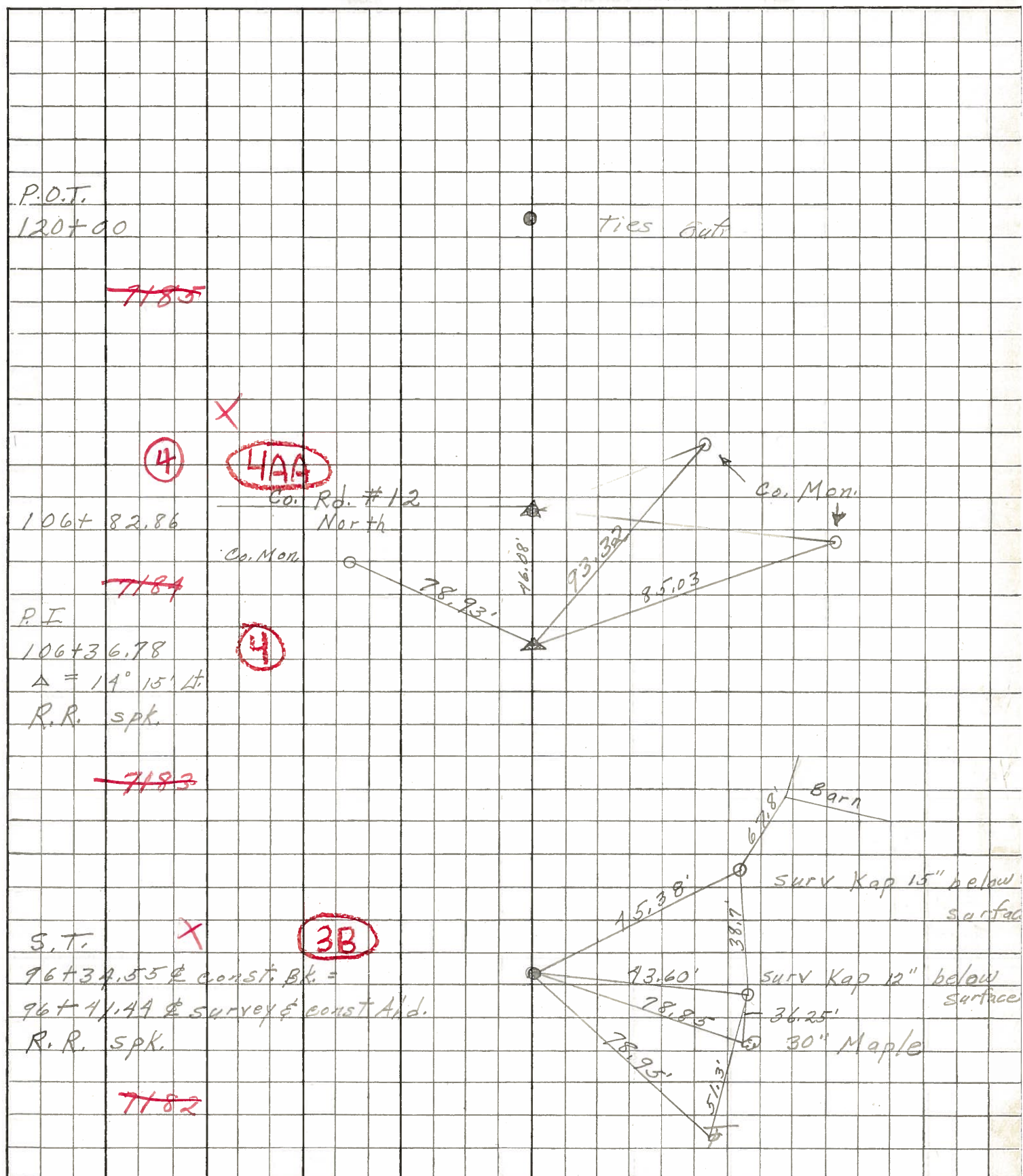


3-B



S.T.  
76+34.55 ± Const Bk =  
76+41.44 ± Survey and  
Const. Ahd.  
Fd. R.R. spike on surface

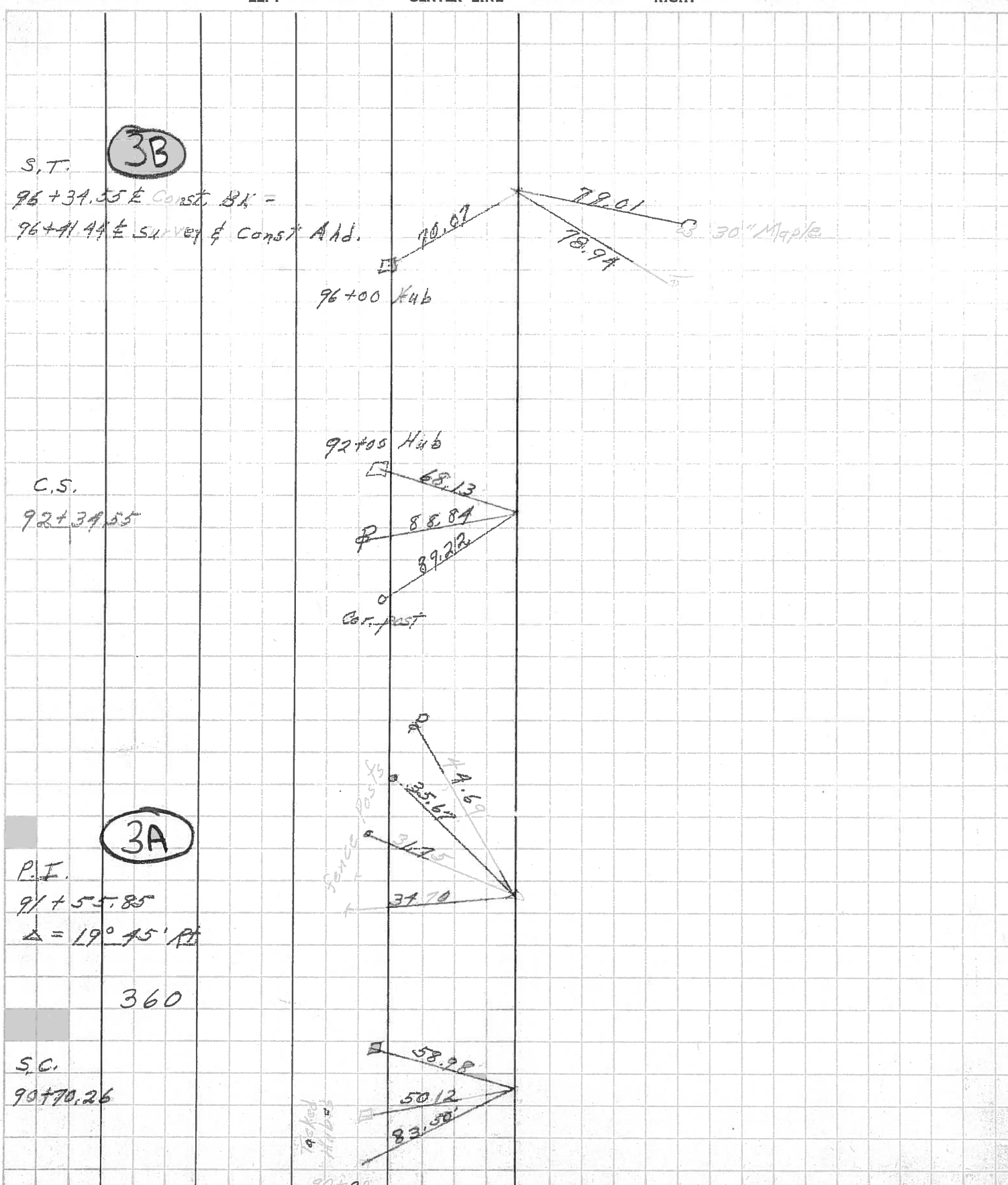
PERSONNEL	TITLE	PERSONNEL	TITLE	COUNTY	DATE
Schneider		Potts		Sandusky	Jan. 1968
Mosser				S. R.	12
Barbour				WEATHER	
Redding				SEC.	0.00 -1.02
DESCRIPTION				TEMP.	
Ties for Control Points				JOB NO.	
LEFT		CENTER LINE		RIGHT	





PERSONNEL	TITLE	PERSONNEL	TITLE	COUNTY	DATE	WEATHER	TEMP.
Schneider				Sandusky	9-10-65	Cloudy	70
				S. R. #12			
				SEC. 0.00 - 1.02			

DESCRIPTION Ties for Control Points JOB NO. \_\_\_\_\_



**3B**

S.T.  
 96+34.55 E Const. BK =  
 96+41.44 E Survey & Const. Add.

**3A**

P.I.  
 91+55.85  
 $\Delta = 19^\circ 45' 12''$

360

S.C.  
 90+70.26

Sanded strips