

O.D.O.T. DISTRICT 2 SURVEY OFFICE (USE ONLY)

PERSONNEL _____ REFERENCE NO. 4 SHEET 14 OF 24

NOTES RHOADES DATE 5-7-15 ROUTE SR 12
 H.C. O'DONNELL WEATHER SUNNY COUNTY SANDUSKY
 R.C. LEU TEMP. 85°F TOWNSHIP JACKSON
 _____ SECTION 25
 _____ T 4 N R 15 E

TYPE MONUMENT RR. SPIKE

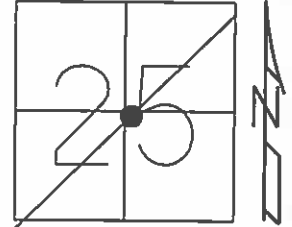
~~ON SURFACE~~ - BELOW 6"

~~LEFT~~ - CL PAV'T - RIGHT 29.6'

11' TO RT EDGE PAVEMENT

S.L.M. 106+34.92

Grid: Northing: 586249.834 Easting: 1776712.407



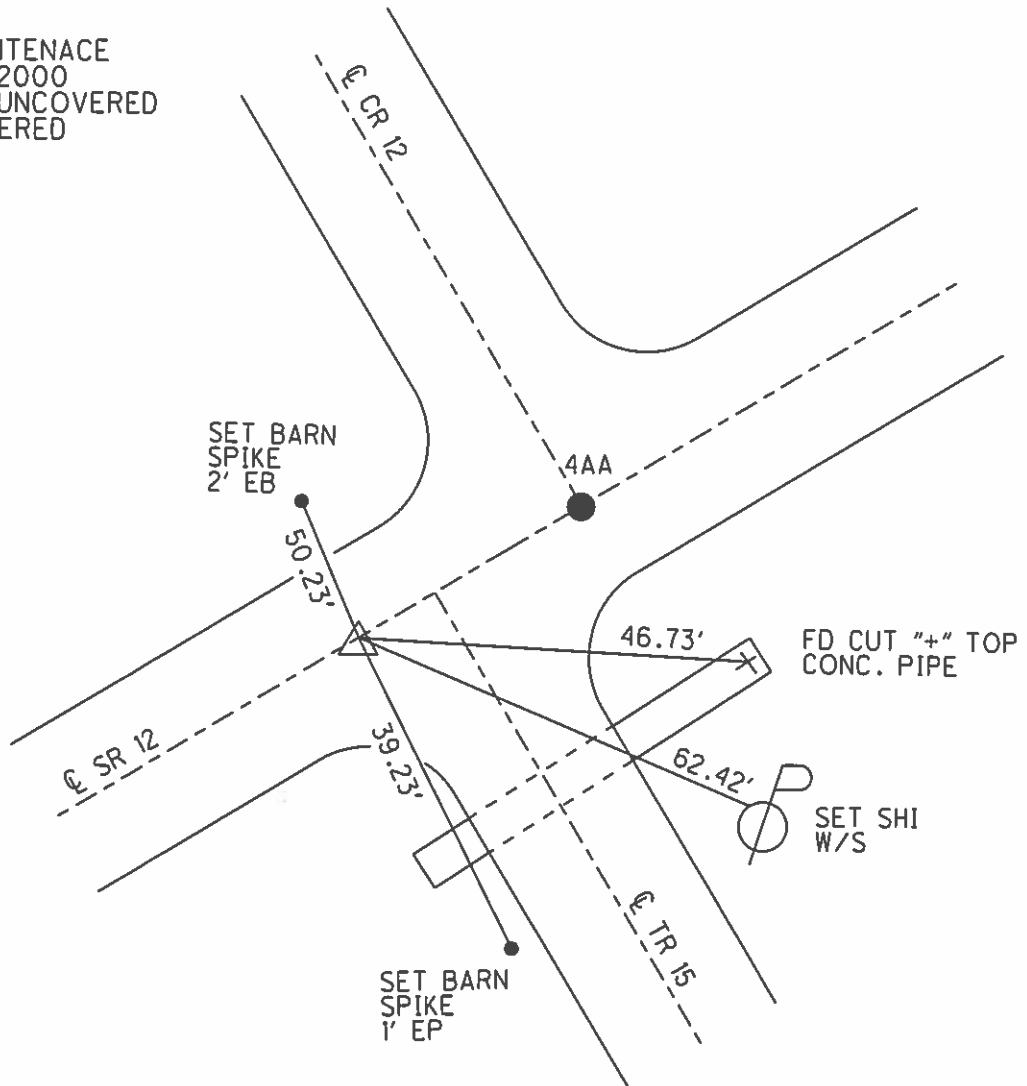
RECORD:
 P.I. $\Delta=14^{\circ}15'$ LT
 STA. 106+36.78

DIST. 4-4AA = 55.91'

PREVENTIVE MAINTENANCE
 MICROSURFACED 2000
 EXISTING POINT UNCOVERED
 DATE - NOT COVERED

FD RSPK
 0.5' BELOW
 3' N OF S. EP
 OF TR 15
 GPS, REF 4
 5-16-13, SDC

NOT COVERED
 9-29-16



O.D.O.T. DISTRICT 2 SURVEY OFFICE

PERSONNEL _____

REFERENCE NO. 4

SHEET 13 OF _____

NOTES Chaney

H.C. GEYMAN

R.C. BARBOUR

DATE 7-15-94

WEATHER FAIR

TEMP. _____

ROUTE SR12

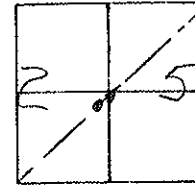
COUNTY SANDUSKY

TOWNSHIP JACKSON

SECTION 25

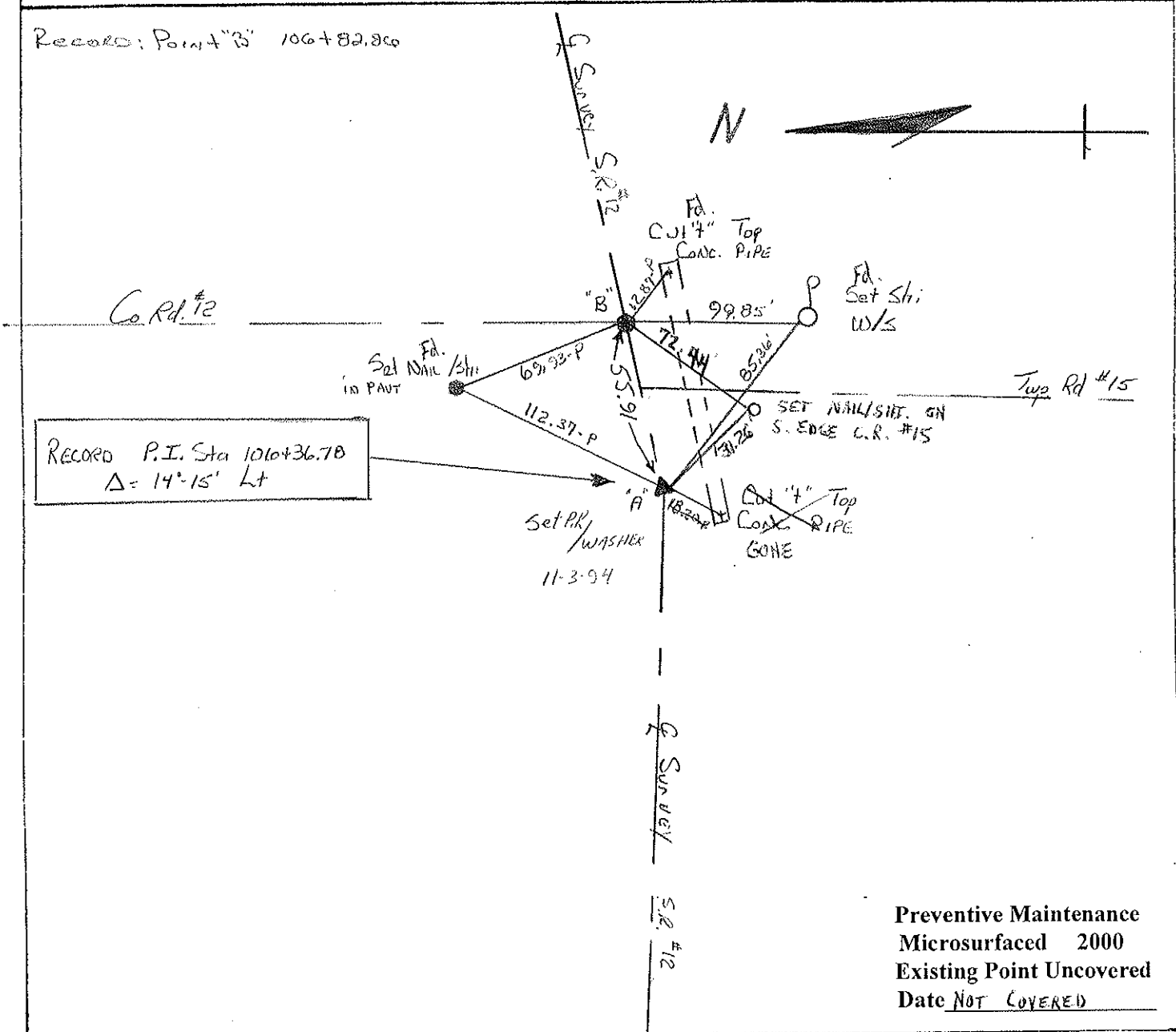
T 4 N R 15 E

B - 5/8" I-Rod
A - P.K./WASHER
Set 11-3-94
c.l.



TYPE MONUMENT B = 5/8" Re Rod A = R.R. Spike
ON SURFACE - BELOW 6" Below A = at SURFACE
~~LEFT~~ - C PAV'T. - RIGHT A = 296' R B = 247' R
11" TO Rt EDGE PAVEMENT
S.L.M. A = 106+44 B = 106+98

RECORD: POINT "B" 106+82.850



Preventive Maintenance
Microsurfaced 2000
Existing Point Uncovered
Date NOT COVERED

County Sandusky S.R. #12

Date 8/27/84 Drawn 9/17/84

Township Jackson

Weather sunny

Section 25

Temp. 74°

T4N, R4E

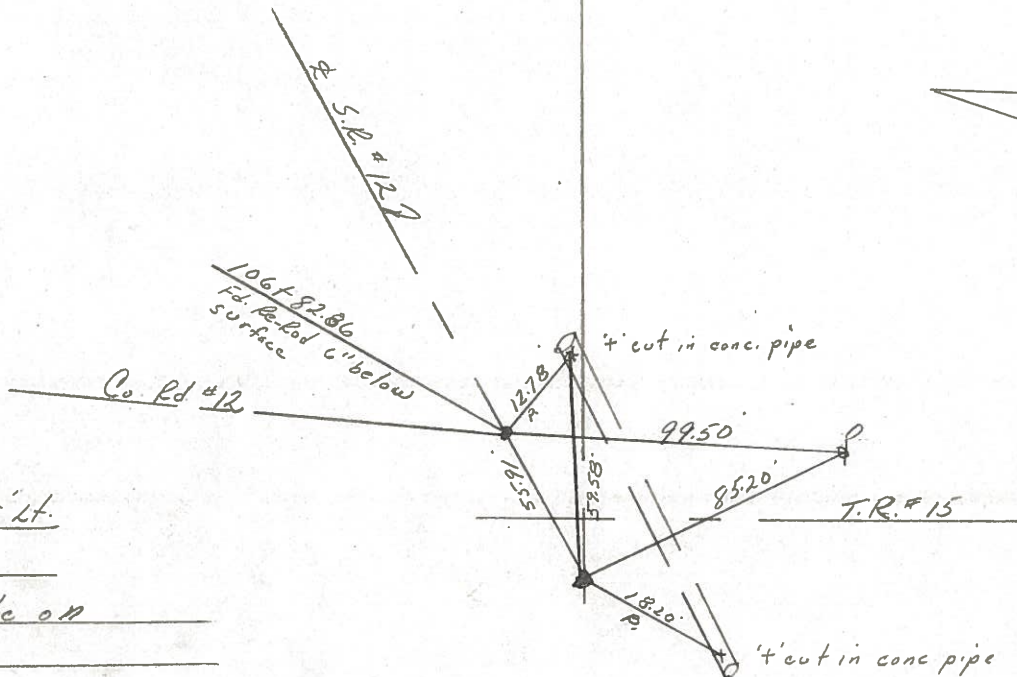
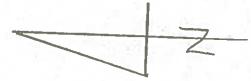
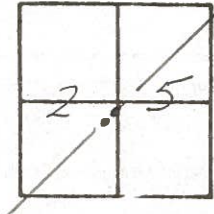
Personnel Cronin

Ripple

Geyman

Barbour

4



P.I. - Δ = 14°15' Lt.
106+36.78
Fd. R.R. spike on
surface

O.D.O.T. DISTRICT 2 SURVEY OFFICE

Sht. 13 of 17

State Route #12

County SANDUSKY

Township JACKSON

Section 25

T4N, R14E

Personnel Cronin

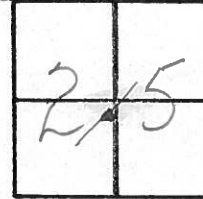
Pipple

Geyman

Date 6/13/79

Weather sunny

Temp. 70°

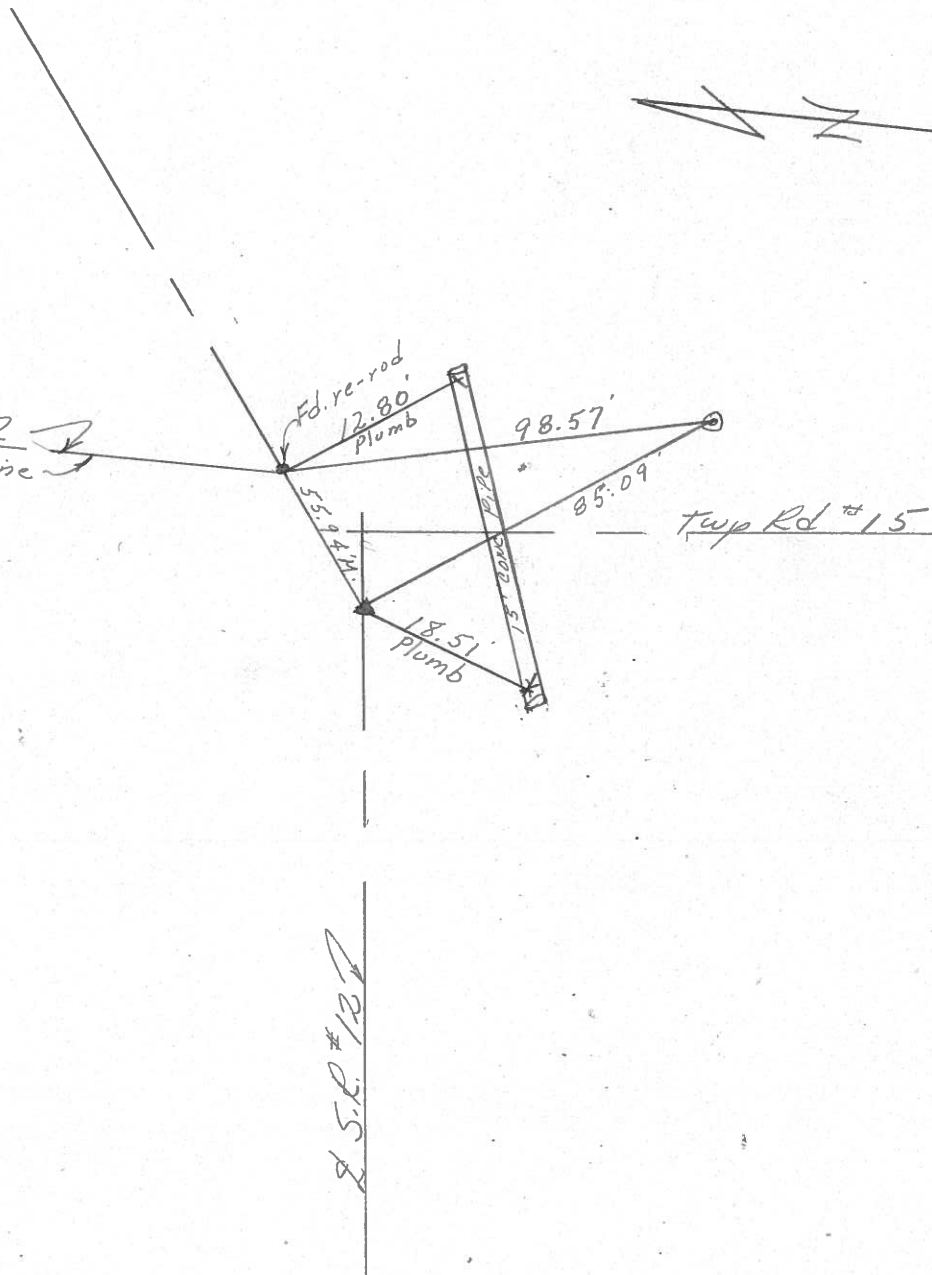


(4)



County Rd. #12
N-5 1/2 Sec. line

P.I. A = 14° 15' Lt.
106 + 36.78
I.R.R. spike at surface



PERSONNEL TITLE PERSONNEL TITLE

COUNTY Sandusky

DATE Feb-11-64

Silvester

g

Crow

S. R. 12-113

WEATHER ~~Fet~~ Clear

SEC.

TEMP. 25°

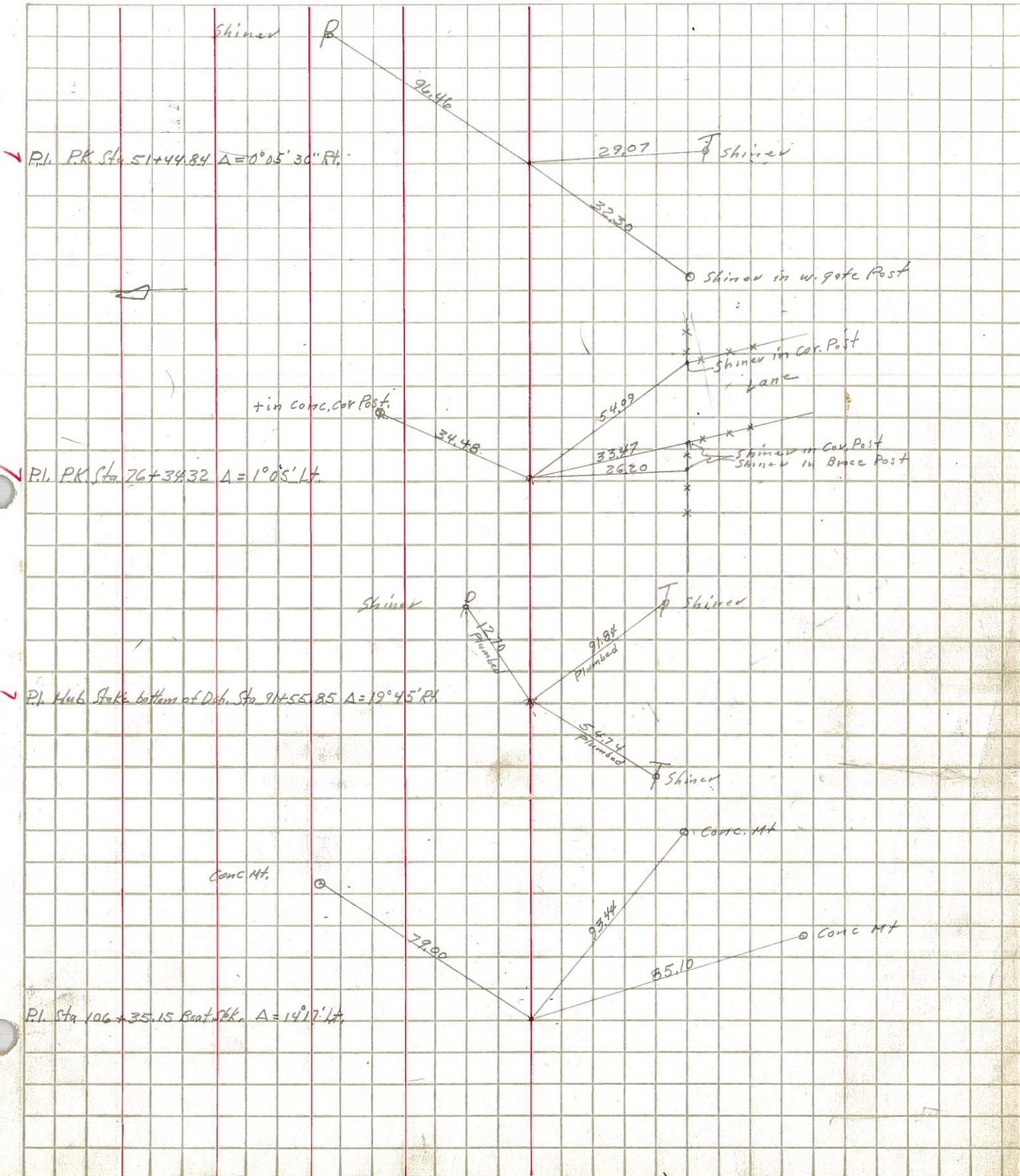
DESCRIPTION wit. ties

LEFT

CENTER LINE

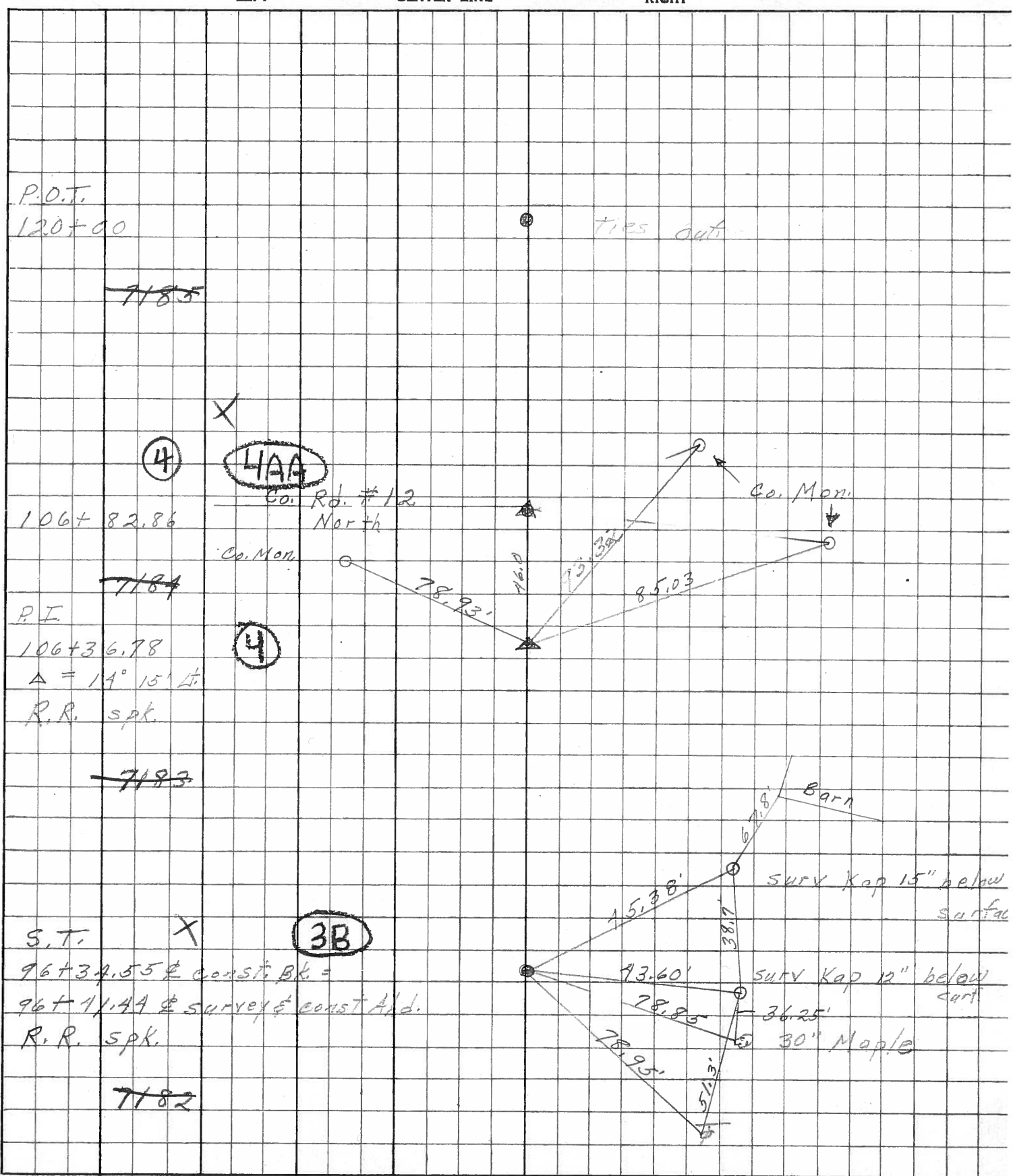
RIGHT

JOB NO.



PERSONNEL	TITLE	PERSONNEL	TITLE	COUNTY	DATE
<u>Schneider</u>		<u>Potts</u>		<u>Sandusky</u>	<u>Jan. 1968</u>
<u>Mosser</u>				S. R. <u>12</u>	WEATHER
<u>Barboar</u>				SEC. <u>0.00 - 1.02</u>	TEMP.
<u>Redding</u>					

DESCRIPTION Ties for Control Points JOB NO.



PERSONNEL TITLE PERSONNEL TITLE

COUNTY Sandusky DATE 4-22-57

S. R. #12 WEATHER

SEC. TEMP.

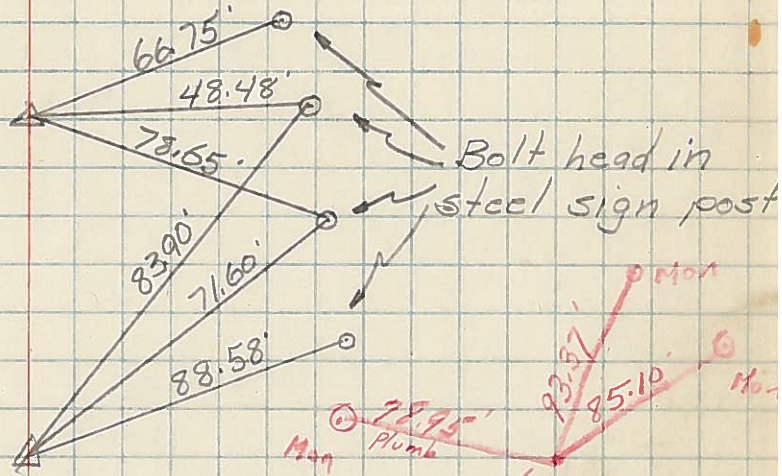
DESCRIPTION Relocation Controll point ties JOB NO.

P.I. Sta. 106+82.86

Δ = 5.8° #12

361

4AA



P.I. Sta. 106+36.78

Δ = 140°-15' Lt.

Spk. on Top

4

P.K. washer atop R. Spk

SPK on Top

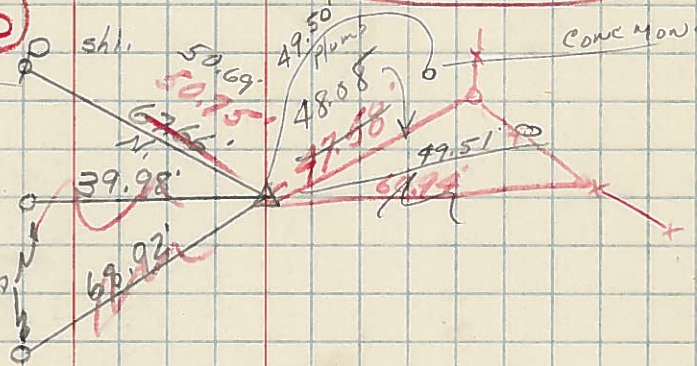
P.I. Sta. 144+46.33

Δ = 0°-21' Rt.

C. RL #118

5

Bolt head in steel sign post



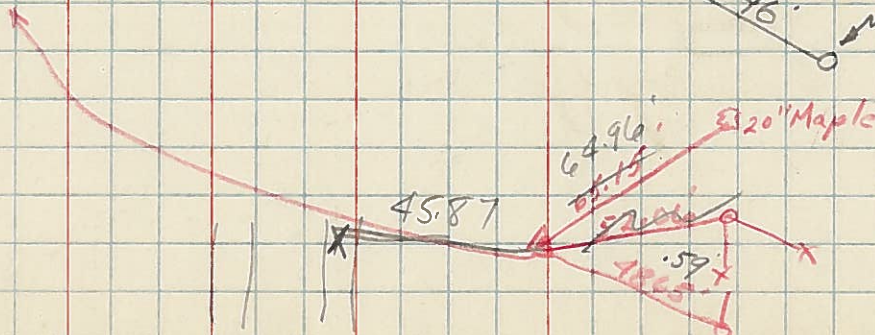
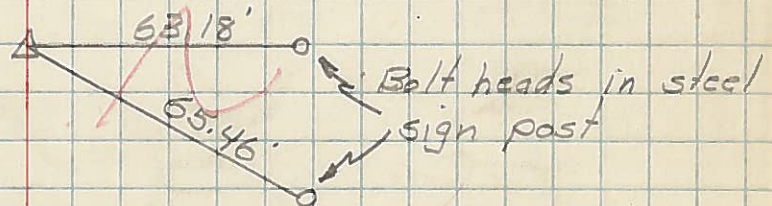
Spk. on top

P.I. Sta. 159+73.35

Δ = 0°-37' Lt.

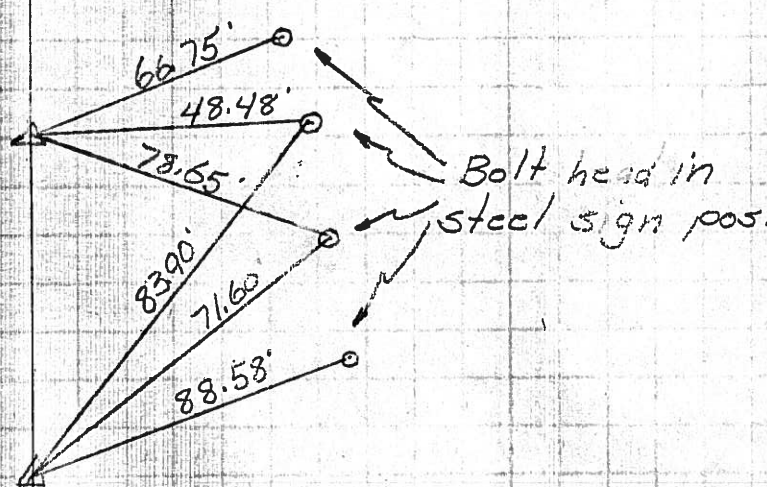
C. RL #23

6



PERSONNEL	TITLE	PERSONNEL	TITLE	COUNTY	DATE	WEATHER	TEMP.
				Sandusky	4-22-57		
				S. R. #12			
DESCRIPTION	Relocation	Control point ties					
	LEFT	CENTER LINE	RIGHT				

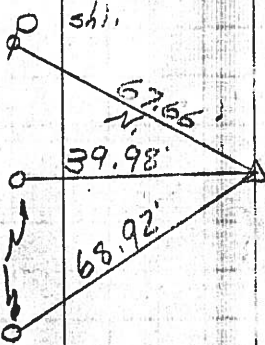
P.I. Sta. 106+82.86
 $\Delta = 52^{\circ} 12'$
 $\frac{36}{78}$
 $\frac{46}{08}$



P.I. Sta. 106+36.78
 $\Delta = 14^{\circ} 52'$

P.I. Sta. 44+5.33
 $\Delta = 0^{\circ} 2' R.$

Bolt head in steel sign post



P.I. Sta. 159+73.35
 $\Delta = 0^{\circ} 37' L.$

