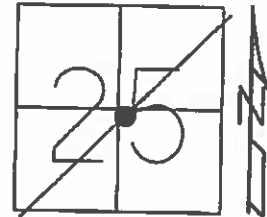


**O.D.O.T. DISTRICT 2 SURVEY OFFICE (USE ONLY)**

PERSONNEL \_\_\_\_\_ REFERENCE NO. 4 AA SHEET 15 OF 24  
 NOTES RHOADES DATE 5-7-15 ROUTE SR 12  
 H.C. O'DONNELL WEATHER SUNNY COUNTY SANDUSKY  
 R.C. LEU TEMP. 85°F TOWNSHIP JACKSON  
 SECTION 25  
 T 4 N R 15 E

TYPE MONUMENT 5/8" REROD  
~~ON SURFACE~~ - BELOW 6"  
~~LEFT~~ - CL PAV'T - RIGHT 24.7'  
11' TO RT EDGE PAVEMENT  
 S.L.M. 106+90.91



Grid: Northing: 586288.7367 Easting: 1776752.63

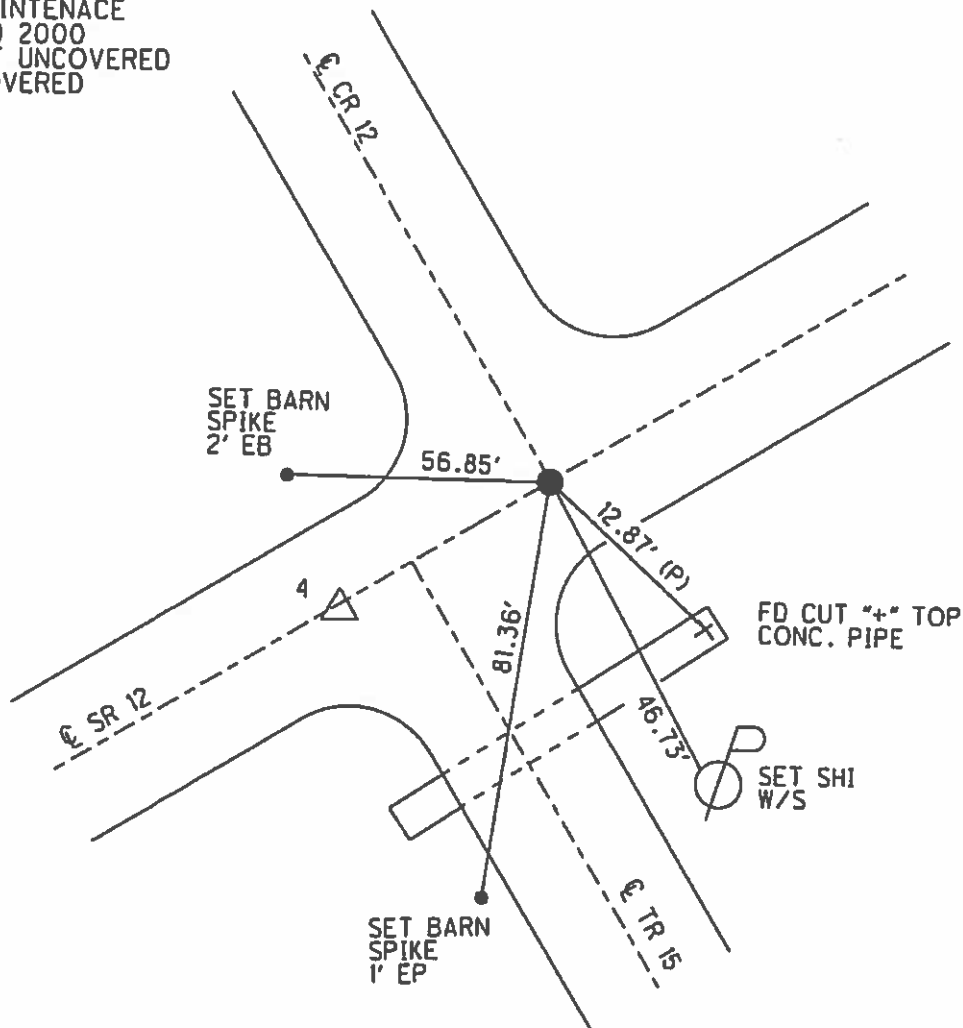
RECORD:  
 STA. 106+82.86

DIST. 4-4AA= 55.91'

PREVENTIVE MAINTENANCE  
 MICROSURFACED 2000  
 EXISTING POINT UNCOVERED  
 DATE - NOT COVERED

FD IPIN  
 6" DOWN  
 GPS, REFAA4  
 5-16-13, SDC

NOT COVERED  
 9-29-16



# O.D.O.T. DISTRICT 2 SURVEY OFFICE

PERSONNEL \_\_\_\_\_

REFERENCE NO. 4

SHEET 13 OF \_\_\_\_\_

NOTES CHANEY

H.C. GEYMAN

R.C. BARBOUR

DATE 7-15-94

WEATHER FAIR

TEMP. \_\_\_\_\_

ROUTE SR12

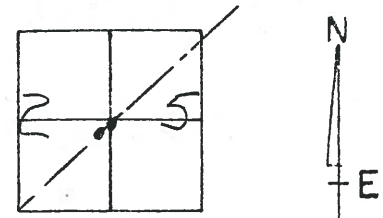
COUNTY SANDUSKY

TOWNSHIP JACKSON

SECTION 25

T 4 N R 15 E

B - 5/8" I-Rod  
A - P.K./WASHER  
Set 11-3-94  
C.L.



TYPE MONUMENT B = 5/8" Re Rod A = R.R. Spike  
ON SURFACE - BELOW 6" Below A = at SURFACE  
~~LEFT~~ - C. PAV'T. - RIGHT A = 29.6' Rt B = 24.7' Rt  
11' TO Rt EDGE PAVEMENT  
S.L.M. A = 106+47 B = 106+98

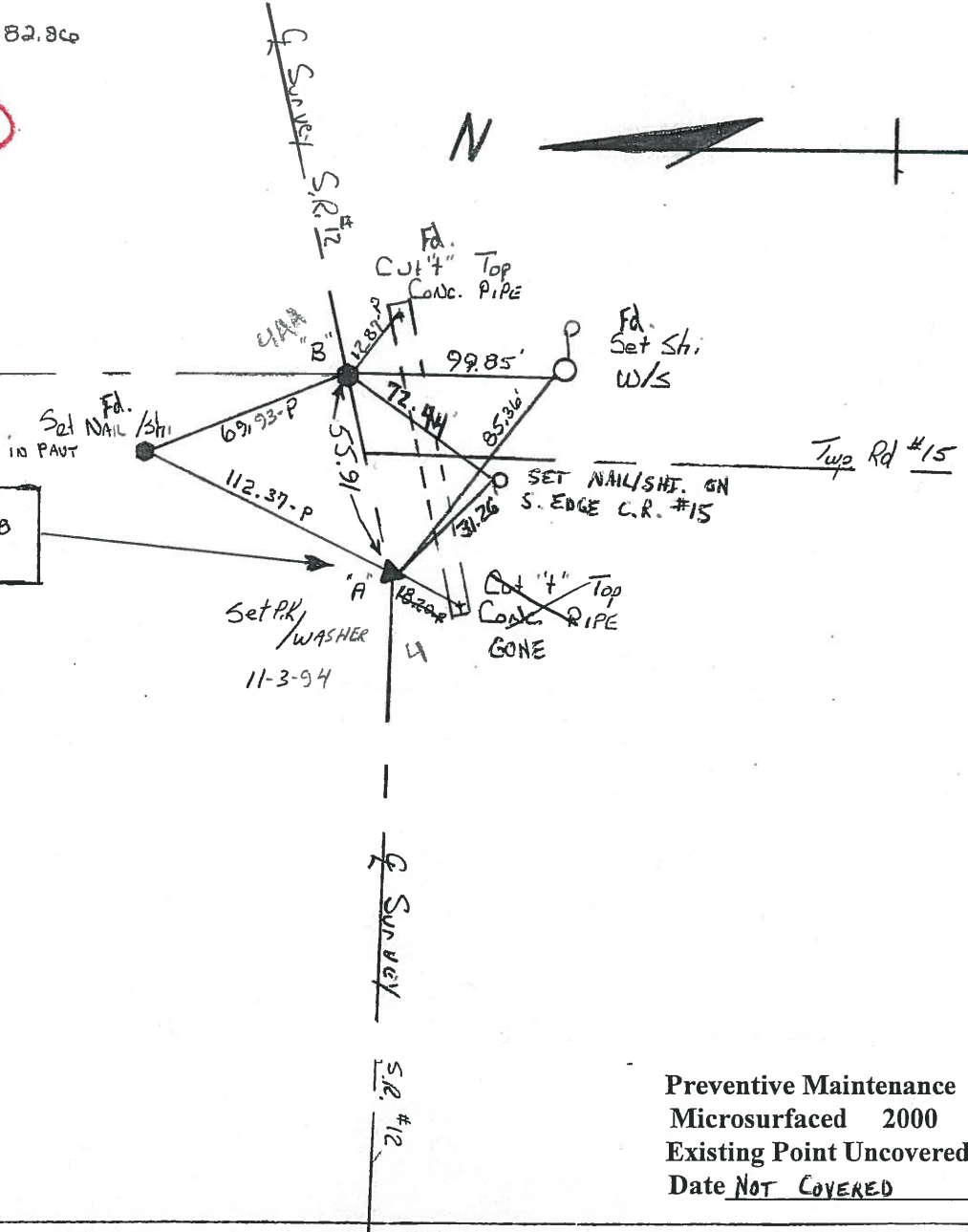
Record: Point "B" 106+82.80

4AA



Co. Rd. #12

RECORD P.I. Sta 106+36.70  
 $\Delta = 14'-15'$  Lt



Preventive Maintenance  
Microsurfaced 2000  
Existing Point Uncovered  
Date NOT COVERED

County Sandusky S.R. #12

Date 8/27/84 Drawn 9/17/84

Township Jackson

Weather sunny

Section 25

Temp. 74°

T4N, R14E

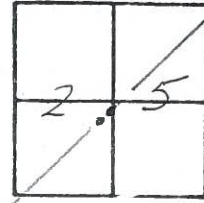
Personnel Cronin

Ripple

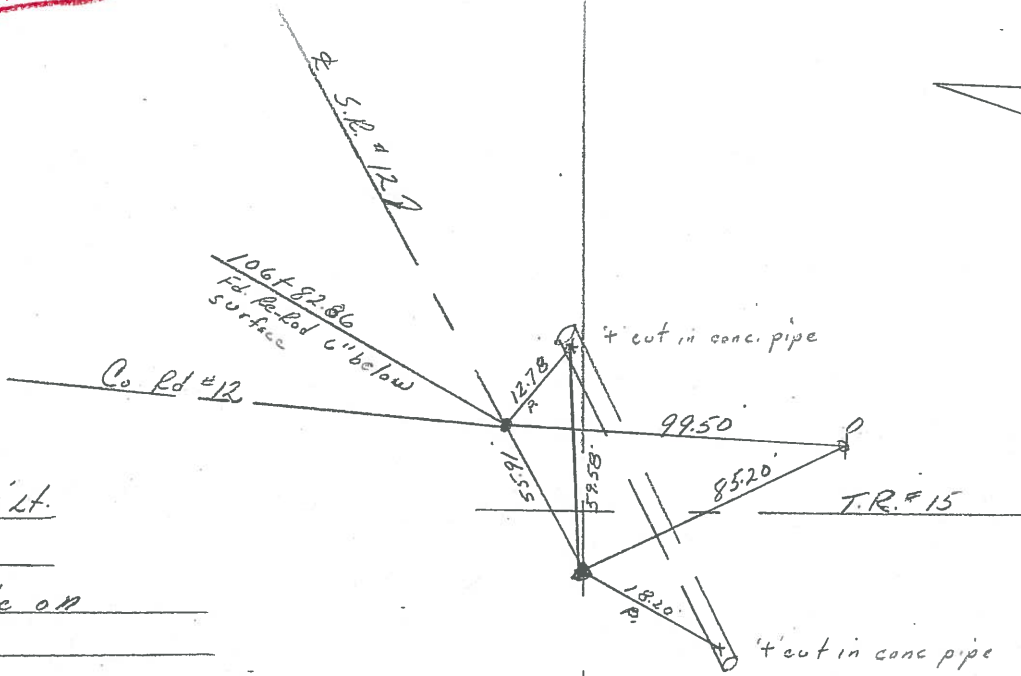
Geyman

Barbour

4



4AA



P.I. - Δ = 14°15' Lt.  
106+36.78  
Fd. R.R. spike on  
surface

S.R. #12

OD.O.T. DISTRICT 2 SURVEY OFFICE

Sht. 13 of 17

State Route #12

County SANDUSKY

Township JACKSON

Section 25

T4N, R14E

Personnel Cronin

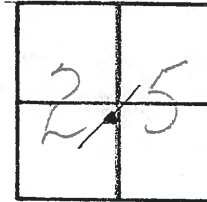
Ripple

Geyman

Date 6/13/79

Weather sunny

Temp. 70°

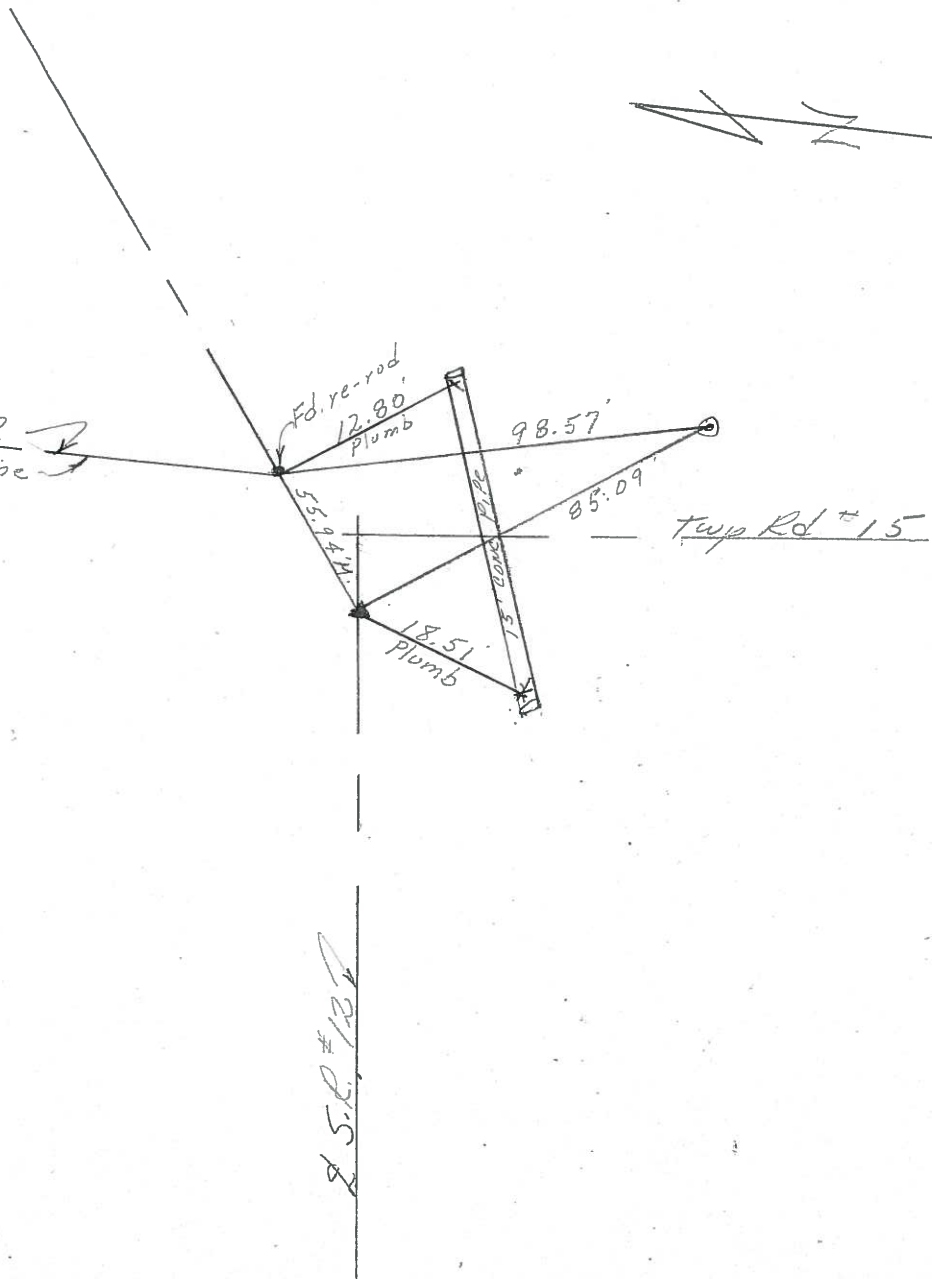


4

4AA

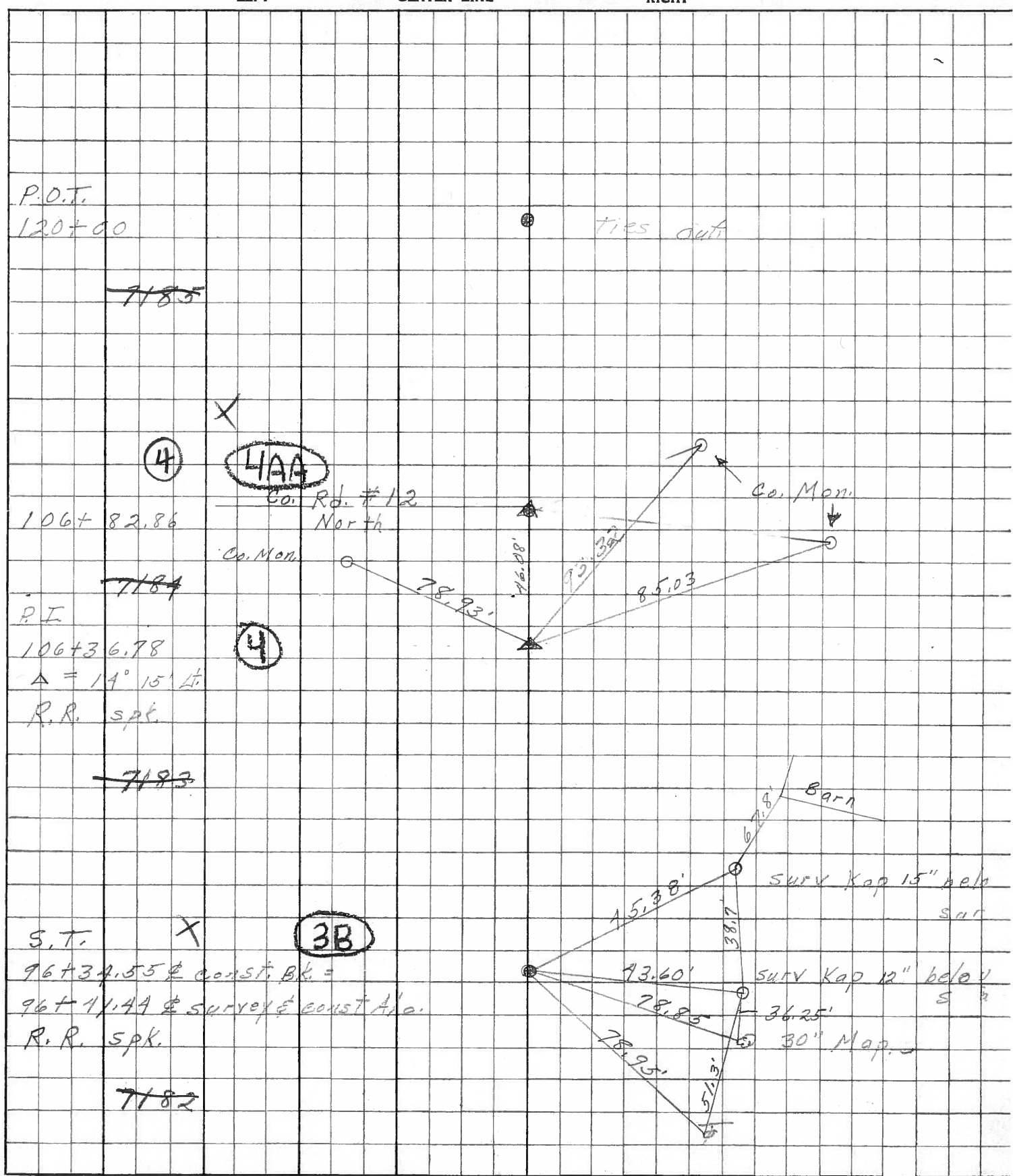
County Rd. #12  
N-5 1/2 Sec. Line

P.I.  $\Delta = 14^{\circ}15' Lt.$   
106 + 36.78  
F.R.R. splice at surface



S.R. #12

PERSONNEL	TITLE	PERSONNEL	TITLE	COUNTY	DATE
<u>Schneider</u>		<u>Potts</u>		<u>Sandusky</u>	<u>Jan. 1966</u>
<u>Mosser</u>				S. R. <u>12</u>	WEATHER
<u>Barboar</u>				SEC. <u>0.00 - 1.02</u>	TEMP.
<u>Redding</u>					
DESCRIPTION <u>Ties for Control Points</u>				JOB NO.	



PERSONNEL TITLE PERSONNEL TITLE

COUNTY Sandusky DATE 4-22-57

S. R. # 12 WEATHER

SEC. TEMP.

DESCRIPTION Relocation Control point ties JOB NO.

LEFT CENTER LINE RIGHT

P.I. Sta. 106+82.86  
 $\Delta = 5^{\circ} 12'$

361

P.I. Sta. 106+36.78  
 $\Delta = 14^{\circ} 15'$

Spk on Top

P.K. Washer atop R. Spike

Spk on Top

P.I. Sta. 144+46.33

$\Delta = 0^{\circ} 21'$  Rt.

C. R. # 118

Bolt head in steel sign post

Spk on top

P.I. Sta. 159+73.35

$\Delta = 0^{\circ} 37'$  Lt.

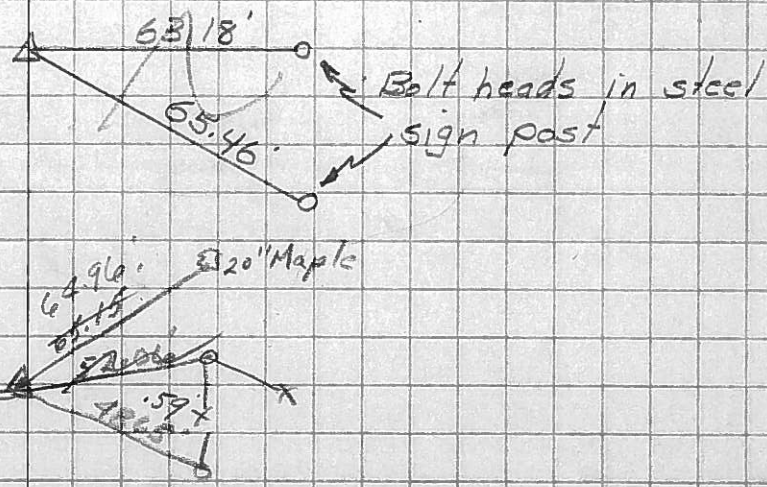
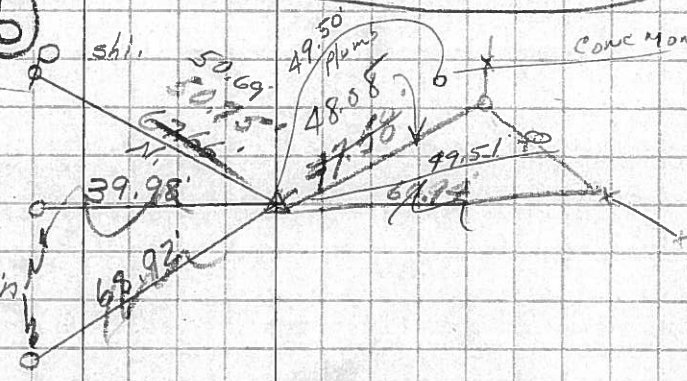
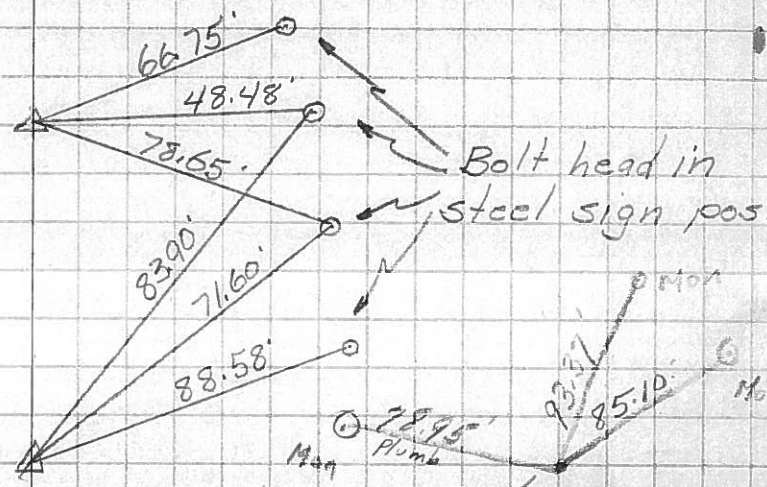
C. R. # 23

**4AA**

**4**

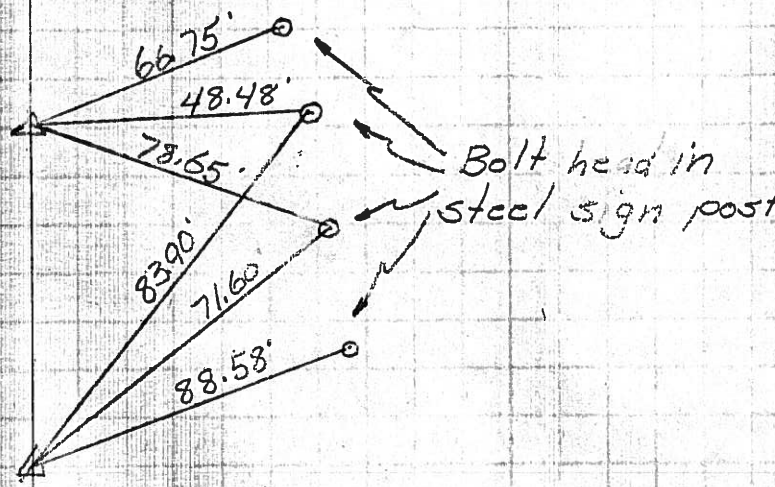
**5**

**6**



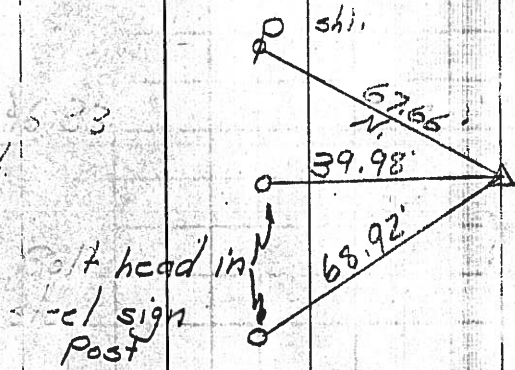
PERSONNEL	TITLE	PERSONNEL	TITLE	COUNTY	DATE
				<u>Sandusky</u>	<u>4-22-57</u>
				S. R. <u>#12</u>	WEATHER
				SEC.	TEMP.
DESCRIPTION	<u>Relocation</u>	<u>Control point ties</u>			JOB NO.
	LEFT	CENTER LINE	RIGHT		

P.I. Sta. 106+82.86  
 $\Delta = 52^{\circ} 12'$   
 $\frac{36.78}{46.08}$



P.I. Sta. 106+36.78  
 $\Delta = 14^{\circ} 52'$

P.I. Sta. 44+5.33  
 $\Delta = 0^{\circ} 21' R.$



P.I. Sta. 159+73.35  
 $\Delta = 0^{\circ} 37' L.$

