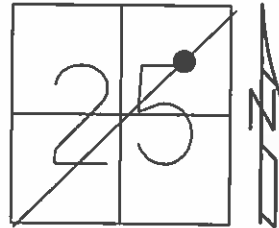


O.D.O.T. DISTRICT 2 SURVEY OFFICE (USE ONLY)

PERSONNEL \_\_\_\_\_ REFERENCE NO. 4 A SHEET 16 OF 24  
 NOTES RHOADES DATE 5-7-15 ROUTE SR 12  
 H.C. O'DONNELL WEATHER SUNNY COUNTY SANDUSKY  
 R.C. LEU TEMP. 82°F TOWNSHIP JACKSON  
 \_\_\_\_\_ SECTION 25  
 \_\_\_\_\_ T 4 N R 14 E

TYPE MONUMENT PK/WASHER  
~~ON SURFACE~~ - BELOW 2"  
 LEFT - ☉ PAV'T - RIGHT ON  
13.3' TO RT EDGE PAVEMENT  
 S.L.M. 128+97.50



Grid: Northing: 587844.9717 Easting: 1778317.041

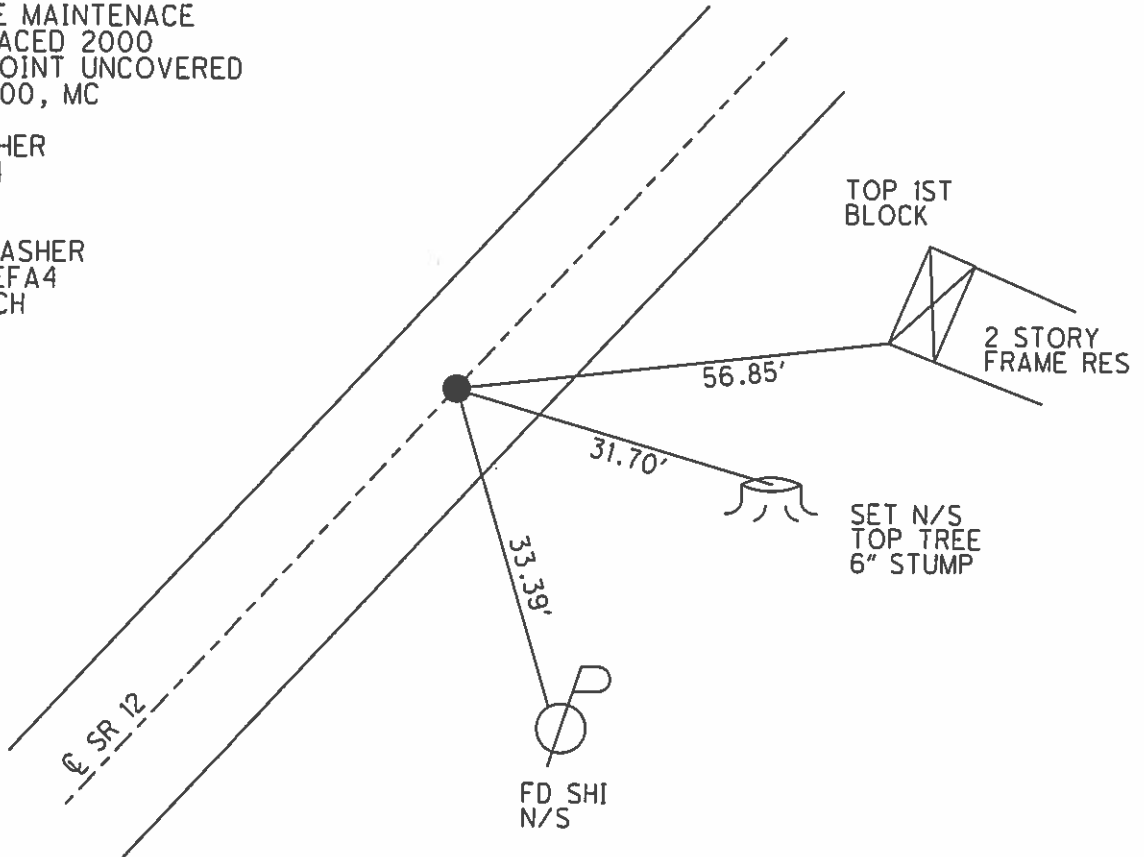
RECORD: P.O.T.  
 STA. 129+00  
 FD PK/WASHER

SET P.K./WASHER  
 11-7-94

PREVENTIVE MAINTENANCE  
 MICROSURFACED 2000  
 EXISTING POINT UNCOVERED  
 DATE 9-12-00, MC

FD PK/WASHER  
 GPS, REFA4  
 03-26-13

SET MAG/WASHER  
 GPS, NEWREFA4  
 9-29-16, DCH



FD SHI  
 N/S

# O.D.O.T. DISTRICT 2 SURVEY OFFICE

PERSONNEL

REFERENCE NO. 4-A

SHEET 14 OF     

NOTES LOEHRKE

H.C. CANTERBURY

R.C. MOSEK

DATE 7-15-94

WEATHER NICE

TEMP. +60°F

ROUTE S.R. 12

COUNTY SANDUSKY

TOWNSHIP Jackson

SECTION 25

T 4 N R 14 E

TYPE MONUMENT PK/WASH

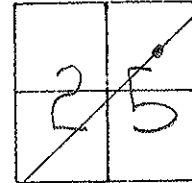
*Reset 11-9-94*

ON SURFACE - BELOW 2" ± Below

LEFT - C PAV'T. - RIGHT C PAV'T

13.3' TO Rt EDGE PAVEMENT

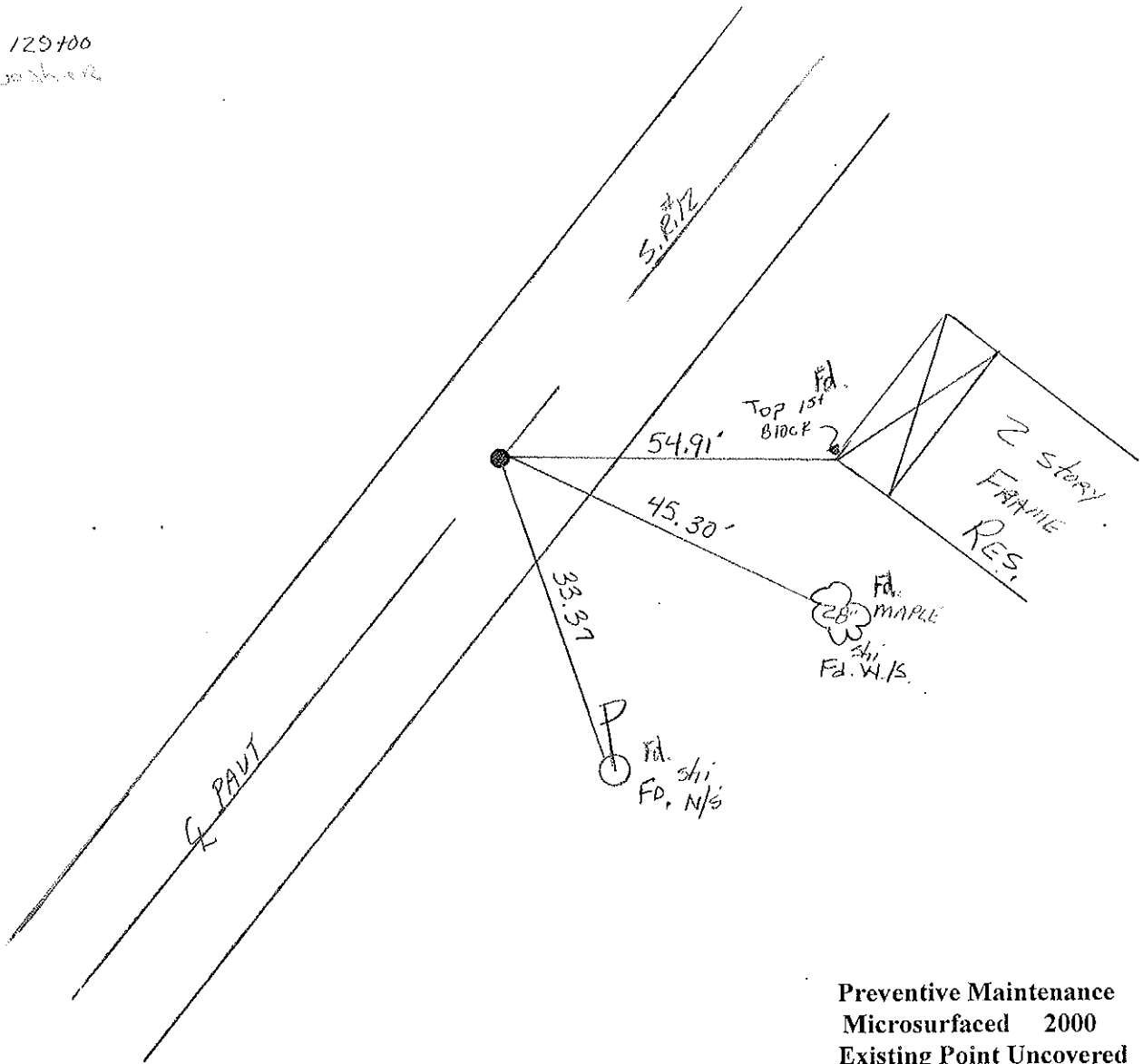
S.L.M. 129+06



RECORD

P.O.T. 129+00

P.K./washer



Preventive Maintenance  
 Microsurfaced 2000  
 Existing Point Uncovered  
 Date 9/12/2000 M.C.

County Sandusky S.R. #12

Date 8/27/84 Drawn 9/17/84

Township Jackson

Weather sunny

Section 25

Temp. 82°

T4N, R14E

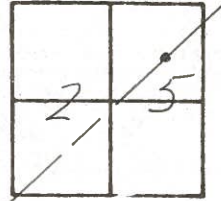
Personnel Cronin

Ripple

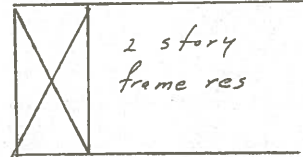
Geyman

Barbour

4 A



SR #12



top 1st block

54.91

45.28'

24" maple

33.35

P.O.T  
129+00  
set P.K. & washer atop  
P.K. & washer

County SANDUSKY S.R. # 12

Date 6/13/79

Township JACKSON

Weather sunny

Section 25

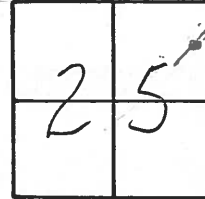
Temp. 75°

T 4 N, R 4 E

Personnel Cronin

Ripple

Geyman



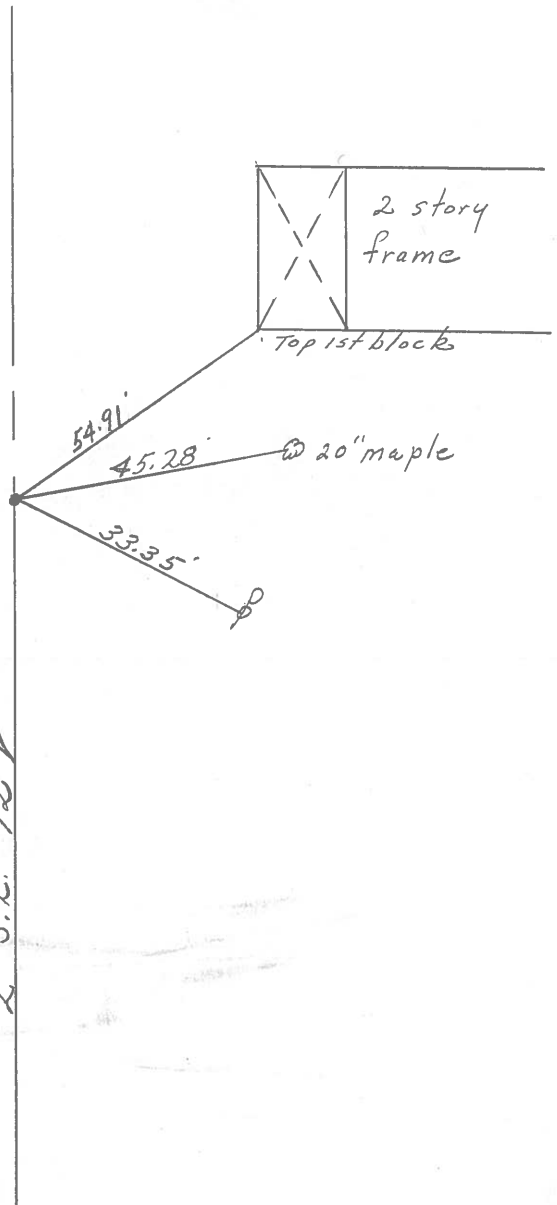
4-A



OD.T

129700

d.p.k. washer at surface



S.R. # 12

PERSONNEL TITLE PERSONNEL TITLE

Schneider  
Mosser  
Barbour  
Potts

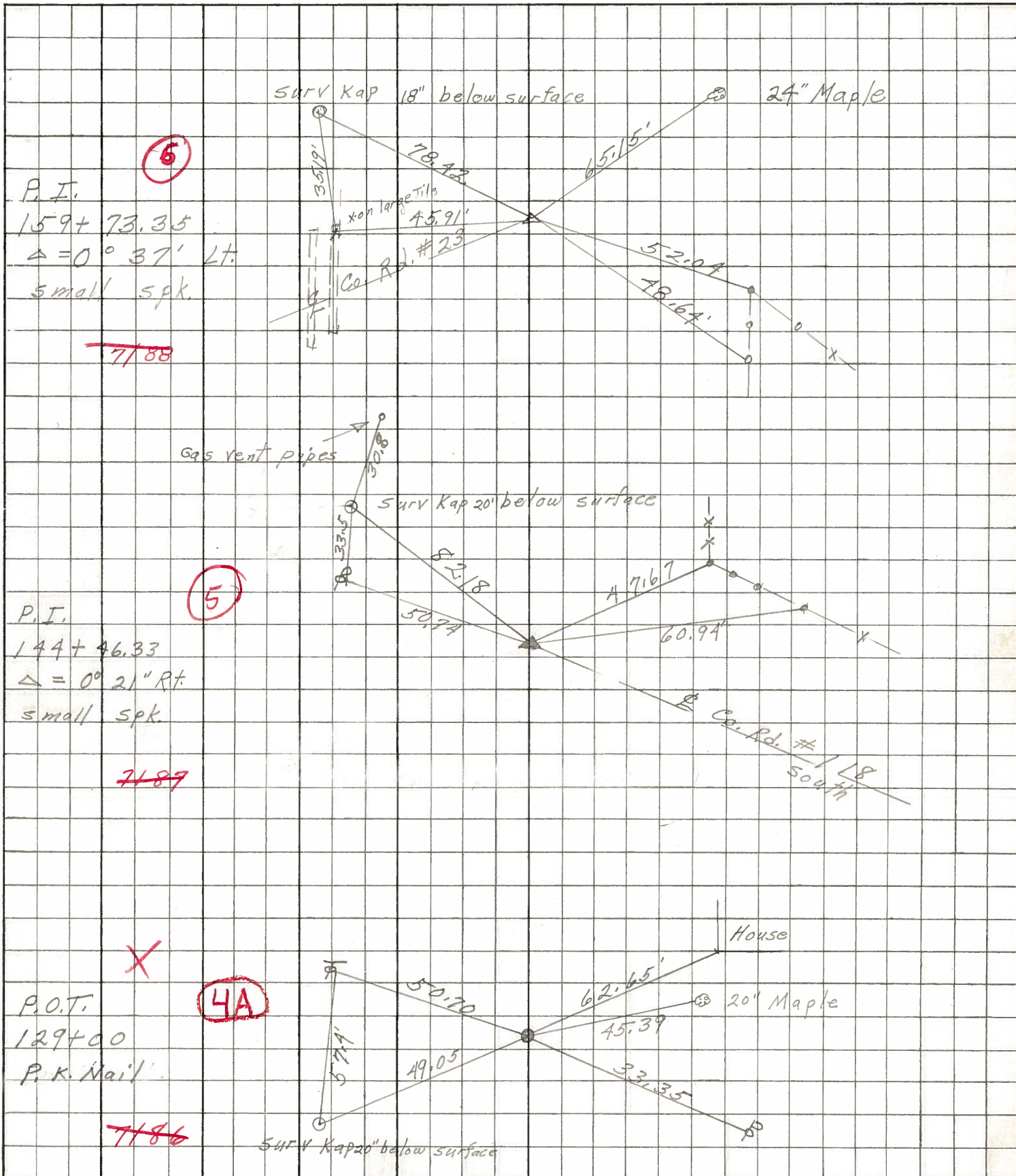
COUNTY Sandusky DATE Jan. 1968

S. R. 12 WEATHER

SEC. 1.02 TEMP.

DESCRIPTION Ties for control Points JOB NO.

LEFT CENTER LINE RIGHT



5

5

4A



PERSONNEL TITLE PERSONNEL TITLE

COUNTY Sandusky

DATE Feb. 1966  
7-25-57

S. R. #12

WEATHER

SEC.

TEMP.

DESCRIPTION

Relocation

P.O.T. ties

JOB NO.

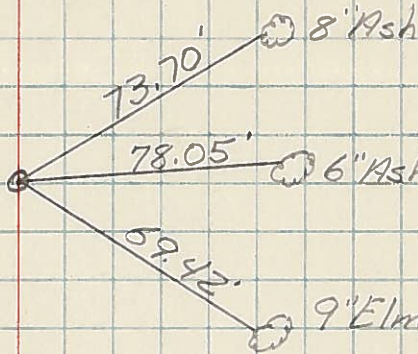
LEFT

CENTER LINE

RIGHT

Note:  
Nails & shiners  
in trees of pole

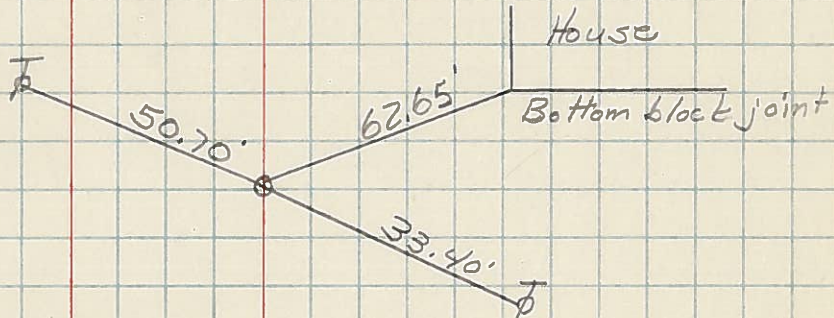
P.O.T. Sta. 120+00



2860

**4A**

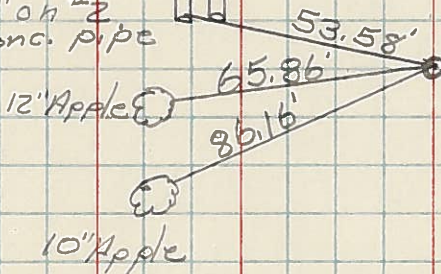
P.O.T. Sta. 129+00



"X" on #2  
Conc. pipe



P.O.T. Sta. 167+00



**6A**

Crosses on  
#1 Conc. pipe

