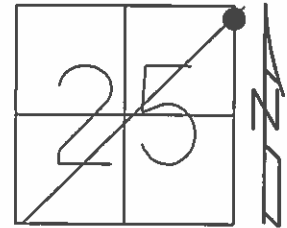


O.D.O.T. DISTRICT 2 SURVEY OFFICE (USE ONLY)

PERSONNEL \_\_\_\_\_ REFERENCE NO. 5 SHEET 17 OF 24  
 NOTES RHOADES DATE 5-7-15 ROUTE SR 12  
 H.C. O'DONNELL WEATHER SUNNY COUNTY SANDUSKY  
 R.C. LEU TEMP. 82°F TOWNSHIP JACKSON  
 \_\_\_\_\_ SECTION 25  
 \_\_\_\_\_ T 4 N R 14 E

TYPE MONUMENT PK/WASHER  
 ON SURFACE - ~~BELOW~~ ON  
 LEFT - CL PAV'T - RIGHT ON  
13.4' TO RT EDGE PAVEMENT  
 S.L.M. 144+43.45



Grid: Northing: 588934.7946 Easting: 1779413.478

RECORD:  
 P.I.  $\Delta=0^{\circ}21'00''RT$   
 STA. 144+46.33  
 RR.SPIKE

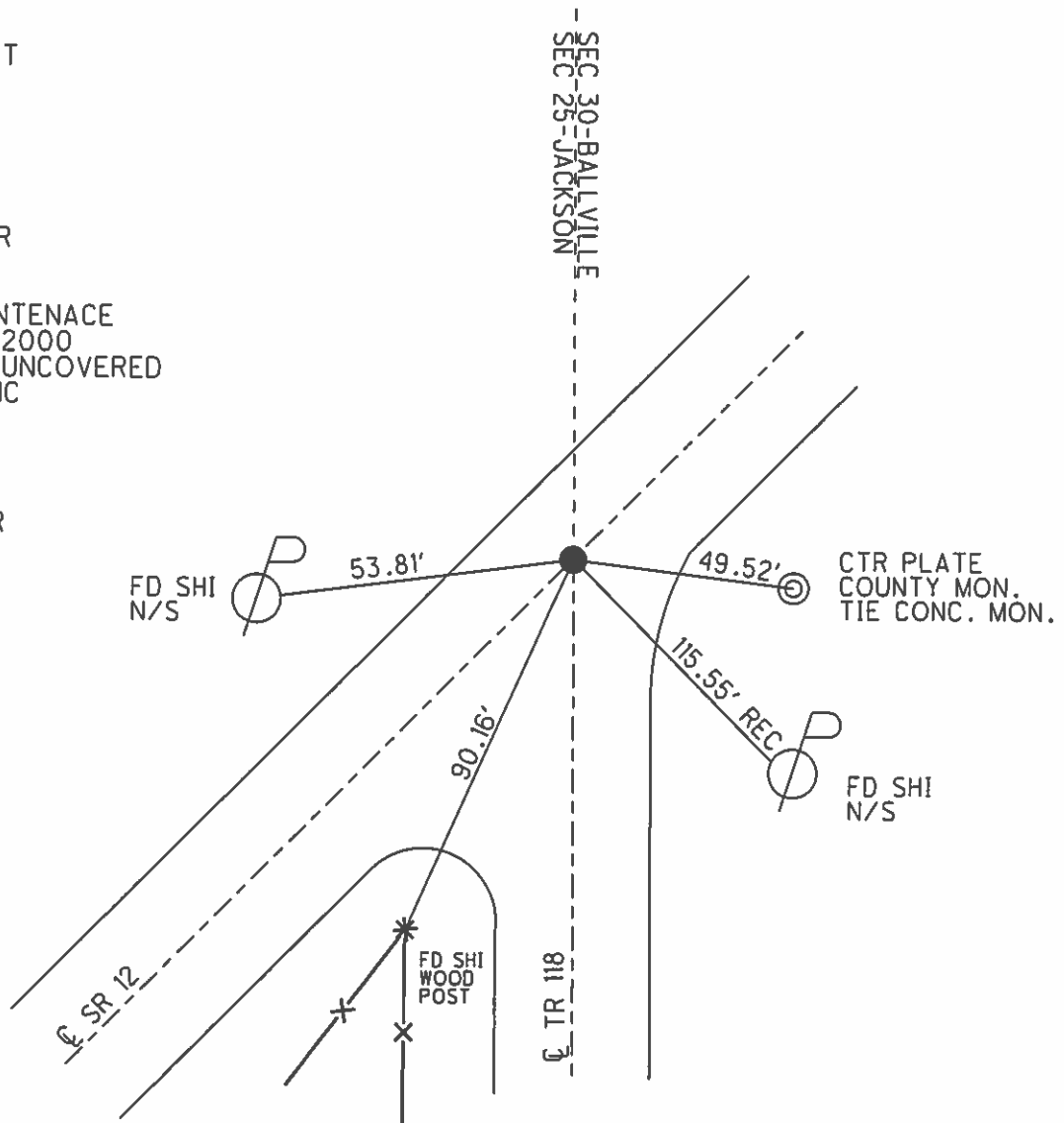
FD P.K./WASHER  
 7/15/94, CL

SET P.K./WASHER  
 11-7-94

PREVENTIVE MAINTENACE  
 MICROSURFACED 2000  
 EXISTING POINT UNCOVERED  
 DATE 9-12-00, MC

GPS, REF5  
 03-26-13

SET MAG/WASHER  
 GPS, NEWREF5  
 9-29-16, DCH



# O.D.O.T. DISTRICT 2 SURVEY OFFICE

PERSONNEL \_\_\_\_\_

REFERENCE NO. 5

SHEET 15 OF \_\_\_\_\_

NOTES LOEHRKE

H.C. CANTERBURY

R.C. MOSER

DATE 7-15-94

WEATHER NICE

TEMP. +60°F

ROUTE SR 12

COUNTY SANDUSKY

TOWNSHIP JACKSON

SECTION 25

T 4 N R 14 E

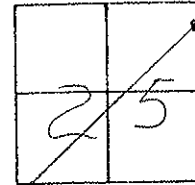
TYPE MONUMENT PK/WASHER Reset 11-7-94

ON SURFACE - BELOW Yes

LEFT - C PAV'T. - RIGHT ct

13.4' TO RT. EDGE PAVEMENT

S.L.M. 144 + 57

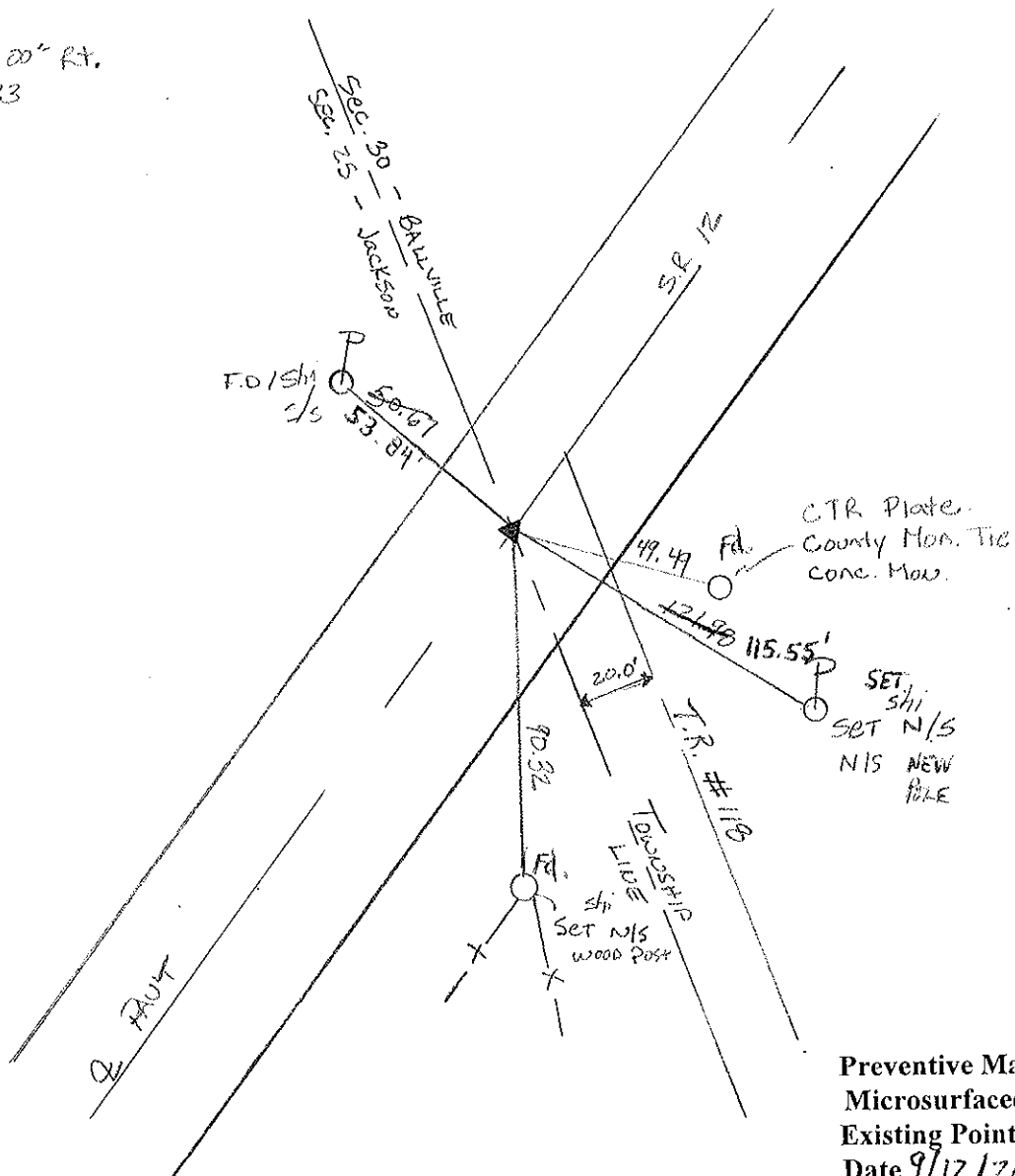


RECORD P.I.

$\Delta = 00^\circ - 21' - 00''$  RT.

Sta 144 + 46.33

R.R. SPIKE



Preventive Maintenance  
 Microsurfaced 2000  
 Existing Point Uncovered  
 Date 9/12/2000 M.L.

ODOT. DISTRICT 2 SURVEY OFFICE

SHEET 16 OF 19

County Sandusky S.R. #12

Date 8/27/84 Drawn 9/17/84

Township Jackson

Weather sunny

Section 25

Temp. 82°

T4N, R14E

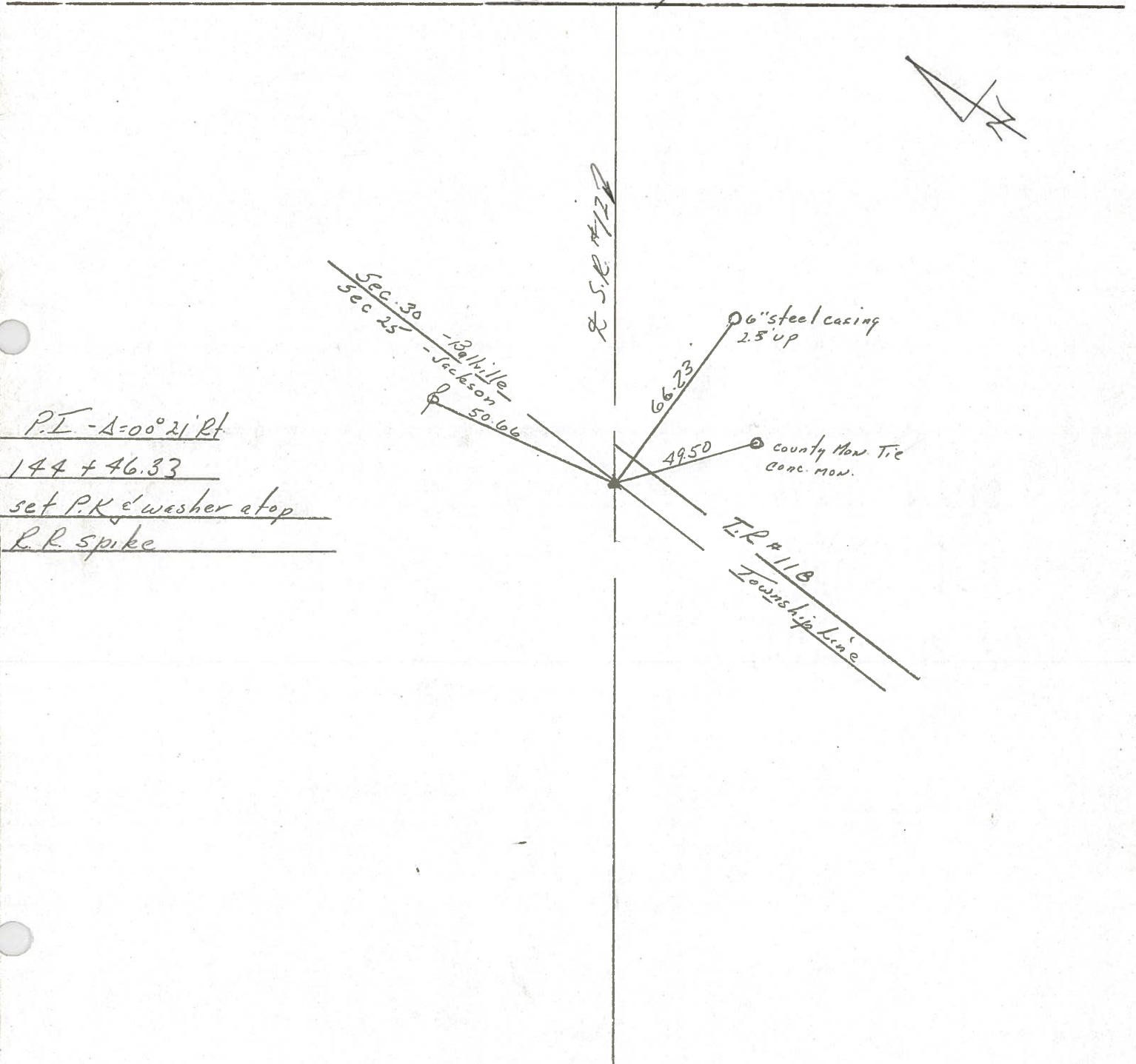
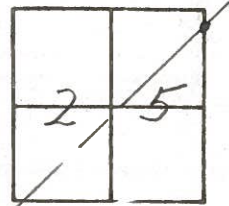
Personnel Cronin

Ripple

Geyman

Barbour

5



County SANDUSKY S.R. # 12

Date 6/13/79

Township JACKSON

Weather sunny

Section 25

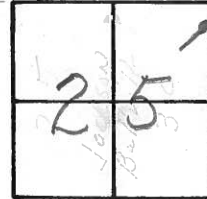
Temp. 75°

T4N, R14E T-4N, R15E

Personnel Cronin

Ripple

Geyman



(5)

Ballville Twp.  
Jackson Twp

plumb.  
49.50

Scan. Co.  
Conc. Mon

50.69

48.08  
49.51

Twp. Cd. # 118

S.R. # 12

? I. A = 00° 21' Rt.

144 + 46.33

? d. P.K. & washer at surface

? R. spike below



PERSONNEL TITLE PERSONNEL TITLE

Schneider

COUNTY Sandusky

DATE Jan. 1968

Mosser

S. R. 12

WEATHER

Barbour

SEC. 1.02

TEMP.

Potts

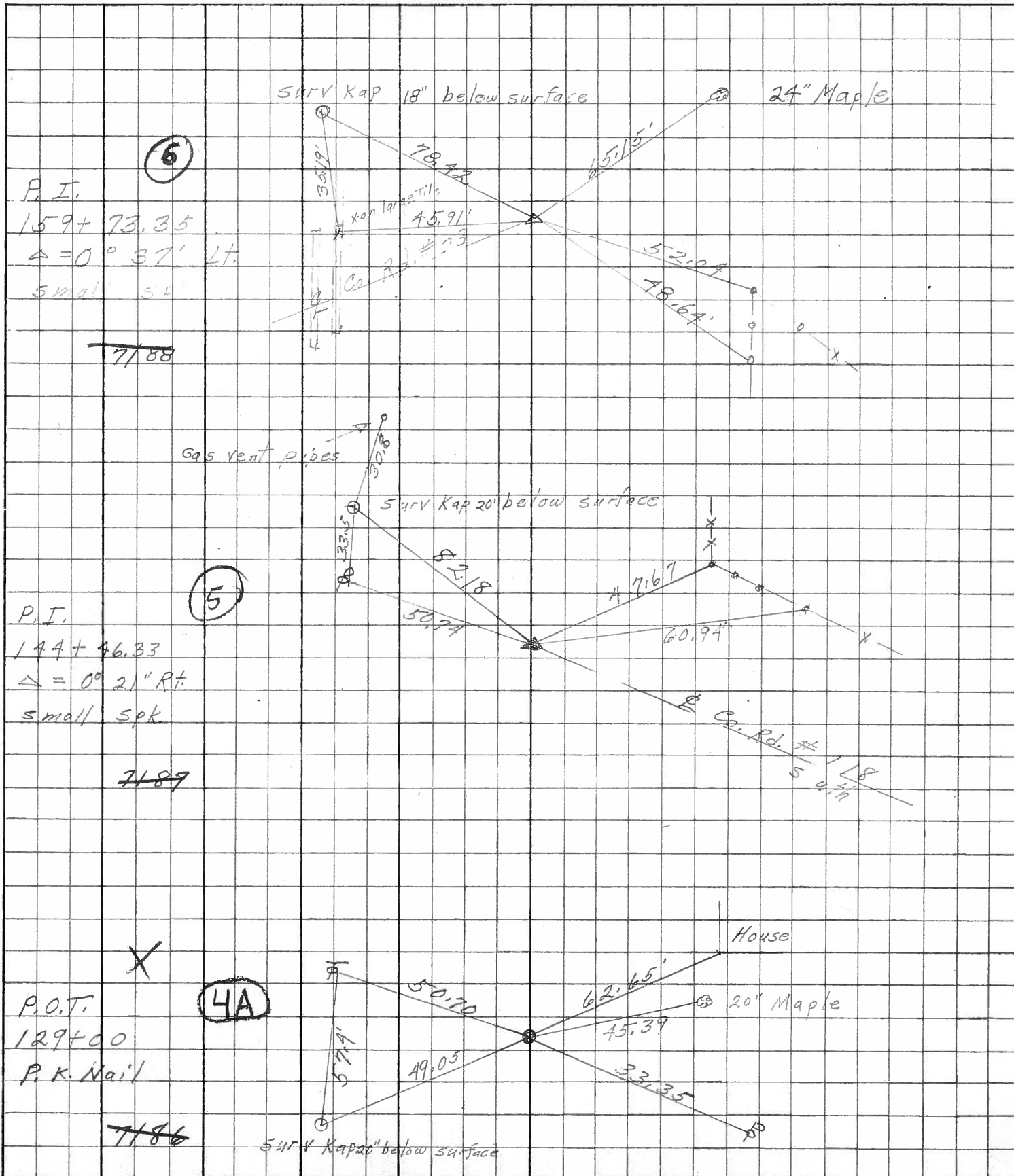
DESCRIPTION Ties for Control ints

JOB NO.

LEFT

CENTER LINE

RIGHT

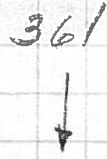


PERSONNEL	TITLE	PERSONNEL	TITLE

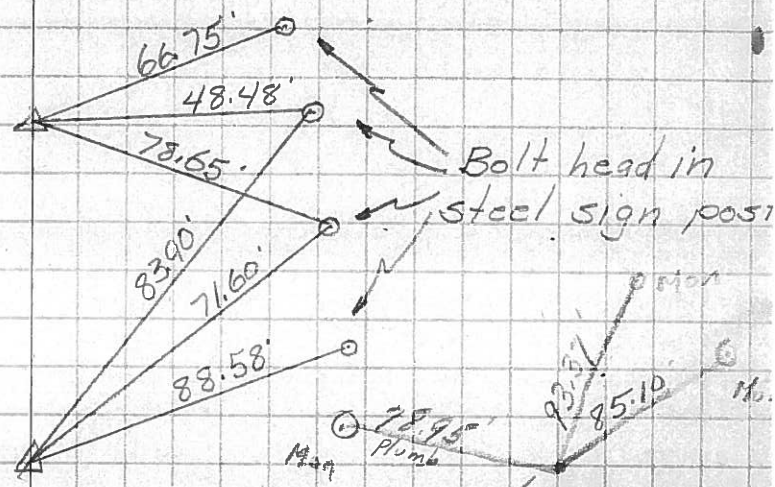
COUNTY Sandusky DATE 4-22-57  
 S. R. #12 WEATHER  
 SEC. TEMP.

DESCRIPTION Relocation Controll point ties  
 LEFT CENTER LINE RIGHT JOB NO.

P.I. Sta. 106+82.86  
 $\Delta = 5^{\circ} 12'$



4AA

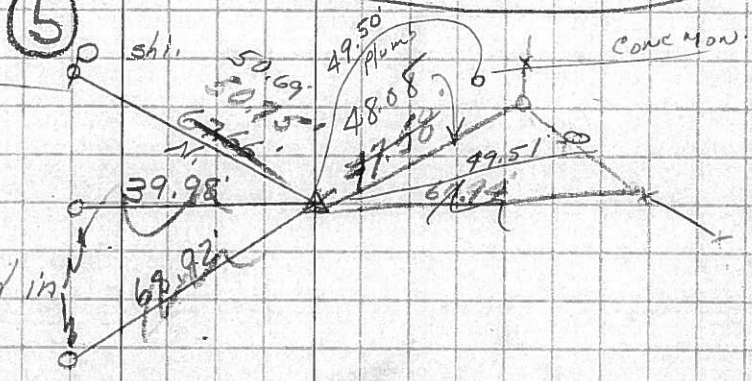


P.I. Sta. 106+36.78  
 $\Delta = 14^{\circ} 15' Lt.$

4

PK on Top  
 P.K. washer atop R.R. spike

5

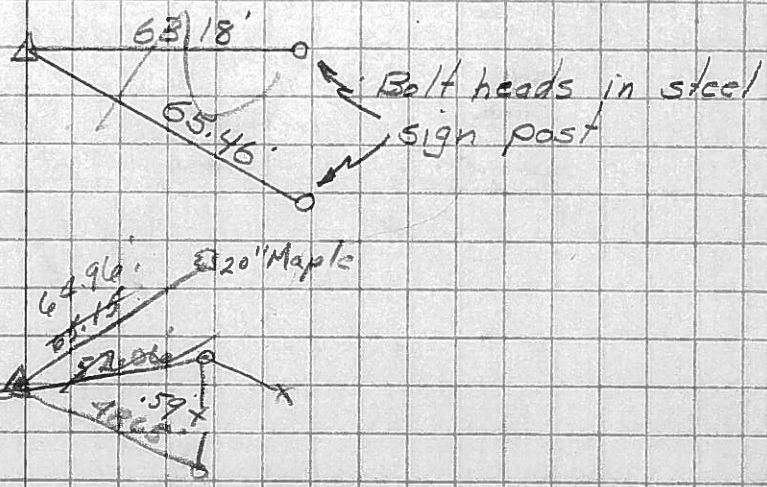


P.I. Sta. 144+46.33  
 $\Delta = 0^{\circ} 21' Lt.$   
 Co. RL #118

Bolt head in steel sign post

Spl. on Top  
 P.I. Sta. 159+73.35  
 $\Delta = 0^{\circ} 37' Lt.$   
 Co. #23

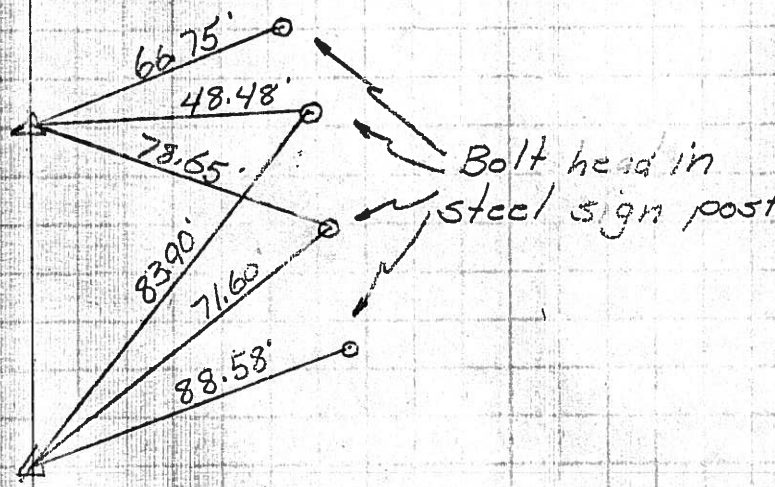
6





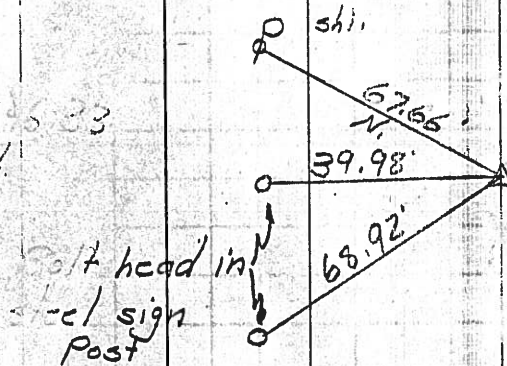
PERSONNEL	TITLE	PERSONNEL	TITLE	COUNTY	DATE
				<u>Sandusky</u>	<u>4-22-57</u>
				S. R. <u>#12</u>	WEATHER
				SEC.	TEMP.
DESCRIPTION	<u>Relocation</u>	<u>Control point ties</u>			JOB NO.
	LEFT	CENTER LINE	RIGHT		

P.I. Sta. 106+82.86  
 $\Delta = 52^{\circ} 12'$   
 $\frac{36}{78}$   
 $\frac{46}{08}$



P.I. Sta. 106+36.78  
 $\Delta = 14^{\circ} 52'$

P.I. Sta. 44+5.33  
 $\Delta = 0^{\circ} 2' R.$



P.I. Sta. 159+73.35  
 $\Delta = 0^{\circ} 37' L.$

