



# O.D.O.T. DISTRICT 2 SURVEY OFFICE

PERSONNEL \_\_\_\_\_

REFERENCE NO. 6

SHEET 16 OF \_\_\_\_\_

NOTES LOEHRKE

H.C. CANTERBURY

R.C. MOSEK

DATE 7-15-94

WEATHER NICE

TEMP. +60°F

ROUTE S.R. 12

COUNTY SANDUSKY

TOWNSHIP BALLVILLE

SECTION 19

T4 N R 15 E

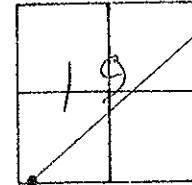
TYPE MONUMENT P.K. / WASHER Reset 11-7-94

ON SURFACE - BELOW 2" - Below

LEFT - C PAV'T. - RIGHT Yes

13.1 TORT EDGE PAVEMENT

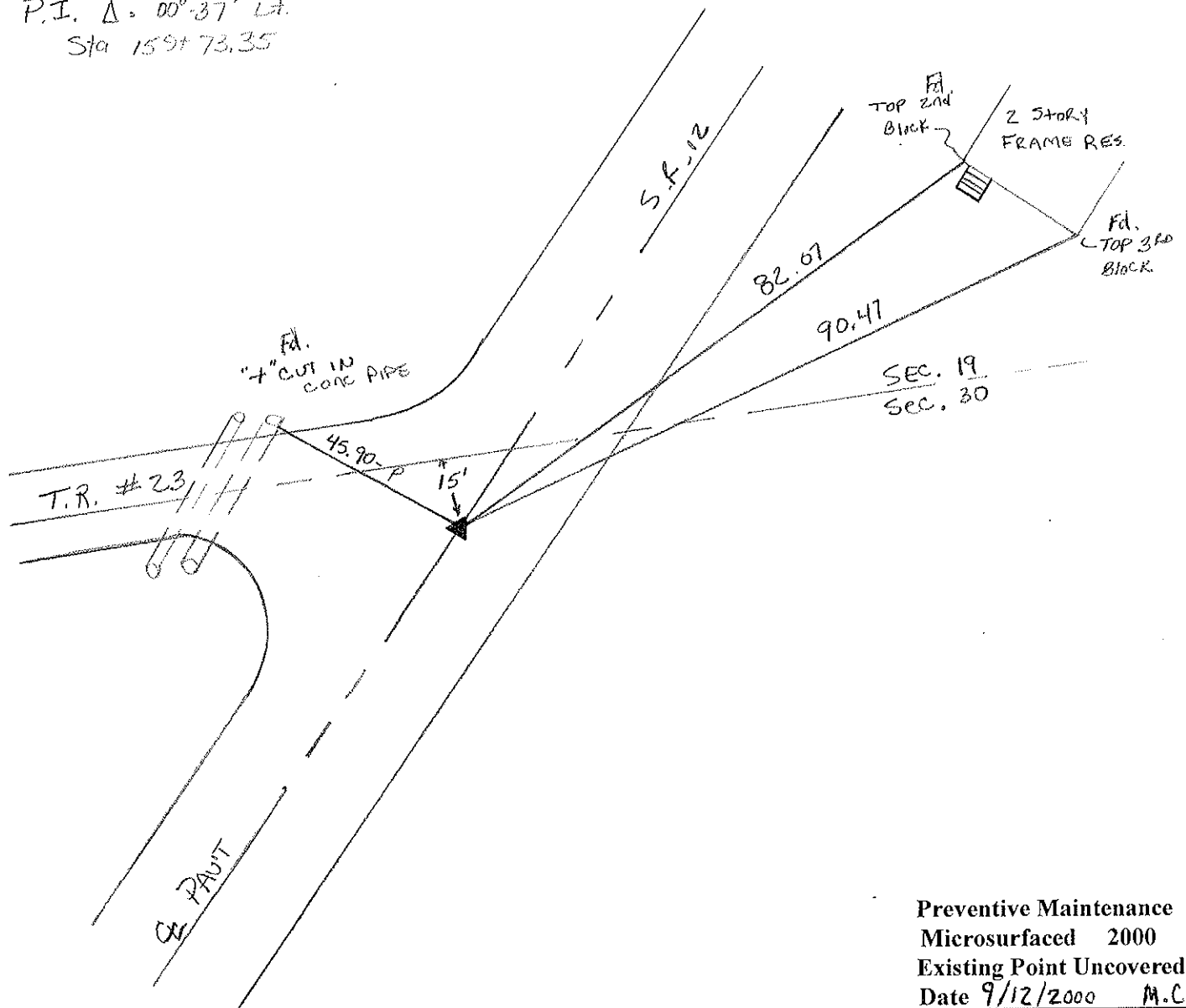
S.L.M. 159 + 85



Records:

P.I.  $\Delta = 00^{\circ} - 37' \text{ Lt.}$

Sta 159 + 73.35



Preventive Maintenance  
 Microsurfaced 2000  
 Existing Point Uncovered  
 Date 9/12/2000 M.C.

County Sandusky S.R. #12

Township Ballville

Section 19

T4N, R15E

Personnel Cronin

Ripple

Geyman

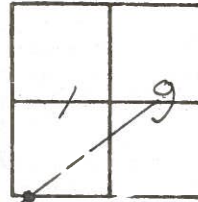
Barbour

6

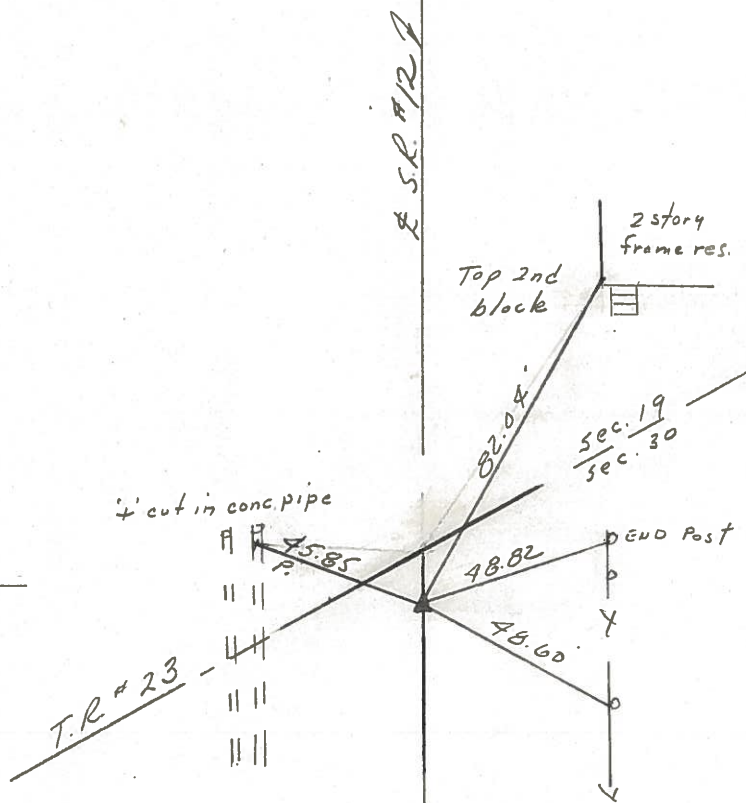
Date 8/27/84 - Drawn 9/17/84

Weather sunny

Temp. 82°



P.I.  $\Delta = 00^\circ 37' 14''$   
159+73.35  
Fd. P.K. 2" below surface



County SANDUSKY S.R. 12

Date 6/13/79

Township Ballville

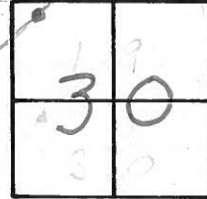
Weather Sunny

Section 30

Temp. 78°

T4N, R5E

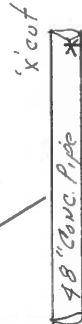
Personnel Cronin  
Ripple  
Geyman



(6)

P.I.  $\Delta = 00^{\circ}37' Lt.$   
159 + 73.35  
Ed. P.K. & washer at  
surface - R.F. spike below

County Rd. # 232



45.87'  
Plumb

64.96'

48.59'

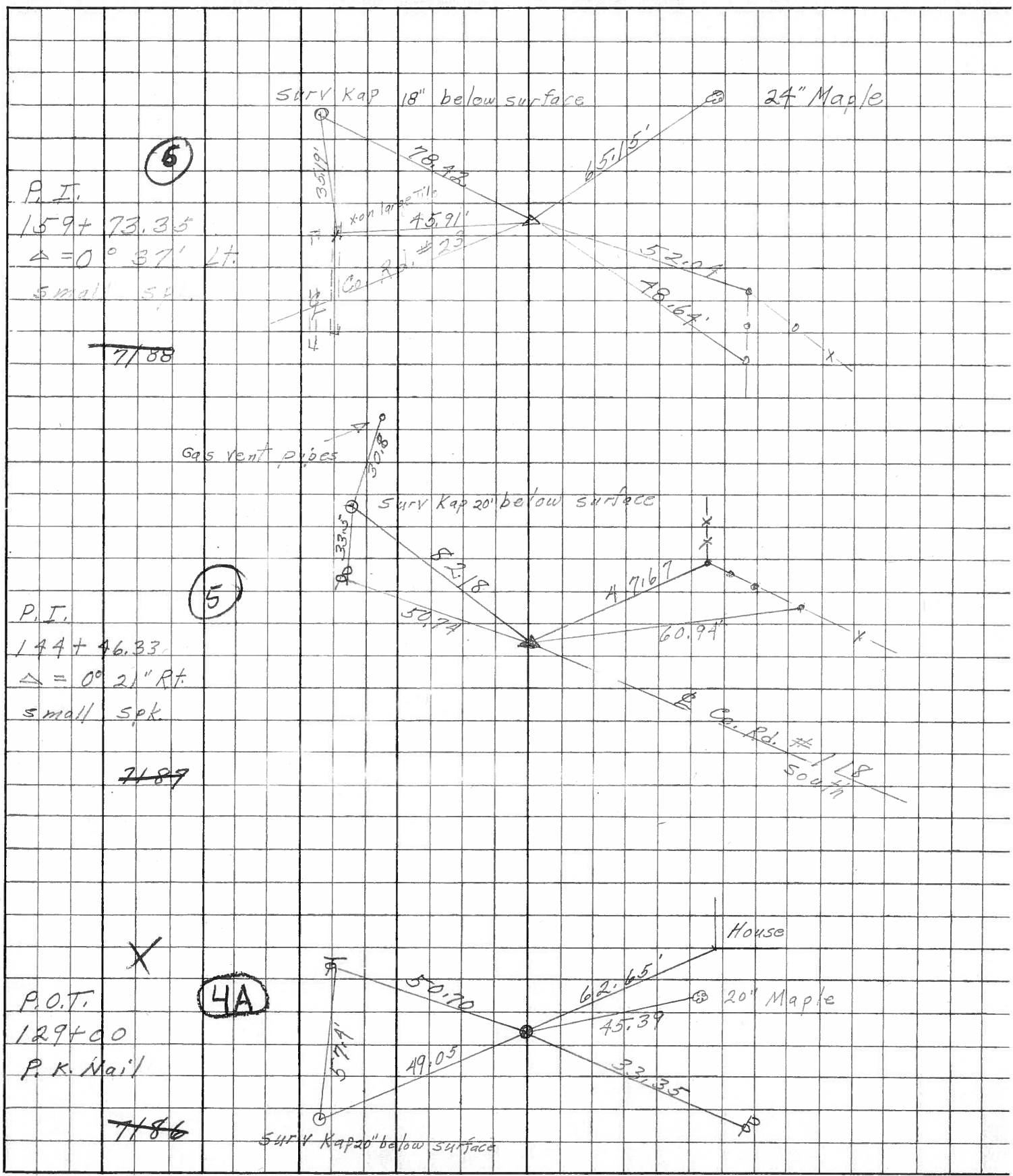
30\"/>

sec. 19  
sec. 30

S.R. # 12

PERSONNEL TITLE PERSONNEL TITLE COUNTY Sandusky DATE Jan. 1968  
Schneider \_\_\_\_\_  
Mosser \_\_\_\_\_ S. R. 12 WEATHER \_\_\_\_\_  
Barbour \_\_\_\_\_  
Potts \_\_\_\_\_ SEC. 1.02 TEMP. \_\_\_\_\_

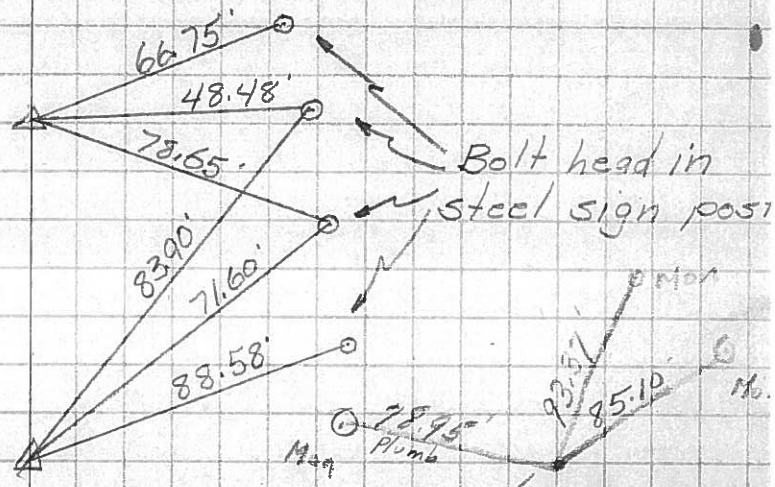
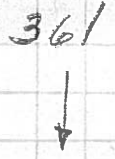
DESCRIPTION Ties for control po's JOB NO. \_\_\_\_\_



PERSONNEL	TITLE	PERSONNEL	TITLE
COUNTY Sandusky			
DATE 4-22-57			
S. R. #12			
WEATHER			
SEC.			
TEMP.			
DESCRIPTION	Relocation	Control point ties	JOB NO.
	LEFT	CENTER LINE	RIGHT

P.I. Sta. 106+82.86  
 $\Delta = S.B. \#12$

4AA



P.I. Sta. 106+36.78  
 $\Delta = 140-15' Lt.$

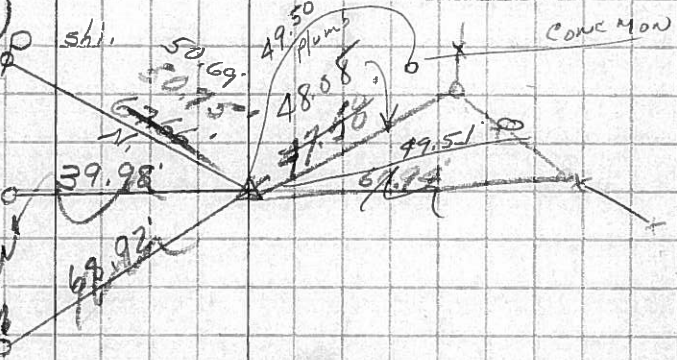
4

SPK on Top  
 P.K. crusher atop R.R. SPK

5

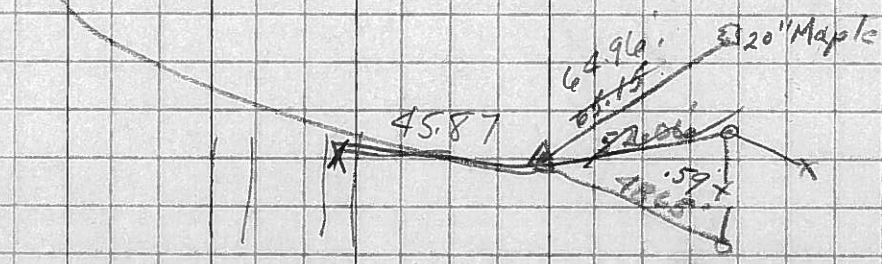
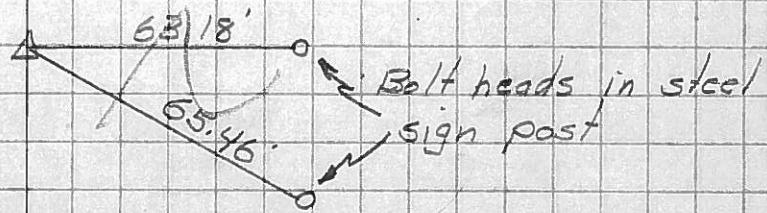
P.I. Sta. 144+46.33  
 $\Delta = 0-21' Rt.$   
 Co. RL #118

Bolt head in steel sign post



Spk on Top  
 P.I. Sta. 159+73.35  
 $\Delta = 0-37' Lt.$   
 Co. #23

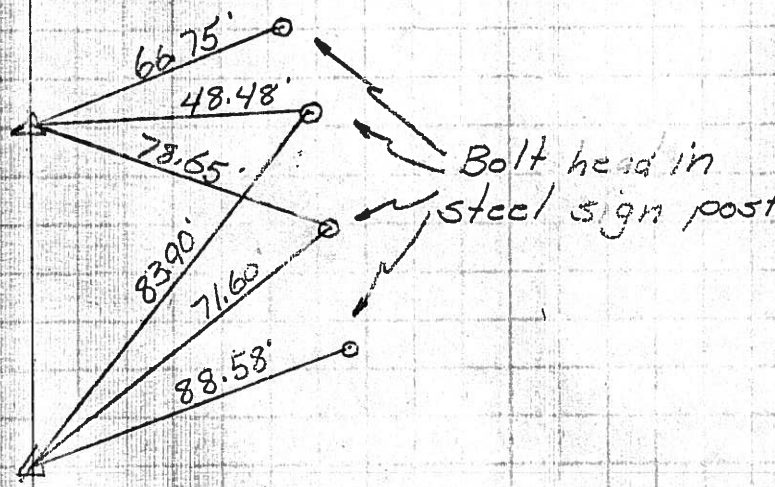
6





PERSONNEL	TITLE	PERSONNEL	TITLE	COUNTY	DATE
				<u>Sandusky</u>	<u>4-22-57</u>
				S. R. <u>#12</u>	WEATHER
				SEC.	TEMP.
DESCRIPTION	<u>Relocation</u>	<u>Control point ties</u>			JOB NO.
	LEFT	CENTER LINE	RIGHT		

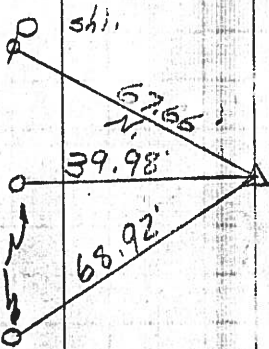
P.I. Sta. 106+82.86  
 $\Delta = 52^{\circ} 12'$   
 $\frac{36}{78}$   
 $\frac{46}{08}$



P.I. Sta. 106+36.78  
 $\Delta = 14^{\circ} 52'$

P.I. Sta. 44+5.33  
 $\Delta = 0^{\circ} 2' R.$

Bolt head in steel sign post



P.I. Sta. 159+73.35  
 $\Delta = 0^{\circ} 37' L.$

