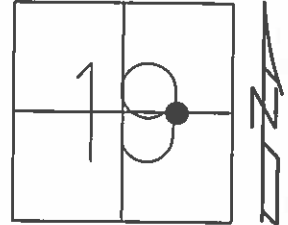


O.D.O.T. DISTRICT 2 SURVEY OFFICE (USE ONLY)

PERSONNEL _____ REFERENCE NO. 7 SHEET 22 OF 24
 NOTES NUHFUR DATE 5-7-14 ROUTE SR 12
 H.C. O'DONNELL WEATHER SUNNY COUNTY SANDUSKY
 R.C. LEU TEMP. 80°F TOWNSHIP BALLVILLE
 _____ SECTION 19
 _____ T 4 N R 15 E

TYPE MONUMENT 1" IPIN
~~ON SURFACE~~ - BELOW 1"
 LEFT - ☉ PAV'T - ~~RIGHT~~ 109.64'
9' LT TO LT EDGE PAVEMENT
 S.L.M. 197+43.43

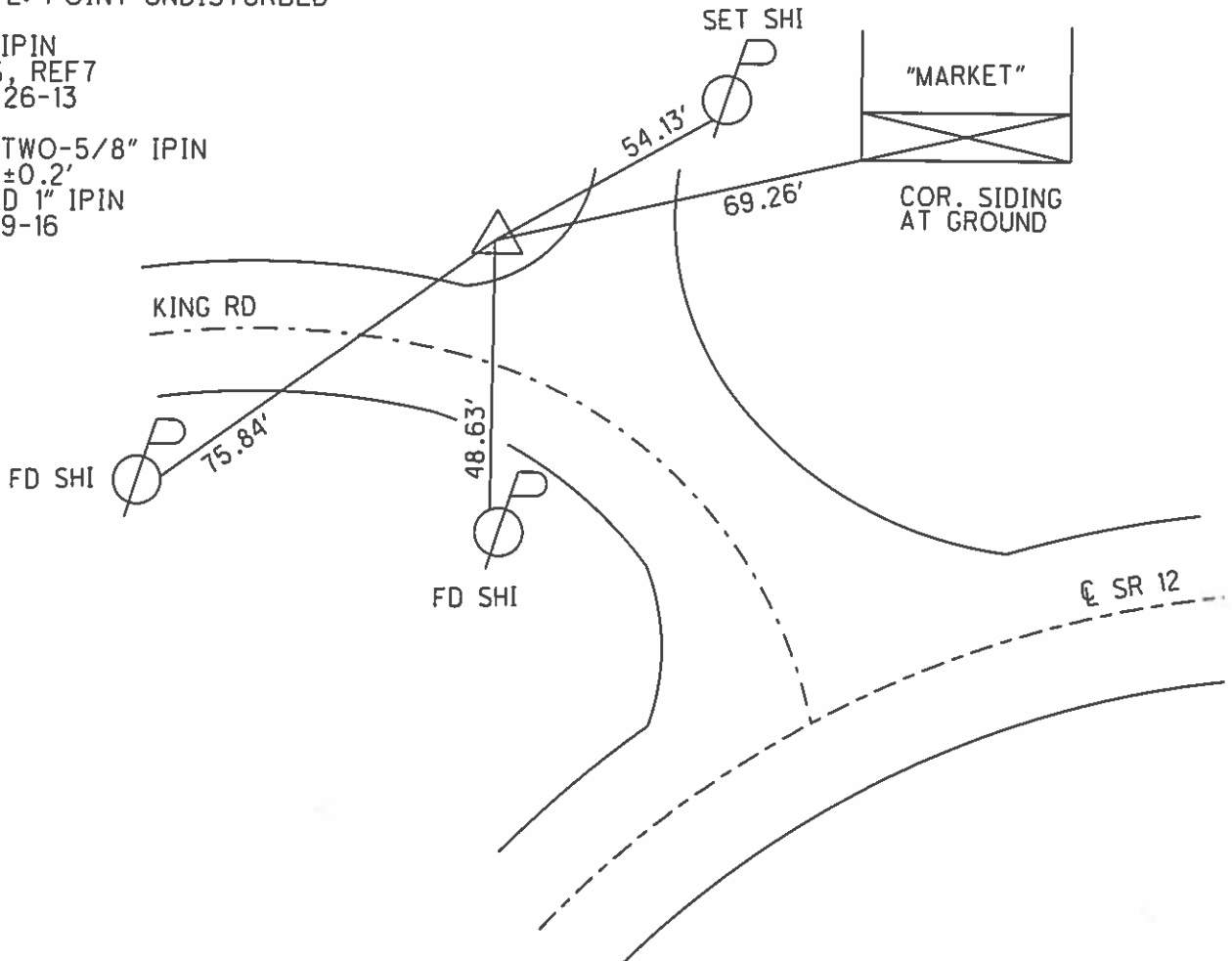


Grid: Northing: 592697.2938 Easting: 1783186.296

RECORD:
 P.I. $\Delta=45^{\circ}27'$ RT
 STA 197+77.18

PREVENTIVE MAINTENANCE
 MICROSURFACED 2000
 EXISTING POINT UNCOVERED
 DATE: POINT UNDISTURBED

FD IPIN
 GPS, REF7
 03-26-13
 FD TWO-5/8" IPIN
 NW $\pm 0.2'$
 USED 1" IPIN
 9-29-16



O.D.O.T. DISTRICT 2 SURVEY OFFICE

PERSONNEL _____

REFERENCE NO. 7

SHEET 18 OF _____

NOTES CHANNEY

H.C. RIPPLE

R.C. BARBOUR

GEYMAN

DATE 7-15-94

WEATHER FAIR

TEMP. +80

ROUTE S.R. 12

COUNTY SANDUSKY

TOWNSHIP BALLVILLE

SECTION 19

T 4 N R 15 E

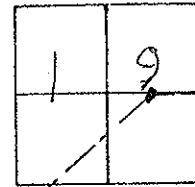
TYPE MONUMENT 1" IRON PIN

~~ON SURFACE~~ - BELOW 1 inch

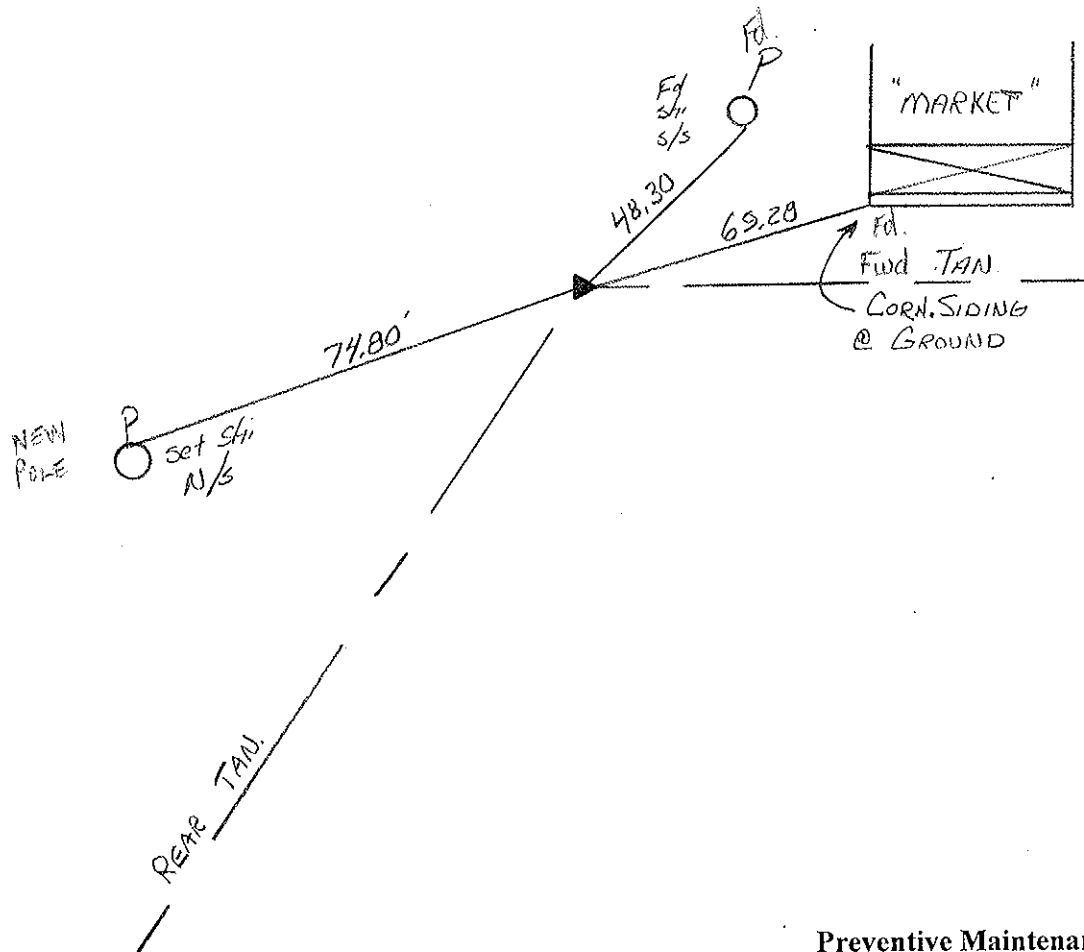
LEFT - C PAV'T. - RIGHT 1030' Lt

91' Lt TO Lt EDGE PAVEMENT

S.L.M. ± 198+70



RECORD P.I.
 $\Delta = 45^{\circ}.27'$ Rt
 Sta 197+77.18



Preventive Maintenance
 Microsurfaced 2000
 Existing Point Uncovered
 Date POINT UNDISTURBED

County Sandusky S.R. #12

Date 8/27/84 - Drawn 9/17/84

Township Ballville

Weather sunny

Section 19

Temp. 82°

T4N, R15E

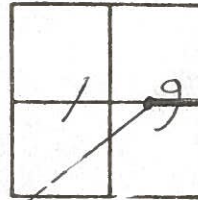
Personnel Cronin

Ripple

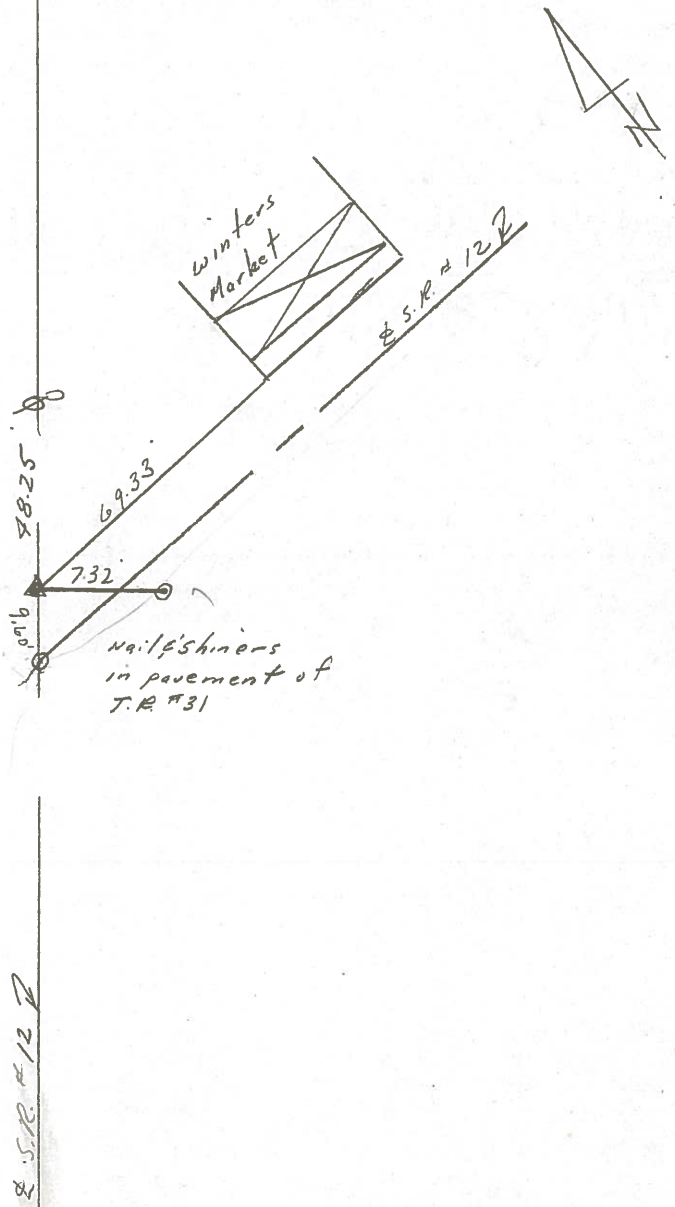
Geyman

Barbour

7



P.I. - Δ = 45° 27' Rt.
197 + 77.18
Fd. 1" I. Pin 1" below surface



County SANDUSKY S.R. 12

Date 6/13/79

Township BALLVILLE

Weather SUNNY

Section 19

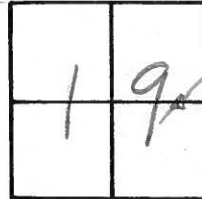
Temp. 78°

T 1/2 N, R 1/2 E

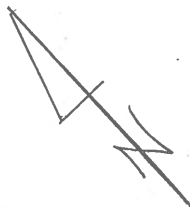
Personnel Cronin

Ripple

Geyman



①



? I. - A = 45° 27' Rt.

197+77.18

d. 1" I. rod at surface

