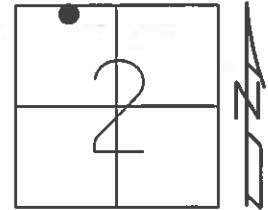


O.D.O.T. DISTRICT 2 SURVEY OFFICE (USE ONLY)

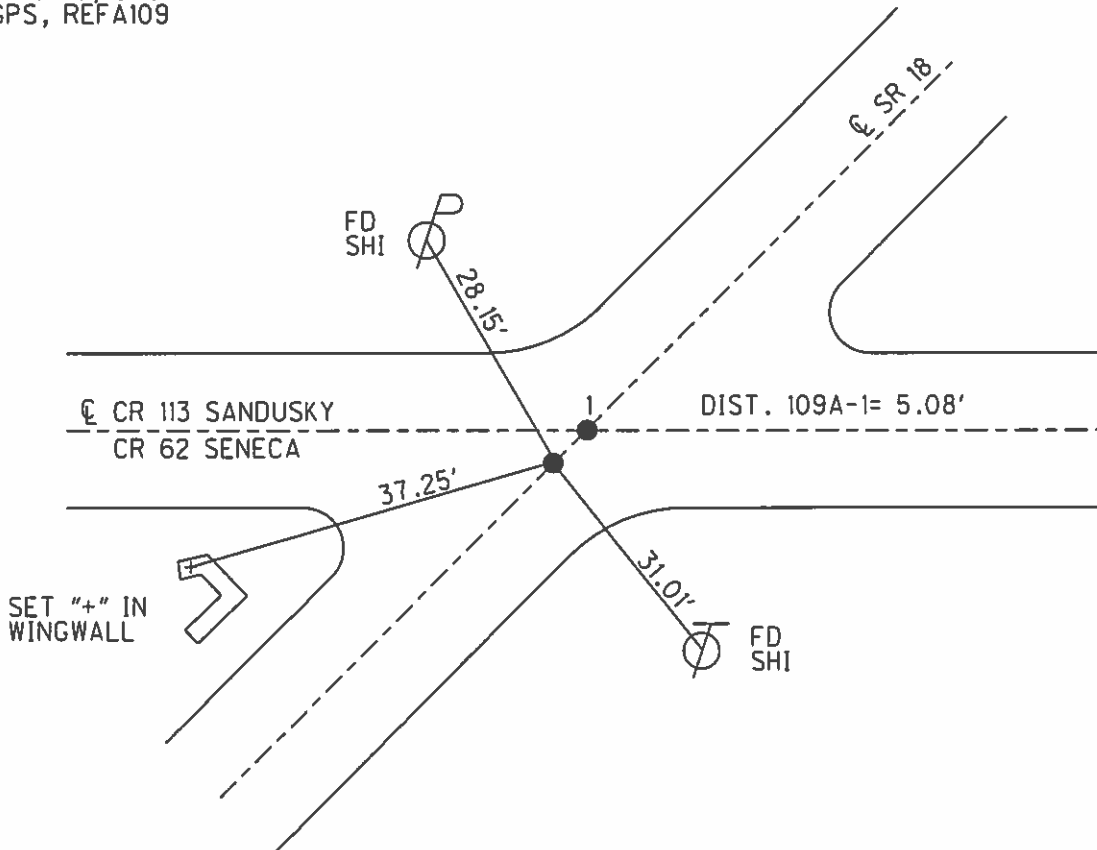
PERSONNEL _____ REFERENCE NO. 109 A SHEET 18 OF 18
 NOTES RHOADES DATE 4/16/15 ROUTE SR 18
 H.C. WESTFALL WEATHER OVERCAST/WINDY COUNTY SENECA
 R.C. O'DONNELL TEMP. 60° TOWNSHIP THOMPSON
 _____ SECTION 2
 _____ T 3 N R 17 E

TYPE MONUMENT P.K./WASHER
 ON SURFACE - ~~BELOW~~ ON _____
 LEFT - ☉ PAV'T - ~~RIGHT~~ 1.5'
 _____ TO _____ EDGE PAVEMENT
 S.L.M. 1835+73.74



Grid: Northing: 579095.396 Easting: 1866161.202

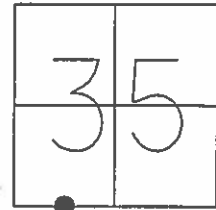
PREVIOUS MONUMENTS:
 R.R.SPIKE
 R.R.SPIKE
 SET P.K./WASHER
 9/16/91, CHENEY
 FD P.K./WASHER
 8/1/02, MB
 4/16/15, JFO
 GPS, REFA109



O.D.O.T. DISTRICT 2 SURVEY OFFICE (USE ONLY)

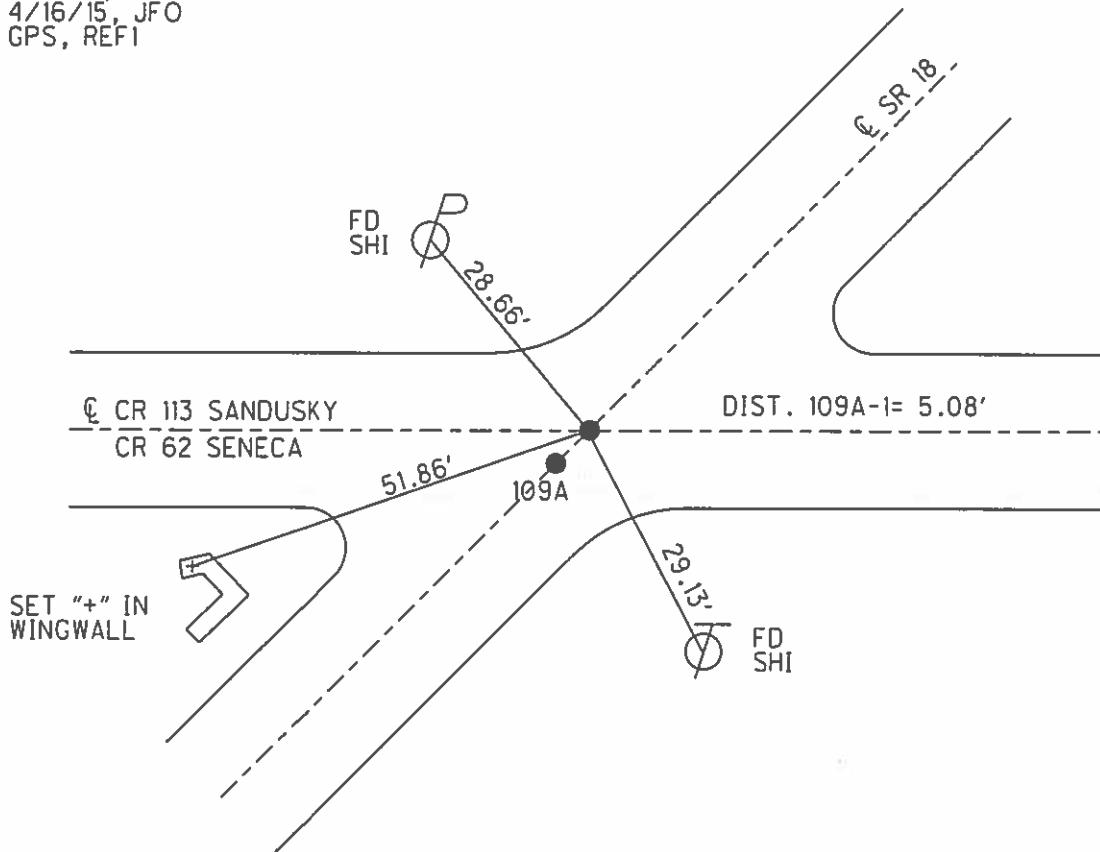
PERSONNEL _____ REFERENCE NO. 1 SHEET 1 OF 5
 NOTES RHOADES DATE 4/16/15 ROUTE SR 18
 H.C. WESTFALL WEATHER OVERCAST/WINDY COUNTY SANDUSKY
 R.C. O'DONNELL TEMP. 60° TOWNSHIP YORK
 _____ SECTION 35
 _____ T 4 N R 17 E

TYPE MONUMENT P.K./WASHER
 ON SURFACE - ~~BELOW~~ ON _____
 LEFT - ☉ PAV'T - ~~RIGHT~~ 1.5'
 _____ TO _____ EDGE PAVEMENT
 S.L.M. 0+00, (1835+78.80 - SR 18)



Grid: Northing: 579098.721 Easting: 1866165.020

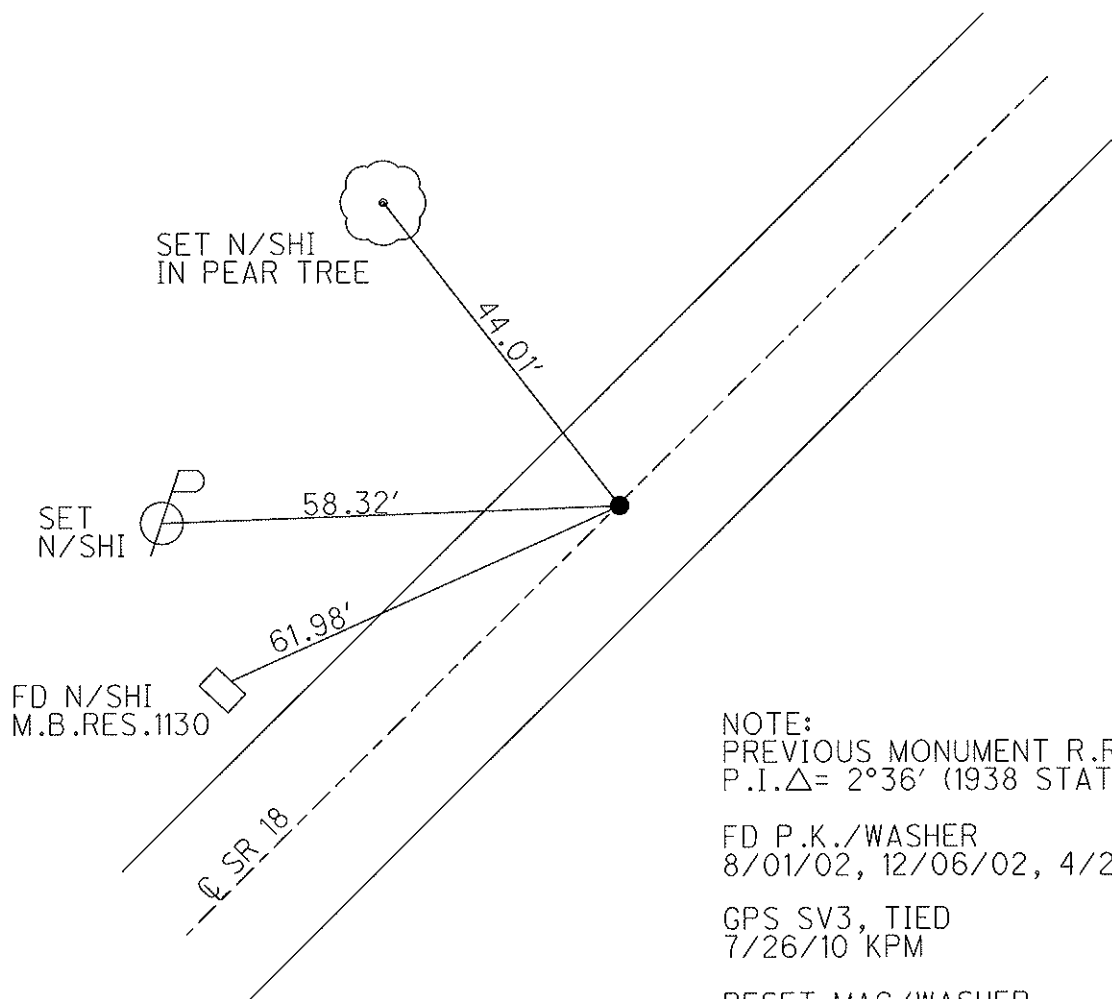
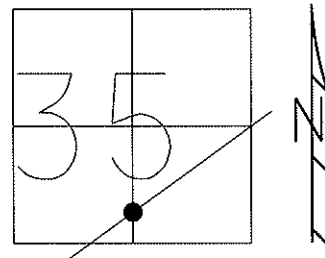
PREVIOUS MONUMENTS:
 R.R.SPIKE
 R.R.SPIKE
 IRON PIN
 SET P.K./WASHER
 9/16/91, CHENEY
 FD P.K./WASHER
 8/1/02, MB
 4/16/15, JFO
 GPS, REF1



O.D.O.T. DISTRICT 2 SURVEY OFFICE

PERSONNEL	REFERENCE NO. <u>2</u>	SHEET <u>3</u> OF <u>8</u>
NOTES <u>MOSER</u>	DATE <u>7/26/10</u>	ROUTE <u>SR 18</u>
H.C. <u>GOLDBERG</u>	WEATHER <u>CLEAR</u>	COUNTY <u>SANDUSKY</u>
R.C. <u>HARBAUGH</u>	TEMP. <u>85°</u>	TOWNSHIP <u>YORK</u>
		SECTION <u>35</u>
		T <u>4</u> N R <u>17</u> E

TYPE MONUMENT P.K./WASHER
 ON SURFACE - BELOW ON
 LEFT - C PAV'T - RIGHT 3.0'
6.7' TO LT EDGE PAVEMENT
 S.L.M. 25+08
 Grid: Northing: 580715.808 Easting: 1868082.008



NOTE:
 PREVIOUS MONUMENT R.R.SPIKE
 P.I.Δ= 2°36' (1938 STATE HWY. PLAN)

FD P.K./WASHER
 8/01/02, 12/06/02, 4/22/09

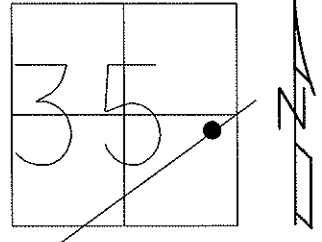
GPS SV3, TIED
 7/26/10 KPM

RESET MAG/WASHER
 GPS FIN3
 10/15/10 KPM

O.D.O.T. DISTRICT 2 SURVEY OFFICE

PERSONNEL	REFERENCE NO. <u>3</u>	SHEET <u>4</u> OF <u>8</u>
NOTES <u>MOSER</u>	DATE <u>7/26/10</u>	ROUTE <u>SR 18</u>
H.C. <u>GOLDBERG</u>	WEATHER <u>CLEAR</u>	COUNTY <u>SANDUSKY</u>
R.C. <u>HARBAUGH</u>	TEMP. <u>85°</u>	TOWNSHIP <u>YORK</u>
		SECTION <u>35</u>
		T <u>4</u> N R <u>17</u> E

TYPE MONUMENT P.K./WASHER
 ON SURFACE - ~~BELOW~~ ON _____
 LEFT - C PAV'T - RIGHT 0.7'
9.6' TO LT EDGE PAVEMENT
 S.L.M. 41+37

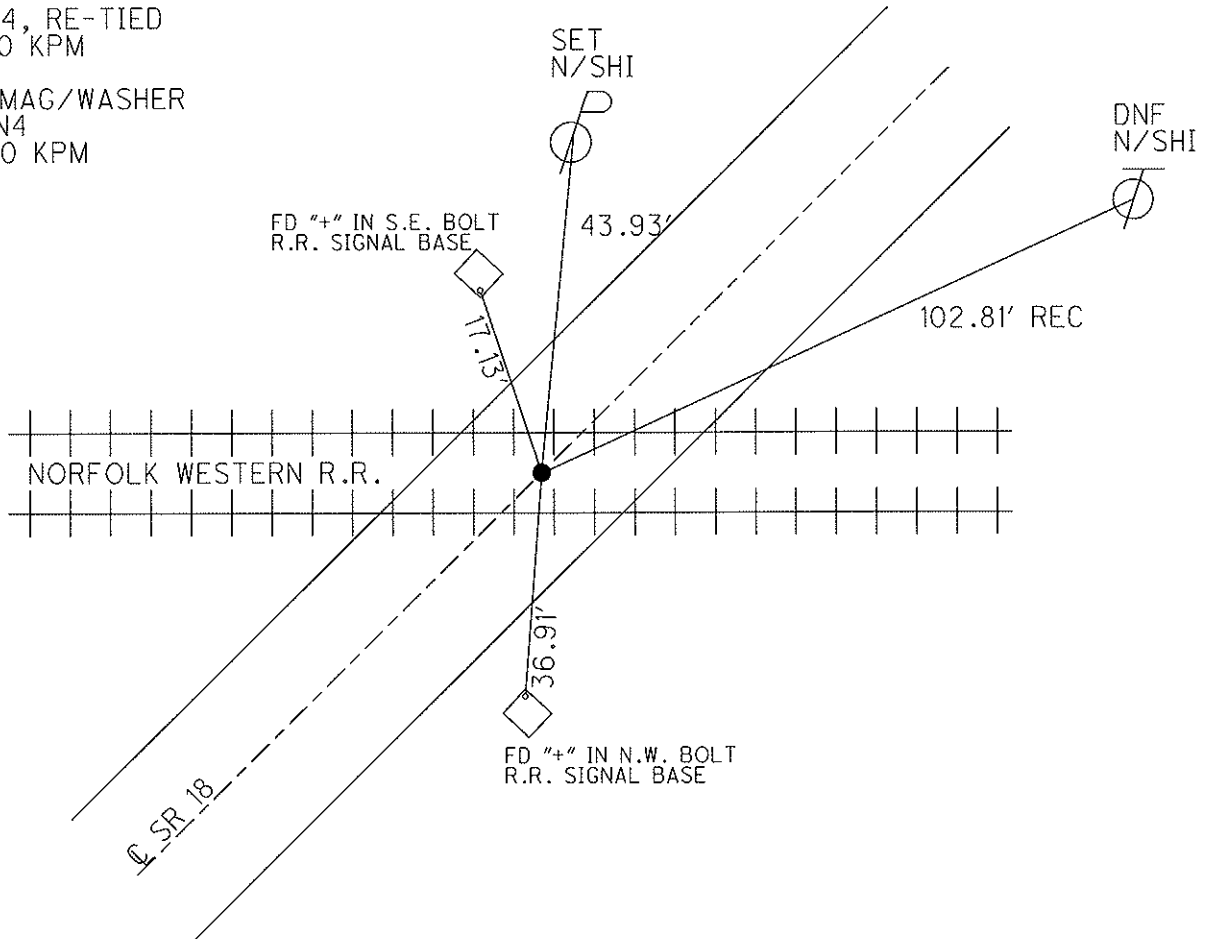


Grid: Northing: 581708.598 Easting: 1869373.554

NOTE:
 PREVIOUS MONUMENT MINE SPIKE
 P.I. Δ = 0°28'RT.
 (1938 PLAN, Δ = 0°29'RT.)

GPS SV4, RE-TIED
 7/26/10 KPM

RESET MAG/WASHER
 GPS FIN4
 10/15/10 KPM



O.D.O.T. DISTRICT 2 SURVEY OFFICE

PERSONNEL

REFERENCE NO. 4

SHEET 5 OF 8

NOTES MOSER

DATE 7/26/10

ROUTE SR 18

H.C. GOLDBERG

WEATHER CLEAR

COUNTY SANDUSKY

R.C. HARBAUGH

TEMP. 85°

TOWNSHIP YORK

SECTION 35

T 4 N R 17 E

TYPE MONUMENT P.K./WASHER

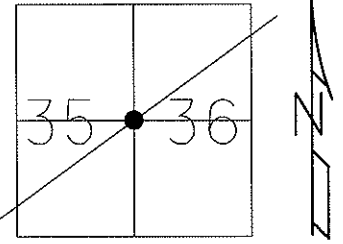
ON SURFACE - ~~BELOW~~ ON

~~LEFT~~ - C PAV'T - RIGHT 0.02'

TO EDGE PAVEMENT

S.L.M. 45+65

Grid: Northing: 581967.187 Easting: 1869715.501

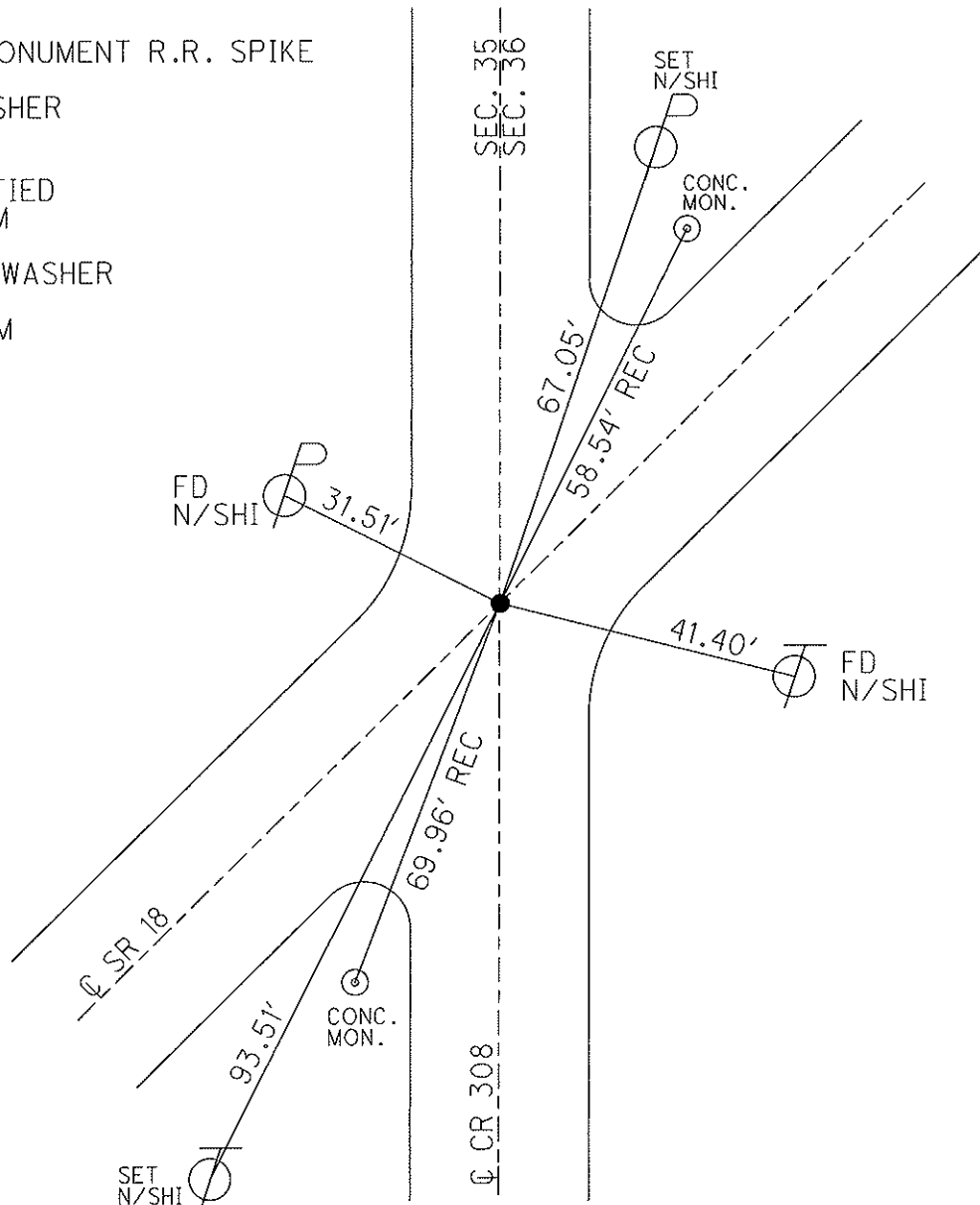


NOTE:
PREVIOUS MONUMENT R.R. SPIKE

FD P.K./WASHER
4/22/09

GPS SVA4, TIED
7/26/10 KPM

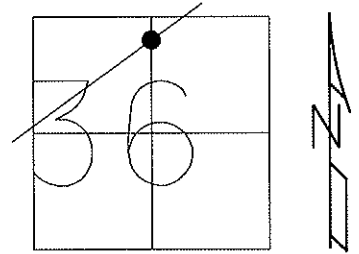
RESET MAG/WASHER
GPS FIN5
10/15/10 KPM



O.D.O.T. DISTRICT 2 SURVEY OFFICE

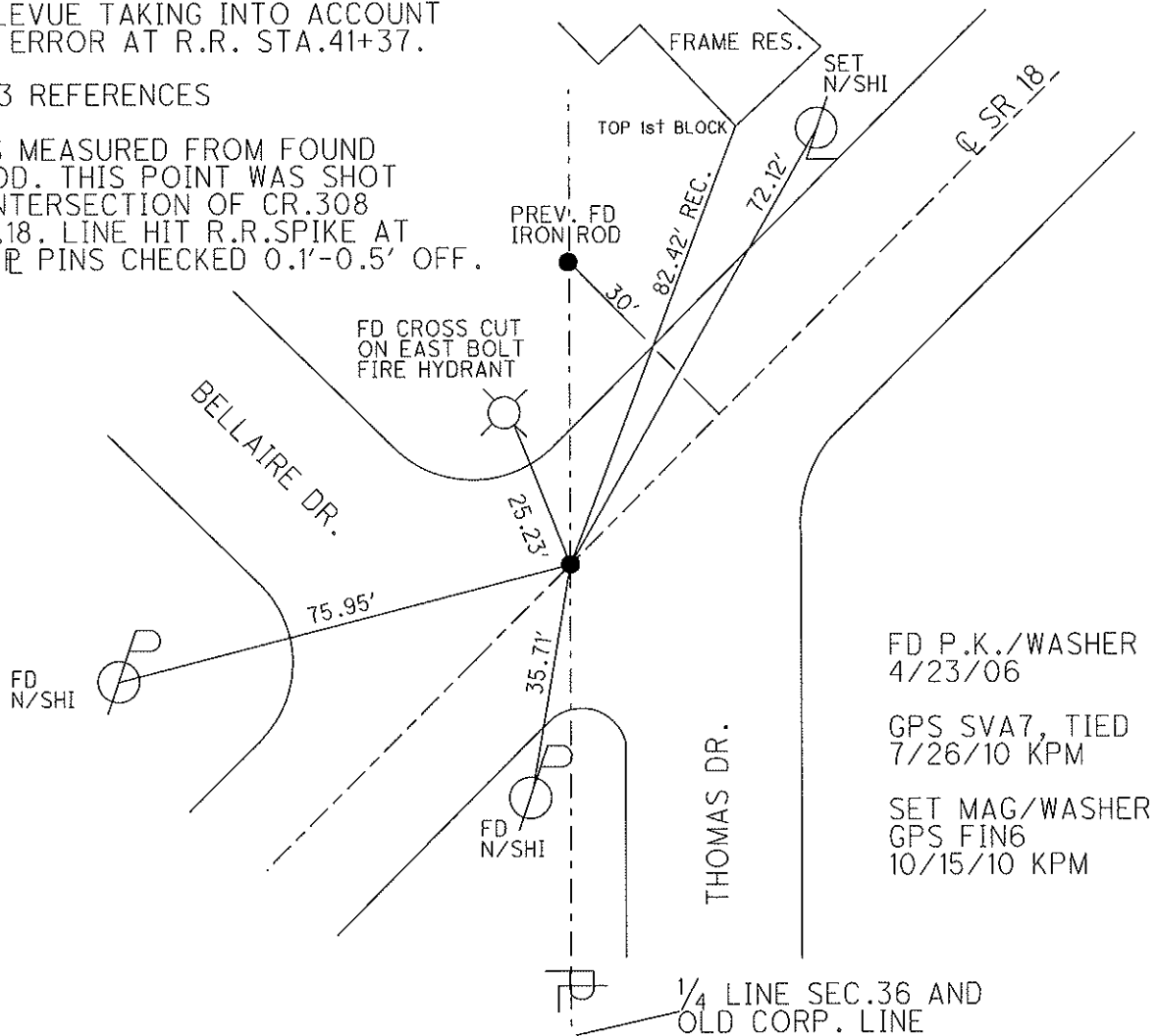
PERSONNEL	REFERENCE NO. <u>5</u>	SHEET <u>6</u> OF <u>8</u>
NOTES <u>MOSE</u>	DATE <u>7/26/10</u>	ROUTE <u>SR 18</u>
H.C. <u>GOLDBERG</u>	WEATHER <u>CLEAR</u>	COUNTY <u>SANDUSKY</u>
R.C. <u>HARBAUGH</u>	TEMP. <u>85°</u>	TOWNSHIP <u>YORK</u>
		SECTION <u>36</u>
		T <u>4</u> N R <u>17</u> E

TYPE MONUMENT P.K./WASHER
 ON SURFACE - ~~BELOW~~ ON
 LEFT - C PAV'T - ~~RIGHT~~ 0.5'
9.1' TO LT EDGE PAVEMENT
 S.L.M. 57+74
 Grid: Northing: 582696.068 Easting: 1870679.669



NOTE:
 PREVIOUS MONUMENT R.R.SPIKE
 1938 S.H. PLANS WERE USED TO
 RE-ESTABLISH C FROM SEN/SAN
 CO. LINE N.E. TO OLD CORP. LINE
 OF BELLEVUE TAKING INTO ACCOUNT
 AN 8.5' ERROR AT R.R. STA.41+37.

FEB.1973 REFERENCES
 NOTE:
 30' WAS MEASURED FROM FOUND
 IRON ROD. THIS POINT WAS SHOT
 FROM INTERSECTION OF CR.308
 AND SR.18. LINE HIT R.R.SPIKE AT
 54+74. P PINS CHECKED 0.1'-0.5' OFF.



FD P.K./WASHER
 4/23/06

GPS SVA7, TIED
 7/26/10 KPM

SET MAG/WASHER
 GPS FIN6
 10/15/10 KPM

O.D.O.T. DISTRICT 2 SURVEY OFFICE

PERSONNEL

REFERENCE NO. 5-A

SHEET 7 OF 8

NOTES MOSER

DATE 7/26/10

ROUTE SR 18

H.C. GOLDBERG

WEATHER CLEAR

COUNTY SANDUSKY

R.C. HARBAUGH

TEMP. 85°

TOWNSHIP YORK

SECTION 36

T 4 N R 17 E

TYPE MONUMENT SET P.K./WASHER

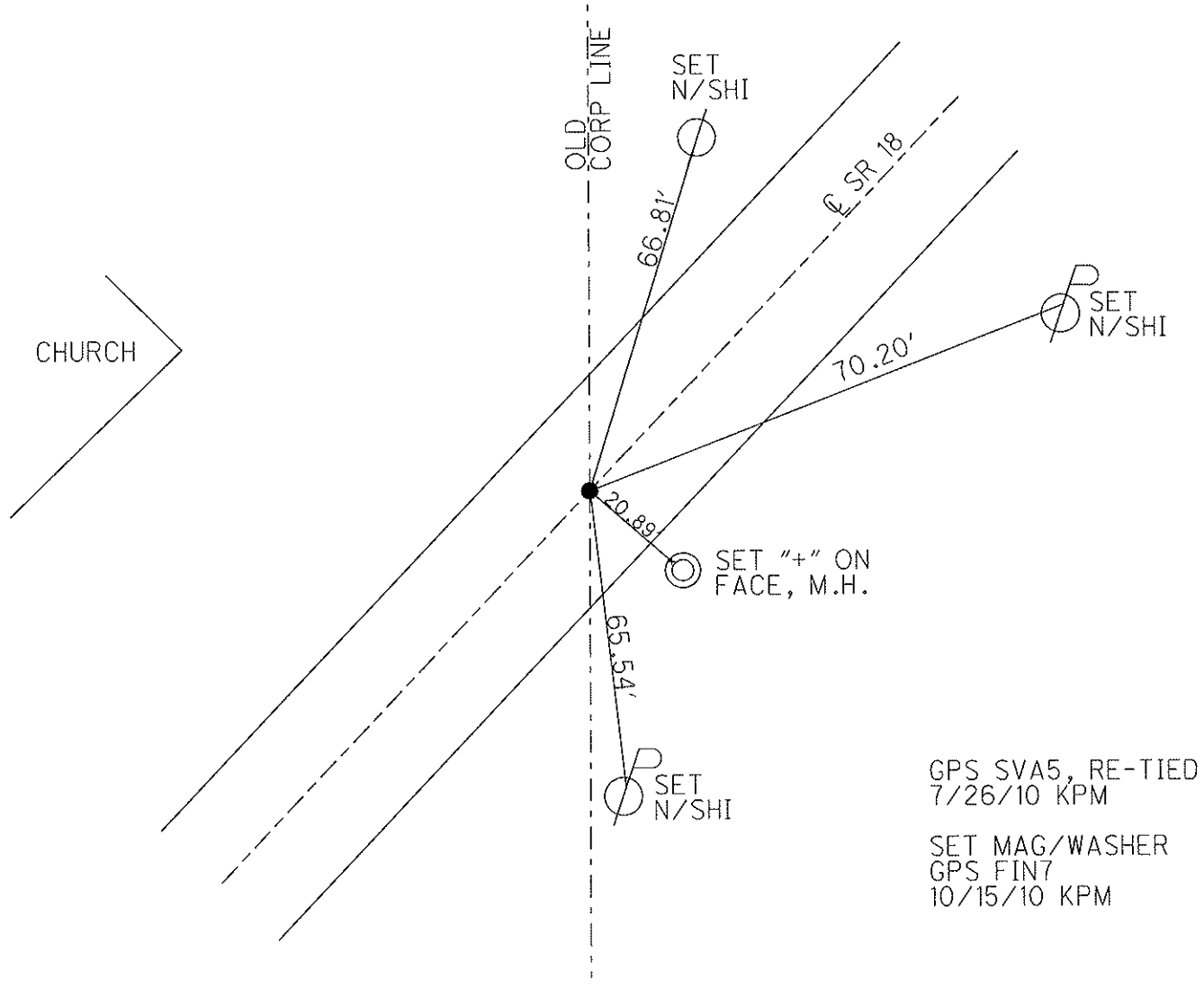
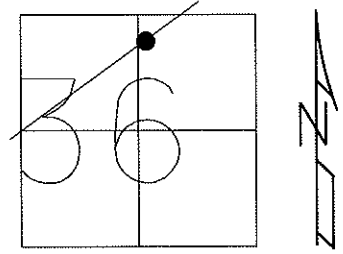
ON SURFACE - ~~BELOW~~ ON

LEFT - C PAV'T - RIGHT ON

15.6' TO RT EDGE PAVEMENT

S.L.M. 62+28.01

Grid: Northing: 582969.756 Easting: 1871041.578

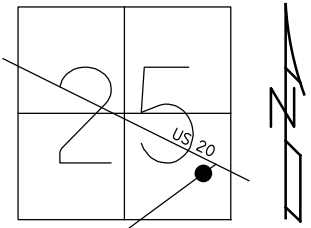


GPS SVA5, RE-TIED
7/26/10 KPM
SET MAG/WASHER
GPS FIN7
10/15/10 KPM

O.D.O.T. DISTRICT 2 SURVEY OFFICE (USE ONLY)

PERSONNEL	REFERENCE NO.	<u>5B</u>	SHEET	<u>7</u>	OF	<u>9</u>
NOTES	<u>MOSER</u>	DATE	<u>7/26/10</u>	ROUTE	<u>SR 18</u>	
H.C.	<u>GOLDBERG</u>	WEATHER	<u>CLEAR</u>	COUNTY	<u>SANDUSKY</u>	
R.C.	<u>HARBAUGH</u>	TEMP.	<u>85°</u>	TOWNSHIP	<u>YORK</u>	
				SECTION	<u>25</u>	
				T	<u>4</u>	R
					<u>17</u>	<u>E</u>

TYPE MONUMENT LG R.R.SPIKE W/CROSSCUT
 ON SURFACE - ~~BELOW~~ ON
~~LEFT - C PAV'T - RIGHT~~ 1.0'
18.1' TO RT EDGE PAVEMENT
 S.L.M. 102+22



GRID: NORTHING: 585394.289 EASTING: 1874227.442

RECORD:
 FD LG SPIKE W/ CROSSCUT
 GPS SVA6, TIED
 7/26/10, KPM
 SET MAG/WASHER
 GPS FIN8
 10/15/10, KPM

