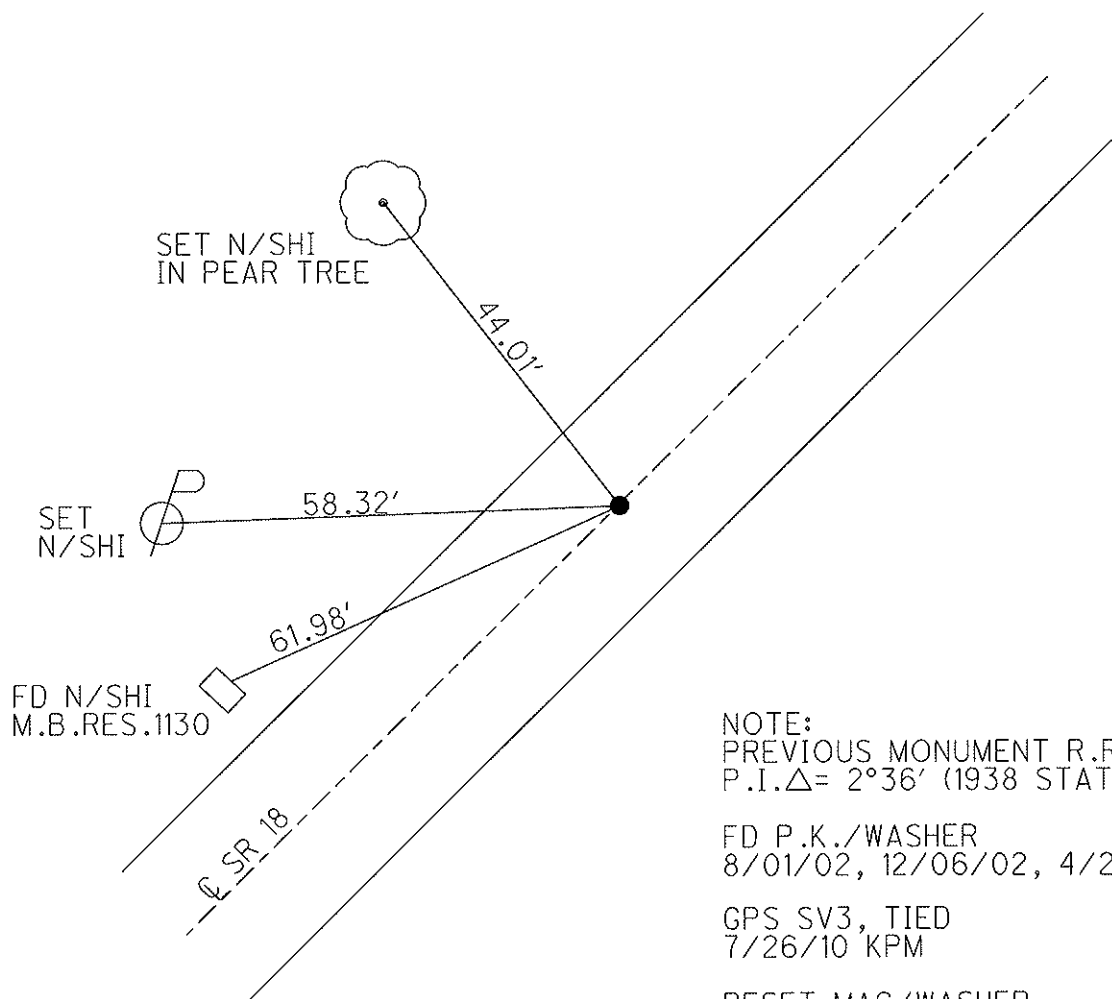
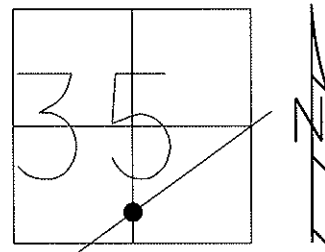


O.D.O.T. DISTRICT 2 SURVEY OFFICE

PERSONNEL	REFERENCE NO. <u>2</u>	SHEET <u>3</u> OF <u>8</u>
NOTES <u>MOSER</u>	DATE <u>7/26/10</u>	ROUTE <u>SR 18</u>
H.C. <u>GOLDBERG</u>	WEATHER <u>CLEAR</u>	COUNTY <u>SANDUSKY</u>
R.C. <u>HARBAUGH</u>	TEMP. <u>85°</u>	TOWNSHIP <u>YORK</u>
		SECTION <u>35</u>
		T <u>4</u> N R <u>17</u> E

TYPE MONUMENT P.K./WASHER
 ON SURFACE - BELOW ON
 LEFT - C PAV'T - RIGHT 3.0'
6.7' TO LT EDGE PAVEMENT
 S.L.M. 25+08
 Grid: Northing: 580715.808 Easting: 1868082.008



NOTE:
 PREVIOUS MONUMENT R.R.SPIKE
 P.I.Δ= 2°36' (1938 STATE HWY. PLAN)
 FD P.K./WASHER
 8/01/02, 12/06/02, 4/22/09
 GPS SV3, TIED
 7/26/10 KPM
 RESET MAG/WASHER
 GPS FIN3
 10/15/10 KPM