

O.D.O.T. DISTRICT 2 SURVEY OFFICE

PERSONNEL

REFERENCE NO. 5-A

SHEET 7 OF 8

NOTES MOSER

DATE 7/26/10

ROUTE SR 18

H.C. GOLDBERG

WEATHER CLEAR

COUNTY SANDUSKY

R.C. HARBAUGH

TEMP. 85°

TOWNSHIP YORK

SECTION 36

T 4 N R 17 E

TYPE MONUMENT SET P.K./WASHER

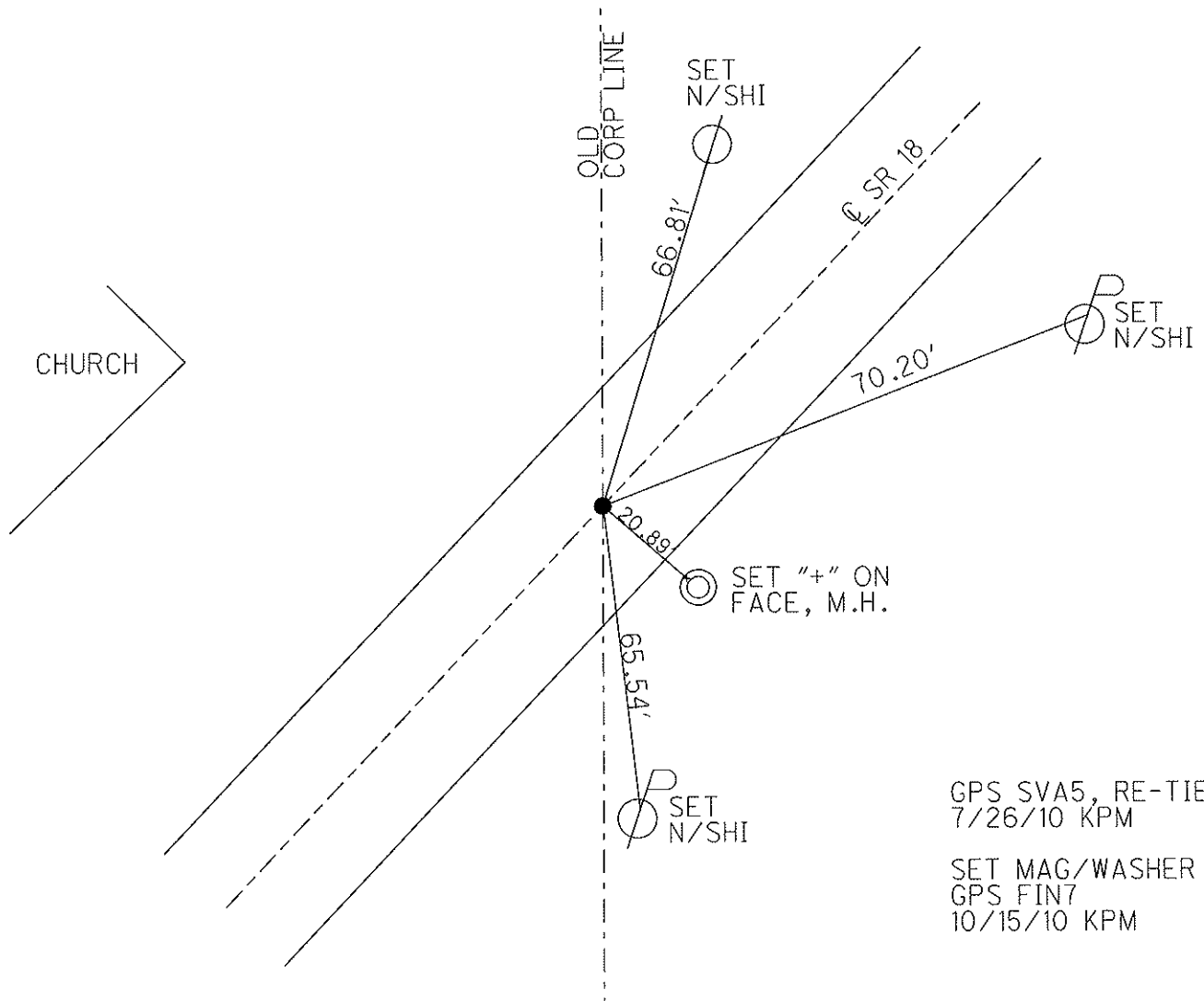
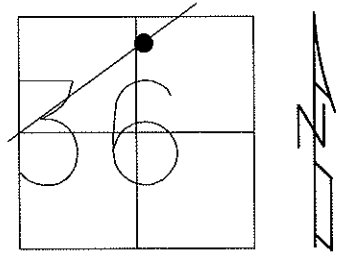
ON SURFACE - ~~BELOW~~ ON

LEFT - C PAV'T - RIGHT ON

15.6' TO RT EDGE PAVEMENT

S.L.M. 62+28.01

Grid: Northing: 582969.756 Easting: 1871041.578



GPS SVA5, RE-TIED
7/26/10 KPM
SET MAG/WASHER
GPS FIN7
10/15/10 KPM