

STATE OF OHIO  
 DEPARTMENT OF HIGHWAYS  
 FREMONT-REPUBLIC ROAD  
 S.H. 515 SECTION GREEN SPRINGS  
 SENECA COUNTY  
 VILLAGE OF GREEN SPRINGS  
 S.H. 515 SECTION GREEN SPRINGS  
 SANDUSKY COUNTY  
 VILLAGE OF GREEN SPRINGS

FED. RD. DIST. NO.	STATE	PROJECT	FISCAL YEAR
10	OHIO		1941

SANDUSKY COUNTY  
 S.H. 515 SEC. GREEN SPRINGS  
 SENECA COUNTY  
 S.H. 515 SEC. GREEN SPRINGS

CONVENTIONAL SIGNS

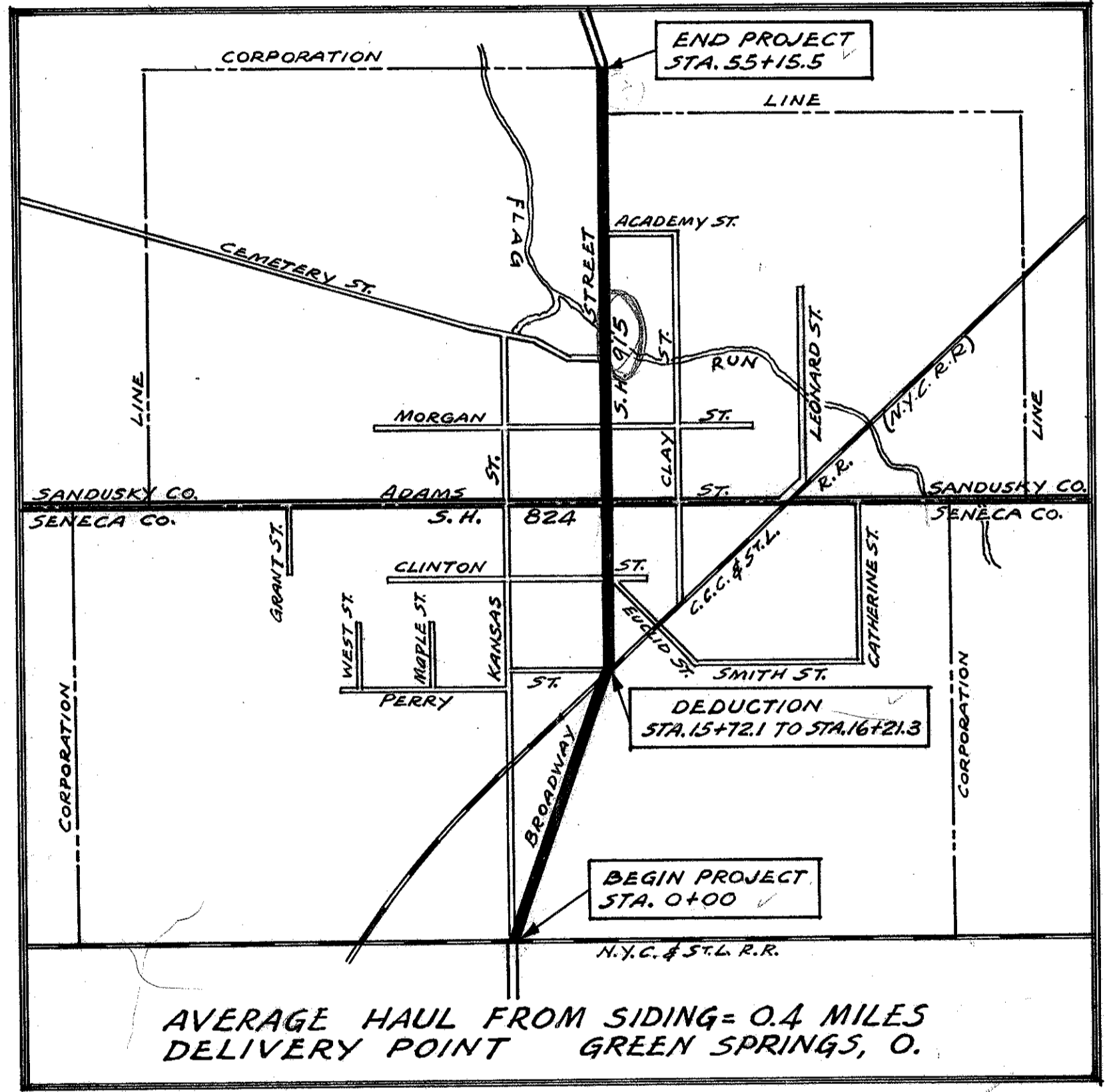
- COUNTY LINE
- TOWNSHIP LINE
- SECTION LINE
- CORPORATION LINE
- PROPERTY LINE
- FENCE LINE
- CENTER LINE
- STEAM RAILROAD
- POLE LINE
- HEDGE
- DRAIN PIPE (NEW)
- DRAIN PIPE (OLD)
- GUARD RAIL (NEW)

INDEX OF SHEETS

TITLE SHEET	SHEET 1
TYPICAL SECTIONS	2, 3
PLAN AND PROFILE	4-8
CROSS SECTION	9
SUMMARY	10
JOINT SHEETS	3-A, 3-B, 3-C

LINE DATA

Beginning of Improvement Sta. 0+00  
 End of Improvement Sta. 55+15.5  
 Gross Length of Improvement = 55.15 Lin. ft.  
 Deduction for Railroad Crossing - Sta. 15+72.1 to Sta. 16+21.3 = 49.2 Lin. ft.  
 Net Length of Improvement = 5,466.3 Lin. ft. or 1.035 Miles



LOCATION PLAN  
 Scale 1" = 800ft.

PORTION TO BE IMPROVED  
 STATE HIGHWAYS  
 OTHER STREETS

SCALES

PLAN 1" = 50'  
 PROFILE HORIZONTAL 1" = 50'  
 PROFILE VERTICAL 1" = 5'  
 CROSS SECTIONS 1" = 5'

The Standard Specifications of the State of Ohio Department of Highways, including changes and Supplemental Specifications listed in the proposal shall govern this improvement.

I hereby approve these plans and declare that the making of this improvement will not require the closing to traffic of the highway and that provisions for the maintenance and safety of traffic will be as set forth on the plans and estimates.

The right of way necessary for this improvement will be provided by the Village of Green Springs.

- Approved T. E. Adams  
Date: 6-6-41 Division Deputy Director
- Approved \_\_\_\_\_  
Date: \_\_\_\_\_ Chief Engineer, Bureau of Maintenance
- Approved \_\_\_\_\_  
Date: \_\_\_\_\_ Chief Engineer, Bureau of Bridges & R.R. Crossings
- Approved Murray P. Shaffer  
Date: 8-13-41 Chief Engineer, Location & Right of Way
- Approved G. P. Logan  
Date: 8-16-41 First Asst. Director & Chief Engineer
- Approved H. B. Stenn  
Date: 8-16-41 Director of Highways

APPROVED FOR THE VILLAGE OF GREEN SPRINGS

Date: Aug 20 1941 Mayor W. A. Young  
 Date: Aug 20 1941 Clerk E. J. Wood

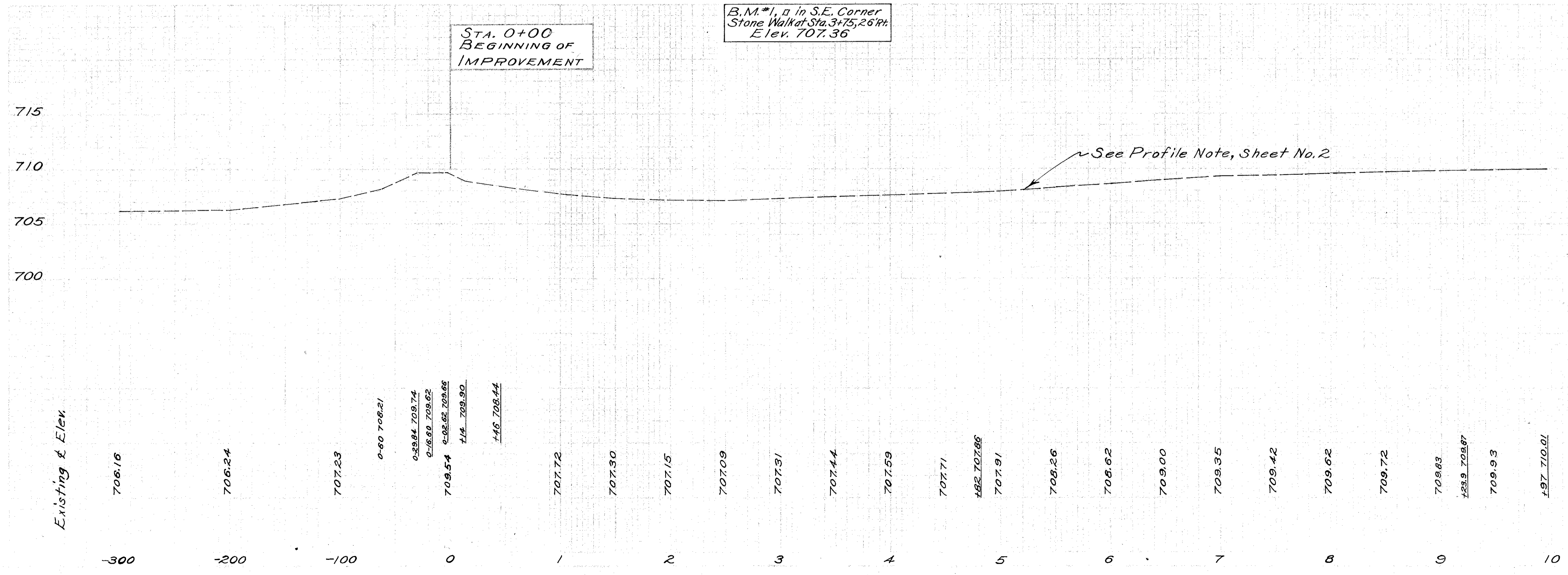
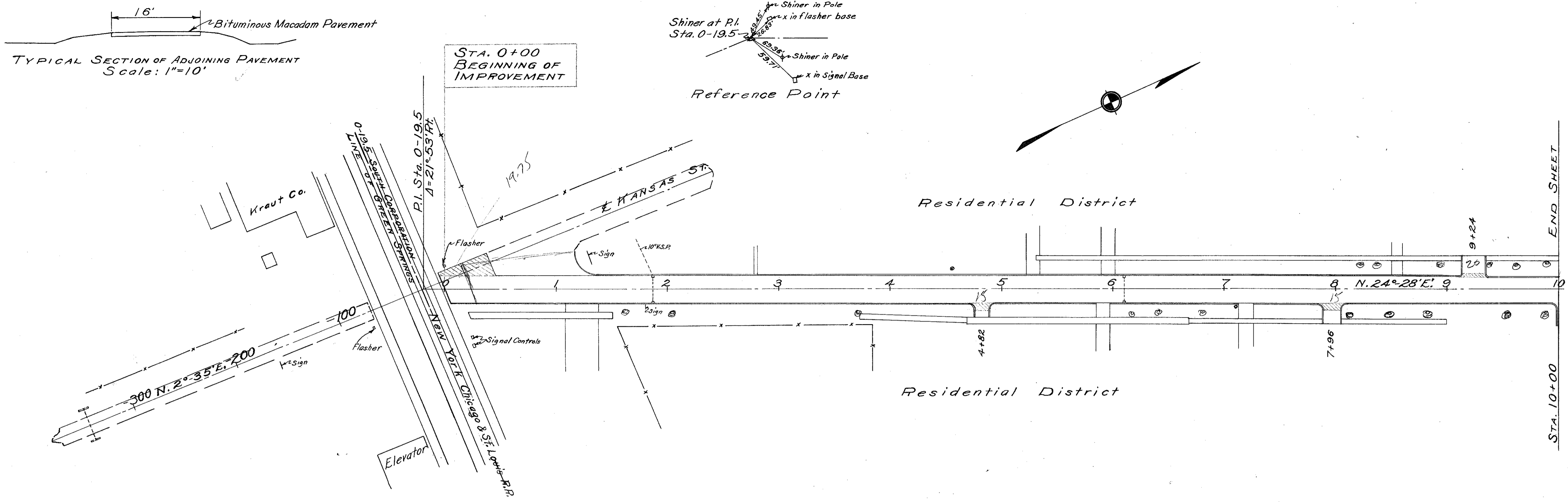
FILE No.	SANDUSKY COUNTY S.H. 515
	SEC. GREEN SPRINGS
	SENECA COUNTY S.H. 515
	SEC. GREEN SPRINGS
	DATE OF LETTING 1941
	CONTRACT No.

STANDARD DRAWINGS	
G-7.07	10-33
I-12	5-6-40
BT 50-70-71E	10-33
T-70-71E	10-33

SUPPLEMENTAL SPECIFICATIONS	
M-110.11	Rev. 9-16-36
M-110.12	Rev 7-25-40
M-110.23	Adpt 3-11-40

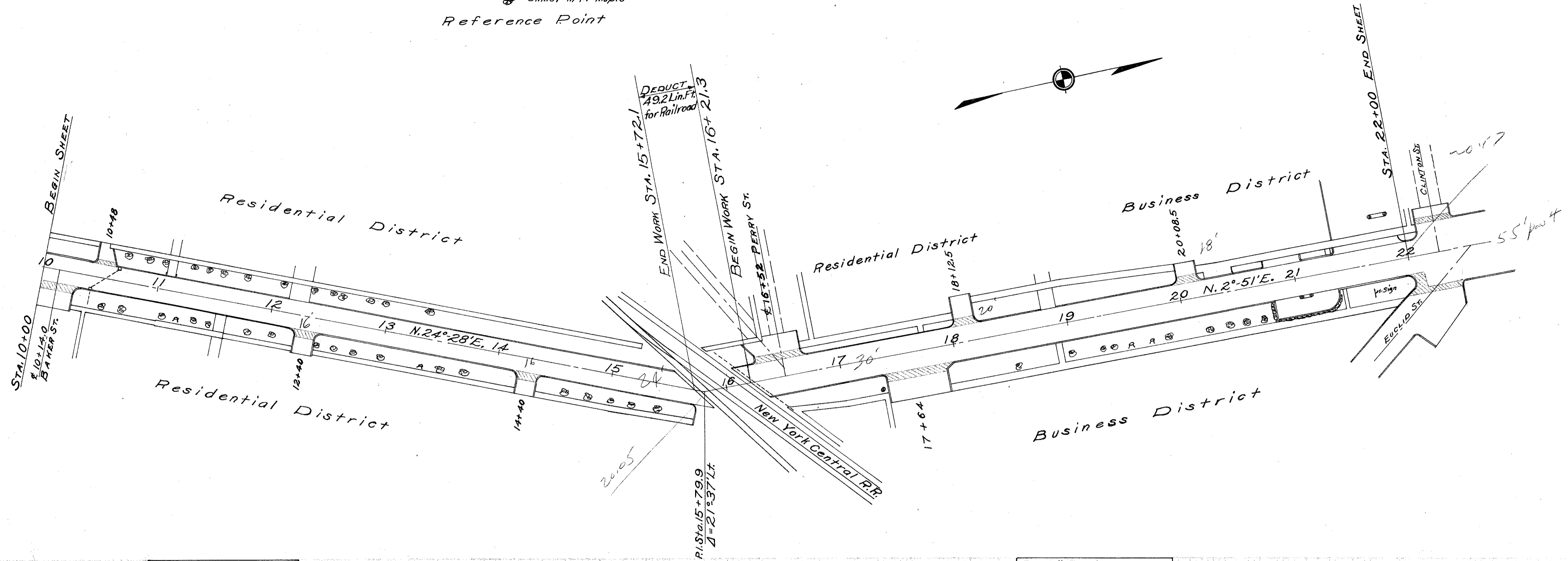
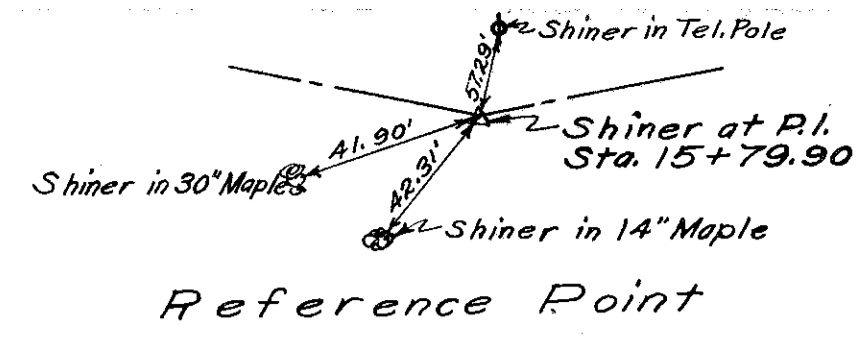
CONSTRUCTION BUREAU  
 JUL 13 1955  
 GROUND PHOTOLAB

10 OHIO 1941 4  
 SANDUSKY COUNTY  
 S.H. 515 SEC. GREEN SPRINGS  
 SENECA COUNTY  
 S.H. 515 SEC. GREEN SPRINGS



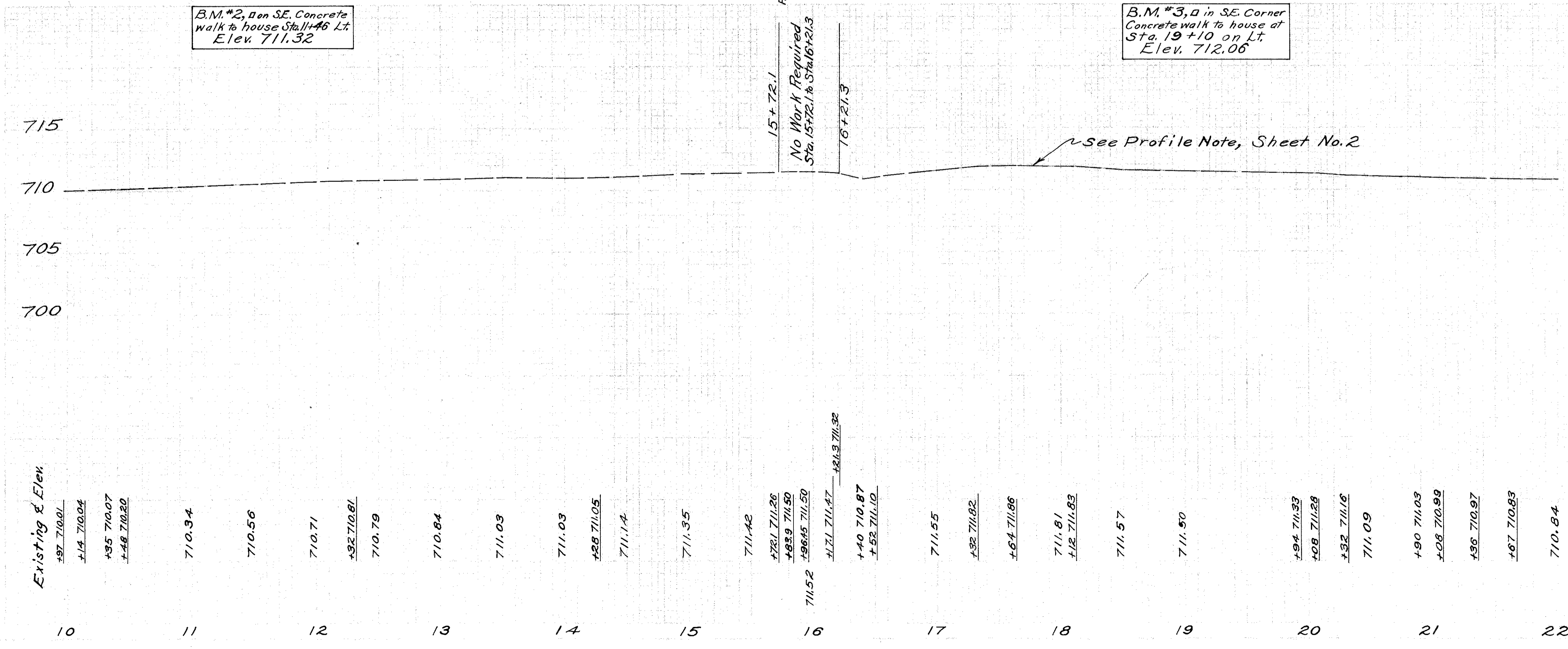


10 OHIO 1941  
SANDUSKY COUNTY  
S.H. 515 SEC. GREEN SPRINGS  
SENECA COUNTY  
S.H. 515 SEC. GREEN SPRINGS



B.M. #2, on SE. Concrete walk to house Sta. 11+46 Lt. Elev. 711.32

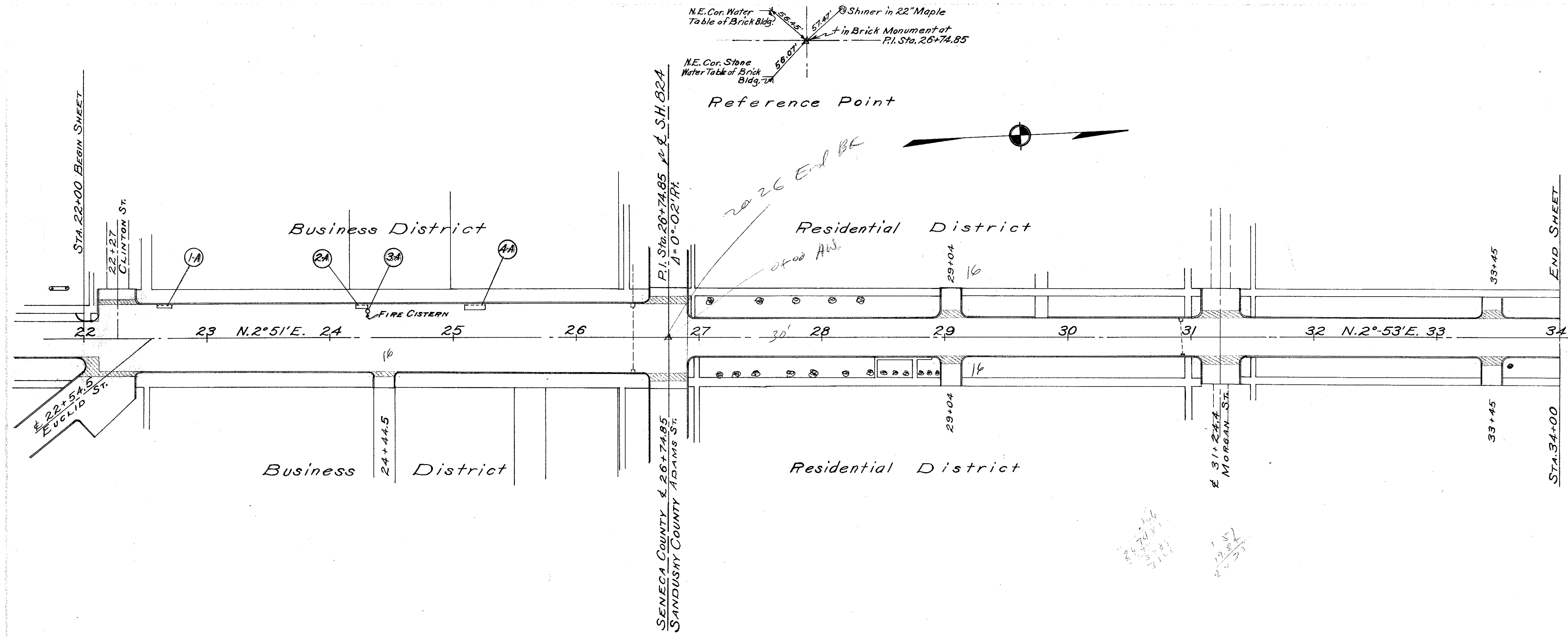
B.M. #3, in SE. Corner Concrete walk to house at Sta. 19+10 on Lt. Elev. 712.06



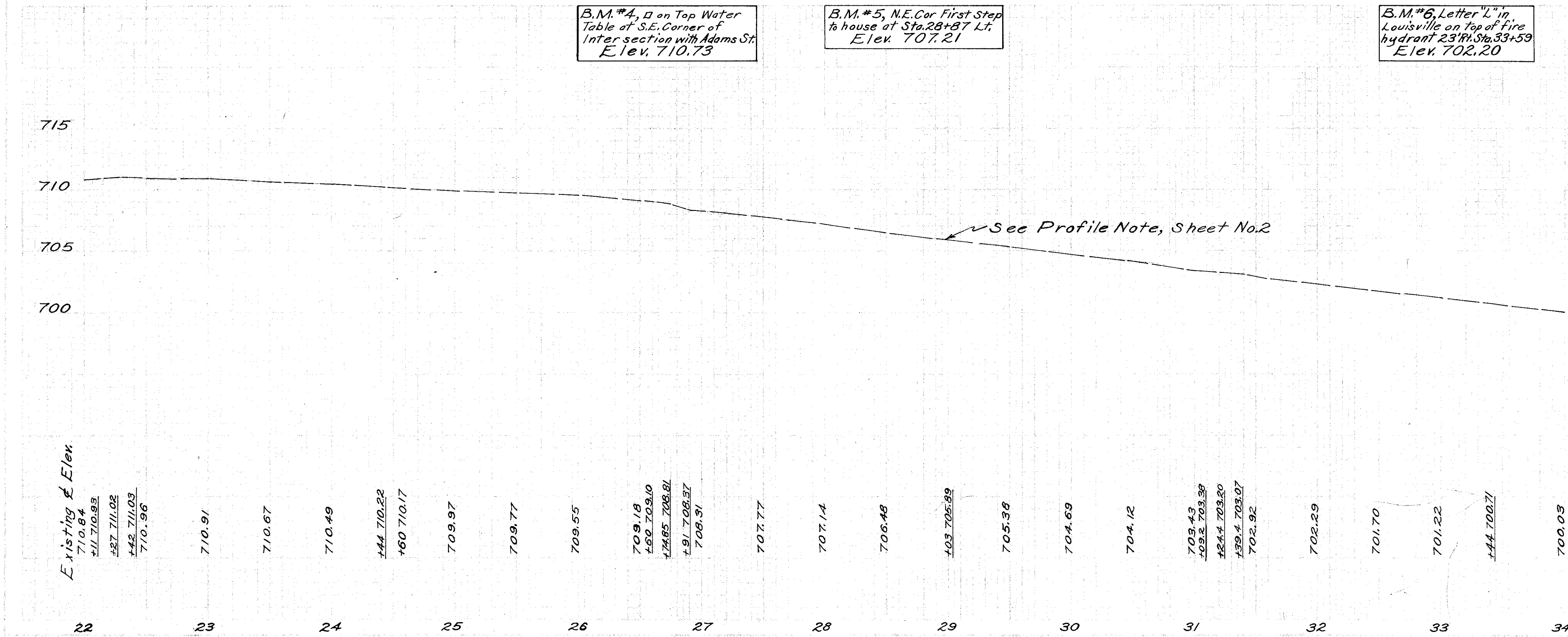
Station	Existing Elev.
10	+97 710.81
	+14 710.04
	+35 710.07
	+48 710.20
11	710.34
	710.56
12	710.71
	+32 710.81
	710.79
13	710.84
	711.03
14	711.03
	+28 711.05
	711.14
15	711.35
	711.42
16	+21 711.26
	+33 711.50
	+65 711.50
	711.52
	+11 711.87
	+21.3 711.32
	+40 710.87
	+52 711.10
17	711.55
	+32 711.82
	+64 711.86
18	711.81
	+12 711.83
19	711.57
	711.90
20	+94 711.33
	+08 711.28
	+32 711.16
	711.09
21	+90 711.03
	+08 710.99
	+36 710.97
	+67 710.89
22	710.84

FOR ANY QUESTIONS PLEASE CONTACT ODOT DISTRICT 2 REAL ESTATE AT 419-353-8131

10 Ohio 1941 10  
 SANDUSKY COUNTY  
 S.H. 515 SEC. GREEN SPRINGS  
 SENECA COUNTY  
 S.H. 515 SEC. GREEN SPRINGS



MISCELLANEOUS					
Ref. No.	Station	Rt or Lt.	Item E-12 Remove and Store Existing Pipe Lin. Ft.	Item I-8 Resetting Manhole Casting Each	Remarks
1-A	22+64	Lt.	12	6"	Pipe encased in Concrete Ramp
2-A	24+26	Lt.	10		Pipe encased in Concrete Ramp
3-A	24+31	Lt.		1	Fire Cistern 21' Lt.
4-A	25+17.5	Lt.	17		Pipe encased in Concrete Ramp
Totals			12	27	1



Existing Elev.  
 710.84  
 711.710.93  
 711.711.02  
 711.711.03  
 710.96

B.M. #4, □ on Top Water Table at S.E. Corner of Intersection with Adams St. Elev. 710.73

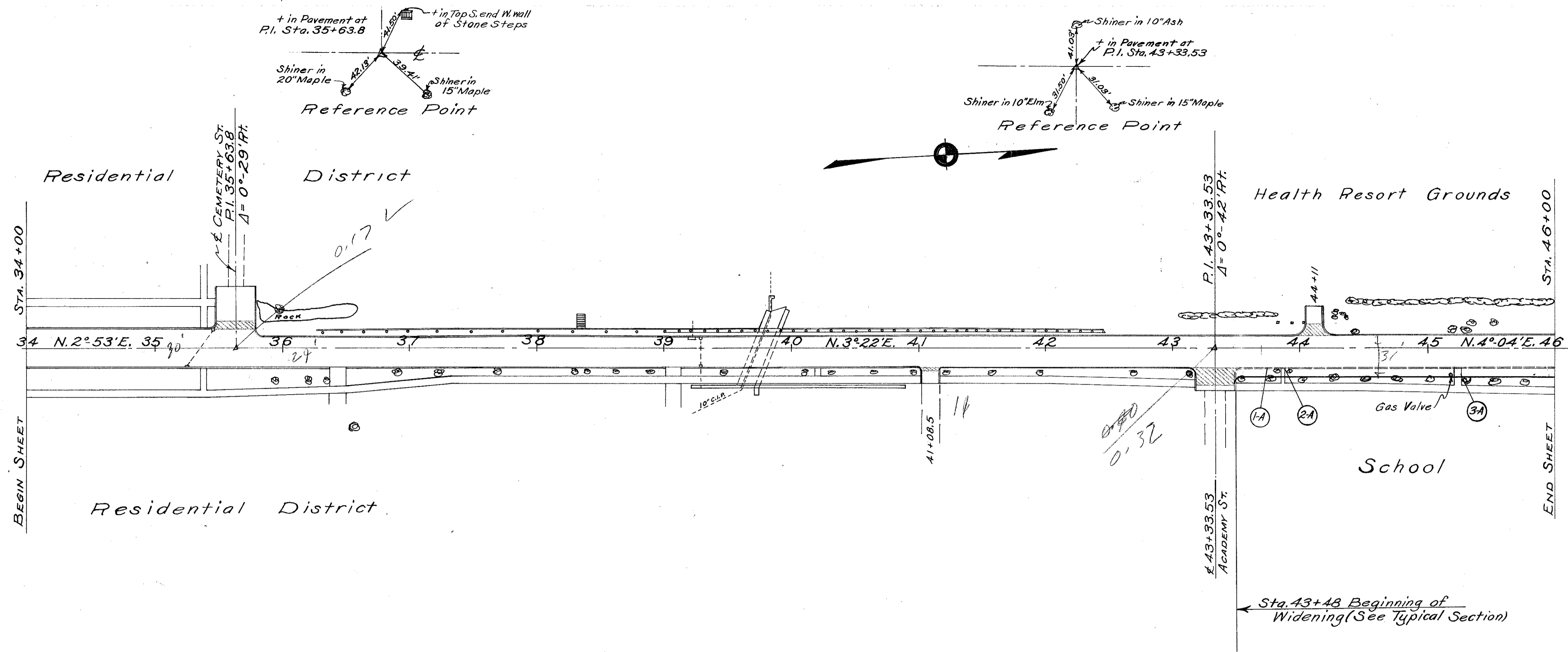
B.M. #5, N.E. Cor First Step to house at Sta. 28+87 Lt. Elev. 707.21

B.M. #6, Letter "L" in Louisville on Top of fire hydrant 23' Rt. Sta. 33+59 Elev. 702.20

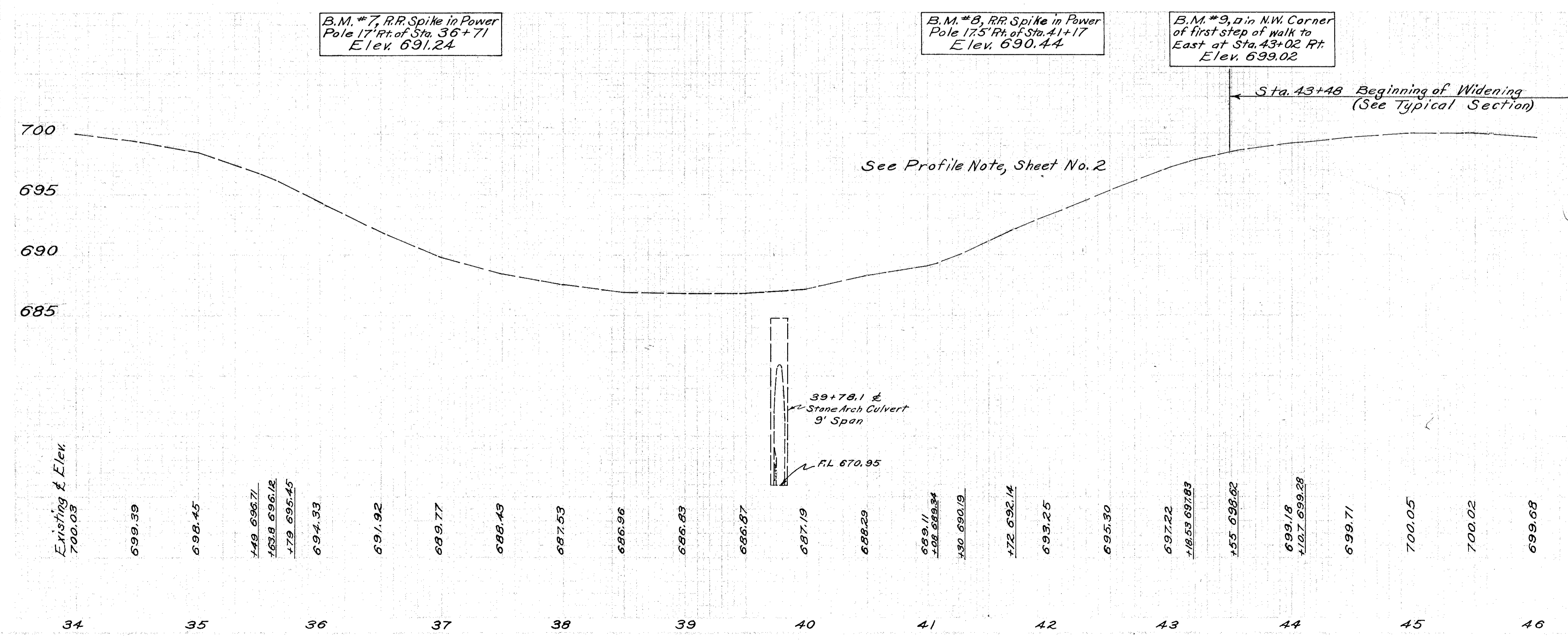
22 23 24 25 26 27 28 29 30 31 32 33 34

710.84 711.710.93 711.711.02 711.711.03 710.96 710.91 710.67 710.49 710.22 710.17 709.97 709.77 709.55 709.18 709.10 708.81 708.57 708.31 707.77 707.14 706.48 705.89 705.36 704.69 704.12 703.43 703.39 703.20 703.07 702.92 702.29 701.70 701.22 700.71 700.03

10 OHIO 1941 10  
 SANDUSKY COUNTY  
 S.H. 515 SEC. GREEN SPRINGS  
 SENECA COUNTY  
 S.H. 515 SEC. GREEN SPRINGS



MISCELLANEOUS						
Ref. No.	Station	Rt. or Lt.	Item E-8 Removal and Storage of Existing Curbs, Lin. Ft.	Item E-8 Removal and Disposal of Existing Walk, Sq. Ft.	Item I-13 Concrete Sidewalk, Sq. Ft.	Remarks
1-A	43+28 to 46+00	Rt.	263			
2A	43+86	Rt.		42	20	3' Width Walk Required
3A	45+23	Rt.		77	40	5' Width Walk Required
Totals			263	119	60	



Existing & Elev.  
700.03

34 35 36 37 38 39 40 41 42 43 44 45 46



