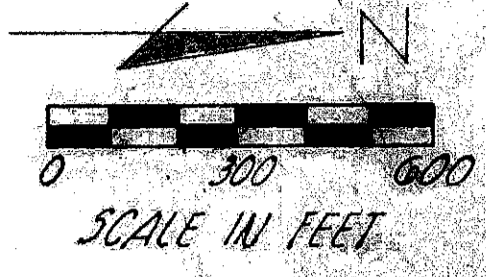


FED. RD. DIVISION	STATE	PROJECT	TYPE
2	OHIO	50-5-131(4)	

SAN.19-10.89

LOCATION PLAN FOR CITY OF FREMONT OUTFALL SEWER & DITCH



That part of the RIGHT OF WAY purchased by The Department of Transportation for the City of Fremont Outfall Sewer & Ditch built under Project 5U-131(3) as shown on this sheet and on Construction Drawings for 5U-131(3) for Oak Harbor Road and San-19-10.89, is approved by us this 11 day of May, 1974.

[Signature]
COUNTY COMMISSIONERS
SANDUSKY COUNTY, OHIO

For THE CITY OF FREMONT:
F. J. Vandenberg 3-11-74
 CITY ENGINEER DATE
Walter Overly 3-11-74
 MAYOR DATE

I here by certify that Parcels 37WD & 49WD shown hereon have been purchased for the City of Fremont Outfall Sewer & Ditch and that deeds for same have been recorded in Vol. 283, Pg. 471, and Vol. 282, Pg. 323, in the records of Sandusky Co.

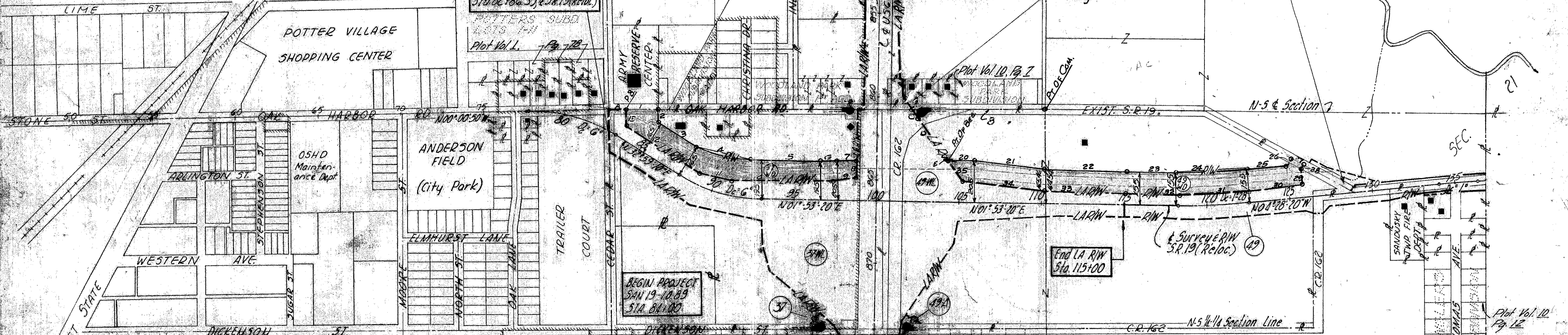
James M. Cantelero 3-5-74
 DISTRICT No. 2, DIST. DEPUTY DIRECTOR Date

I find that the location of the Outfall Sewer & Ditch for the City of Fremont and Right of Way necessary, have been constructed and furnished in a satisfactory method and are in good repair.

T. C. Bieshermer 3-8-74
 SANDUSKY COUNTY ENGINEER, DEPUTY Date

CITY OF FREMONT

Existing State Route 19 is abandoned to Sandusky County as of December 13, 1972, from State Route Nos. US 6 and 20, northerly to its junction with relocated State Route 19; See Director's Journal Vol. 51, Page 1154 & Vol. 57, Page 1191.



PARCEL 37-WD

COURSE	BEARING	DIST.	STATION	DIST. LT.	REMARKS
POINT OF COMMENCEMENT					
A	N00°57'00"E	100.00	83+05.47	162.39	CENTER POST SECTION 28
1	N00°57'00"E	194.11	84+69.62	264.95	Pt. OF BEGINNING
2	S89°03'00"E	64.82	85+00	210.00	
3	N32°59'10"E	285.69	87+86.33	210.00	
4	N17°26'15"E	283.05	91+55.77	231.57	CURVE RAD=572.96 L=286.55 Ch=283.05
5	N01°53'20"E	458.42	96+50	240.00	
6	N03°19'18"W	100.50	97+50	250.00	
7	N01°53'20"E	132.98	98+82.98	250.00	
8	S86°33'47"E	110.42	98+80	139.62	
9	S08°50'00"E	132.31	97+50	115.00'	
10	S01°53'20"W	628.40	91+00	95.91'	
11	S12°31'47"W	182.23	89+00	78.47'	
12	S32°59'10"W	540.02	83+50.13	85.00'	
13	N89°31'50"W	91.28			Pt. OF BEGINNING

PARCEL 49-WD

COURSE	BEARING	DISTANCE	STATION	DIST. LT.	REMARKS
POINT OF COMMENCEMENT: NW CORNER OF NE 1/4 OF SECTION 28					
B	S00°37'00"W	826.78	101+87.34	553.09'	
C	N67°54'30"E	31.16	102+00	524.62'	
D	N51°51'31"E	326.50	104+10	274.62'	
E	N56°11'18"E	18.00	104+20.51	260.00	Pt. OF BEG.
20	N01°53'20"E	179.49	106+00	260.00	
21	N08°18'28"E	402.52	110+00	215.00	
22	N03°02'05"E	500.10	115+00	205.00	
23	N01°53'20"E	325.16	118+25.16	205.00	
24	N01°17'30"W	410.74	122+58.87	205.00	
25	N04°28'20"W	241.13	125+00	205.00	CHORD=410.74'
26	N60°19'10"W	49.91	125+28.02	246.30	
27	N29°40'50"E	77.12	125+91.84	203.01	
28	S60°19'10"E	30.00	125+75	178.18	
29	N85°31'40"E	108.18	125+75	70	
30	S04°28'20"E	316.13	122+58.87	70	R=3836.53'
31	S01°17'30"E	425.72	118+25.16	70	Chord=425.72'
32	S01°53'20"W	325.16	115+00	70	Lc=425.91'
33	S03°02'05"W	500.10	110+00	80	
34	S07°35'58"W	487.42	105+15	123.50	
35	S56°11'18"W	161.93			Pt. OF BEG.

R5019 43 E-1

CENTERLINE SURVEY PLAT

OHIO DEPARTMENT OF HIGHWAYS

STATE ROUTE 19 SEC. 10.89

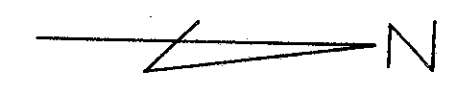
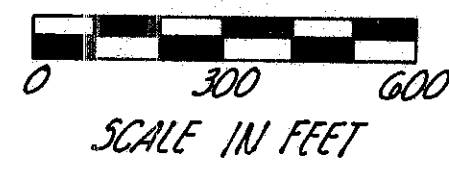
SANDUSKY COUNTY

FED. RD. DIVISION	STATE	PROJECT	TYPE FUNDS
2	OHIO	5U-5-131(4)	

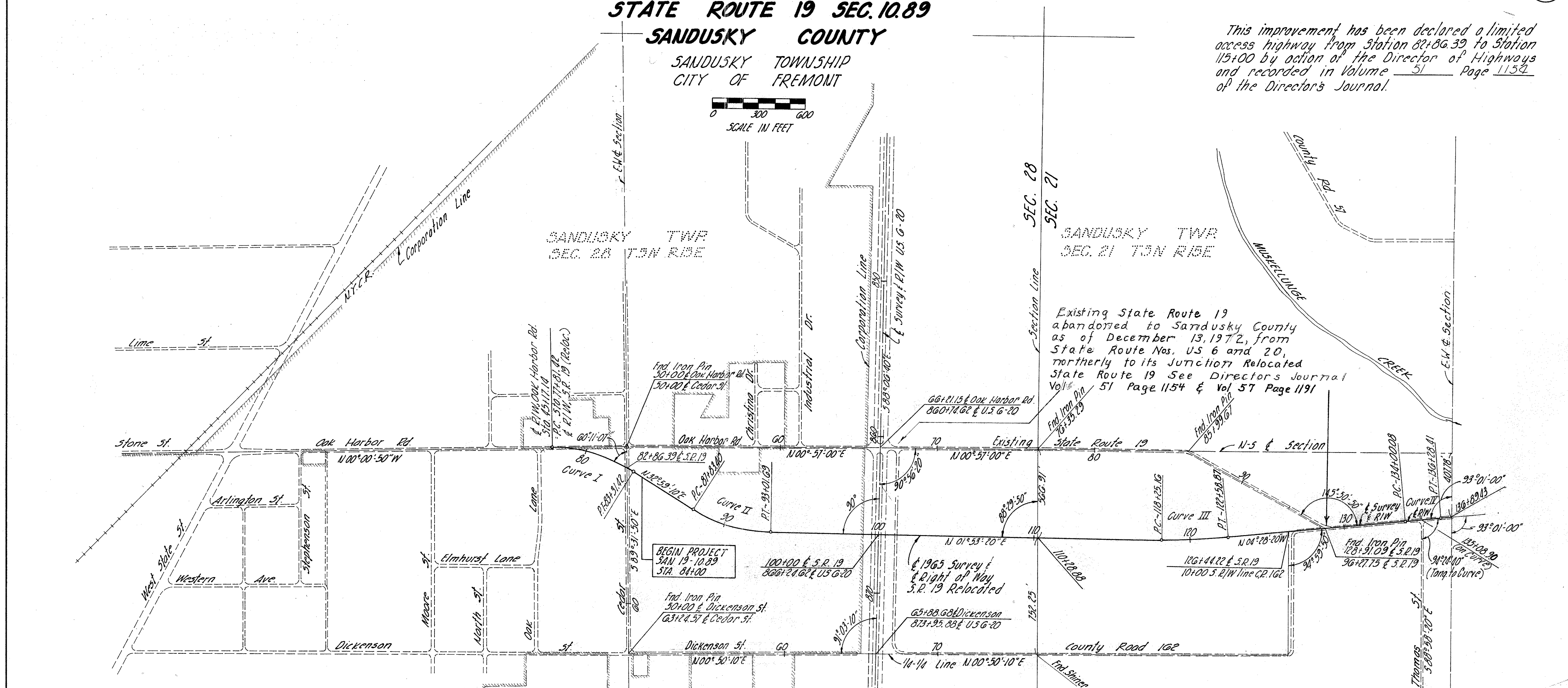
LIMITED ACCESS
Sheet 1 of 2

134
149
2
17

SANDUSKY TOWNSHIP
CITY OF FREMONT



This improvement has been declared a limited access highway from Station 82+86.39 to Station 115+00 by action of the Director of Highways and recorded in Volume 51 Page 1154 of the Director's Journal.



CENTERLINE MONUMENT ASSEMBLIES TO BE SET AS PART OF THIS CONTRACT		
Monument Assemblies	Monument Assemblies	Monument Assemblies
SR 19 on & R/W	R/W P.O.T. 138+36.04	R/W P.O.T. 153+36.04 BK.
P.T. 83+31.42	R/W P.C. 139+19.39	P.O.T. 154+50.00 AH.
P.C. 87+83.40	R/W P.C.C. 140+86.09 BK.	P.I. 156+98.92
P.T. 93+01.69	R/W P.C.C. 140+86.04 AH.	P.I. 160+60.64
P.O.T. 98+00	R/W P.C.C. 143+02.71	P.I. 165+21.64
P.O.T. 102+00	R/W P.T. 144+69.41 BK.	P.I. 191+91.24
P.O.T. 110+28.88	R/W P.T. 144+69.36 AH.	P.I. 217+99.42
P.C. 118+25.16	R/W P.C. 146+36.06	Exist. Mon. on & R/W US 6-20
P.T. 122+58.87	R/W P.C.C. 148+02.76 BK.	(Do Not Disturb)
P.O.T. 128+91.09	R/W P.C.C. 148+02.71 AH.	844+48.5
P.C. 134+00.08	R/W P.C.C. 150+86.04	870+00
P.T. 136+28.41	R/W P.T. 152+52.14 BK.	879+24.5
	R/W P.T. 152+52.09 AH.	

TOTAL REQUIRED (5 sheets 23)
Monument Assembly (Standard
Constr. Dwg. MC-1) - 26

I hereby certify this plat to be a true delineation of a survey made by Sanzenbacher Miller, Brigham & Scott of Toledo, Ohio

Date: Oct 8 1968 By: Frederick W. Miller
Registered Surveyor No. 1892

Date: 12-9-68 Approved: R. K. Rice
Division Deputy Director
Professional Engineer No. 666

RECEIVED 1-15-69 AT _____
RECORDED _____
PLAT BOOK 9 PAGE 71 & 72
FEE _____
SIGNED: _____
SANDUSKY COUNTY RECORDER

FED. RD. DIVISION	STATE	PROJECT	TYPE FUNDS
2	OHIO	SU-5-131(4)	

135
149

3
17

Sheet 2 of 2

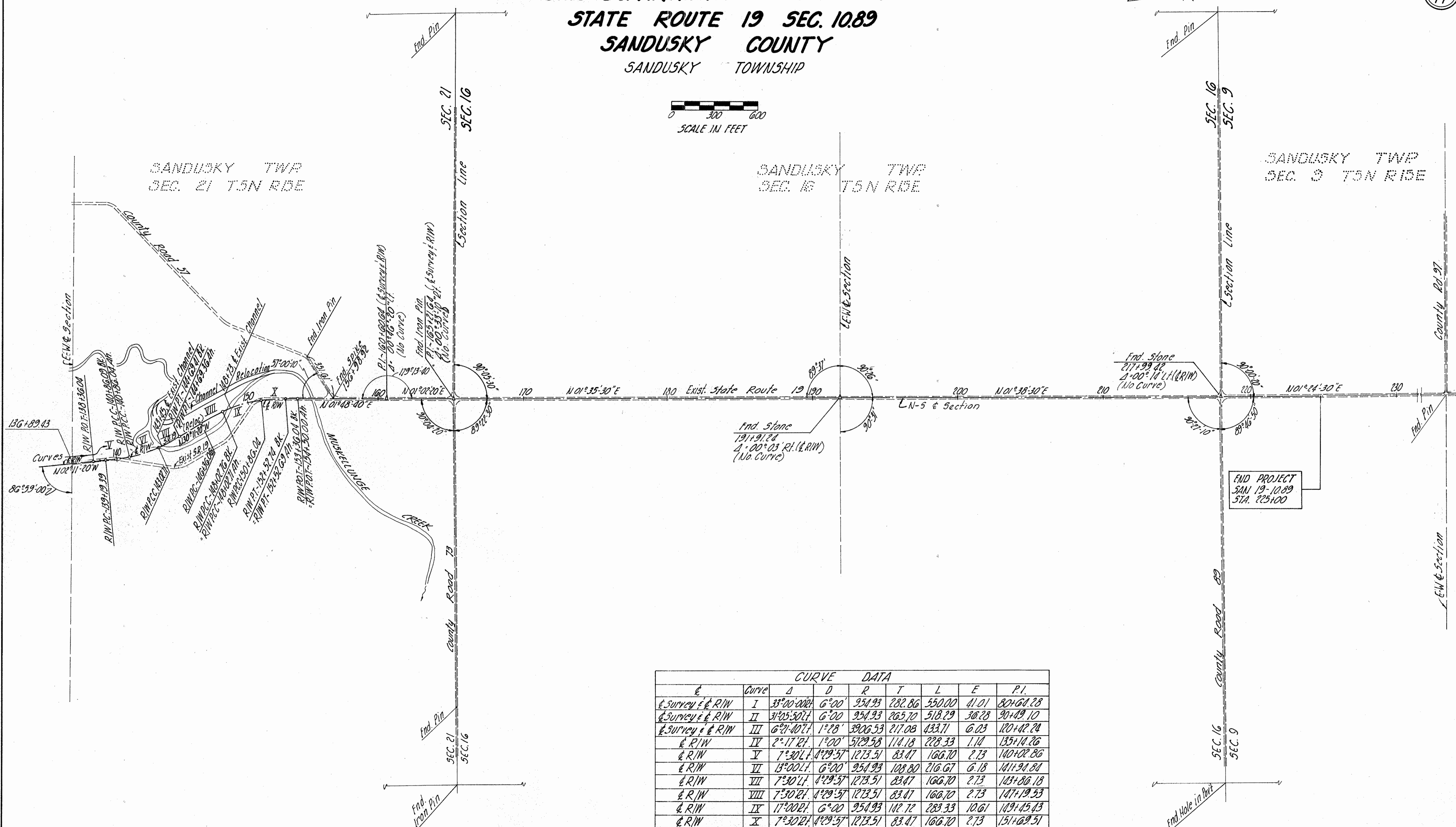
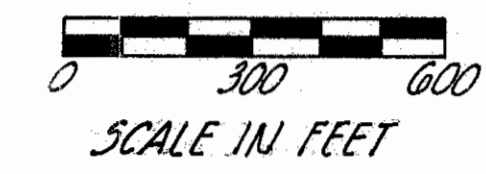
CENTERLINE SURVEY PLAT

OHIO DEPARTMENT OF HIGHWAYS

STATE ROUTE 19 SEC. 10.89

SANDUSKY COUNTY

SANDUSKY TOWNSHIP



CURVE DATA									
Curve	Δ	D	R	T	L	E	P.I.		
Survey & R/W I	33° 00' 00"	6° 00'	954.93	282.86	550.00	41.01	80+60.28		
Survey & R/W II	3° 05' 50.7"	6° 00'	954.93	265.70	518.29	30.28	90+49.10		
Survey & R/W III	6° 21' 40.7"	1° 28'	3906.53	217.08	433.71	6.03	120+42.24		
R/W IV	2° 17' 21"	1° 00'	5129.58	114.18	228.33	1.14	135+14.26		
R/W V	7° 30' 21"	1° 29' 57"	1273.51	83.47	166.70	2.73	140+02.86		
R/W VI	13° 00' 21"	6° 00'	954.93	108.80	216.67	6.18	141+94.81		
R/W VII	7° 30' 21"	1° 29' 57"	1273.51	83.47	166.70	2.73	143+86.18		
R/W VIII	7° 30' 21"	1° 29' 57"	1273.51	83.47	166.70	2.73	147+19.53		
R/W IX	17° 00' 21"	6° 00'	954.93	142.72	283.33	10.61	149+45.43		
R/W X	7° 30' 21"	1° 29' 57"	1273.51	83.47	166.70	2.73	151+69.51		

END PROJECT
SAN 19-10.89
STA. 225+00

10-28-68

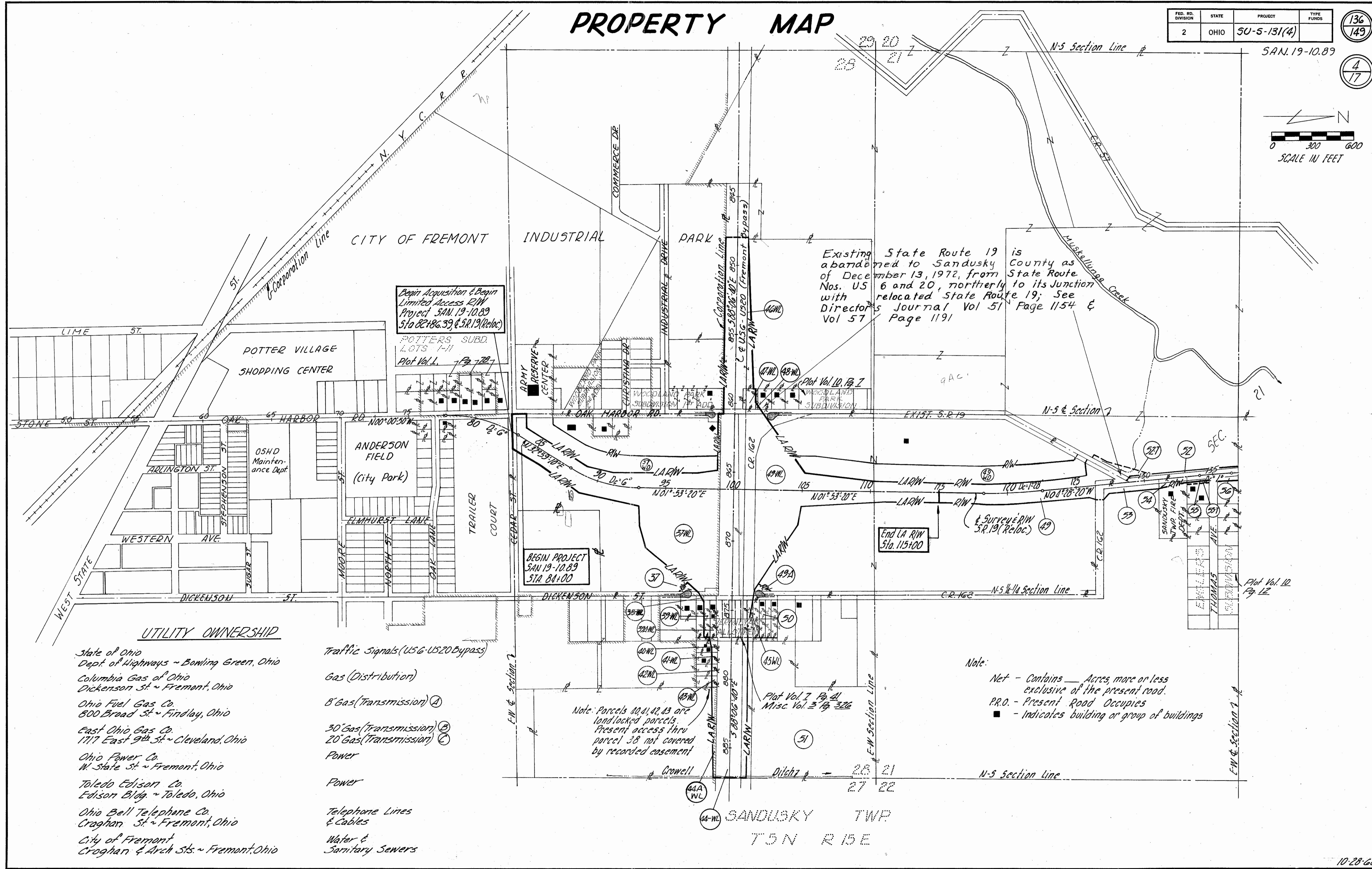
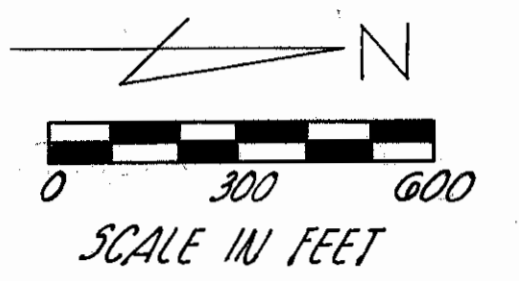
PROPERTY MAP

FED. RD. DIVISION	STATE	PROJECT	TYPE FUNDS
2	OHIO	SU-5-131(4)	

136
149

4
17

SAN.19-10.89



Begin Acquisition & Begin Limited Access R/W Project SAN.19-10.89 S/A 82+86.39 & SR.19 (Reloc)

Existing State Route 19 is abandoned to Sandusky County as of December 13, 1972, from State Route Nos. US 6 and 20, northerly to its Junction with relocated State Route 19; See Director's Journal Vol 51 Page 1154 & Vol 57 Page 1191

BEGIN PROJECT SAN 19-10.89 STA. 84+00

End LA R/W Sta. 115+00

Note: Parcels 40, 41, 42, 43 are landlocked parcels. Present access thru parcel 38 not covered by recorded easement

Note:
 Net - Contains — Acres, more or less exclusive of the present road.
 P.R.O. - Present Road Occupies
 ■ - Indicates building or group of buildings

UTILITY OWNERSHIP

- State of Ohio
Dept. of Highways ~ Bowling Green, Ohio
- Columbia Gas of Ohio
Dickenson St. ~ Fremont, Ohio
- Ohio Fuel Gas Co.
800 Broad St. ~ Findlay, Ohio
- East Ohio Gas Co.
1717 East 9th St. ~ Cleveland, Ohio
- Ohio Power Co.
W. State St. ~ Fremont, Ohio
- Toledo Edison Co.
Edison Bldg. ~ Toledo, Ohio
- Ohio Bell Telephone Co.
Craghan St. ~ Fremont, Ohio
- City of Fremont
Craghan & Arch Sts. ~ Fremont, Ohio

- Traffic Signals (US6-US20 Bypass)
- Gas (Distribution)
- 8" Gas (Transmission) (A)
- 30" Gas (Transmission) (B)
- 20" Gas (Transmission) (C)
- Power
- Power
- Telephone Lines & Cables
- Water & Sanitary Sewers

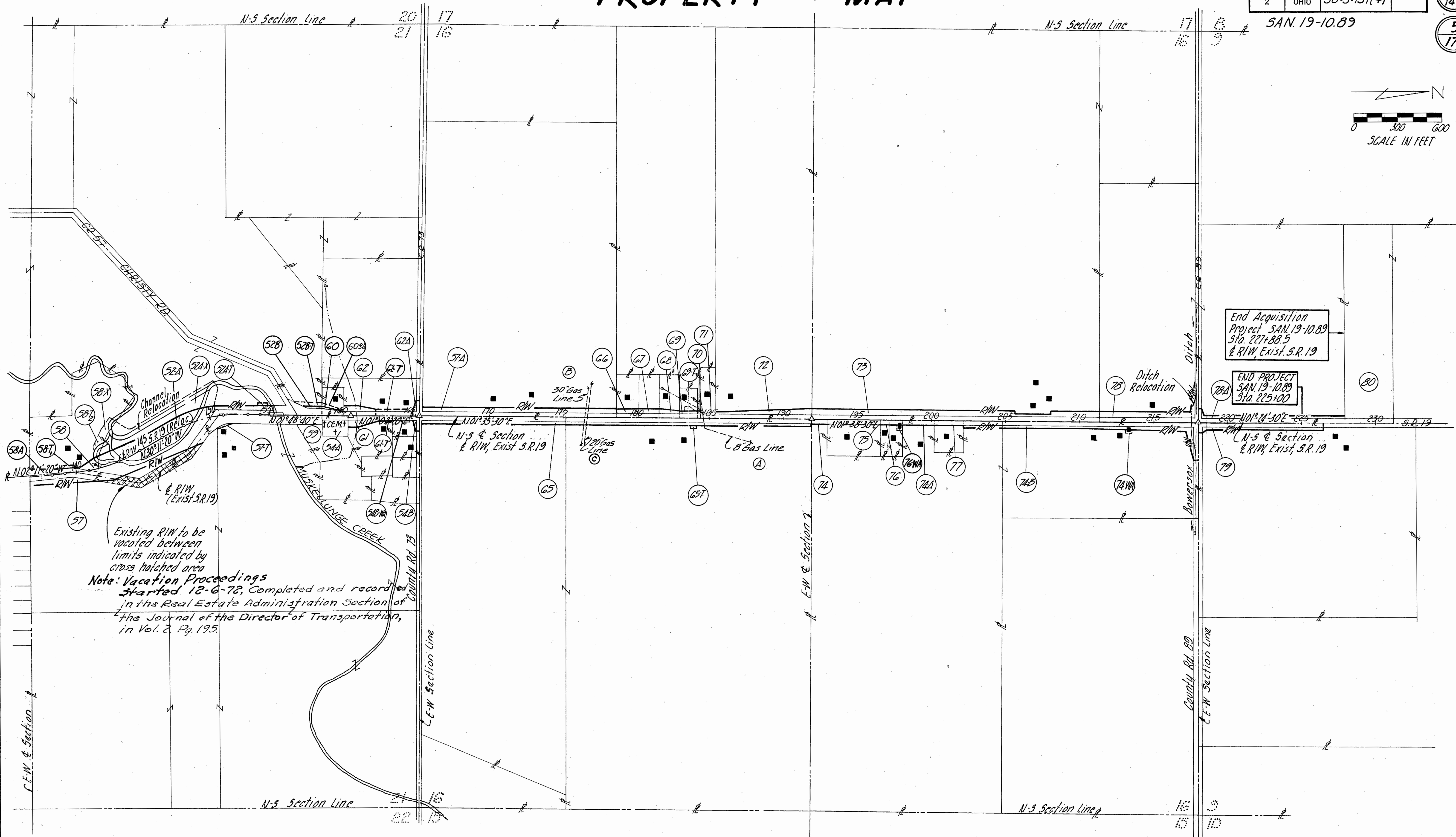
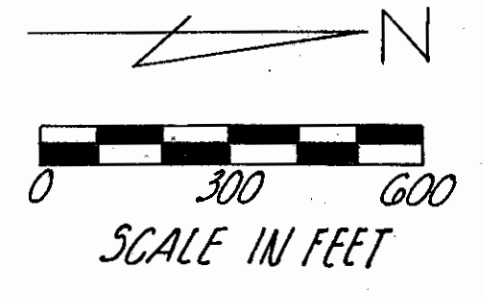
PROPERTY MAP

FED. NO. DIVISION	STATE	PROJECT	TYPE FUNDS
2	OHIO	5U-5-131(4)	

137
149

SAN. 19-10.89

5
17



Existing R/W to be vacated between limits indicated by cross hatched area
Note: Vacated Proceedings
 Started 12-6-72, Completed and recorded in the Real Estate Administration Section of the Journal of the Director of Transportation, in Vol. 2, Pg. 195.

End Acquisition
 Project SAN. 19-10.89
 Sta. 227+88.5
 & R/W, Exist. S.R. 19

END PROJECT
 SAN. 19-10.89
 Sta. 225+00

SANDUSKY TWP
 T 5 N R 15 E

3	5-22-79	Vacated Proceedings Notes
2	8-13-69	Parcel 52A Changed Exist. & Prop. R/W Lines
1	4-2-69	Par. 60T Changed To 60-S4 C.E.S. 10-28-68

Revised July 1947

SUMMARY OF ADDITIONAL RIGHT OF WAY REQUIRED

1 4-2-69 PAR. 60T CHANGED TO 60-SL C.E.S.
REV. DATE REMARKS

Parcel No.	Owner	Deed Record		Deed Area	Total P.R.O.	To Be Acquired				Net Residue		R/W Sheet No.	Type Funds	Remarks
		Book	Page			Grass	P.R.O.	Net	Bldg's	Left	Right			
37-WL	Enora E. Willey	249	882-83	42.75Ac	7.15Ac	18.91Ac	4.65Ac	14.26Ac				7,8,9,16,17		
37-WD	"					4.30Ac	0.13Ac	4.17Ac				7,8		For City of Fremont Outfall Ditch Proj. SU-13(3)
37	"					0.20Ac	0.10Ac	0.10Ac				7,8,9,16,17		To build Cul-de-Sac
38-WA	First Baptist Church													To Build Drive Approach
38-WL	First Baptist Church	190	142	0.413Ac	0.041Ac	0.001Ac	0.001Ac					17		
39-WL	Pablo & Lucy B. Cuevas	259	154-56	12,150sf	~	12,150sf	~	12,150sf	Yes	None		17		Total area taken
39A-WL	Pablo Cuevas	194	35960	12,150sf	~	12,150sf	~	12,150sf	Yes	None		17		Total area taken
40-WL	Juan M. Diaz	250	1007	0.30Ac	~	0.09Ac	~	0.09Ac				17		
41-WL	Ed G. & Lucy Bulger	250	824-25	0.30Ac	~	0.08Ac	~	0.08Ac				17		Existing Landlocked Parcel - Physical access thru parcel 38 not covered by recorded easement
42-WL	Rafael & Manuela Gonzalez	234	314-15	0.29Ac	~	0.08Ac	~	0.08Ac				17		
43-WL	Ramon Diaz	234	397	0.29Ac	~	0.08Ac	~	0.08Ac				17		
44-WL	Fremont Krug Co.	144	178	6.278	6.278	5.060	5.060	0				17		Existing Highway Easement
44A-WL	The Board of Education of the Joint Vocational School District	271	314	20.563	0.021	0.46	0.00	0.46Ac				20.082	17	
45-WL	William J. Garn	204	355-358	23,760sf	23,760sf	4570sf	4570sf	~		None		17		Exist. Highway Easement Vol. 224, Pg. 234
46-WL	Herbert C. Brauchla	227	266	31,054sf	6.45Ac	5.51Ac	4.73Ac	0.78Ac				22.23Ac	16	
47-WL	Herbert C. & Garnet N. Brauchla	269	1011	12,000sf	14,79sf	12,000sf	14,79sf	10,221sf		None		16		
37	ACCESS GRANT													
48-WL	Elizabeth H. Koebel	273	401	18,000sf	~	704sf	~	704sf				17,278sf	16	
49-WL	John W. & Lois M. Monahan	259	754-56	75Ac	7.20Ac	14.08Ac	3.91Ac	10.17Ac		13.68	33.12	9,16,17		
49-WD	"					6.59Ac	0.05Ac	6.54Ac				9,10		For City of Fremont Outfall Ditch Proj. SU-13(3)
49	"					4.55Ac	0.35Ac	4.20Ac				10		
49A	"					0.18Ac	0.09Ac	0.09Ac				17		To build Cul-de-Sac
52	Toledo Trust Co. (Trustee)	162	537-134	283,40Ac	10.2Ac	0.93Ac	0.58Ac	0.35Ac				10,11		Deed Area of Total P.R.O. Shown for Sec. 21 only 0.37Ac P.R.O. to be vacated
52A	"					4.28Ac	0.58Ac	3.70Ac				11,12		
52B	"					0.17Ac	0.14Ac	0.03Ac		26.6Ac		12		
52-T	"					0.31Ac	~	0.31Ac				10		To build culvert outlets
52A-T	"					0.04Ac	~	0.04Ac				12		To shape sideslope
52B-T	"					0.10Ac	~	0.10Ac				12		To shape backslope
52A-X	"					2.17Ac	~	2.17Ac				11,12		For channel relocation
53	Oliver P. Rosenberger	154	402	90Ac	2.50Ac	0.72Ac	0.42Ac	0.30Ac				87.20Ac	10,11	
54	Sandusky Twp. Board of Trustees	263	55	2.00Ac	0.14Ac	0.23Ac	0.14Ac	0.09Ac				1.77Ac	11	
54B	"	143	347	0.57Ac	0.13Ac	0.05Ac	0.03Ac	0.02Ac				0.42Ac	13	
54B-T	"					0.04Ac	~	0.04Ac				?	13	To build drive approach
55	Russell M. & Agnes R. Willis	218	187	44,815sf	~	1,645sf	~	1,645sf				43,280sf	11	
55-T	"					1,632sf	~	1,632sf				?	11	To grade yard drains
56	Harold G. & Mary C. Engler	175	211	29,175sf	~	5,123sf	~	5,123sf				24,624sf	11	
57	Edgar J. Artz & Raymond W. Artz	279	585	130.25Ac	1.68Ac	0.75Ac	0.37Ac	0.38Ac				128.19Ac	11,12	0.99Ac P.R.O. to be vacated
57-T	"					0.04Ac	~	0.04Ac				?	12	To build backslope
57A	"					60.0Ac	2.16Ac	1.99Ac	0.94Ac	1.05Ac		56.79Ac	13,14	Pipe Line Easements Vol. 229, P. 286

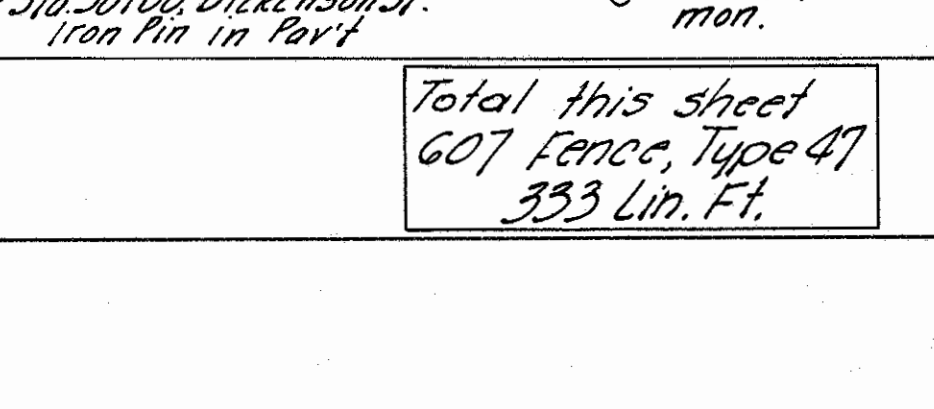
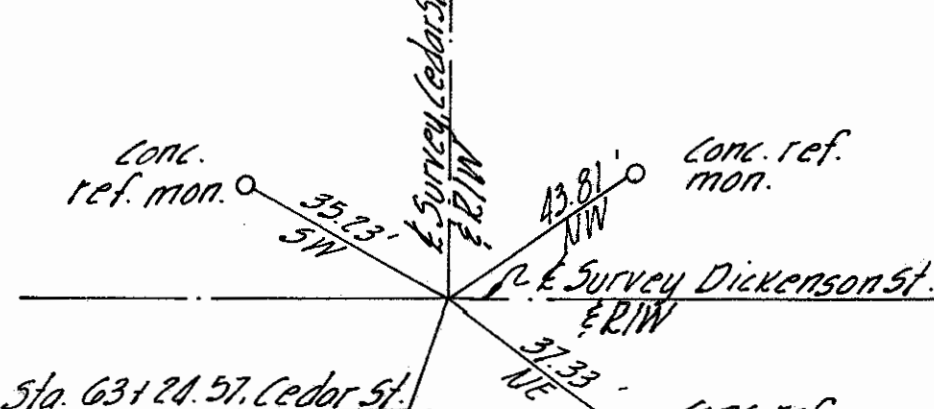
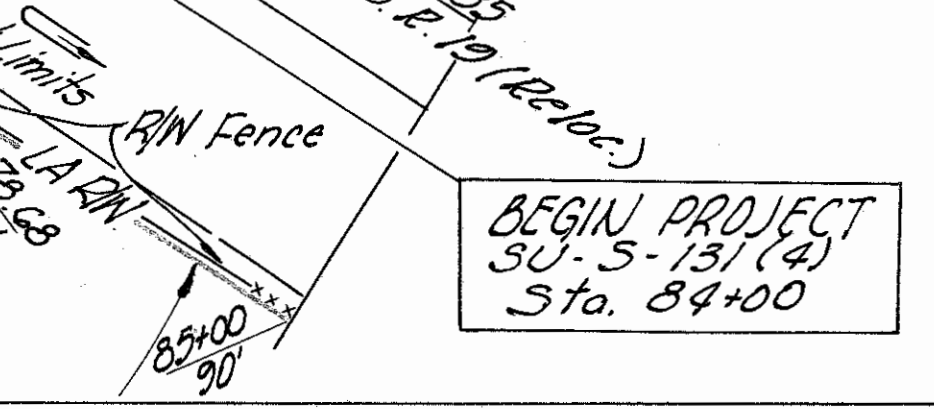
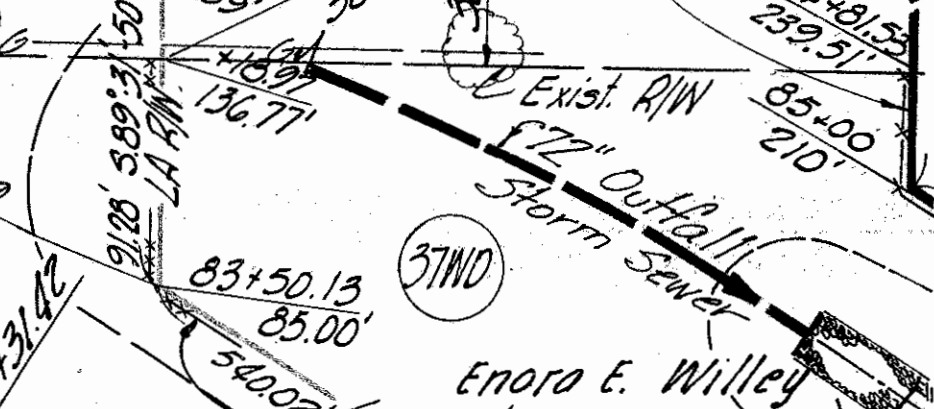
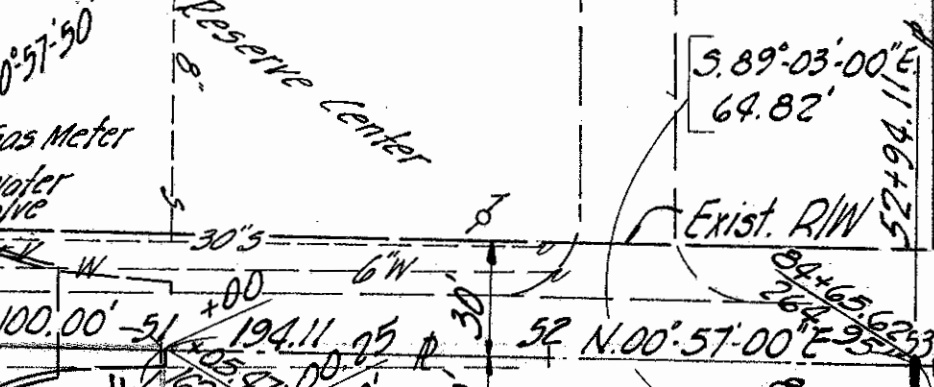
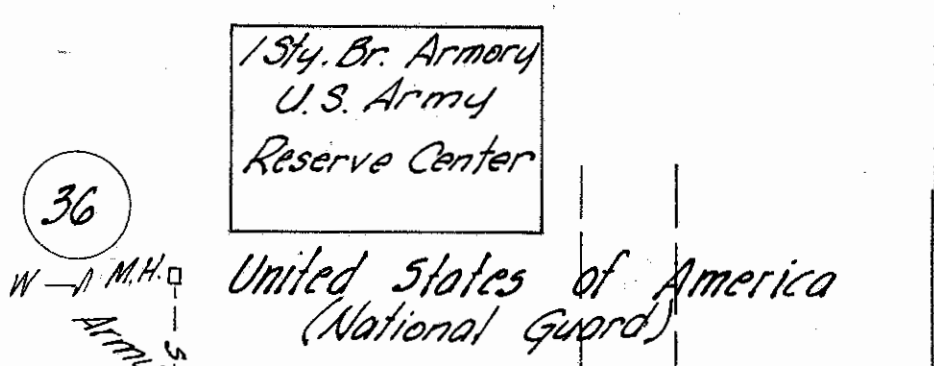
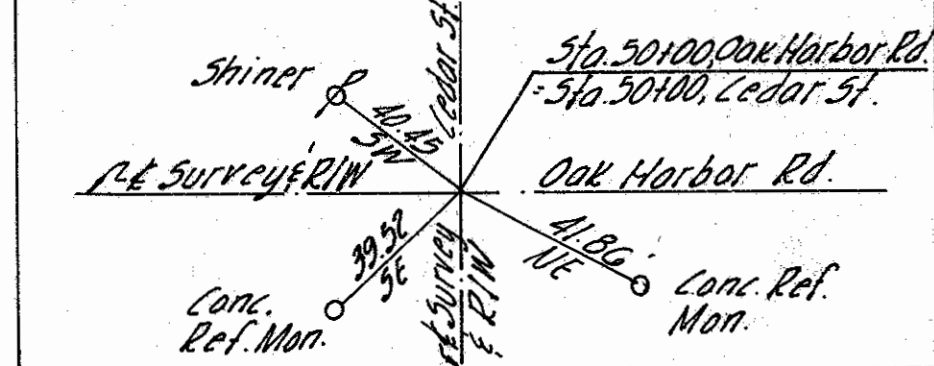
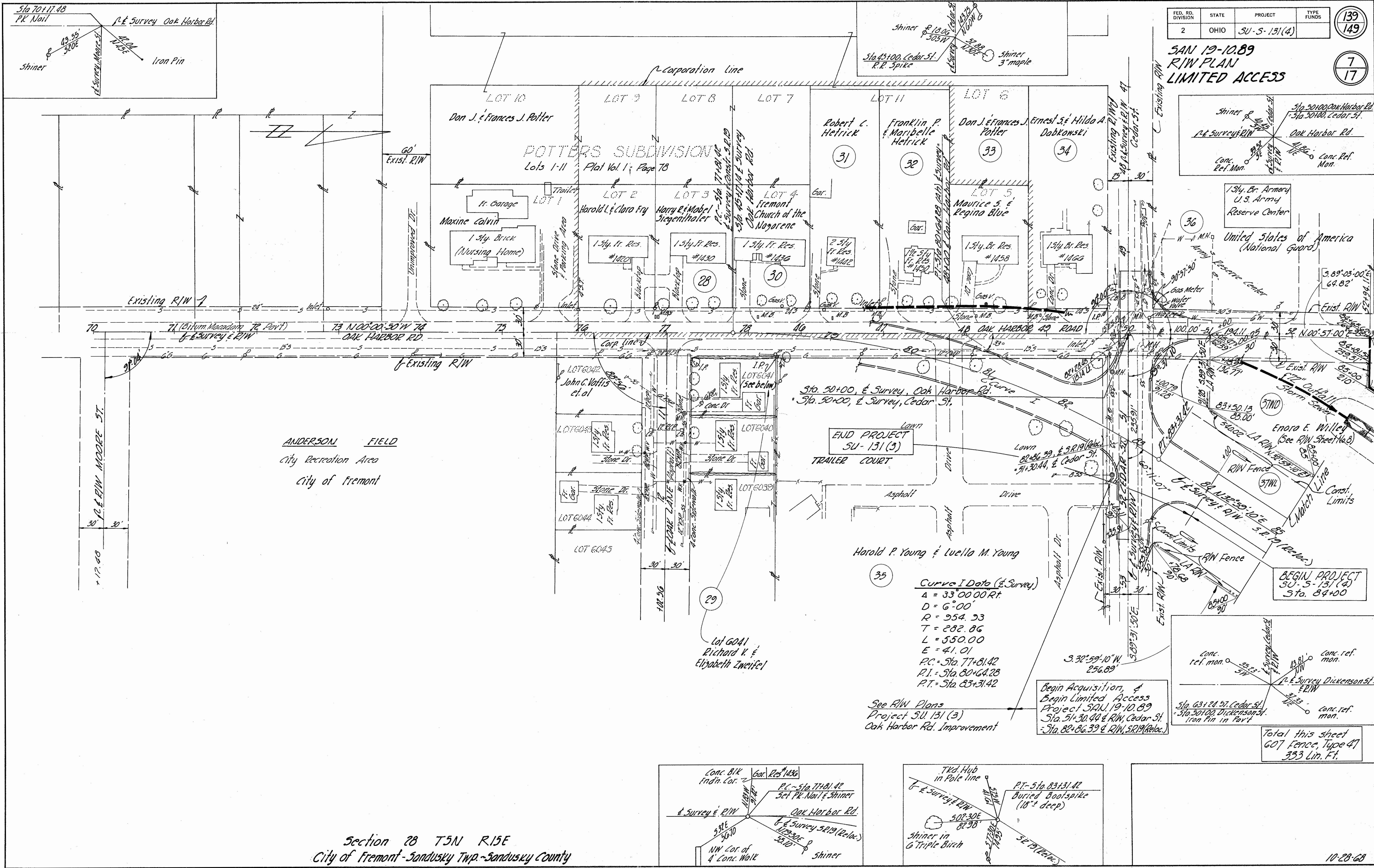
Total No. of Owners 38

Parcel No.	Owner	Deed Record		Deed Area	Total P.R.O.	To Be Acquired				Net Residue		R/W Sheet No.	Type Funds	Remarks
		Book	Page			Grass	P.R.O.	Net	Bldg's	Left	Right			
58	Clara R. Gregory	260	65-123	7.41Ac	0.31Ac	0.27Ac	0.12Ac	0.15Ac				11		
58A	"					0.16Ac	0.13Ac	0.03Ac				11		
58-T	"					0.02Ac	~	0.02Ac				11		To shape backslope & construct drive approach
58-T2	"					0.22Ac	~	0.22Ac				11		To Grade existing channel area
58-X	"					0.13Ac	~	0.13Ac				11		For channel relocation
60	James D. Weiss	267	902	0.65Ac	0.14Ac	0.16Ac	0.14Ac	0.02Ac		0.49Ac		12		
60-SL	"					0.06Ac	~	0.06Ac				12		To shape backslope
61	Thomas W. & Janet M. Boyer	264	1046	2.00Ac	0.22Ac	0.29Ac	0.14Ac	0.15Ac		1.63Ac		13		
61-T	"					0.02Ac	~	0.02Ac				?	13	To shape backslope & construct drive approach
62	Walter J. & Lucile Kosta	238	214	3.15Ac	0.39Ac	0.30Ac	0.15Ac	0.15Ac				13		
62A	"					0.06Ac	0.04Ac	0.02Ac		2.59Ac		13		
62-T	"					0.06Ac	~	0.06Ac				13		To shape backslope & construct drive approach
65	Clarence F. & Lillian C. Kiser	230	452-54	1540Ac	2.95Ac	3.06Ac	1.85Ac	1.21Ac		149.84Ac		13,14		Pipe Line Easements Vol. 198, P. 339 Vol. 229, P. 225, 226
65-T	"					0.02Ac	~	0.02Ac				?	14	To install channel protection at sewer outlet
65-SA	"					~	~	~				14		Construction of outlet to provide drainage
66	Kenneth L. & Evelyn J. Merryfield	259	473	1.0Ac	0.11Ac	0.21Ac	0.11Ac	0.10Ac		0.79Ac		14		
67	Ivan L. & Norma M. Ross	254	1030	0.92Ac	0.10Ac	0.20Ac	0.10Ac	0.10Ac		0.72Ac		14		
68	Donald D. & Monia R. Williams	254	1013	0.93Ac	0.10Ac	0.18Ac	0.10Ac	0.08Ac		0.75Ac		14		
69	Frank & Virginia Hughes	233	442	0.55Ac	0.08Ac	0.14Ac	0.08Ac	0.06Ac		0.41Ac		14		Pipe Line Easement Vol. 234, P. 128
69-T	"					0.03Ac	~	0.03Ac				14		To outlet tile drain
70	Ada Tucker Kellogg	149	462	35.82Ac	0.01Ac	0.02Ac	0.01Ac	0.01Ac		35.80Ac		14		Pipe Line Easement Vol. 22 P. 244, 434
71	Jack & Viola R. Little	262	824	0.78Ac	0.07Ac	0.09Ac	0.07Ac	0.02Ac		0.69Ac		14		Pipe Line Easement Vol. 204 P. 225
72	Mattha Koepfle, AKA. Matie Emma Koepfle, L.C. Earl O. & H. Jane Rosenberger	151	191	40Ac	0.46Ac	0.84Ac	0.46Ac	0.38Ac		39.16Ac		14		Mineral Rights Leased See Lease Vol. 33, Pg. 412
73	Sherman McKenney	147	369	135Ac	1.35Ac	3.06Ac	1.35Ac	1.71Ac		131.94Ac		14,15		
74	Mary I. Gainer	137	347-188	96.20Ac	1.60Ac	0.11Ac	0.07Ac	0.04Ac				14		
74A	"					0.22Ac	0.15Ac	0.07Ac				14		
74B	"					1.93Ac	1.24Ac	0.69Ac		93.80Ac		14,15		
74-WA	"					?	?	?	Yes			15		To remove building
75	Ronald L. & Barbara Schmitz	259	189	2.00Ac	0.25Ac	0.37Ac	0.25Ac	0.12Ac		1.63Ac		14		
76	Robert & Marchia Skeels	193	264	81	0.795	0.10Ac	0.15Ac	0.10Ac	0.05Ac	0.65Ac		14		
76-WA	"					?	?	?	Yes			14		To remove building
77	Albert & Alice Darr	251	318	100Ac	0.14Ac	0.21Ac	0.14Ac	0.07Ac		0.79Ac		14		
78	Hattie Weickert	148	240	25.0Ac	1.18Ac	1.22Ac	0.55Ac	0.67Ac		23.15Ac		15		
78A	"					300Ac	1.28Ac	1.28Ac	0.71Ac	0.57Ac		28.15Ac	15	
79	Donald W. & Iona Kiser	157	649	455Ac	1.60Ac	0.89Ac	0.61Ac	0.28Ac		43.62Ac		15		

FED. RD. DIVISION	STATE	PROJECT	TYPE FUNDS
2	OHIO	SU-5-131(4)	139 149

5AN 19-10.89
R/W PLAN
LIMITED ACCESS

7
17



Total this sheet
607 Fence, Type 47
333 Lin. Ft.

ANDERSON FIELD
City Recreation Area
City of Fremont

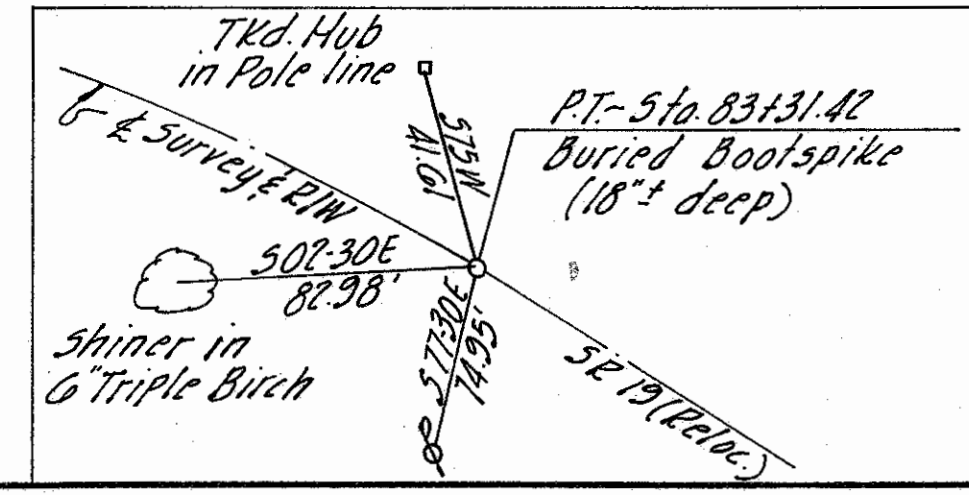
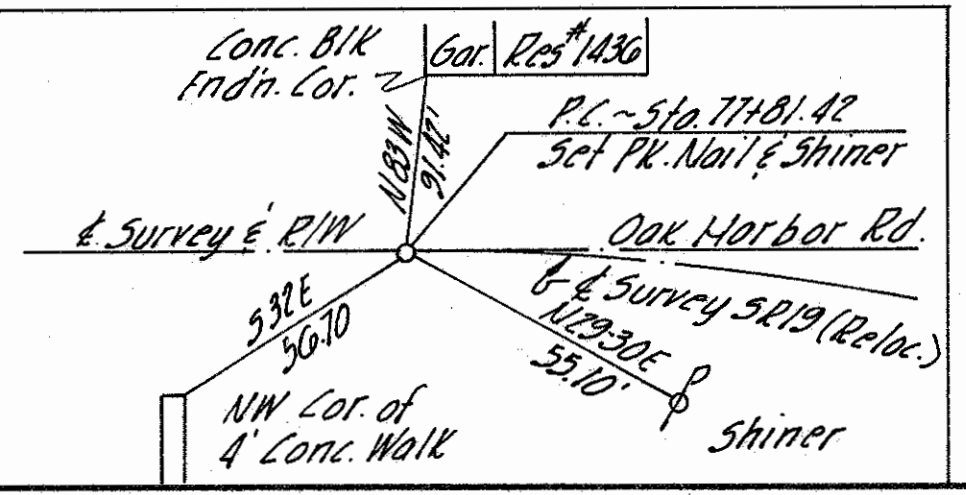
END PROJECT
SU-131(3)
TRAILER COURT

Curve Data (E. Survey)
Δ = 33°00'00" Rt.
D = 6°00'
R = 954.93
T = 282.86
L = 550.00
E = 41.01
P.C. = Sta. 77+81.42
P.I. = Sta. 80+64.28
P.T. = Sta. 83+31.42

See R/W Plans
Project SU-131(3)
Oak Harbor Rd. Improvement

Begin Acquisition, &
Begin Limited Access
Project 5AN 19-10.89
Sta. 51+30.44 & R/W, Cedar St.
Sta. 82+86.39 & R/W, SR19 (Reloc.)

Section 28 T5N R15E
City of Fremont - Sandusky Twp. - Sandusky County



Stamp
11/15/88
10-28-88

FOR ANY QUESTIONS PLEASE CONTACT ODOT DISTRICT 2 REAL ESTATE AT 419-353-8131

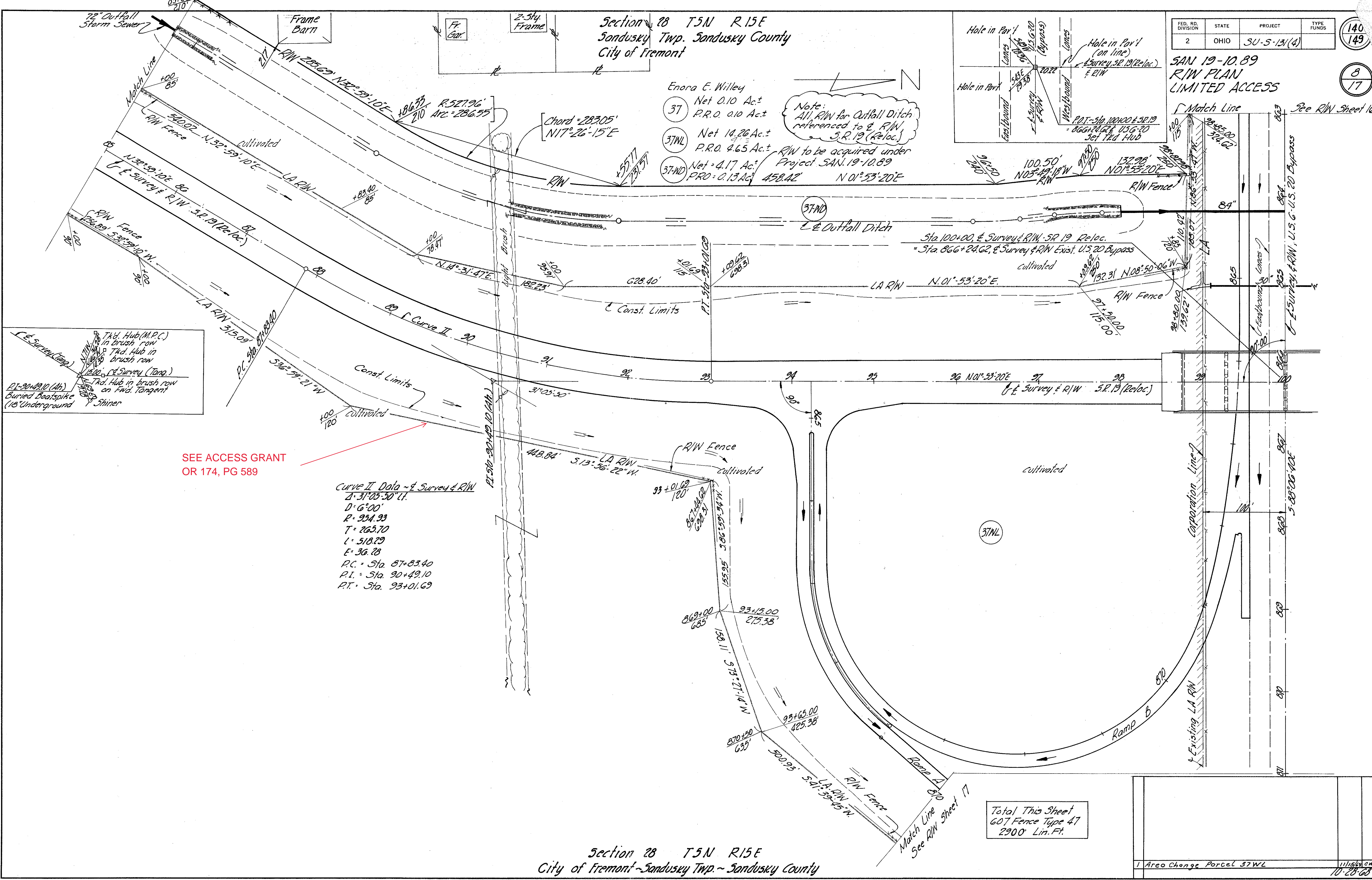
FED. RD. DIVISION	STATE	PROJECT	TYPE FUNDS
2	OHIO	SU-5-131(4)	

SAN 19-10.89
R/W PLAN
LIMITED ACCESS

140
149
8
17

Section 28 T5N R15E
Sandusky Twp. Sandusky County
City of Fremont

- Enora E. Willey
- 37 Net 0.10 Ac.
P.R.O. 0.10 Ac.
 - 37NL Net 14.26 Ac.
P.R.O. 4.65 Ac.
 - 37ND Net 4.17 Ac.
P.R.O. 0.13 Ac.
- Note: All R/W for Outfall Ditch referenced to E. R/W S.R. 19 (Reloc.)
R/W to be acquired under Project SAN. 19-10.89



SEE ACCESS GRANT
OR 174, PG 589

Curve II Data ~ E. Survey & R/W
 2° 31' 05.50" LL
 D=6° 00'
 R=954.93
 T=263.70
 L=518.29
 E=36.28
 P.C.=Sta. 87+83.40
 P.I.=Sta. 90+49.10
 P.T.=Sta. 93+01.69

Total This Sheet
607 Fence Type 47
2900' Lin. Ft.

Section 28 T5N R15E
City of Fremont ~ Sandusky Twp. ~ Sandusky County

Scanned July 14, 2017

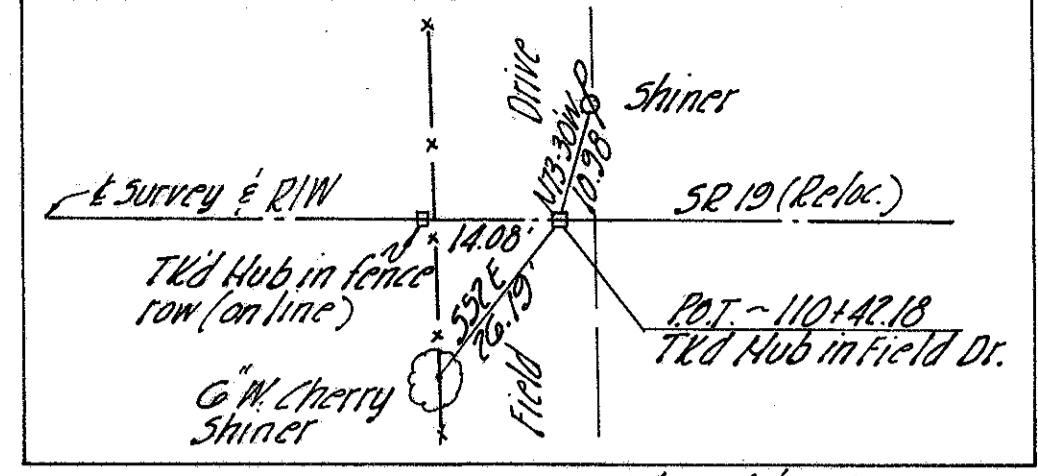
FED. RD. DIVISION	STATE	PROJECT	TYPE FUNDS
2	OHIO	5U-5-131(4)	

141
149

JAN 19-10.89
R/W PLAN
LIMITED ACCESS

9
17

Section 28 T5N R15E
Sandusky Twp. Sandusky County

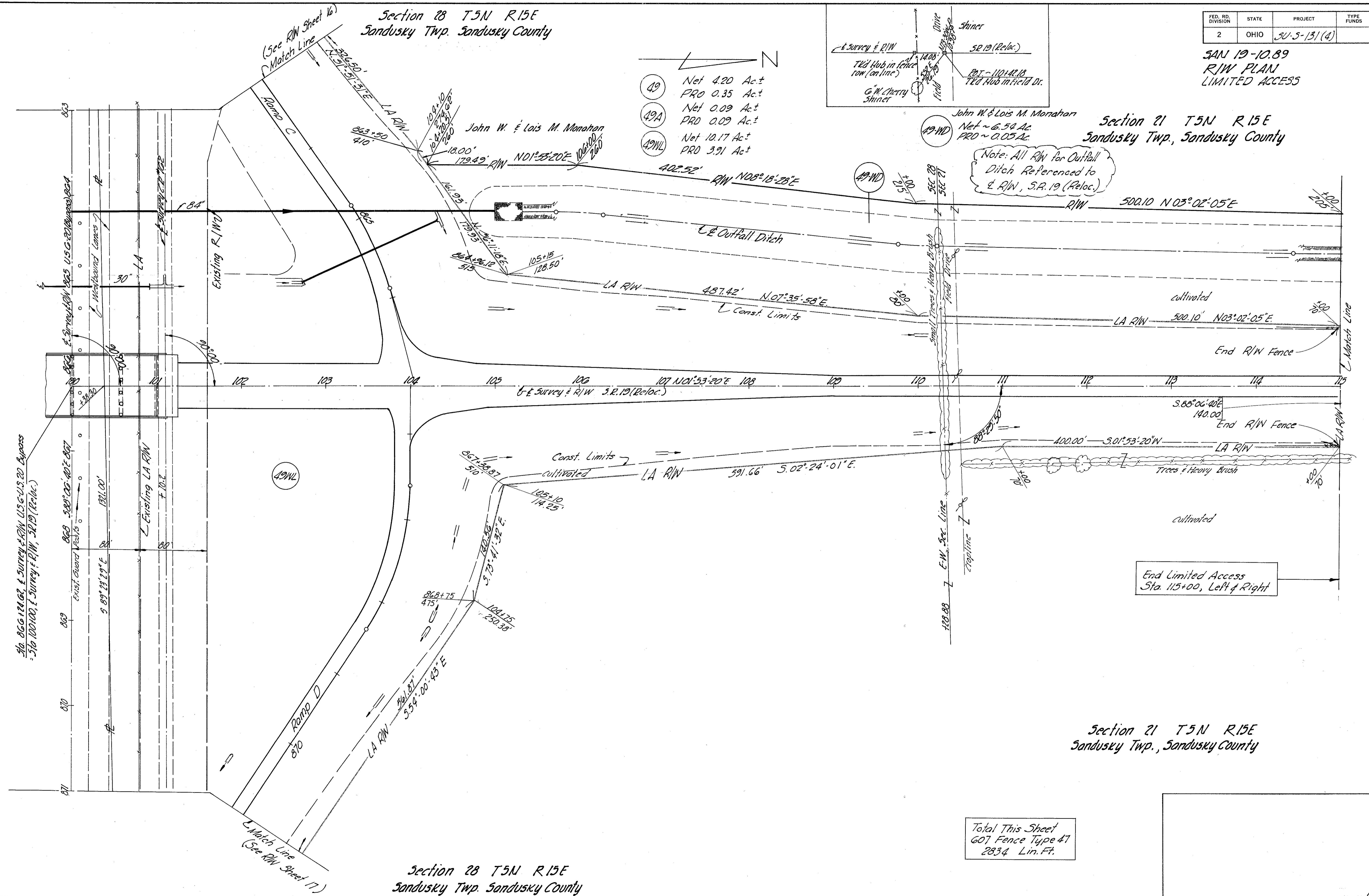


- 49 Net 4.20 Ac.±
PRD 0.35 Ac.±
- 49A Net 0.09 Ac.±
PRD 0.09 Ac.±
- 49WL Net 10.17 Ac.±
PRD 3.91 Ac.±

Section 21 T5N R15E
Sandusky Twp., Sandusky County

John W. & Lois M. Monahan
Net ~ 6.54 Ac.
PRD ~ 0.05 Ac.

Note: All R/W for Outfall Ditch Referenced to E R/W, S.R. 19 (Reloc.)



Sta. 866+24.02, E Survey & R/W US 6-US 20 Bypass
- Sta. 100+00, E Survey & R/W, SR 19 (Reloc.)

Total This Sheet
607 Fence Type 47
2834 Lin. Ft.

Section 28 T5N R15E
Sandusky Twp. Sandusky County

Section 21 T5N R15E
Sandusky Twp., Sandusky County

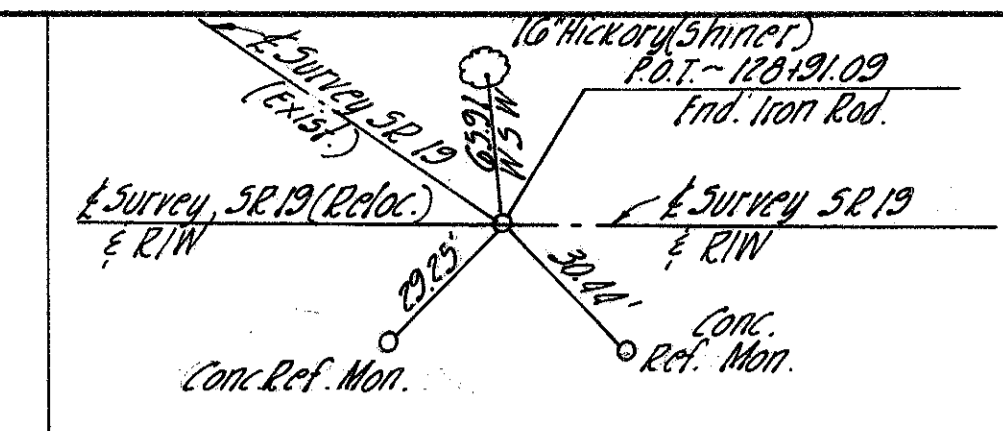
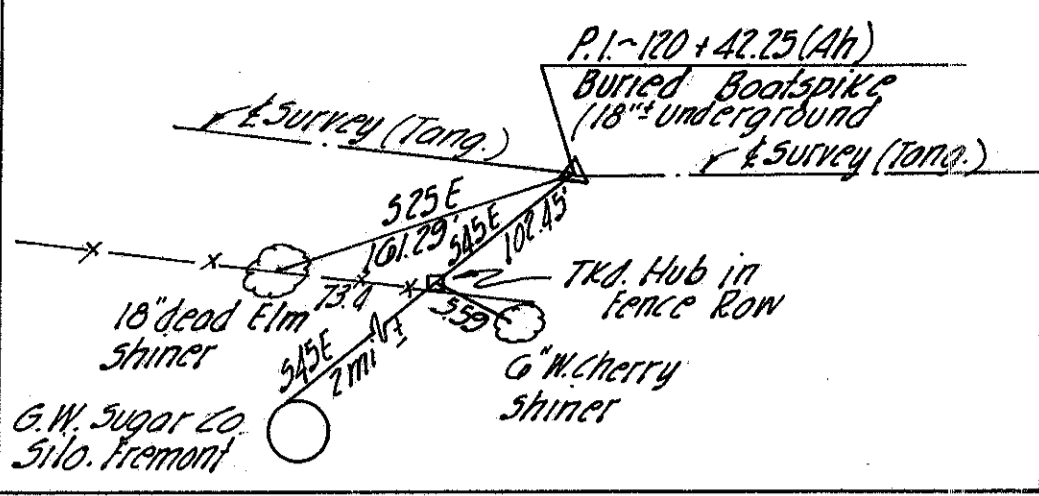
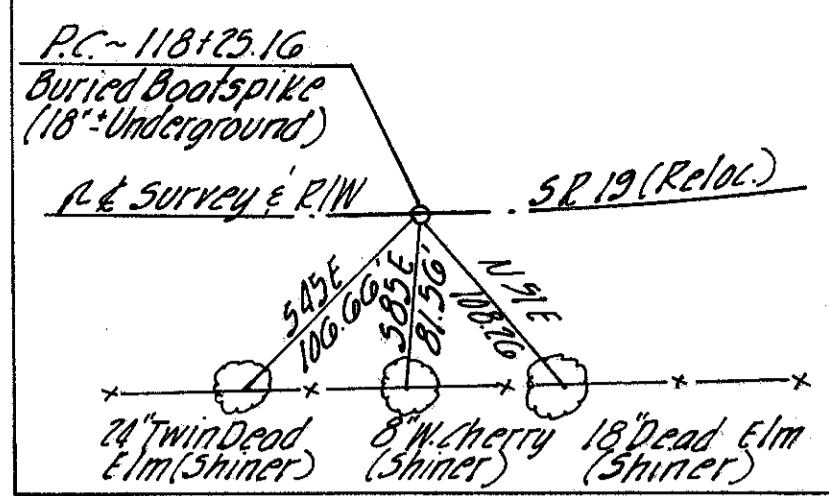
Section 21 T5N R15E
Sandusky Twp, Sandusky County

FED. RD. DIVISION	STATE	PROJECT	TYPE FUNDS
2	OHIO	SR-5-131(4)	

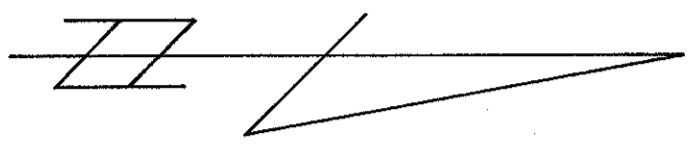
SAN 19-10.89
R/W PLAN

142
149

10
17

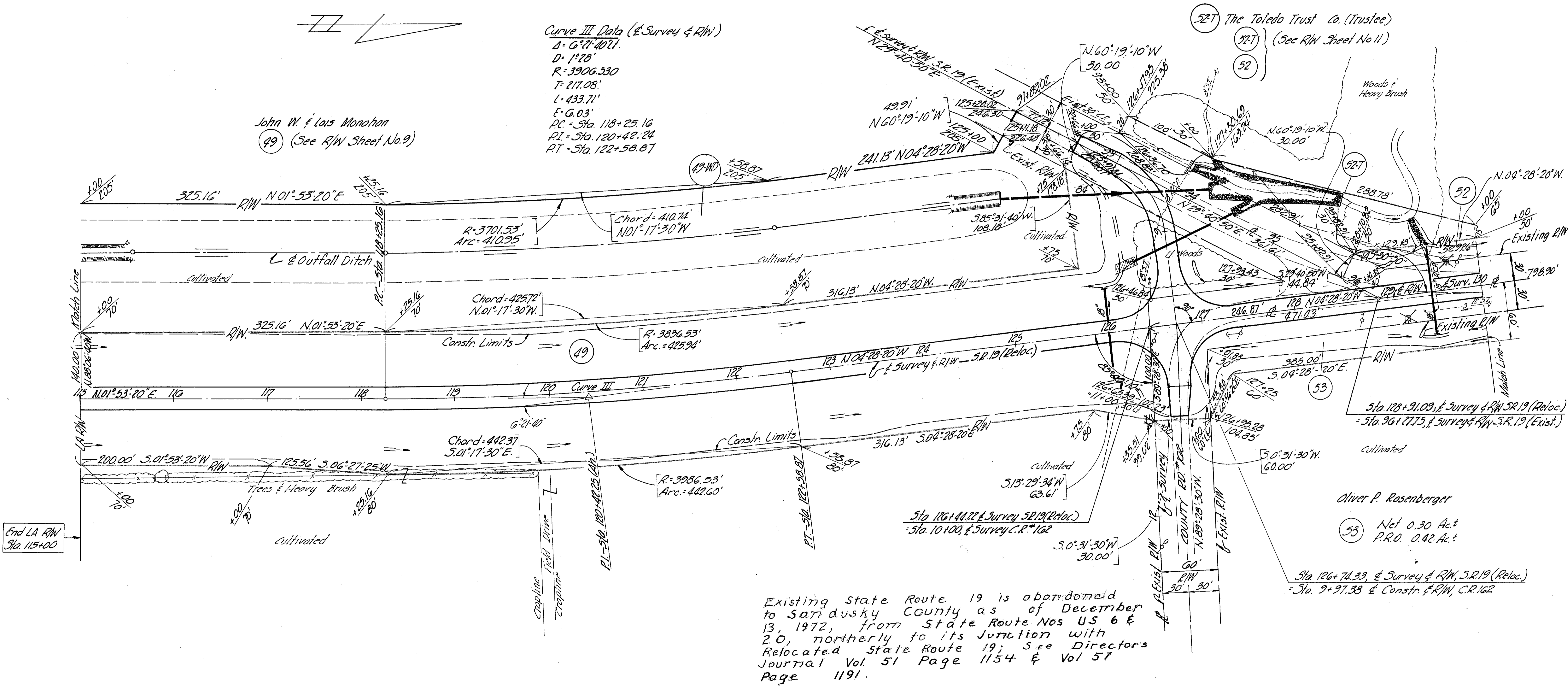


Note:
All R/W for Outfall Ditch
referenced to & R/W, SR 19 (Reloc.)



John W. & Lois Monahan
49 (See R/W Sheet No. 9)

Curve III Data (& Survey & R/W)
 $\Delta = 6^{\circ}17'40.71''$
 $D = 1^{\circ}28'$
 $R = 3906.530$
 $T = 217.08'$
 $L = 433.71'$
 $E = 6.03'$
 $PC = Sta. 118+25.16$
 $PI = Sta. 120+42.24$
 $PT = Sta. 122+58.87$



Section 21 T5N R15E
Sandusky Twp, Sandusky County

10-28-68

July 1977

Section 21 T5N R15E
Sandusky Twp., Sandusky County

Curve I Data (E R/W)

A = 7°30' Lt
D = 4°29'57"
R = 1273.51'
T = 83.47'
L = 166.70'
E = 2.73'
P.C. = Sta. 139+19.39
P.L. = Sta. 140+02.86
P.C.C. = Sta. 140+86.09 (Back)
= Sta. 140+86.04 (Ahead)

Curve II Data (E Constr. & R/W)

A = 13°00' Lt
D = 6°00"
R = 954.93'
T = 108.80'
L = 216.67'
E = 6.18'
P.C.C. = Sta. 140+86.04 (Ahead)
P.L. = Sta. 141+94.84
P.C.C. = Sta. 143+02.71
P.L. = Sta. 143+86.18
P.T. = Sta. 144+69.41 (Back)
= Sta. 144+69.36 (Ahead)

Curve III Data (E R/W)

A = 7°30' Lt
D = 4°29'57"
R = 1273.51'
T = 83.47'
L = 166.70'
E = 2.73'
P.C.C. = Sta. 143+02.71
P.L. = Sta. 143+86.18
P.T. = Sta. 144+69.41 (Back)
= Sta. 144+69.36 (Ahead)

FED. RD. DIVISION	STATE	PROJECT	TYPE FUNDS
2	OHIO	SU-5-131(4)	

143
149

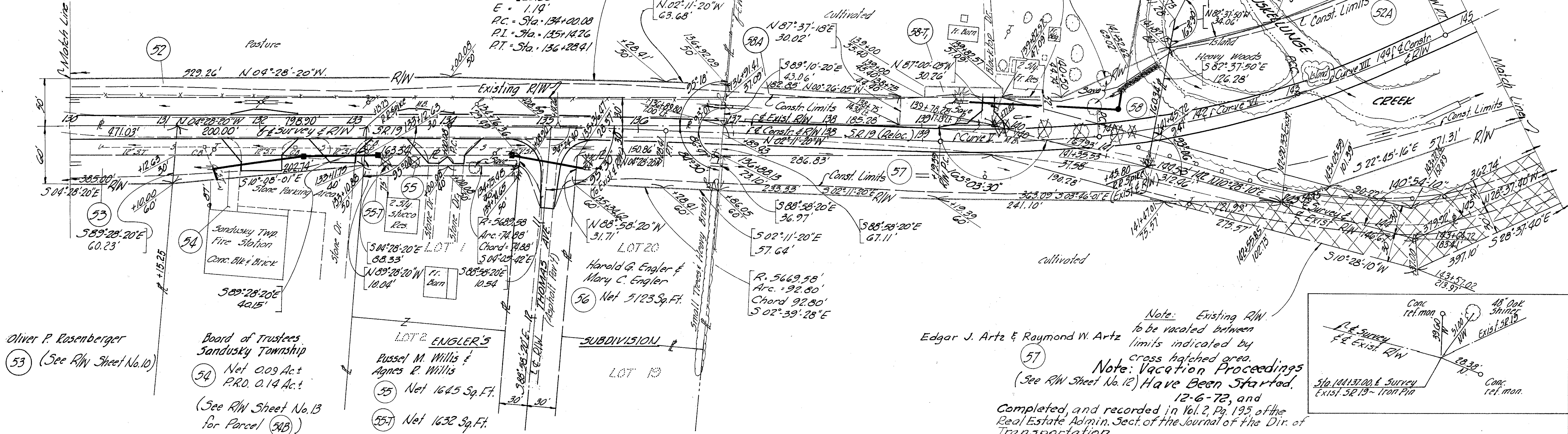
SAN 19-10.89
R/W PLAN

11
17

The Toledo Trust Co. (Trustee)
52 Net 0.35 Ac.±
P.R.O. 0.58 Ac.±
57.7 Net 0.31 Ac.±

Curve IV Data ~ E Constr. & R/W
A = 2°17' Rt
D = 1°00"
R = 5729.58'
T = 114.18'
L = 228.33'
E = 1.14'
P.C. = Sta. 134+00.08
P.L. = Sta. 135+14.76
P.T. = Sta. 136+28.41

Clara R. Gregory
58A Net 0.03 Ac.±
P.R.O. 0.13 Ac.±
58.7 Net 0.02 Ac.±
58 Net 0.15 Ac.±
P.R.O. 0.12 Ac.±
58.7 Net 0.22 Ac.±
58X Net 0.13 Ac.±



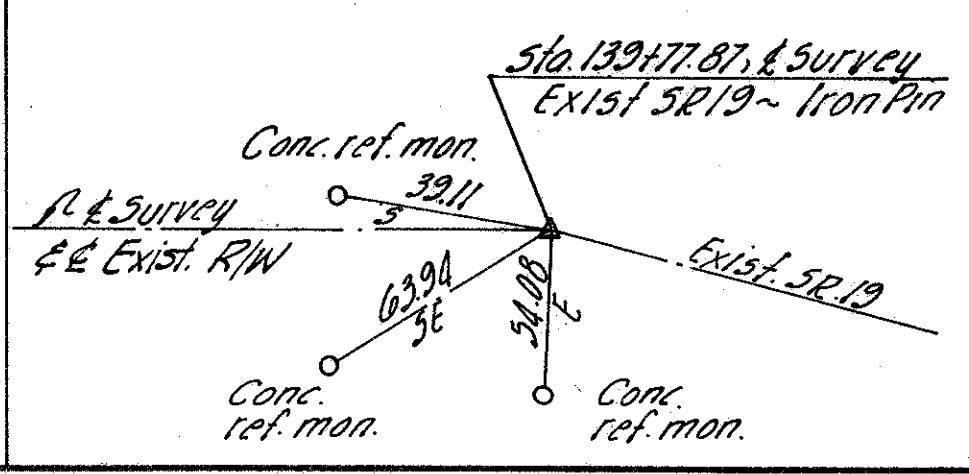
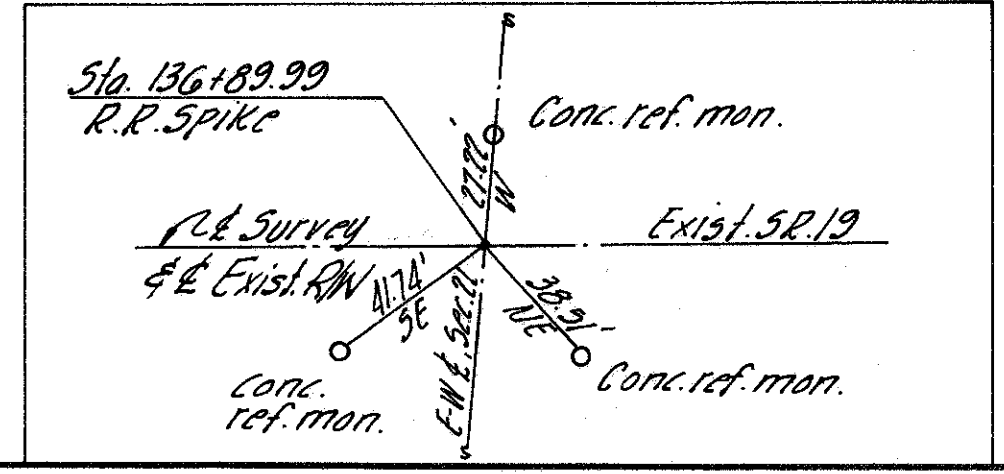
Oliver P. Rosenberger
53 (See R/W Sheet No. 10)

Board of Trustees
Sandusky Township
54 Net 0.09 Ac.±
P.R.O. 0.14 Ac.±
(See R/W Sheet No. 13
for Parcel 54B)

LOT 2 ENGLER'S
Russel M. Willis &
Agnes R. Willis
55 Net 1645 Sq. Ft.
55.7 Net 1632 Sq. Ft.

Harold G. Engler &
Mary C. Engler
56 Net 5123 Sq. Ft.

Edgar J. Artz & Raymond W. Artz
57
Note: Existing R/W to be vacated between limits indicated by cross hatched area.
Note: Vacation Proceedings (See R/W Sheet No. 12) Have Been Started, 12-6-72, and Completed, and recorded in Vol. 2, Pg. 195 of the Real Estate Admin. Sect. of the Journal of the Dir. of Transportation.



Section 21 T5N R15E
Sandusky Twp. Sandusky County

Rev.	Date	Remarks
1	5-22-72	Vacation Proceedings Noted
2	1-27-68	Parcel 57 Owner Change
3		

10-28-68

Curve III Data (~& R/W)	Curve II Data (~& Constr. & R/W)	Curve I Data (~& R/W)
$\Delta = 7^{\circ}30' R$	$\Delta = 17^{\circ}00' R$	$\Delta = 7^{\circ}30' R$
$D = 4^{\circ}29'57''$	$D = 6^{\circ}00'$	$D = 4^{\circ}29'57''$
$R = 1273.51$	$R = 954.93$	$R = 1273.51$
$T = 83.47$	$T = 142.72$	$T = 83.47$
$L = 166.70$	$L = 283.33$	$L = 166.70$
$E = 2.73$	$E = 10.61$	$E = 2.73$
P.C. = Sta. 146+36.06	P.C. = Sta. 148+02.71 (Ahead)	P.C. = Sta. 150+86.04
P.I. = Sta. 147+19.53	P.I. = Sta. 149+45.43	P.I. = Sta. 151+69.51
P.C.C. = Sta. 148+02.76 (Back)	P.C.C. = Sta. 150+86.04	P.T. = Sta. 152+52.74 (Back)
= Sta. 148+02.71 (Ahead)		= Sta. 152+52.69 (Ahead)

Section 21 T5N R15E
Sandusky Twp. Sandusky County

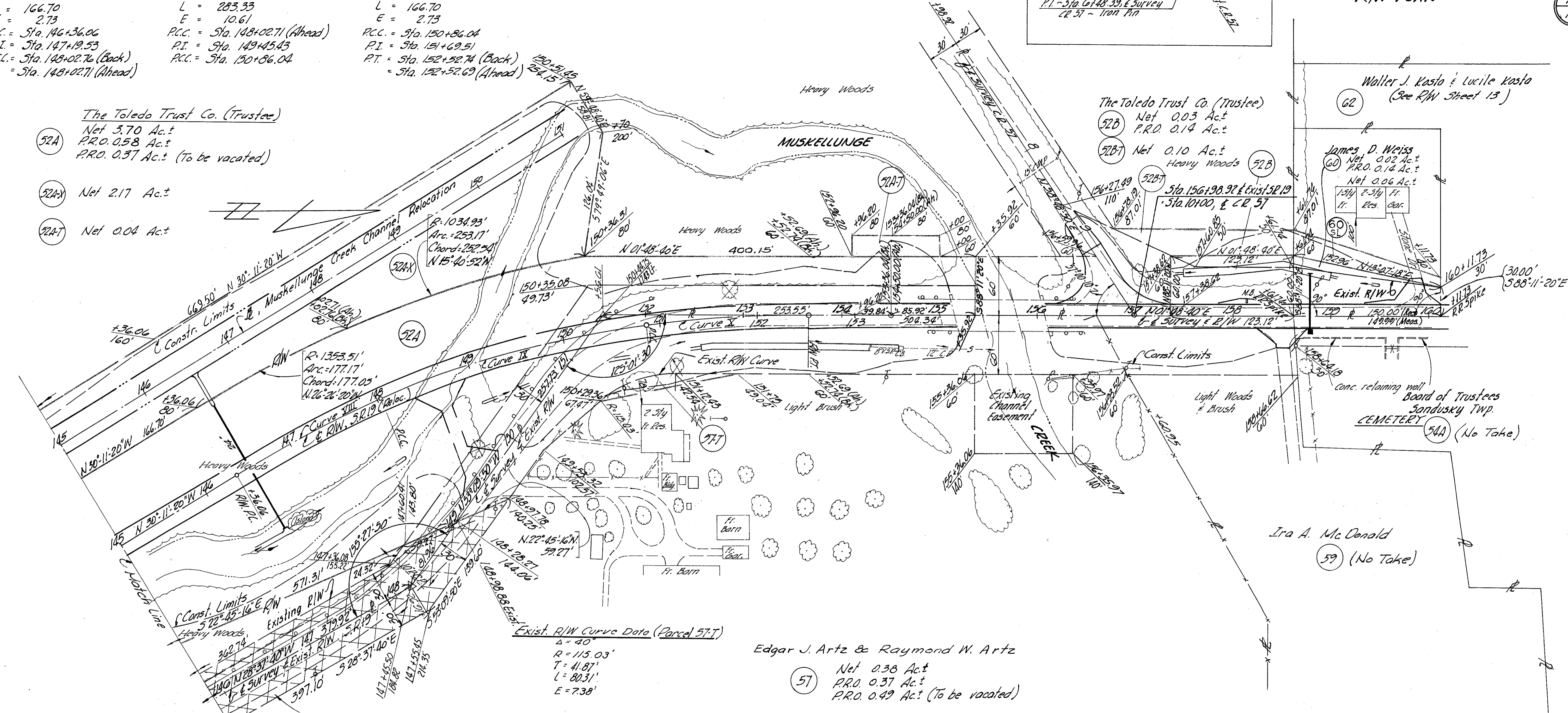
FED. RD. DIVISION	STATE	PROJECT	TYPE FUNDS
2	OHIO	SU-5-131(4)	

144
149

12
17

SAN 19-10.89
R/W PLAN

- The Toledo Trust Co. (Trustee)
- 52A Net 3.70 Ac.t
P.R.O. 0.58 Ac.t
P.R.O. 0.37 Ac.t (To be vacated)
 - 52A-X Net 2.17 Ac.t
 - 52A-T Net 0.04 Ac.t

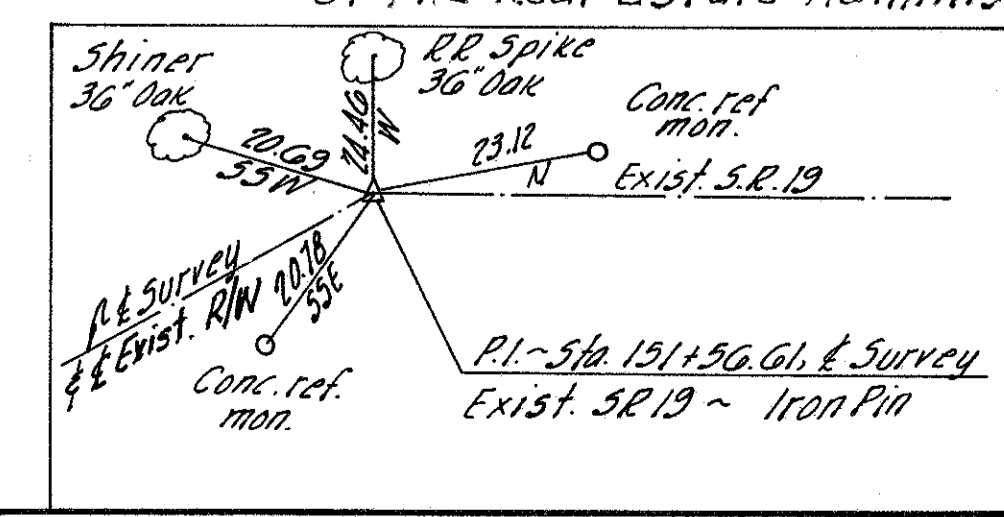
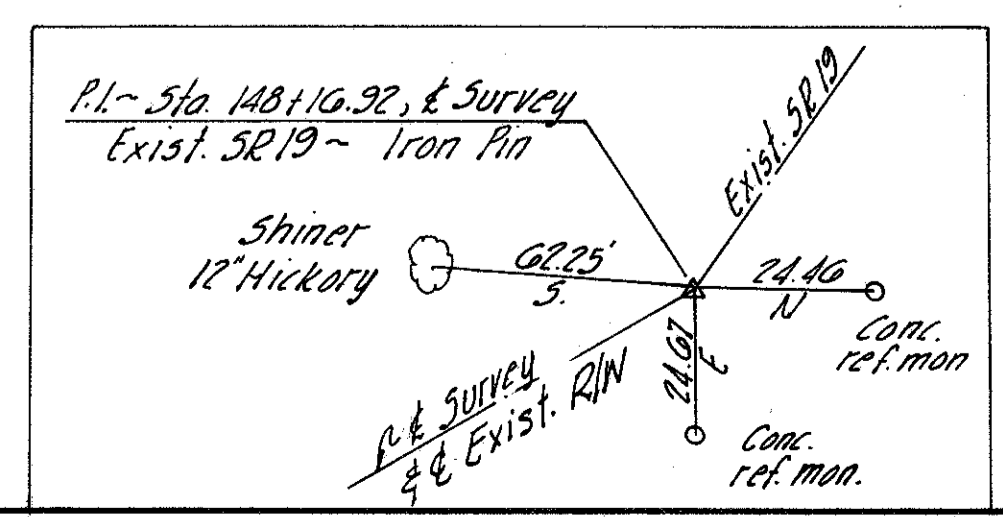


Note
Existing R/W to be vacated
between limits indicated by
cross hatched area
Note: Vacated Proceedings
started 12-6-72, Completed, and Recorded in Vol. 2, Pg. 195
of the Real Estate Administration Section of the Journal of
the Director of Transportation.

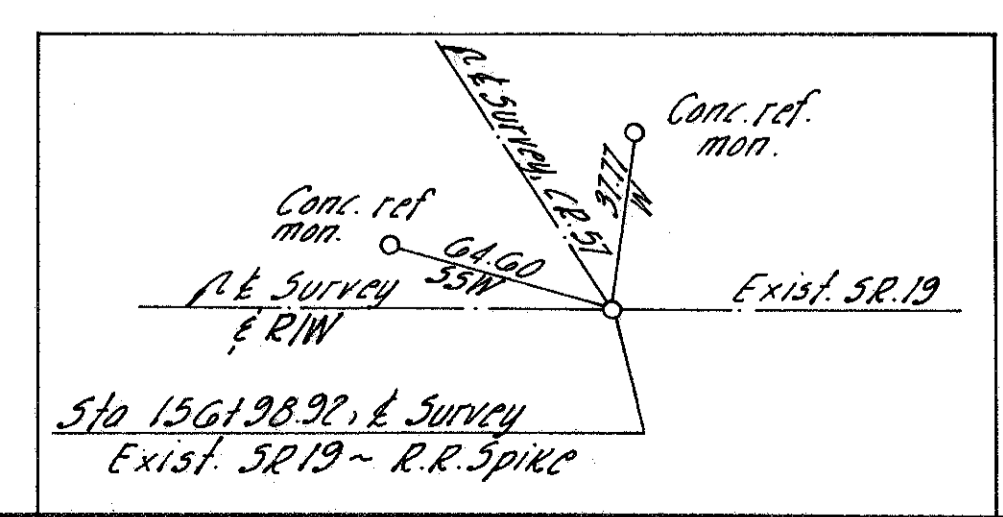
Edgar J. Artz & Raymond W. Artz

- 57 Net 0.38 Ac.t
P.R.O. 0.37 Ac.t
P.R.O. 0.49 Ac.t (To be vacated)
- 57T Net 0.04 Ac.t

(See R/W Sheet No. 13
for Parcel 57A)

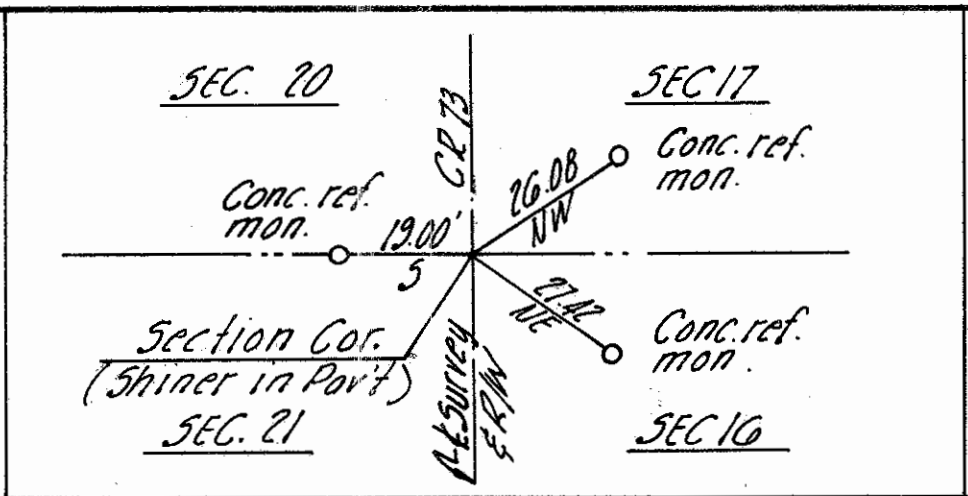


Section 21 T5N R15E
Sandusky Twp. Sandusky County



4	5-22-73	Vacation Proceedings Noted
3	8-13-69	Par 52A Ex. & Prop. R/W Line Changed
2	4-2-69	PAR 60-T CHANGED TO 60-SL C.E.S.
1	1-27-68	Par. 57, 57-T Owner Change 10-28-68

Section 21 T5N R15E
Sandusky Twp. Sandusky County



Section 16 T5N R15E
Sandusky Twp. Sandusky County

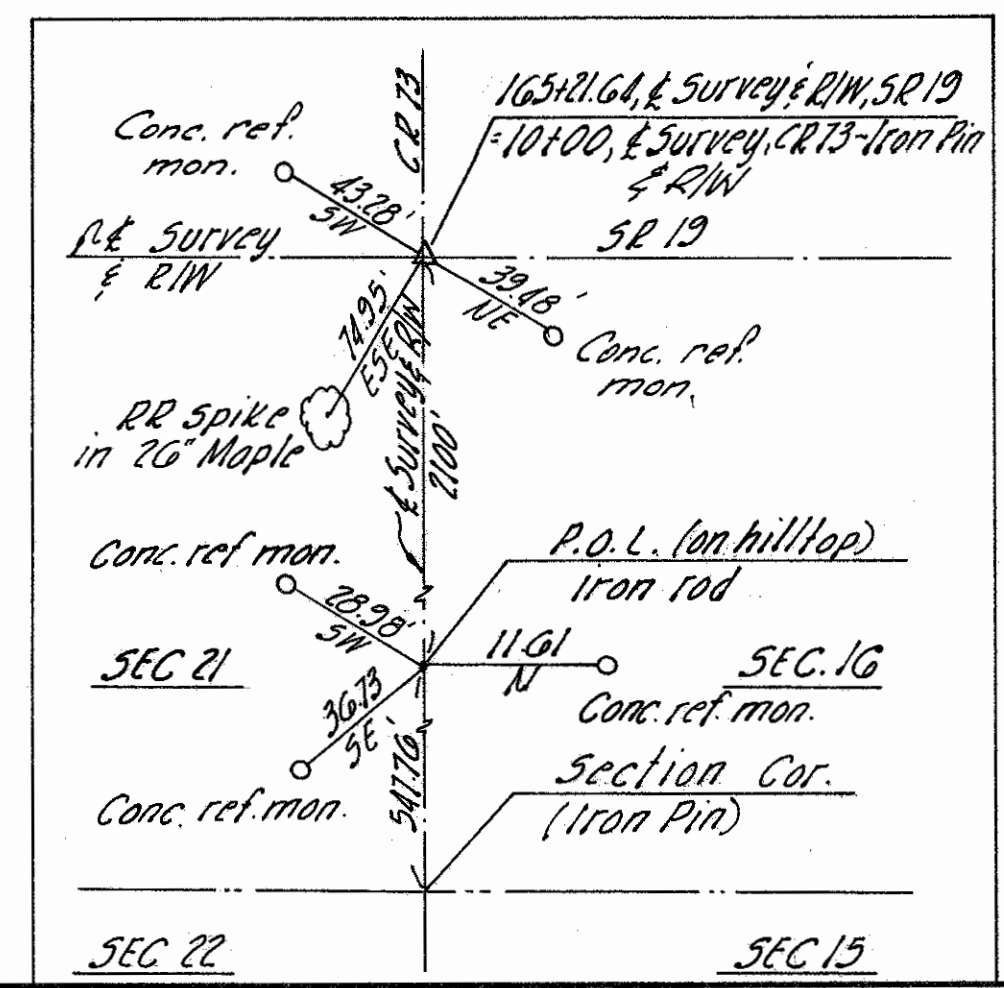
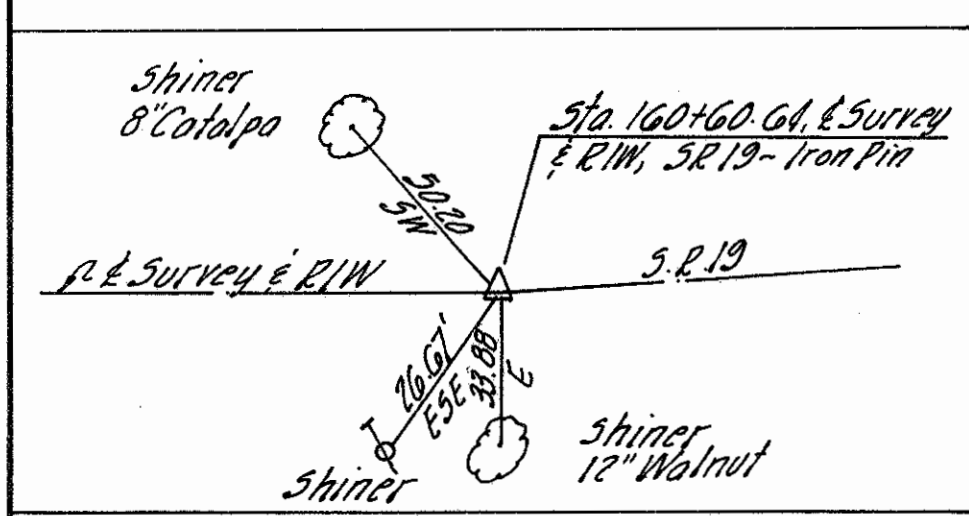
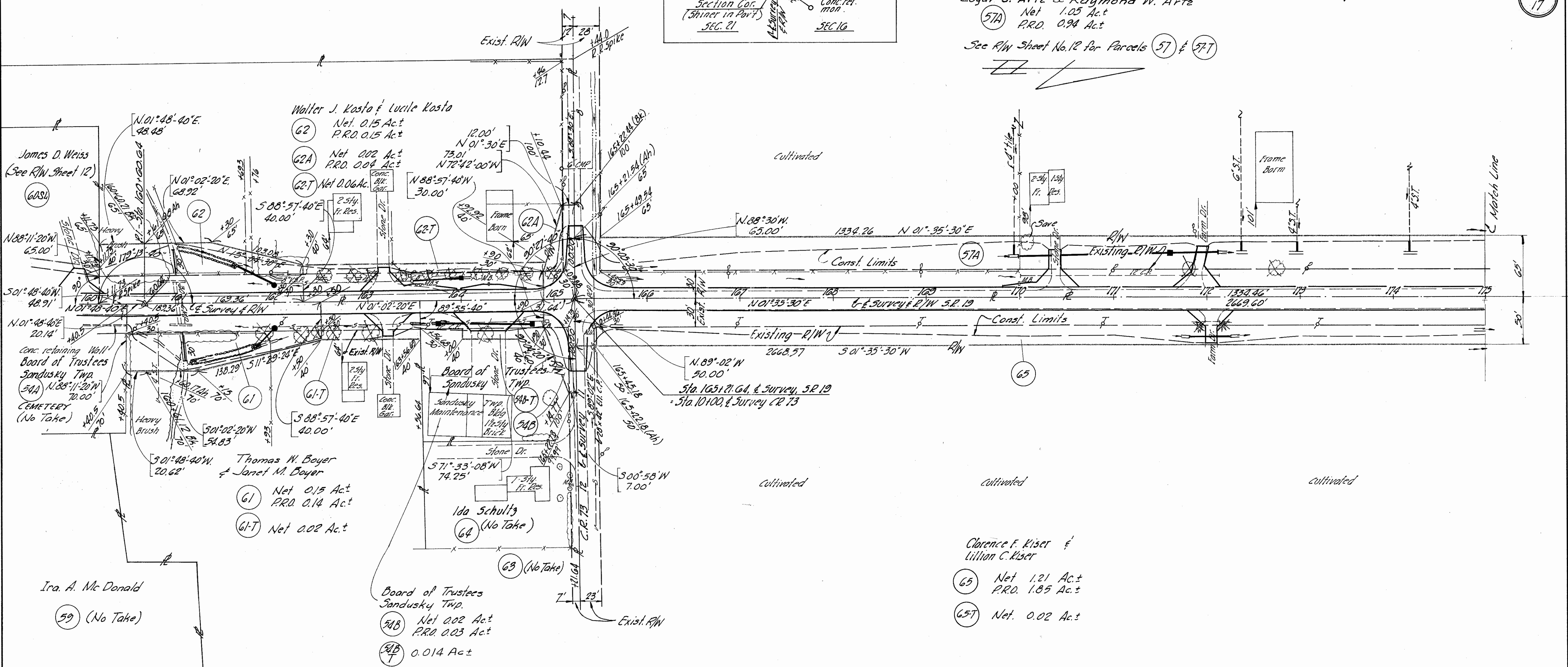
FED. RD. DIVISION	STATE	PROJECT	TYPE FUNDS
2	OHIO	SU-5-131(4)	

145
149

JAN 19-10.89
R/W PLAN

13
17

Edgar J. Artz & Raymond W. Artz
Net 1.05 Ac.
PRD. 0.94 Ac.
See R/W Sheet No. 12 for Parcels 57 & 57T



Section 21 T5N R15E
Sandusky Twp. Sandusky County

Section 16 T5N R15E
Sandusky Twp. Sandusky County

Rev.	Date	Remarks
3	4-2-69	Par. 60-T Changed to 60SL C.E.S.
2	1-27-69	Par. 57A Owner Change
1	11-26-68	Par. 54BWA changed to 54B-T

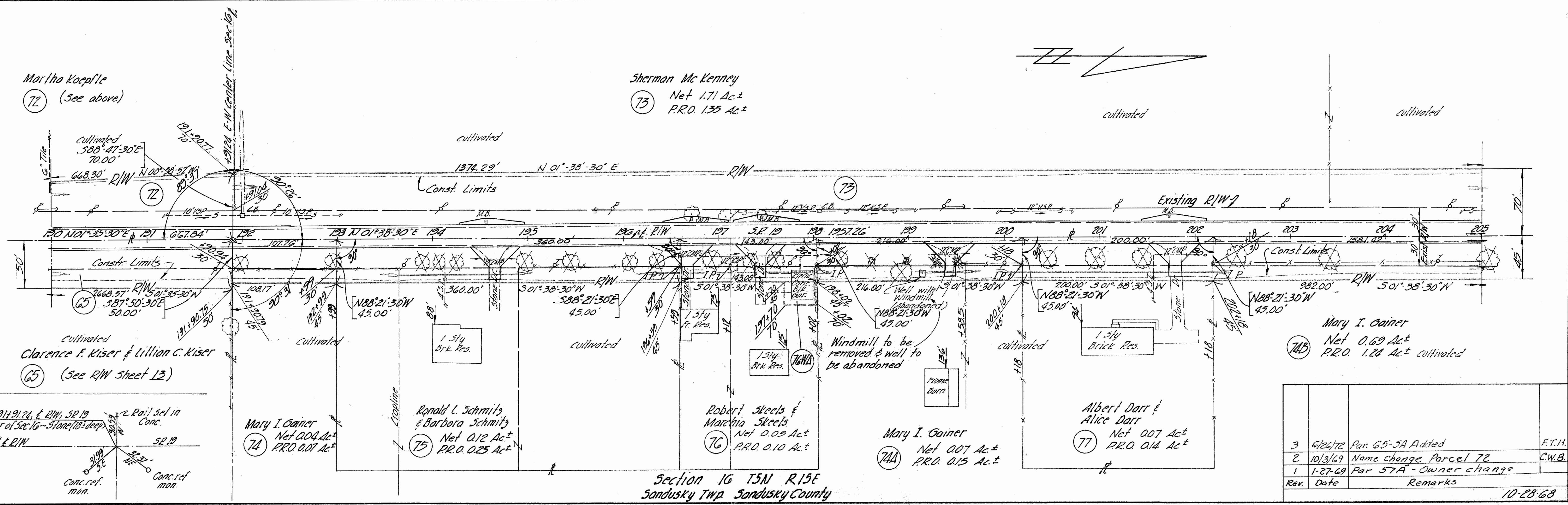
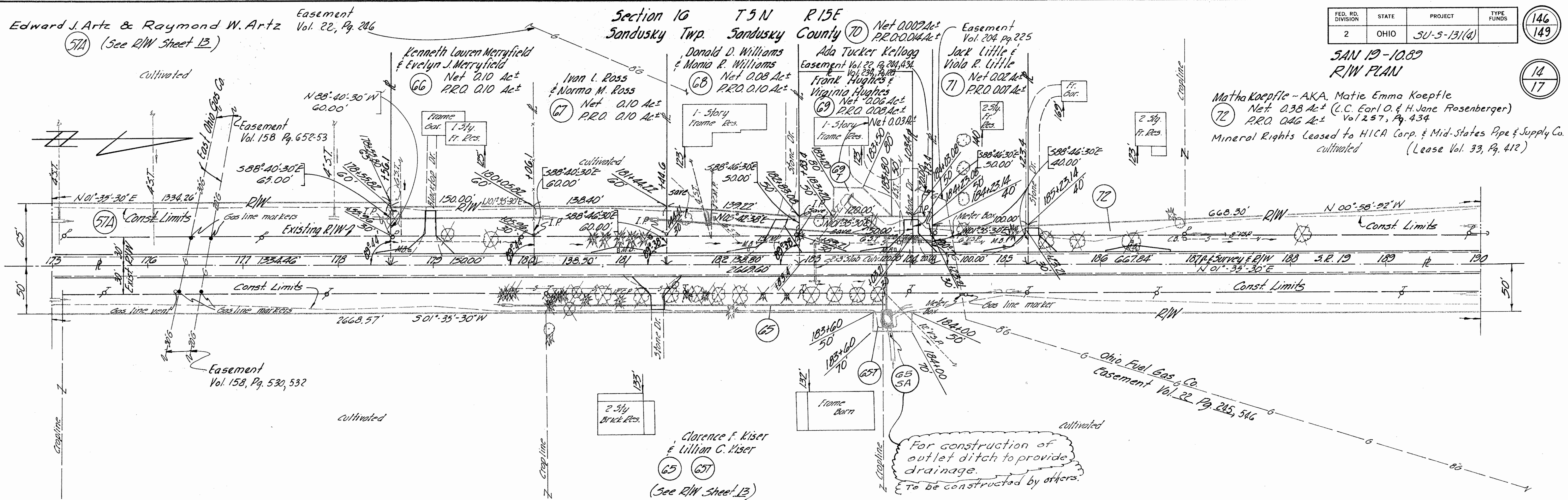
10-28-68

FED. RD. DIVISION	STATE	PROJECT	TYPE FUNDS
2	OHIO	5U-5-131(4)	

146
149

SAN 19-10.89
R/W PLAN

14
17



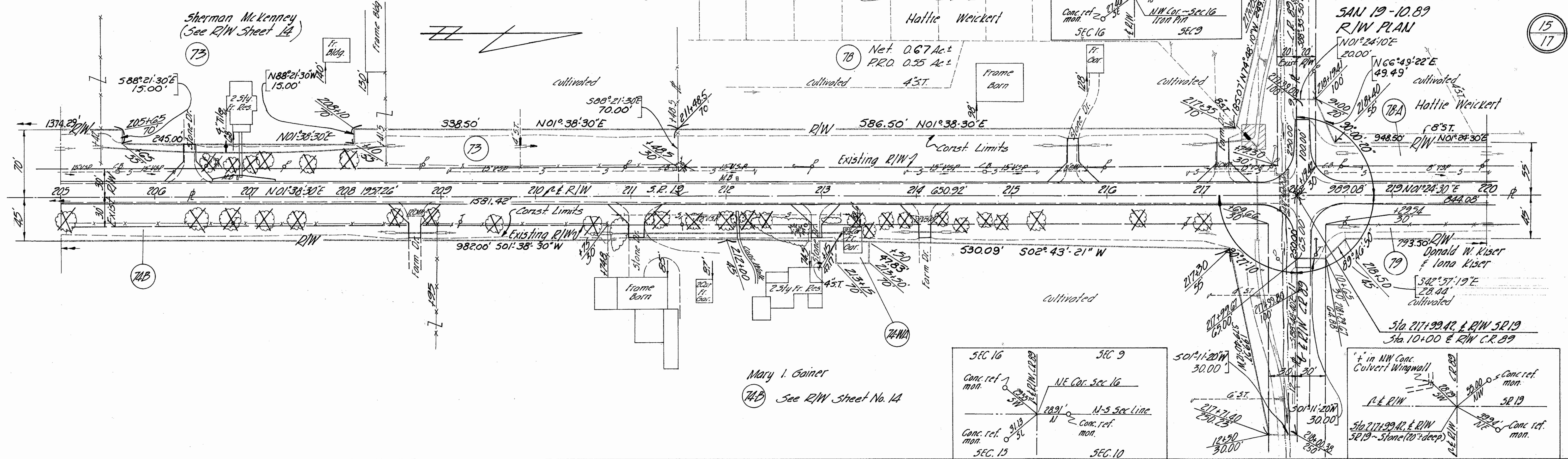
Section 16 T5N, R15E
Sandusky Twp Sandusky County

FED. RD. DIVISION	STATE	PROJECT	TYPE FUNDS
2	OHIO	SU-5-131(4)	

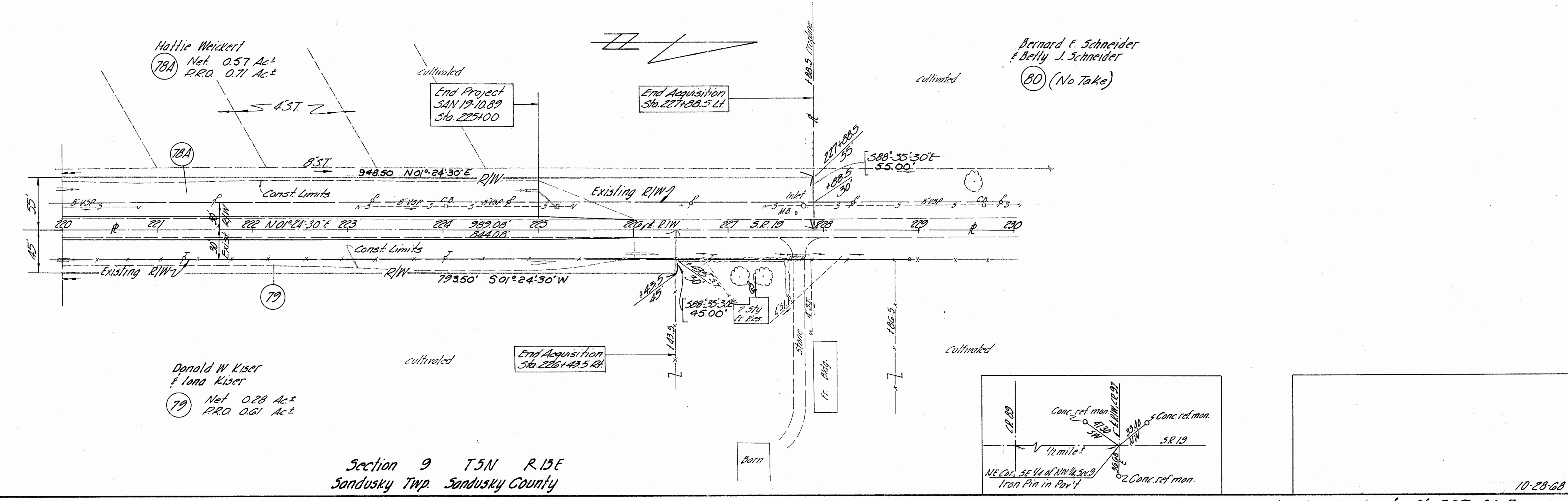
SAN 19-10-89
R/W PLAN
NO1°24'10"E
20.00'

N66°49'22"E
49.49'

147
149
15
17



Section 9 T5N, R15E
Sandusky Twp Sandusky County

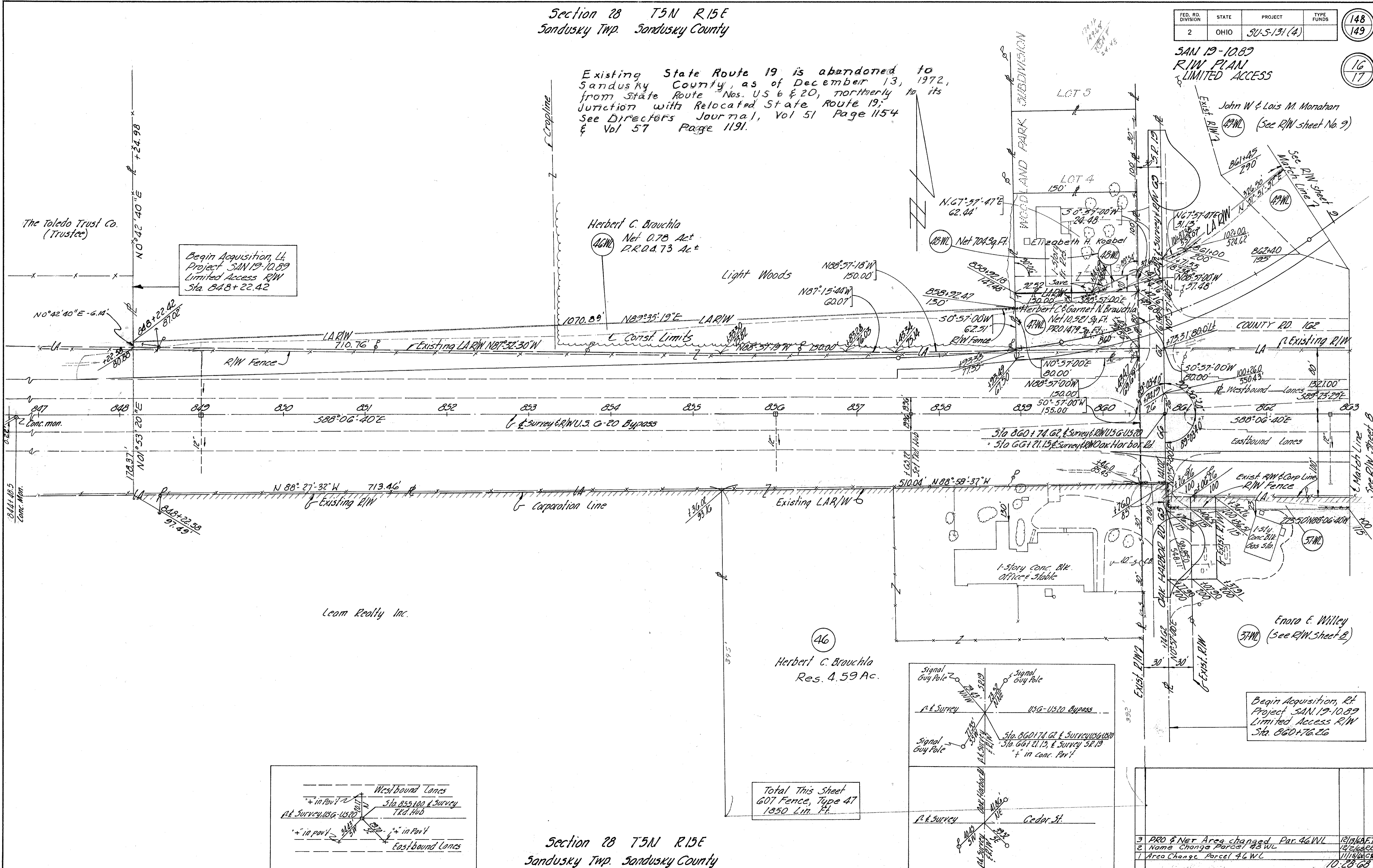


Section 28 T5N R15E
Sandusky Twp. Sandusky County

FED. RD. DIVISION	STATE	PROJECT	TYPE FUNDS
2	OHIO	SU-5-131(4)	148 149

SAN 19-10.89
R/W PLAN
LIMITED ACCESS

Existing State Route 19 is abandoned to Sandusky County, as of December 13, 1972, from State Route Nos. US 6 & 20, northerly to its junction with Relocated State Route 19; See Directors Journal, Vol 51 Page 1154 & Vol 57 Page 1191.

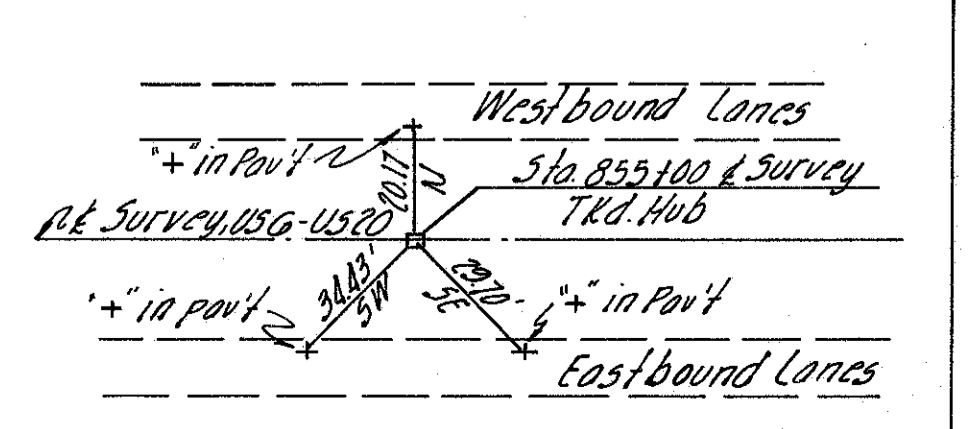


Begin Acquisition, Lt.
Project SAN 19-10.89
Limited Access R/W
Sta. 848+22.42

Herbert C. Brauchla
Net 0.78 Ac.
P.R.O.D. 73 Ac.±

Herbert C. Brauchla
Res. 4.59 Ac.

Begin Acquisition, Lt.
Project SAN 19-10.89
Limited Access R/W
Sta. 860+76.26



Total This Sheet
607 Fence, Type 47
1850 Lin. Ft.

Section 28 T5N R15E
Sandusky Twp. Sandusky County

3 PRO & Net Area changed	Par. 46 WL	12/14/89
2 Name Change Parcel 43 WL		12/2/89
1 Area Change Parcel 46 WL		11/15/89

10-28-89

FED. RD. DIVISION	STATE	PROJECT	TYPE FUNDS
2	OHIO	SU-5-13(4)	

149
149

17
17

Section 28 T5N R15E
Sandusky Twp. Sandusky County

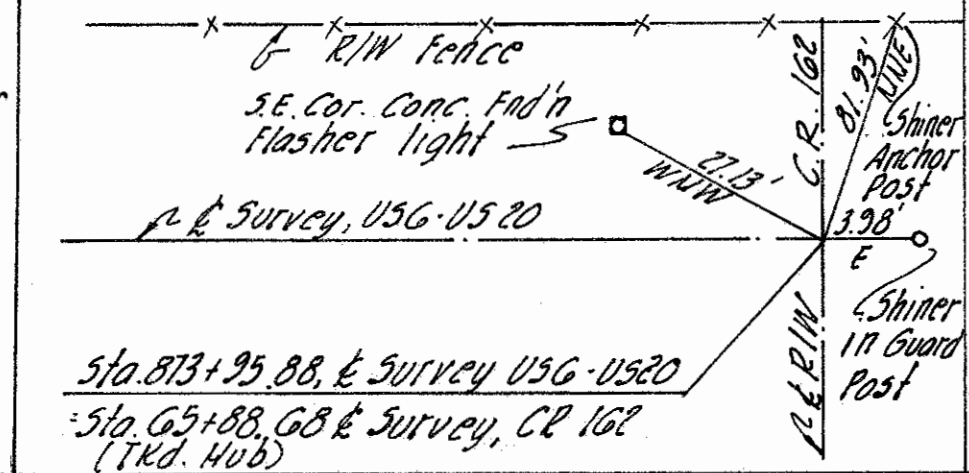
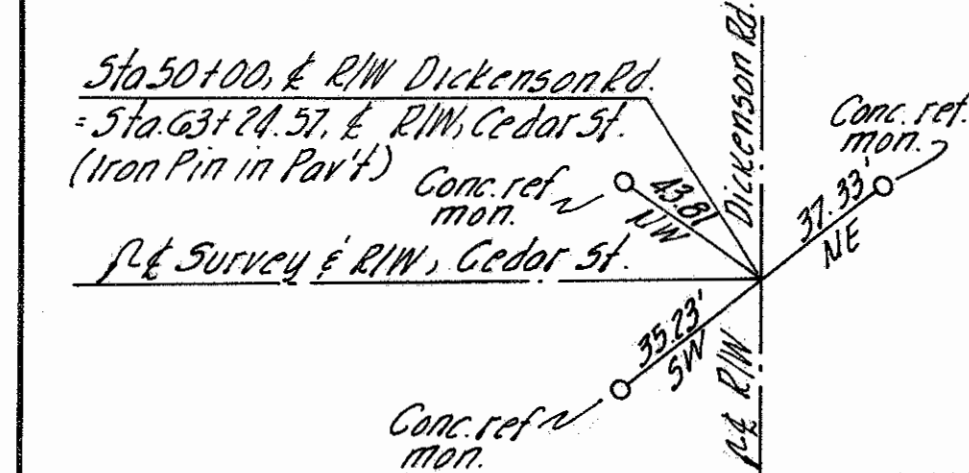
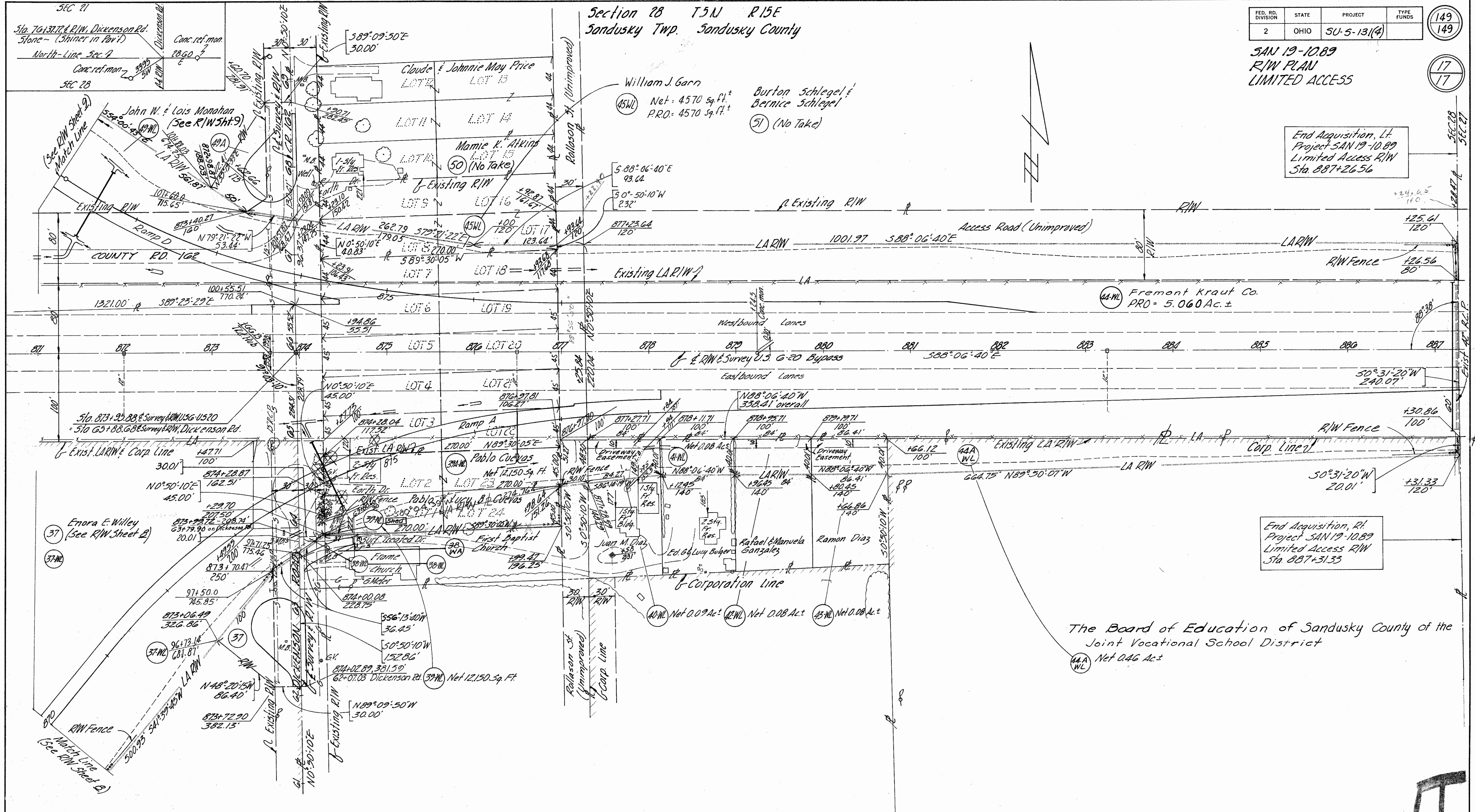
SAN 19-1089
R/W PLAN
LIMITED ACCESS

End Acquisition, Lt
Project SAN 19-1089
Limited Access R/W
Sta. 887+26.56

End Acquisition, Rt
Project SAN 19-1089
Limited Access R/W
Sta. 887+31.35

The Board of Education of Sandusky County of the
Joint Vocational School District
Net 0.46 Ac.±

Total This Street
607 Fence Type 47
3560 Lin. Ft.



Section 28 T5N R15E
City of Fremont, Sandusky County

3	Changed Owner & Dred Area, Par. 44-New 44A	12-17-88
2	Removed Shed Frm 39A-WL, Added one to 32	11-26-88
1	Added Parcel 38-WA	11-26-88