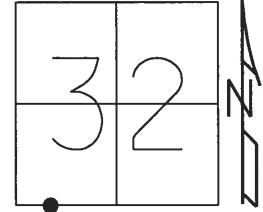


O.D.O.T. DISTRICT 2 SURVEY OFFICE (USE ONLY)

PERSONNEL \_\_\_\_\_ REFERENCE NO. 1 SHEET 1 OF 33

NOTES RHOADES \_\_\_\_\_ DATE 6-4-18 ROUTE SR 19  
 H.C. O'DONNELL \_\_\_\_\_ WEATHER CLOUDY COUNTY SANDUSKY  
 R.C. TRENKA \_\_\_\_\_ TEMP. 64° TOWNSHIP GREEN CREEK  
 \_\_\_\_\_ SECTION 32  
 \_\_\_\_\_ T 4 N R 16 E

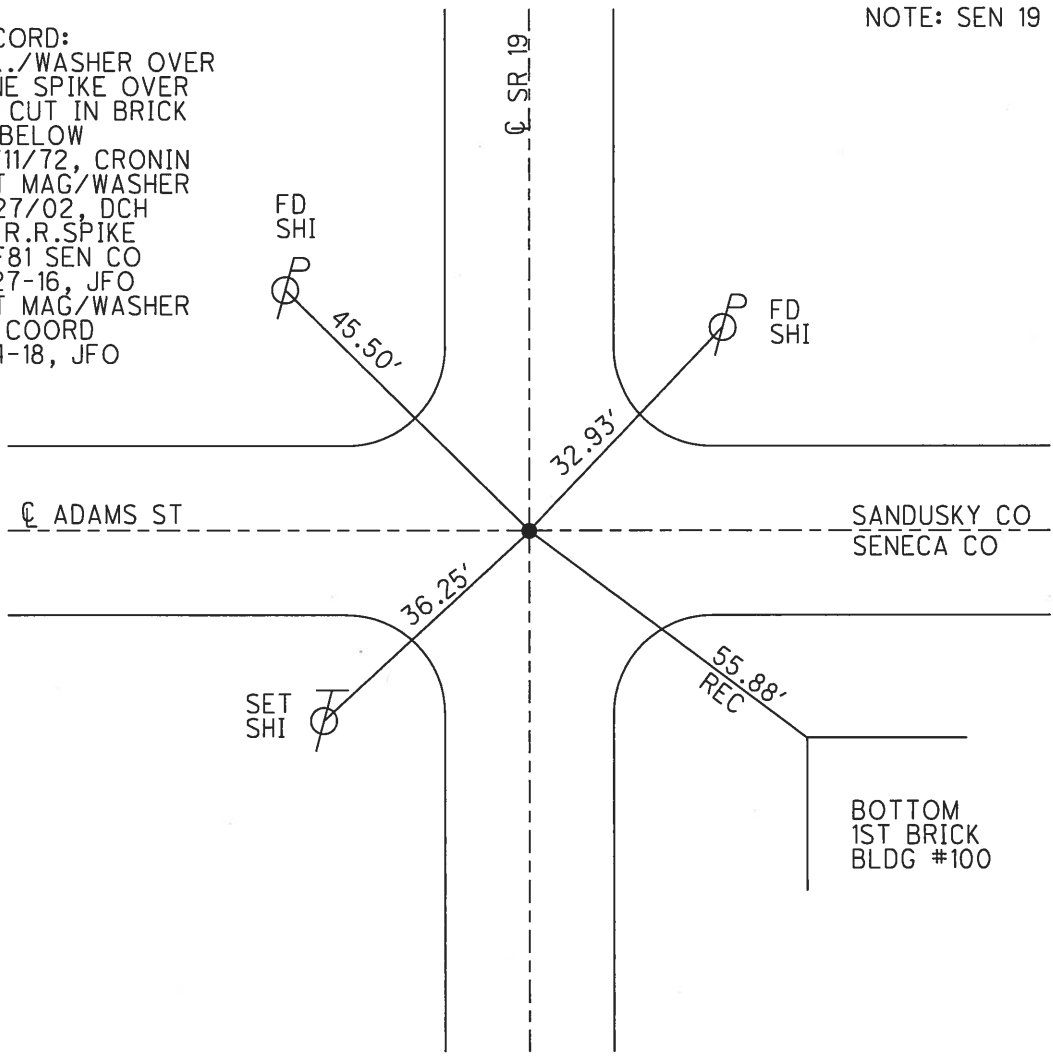
TYPE MONUMENT MAG/WASHER  
 ON SURFACE - ~~BELOW~~ ON  
~~LEFT - C~~ PAV'T - ~~RIGHT~~ ON  
TO EDGE PAVEMENT  
 S.L.M. 0+00



GRID: NORTHING: 579776.275 EASTING: 1816711.192

NOTE: SEN 19 REF 81

RECORD:  
 P.K./WASHER OVER  
 MINE SPIKE OVER  
 "X" CUT IN BRICK  
 6" BELOW  
 10/11/72, CRONIN  
 SET MAG/WASHER  
 8/27/02, DCH  
 FD R.R.SPIKE  
 REF81 SEN CO  
 6-27-16, JFO  
 SET MAG/WASHER  
 BY COORD  
 6-4-18, JFO

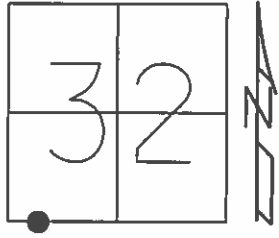


O.D.O.T. DISTRICT 2 SURVEY OFFICE (USE ONLY)

PERSONNEL \_\_\_\_\_ REFERENCE NO. 1 SHEET 1 OF 33

NOTES RHOADES DATE 4-14-16 ROUTE SR 19  
 H.C. O'DONNELL WEATHER CLOUDY COUNTY SANDUSKY  
 R.C. RHOADES TEMP. 40°F TOWNSHIP GREEN CREEK  
 \_\_\_\_\_ SECTION 32  
 \_\_\_\_\_ T 4 N R 16 E

TYPE MONUMENT MINE SPIKE  
 ON SURFACE - ~~BELOW~~ ON  
 LEFT - ☉ PAV'T - RIGHT ON  
- TO - EDGE PAVEMENT  
 S.L.M. 0+00



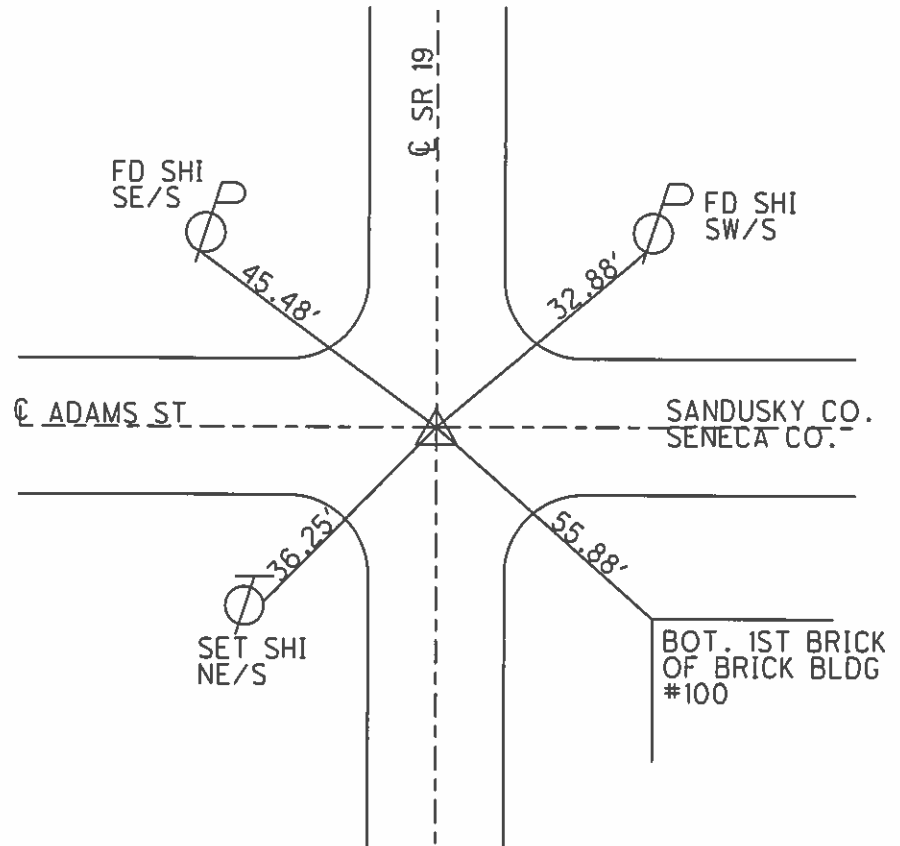
Grid: Northing: 579776.2733 Easting: 1816711.2156

RECORD:  
 $\Delta=00^{\circ}20'00''$   
 PK/WASHER  
 ATOP MINE SPIKE  
 ATOP "X" CUT IN BRICK  
 6" BELOW, 1985

SET MAG/WASHER  
 8-27-02, DCH

FD MINE SPIKE  
 GPS, REF1  
 4-14-16, JFO

NOT COVERED  
 9-2-16



O.D.O.T. DISTRICT 2 SURVEY OFFICE

PERSONNEL

REFERENCE NO. 1

SHEET 1 OF 31

NOTES ROUSOS

DATE 4-10-02

ROUTE SR 19

H.C. HOMAN

WEATHER SUNNY

COUNTY Sandusky

R.C. ROUSOS

TEMP. 50°

TOWNSHIP GREEN CRK

SECTION 32

T 4 N R 16 E

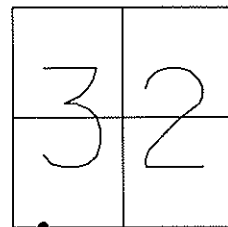
TYPE MONUMENT PK/Washer

ON SURFACE - ~~BELOW~~ On Surface

~~LEFT - C~~ PAV'T - RIGHT On Centerline

TO EDGE PAVEMENT

S.L.M. 0+00

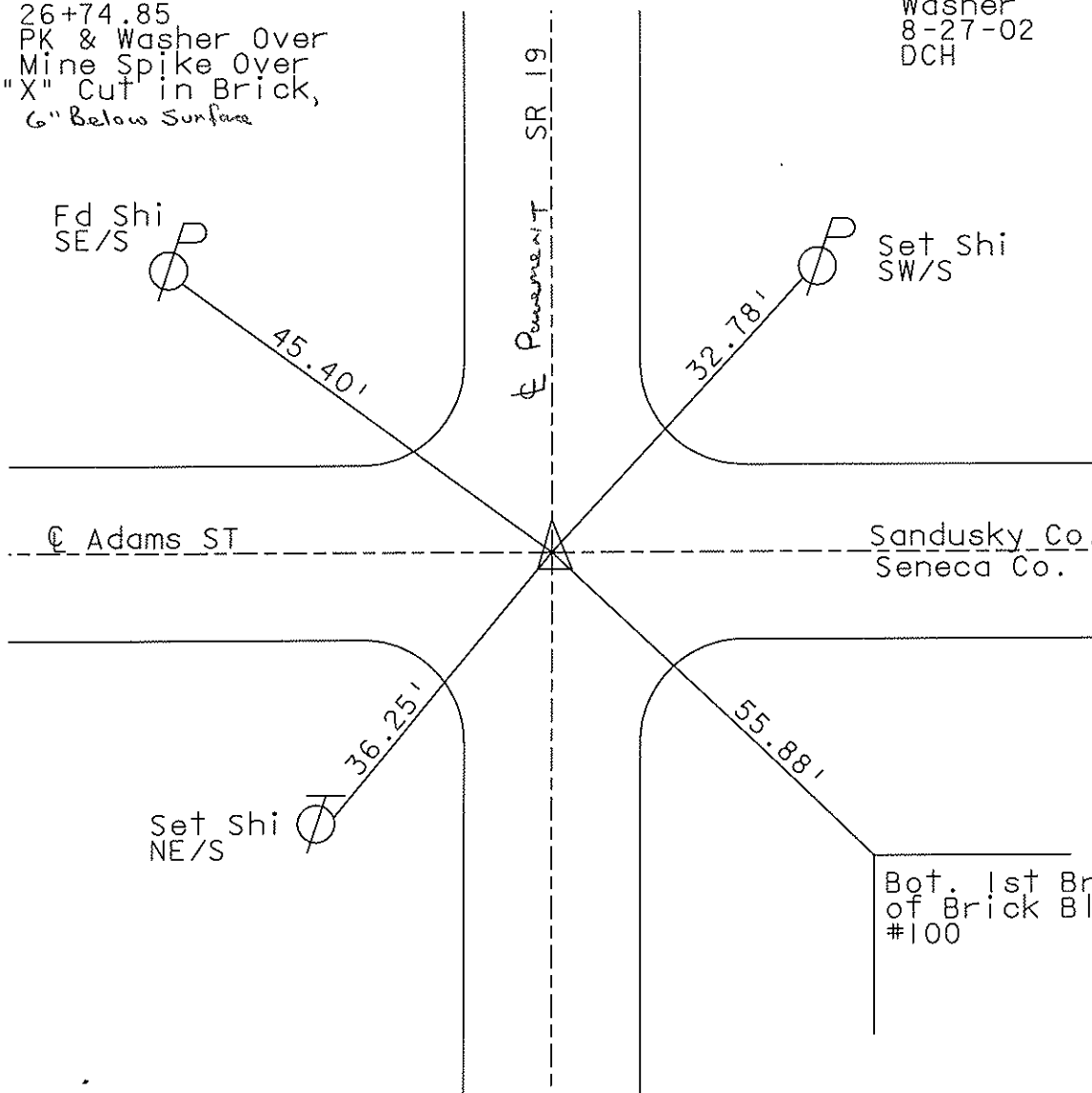


Record:  $\Delta = 00^\circ 20' 00''$  RT (REC)

1985

26+74.85  
PK & Washer Over  
Mine Spike Over  
"X" Cut in Brick,  
6" Below Surface

Set Mag Nail &  
Washer  
8-27-02  
DCH



Sandusky Co.  
Seneca Co.

Bot. 1st Brick  
of Brick Bldg  
#100

Resurfaced 2003

O.D.O.T. DISTRICT 2 SURVEY OFFICE

PERSONNEL

REFERENCE NO. 1

SHEET 1 OF 3

NOTES Cranin

DRAWN 12/20/85

H.C. Ripple

DATE 9/25/85

ROUTE #19

R.C. Barbour

WEATHER overcast

COUNTY Sandusky

Geyman

TEMP. 71°

TOWNSHIP Green Creek

SECTION #32

T 4 N R 16 E

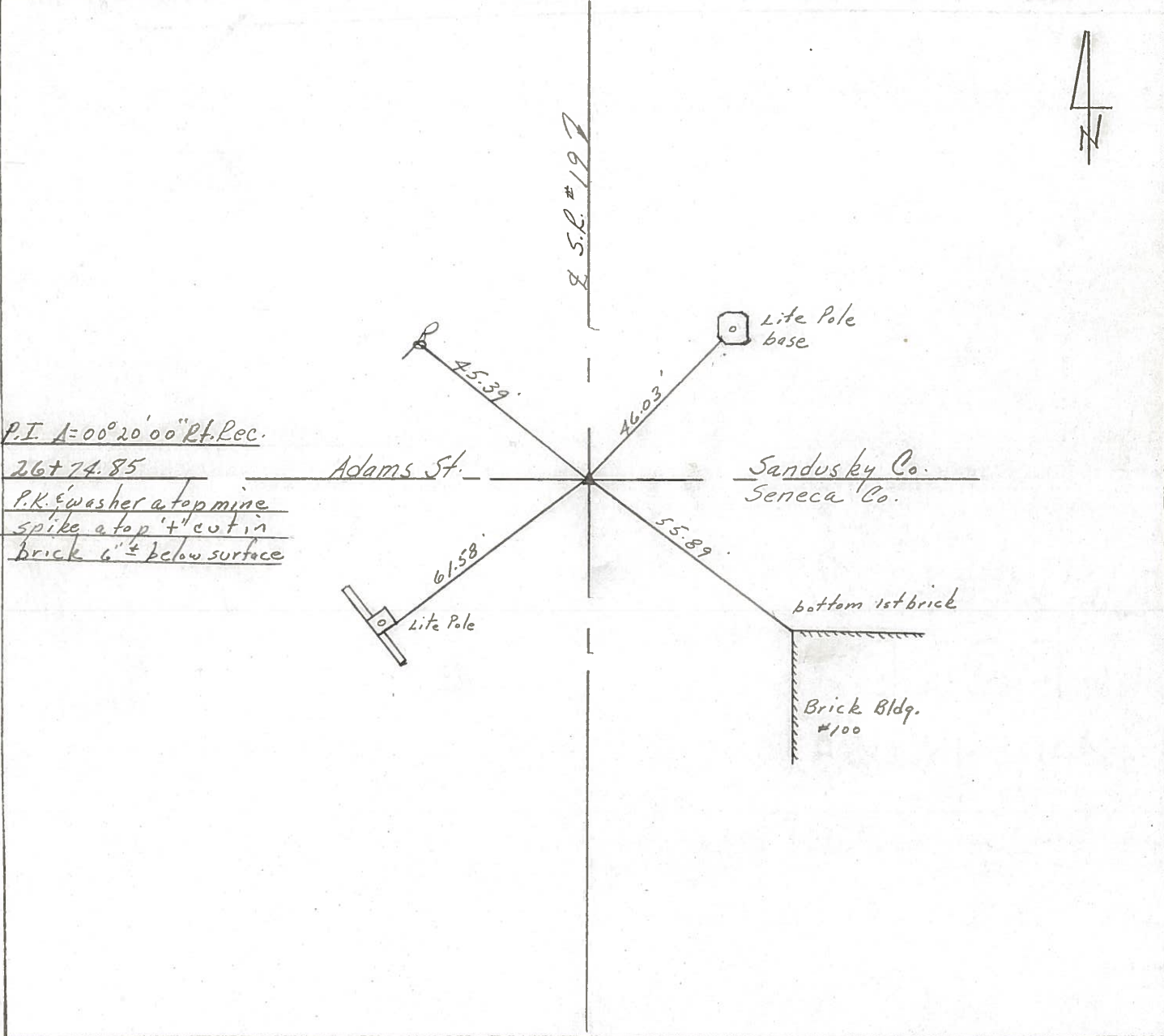
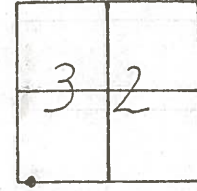
TYPE MONUMENT P.K. & washer

ON SURFACE - BELOW on surface

LEFT - & PAV'T. - RIGHT &

TO EDGE PAVEMENT

S.L.M. 0.00



Q.D.O.T. DISTRICT 2 SURVEY OFFICE

Sht. 1 of 27  
S.R. 19

State Route #19

County Sandusky

Township Green Creek

Section 32

T4N, R16E

Personnel Cronin Schneider

Ripple Mosser

Gayman Barbour

Date 5/23/78

Weather \_\_\_\_\_

Temp. \_\_\_\_\_

1	2
3	3



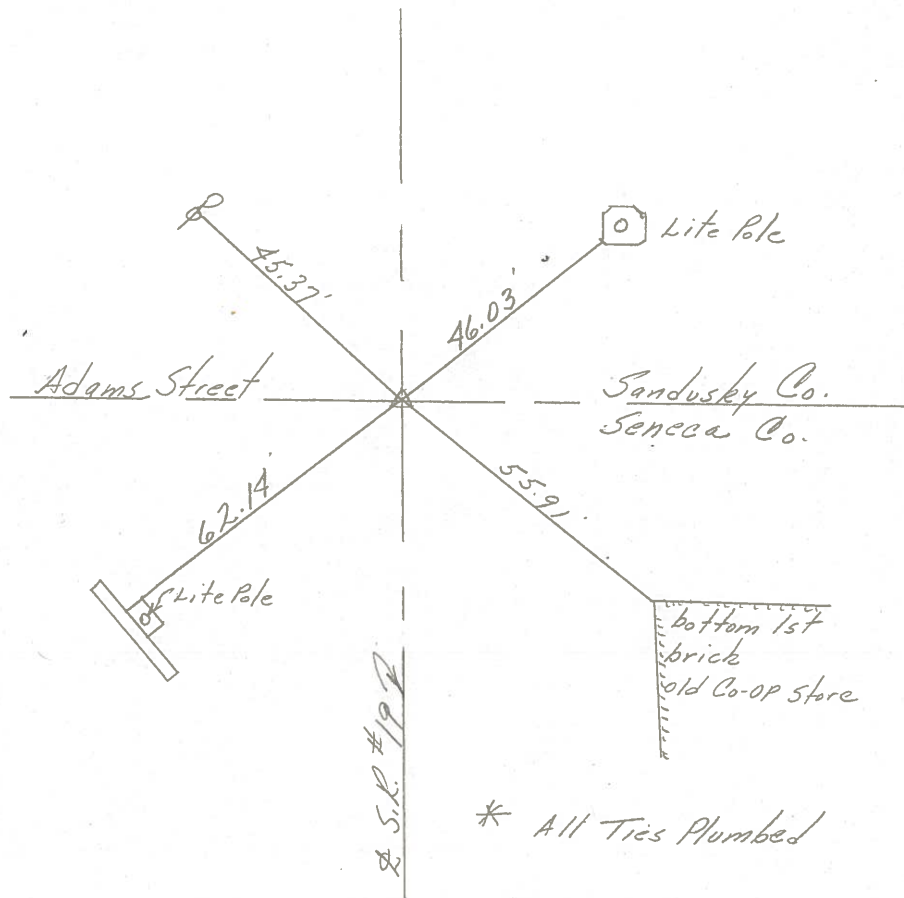
①

$\Delta = 00^{\circ}02'00''$  R.L. (Rec.)

P.I.

26+74.85

Ed. X cut in brick 4" t  
below surface. Set mine  
spike atop 5/23/78



\* All Ties Plumbed