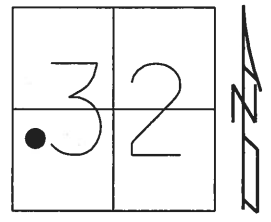


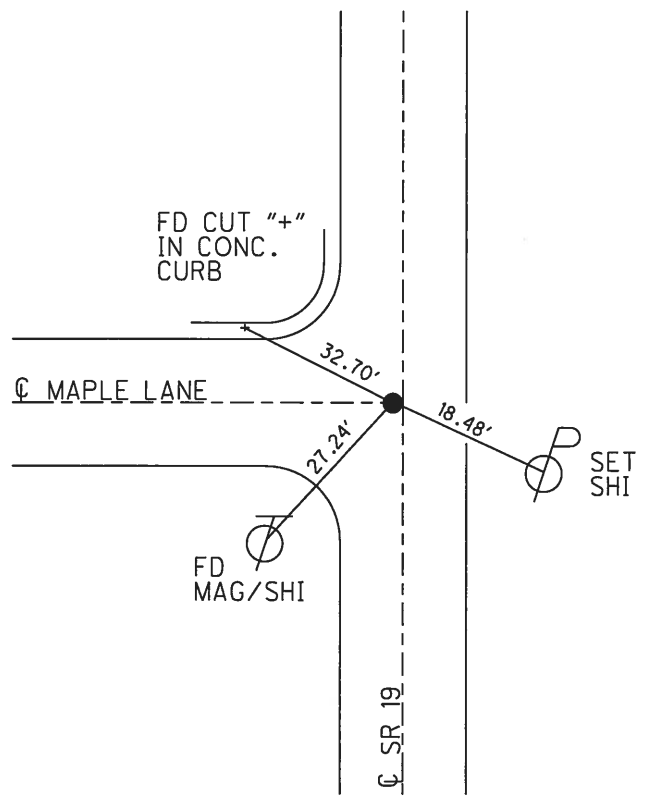
O.D.O.T. DISTRICT 2 SURVEY OFFICE (USE ONLY)

PERSONNEL _____ REFERENCE NO. 1 A SHEET 2 OF 33
 NOTES RHOADES DATE 6-4-18 ROUTE SR 19
 H.C. O'DONNELL WEATHER SUNNY COUNTY SANDUSKY
 R.C. TRENKA TEMP. 64° TOWNSHIP GREEN CREEK
 _____ SECTION 32
 _____ T 4 N R 16 E

TYPE MONUMENT MAG/WASHER
 ON SURFACE - ~~BELOW~~ ON
 LEFT - ☉ PAV'T - ~~RIGHT~~ 2.9'
 _____ TO _____ EDGE PAVEMENT
 S.L.M. 8+83
 Grid: Northing: 580665.296 Easting: 1816724.827



RECORD: P.I.
 $\Delta=00^{\circ} 29'00''$ RT REC
 35+63.80
 PK/WASHER
 ATOP MINE SPIKE
 ATOP "+" CUT IN BRICK
 ±6" BELOW
 1985
 SET MAG NAIL
 8-30-02, DCH
 FD MAG/WASHER
 REFA1
 4-14-15, JFO
 FD MAG/WASHER
 REFA1
 6-27-16, JFO
 9-2-16
 SET BY COORD
 MAG/WASHER
 6-4-18, JFO

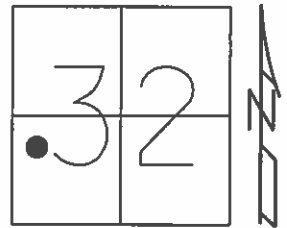


O.D.O.T. DISTRICT 2 SURVEY OFFICE (USE ONLY)

PERSONNEL _____ REFERENCE NO. 1 A SHEET 2 OF 33

NOTES RHOADES DATE 4-14-16 ROUTE SR 19
 H.C. O'DONNELL WEATHER CLOUDY COUNTY SANDUSKY
 R.C. RHOADES TEMP. 40°F TOWNSHIP GREEN CREEK
 _____ SECTION 32
 _____ T 4 N R 16 E

TYPE MONUMENT MAG/WASHER
 ON SURFACE - ~~BELOW~~ ON
 LEFT - ☉ PAV'T - ~~RIGHT~~ 2.9'
 - TO - EDGE PAVEMENT
 S.L.M. 8+83



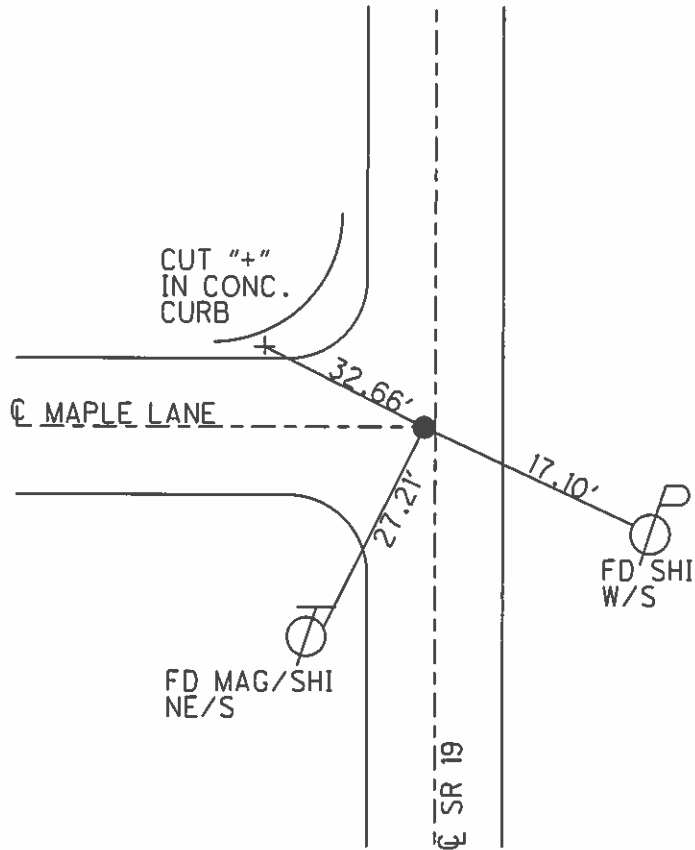
Grid: Northing: 580665.2736 Easting: 1816724.8399

RECORD:
 P.I. $\Delta=00^{\circ}29'00''$ RT REC
 35+63.80
 PK/WASHER
 ATOP MINE SPIKE
 ATOP "+" CUT IN BRICK
 ±6" BELOW
 1985

SET MAG NAIL
 08-30-02, DCH

FD MAG/WASHER
 GPS, REFA1
 4-14-15, JFO

NOT COVERED
 9-2-16



O.D.O.T. DISTRICT 2 SURVEY OFFICE

PERSONNEL

REFERENCE NO. 1-A

SHEET 2 OF 31

NOTES ROUSOS

DATE 4-10-02

ROUTE SR 19

H.C. HOMAN

WEATHER SUNNY

COUNTY Sandusky

R.C. ROUSOS

TEMP. 50°

TOWNSHIP Green Crk

SECTION 32

T 4 N R 16 E

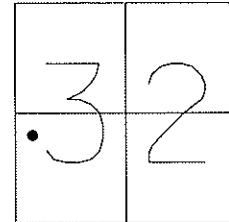
TYPE MONUMENT PK/Washer

ON SURFACE - ~~BELOW~~ On Surface

LEFT - ~~C~~ ~~PAVT~~ - ~~RIGHT~~ 2.9' LT

TO EDGE PAVEMENT

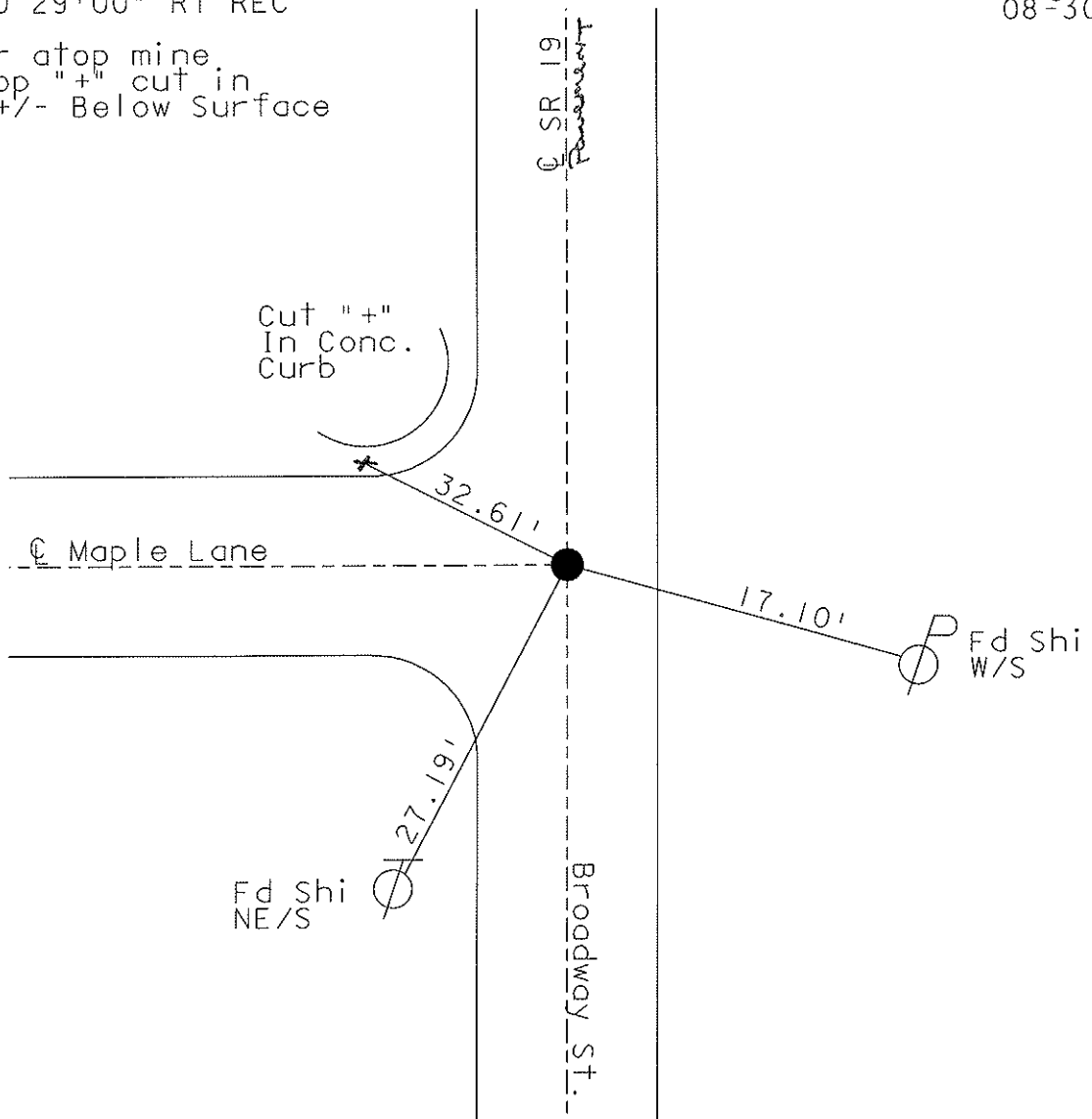
S.L.M. 8+83



Record: (1985)

P.I. $\Delta=00$ 29'00" RT REC
 35+63.80
 PK/Washer atop mine.
 Spike atop "+" cut in
 Brick 6" +/- Below Surface

Set Mag Nail
 08-30-02
 DCH



O.D.O.T. DISTRICT 2 SURVEY OFFICE

PERSONNEL

NOTES Cronin
 H.C. Ripple
 R.C. Geyman
Barbour

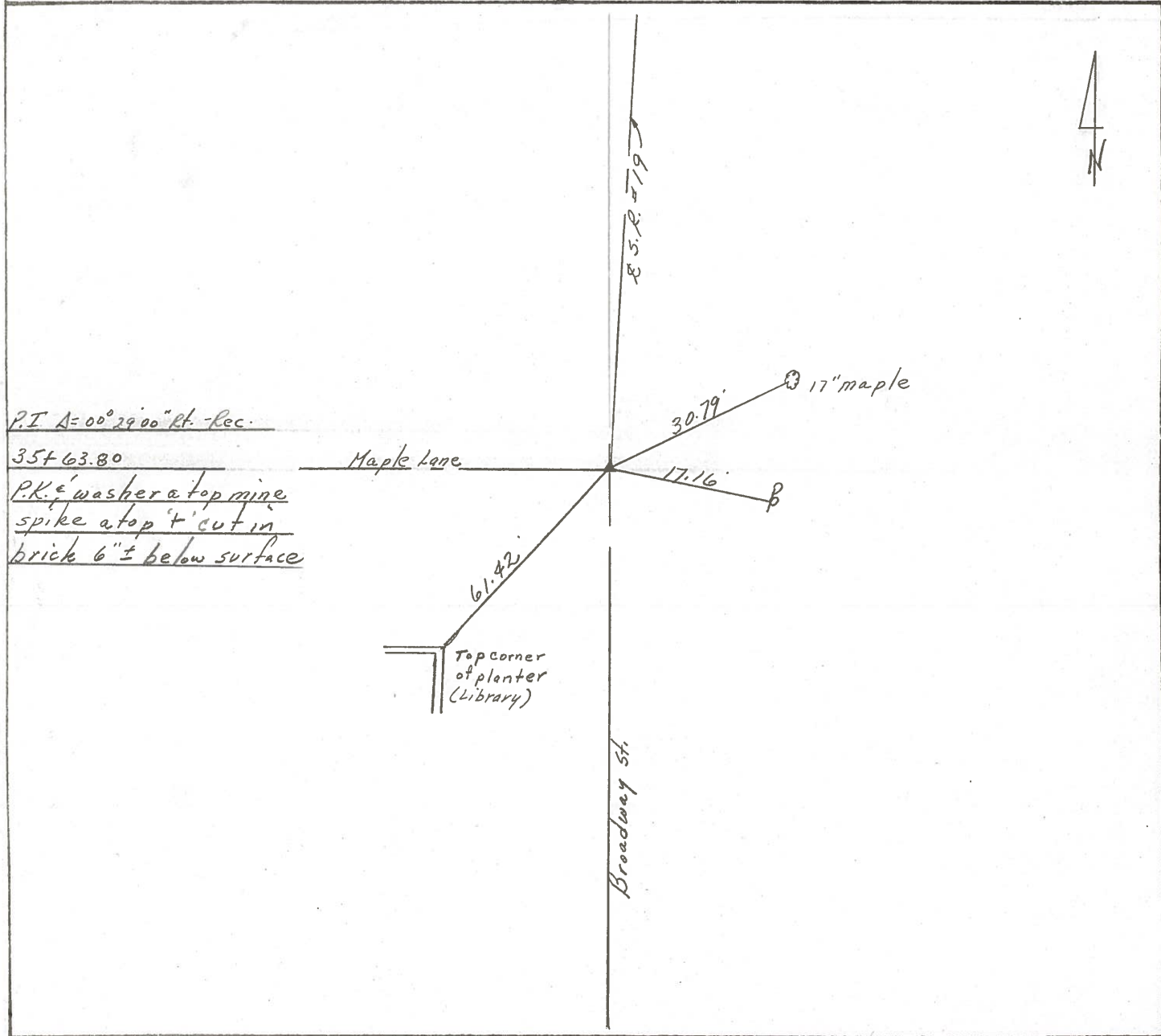
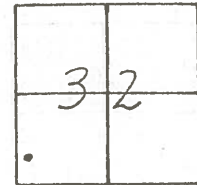
REFERENCE NO. _____
 DRAWN 12/20/85
 DATE 9/25/86
 WEATHER overcast
 TEMP. 71°

SHEET 2 OF 31

ROUTE #19
 COUNTY Sandusky
 TOWNSHIP Green Creek
 SECTION #32
 T 4 N R 16 E

TYPE MONUMENT P.K. & washer
 ON SURFACE - BELOW on surface
 LEFT- & PAV'T. - RIGHT 2.9' Lf. & Pav't.
 TO _____ EDGE PAVEMENT
 S.L.M. 0.1684 ±

IA



Q.D.O.T. DISTRICT 2 SURVEY OFFICE

Sht. 2 of 27

State Route #19

County Sandusky

Township Green Creek

Section 32

T4N, R16E

Personnel Cronin Schneider

Ripple Mosser

Geyman Barbour

Date 5/23/78

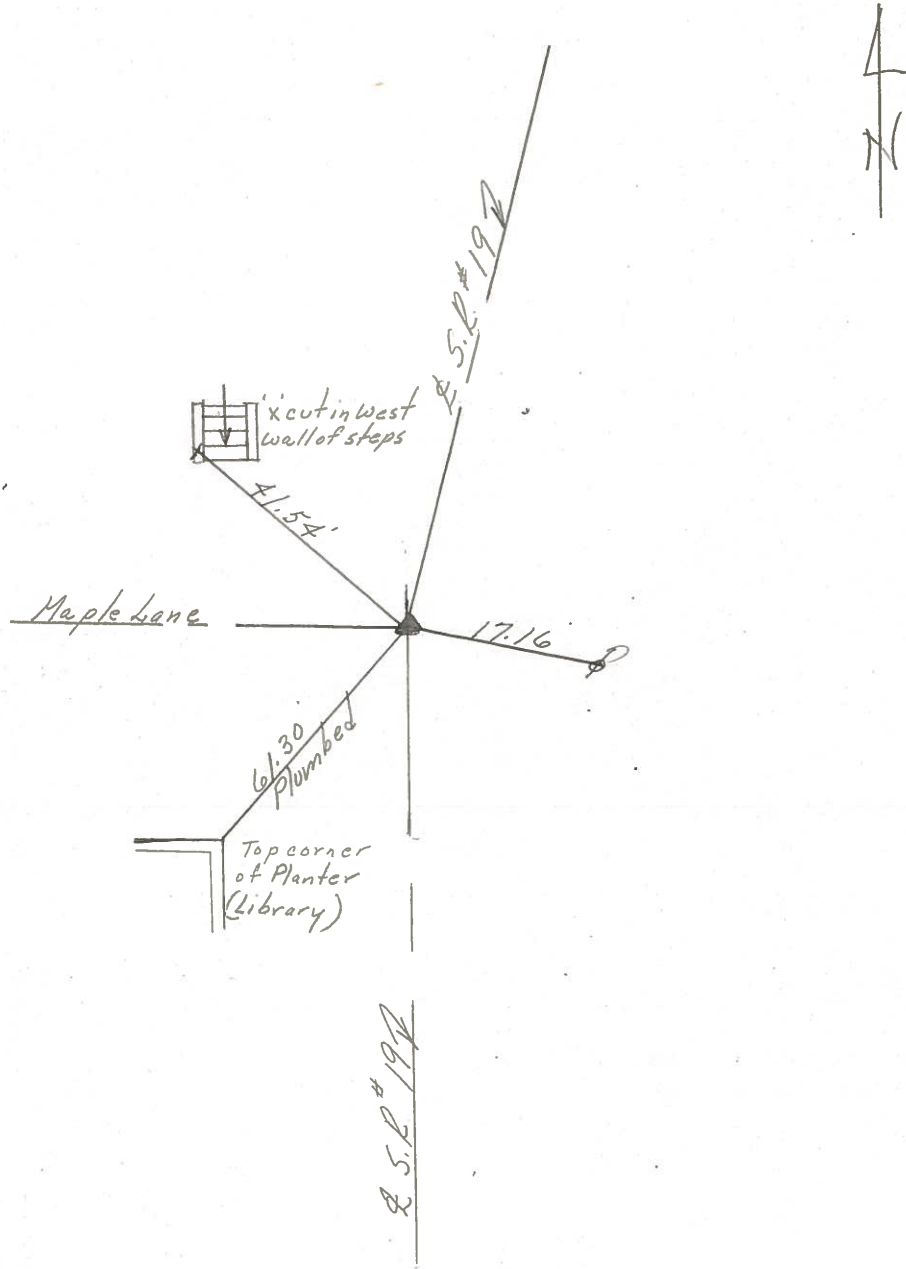
Weather

Temp.

1	2
3	3



$\Delta = 00^{\circ}29'$ Rt. (Rec.)
 P.I.
 35+63.80
 Fed. 'x' cut in brick 4" \pm
 below surface. Set min. 9"
 spike at top, 6" to the surface.



S.P. #19