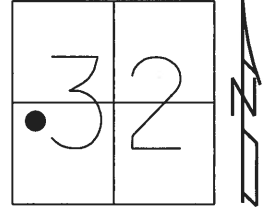


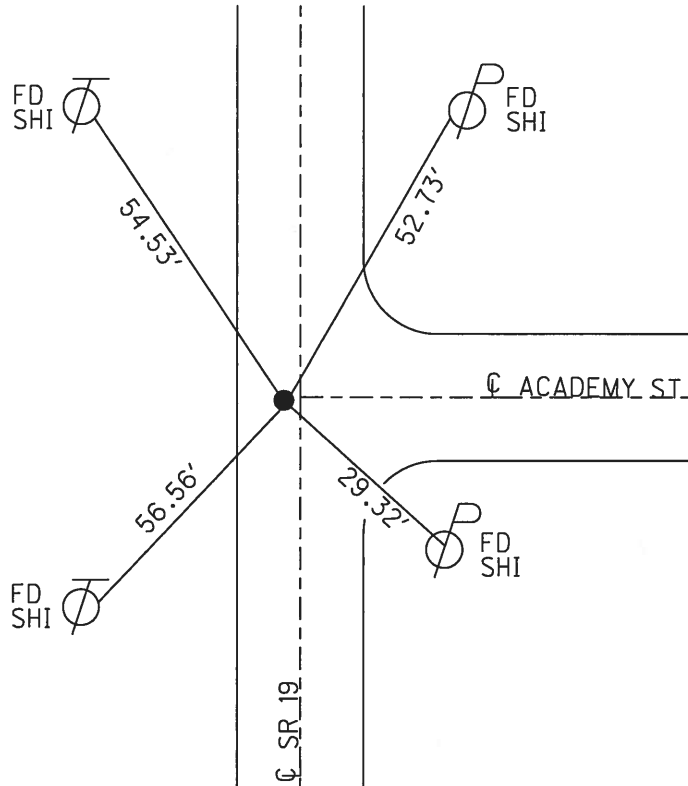
O.D.O.T. DISTRICT 2 SURVEY OFFICE (USE ONLY)

PERSONNEL _____ REFERENCE NO. 1 B SHEET 3 OF 33
 NOTES RHOADES DATE 6-4-18 ROUTE SR 19
 H.C. O'DONNELL WEATHER SUNNY COUNTY SANDUSKY
 R.C. TRENKA TEMP. 64° TOWNSHIP GREEN CREEK
 _____ SECTION 32
 _____ T 4 N R 16 E

TYPE MONUMENT MAG/WASHER
 ON SURFACE - ~~BELOW~~ ON
 LEFT - ☉ PAV'T - ~~RIGHT~~ 2.6'
 - TO - EDGE PAVEMENT
 S.L.M. 16+53
 Grid: Northing: 581433.995 Easting: 1816743.164



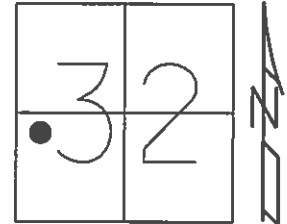
RECORD: P.I.
 $\Delta=00^{\circ}42'00''$ RT
 43+33.53
 PK/WASHER
 ATOP MINE SPIKE
 ATOP "X" CUT IN BRICK
 6" BELOW
 1985
 SET MAG NAIL
 8-30-02
 FD MAG/WASHER
 GPS, REFB1
 4-14-16, JFO
 FD MAG/WASHER
 REFB1
 6-27-16, JFO
 NOT COVERED
 9-2-16
 SET MAG/WASHER
 NEWREFB1
 6-4-18, JFO



O.D.O.T. DISTRICT 2 SURVEY OFFICE (USE ONLY)

PERSONNEL _____ REFERENCE NO. 1 B SHEET 3 OF 33
 NOTES RHOADES DATE 4-14-16 ROUTE SR 19
 H.C. O'DONNELL WEATHER CLOUDY COUNTY SANDUSKY
 R.C. RHOADES TEMP. 40°F TOWNSHIP GREEN CREEK
 _____ SECTION 32
 _____ T 4 N R 16 E

TYPE MONUMENT MAG/WASHER
~~ON SURFACE~~ - BELOW .5"
 LEFT - ☉ PAV'T - ~~RIGHT~~ 2.6'
_____ TO _____ EDGE PAVEMENT
 S.L.M. 16+53



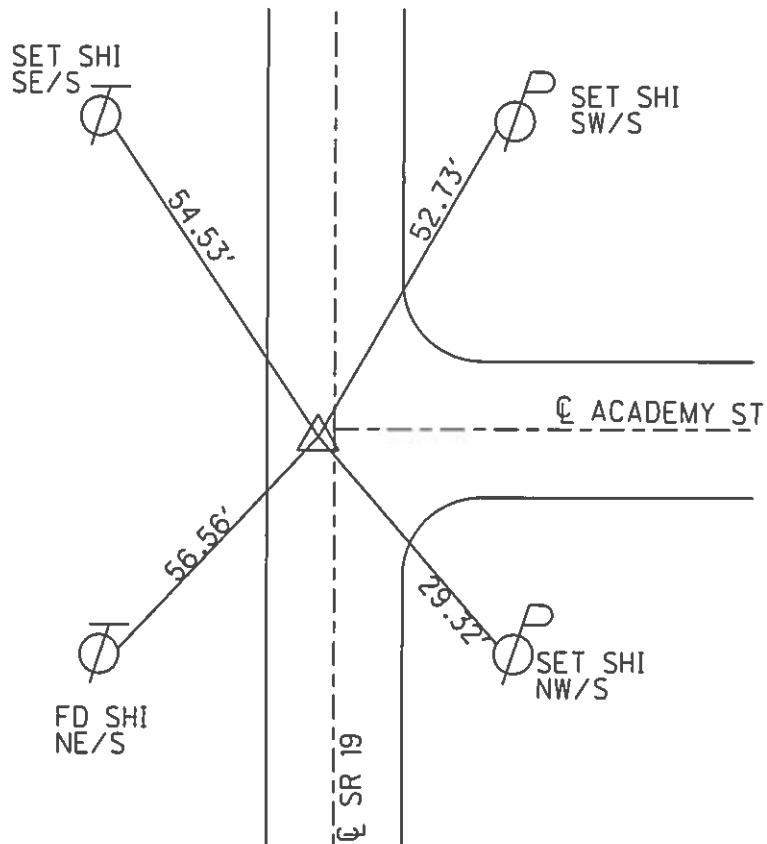
Grid: Northing: 581434.0017 Easting: 1816743.0742

RECORD:
 P.I. $\Delta=00^{\circ}42'00''$ RT
 43+33.53
 PK/WASHER
 ATOP MINE SPIKE
 ATOP "X" CUT IN BRICK
 6" BELOW
 1985

SET MAG NAIL
 08-30-02

FD MAG/WASHER
 GPS, REFB!
 4-14-16, JFO

NOT COVERED
 9-2-16



O.D.O.T. DISTRICT 2 SURVEY OFFICE

PERSONNEL

REFERENCE NO. 1-B

SHEET 3 OF 31

NOTES ROUSOS

DATE 4-10-02

ROUTE SR 19

H.C. HOMAN

WEATHER SUNNY

COUNTY Sandusky

R.C. ROUSOS

TEMP. 50°

TOWNSHIP Green Crk

SECTION 32

T4 N R16 E

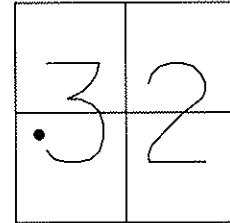
TYPE MONUMENT PK/Washer

~~ON SURFACE~~ - BELOW 1/2" Below

~~LEFT - C PAV'T - RIGHT~~ 2.6' LT

TO EDGE PAVEMENT

S.L.M. 16+53



Record: P.I.
 $\Delta = 00\ 42'00''$ RT
 43+33.53
 PK & Washer Over
 Mine Spike Over
 "X" Cut in Bricks
 6" Below Surface (1985)

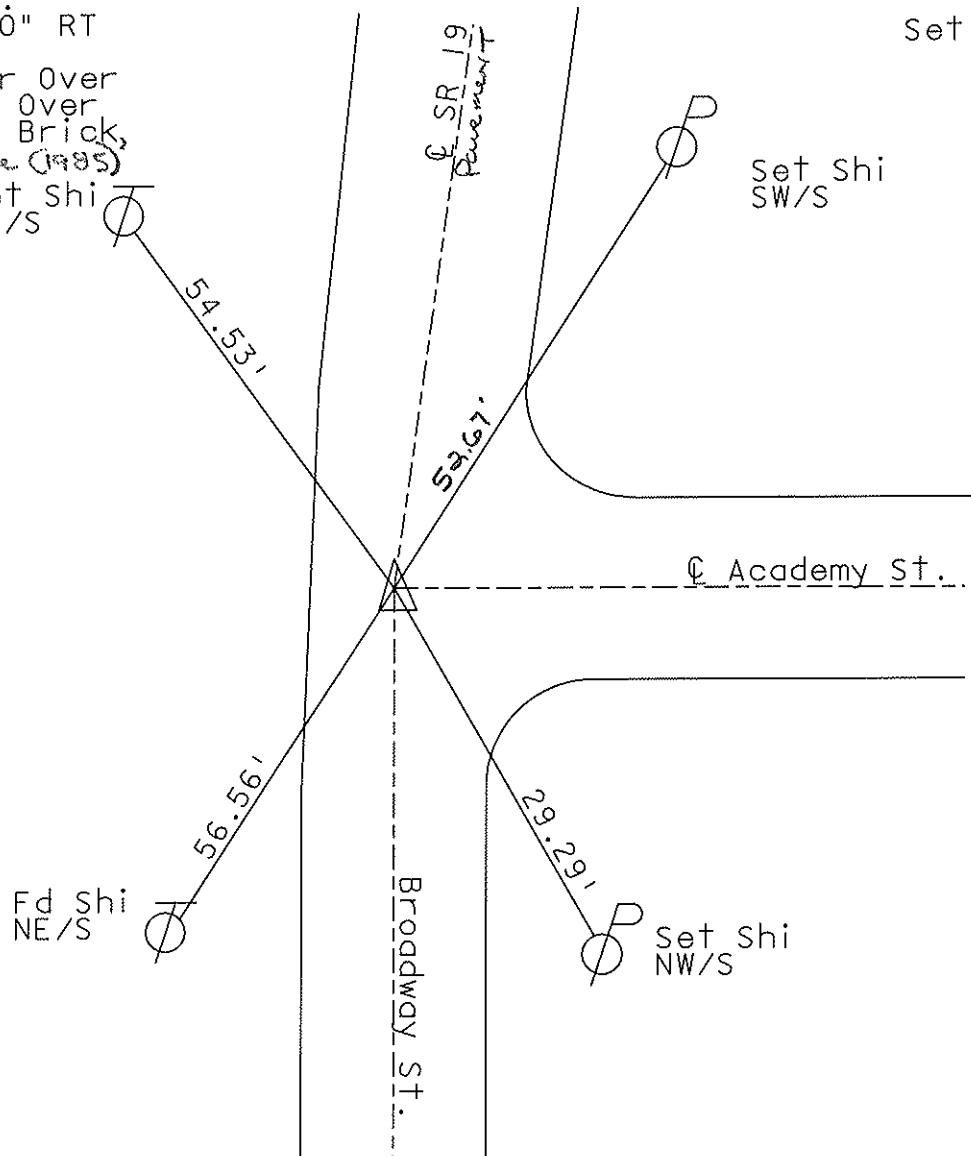
Set Mag Nail
 08-30-02
 DCH

Set Shi
 SE/S

Set Shi
 SW/S

Fd Shi
 NE/S

Set Shi
 NW/S



O.D.O.T. DISTRICT 2 SURVEY OFFICE

PERSONNEL

REFERENCE NO. _____

SHEET 3 OF 31

NOTES Aronin

DRAWN 12/20/85

H.C. Ripple

DATE 9/25/86

R.C. Geyman

WEATHER sunny

Barbour

TEMP. 74°

ROUTE #19

COUNTY Sandusky

TOWNSHIP Green Creek

SECTION 32

T 4 N R 16 E

TYPE MONUMENT P.K. & washer

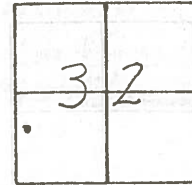
ON SURFACE - BELOW on surface

LEFT- & PAV'T. - RIGHT 2.6' Lt. & P.V.T.

TO EDGE PAVEMENT

S.L.M. 0.3141 ±

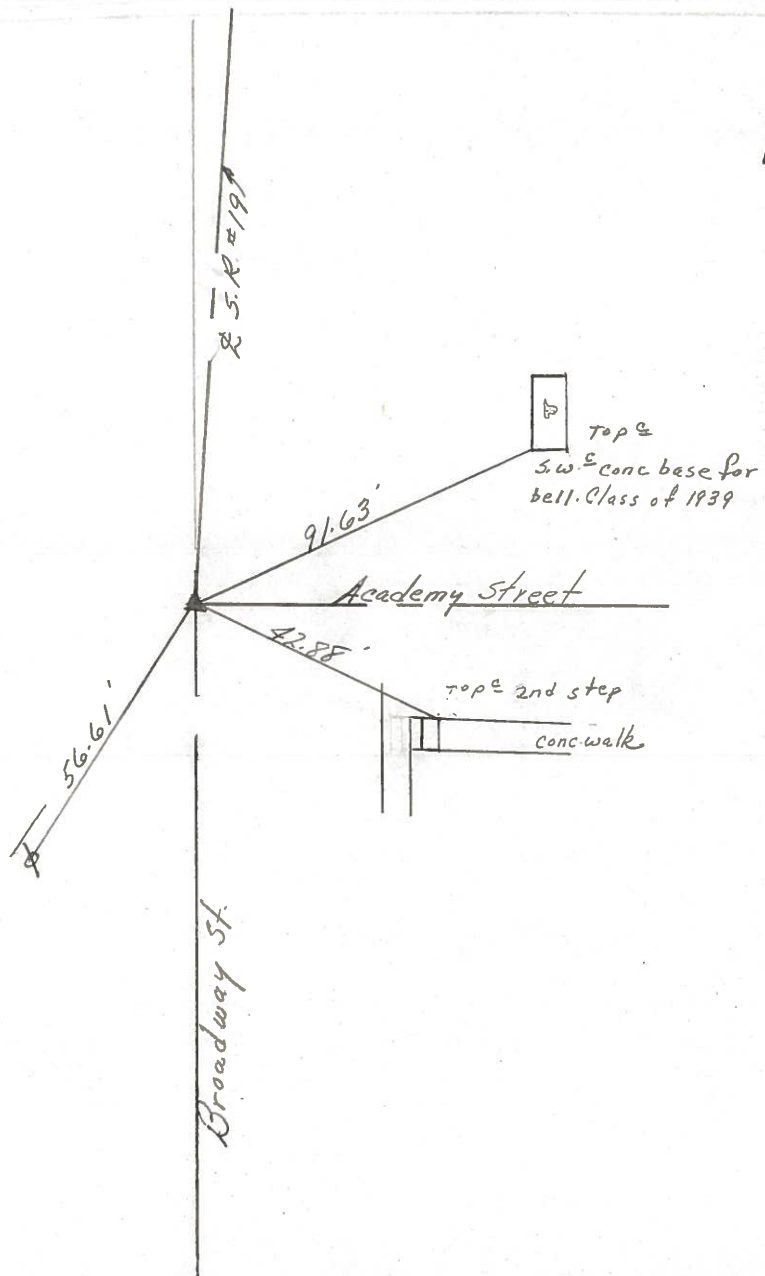
1B



P.T. A = 00°42'00" Rt. Rec.

43+33.53

P.K. & washer atop mine
spike atop & cut in
brick 6" ± below surface



Q.D.O.T. DISTRICT 2 SURVEY OFFICE

Sht. 3 of 27

State Route #19

County Sandusky

Township Green Creek

Section 32

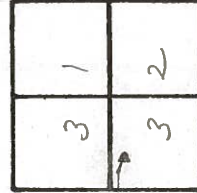
T4N, R16E

Personnel Cronin Schneider
Ripple Mosser
Geunin Berbour

Date 5/23/78

Weather

Temp.



$\Delta = 00^{\circ}42'00''$ - R/L

P.I.

43+33.53

Ed. x' cut in brick 4" below surface. Set mine spike at top 4' to the surface

15" Ash 40.63'

52.70'

S.R. #19

91.57'

Academy Street

42.96'

S.W. conc. base for bell. Class of 1939

S.R. #19

* All ties Plumbed

