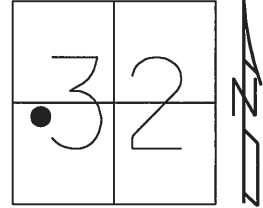


O.D.O.T. DISTRICT 2 SURVEY OFFICE (USE ONLY)

PERSONNEL \_\_\_\_\_ REFERENCE NO. 2 SHEET 5 OF 33  
 NOTES RHOADES DATE 6-4-18 ROUTE SR 19  
 H.C. O'DONNELL WEATHER SUNNY COUNTY SANDUSKY  
 R.C. TRENKA TEMP. 64° TOWNSHIP GREEN CREEK  
 SECTION 32  
 T 4 N R 16 E

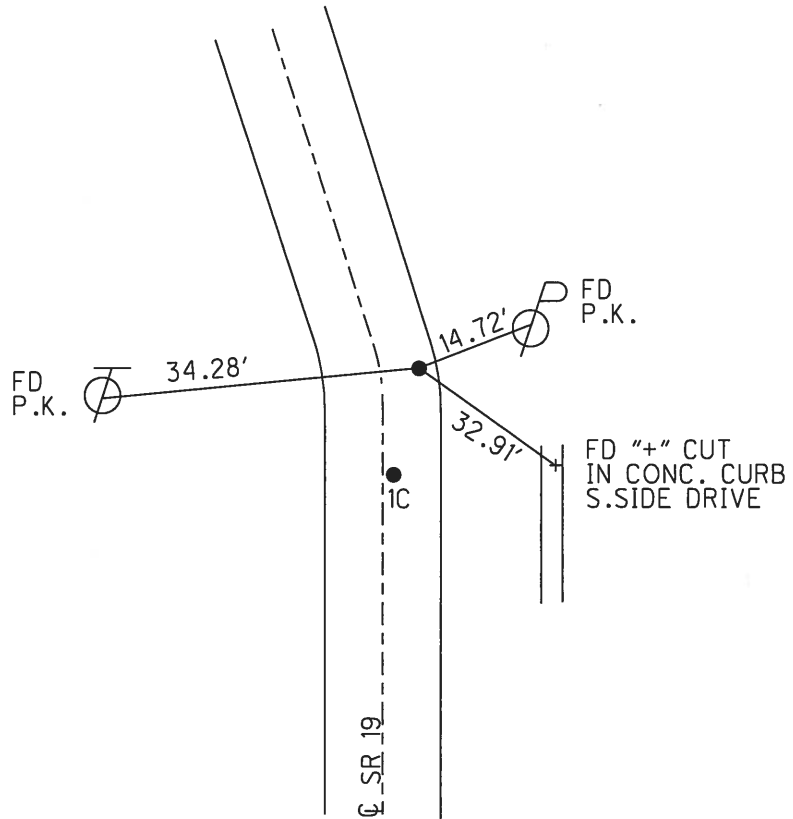
TYPE MONUMENT MAG/WASHER  
 ON SURFACE - ~~BELOW~~ ON  
~~LEFT~~ Q PAV'T - RIGHT 7.9"  
- TO - EDGE PAVEMENT  
 S.L.M. 28+69



Grid: Northing: 582639.084 Easting: 1816786.907

RECORD: P.I.  
 Δ 0+24.87  
 FD P.K./WASHER  
 ATOP R.R.SPK  
 6" BELOW  
 1985  
 SET MAG NAIL  
 8-30-02, DCH  
 FD MAG SHANK  
 REF2  
 4-14-16, JFO  
 FD MAG SHANK  
 SET MAG/WASHER  
 REF2  
 6-27-16, JFO  
 FD MAG/WASHER  
 9-2-16  
 SET MAG/WASHER  
 6-4-18, JFO

DIST. IC-2= 24.84'

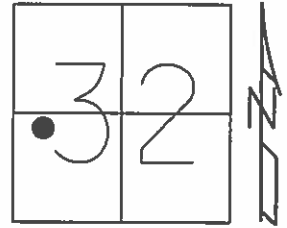


O.D.O.T. DISTRICT 2 SURVEY OFFICE (USE ONLY)

PERSONNEL \_\_\_\_\_ REFERENCE NO. 2 SHEET 5 OF 33

NOTES RHOADES DATE 4-14-16 ROUTE SR 19  
 H.C. O'DONNELL WEATHER CLOUDY COUNTY SANDUSKY  
 R.C. RHOADES TEMP. 40°F TOWNSHIP GREEN CREEK  
 \_\_\_\_\_ SECTION 32  
 \_\_\_\_\_ T 4 N R 16 E

TYPE MONUMENT MAG/WASHER  
 ON SURFACE - ~~BELOW~~ ON  
~~LEFT~~ ☉ PAV'T - RIGHT 7.9"  
- TO - EDGE PAVEMENT  
 S.L.M. 28+69



Grid: Northing: 582639.0812 Easting: 1816786.8757

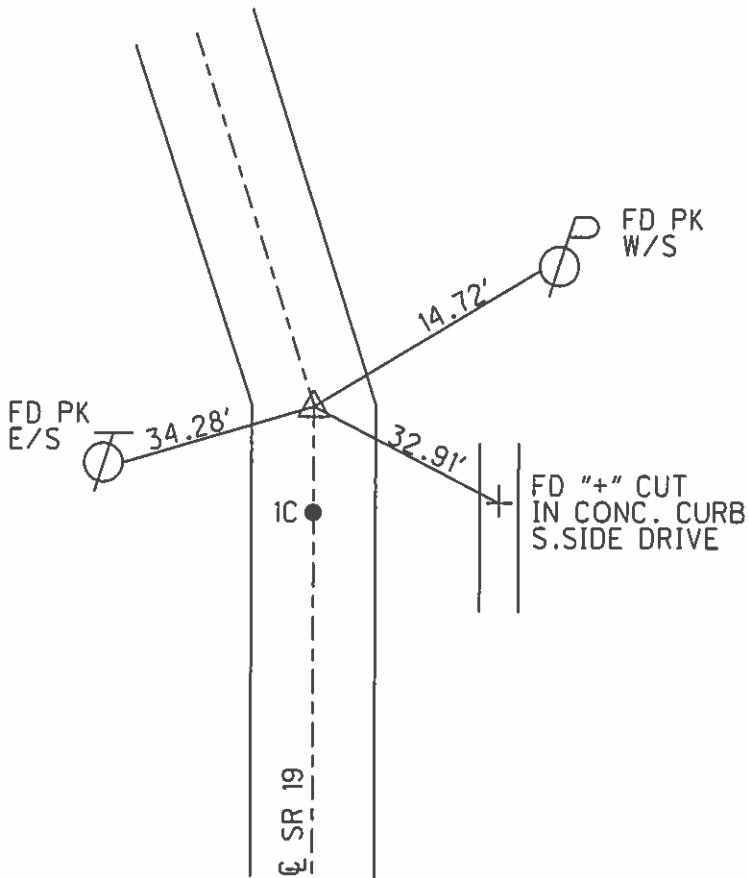
RECORD:  
 PI=Δ  
 0+24.87  
 PK/WASHER  
 ATOP RR. SPK.  
 6" BELOW  
 1985

NOTE: DIS. REF 1C TO REF 2 = 24.84'

SET MAG NAILS  
 08-30-02, DCH

FD MAG SHANK  
 GPS, REF2  
 4-14-16, JFO

NOT COVERD  
 9-2-16



O.D.O.T. DISTRICT 2 SURVEY OFFICE

PERSONNEL

REFERENCE NO. 2

SHEET 4 OF 31

NOTES ROUSOS

DATE 4-10-02

ROUTE SR 19

H.C. HOMAN

WEATHER SUNNY

COUNTY Sandusky

R.C. ROUSOS

TEMP. 50°

TOWNSHIP Green Crk

SECTION 32

T4 N R16 E

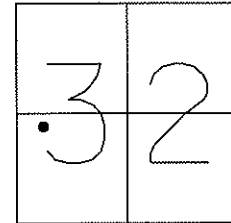
TYPE MONUMENT PK/Washer

ON SURFACE - ~~BELOW~~ On Surface

~~LEFT - C PAVT - RIGHT~~ 7.9' RT

TO EDGE PAVEMENT

S.L.M. 28+69



Record:

PI=Δ

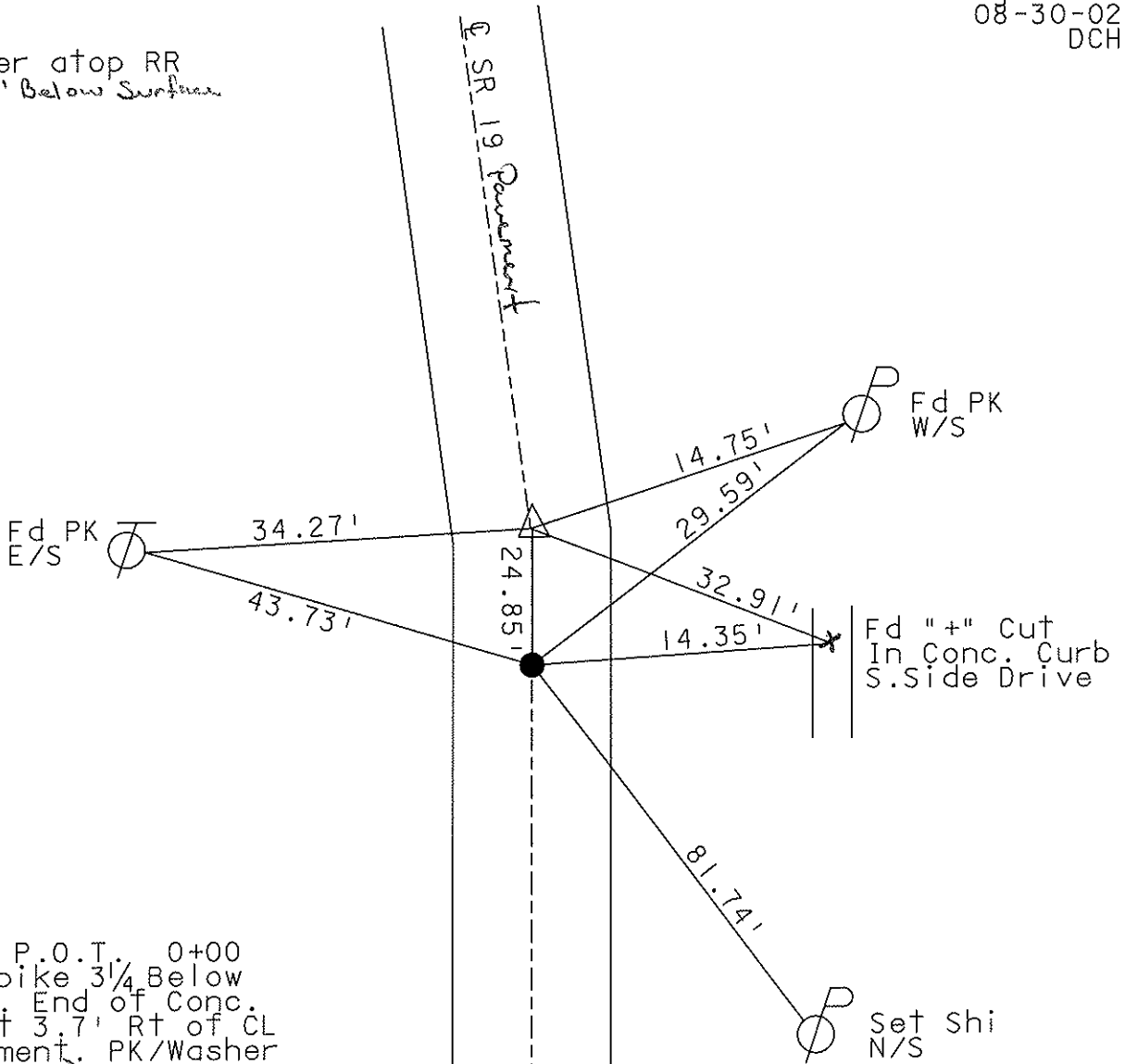
0+24.87

PK/Washer atop RR

Spike, 6" Below Surface

(1985)

Set Mag Nails  
08-30-02  
DCH



Record: P.O.T. 0+00  
Fd RR Spike 3 1/4 Below  
Surface. End of Conc.  
Pavement 3.7' Rt of CL  
Of Pavement. PK/Washer  
Atop (1985)

# O.D.O.T. DISTRICT 2 SURVEY OFFICE

PERSONNEL

NOTES Cronin  
 H.C. Ripple  
 R.C. Geyman  
Barbour

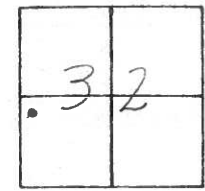
REFERENCE NO. 2

DRAWN 12/20/85  
 DATE 9/25/86  
 WEATHER sunny  
 TEMP. 78°

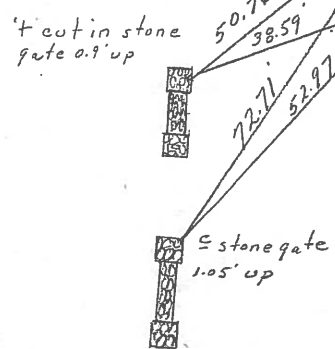
SHEET 4 OF 31

ROUTE #19  
 COUNTY Sandusky  
 TOWNSHIP Green Creek  
 SECTION #32  
 T 4 N R 16 E

TYPE MONUMENT P.K. & washer  
 ON SURFACE - BELOW on surface  
 LEFT - PAV'T. - RIGHT RT & Pav't  
 TO EDGE PAVEMENT  
 S.L.M. \_\_\_\_\_



P.I. A = \_\_\_\_\_  
0+24.87  
P.K. & washer at top R.L.  
spike 6" below surface



P.O.T. 0+00  
Ed R.L. spike 3 1/4" below  
surface. End of conc-  
rete pavement. 3.7' Et.  
of & of Pavement  
P.K. & washer at top



County Sandusky

Date 5/24/78

Township Green Creek

Weather \_\_\_\_\_

Section 32

Temp. \_\_\_\_\_

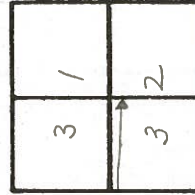
T4N, R16E

Personnel Cronin Schneider

Lippke Mosser

Ceyman Barbour

②



②



P.I.

0+24.87

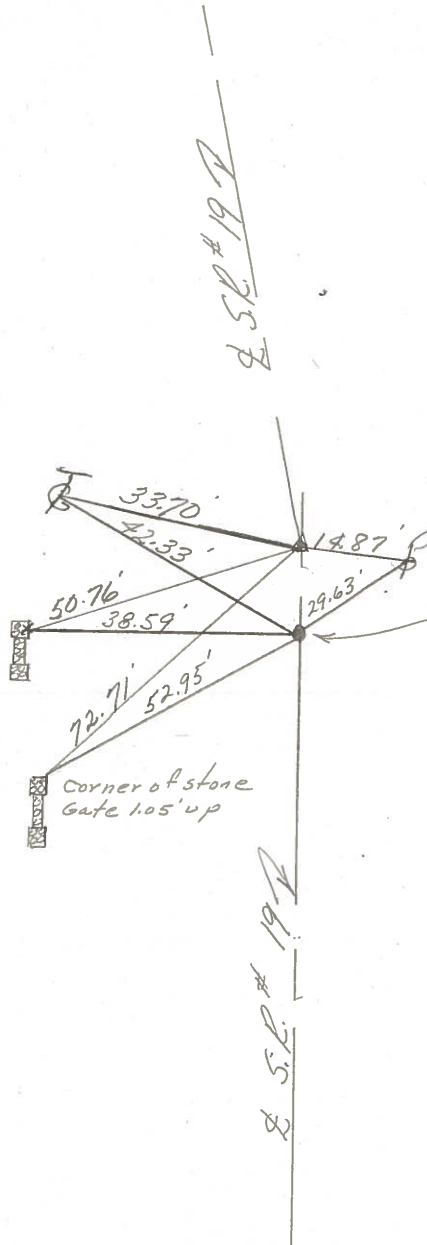
Fd. R.R. spike 3 1/2" below

surface. Did not set anything

a top.

7.5' Rt. of  $\frac{1}{2}$  of Pavement

1/2 cut in  
stone Gate  
0.9' up



P.O.T.

0+00  
Fd. R.R. spike 3 1/2" below  
surface. Did not set  
anything a top. End of  
Concrete Pavement, 3.7'  
Rt. of  $\frac{1}{2}$  Pavement

\* All Measurements Plumbed