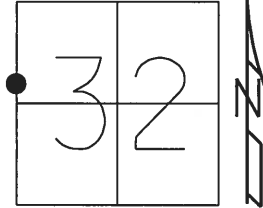


O.D.O.T. DISTRICT 2 SURVEY OFFICE (USE ONLY)

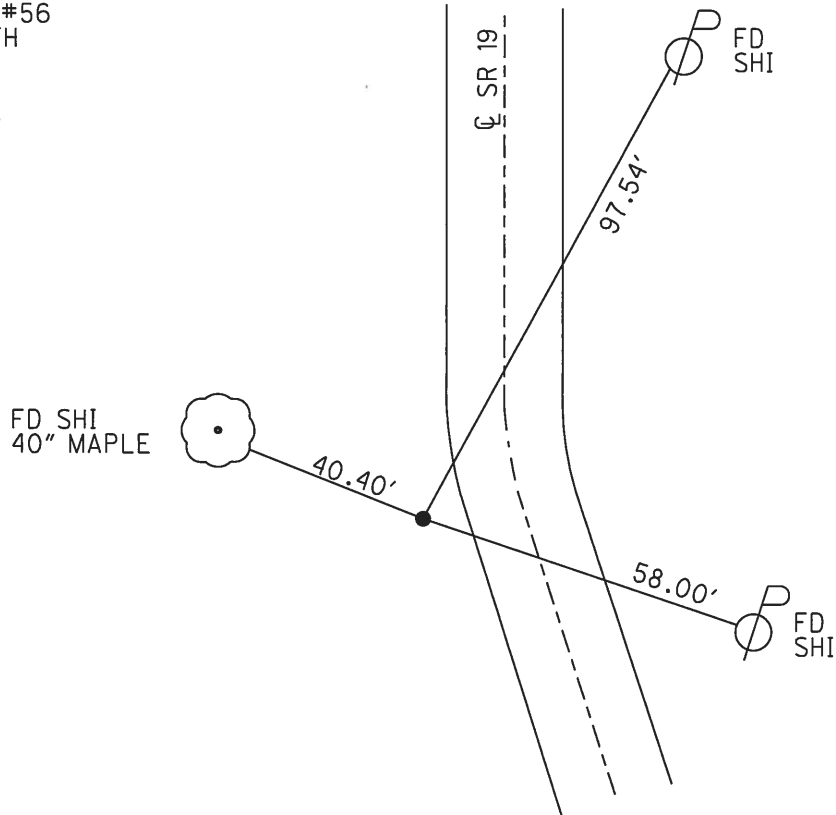
PERSONNEL \_\_\_\_\_ REFERENCE NO. 2 A SHEET 6 OF 33  
 NOTES RHOADES DATE 4-14-16 ROUTE SR 19  
 H.C. O'DONNELL WEATHER CLOUDY COUNTY SANDUSKY  
 R.C. RHOADES TEMP. 40°F TOWNSHIP GREEN CREEK  
 \_\_\_\_\_ SECTION 32  
 \_\_\_\_\_ T 4 N R 16 E

TYPE MONUMENT HARROW TOOTH  
~~ON SURFACE~~ - BELOW 3"  
 LEFT - ☉ PAV'T - ~~RIGHT~~ 2'  
2' TO LT EDGE PAVEMENT  
 S.L.M. 33+95



Grid: Northing: 583154.985 Easting: 1816645.666

RECORD: P.I.  
 8+08.60  
 REF FIELD BOOK #56  
 FD HARROW TOOTH  
 7" DOWN  
 8/20/02, DCH  
 FD LG. R.R.SPIKE  
 3" DOWN  
 REFA2  
 6-27-16, JFO  
 9-2-16



O.D.O.T. DISTRICT 2 SURVEY OFFICE (USE ONLY)

PERSONNEL

REFERENCE NO. 2 A

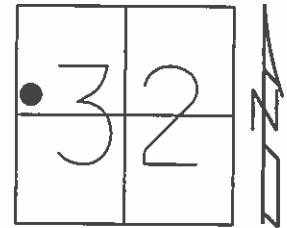
SHEET 6 OF 33

NOTES RHOADES  
 H.C. O'DONNELL  
 R.C. RHOADES

DATE 4-14-16  
 WEATHER CLOUDY  
 TEMP. 40°F

ROUTE SR 19  
 COUNTY SANDUSKY  
 TOWNSHIP GREEN CREEK  
 SECTION 32  
 T 4 N R 16 E

TYPE MONUMENT HARROW (I.PIN)  
~~ON SURFACE~~ - BELOW ±7"  
 LEFT - ☉ PAV'T - ~~RIGHT~~ 2'  
 - TO - EDGE PAVEMENT  
 S.L.M. 33+95



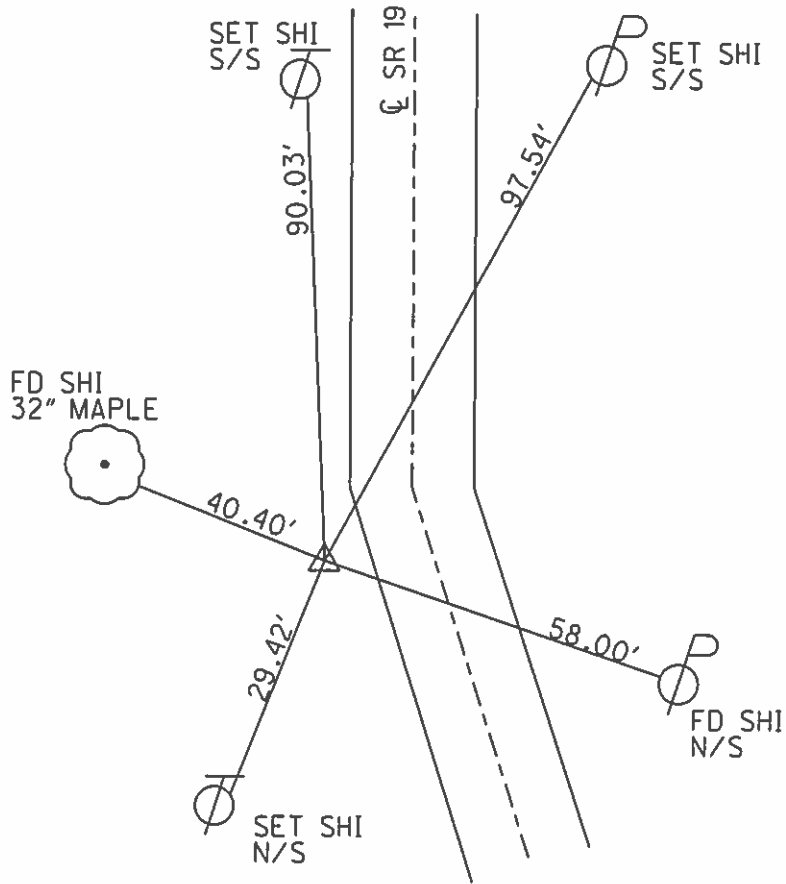
Grid: Northing: 583154.9751 Easting: 1816645.6728

RECORD:

Δ=?  
 8+08.60  
 REF FIELD BOOK #56

FD HARROW TOOTH IPIN  
 GPS, REFA2  
 4-14-16, JFO

NOT COVERED  
 9-2-16



O.D.O.T. DISTRICT 2 SURVEY OFFICE

PERSONNEL

REFERENCE NO. 2-A

SHEET 5 OF 31

NOTES ROUSOS

DATE 8-20-02

ROUTE SR 19

H.C. HOMAN

WEATHER SUNNY

COUNTY Sandusky

R.C. ROUSOS

TEMP. 75°

TOWNSHIP Green Crk

SECTION 32

T4 N R16 E

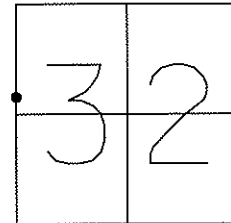
TYPE MONUMENT Harrow Tooth (I. Pin)

~~ON SURFACE~~ - ~~BELOW~~ 7" +/-

~~LEFT - Q PART - RIGHT~~ 2' LT of EP

TO EDGE PAVEMENT

S.L.M. 33+95 +/-



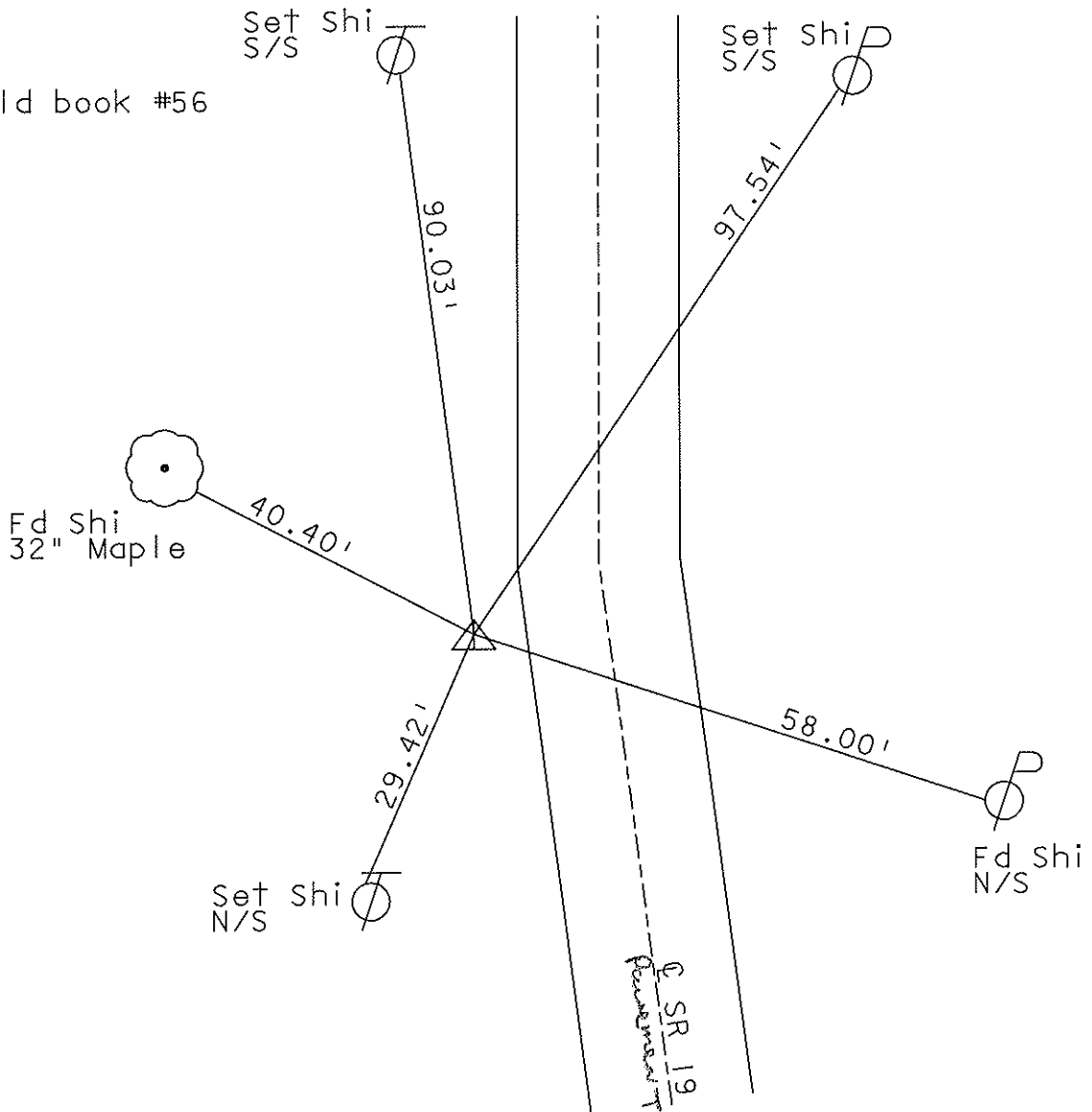
Record:

$\Delta = ?$

PI

8+08.60

ref field book #56



O.D.O.T. DISTRICT 2 SURVEY OFFICE

PERSONNEL

REFERENCE NO. 5

SHEET 5 OF 31

NOTES Cronin

H.C. Ripple

R.C. Geyman

Barbour

DATE 9/25/86

WEATHER sunny

TEMP. 78°

ROUTE #19

COUNTY Sandusky

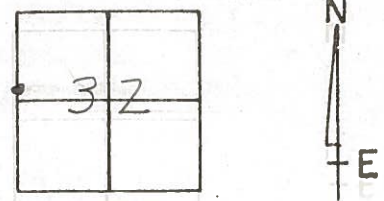
TOWNSHIP GREEN CREEK

SECTION 32

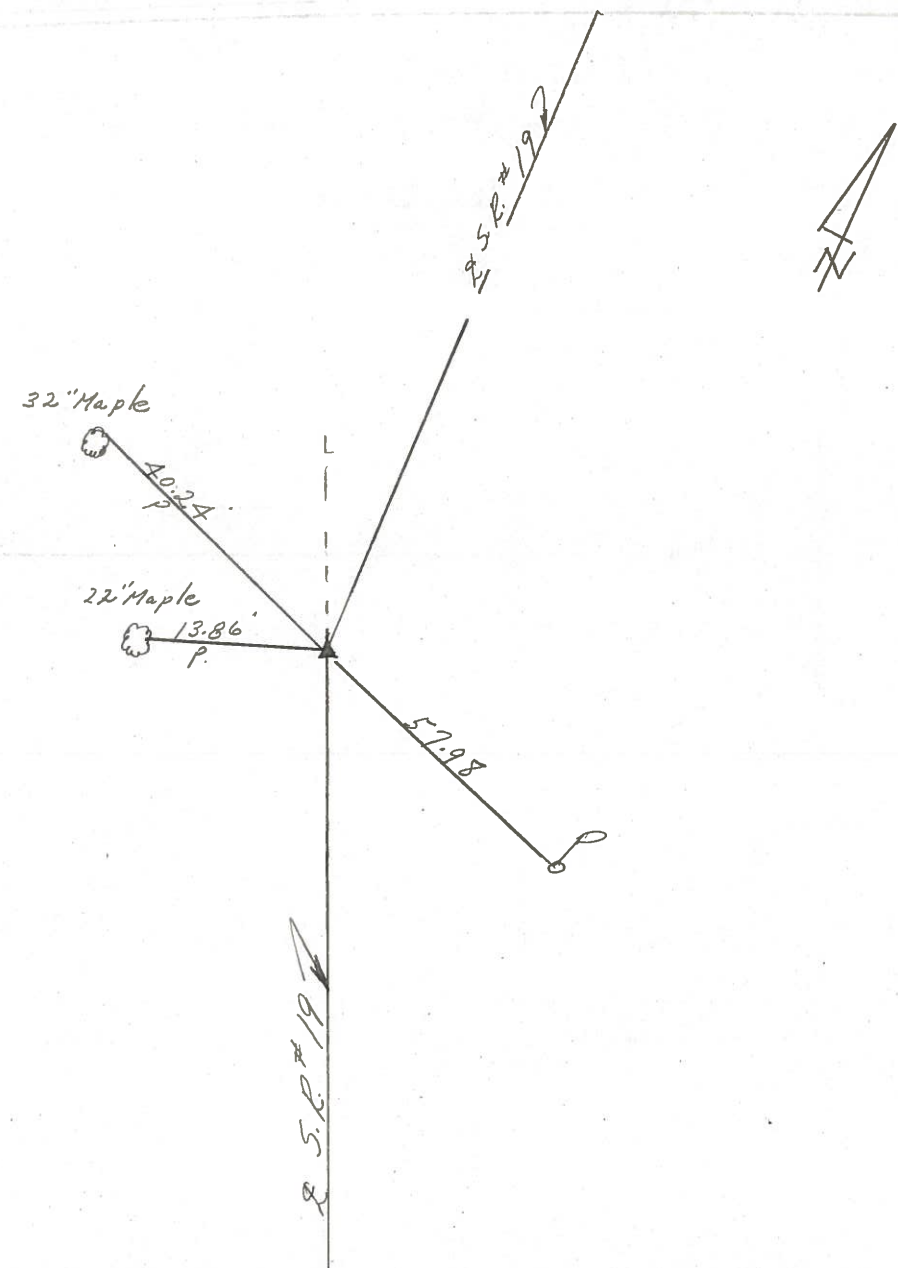
T 4 N R 16 E

TYPE MONUMENT Harrow tooth (I.P.in)  
 ON SURFACE - BELOW 7" below surface  
 LEFT- & PAV'T. - RIGHT 2' Lt. Lt. E.P.  
 TO EDGE PAVEMENT  
 S.L.M. EDGE PAVEMENT

**2A**



A = ?  
P.I.  
8+08.60  
Ref.: Field Bk. # 56



County Sandusky

Date 5/24/78

Township Green Creek

Weather \_\_\_\_\_

Section 32

Temp. \_\_\_\_\_

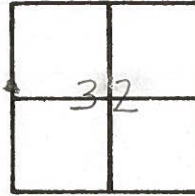
T4N, R16E

Personnel Cronin Schneider

Rippte Mosser

Geyman Barbour

**2A**



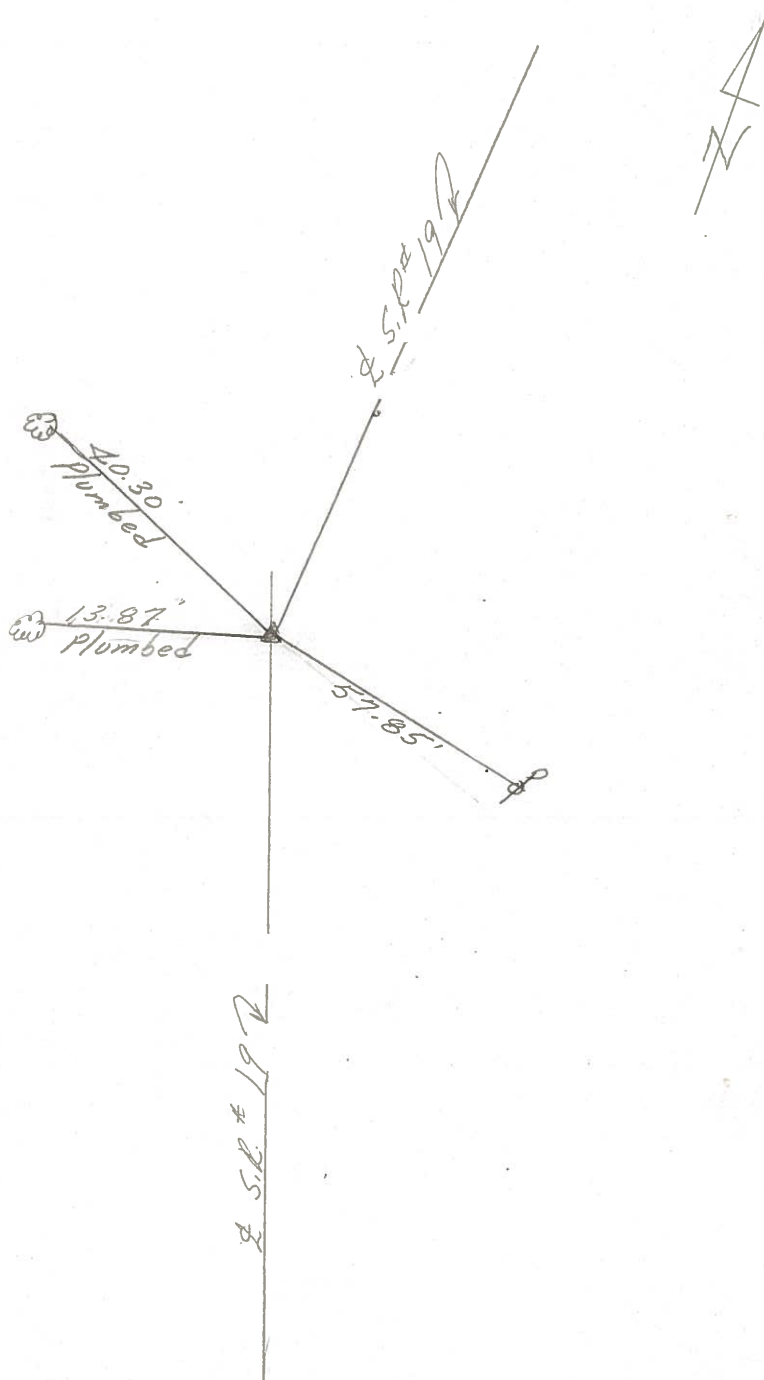
$\Delta = ?$

P.I. Field Bk #56

8+08.60

Fd. Harrow Tooth 5" below surface. 2.0' Lt. of Lt.

E.P.





PERSONNEL TITLE PERSONNEL TITLE

Schneider

COUNTY Sandusky

DATE Jan. 1968

Mosser

S. R. # 19

WEATHER

Barbour

SEC. Seneca Co. Line North TEMP.

DESCRIPTION

Ties for Control Points

JOB NO.

LEFT

CENTER LINE

RIGHT

