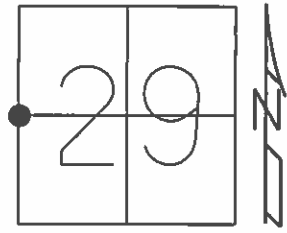


O.D.O.T. DISTRICT 2 SURVEY OFFICE (USE ONLY)

PERSONNEL _____ REFERENCE NO. 4 SHEET 8 OF 33
 NOTES RHOADES DATE 4-14-16 ROUTE SR 19
 H.C. O'DONNELL WEATHER CLOUDY COUNTY SANDUSKY
 R.C. RHOADES TEMP. 40°F TOWNSHIP GREEN CREEK
 _____ SECTION 29
 _____ T 4 N R 16 E

TYPE MONUMENT MAG/WASHER
 ON SURFACE - ~~BELOW~~ ON
 LEFT - ☉ PAV'T - RIGHT ON
_____ TO _____ EDGE PAVEMENT
 S.L.M. 79+85



Grid: Northing: 287743.8159 Easting: 1816677.7165

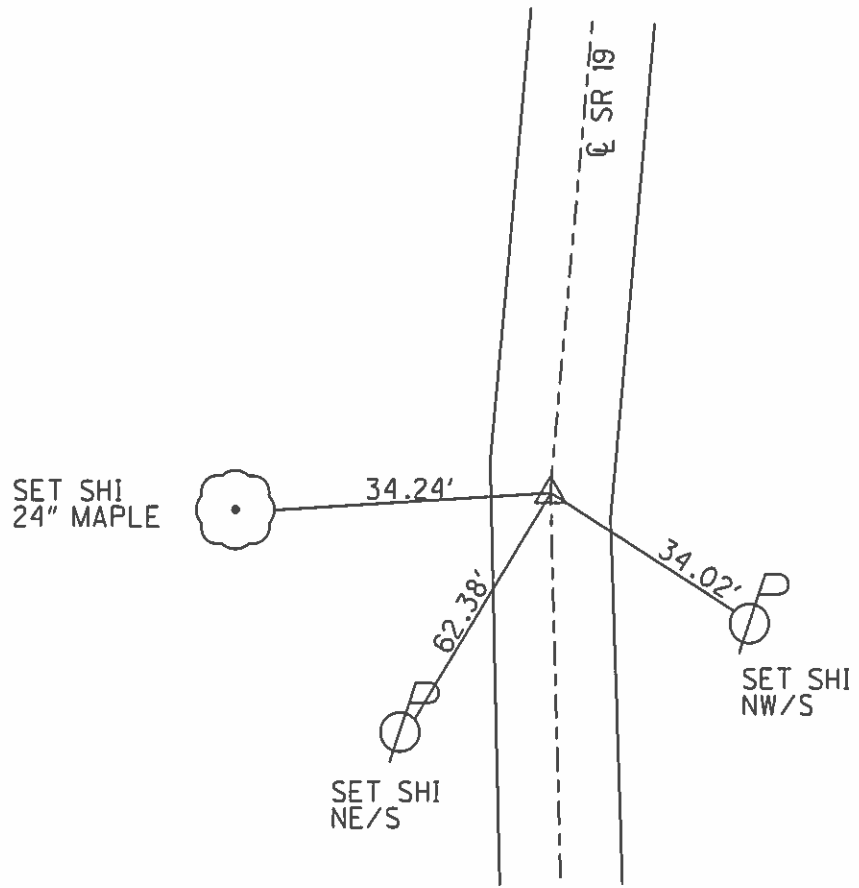
RECORD:
 00°02'00" RT
 PI 53+97.10
 STONewith "+" AND
 PUNCH HOLE 17" BELOW
 REF BOOK #56 "1986"

PK/WASHER
 ATOP PK/WASHER
 ATOP IRON ROD
 ATOP STONE
 WITH "+" CUT AND PUNCH
 HOLE 17" BELOW SURFACE
 REF FIELD BOOK #56

SET MAG NAIL
 09-07-02, DCH

FD MAG/WASHER
 GPS, REF4
 4-14-16, JFO

UNCOVERED
 9-2-16



O.D.O.T. DISTRICT 2 SURVEY OFFICE

PERSONNEL

REFERENCE NO. 4

SHEET 7 OF 31

NOTES Rousos

DATE 04-10-02

ROUTE SR 19

H.C. Homan

WEATHER Sunny

COUNTY Sandusky

R.C. Rousos

TEMP. 50°

TOWNSHIP Green Crk

SECTION 29

T4 N R16 E

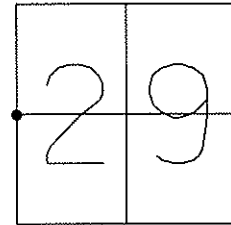
TYPE MONUMENT PK/Washer

ON SURFACE - ~~BELOW~~ On Surface

~~LEFT - C~~ PAVT - RIGHT C

TO EDGE PAVEMENT

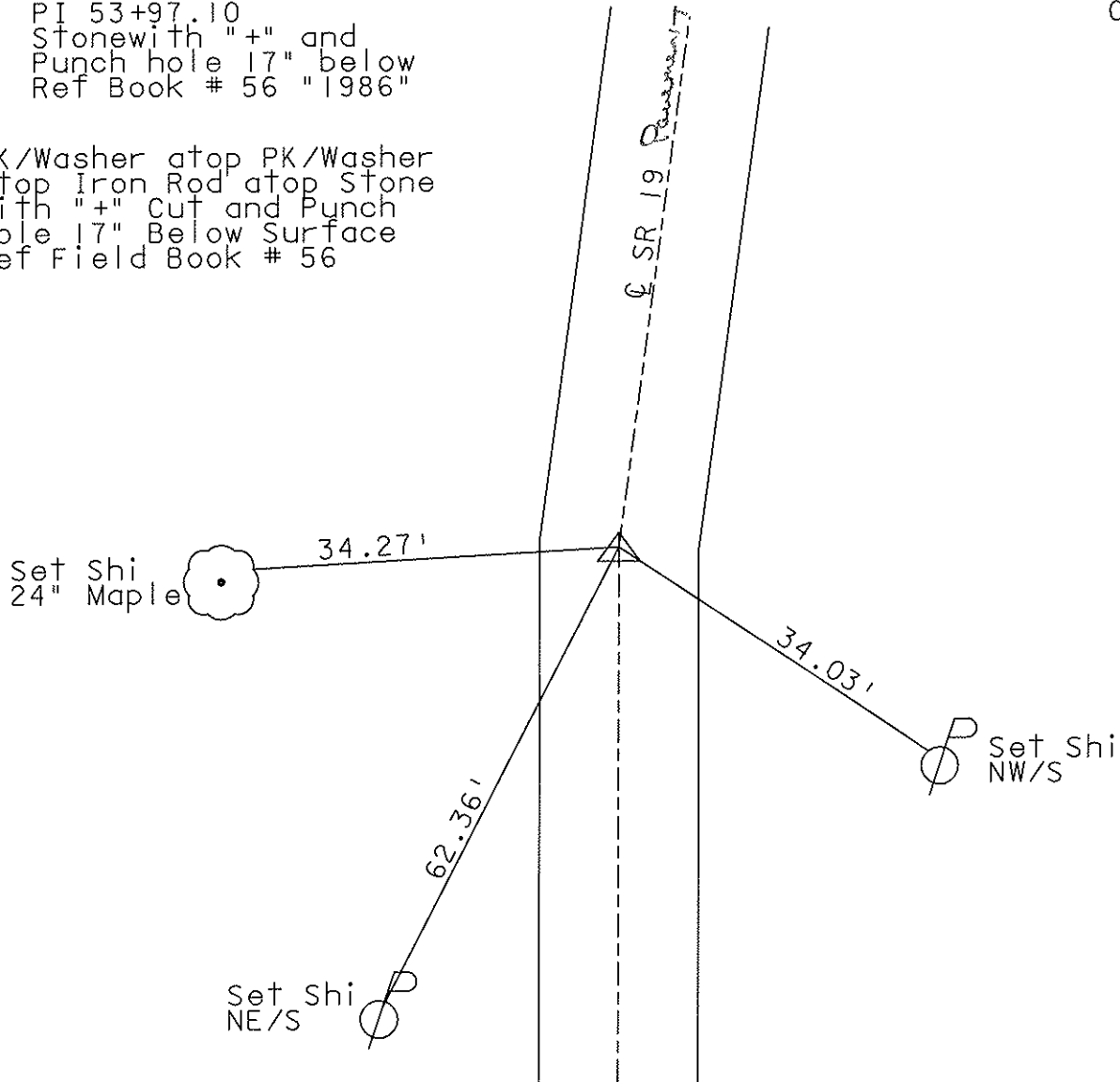
S.L.M. 79+85



Record: 00 02'00" RT
 PI 53+97.10
 Stonewith "+" and
 Punch hole 17" below
 Ref Book # 56 "1986"

Set Mag Nail
 09-17-02
 DCH

PK/Washer atop PK/Washer
 atop Iron Rod atop Stone
 With "+" Cut and Punch
 Hole 17" Below Surface
 Ref Field Book # 56



O.D.O.T. DISTRICT 2 SURVEY OFFICE

PERSONNEL

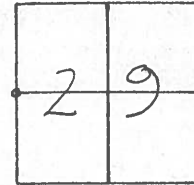
NOTES Cronin
 H.C. Ripple
 R.C. Geyman
Barbour

REFERENCE NO. 4
 DRAWN 9/29/86
 DATE 9/25/86
 WEATHER overcast
 TEMP. 77°

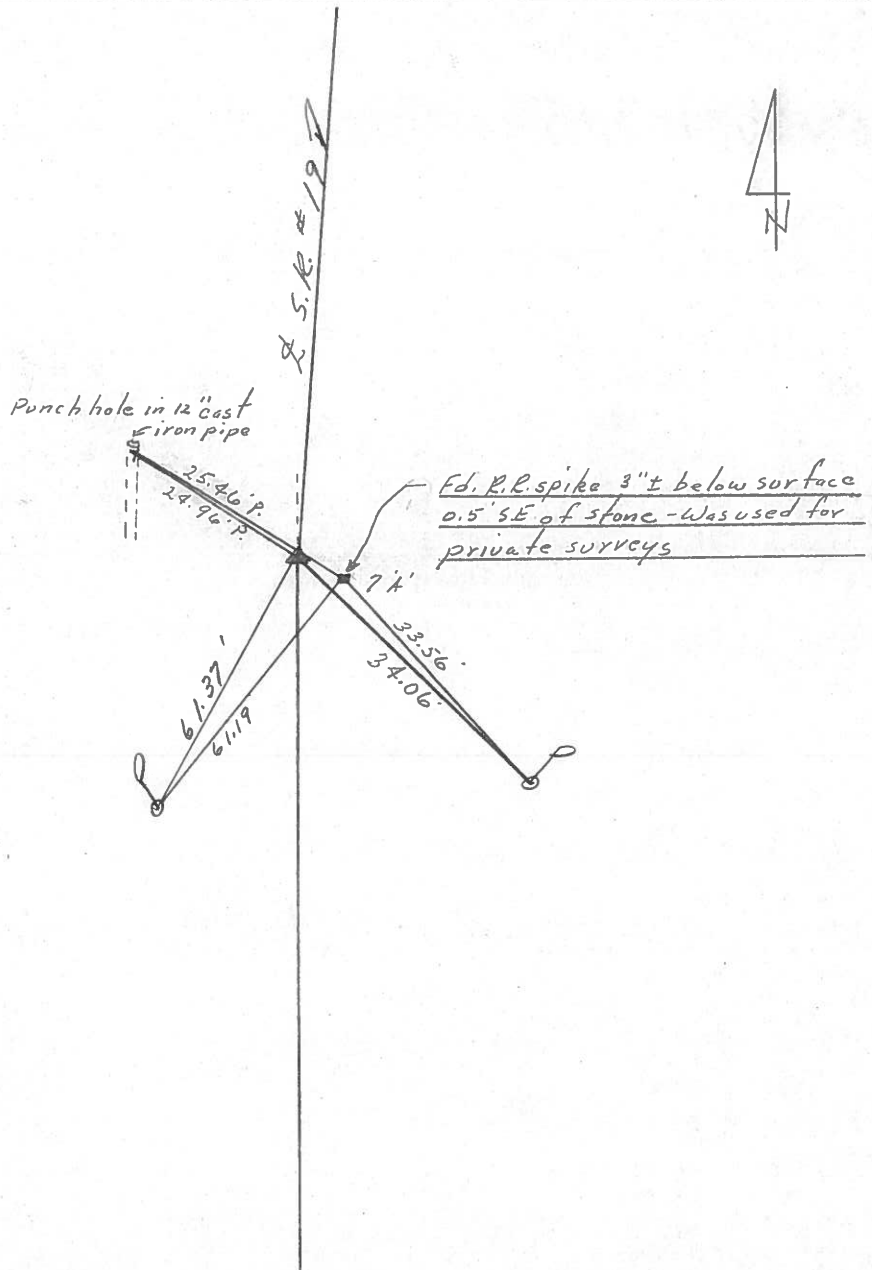
SHEET 7 OF 31

ROUTE #19
 COUNTY Sandusky
 TOWNSHIP GREEN CREEK
 SECTION 29
T 4 N R 10 E

TYPE MONUMENT P.K. & Washer
 ON SURFACE - BELOW on surface
 LEFT - & PAV'T. - RIGHT & Pav't
 TO _____ EDGE PAVEMENT
 S.L.M. _____



A = 00° 02' 00" Rt. Rec.
P.L.
53+97.10
P.K. & washer atop P.K. &
washer atop iron rod atop
stone with 1" cut & punch
hole 17" ± below surface
Ref. Field Book # 56

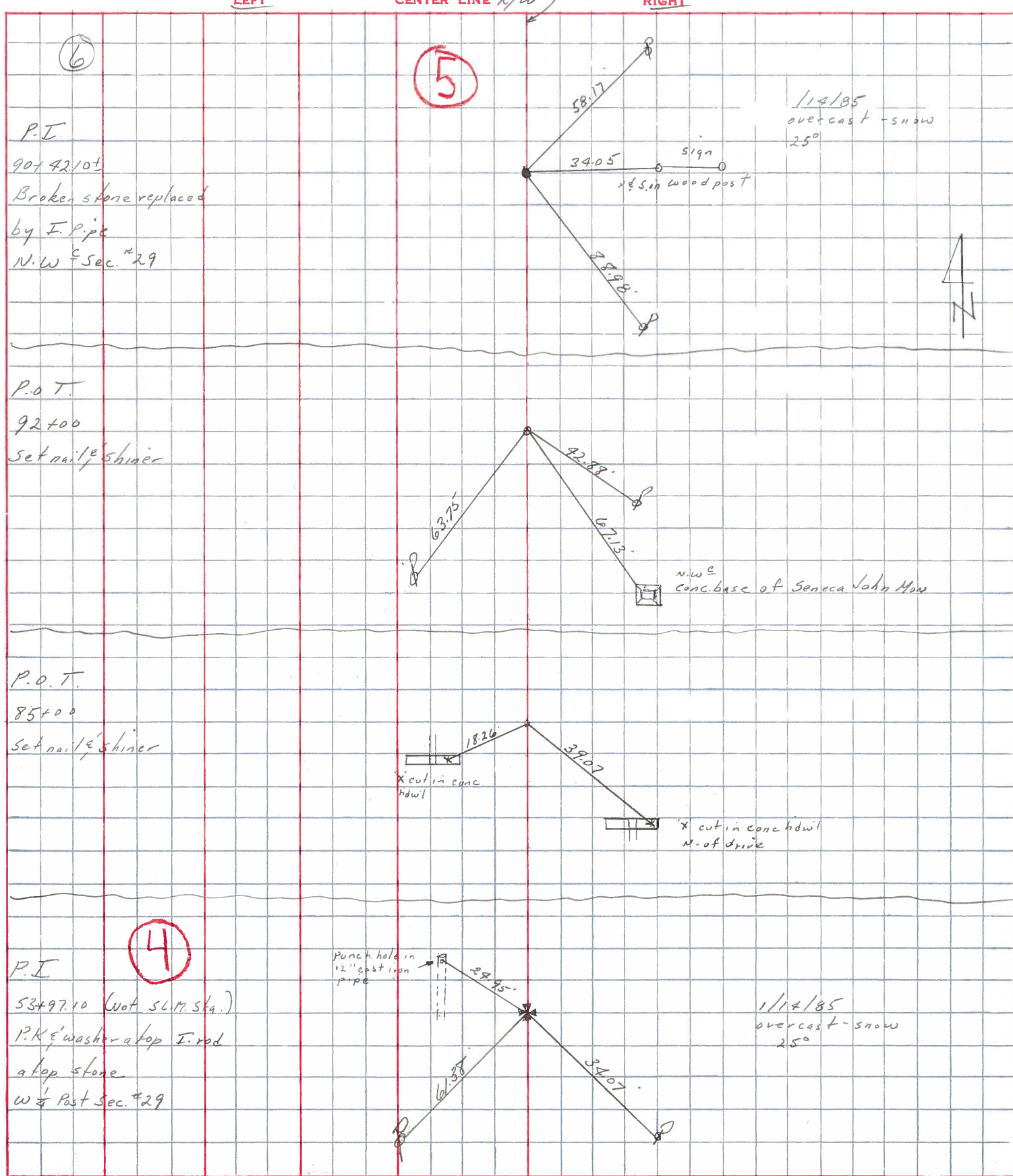


PERSONNEL TITLE PERSONNEL TITLE
 Cronin _____
 Ripple _____
 Geyman _____
 Barbour _____

COUNTY Sandusky DATE 3/13/85
 S. R. # 19 WEATHER overcast
 SEC. Culv. San. 19-01.68 TEMP. 33°

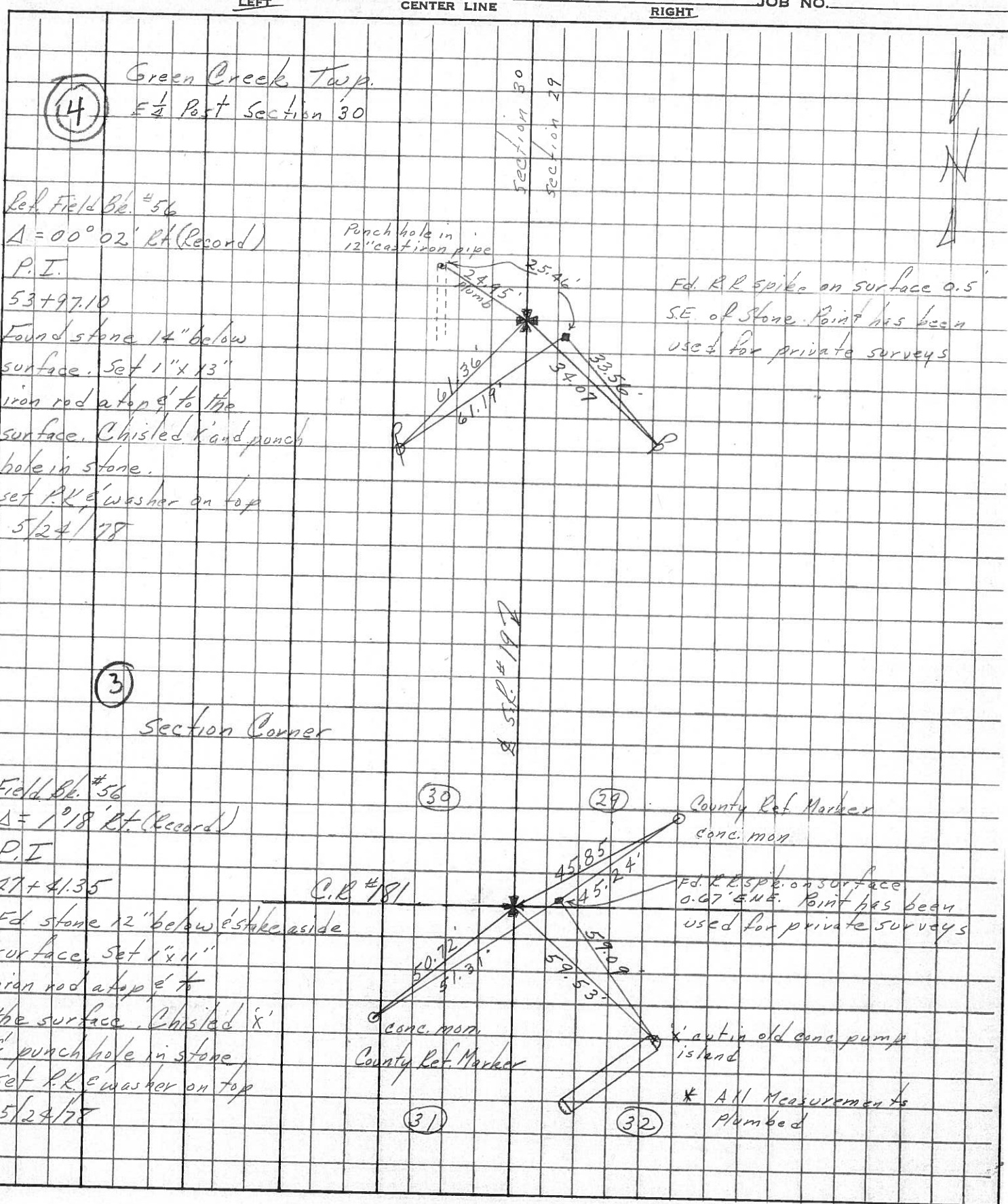
DESCRIPTION Ties for Control Points

JOB NO. _____



PERSONNEL	TITLE	PERSONNEL	TITLE	COUNTY	DATE
Cronin		Schneider		Sandusky	4/20/77
Ripple		Masser		S. R. #19 (I.C.H. 515)	WEATHER sunny
Geyman		Barbour		SEC. 'B'	TEMP. 72°

DESCRIPTION Ties for Control Points



(4)

Green Creek Twp.
E 1/2 Post Section 30

Ref. Field Bk. #56
 $\Delta = 00^{\circ} 02' R$ (Record)
 P.I.
 53+97.10
 Found stone 14" below surface. Set 1" x 13" iron rod atop & to the surface. Chisled 'x' and punch hole in stone. set P.K. & washer on top
 5/24/78

Punch hole in 12" cast iron pipe

Fd. RR spike on surface 0.5' S.E. of Stone. Point has been used for private surveys

(3)

Section Corner

SECTION 30
SECTION 29

Ref. Field Bk. #56
 $\Delta = 1^{\circ} 18' R$ (Record)
 P.I.
 27+41.35
 Fd stone 12" below stake aside surface. Set 1" x 11" iron rod atop & to the surface. Chisled 'x' & punch hole in stone. set P.K. & washer on top
 5/24/78

C.B. #781

County Ref. Marker conc. mon

Fd. R.R. spike on surface 0.67' ENE. Point has been used for private surveys

conc. mon
County Ref. Marker

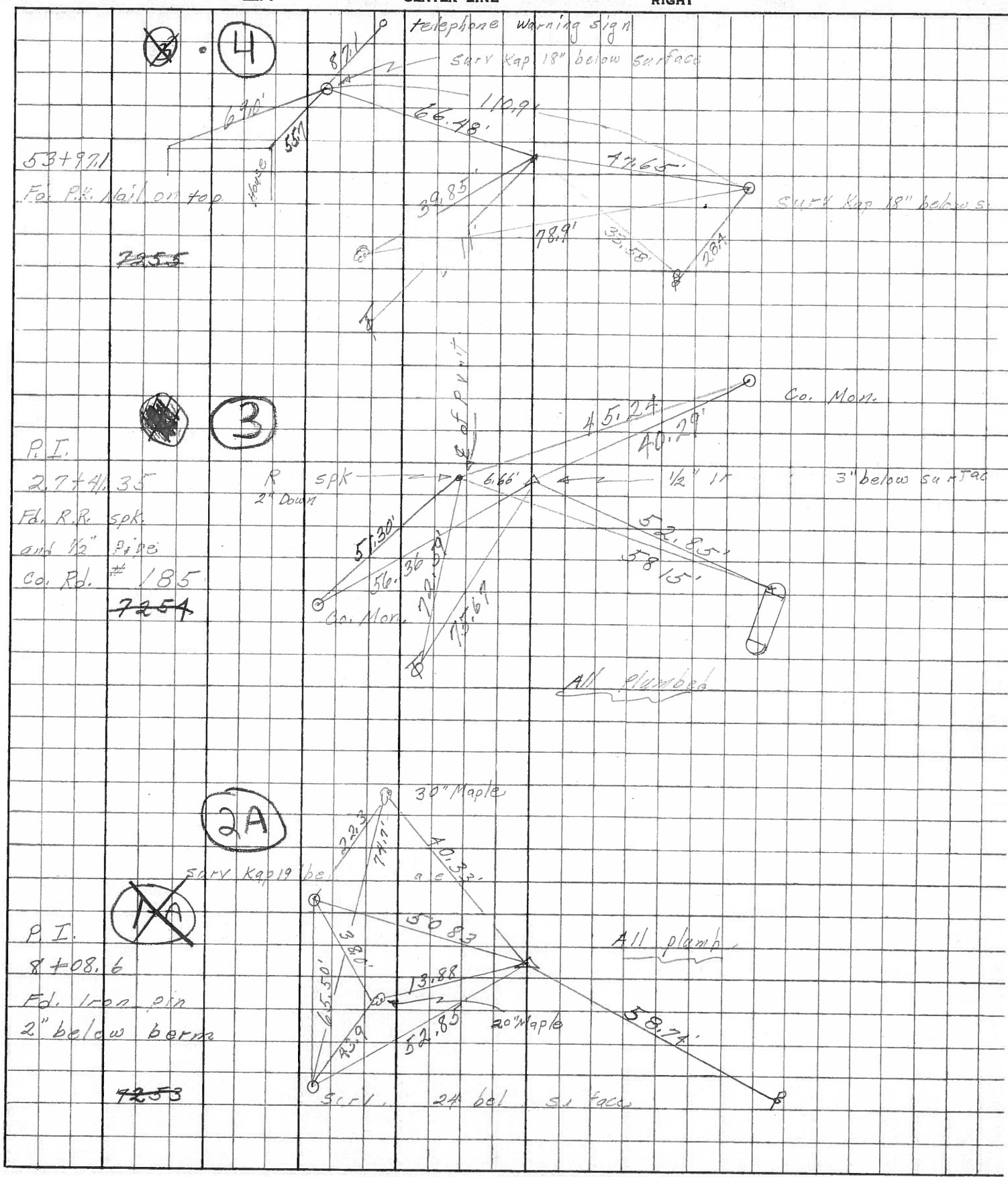
'x' anti old conc. pump island

* All Measurements Plumbed

PERSONNEL TITLE PERSONNEL TITLE
 Schneider _____
 Mosser _____
 Barbour _____

COUNTY Sandusky DATE Jan, 1968
 S. R. # 19 WEATHER _____
 SEC. Seneca Co TEMP. _____

DESCRIPTION Ties for Control Points LEFT CENTER LINE RIGHT JOB NO.



53+97.1
 Fe. P.I. Nail on top
~~7255~~

P.I.
 27+41.35
 Fd. R.R. spk
 and 1/2" pipe
 Co. Rd. # 185
~~7254~~

P.I.
 8+08.6
 Fd. Iron pin
 2" below berm
~~7253~~

telephone warning sign
 SURV Kap 18" below surface
 SURV Kap 18" below s.

Co. Mon.
 3" below surface

30" Maple
 SURV Kap 19" be
 All plumb
 20" Maple
 SURV. 24 bel surface