

O.D.O.T. DISTRICT 2 SURVEY OFFICE (USE ONLY)

PERSONNEL \_\_\_\_\_ REFERENCE NO. 5 SHEET 9 OF 33  
 NOTES RHOADES DATE 4-14-16 ROUTE SR 19  
 H.C. O'DONNELL WEATHER CLOUDY COUNTY SANDUSKY  
 R.C. RHOADES TEMP. 40°F TOWNSHIP GREEN CREEK  
 \_\_\_\_\_ SECTION 19 20 30 29  
 \_\_\_\_\_ T 4 N R 16 E

TYPE MONUMENT MAG SHANK

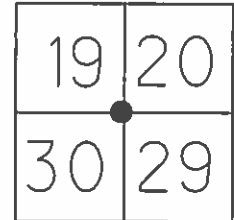
~~ON SURFACE~~ - BELOW 2"

LEFT - ☉ PAV'T - RIGHT ON

- TO - EDGE PAVEMENT

S.L.M. 103+88

Grid: Northing: 590149.4176 Easting: 1816720.0557

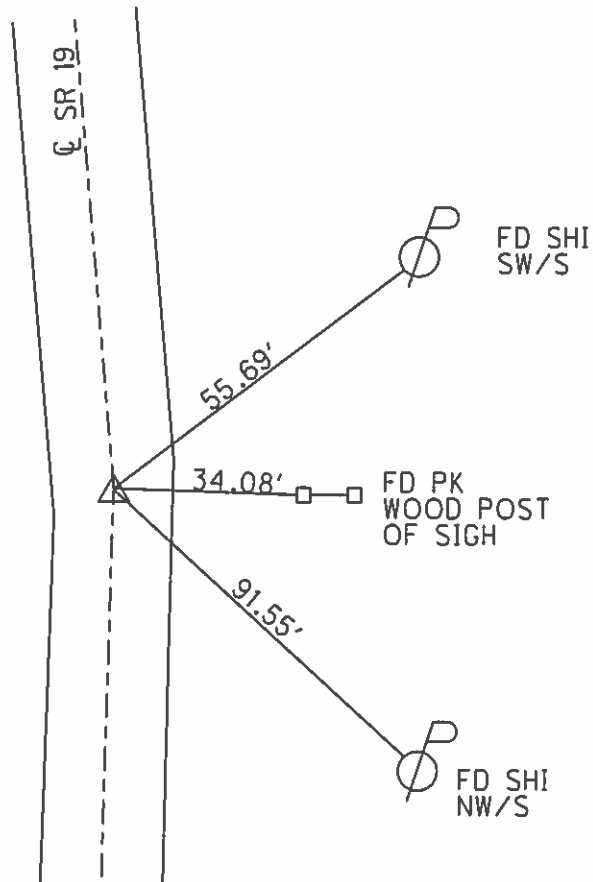


RECORD:  
 $\Delta=00^{\circ}06'00''$ LT  
 P.I. 78+04.20  
 REPLACE STONE  
 WITH I.P.I.PE  
 FIELD BOOK #55

SET MAG NAIL  
 09-17-02, DCH

FD MAG SHANK  
 GPS, REF5  
 4-14-16, JFO

RESET (UNCOVERED SHANK)  
 WITH MAG WASHER  
 9-2-16, JFO



O.D.O.T. DISTRICT 2 SURVEY OFFICE

PERSONNEL

REFERENCE NO. 5

SHEET 8 OF 31

NOTES Rousos

DATE 04-10-02

ROUTE SR 19

H.C. Homan

WEATHER Sunny

COUNTY Sandusky

R.C. Rousos

TEMP. 50°

TOWNSHIP Green Crk

SECTION 29

T4 N R16 E

TYPE MONUMENT Fd I. Pipe

~~ON SURFACE~~ - BELOW 2" Below

~~LEFT - Q PAV'T - RIGHT~~ On Centerline

TO EDGE PAVEMENT

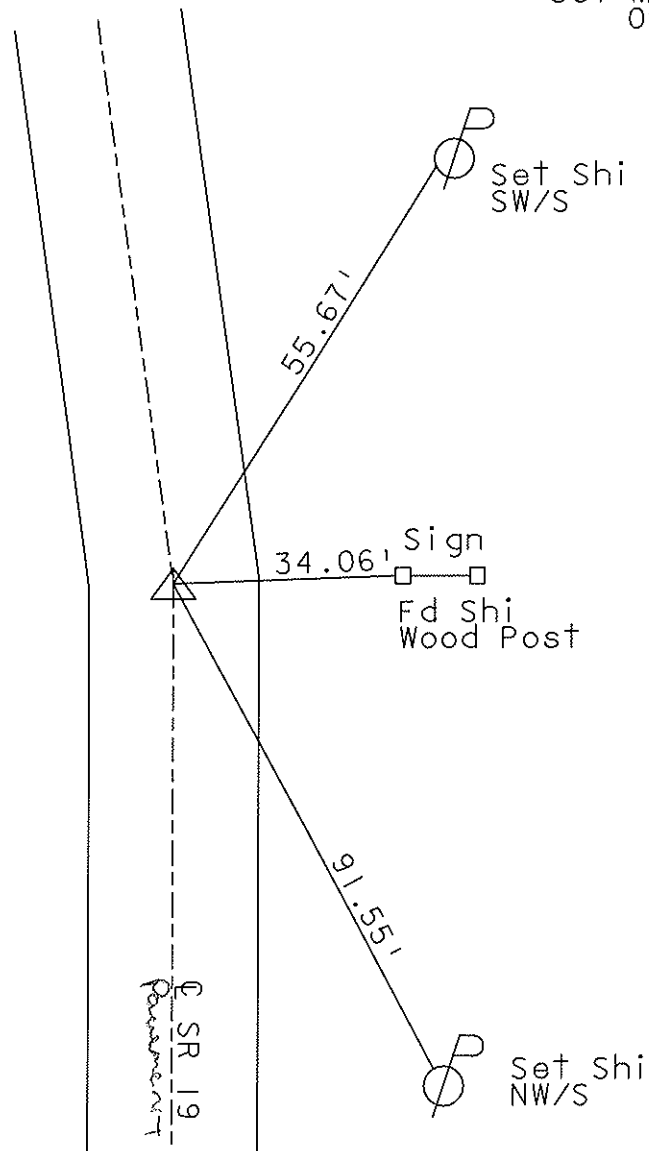
S.L.M. 103+88

19	20
30	29



Record:  $\Delta$  00 06'00" LT  
 P.I. 78+04.20  
 Replace Stone  
 with I. Pipe  
 Field Book #55

Set Mag Nail  
 09-17-02  
 DCH



O.D.O.T. DISTRICT 2 SURVEY OFFICE

PERSONNEL

REFERENCE NO. 5

SHEET 8 OF 31

NOTES Cronin

DRAWN 9/29/86

H.C. Ripple

DATE 11/19/86

ROUTE #19

R.C. Geyman

WEATHER sunny

COUNTY Sandusky

Barbour

TEMP. 35°

TOWNSHIP GREEN CREEK

SECTION 19, 20, 29 & 30

T4 N R 16 E

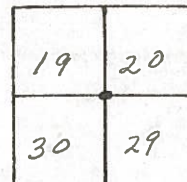
TYPE MONUMENT P.K. Washer

ON SURFACE - BELOW 2" below surface

LEFT- & PAV'T. - RIGHT & Pavt.

TO EDGE PAVEMENT

S.L.M. \_\_\_\_\_



$\Delta = 00^{\circ}06'00''$  Lt. Rec.

P.I.

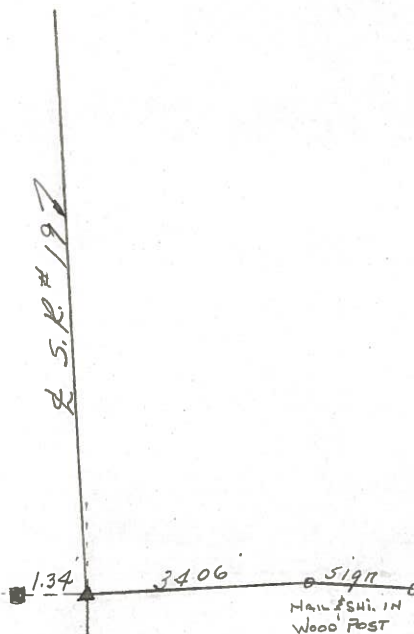
78+04.20

P.K. Washer atop 1 1/2" x 30" I.

Pipe 16" ± below surface.

Replaced stone with I Pipe

Ref. Field Bk. #55



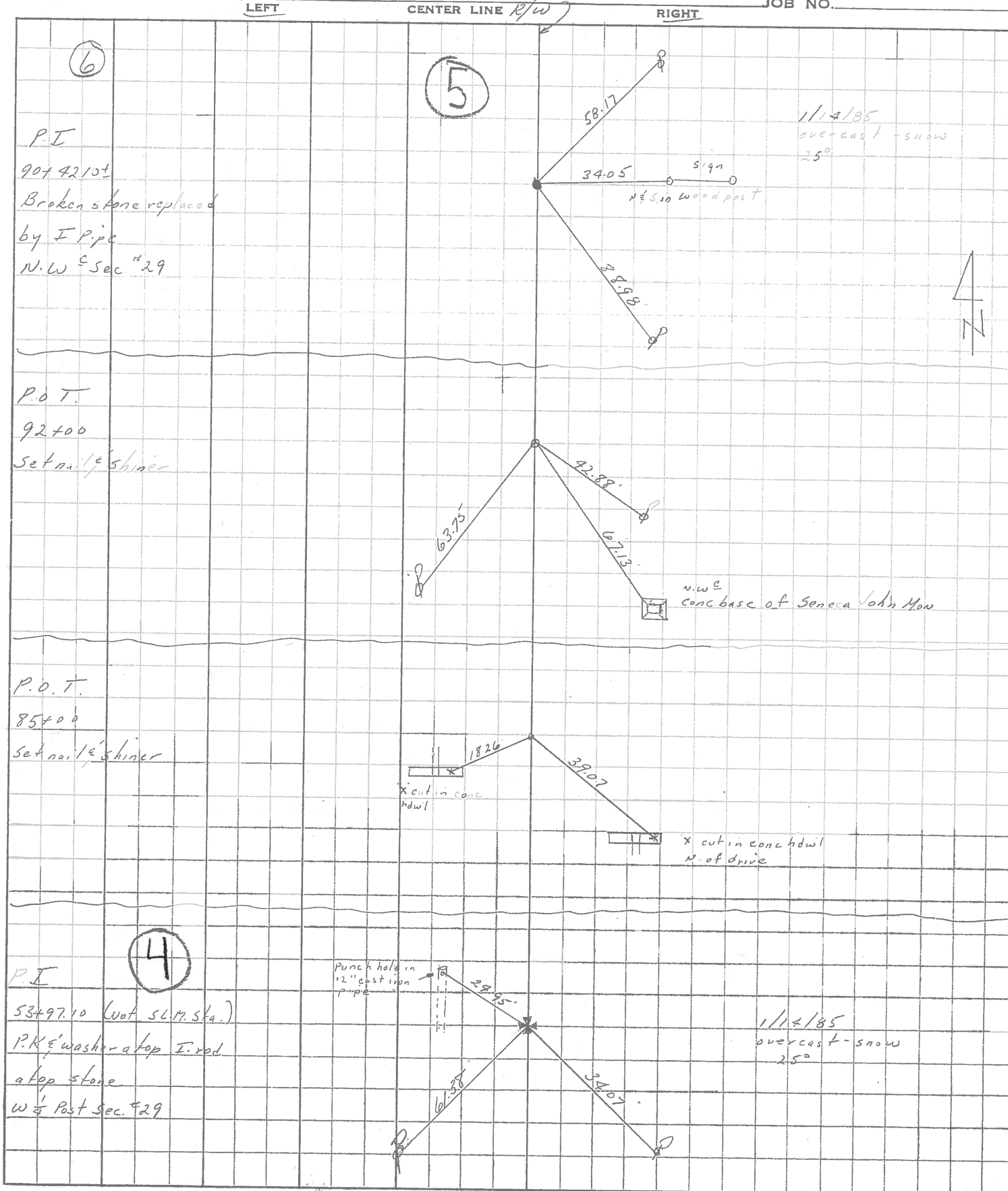
Fd. R.R. spike 3" below surface 1.34' Lt. of stone. Was used for private surveys.

PERSONNEL	TITLE	PERSONNEL	TITLE
<u>Cronin</u>			
<u>Ripple</u>			
<u>Geyman</u>			
<u>Barbour</u>			

COUNTY Sandusky DATE 3/13/85  
 S. R. # 19 WEATHER overcast  
 SEC. Culv. San 19-01.68 TEMP. 33°

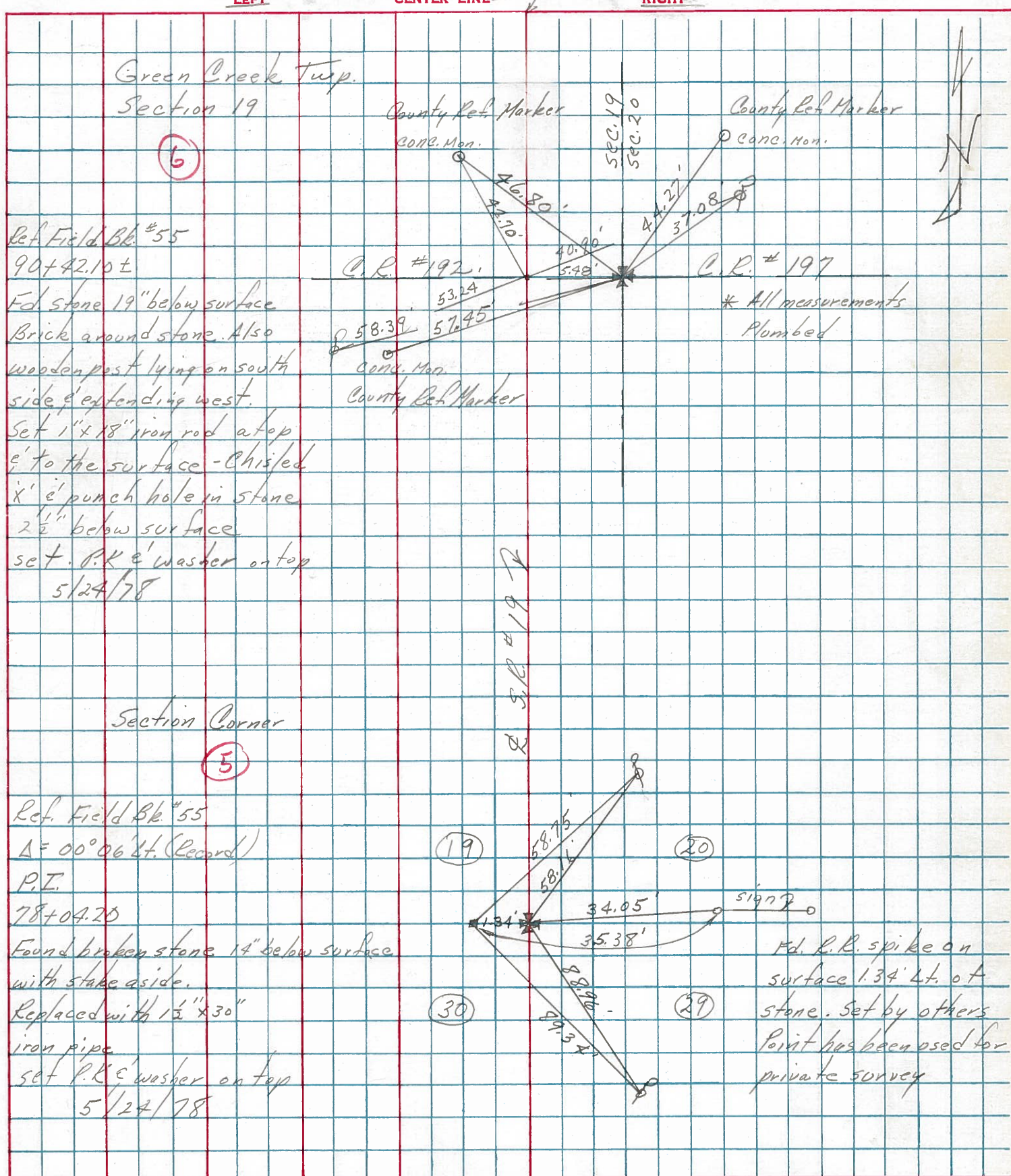
DESCRIPTION Ties for Control Points

JOB NO. \_\_\_\_\_



PERSONNEL	TITLE	PERSONNEL	TITLE	COUNTY	DATE
Cronin		Schneider		Sandusky	4/20/77
Pippel		Mosser		S. R. #19 (I.C.H. 515)	WEATHER sunny
Geyman		Barbour		SEC. B	TEMP. 72°

DESCRIPTION Ties for Control Points JOB NO. \_\_\_\_\_



Green Creek Twp.  
Section 19

(6)

Ref. Field Bk #55  
90+42.10±  
Fd. stone 19" below surface  
Brick around stone. Also  
wooden post lying on south  
side & extending west.  
Set 1" x 18" iron rod atop  
& to the surface - Chisled  
x' & punch hole in stone  
2 1/2" below surface  
set P.R. & washer on top  
5/24/78

County Ref Marker  
conc. Mon.  
46.80'  
41.70'  
40.00'  
5.48'  
53.24'  
57.45'  
58.39'  
conc. Mon.  
County Ref Marker  
C.R. #192  
C.R. #197  
\* All measurements  
Plumbed

Section Corner

(5)

Ref. Field Bk #55  
Δ = 00° 06' Lt. (Record)  
P.I.  
78+04.20  
Found broken stone 14" below surface  
with stake aside.  
Replaced with 1 1/2" x 30"  
iron pipe  
set P.R. & washer on top  
5/24/78

(19) 58.75'  
58.1'  
34.95'  
35.38'  
1.34'  
38.80'  
29.52'  
(20)  
sign  
Fd. R.R. spike on  
surface 1.34' Lt. of  
stone. Set by others  
Point has been used for  
private survey  
(29)