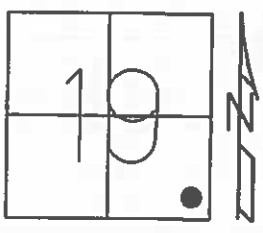


O.D.O.T. DISTRICT 2 SURVEY OFFICE (USE ONLY)

PERSONNEL _____ REFERENCE NO. 5 A SHEET 10 OF 33

NOTES RHOADES DATE 4-15-16 ROUTE SR 19
 H.C. O'DONNELL WEATHER CLOUDY COUNTY SANDUSKY
 R.C. RHOADES TEMP. 40°F TOWNSHIP GREEN CREEK
 SECTION 19
 T 4 N R 16 E

TYPE MONUMENT MAG/WASHER
 ON SURFACE - ~~BELOW~~ ON
 LEFT - ☉ PAV'T - RIGHT ON
- TO - EDGE PAVEMENT
 S.L.M. 116+27

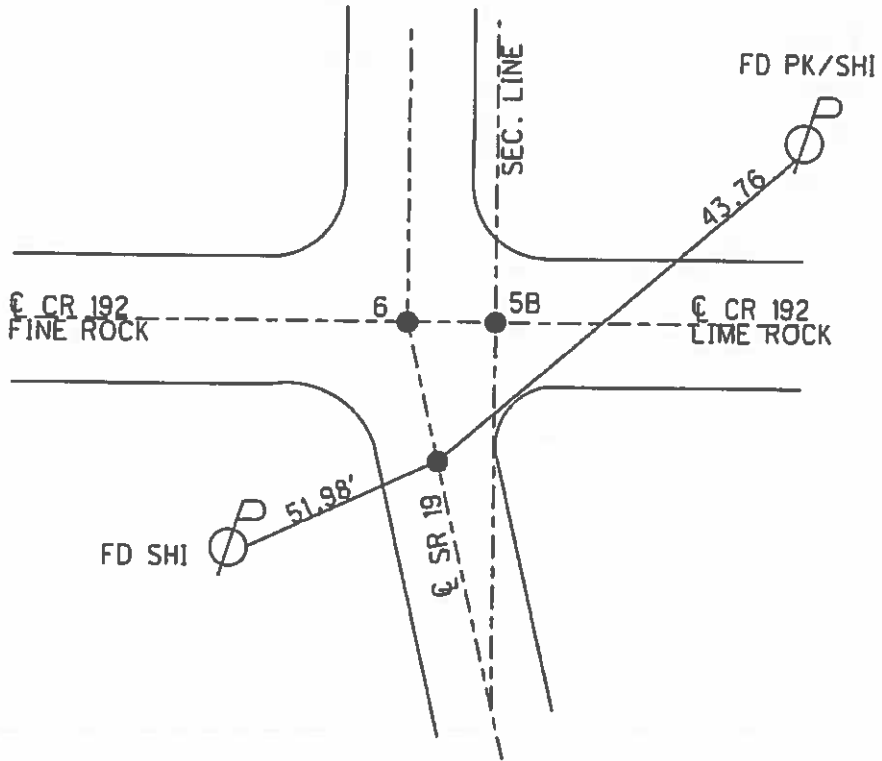


Grid: Northing: 591382.0365 Easting: 1816739.7190

RECORD: 0=00 AHD.
 90+42.10±
 PK/WASHER
 ATOP PK/WASHER
 ATOP IRON ROD
 ATOP STONE WITH
 "X" CUT & PUNCH HOLE
 22" BELOW SURFACE
 REF. FIELD BOOK #55
 1986

NOTE: DIS. REF 5A TO REF 5B = 6.72'
 DIS. REF 5A TO REF 6 = 3.92'
 DIS. REF 5B TO REF 6 = 5.45'

SET MAG NAIL
 09-17-02, DCH
 FD MAG/WASHER
 GPS, REFA5
 4-15-16, JFO
 POINT
 UNCOVERED
 7-2-16, JFO



O.D.O.T. DISTRICT 2 SURVEY OFFICE

PERSONNEL

REFERENCE NO. 6

SHEET 9 OF 31

NOTES Rousos

DATE 04-10-02

ROUTE SR 19

H.C. Homan

WEATHER Sunny

COUNTY Sandusky

R.C. Rousos

TEMP. 50°

TOWNSHIP Green Crk

SECTION 19

T4 N R16 E

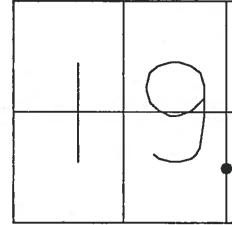
TYPE MONUMENT PK/Washer

ON SURFACE - ~~BELOW~~ On Surface

LEFT - CL PAV'T - RIGHT A&C on CL B-5.5' RT

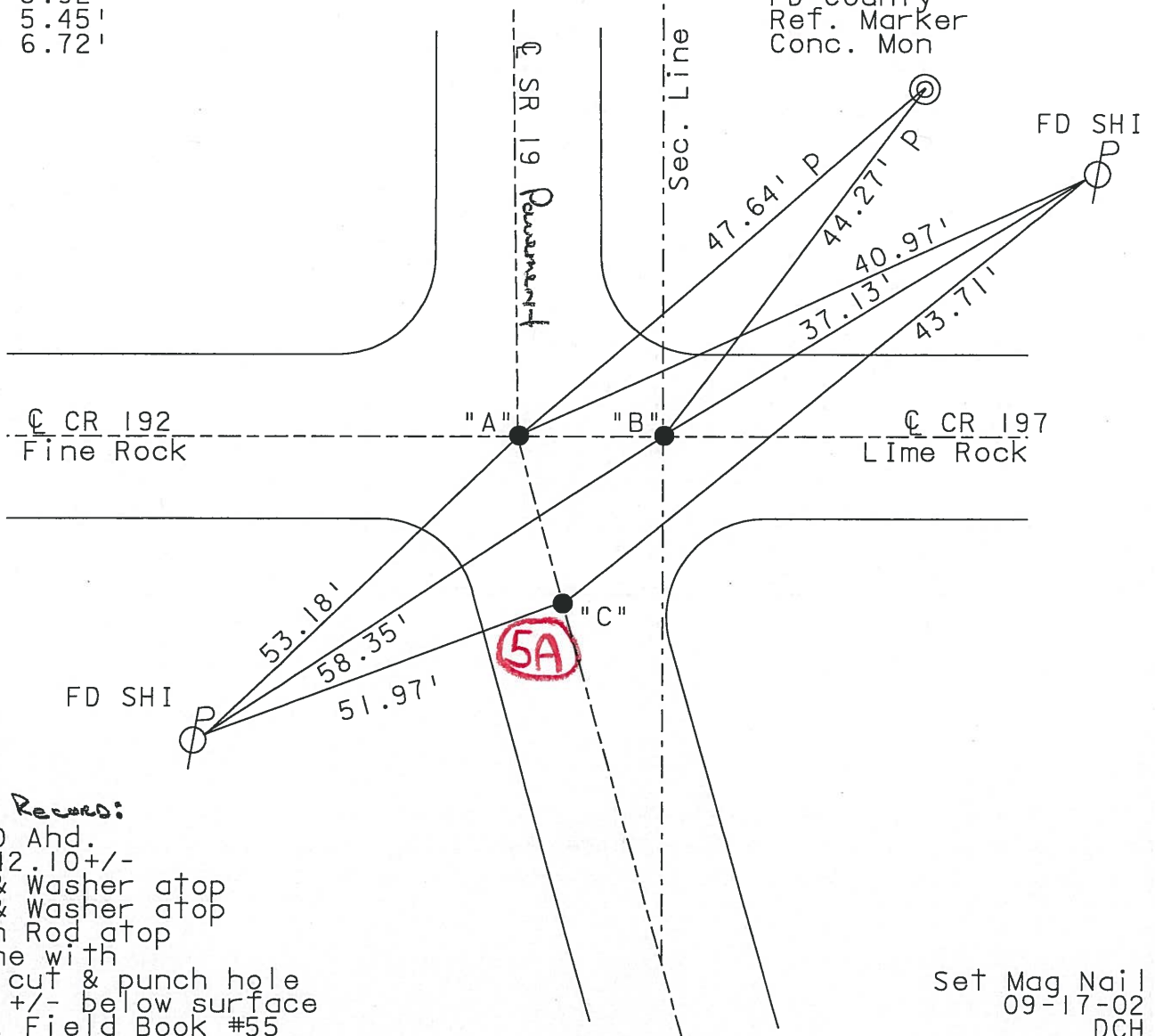
TO EDGE PAVEMENT

S.L.M. 116+27 , 116+31



A-C 3.92'
A-B 5.45'
B-C 6.72'

FD County
Ref. Marker
Conc. Mon



1986 Revis:

0+00 Ahd.
90+42.10+/-
PK & Washer atop
PK & Washer atop
Iron Rod atop
stone with
"X" cut & punch hole
22" +/- below surface
Ref. Field Book #55

Set Mag Nail
09-17-02
DCH