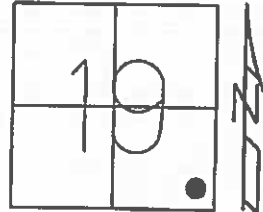


O.D.O.T. DISTRICT 2 SURVEY OFFICE (USE ONLY)

PERSONNEL _____ REFERENCE NO. 5 B SHEET 11 OF 33

NOTES RHOADES DATE 4-15-16 ROUTE SR 19
 H.C. O'DONNELL WEATHER CLOUDY COUNTY SANDUSKY
 R.C. RHOADES TEMP. 40°F TOWNSHIP GREEN CREEK
 SECTION 19
 T 4 N R 16 E

TYPE MONUMENT PK/WASHER
~~ON SURFACE~~ - BELOW 2.5"
~~LEFT~~ - ☉ PAV'T - RIGHT 5.5'
 - TO - EDGE PAVEMENT
 S.L.M. 116+31



Grid: Northing: 591385.8484 Easting: 1816745.2679

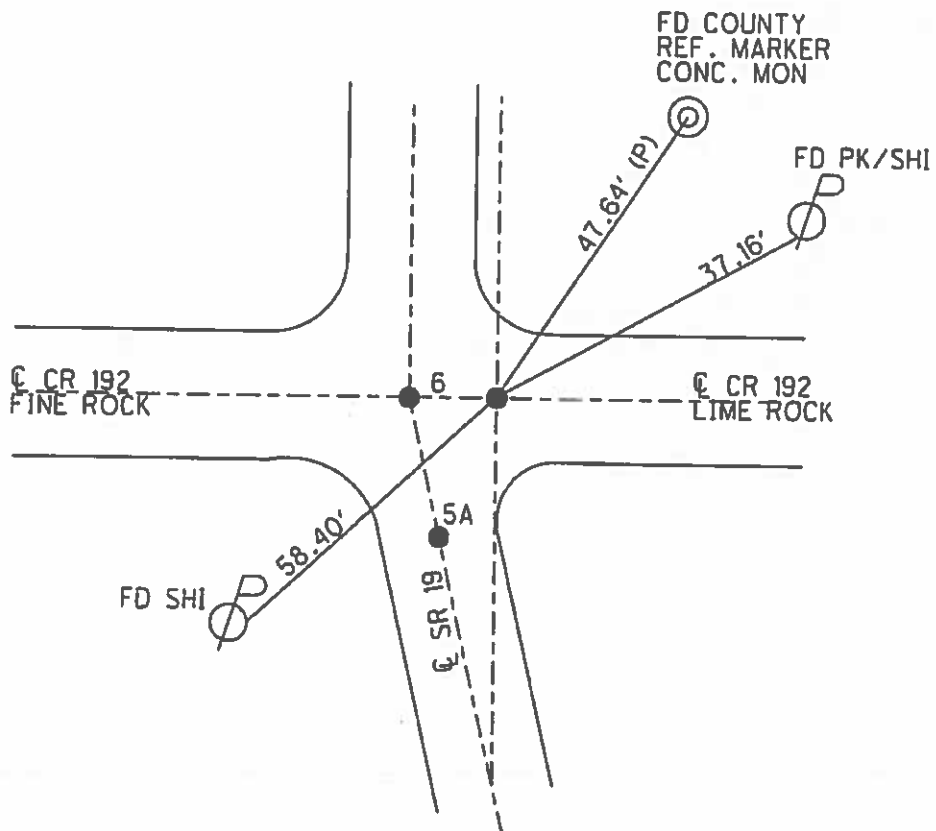
RECORD: 0=00 AHD.
 90+42.10±
 PK/WASHER
 ATOP PK/WASHER
 ATOP IRON ROD
 ATOP STONE WITH
 "X" CUT & PUNCH HOLE
 22" BELOW SURFACE
 REF. FIELD BOOK #55
 1986

NOTE: DIS. REF 5A TO REF 5B = 6.72'
 DIS. REF 5A TO REF 6 = 3.92'
 DIS. REF 5B TO REF 6 = 5.45'

SET MAG NAIL
 09-17-02, DCH

FD PK/WASHER
 2.5" DOWN
 GPS, REFB5
 4-15-16, JFO

POINT
 UNCOVERED
 7-2-16, JFO



O.D.O.T. DISTRICT 2 SURVEY OFFICE

PERSONNEL _____

REFERENCE NO. 6

SHEET 9 OF 31

NOTES Rousos

DATE 04-10-02

ROUTE SR 19

H.C. Homan

WEATHER Sunny

COUNTY Sandusky

R.C. Rousos

TEMP. 50°

TOWNSHIP Green Crk

SECTION 19

T4 N R16 E

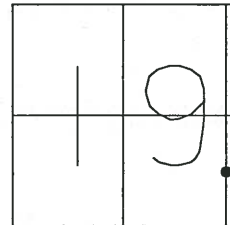
TYPE MONUMENT PK/Washer

ON SURFACE - ~~BELOW~~ On Surface

LEFT - Q PAV'T - RIGHT A&C on CL B-5.5' RT

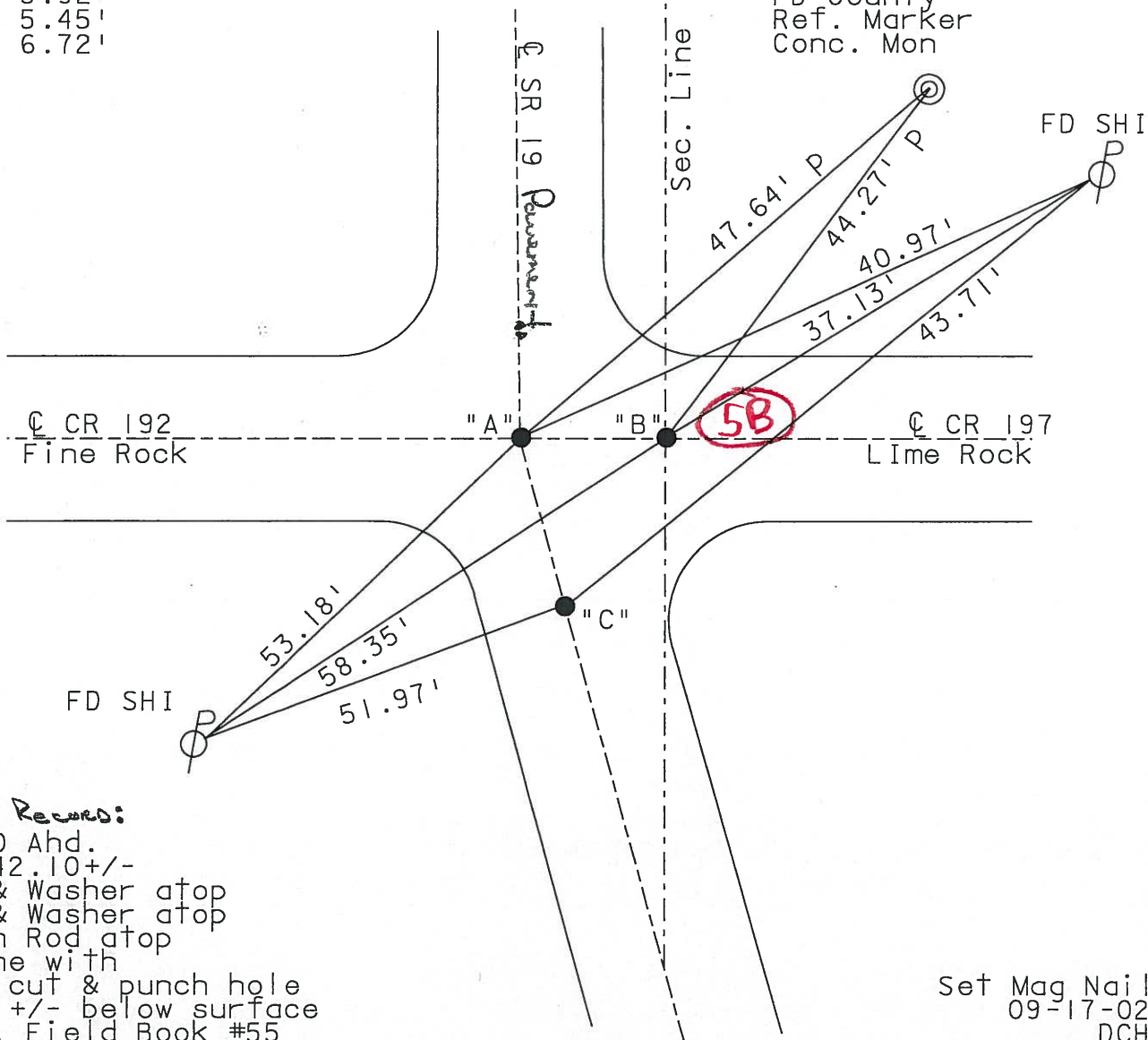
TO EDGE PAVEMENT

S.L.M. 116+27 , 116+31



A-C 3.92'
A-B 5.45'
B-C 6.72'

FD County
Ref. Marker
Conc. Mon



1986 Records:

0=00 Ahd.
90+42.10+/-
PK & Washer atop
PK & Washer atop
Iron Rod atop
stone with
"X" cut & punch hole
22" +/- below surface
Ref. Field Book #55

Set Mag Nail
09-17-02
DCH

O.D.O.T. DISTRICT 2 SURVEY OFFICE

PERSONNEL

NOTES Cronin

H.C. Ripple

R.C. Geyman

Barbour

REFERENCE NO. 6

DRAWN 9/29/86

DATE 9/25/86

WEATHER sunny

TEMP. 87°

SHEET 9 OF 31

ROUTE #19

COUNTY Sandusky

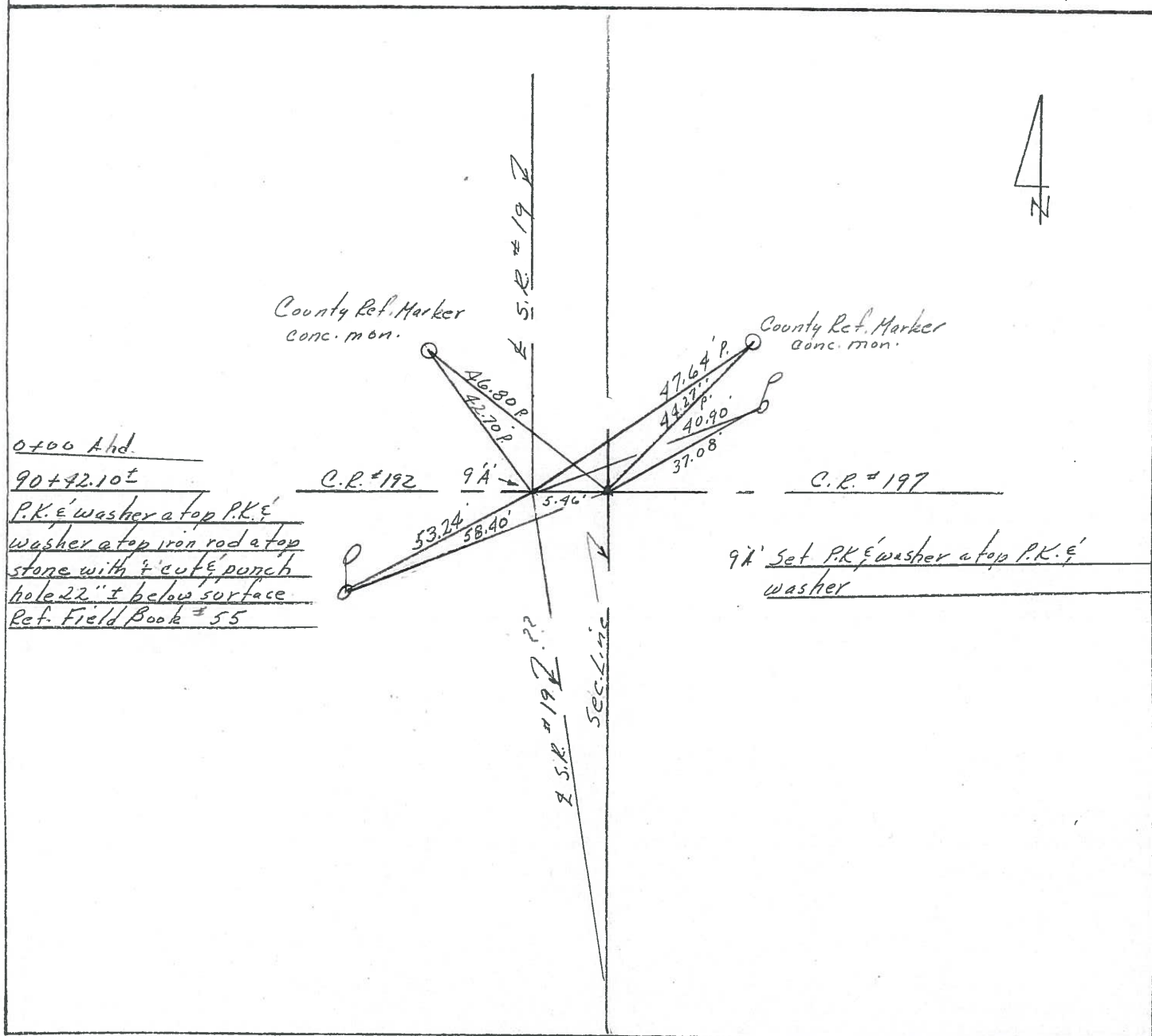
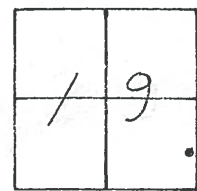
TOWNSHIP GREEN CREEK

SECTION 19

T 4 N R 16 E

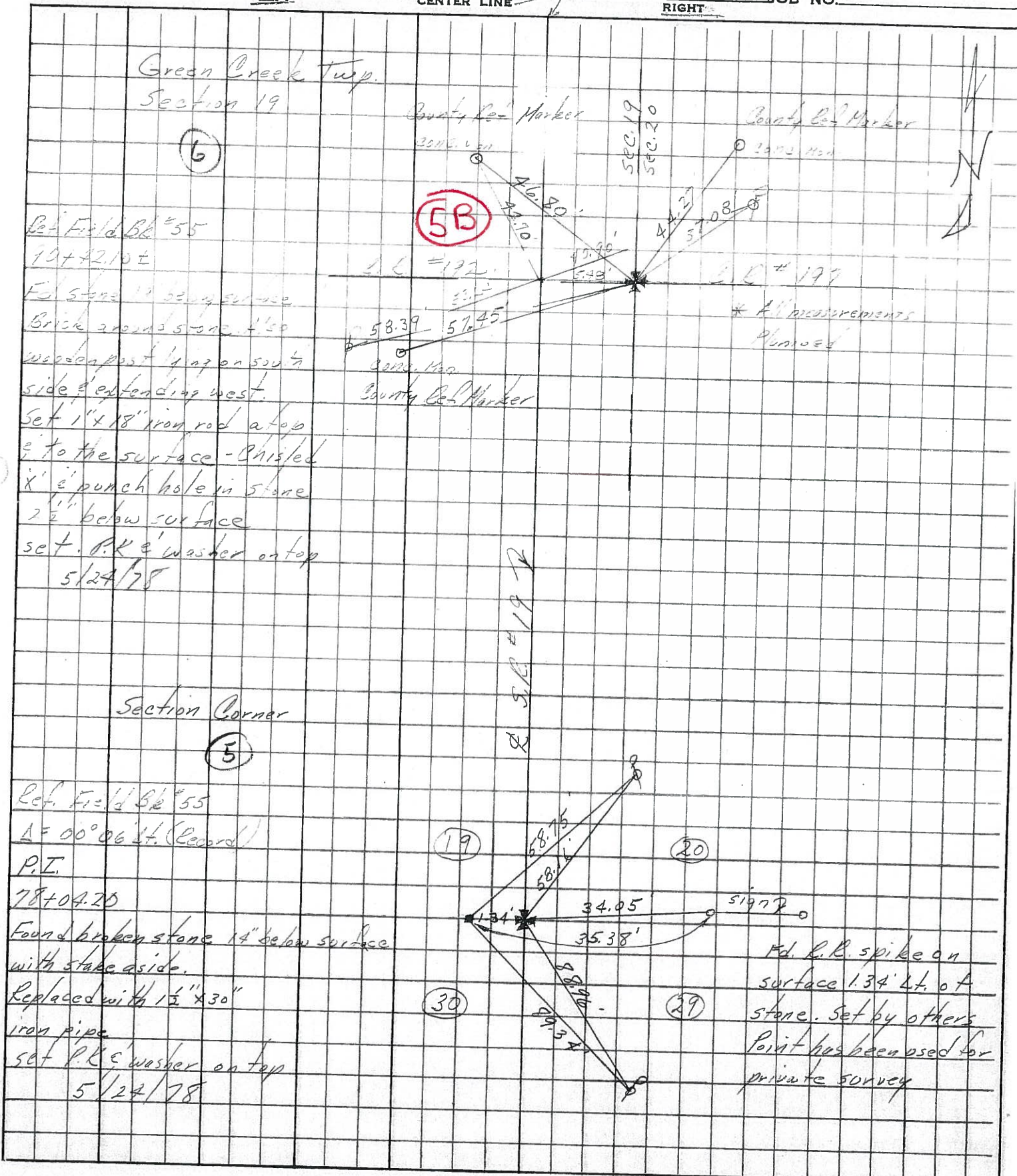
TYPE MONUMENT P.K. & washer
 ON SURFACE - BELOW on surface
 LEFT - € PAV'T. - RIGHT 5.5' ± Rt. & Pavt.
 TO EDGE PAVEMENT
 S.L.M. _____

5B



PERSONNEL TITLE PERSONNEL TITLE COUNTY Sandusky DATE 4/20/77
 Cronin Schneider
 Rippke Messer
 Geyman Barbour
 S. R. #19 (I.C.H. 515) WEATHER sunny
 SEC. B TEMP. 72°

DESCRIPTION Ties for Control Points LEFT CENTER LINE RIGHT JOB NO.



Green Creek Twp.
Section 19

(6)

County Cor. Marker

3015.11 ft

(5B)

County Cor. Marker

2973.11 ft

Ref. Field Bk #55

79+42.10 ±

Fd. stone 12" below surface

Brick around stone 4' x 5'

wooden post 1' high on south side & extending west.

Set 1" x 18" iron rod atop & to the surface - Chisped 1/2" & punch hole in stone 2 1/2" below surface

set P.C. & washer on top
5/24/78

L.C. #192

58.39 57.45

3015.11 ft

County Cor. Marker

R.C. #199

* All measurements Planned

Section Corner

(5)

Ref. Field Bk #55

Δ = 00° 06' 11" (Record)

P.I.

78+04.20

Found broken stone 14" below surface with stake aside.

Replaced with 1 1/2" x 30"

iron pipe

set P.C. & washer on top
5/24/78

(19)

(20)

(30)

(29)

sign

Fd. R.R. spike on surface 1.34' Lt. of stone. Set by others. Point has been used for private survey