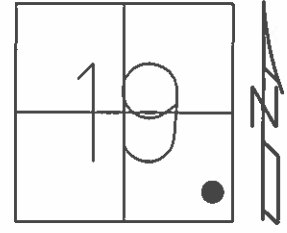


O.D.O.T. DISTRICT 2 SURVEY OFFICE (USE ONLY)

PERSONNEL _____ REFERENCE NO. 6 SHEET 12 OF 33
 NOTES RHOADES DATE 4-15-16 ROUTE SR 19
 H.C. O'DONNELL WEATHER CLOUDY COUNTY SANDUSKY
 R.C. RHOADES TEMP. 40°F TOWNSHIP GREEN CREEK
 _____ SECTION 19
 _____ T 4 N R 16 E

TYPE MONUMENT MAG/WASHER
 ON SURFACE - ~~BELOW~~ ON
 LEFT - ☉ PAV'T - RIGHT ON
- TO - EDGE PAVEMENT
 S.L.M. 116+31

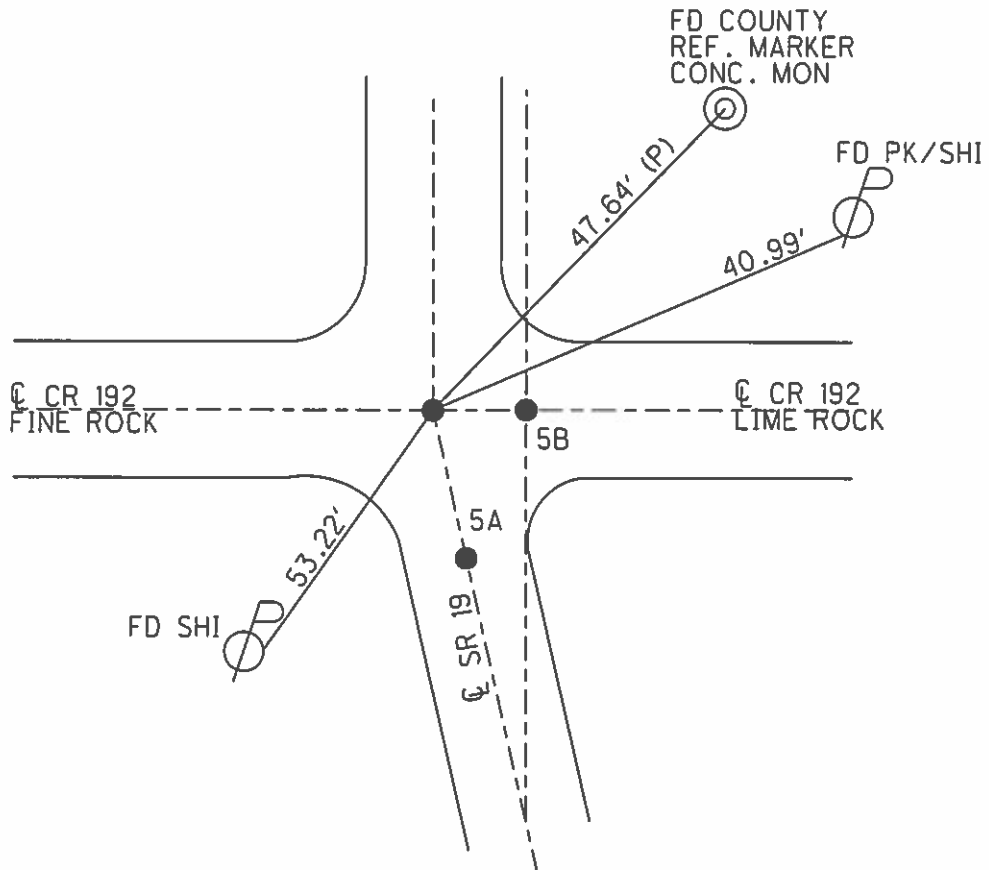


Grid: Northing: 591385.9374 Easting: 1816739.8071

RECORD: 0=00 AHD.
 90+42.10±
 PK/WASHER
 ATOP PK/WASHER
 ATOP IRON ROD
 ATOP STONE WITH
 "X" CUT & PUNCH HOLE
 22" BELOW SURFACE
 REF. FIELD BOOK #55
 1986

NOTE: DIS. REF 5A TO REF 5B= 6.72'
 DIS. REF 5A TO REF 6 = 3.92'
 DIS. REF 5B TO REF 6 = 5.45'

SET MAG NAIL
 09-17-02, DCH
 FD MAG/WASHER
 GPS, REF6
 4-15-16, JFO
 POINT
 UNCOVERED
 7-2-16, JFO



O.D.O.T. DISTRICT 2 SURVEY OFFICE

PERSONNEL

REFERENCE NO. 6

SHEET 9 OF 31

NOTES Rousos

DATE 04-10-02

ROUTE SR 19

H.C. Homan

WEATHER Sunny

COUNTY Sandusky

R.C. Rousos

TEMP. 50°

TOWNSHIP Green Crk

SECTION 19

T4 N R16 E

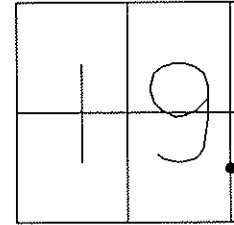
TYPE MONUMENT PK/Washer

ON SURFACE - ~~BELOW~~ On Surface

LEFT - Q PAV'T - RIGHT A&C on CL B-5.5' RT

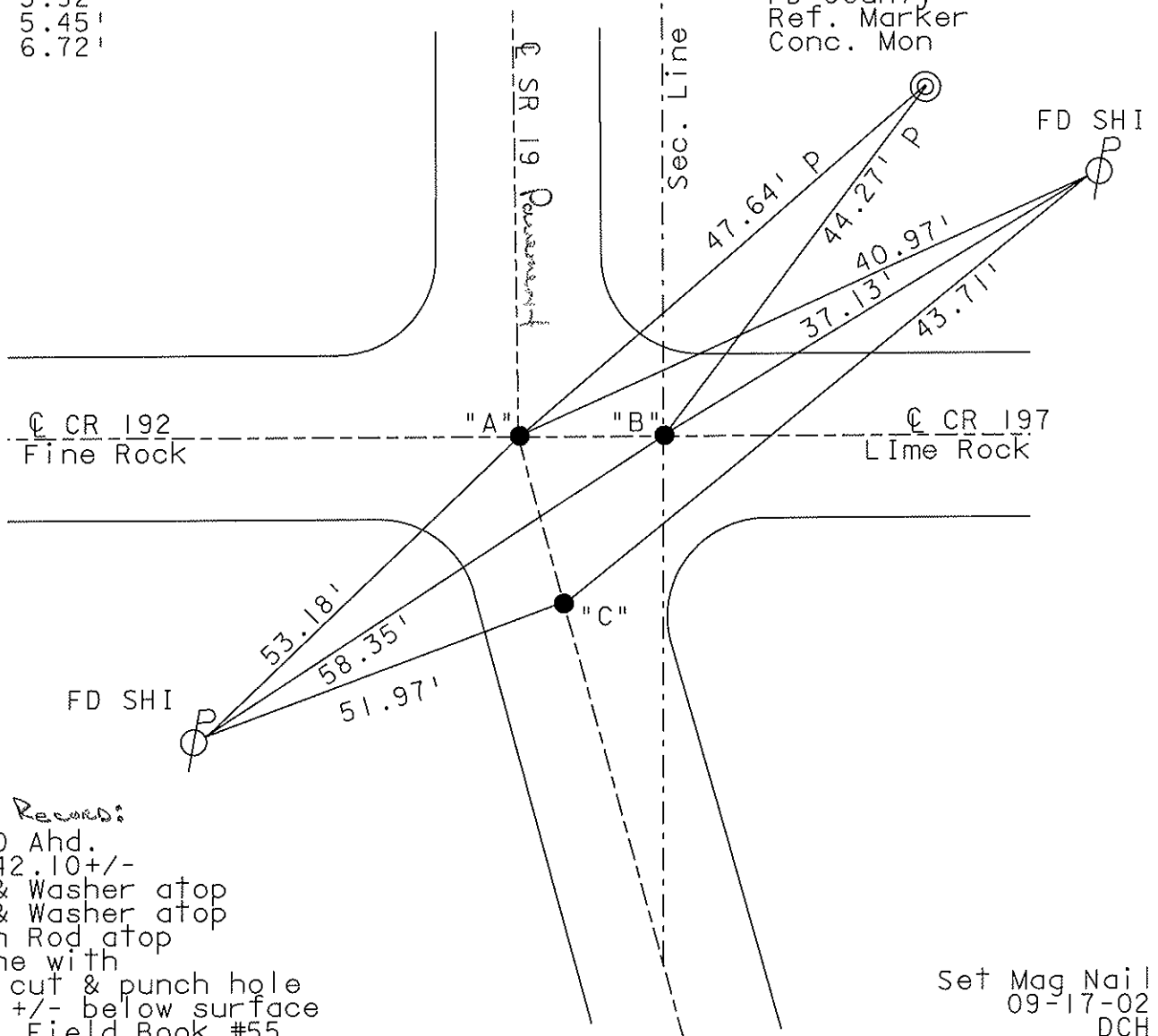
TO EDGE PAVEMENT

S.L.M. 116+27 , 116+31



A-C 3.92'
A-B 5.45'
B-C 6.72'

FD County
Ref. Marker
Conc. Mon



1986 Record:

0=00 Ahd.
90+42.10+/-
PK & Washer atop
PK & Washer atop
Iron Rod atop
stone with
"X" cut & punch hole
22" +/- below surface
Ref. Field Book #55

Set Mag Nail
09-17-02
DCH

O.D.O.T. DISTRICT 2 SURVEY OFFICE

PERSONNEL

NOTES Cronin
 H.C. Ripple
 R.C. Geyman
Barbour

REFERENCE NO. 6

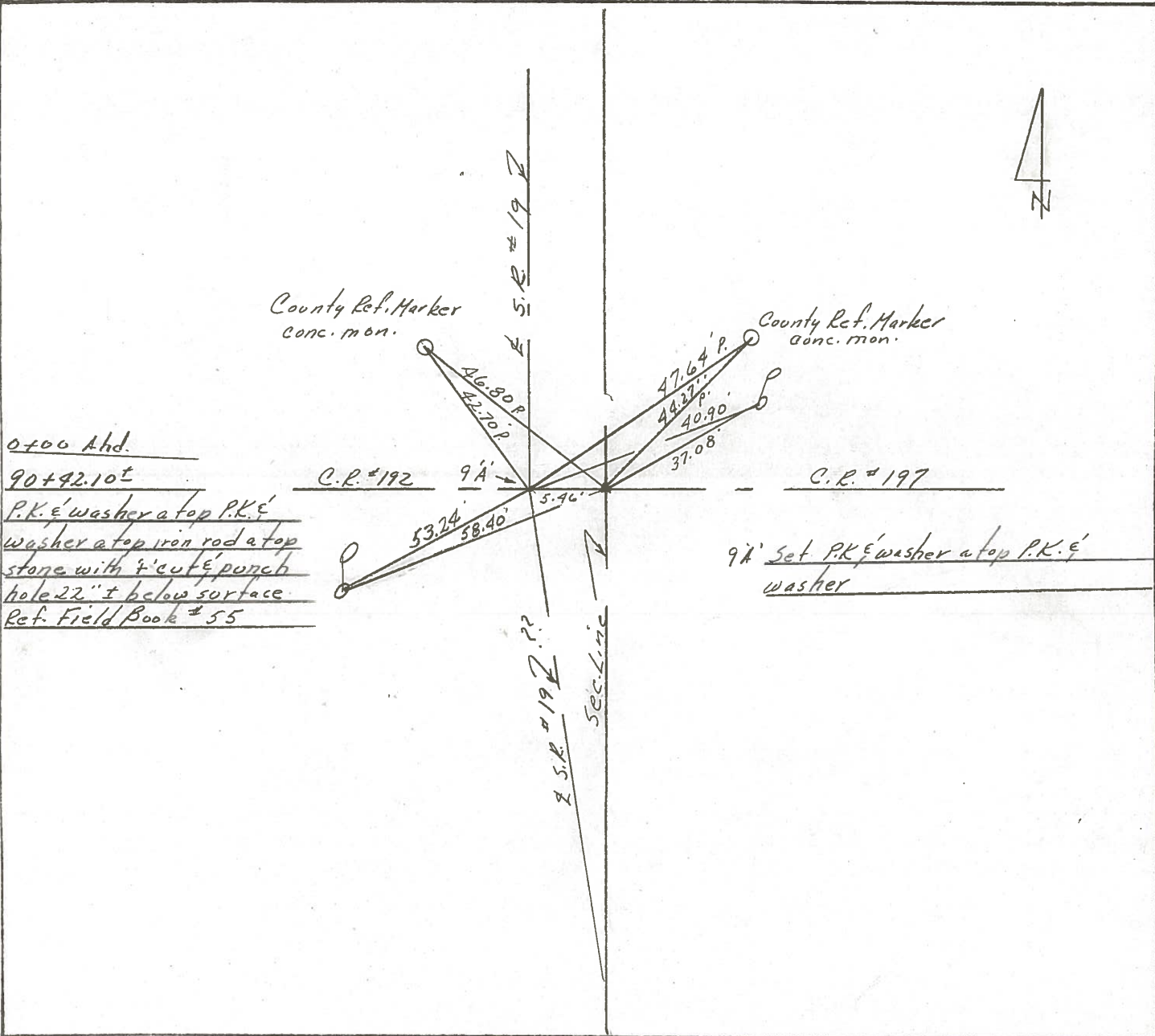
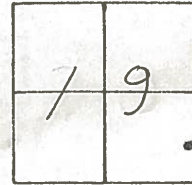
DRAWN 9/29/86
 DATE 9/25/86
 WEATHER sunny
 TEMP. 87°

SHEET 9 OF 31

ROUTE #19
 COUNTY Sandusky
 TOWNSHIP GREEN CREEK
 SECTION 19
T 4 N R 16 E

TYPE MONUMENT P.K. & washer
 ON SURFACE - BELOW on surface
 LEFT - € PAV'T. - RIGHT 5.5 ± Rt. & Pavt.
TO EDGE PAVEMENT
 S.L.M. _____

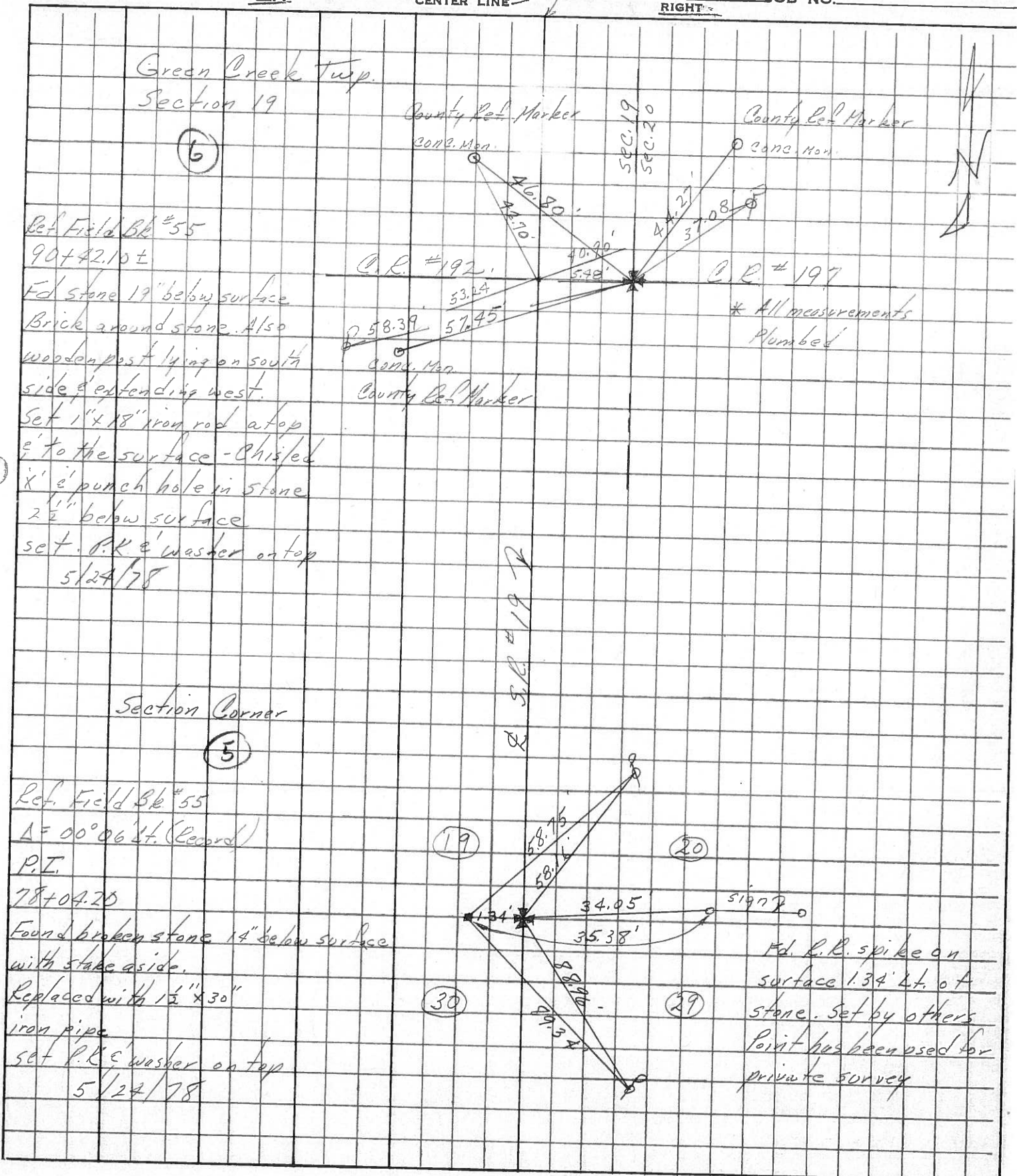
6



PERSONNEL TITLE PERSONNEL TITLE
 Cronin _____ Schneider _____
 Pippie _____ Mosser _____
 Geyman _____ Barbour _____

COUNTY Sandusky DATE 4/20/77
 S. R. #19 (I.C.H. 515) WEATHER sunny
 SEC. B TEMP. 72°

DESCRIPTION Ties for Control Points
 LEFT CENTER LINE RIGHT JOB NO.



Green Creek Twp.
 Section 19

(6)

Ref. Field Bk #55
 90+42.10 ±
 Fd stone 19" below surface
 Brick ground stone. Also
 wooden post lying on south
 side & extending west.
 Set 1" x 18" iron rod atop
 & to the surface - Chisel
 & punch hole in stone
 2 1/2" below surface
 set P.R. & washer on top
 5/24/78

Section Corner

(5)

Ref. Field Bk #55
 Δ = 00° 06' 41" (Record)
 P.I.
 78+04.20
 Found broken stone 14" below surface
 with stake aside.
 Replaced with 1 1/2" x 30"
 iron pipe
 set P.R. & washer on top
 5/24/78

(19)

(20)

(30)

(29)

sign

Fd. R.R. spike on
 surface 1.34' Lt. of
 stone. Set by others
 Point has been used for
 private survey

PERSONNEL	TITLE	PERSONNEL	TITLE	COUNTY	DATE
Schneider				Sandusky	Jan. 1968
Mosser				S. R. 19	WEATHER
Barbour				SEC. Seneca Co. Line North	TEMP.

DESCRIPTION Ties for Control Points JOB NO. _____

