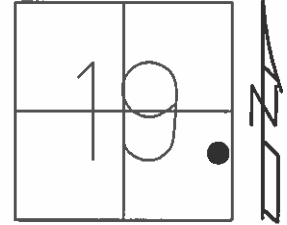


O.D.O.T. DISTRICT 2 SURVEY OFFICE (USE ONLY)

PERSONNEL \_\_\_\_\_ REFERENCE NO. 6 A SHEET 13 OF 33

NOTES ROUSOS DATE 04-10-02 ROUTE SR 19  
 H.C. HOMAN WEATHER SUNNY COUNTY SANDUSKY  
 R.C. ROUSOS TEMP. 50°F TOWNSHIP GREEN CREEK  
 \_\_\_\_\_ SECTION 19  
 \_\_\_\_\_ T 4 N R 16 E

TYPE MONUMENT PK/WASHER  
 ON SURFACE - ~~BELOW~~ ON \_\_\_\_\_  
 LEFT - ☉ PAV'T - ~~RIGHT~~ \_\_\_\_\_ 1'  
 - TO - EDGE PAVEMENT  
 S.L.M. 126+23



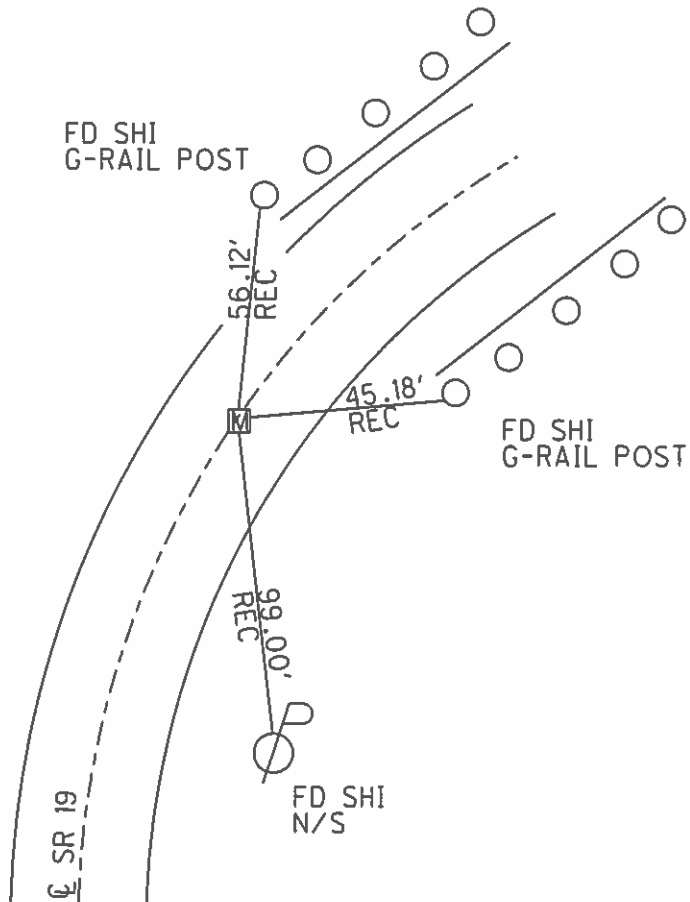
Grid: Northing: 592378.3454 Easting: 1816755.5695

RECORD:  
 PC 9+92.50  
 PK/WASHER  
 ATOP PK/WASHER  
 REF FIELD BOOK #55  
 SEE NOTE ON SHEET #15  
 REF #7-C, 1986

FD PK NAIL  
 SET BY  
 CONTRACTOR  
 9-17-02, DCH

FD MON BOX  
 GPS, REFA6  
 4-15-16, JFO

FND MONBOX  
 9-2-16



O.D.O.T. DISTRICT 2 SURVEY OFFICE

PERSONNEL

REFERENCE NO. 6A

SHEET 10 OF 31

NOTES Rousos

DATE 04-10-02

ROUTE SR 19

H.C. Homan

WEATHER Sunny

COUNTY Sandusky

R.C. Rousos

TEMP. 50°

TOWNSHIP Green Crk

SECTION 19

T4 N R16 E

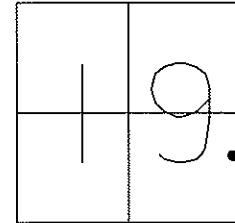
TYPE MONUMENT PK/Washer

~~ON SURFACE - BELOW~~ On Surface

~~LEFT - C PAV'T - RIGHT~~ 1' LT

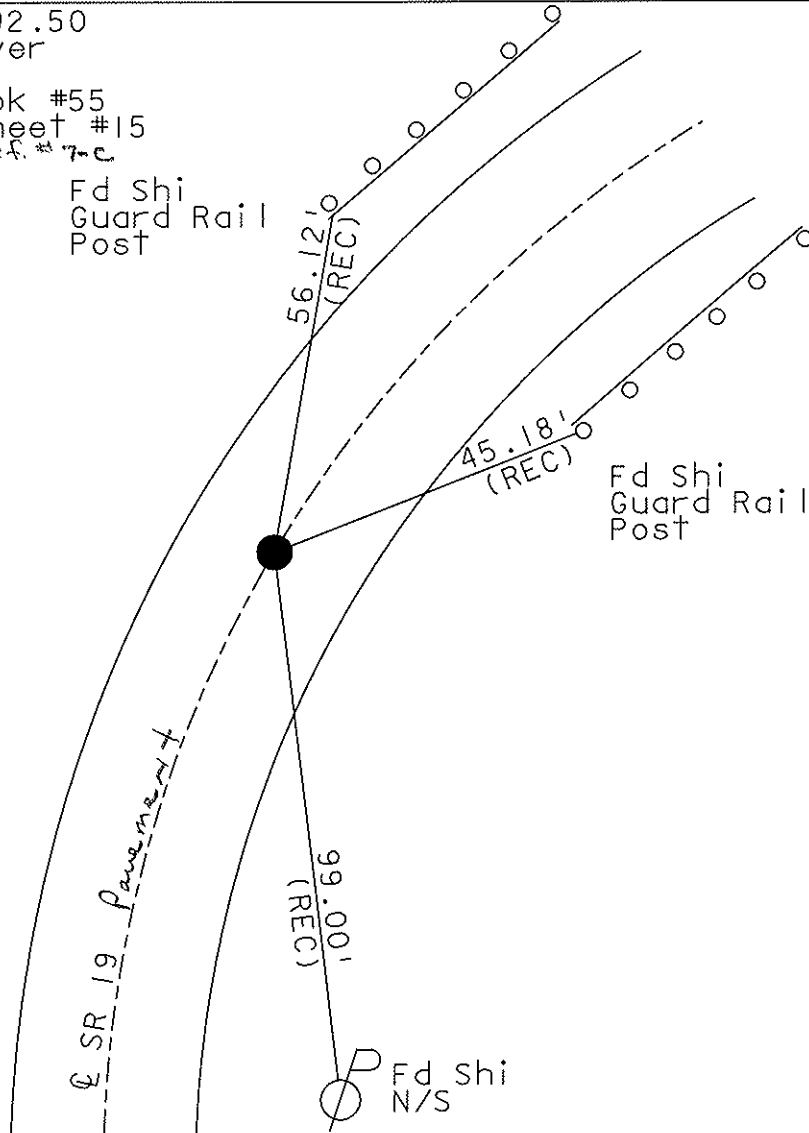
TO EDGE PAVEMENT

S.L.M. 126+23



Record: PC 9+92.50  
 PK & Washer over  
 PK & Washer  
 Ref. Field Book #55  
 See Note on Sheet #15  
 (1986) Ref. # 7c

Fd P.K. Nail  
 Set By  
 Contractor  
 9-17-02  
 DCH



O.D.O.T. DISTRICT 2 SURVEY OFFICE

PERSONNEL

REFERENCE NO. 6A

SHEET 10 OF 31

NOTES Cronin

DRAWN 9/29/86

H.C. Ripple

DATE 9/25/86

R.C. Geymen

WEATHER sunny

Barbour

TEMP. 87°

ROUTE #19

COUNTY Sandusky

TOWNSHIP GREEN CREEK

SECTION 19

T4 N R 16 E

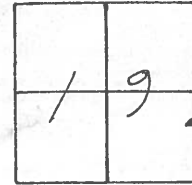
TYPE MONUMENT P.K. & Washer

ON SURFACE - BELOW on surface

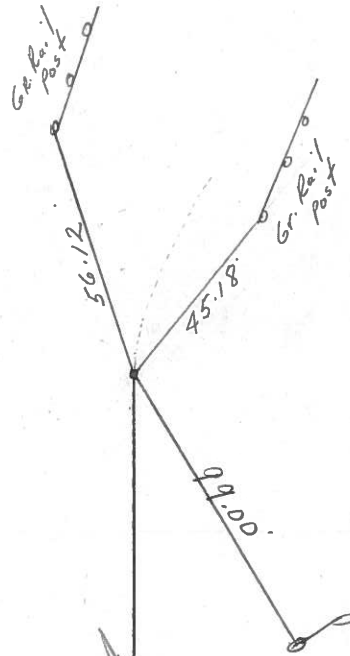
LEFT- & PAV'T. - RIGHT 1 Lt. & Pav't.

TO \_\_\_\_\_ EDGE PAVEMENT

S.L.M. \_\_\_\_\_



P.C.  
9+92.50  
P.K. & washer at top P.K.  
& washer 2" below surface  
Ref. Field Book #55  
See note on Sheet #15



5+92.50

O.D.O.T. DISTRICT 2 SURVEY OFFICE

Sht. 8 of 27

State Route #19

County Sandusky

Township Green Creek

Section 19

T 4 N, R 16 E

Personnel Cronin Schneider

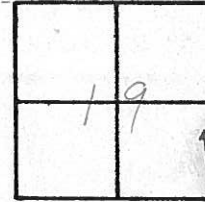
Ripple Barbour

Geyman

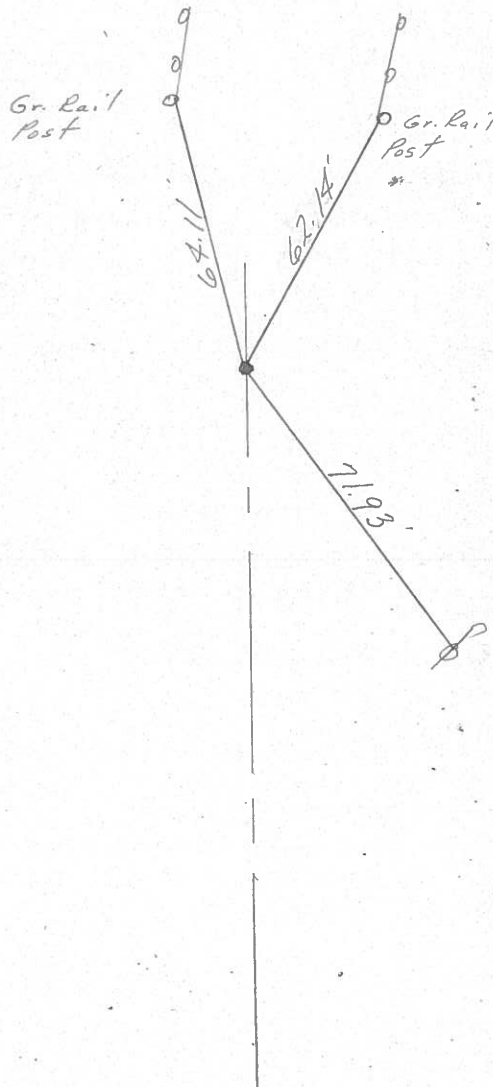
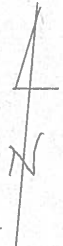
Date 8/29/77

Weather cloudy

Temp. 72°



6-A



P.C. Field Bk #55  
9+92.50  
Set P.K. Nail & Washer  
6/1/78 - Set from Fd. Bk. Data  
Retied