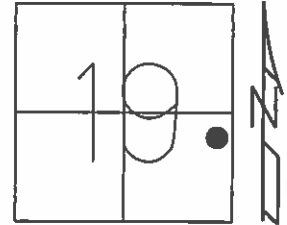


O.D.O.T. DISTRICT 2 SURVEY OFFICE (USE ONLY)

PERSONNEL _____ REFERENCE NO. 6 B SHEET 14 OF 33

NOTES ROUSOS DATE 04-10-02 ROUTE SR 19
 H.C. HOMAN WEATHER SUNNY COUNTY SANDUSKY
 R.C. ROUSOS TEMP. 50°F TOWNSHIP GREEN CREEK
 SECTION 19
 T 4 N R 16 E

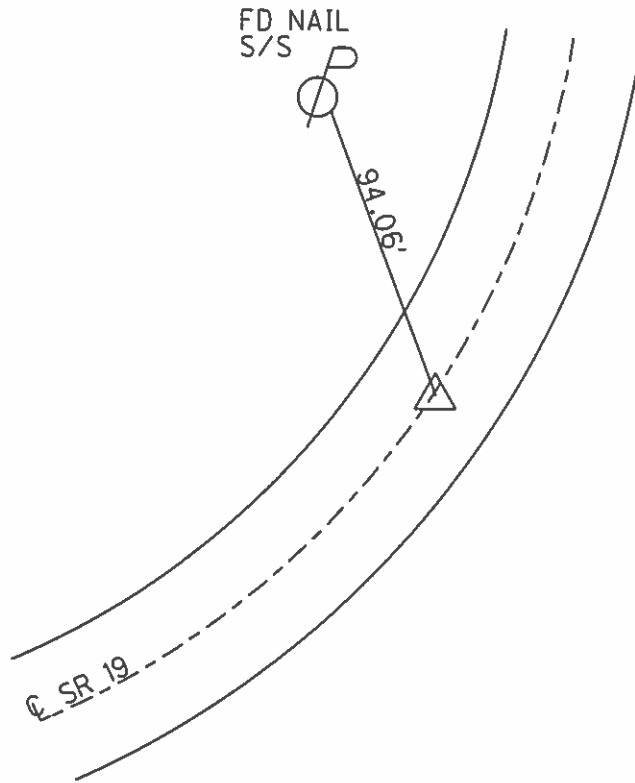
TYPE MONUMENT PK/WASHER
 ON SURFACE - ~~BELOW~~ ON
 LEFT - ☉ PAV'T - ~~RIGHT~~ 2'
- TO - EDGE PAVEMENT
 S.L.M. 127+66
 Grid: Northing: - _____ Easting: - _____



RECORD:
 MC 11+35.28
 PK/WASHER
 ATOP PK/WASHER
 REF. FIELD BOOK #55
 SEE NOTE ON SHEET #15
 REF #7-C
 1986

SET MAG NAIL
 09-17-02, DCH

DNF
 NEW CULVERT
 4-15-16



O.D.O.T. DISTRICT 2 SURVEY OFFICE

PERSONNEL

REFERENCE NO. 6-B

SHEET 11 OF 31

NOTES Rousos

DATE 04-10-02

ROUTE SR 19

H.C. Homan

WEATHER Sunny

COUNTY Sandusky

R.C. Rousos

TEMP. 50°

TOWNSHIP Green Crk

SECTION 19

T4 N R16 E

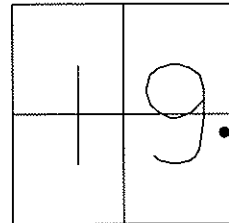
TYPE MONUMENT PK/Washer

ON SURFACE - ~~BELOW~~ On Surface

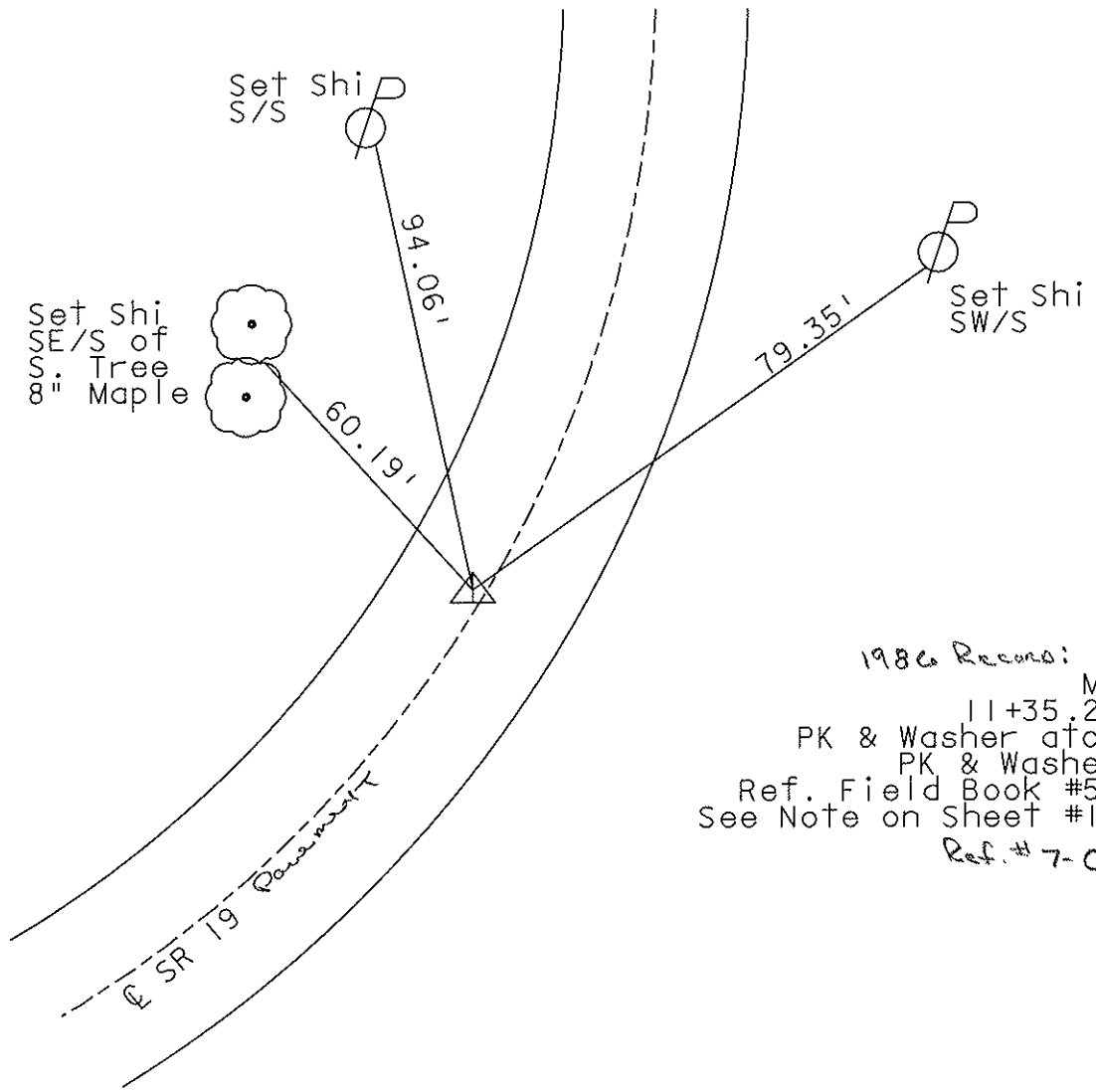
LEFT - ~~C~~ PAVT - ~~RIGHT~~ 2' LT

TO EDGE PAVEMENT

S.L.M. 127+66



Set Mag Nail
09-17-02
DCH



1986 Recons:
MC
11+35.28
PK & Washer atop
PK & Washer
Ref. Field Book #55
See Note on Sheet #15
Ref. # 7-C

O.D.O.T. DISTRICT 2 SURVEY OFFICE

PERSONNEL

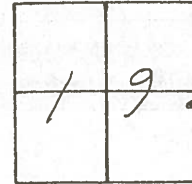
NOTES Cronin
 H.C. Ripple
 R.C. Geyman
Barbour

REFERENCE NO. 6.B
 DRAW 9/29/86
 DATE 9/25/86
 WEATHER sunny
 TEMP. 87°

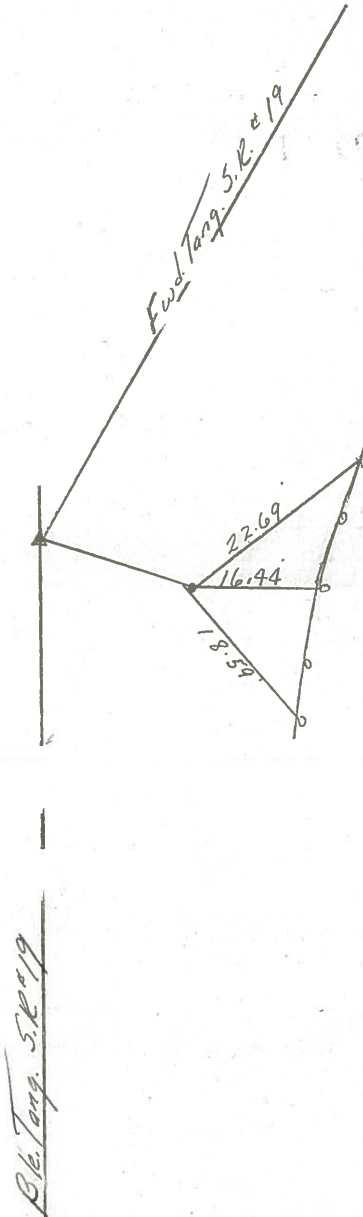
SHEET 11 OF 31

ROUTE 19
 COUNTY Sandusky
 TOWNSHIP GREEN CREEK
 SECTION 19
 T. 4 N R. 16 E

TYPE MONUMENT P.K. & washer
 ON SURFACE - BELOW on surface
 LEFT- & PAV'T. - RIGHT & Pavt.
 TO _____ EDGE PAVEMENT
 S.L.M. _____



H.C.
11+35.28
P.K. & washer at top P.K.
& washer 2" below
surface - Ref Field Bk #55
See note on Sheet #15



OD.O.T. DISTRICT 2 SURVEY OFFICE

Sht. 9 of 27

State Route #19

County Sandusky

Township Green Creek

Section _____

T4N, R16E

Personnel Cronin Schneider

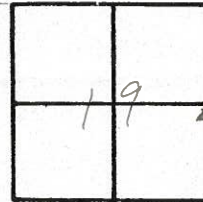
Ripple Barbour

Geyman

Date 8/29/77

Weather Cloudy

Temp. 72°



6-B



MC. Field Bk. #35

11+35.28

Set P.K. Nail & washer

from Fd. Bk. Data. Retied

6/1/78

