

O.D.O.T. DISTRICT 2 SURVEY OFFICE (USE ONLY)

PERSONNEL \_\_\_\_\_ REFERENCE NO. 7 B SHEET 17 OF 33

NOTES RHOADES DATE 4-15-16 ROUTE SR 19  
H.C. O'DONNELL WEATHER SUNNY COUNTY SANDUSKY  
R.C. RHOADES TEMP. 50°F TOWNSHIP GREEN CREEK  
SECTION 20  
T 4 N R 16 E

TYPE MONUMENT MAG/WASHER

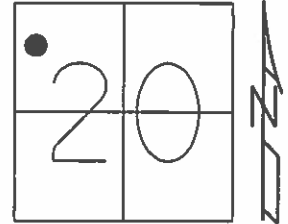
ON SURFACE - ~~BELOW~~ ON

~~LEFT~~ Q PAV'T - RIGHT 8.5'

- TO - EDGE PAVEMENT

S.L.M. 136+95

Grid: Northing: 593323.0123 Easting: 1817111.9249

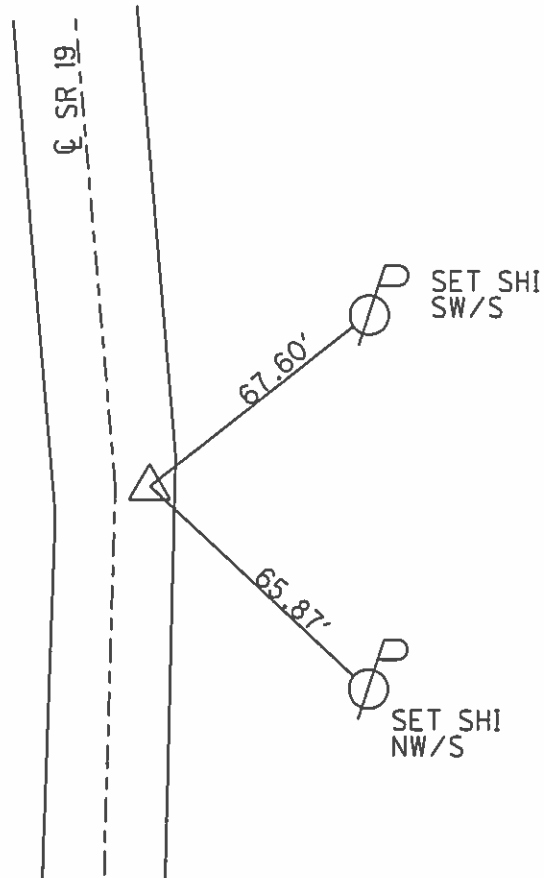


RECORD:  
 $\Delta=17^{\circ}27'00''$  LT R&M  
PI 20+64.35  
REF FIELD BOOK #55  
SEE NOTE ON SHEET #15  
REF. #7-C  
1986

SET MAG/WASHER  
9-17-02, DCH

FD MAG/WASHER  
GPS, REFB7  
4-15-16, JFO

POINT  
UNCOVERED  
9-2-16



O.D.O.T. DISTRICT 2 SURVEY OFFICE

PERSONNEL

REFERENCE NO. 7-B

SHEET 14 OF 31

NOTES Rousos

DATE 04-20-02

ROUTE SR 19

H.C. Homan

WEATHER Sunny

COUNTY Sandusky

R.C. Rousos

TEMP. 50°

TOWNSHIP Green Crk

SECTION 20

T4 N R16 E

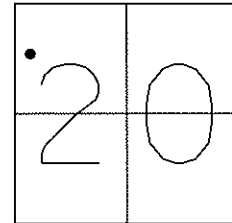
TYPE MONUMENT PK/Washer

ON SURFACE - BELOW On Surface

~~LEFT~~ - Q PAV'T - RIGHT 8.5' RT

TO EDGE PAVEMENT

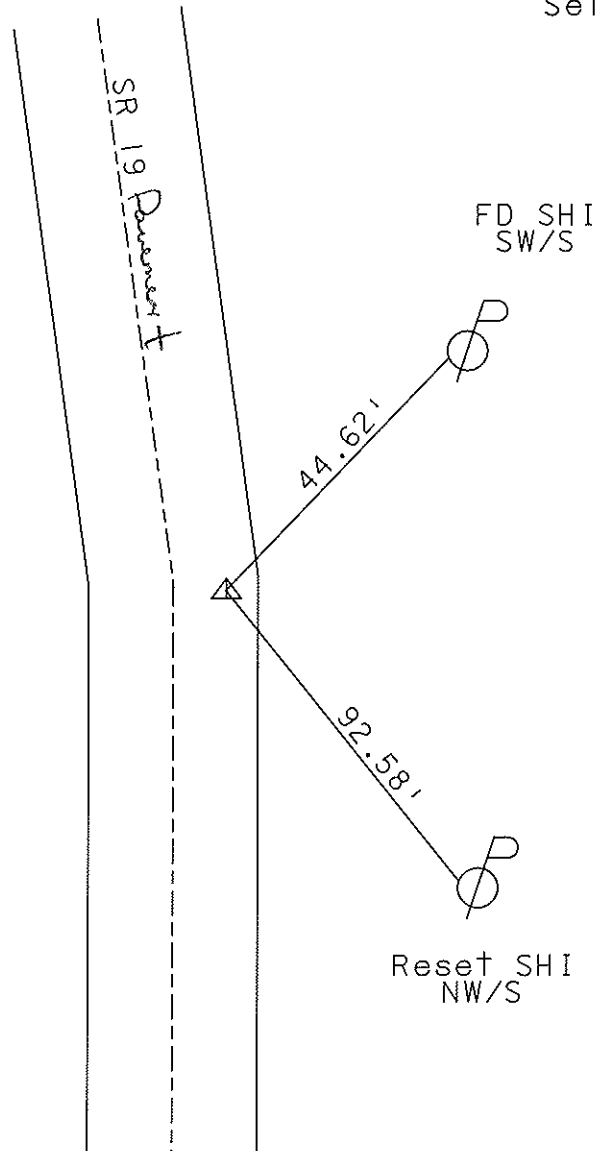
S.L.M. 136+95



Record: (1986)

$\Delta = 17^{\circ}27'00''$  LT R&M  
 PI 20+64.35  
 Ref Field Book #55  
 See Note on Sheet #15  
 Ref. # 7-C

Set Mag Nail  
 & Washer  
 9-17-02  
 DCH



# O.D.O.T. DISTRICT 2 SURVEY OFFICE

PERSONNEL

NOTES Cronin  
 H.C. Ripple  
 R.C. Geyman  
Barbour

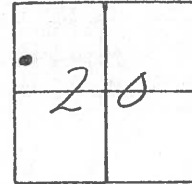
REFERENCE NO. 74B

DRAWN 9/29/86  
 DATE 9/25/86  
 WEATHER sunny-windy  
 TEMP. 90°

SHEET 14 OF 31

ROUTE #19  
 COUNTY Sandusky  
 TOWNSHIP GREEN CREEK  
 SECTION 20  
 T. N R. 16 E

TYPE MONUMENT P.R. & washer  
 ON SURFACE - BELOW on surface  
 LEFT- & PAW'T. - RIGHT 8.5' Rt. & Post.  
 TO EDGE PAVEMENT  
 S.L.M. \_\_\_\_\_



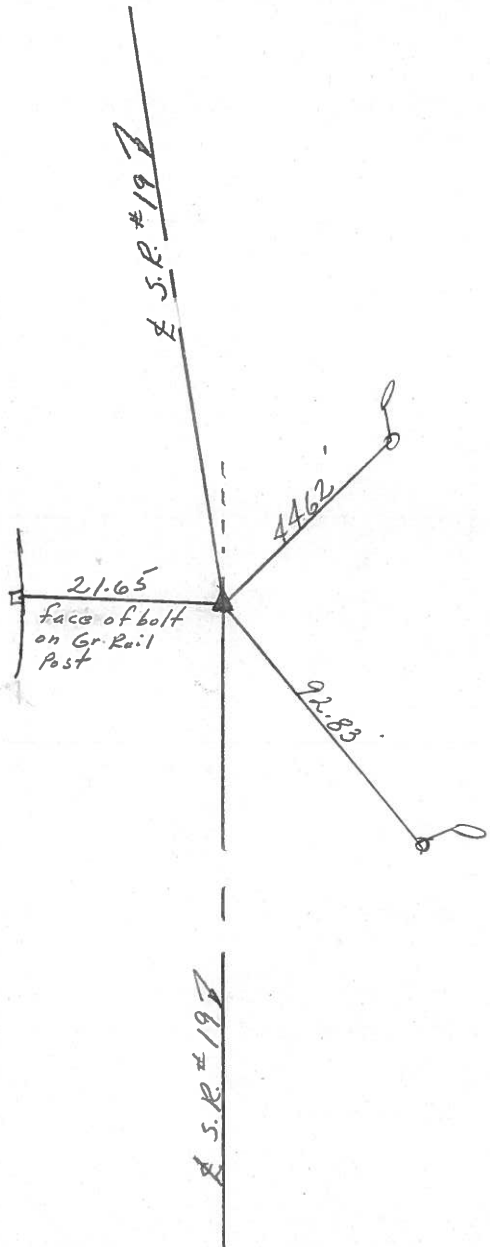
$\Delta = 17^{\circ} 27' 00''$  Lt. R. & M.

P.I.

20+64.35

Ref Field Book #55

see note on Sheet #15

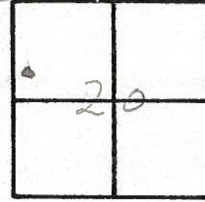


O.D.O.T. DISTRICT 2 SURVEY OFFICE

Sht. 12 of 27

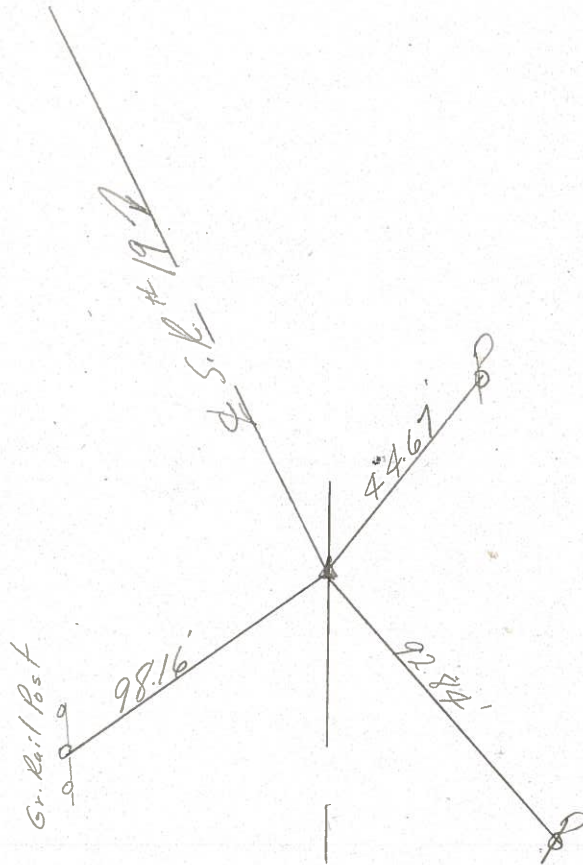
State Route # 19  
 County Sandusky  
 Township Green Creek  
 Section 20  
 T 4 N, R 16 E  
 Personnel Cronin Schneider  
Ripple Barbour  
Geyman

Date 8/30/77  
 Weather \_\_\_\_\_  
 Temp. \_\_\_\_\_



7-B

$\Delta = 17^{\circ}27'00''$  Lt. Rec. & Meas  
 P.I. Field Bk #55  
 20 + 64.35  
 Set P.K. Nail & Washer  
 from fieldbook data  
 1.5' Lt. of Rt. edge  
 of pavement



S.R. #19