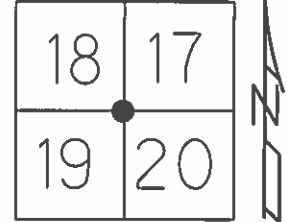


O.D.O.T. DISTRICT 2 SURVEY OFFICE (USE ONLY)

PERSONNEL _____ REFERENCE NO. 8 SHEET 19 OF 33
 NOTES RHOADES DATE 4-25-16 ROUTE SR 19
 H.C. O'DONNELL WEATHER CLOUDY COUNTY SANDUSKY
 R.C. RHOADES TEMP. 62°F TOWNSHIP GREEN CREEK
 _____ SECTION 17 18 19 20
 _____ T 4 N R 16 E

TYPE MONUMENT PK/WASHER
~~ON SURFACE~~ - BELOW 3.5"
 LEFT - ☉ PAV'T - ~~RIGHT~~ 1.3'
 - TO - EDGE PAVEMENT
 S.L.M. 157+44



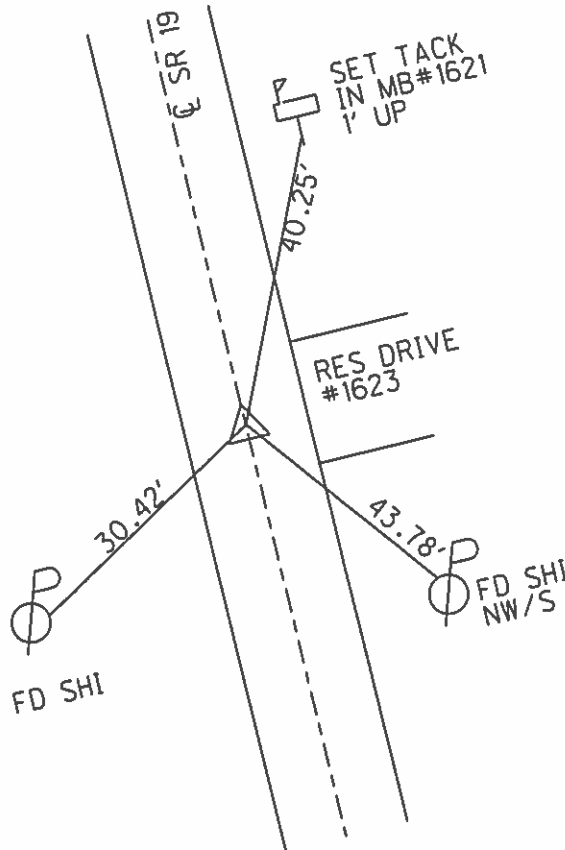
Grid: Northing: 595364.7286 Easting: 1816860.1145

RECORD:
 $\Delta=02^{\circ}26'00''$ RT REC.
 PI 41+21.90
 PK/WASHER
 ATOP PK/WASHER
 ATOP RR. SPK
 REF. FIELD BOOK #55

SET MAG/WASHER
 09-17-02, DCH

FD PK/WASHER
 3.5" DOWN
 GPS, REF8
 4-25-16

FND PK/WASHER
 9-2-16



O.D.O.T. DISTRICT 2 SURVEY OFFICE

PERSONNEL

REFERENCE NO. 8

SHEET 16 OF 31

NOTES Rousos

DATE 04-10-02

ROUTE SR 19

H.C. Homan

WEATHER Sunny

COUNTY Sandusky

R.C. Rousos

TEMP. 50°

TOWNSHIP Green Crk

SECTION 20

T 4 N R 16 E

TYPE MONUMENT PK & Washer

ON SURFACE - ~~BELOW~~ on surface

LEFT - ~~C PAVT~~ - RIGHT 1.3'

TO EDGE PAVEMENT

S.L.M. 157+44 +/-

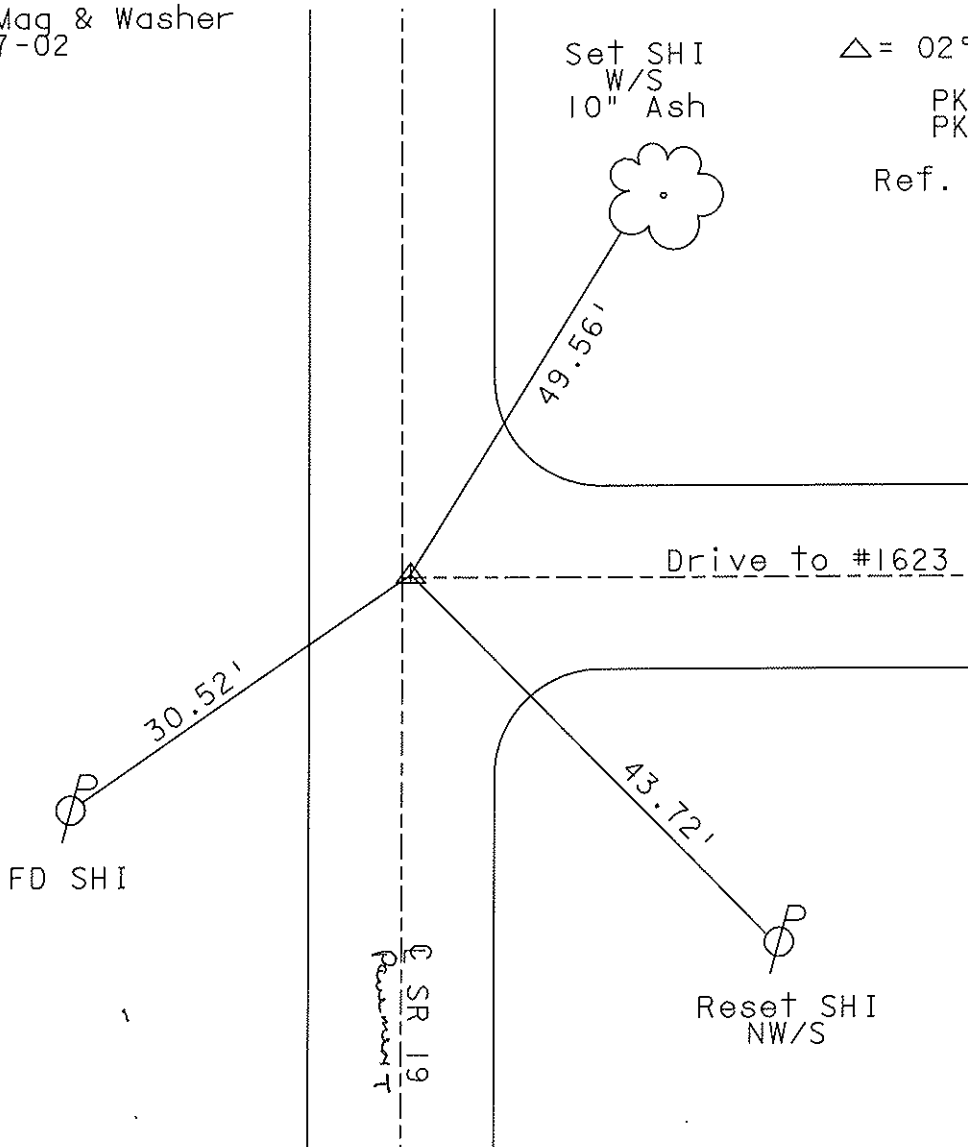
18	17
19	20



Set Mag & Washer
09-17-02
DCH

Set SHI
W/S
10" Ash

(1986) Record:
 $\Delta = 02^{\circ}26'00''$ RT Rec.
PI 41+12.90
PK & Washer atop
PK & Washer atop
RR Spk
Ref. Field Book #55



O.D.O.T. DISTRICT 2 SURVEY OFFICE

PERSONNEL

NOTES Cronin
 H.C. Ripple
 R.C. Geyman
Barbour

REFERENCE NO. 8

Drawn 10/01/86
 DATE 9/25/86
 WEATHER sunny-windy
 TEMP. 87°

SHEET 16 OF 31

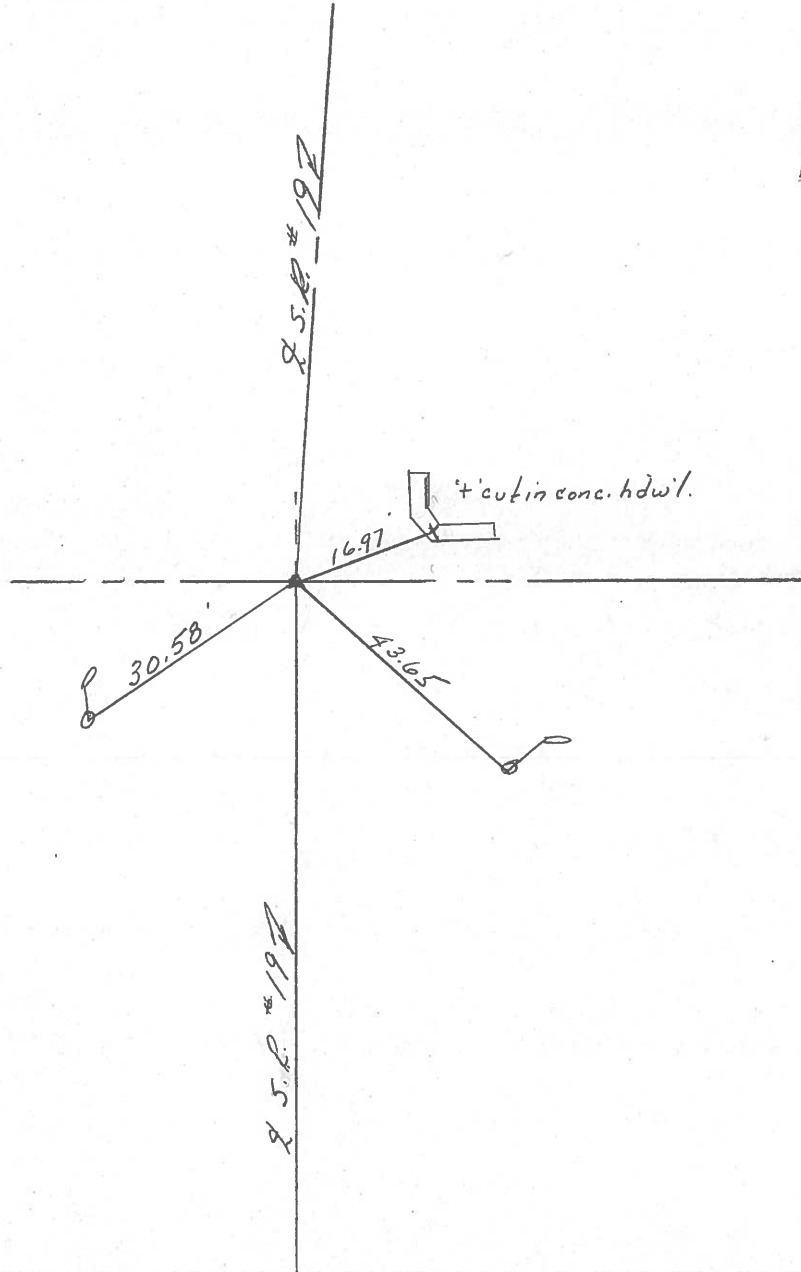
ROUTE #19
 COUNTY Sandusky
 TOWNSHIP GREEN CREEK
 SECTION 17, 18, 19, & 20
 T 4 N R 16 E

TYPE MONUMENT P.K. Washer
 ON SURFACE - BELOW on surface
 LEFT- & PAV'T. - RIGHT 4.3' W. & Pav't
 TO _____ EDGE PAVEMENT
 S.L.M. _____

18	17
19	20



Δ = 02°26'00" Pt. Rec.
P.I.
41+12.90
P.K. Washer at top P.K. Washer
at top R.R. spike
6" ± below surface
Ref. Field Book #55



O.D.O.T. DISTRICT 2 SURVEY OFFICE

PERSONNEL

REFERENCE NO. 8

SHEET 14 OF 27

NOTES CRONIN
 H.C. RIPPLE
 R.C. BARBOUR
GEYMAN

DATE 8/16/85
 WEATHER SUNNY
 TEMP. 80°

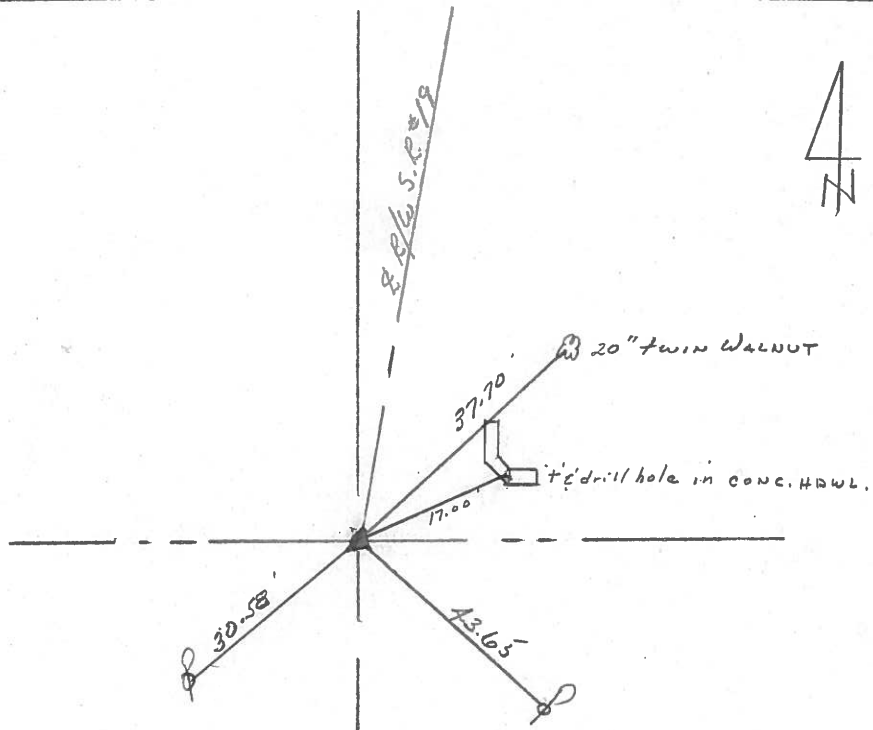
ROUTE #19
 COUNTY SANDUSKY
 TOWNSHIP GREEN CREEK
 SECTION 17, 18, 19 & 20
T4 N R 16 E

TYPE MONUMENT P.K. WASHER ATOP R.R. SPIKE
 ON SURFACE - BELOW ON SURFACE
 LEFT - Q PAV'T. - RIGHT 3' LT. & PAVMT
 TO EDGE PAVEMENT
 S.L.M. _____

18	17
19	20

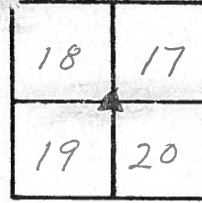


P.I. Δ = 02° 06' 00" Rt. Rec.
41+12.90 (157+22.83)
Ref. Field Bk # 55



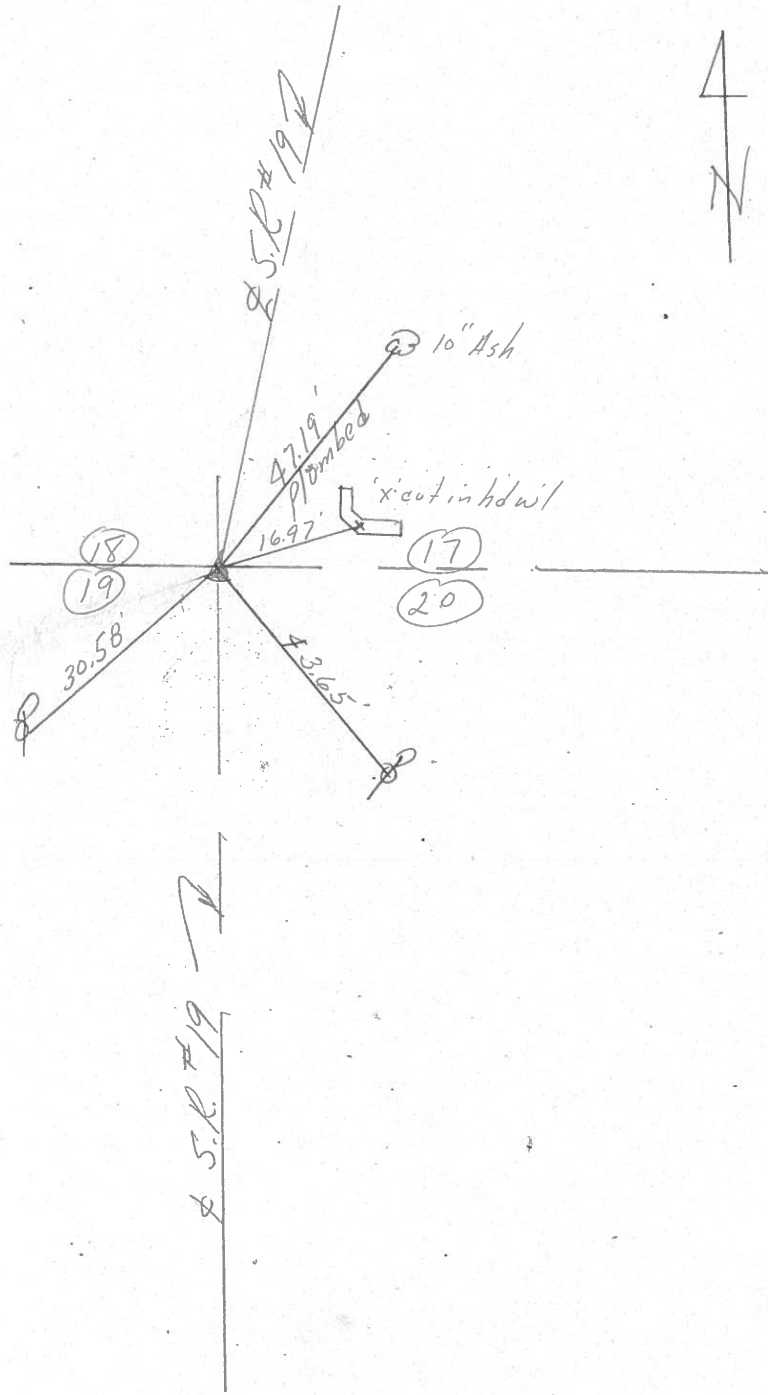
State Route #19
 County Sandusky
 Township Green Creek
 Section Corner 17, 18, 19, 20
 T4N, R16E
 Personnel Cronin Schneider
 Ripple Barbour
 Geyman

Date 6/1/78
 Weather
 Temp.



(8)

A = 02°26'00" Rt. Rec.
 P.I. Field Bk #55
 41+12.90
 Ed. R. spike 4" t below
 surface. Set P.K. Nail
 2" washer atop and to the
 surface 6/1/78
 1.3 Lt. of 2 Pavement



S.R. #19

PERSONNEL	TITLE	PERSONNEL	TITLE
Schneider			
Mosser			
Barbour			

COUNTY Sandusky DATE Jan. 9

S. R. 19 WEATHER

SEC. N TEMP.

DESCRIPTION Ties for Control

LEFT CENTER LINE RIGHT JOB NO.

