

O.D.O.T. DISTRICT 2 SURVEY OFFICE (USE ONLY)

PERSONNEL _____ REFERENCE NO. 8 A SHEET 20 OF 33

NOTES RHOADES DATE 4-25-16 ROUTE SR 19
 H.C. O'DONNELL WEATHER CLOUDY COUNTY SANDUSKY
 R.C. RHOADES TEMP. 62°F TOWNSHIP GREEN CREEK
 _____ SECTION 18
 _____ T 4 N R 16 E

TYPE MONUMENT HARROW TOOTH

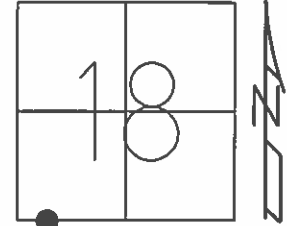
ON SURFACE - ~~BELOW~~ ON _____

~~LEFT~~ = ☉ PAV'T - RIGHT 13.6'

_____ TO _____ EDGE PAVEMENT

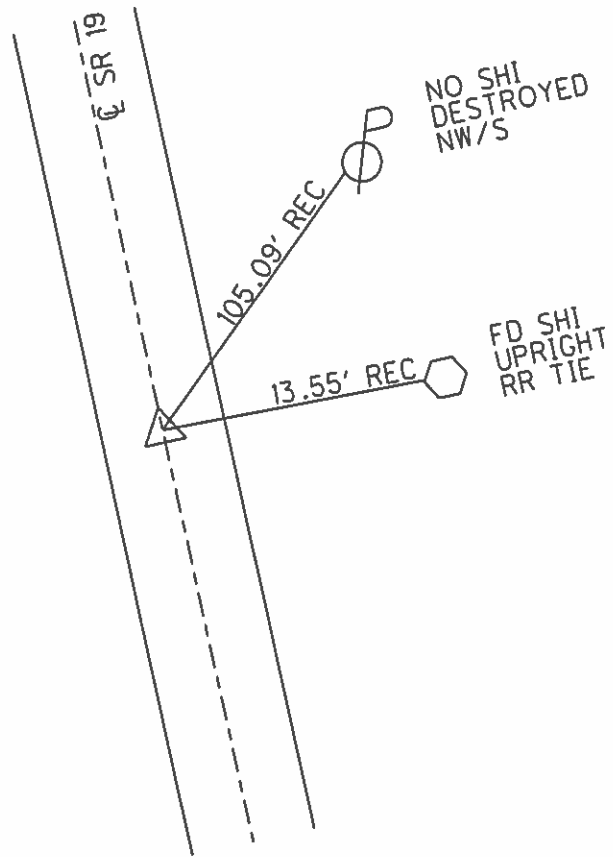
S.L.M. 172+24

Grid: Northing: _____ Easting: _____



RECORD:
 $\Delta=20^{\circ}32'00''$ LT REC.
 PI 55+93.45
 REF. FIELD BOOK #55
 1986

DID NOT FIND
 4-10-02
 4-25-16
 9-2-16



O.D.O.T. DISTRICT 2 SURVEY OFFICE

PERSONNEL

REFERENCE NO. B-A

SHEET 17 OF 31

NOTES Rousos

DATE 04-10-02

ROUTE SR 19

H.C. Homan

WEATHER Sunny

COUNTY Sandusky

R.C. Rousos

TEMP. 50°

TOWNSHIP Green Crk

SECTION 18

T 4 N R 16 E

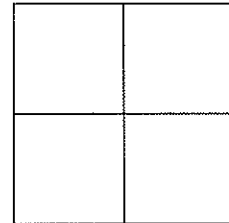
TYPE MONUMENT Harrow Tooth

ON SURFACE - BELOW on surface

~~LEFT - C PAVT - RIGHT~~ 13.6' RT C

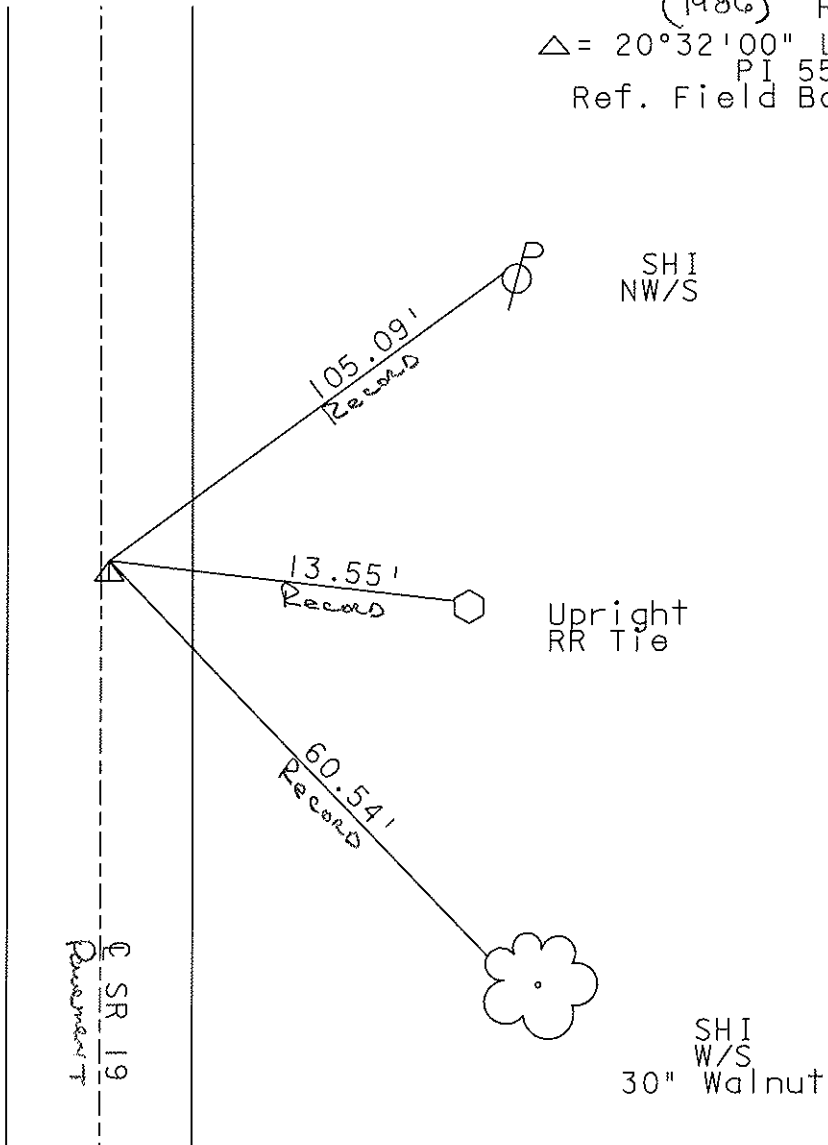
TO EDGE PAVEMENT

S.L.M. 172+24



Did Not Find

(1986) Record:
 $\Delta = 20^{\circ}32'00''$ Lt Rec.
 PI 55+93.45
 Ref. Field Book #55



O.D.O.T. DISTRICT 2 SURVEY OFFICE

PERSONNEL

NOTES Cronin
 H.C. Rippt
 R.C. Geyman
Barbour

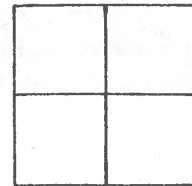
REFERENCE NO. 8A

DRAWN 10/01/86
 DATE 9/26/86
 WEATHER sunny
 TEMP. 78°

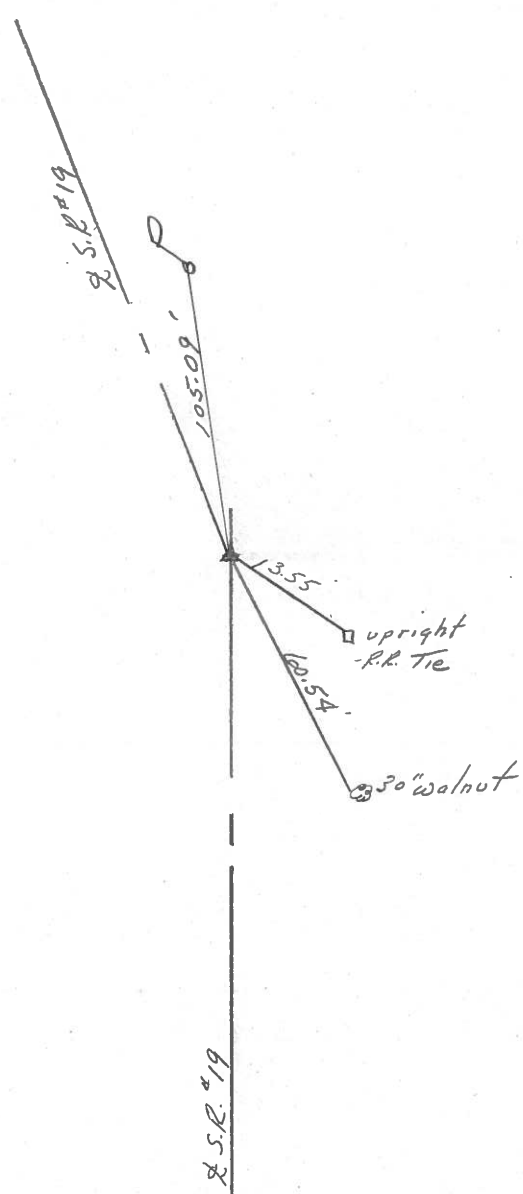
SHEET 17 OF 31

ROUTE #19
 COUNTY Sandusky
 TOWNSHIP GREEN CREEK
 SECTION _____
 T N R 16 E

TYPE MONUMENT Harrow Tooth
 ON SURFACE - BELOW below surface
 LEFT - & PAV'T. - RIGHT 13.6 ± Lt. & Pav't.
 TO _____ EDGE PAVEMENT
 S.L.M. _____



$\Delta = 20^\circ 32' 00''$ Lt. Rec.
P.T.
55 + 93.45
Reference Field Book
#55



O.D.O.T. DISTRICT 2 SURVEY OFFICE

PERSONNEL

NOTES CROWIN
 H.C. RIPPLE
 R.C. BARBOUR
GEYMAN

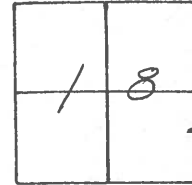
REFERENCE NO. B-A

SHEET 15 OF 27

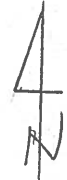
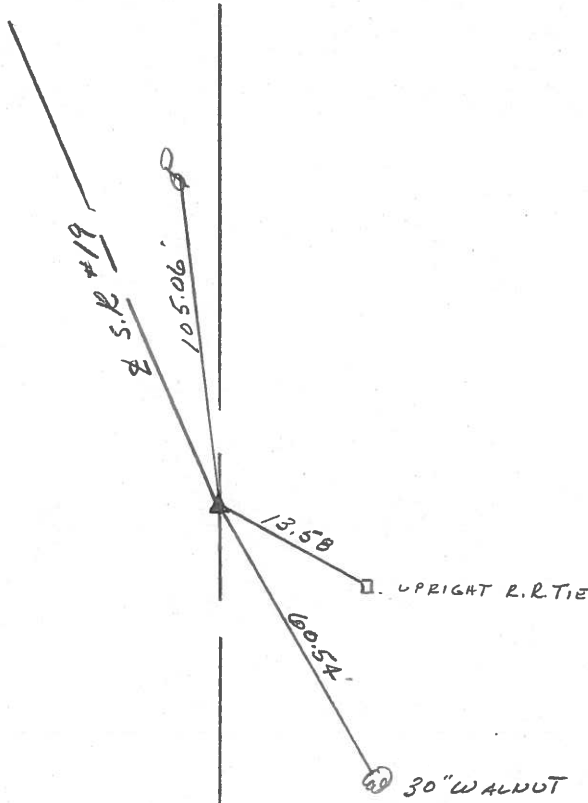
DATE 8/16/85
 WEATHER SUNNY
 TEMP. 80°

ROUTE 19
 COUNTY SANDUSKY
 TOWNSHIP GREEN CREEK
 SECTION 18
T 4 N R 16 E

TYPE MONUMENT HARROW TOOTH
 ON SURFACE - BELOW ON SURFACE
 LEFT - Q PAV'T. - RIGHT 13.7 RT & PAVMT.
2.6' TO LT. EDGE PAVEMENT
 S.L.M. _____



P.E. A = 20°32'00" Lt. Rec.
55+93.45
REF. FIELD BOOK # 55



O.D.O.T. DISTRICT 2 SURVEY OFFICE

Sht. 15 of 27

State Route #19

County Sandusky

Township Green Creek

Section 18

T4N, R16E

Personnel Cronin Schneider

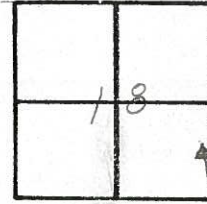
Ripple Barbour

Geyman

Date 6/1/78

Weather

Temp.



8.A (circled in red)



$\Delta = 20^{\circ} 32' 00''$ Lt. Rec.
P.I. Field Bk # 55
55+93.45
Ed. Harrow tooth
3.6' Rt. of Rt. edge
of Pavement

