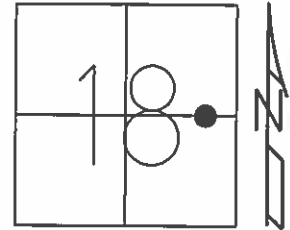


O.D.O.T. DISTRICT 2 SURVEY OFFICE (USE ONLY)

PERSONNEL _____ REFERENCE NO. 9 SHEET 21 OF 33

NOTES RHOADES DATE 4-25-16 ROUTE SR 19
 H.C. O'DONNELL WEATHER CLOUDY COUNTY SANDUSKY
 R.C. RHOADES TEMP. 62°F TOWNSHIP GREEN CREEK
 _____ SECTION 18
 _____ T 4 N R 16 E

TYPE MONUMENT MAG/WASHER
 ON SURFACE - ~~BELOW~~ ON _____
~~LEFT~~ - Q PAV'T - RIGHT 7.6'
 - TO - EDGE PAVEMENT
 S.L.M. 184+66



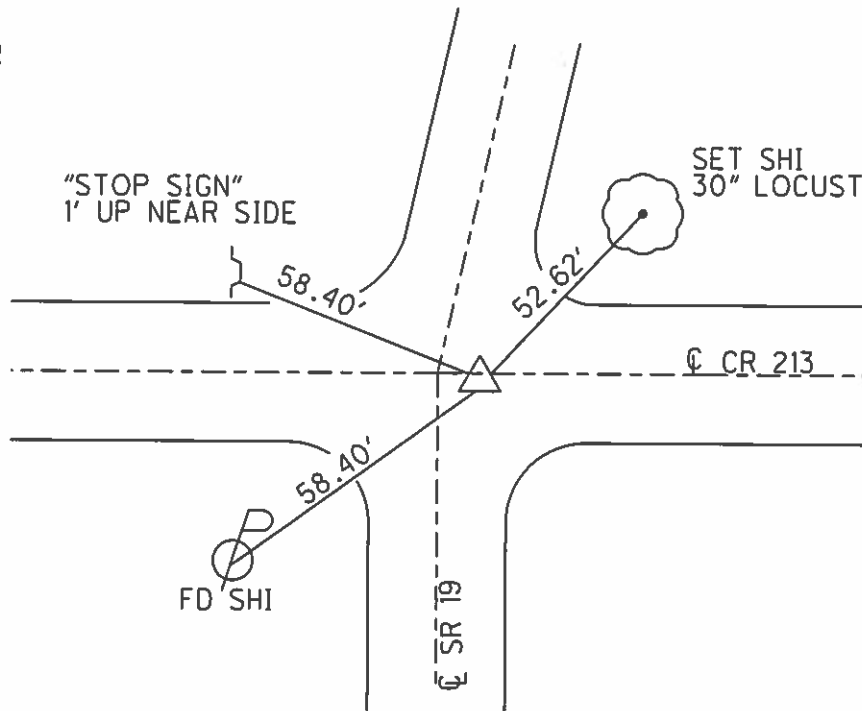
Grid: Northing: 598015.1698 Easting: 1816475.1767

RECORD:
 $\Delta=9^{\circ}41'00''$ RT REC.
 PI 68+35.35
 PK/WASHER
 ATOP RR SPK
 6" BELOW
 REF. FIELD BOOK #55
 1986

FD MAG/WASHER
 09-17-02, DCH

FD MAG/WASHER
 GPS, REF9
 4-25-16

UNCOVERED
 MAG/WASHER
 9-2-16



O.D.O.T. DISTRICT 2 SURVEY OFFICE

PERSONNEL

REFERENCE NO. 9

SHEET 18 OF 31

NOTES Rousos

DATE 04-10-02

ROUTE SR 19

H.C. Homan

WEATHER Sunny

COUNTY Sandusky

R.C. Rousos

TEMP. 50°

TOWNSHIP Green Crk

SECTION 18

T 4 N R 16 E

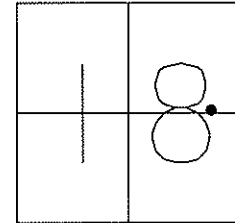
TYPE MONUMENT RR Spk

~~ON SURFACE - BELOW~~ 6"

~~LEFT - C PAV'T - RIGHT~~ 6.3'

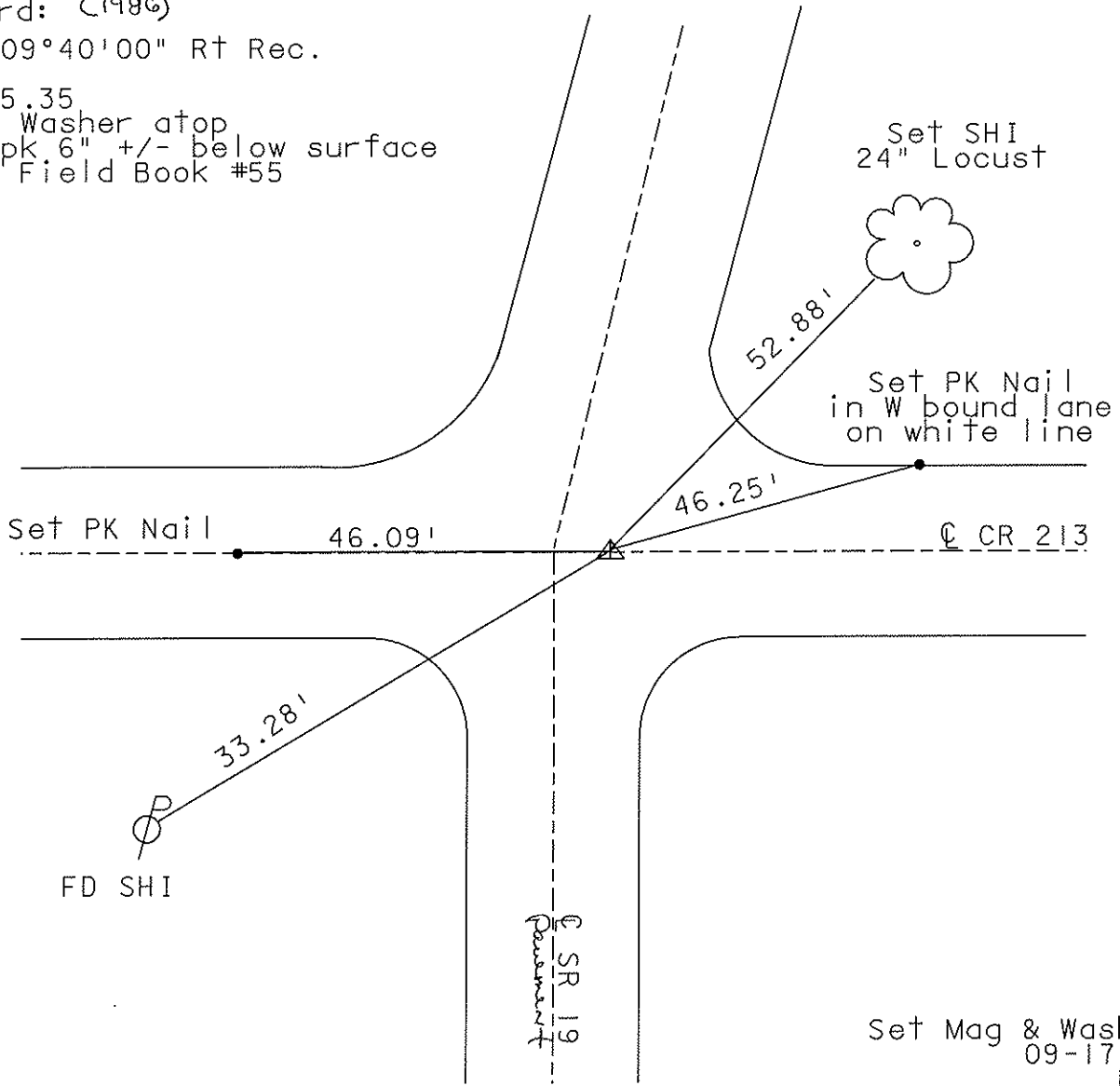
TO EDGE PAVEMENT

S.L.M. 184+66 +/-



Record: (1986)

△ = 09°40'00" Rt Rec.
 PI
 68+35.35
 PK & Washer atop
 RR Spk 6" +/- below surface
 Ref. Field Book #55



O.D.O.T. DISTRICT 2 SURVEY OFFICE

PERSONNEL

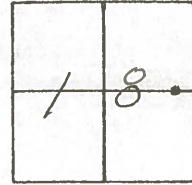
NOTES Cronin
 H.C. Ripple
 R.C. Geymen
Barbour

REFERENCE NO. 9
 DRAWN 10/01/86
 DATE 9/26/86
 WEATHER sunny
 TEMP. 78°

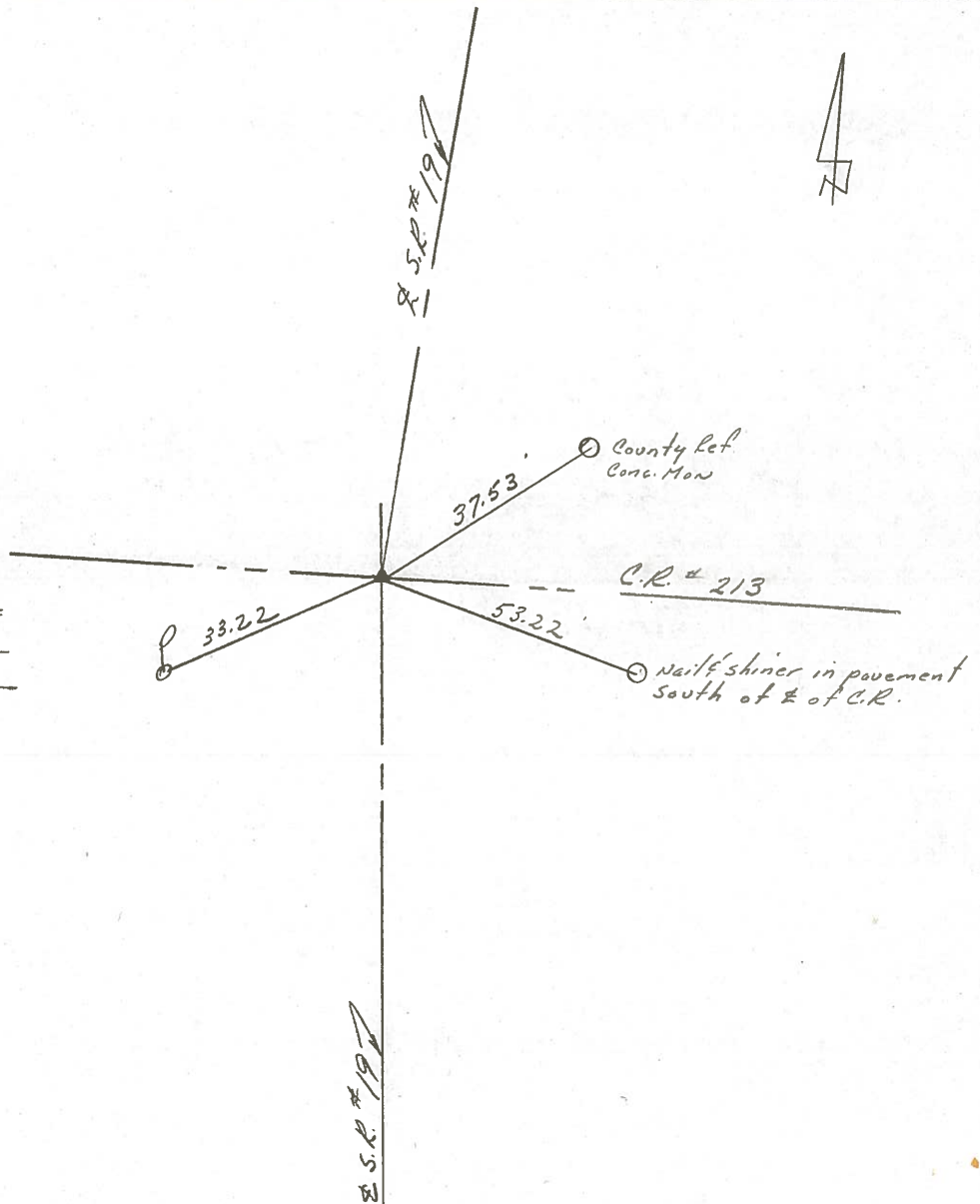
SHEET 18 OF 31

ROUTE #19
 COUNTY Sandusky
 TOWNSHIP GREEN CREEK
 SECTION _____
 T 7 N R 16 E

TYPE MONUMENT P.K. & washer
 ON SURFACE - BELOW on surface
 LEFT- & PAV'T. - RIGHT 6.3' Lt. & Pavt.
 _____ TO _____ EDGE PAVEMENT
 S.L.M. _____



$\Delta = 09^{\circ} 40' 00''$ - Pt. Rec.
P.I.
68 + 35.35
P.K. & washer at top R.L. spike
6" ± below surface. Ref.
Field Book #55



PERSONNEL	TITLE	PERSONNEL	TITLE	COUNTY	DATE
Cronin		Schneider		Sandusky	8/23/78
Ripple		Barbour		S. R. #19 (I.C.H. 515)	WEATHER sunny
Geyman				SEC. "C" Field Bk #55	TEMP. 85°

DESCRIPTION Ties for Control Points JOB NO. _____

