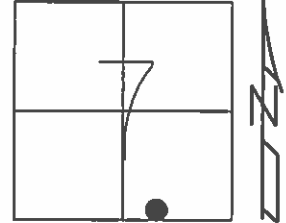


O.D.O.T. DISTRICT 2 SURVEY OFFICE (USE ONLY)

PERSONNEL _____ REFERENCE NO. 10 SHEET 25 OF 33
NOTES RHOADES DATE 4-25-16 ROUTE SR 19
H.C. O'DONNELL WEATHER CLOUDY COUNTY SANDUSKY
R.C. RHOADES TEMP. 78°F TOWNSHIP GREEN CREEK
SECTION 7
T 4 N R 16 E

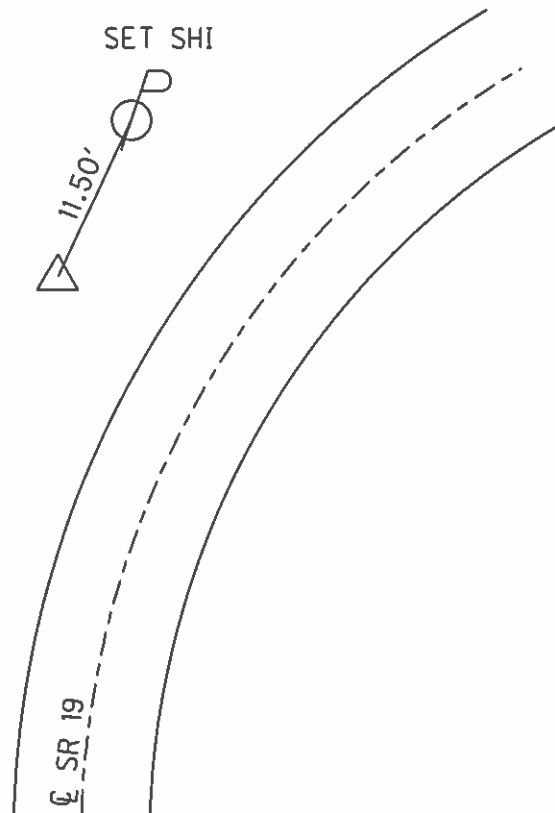
TYPE MONUMENT 1" IPIN
~~ON SURFACE~~ - BELOW 2"
LEFT - ☉ PAV'T - ~~RIGHT~~ 31.5'
- TO - EDGE PAVEMENT
S.L.M. 218+19
Grid: Northing: 601058.888 Easting: 181517.9648



RECORD:
 $\Delta=45^{\circ}19'40''$ RT MEAS
 $\Delta=45^{\circ}20'00''$ RT REC.
PI 101+87.95
SET FROM FIELD BOOK DATA
REF. FEILD BOOK #55
1986

FD 1" IPIN
2" BELOW
GPS, REF10
4-25-16

NOT COVERED
9-2-16



O.D.O.T. DISTRICT 2 SURVEY OFFICE

PERSONNEL

REFERENCE NO. 10

SHEET 22 OF 31

NOTES Rousos

DATE 04-10-02

ROUTE SR 19

H.C. Homan

WEATHER Sunny

COUNTY Sandusky

R.C. Rousos

TEMP. 50°

TOWNSHIP Green Crk

SECTION 7

T 4 N R 16 E

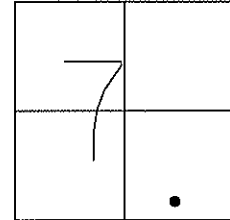
TYPE MONUMENT 1" x 17.5" Re-Rod

ON SURFACE - ~~BELOW~~ on surface

LEFT - ~~C PAVT~~ - ~~RIGHT~~ 31.5' +/-

TO EDGE PAVEMENT

S.L.M. 218+19 +/-



1986 RECORDS:

$\Delta = 45^\circ 19' 40''$ Rt Meas.

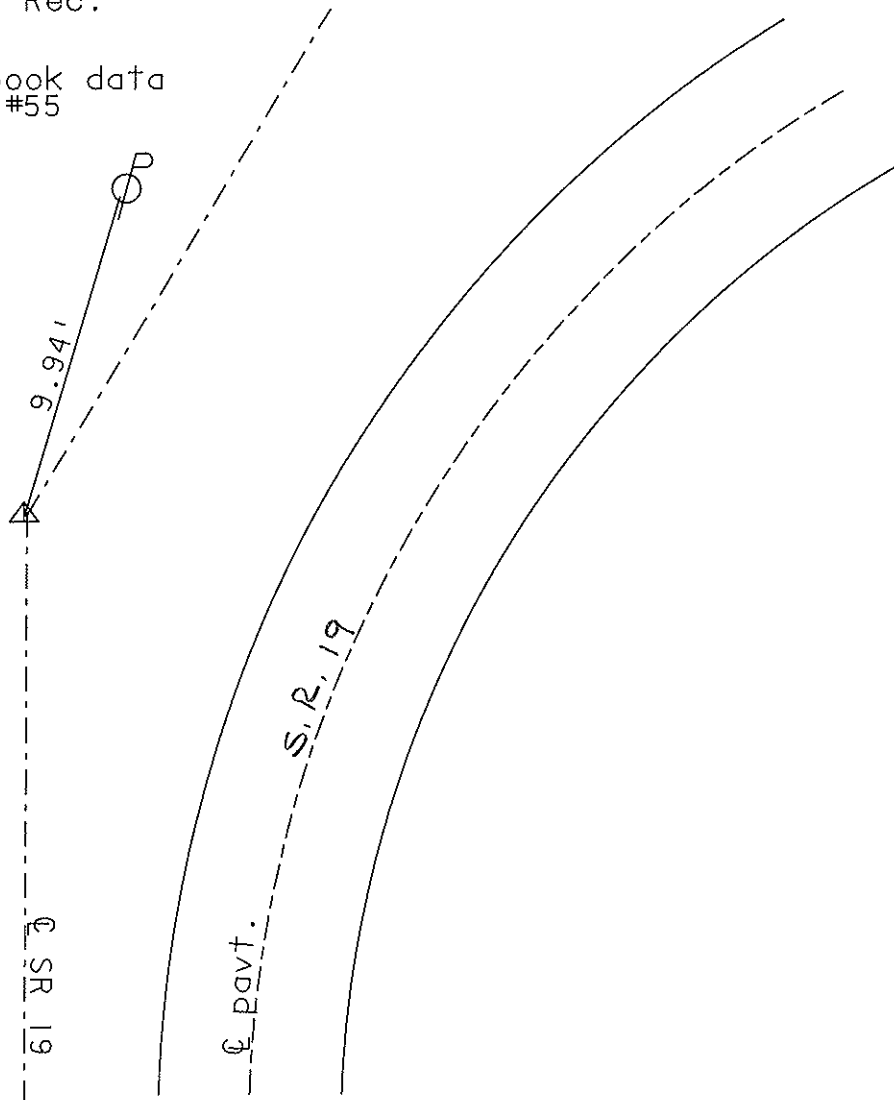
$\Delta = 45^\circ 20' 00''$ Rt Rec.

PI

101+87.95

set from field book data

Ref. Field Book #55



O.D.O.T. DISTRICT 2 SURVEY OFFICE

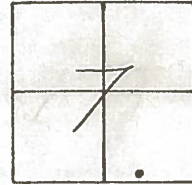
PERSONNEL

NOTES Cronin
 H.C. Ripple
 R.C. Geyman
Barbour

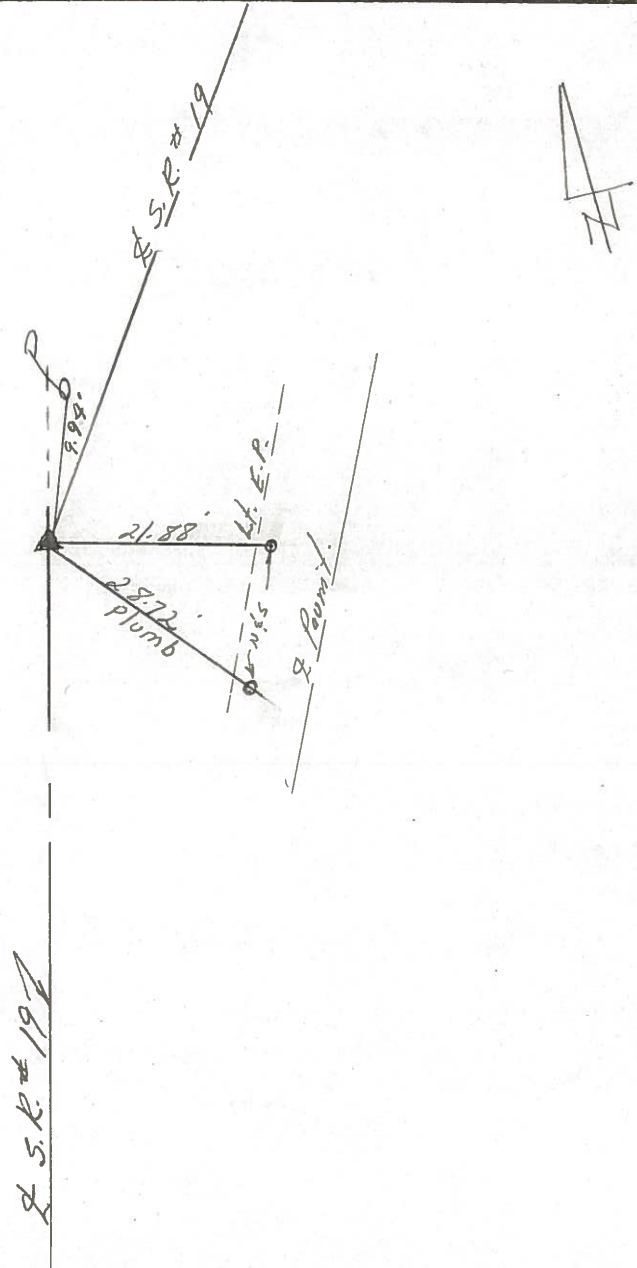
REFERENCE NO. 10
 DRAW 10/01/86
 DATE 11/19/86
 WEATHER sunny
 TEMP. 38°

SHEET 22 OF 31
 ROUTE #19
 COUNTY Sandusky
 TOWNSHIP GREEN CREEK
 SECTION 7
T4 N R16 E

TYPE MONUMENT 1" x 1 1/2" Re-rod
 ON SURFACE - BELOW on surface
 LEFT- & PAV'T. - RIGHT 31.5' ± Lt. & Pav't.
 TO EDGE PAVEMENT
 S.L.M. _____



$A = 45^{\circ} 19' 40''$ Rt. Meas
 $A = 45^{\circ} 20' 00''$ Rt. Rec.
P.I.
101 + 87.95
set from field book data
Ref. Field Book #55



S.R. #19

QD.O.T. DISTRICT 2 SURVEY OFFICE

Sht. 18 of 27

State Route #19

County Sandusky

Township Green Creek

Section 7

T4N, R16E

Personnel Cronin Schneider

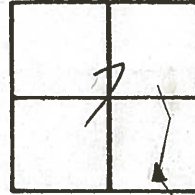
Ripple Barbour

Geyman

Date 8/23/78

Weather sunny

Temp. 85°



10



$\Delta = 45^{\circ} 19' 40''$ Rt. Meas.

$\Delta = 45^{\circ} 20' 00''$ Rt. Rec.

P.I.

101+87.95

Set 1" x 17 1/2" Re-Rod from Field Bk. #55

Date: 7/12/78

21.5' Lt. of Lt. E.P.

