

O.D.O.T. DISTRICT 2 SURVEY OFFICE (USE ONLY)

PERSONNEL

REFERENCE NO. 12 A

SHEET 34 OF 34

NOTES CRONIN

DATE 11/19/86

ROUTE SR 19

H.C. RIPPLE

WEATHER SUNNY

COUNTY SANDUSKY

R.C. GEYMAN

TEMP. 38°

TOWNSHIP GREEN CREEK

BARBOUR

SECTION 6

DWG BY NIESE PID _____

T 4 N R 16 E

TYPE MONUMENT P.K./WASHER

ON SURFACE - ~~BELOW~~ ON

OFFSET 1.3' LT : ~~RT~~

- TO - EDGE PAVEMENT

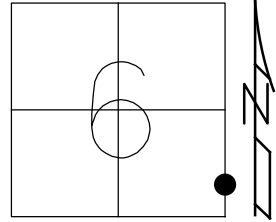
STATION: 279+47

HORZ. DATUM: _____

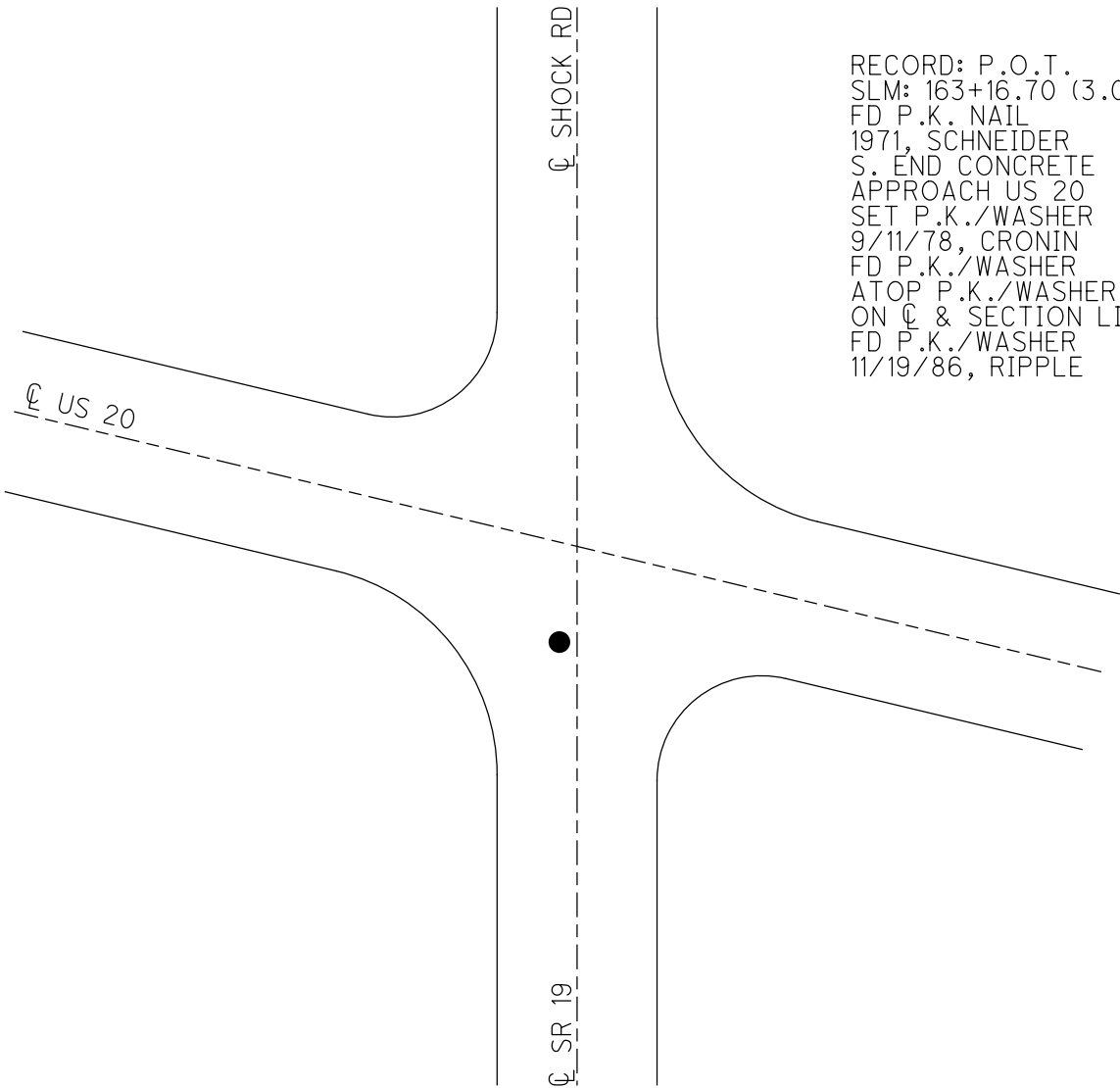
GEOID: _____

GRID: NORTHING: _____

EASTING: _____



RECORD: P.O.T.
SLM: 163+16.70 (3.09)
FD P.K. NAIL
1971, SCHNEIDER
S. END CONCRETE
APPROACH US 20
SET P.K./WASHER
9/11/78, CRONIN
FD P.K./WASHER
ATOP P.K./WASHER
ON CL & SECTION LINE
FD P.K./WASHER
11/19/86, RIPPLE



O.D.O.T. DISTRICT 2 SURVEY OFFICE

PERSONNEL

REFERENCE NO. 12-A

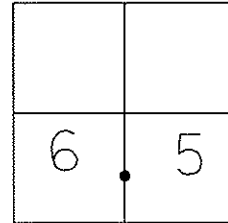
SHEET 31 OF 31

NOTES CRONIN
 H.C. RIPPLE
 R.C. GEYMAN
BARBOUR

DATE 11-19-86
 WEATHER SUNNY
 TEMP. 38°

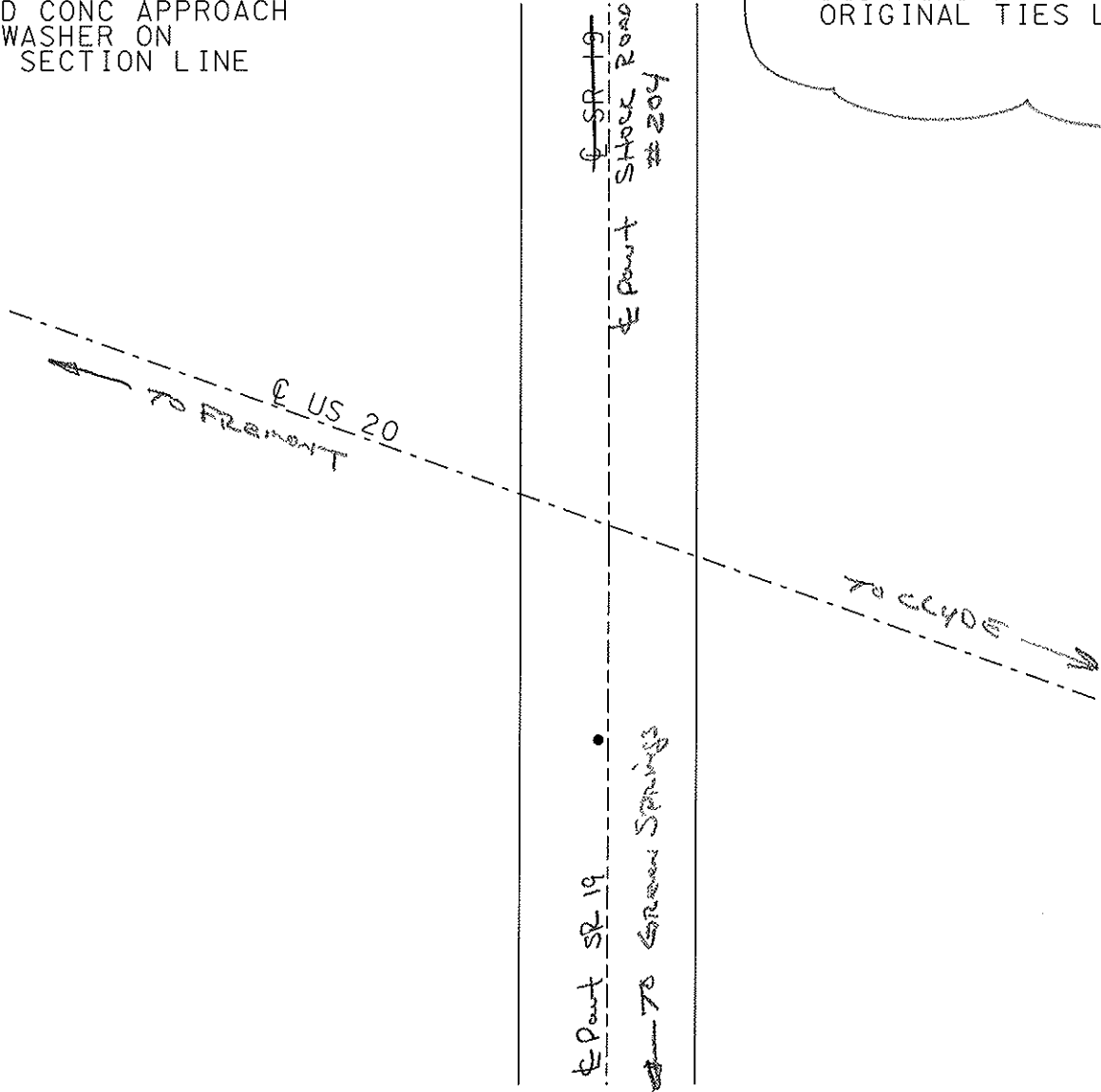
ROUTE SR 19
 COUNTY Sandusky
 TOWNSHIP Green Crk
 SECTION 5 & 6
T 4 N R 16 E

TYPE MONUMENT PK/Washer
 ON SURFACE - ~~BELOW~~ On Surface
 LEFT - ~~C PAVT - RIGHT~~ 1.3'
TO EDGE PAVEMENT
 S.L.M. _____



P.O.T.
 SO END CONC APPROACH
 PK & WASHER ON
 C AND SECTION LINE

^{NOT}
 DID FIND NO
 ORIGINAL TIES LEFT



O.D.O.T. DISTRICT 2 SURVEY OFFICE

PERSONNEL

NOTES Cronin

H.C. Ripple

R.C. Geyman

Barbour

REFERENCE NO. 12A

DRAWN 11/21/86

DATE 11/19/86

WEATHER sunny

TEMP. 38°

SHEET 31 OF 31

ROUTE #19

COUNTY Sandusky

TOWNSHIP Green Creek

SECTION 5 & 6

T 4 N R 16 E

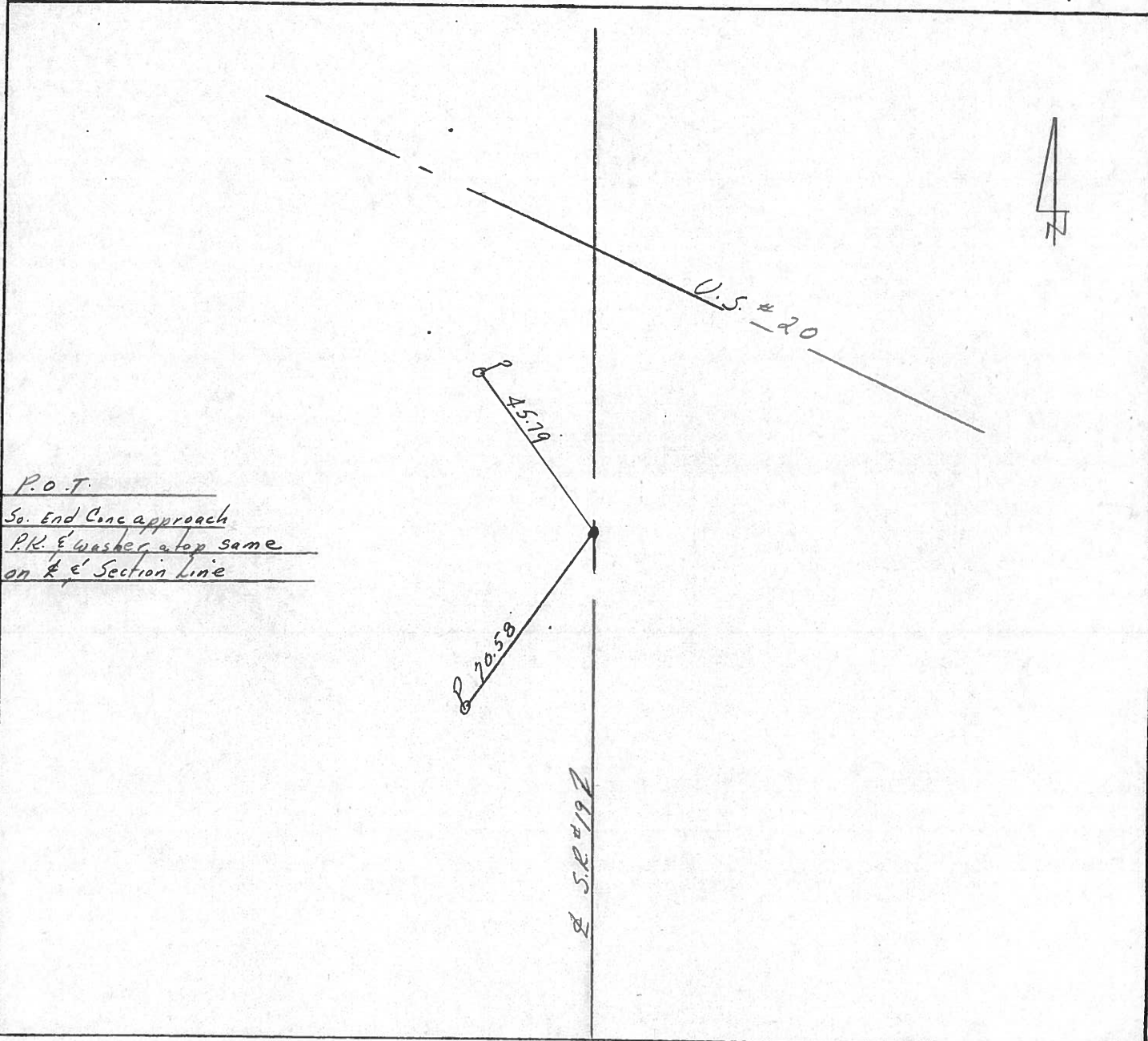
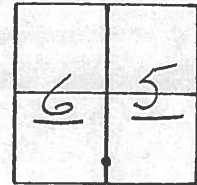
TYPE MONUMENT P.K. & washer

ON SURFACE - BELOW on surface

LEFT - € PAV'T. - RIGHT 1.5' Lt. & Pav't.

TO EDGE PAVEMENT

S.L.M. _____



P.O.T.
So. End Conc approach
P.K. & washer atop same
on & € Section line

Q.D.O.T. DISTRICT 2 SURVEY OFFICE

Sht. 27 of 27

State Route # 19

County Sandusky

Township Green Creek

Section Eastline of 6, West Line of 5

T 4 N, R 6 E

Personnel Cronin Schneider

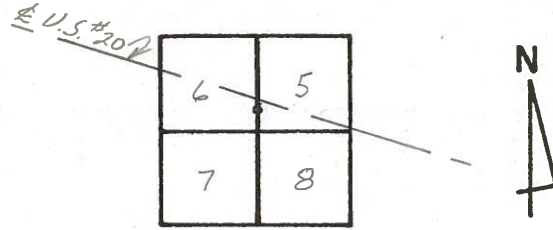
Lippie Barbour

Geyman

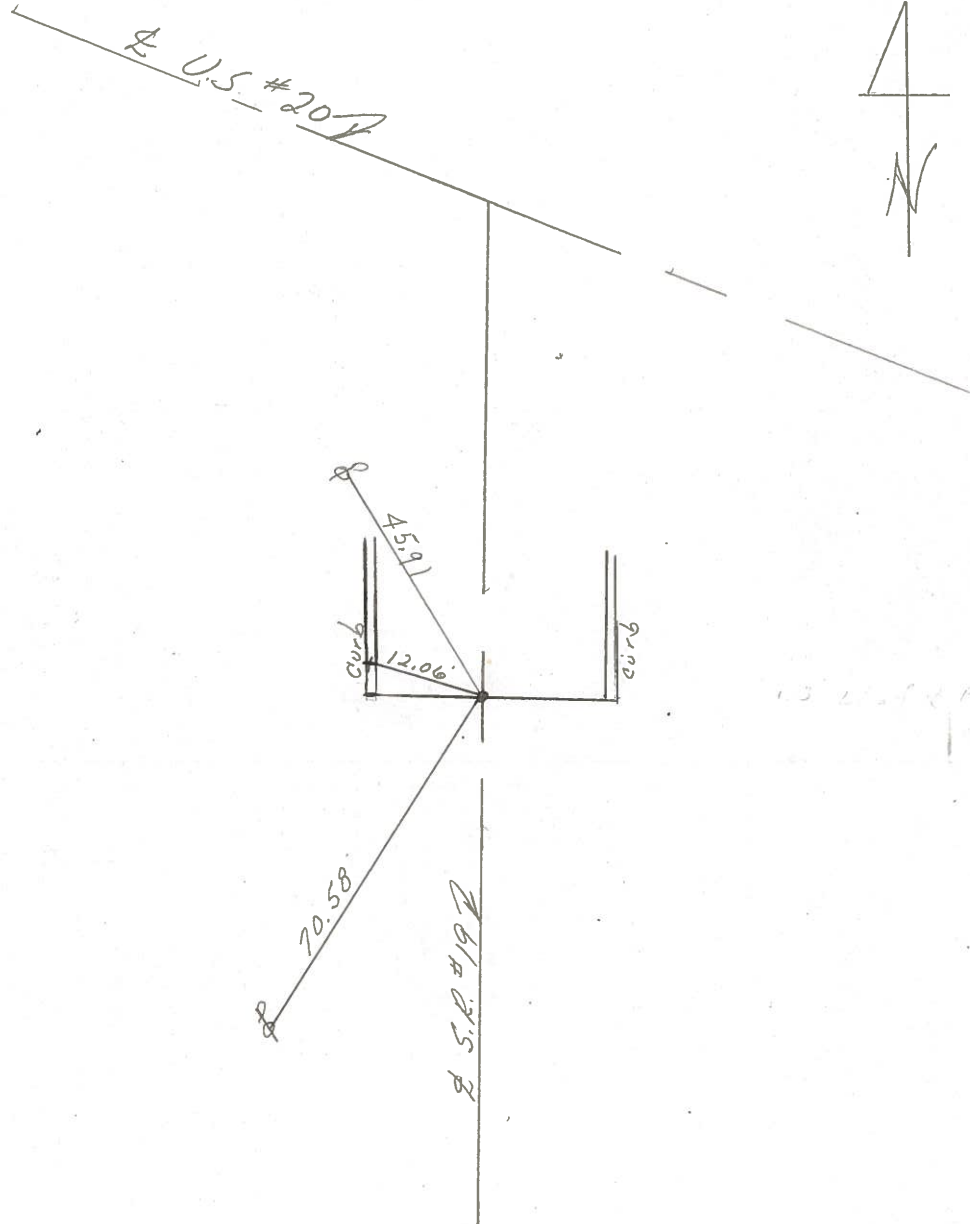
Date 9/11/78

Weather Hazy

Temp. 80°



12-A



P.O.T.
 South End of conc.
 Approach to U.S. #20
 Set P.K. Nail & washer
 on E. Section Line
 1.3' W. of E. of Pavement

PERSONNEL	TITLE	PERSONNEL	TITLE
Schneider			
Mosser			
Barbour			

COUNTY Saratoga DATE 1
 S. R. 19 WEATHER _____
 SEC. 6 h TEMP. _____

DESCRIPTION ies for LEFT CENTER LINE RIGHT JOB NO. _____

