

O.D.O.T. DISTRICT 2 SURVEY OFFICE (USE ONLY)

PERSONNEL

REFERENCE NO. 13 B

SHEET 2 OF 22

NOTES AUBLE

DATE 7/21/21

ROUTE SR 19

H.C. AUBLE

WEATHER FAIR

COUNTY SANDUSKY

R.C. NIESE

TEMP. 71°

TOWNSHIP SANDUSKY

SECTION 21

DWG BY NIESE PID 94329

T 5 N R 15 E

TYPE MONUMENT MONBOX W/ 1" IPIN

ON SURFACE - ~~BELOW~~ ON

OFFSET ☉ PAVEMENT ON LT : RT

- TO - EDGE PAVEMENT

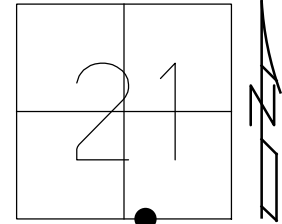
STATION: 581+44.80

HORZ. DATUM: NAD83 (2011)

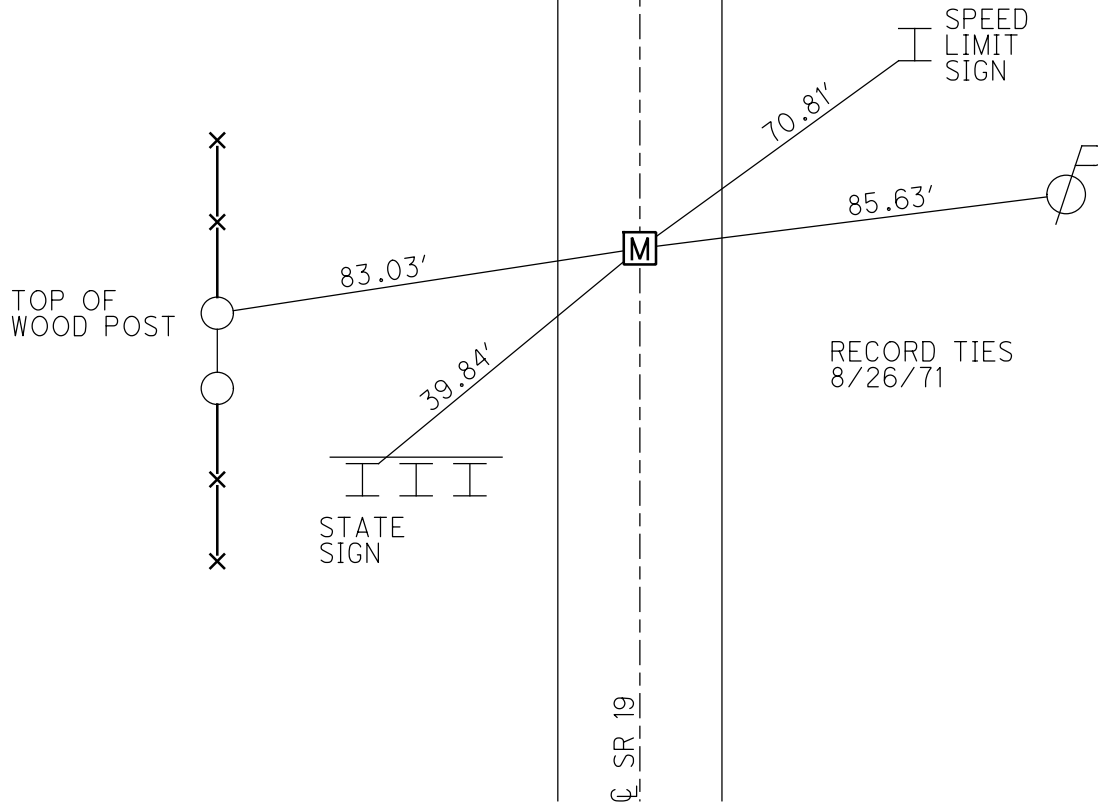
GEOID: 18

GRID: NORTHING: 621597.275

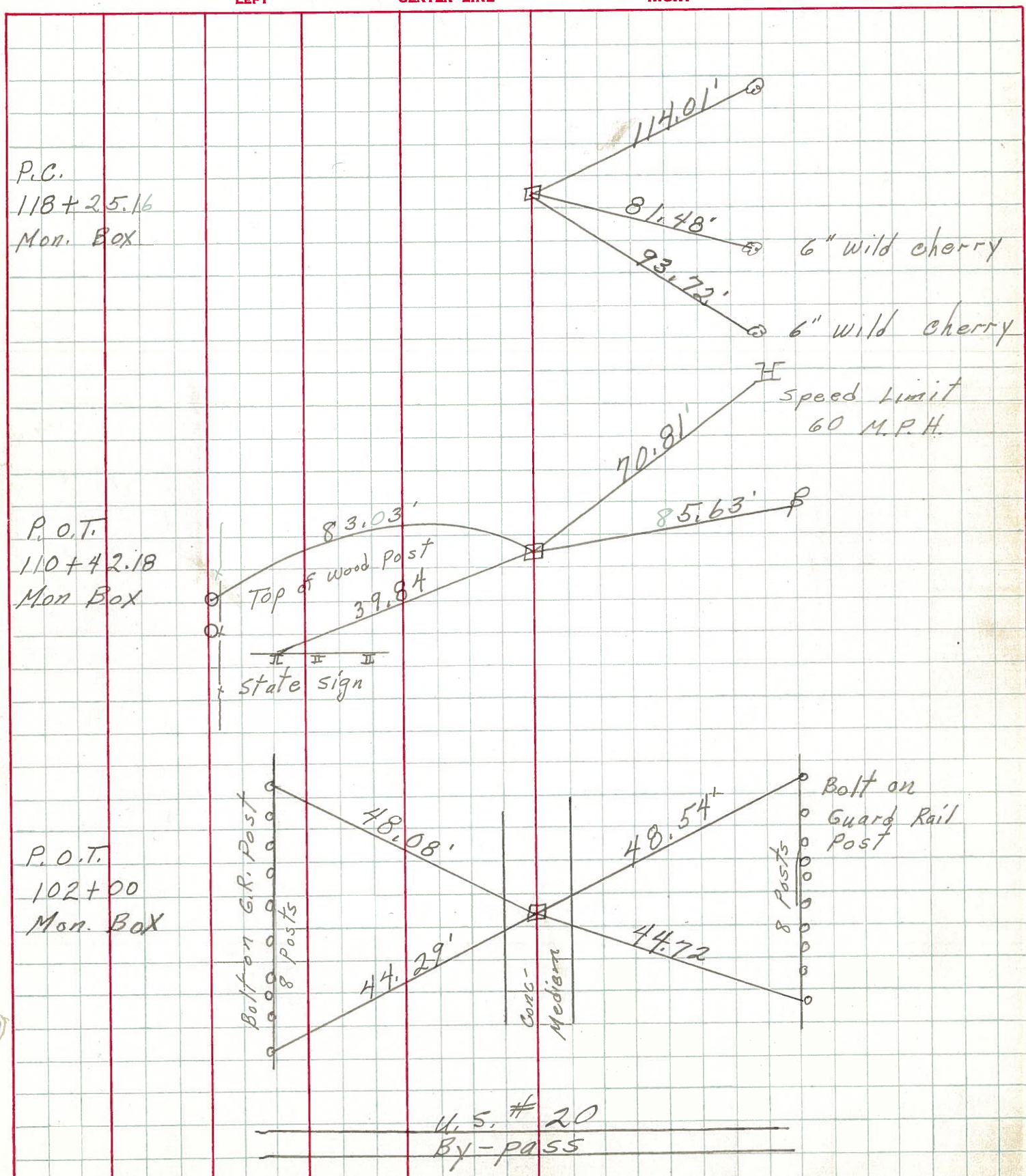
EASTING: 1794330.806



RECORD: P.O.T
 STA 110+42.18
 FD MONBOX
 8/26/71
 FD MONBOX
 W/1" IPIN
 REFB13
 7/21/21, DSA



PERSONNEL _____ TITLE _____ PERSONNEL _____ TITLE _____
 COUNTY Sandusky DATE 8-26-71
 S. R. 19 WEATHER Partly Cloudy
 SEC. 21 TEMP. 75°
 DESCRIPTION U.S. # 20 to Ottawa Co. line JOB NO. _____



P.C.
 118+25.16
 Mon. Box

P.O.T.
 110+42.18
 Mon Box

P.O.T.
 102+00
 Mon. Box