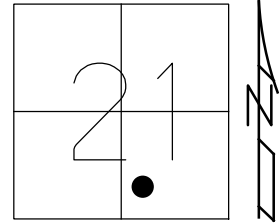


O.D.O.T. DISTRICT 2 SURVEY OFFICE (USE ONLY)

PERSONNEL _____ REFERENCE NO. 13 C SHEET 3 OF 22
 NOTES AUBLE DATE 7/21/21 ROUTE SR 19
 H.C. AUBLE WEATHER FAIR COUNTY SANDUSKY
 R.C. NIESE TEMP. 71° TOWNSHIP SANDUSKY
 DWG BY NIESE PID 94329 SECTION 21
 T 5 N R 15 E

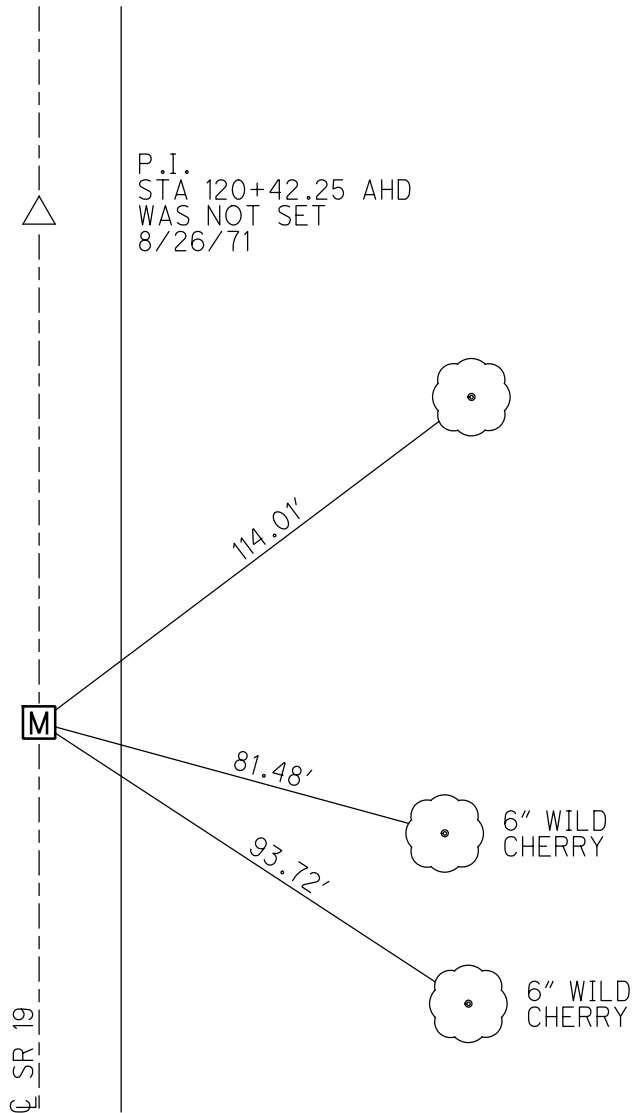
TYPE MONUMENT MONBOX W/ 5/8" IPIN
 ON SURFACE - ~~BELOW~~ ON
 OFFSET Q PAVEMENT ON LT : RT
- TO - EDGE PAVEMENT
 STATION: 589+40.94



HORZ. DATUM: NAD83 (2011) GEOID: 18
 GRID: NORTHING: 622393.172 EASTING: 1794356.650

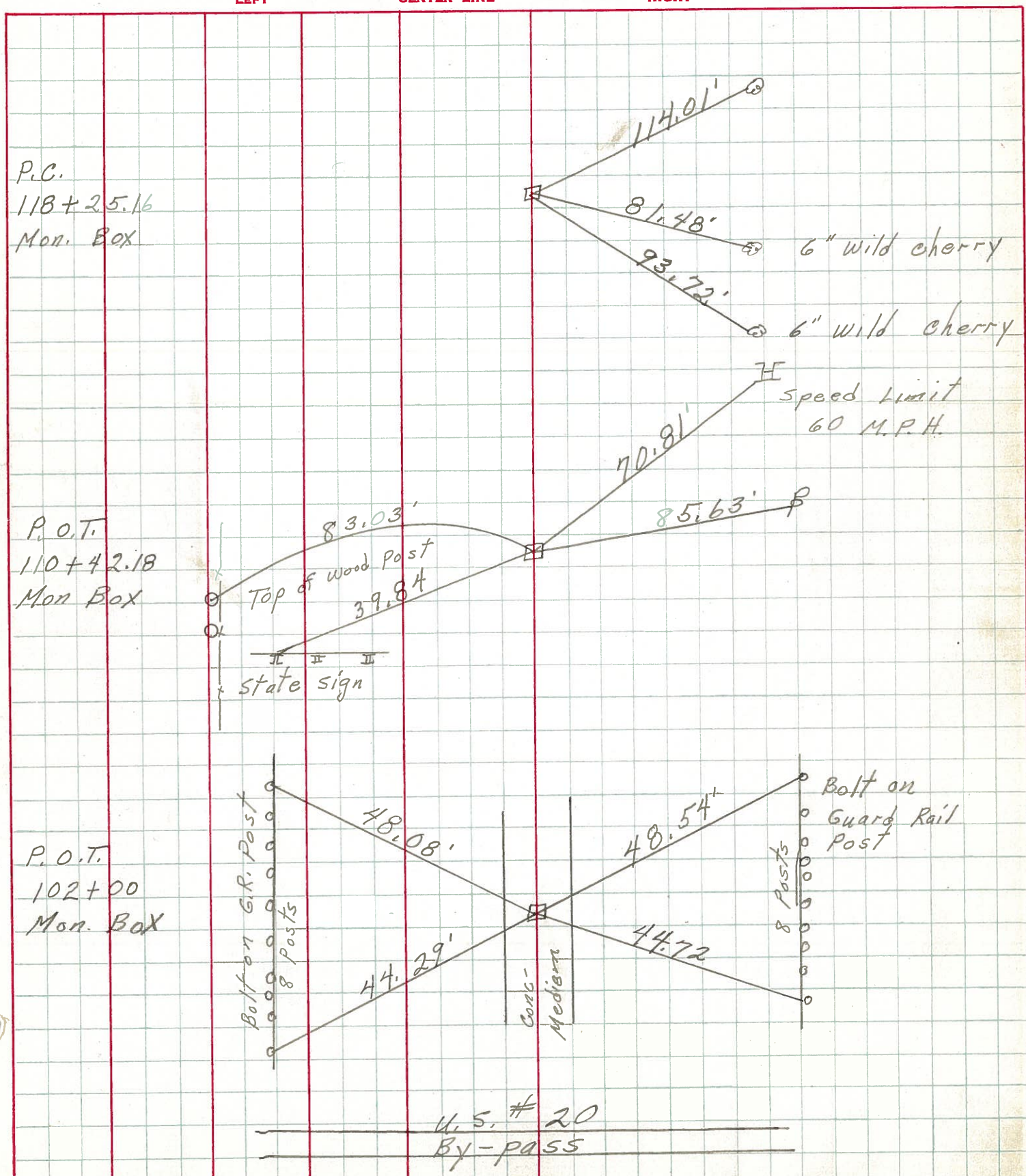
RECORD: P.C.
 STA 118+25.16
 FD MONBOX
 8/26/71
 FD MONBOX
 W/ 5/8" IPIN
 REFC13
 7/21/21, DSA

RECORD TIES
 8/26/71



P.I.
 STA 120+42.25 AHD
 WAS NOT SET
 8/26/71

PERSONNEL _____ TITLE _____ PERSONNEL _____ TITLE _____
 COUNTY Sandusky DATE 8-26-71
 S. R. 19 WEATHER Partly Cloudy
 SEC. 21 TEMP. 75°
 DESCRIPTION U.S. # 20 to Ottawa Co. line JOB NO. _____



P.C.
 118+25.16
 Mon. Box

P.O.T.
 110+42.18
 Mon. Box

P.O.T.
 102+00
 Mon. Box

U.S. # 20
 By-pass