

O.D.O.T. DISTRICT 2 SURVEY OFFICE (USE ONLY)

PERSONNEL

REFERENCE NO. 14

SHEET 5 OF 22

NOTES AUBLE DATE 5/19/21  
 H.C. O'DONNELL WEATHER FAIR  
 R.C. NIESE TEMP. 65°

ROUTE SR 19  
 COUNTY SANDUSKY  
 TOWNSHIP SANDUSKY  
 SECTION 21  
 T 5 N R 15 E

DWG BY NIESE PID 94329

TYPE MONUMENT LG.R.R.SPIKE W/DIMPLE

ON SURFACE - ~~BELOW~~ ON

OFFSET  $\varnothing$  PAVEMENT ON LT : RT

- TO - EDGE PAVEMENT

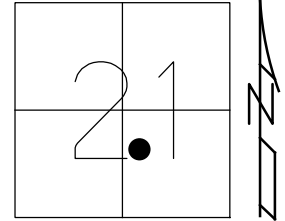
STATION: 597+90.06

HORZ.DATUM: NAD83 (2011)

GEOID: 18

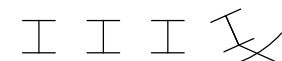
GRID: NORTHING: 623240.620

EASTING: 1794314.145



RECORD:  
 STA 126+71.33  
 FD R.R. SPIKE  
 8/26/71  
 FD LG.R.R.SPIKE  
 REF14  
 5/19/21, DSA

BOLT ON  
 1ST G.R. POST



101.72'

91.59'

RECORD TIES  
 8/26/71

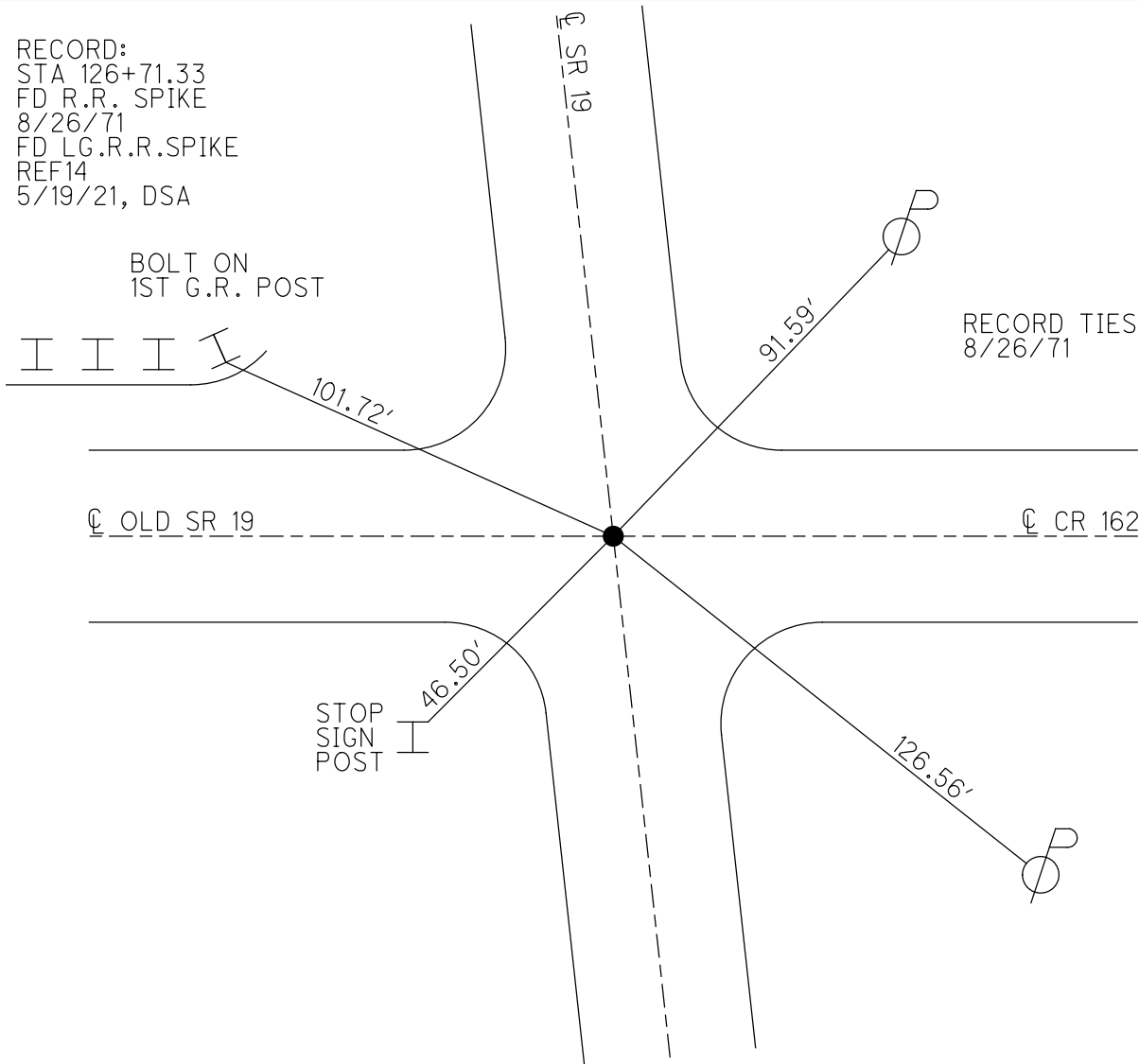
$\varnothing$  OLD SR 19

$\varnothing$  CR 162

STOP  
 SIGN  
 POST

46.50'

126.56'



PERSONNEL	TITLE	PERSONNEL	TITLE
COUNTY <u>Sandusky</u> DATE <u>8-26-71</u>			
S. R. <u>19</u> WEATHER <u>Partly cloudy</u>			
SEC. <u>21</u> TEMP. <u>75°</u>			
DESCRIPTION <u>U.S. #20 to Ottawa Co. Line</u> JOB NO. _____			

