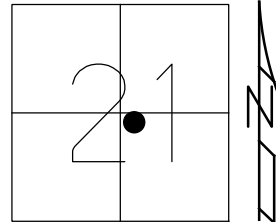


O.D.O.T. DISTRICT 2 SURVEY OFFICE (USE ONLY)

PERSONNEL \_\_\_\_\_ REFERENCE NO. 14 B SHEET 7 OF 22  
 NOTES AUBLE DATE 5/19/21 ROUTE SR 19  
 H.C. O'DONNELL WEATHER FAIR COUNTY SANDUSKY  
 R.C. NIESE TEMP. 65° TOWNSHIP SANDUSKY  
 DWG BY NIESE PID 94329 SECTION 21  
 T 5 N R 15 E

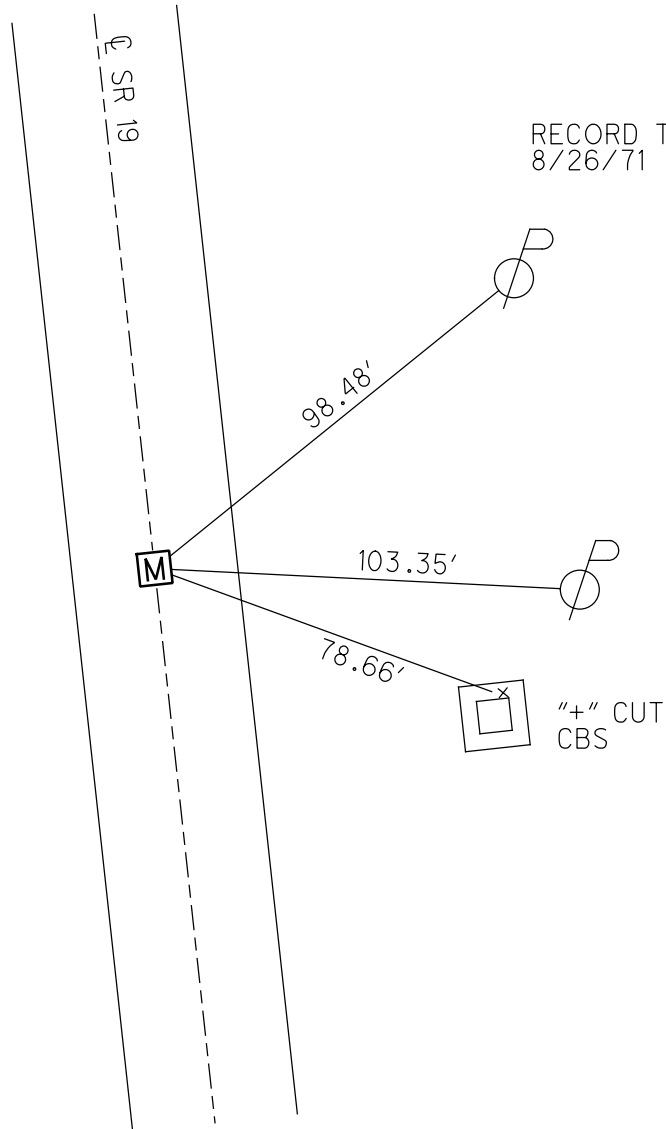
TYPE MONUMENT MONBOX W/ 1" IPIN  
 ON SURFACE - ~~BELOW~~ ON  
 OFFSET  $\text{C}$  PAVEMENT ON LT : RT  
- TO - EDGE PAVEMENT  
 STATION: 605+15.92



HORZ.DATUM: NAD83 (2011) GEOID: NAVD88 2018  
 GRID: NORTHING: 623964.298 EASTING: 1794257.193

RECORD: P.C.  
 STA 134+00.08  
 FD MONBOX  
 8/26/71  
 FD MONBOX  
 W/1" IPIN  
 REFB14  
 5/19/21, DSA  
 1/5/23, TDN

RECORD TIES  
 8/26/71



O.D.O.T. DISTRICT 2 SURVEY OFFICE (USE ONLY)

PERSONNEL

REFERENCE NO. 14 B

SHEET 7 OF 22

NOTES AUBLE

DATE 5/19/21

ROUTE SR 19

H.C. O'DONNELL

WEATHER FAIR

COUNTY SANDUSKY

R.C. NIESE

TEMP. 65°

TOWNSHIP SANDUSKY

SECTION 21

DWG BY NIESE

PID 94329

T 5 N R 15 E

TYPE MONUMENT MONBOX W/ 1" IPIN

ON SURFACE - ~~BELOW~~ ON

OFFSET ☉ PAVEMENT ON LT : RT

- TO - EDGE PAVEMENT

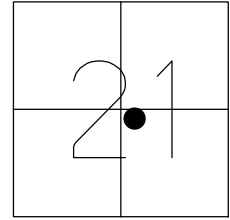
STATION: 605+15.92

HORIZ.DATUM: NAD83 (2011)

GEOID: 18

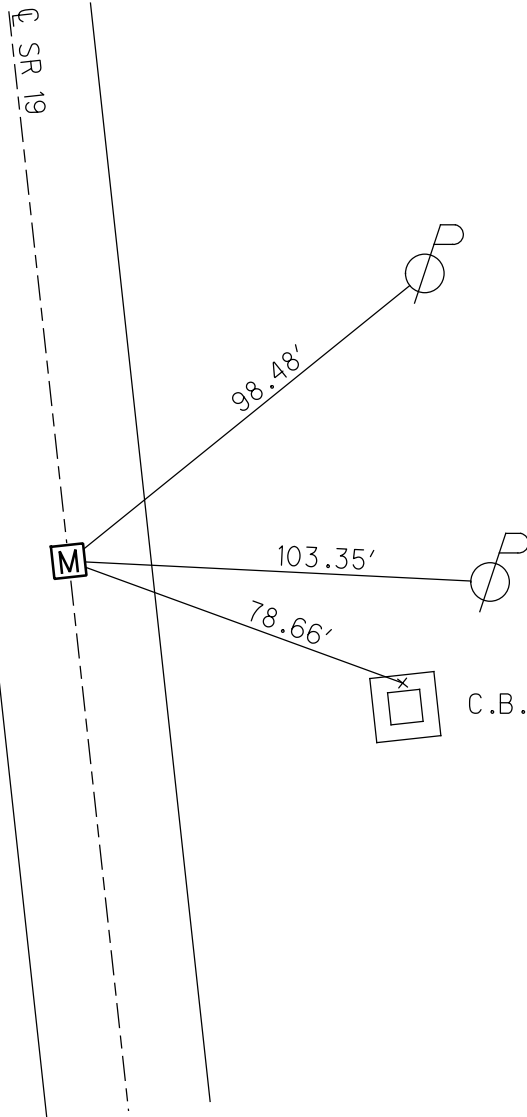
GRID: NORTHING: 623964.298

EASTING: 1794257.193



RECORD: P.C.  
STA 134+00.08  
FD MONBOX  
8/26/71  
FD MONBOX  
W/1" IPIN  
REFB14  
5/19/21, DSA

RECORD TIES  
8/26/71



PERSONNEL	TITLE	PERSONNEL	TITLE
COUNTY <u>Sandusky</u>		DATE <u>8-26-71</u>	
S. R. <u>19</u>		WEATHER <u>partly cloudy</u>	
SEC. <u>21</u>		TEMP. <u>75°</u>	
DESCRIPTION <u>U.S. # 20 to Ottawa, Co Line</u>			JOB NO. _____
	LEFT	CENTER LINE	RIGHT

