

O.D.O.T. DISTRICT 2 SURVEY OFFICE (USE ONLY)

PERSONNEL

REFERENCE NO. 14 D

SHEET 9 OF 22

NOTES AUBLE DATE 5/19/21

H.C. O'DONNELL WEATHER FAIR

R.C. NIESE TEMP. 65°

ROUTE SR 19

COUNTY SANDUSKY

TOWNSHIP SANDUSKY

SECTION 21

DWG BY NIESE PID 94329

T 5 N R 15 E

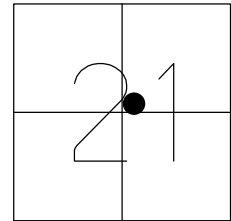
TYPE MONUMENT MONBOX W/1" IPIN

ON SURFACE - BELOW ON

OFFSET \odot PAVEMENT ON LT : RT

- TO - EDGE PAVEMENT

STATION: 609+52.16



HORIZ.DATUM: NAD83 (2011)

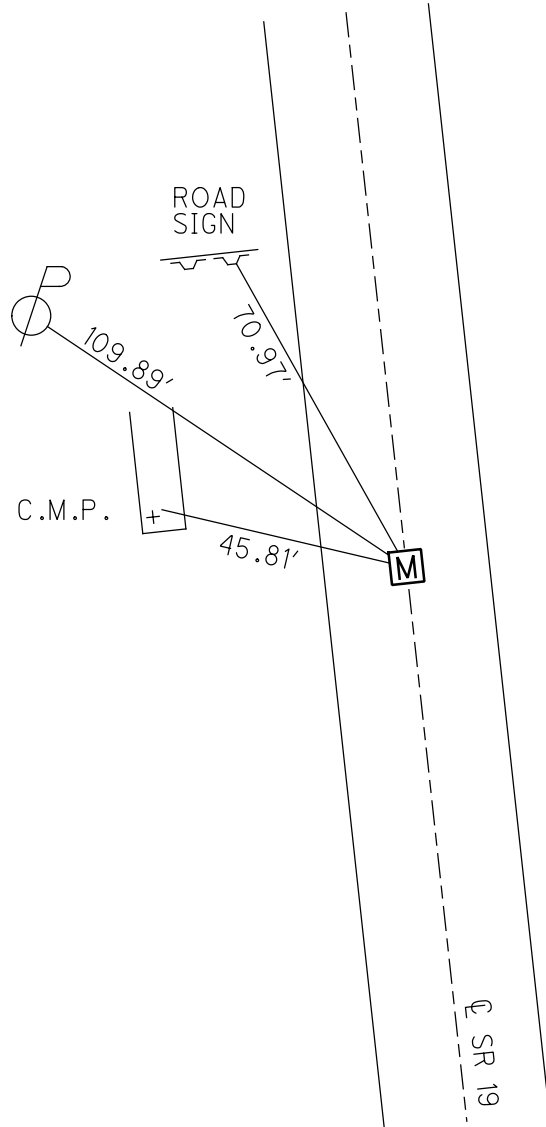
GEOID: NAVD88 2018

GRID: NORTHING: 624399.979

EASTING: 1794235.932

RECORD:
P.O.T. OF R/W
STA 138+36.04
FD MONBOX
8/25/71
FD MONBOX
W/1" IPIN
REFD14
5/19/21, DSA
1/5/23, TDN

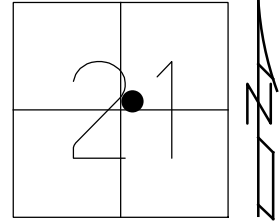
RECORD TIES
8/26/71



O.D.O.T. DISTRICT 2 SURVEY OFFICE (USE ONLY)

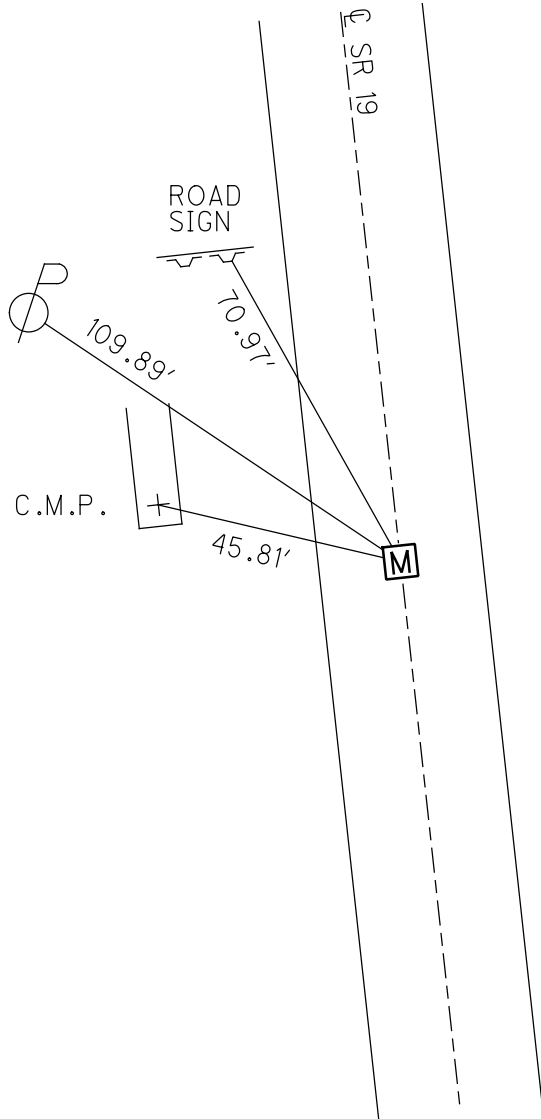
PERSONNEL _____ REFERENCE NO. 14 D SHEET 9 OF 22
 NOTES AUBLE DATE 5/19/21 ROUTE SR 19
 H.C. O'DONNELL WEATHER FAIR COUNTY SANDUSKY
 R.C. NIESE TEMP. 65° TOWNSHIP SANDUSKY
 DWG BY NIESE PID 94329 SECTION 21
 T 5 N R 15 E

TYPE MONUMENT MONBOX W/1" IPIN
 ON SURFACE - BELOW ON
 OFFSET \varnothing PAVEMENT ON LT : RT
- TO - EDGE PAVEMENT
 STATION: 609+52.16



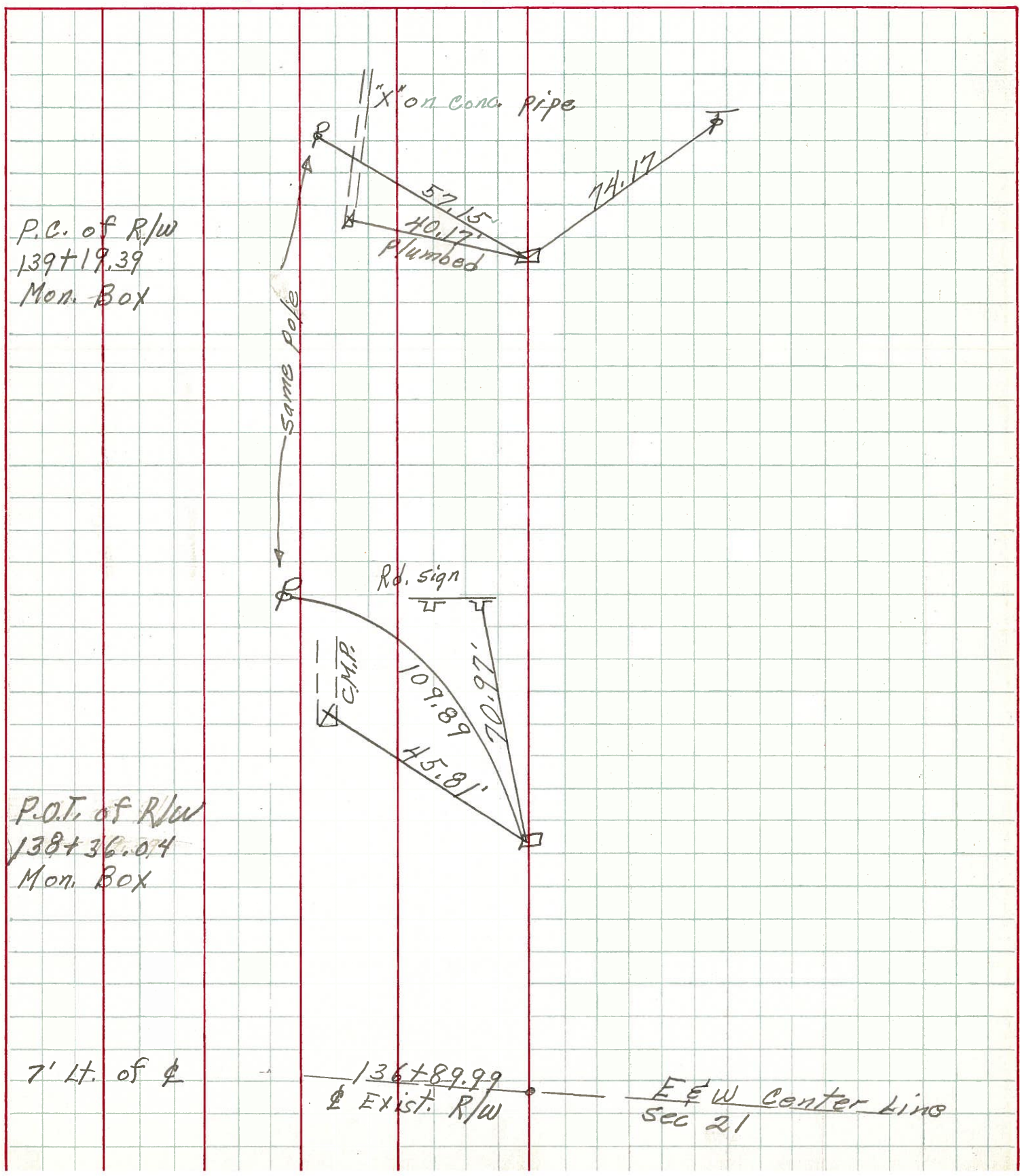
HORZ.DATUM: NAD83 (2011) GEOID: 18
 GRID: NORTHING: 624399.979 EASTING: 1794235.932

RECORD:
 P.O.T. OF R/W
 STA 138+36.04
 FD MONBOX
 8/25/71
 FD MONBOX
 W/1" IPIN
 REF14
 5/19/21, DSA



RECORD TIES
 8/26/71

PERSONNEL	TITLE	PERSONNEL	TITLE
COUNTY <u>Sandusky</u> DATE <u>8-25-71</u>			
S. R. <u>19</u> WEATHER <u>Fair</u>			
SEC. <u>21</u> TEMP. <u>75°</u>			
DESCRIPTION <u>U.S. # 20 to Ottawa, Co. Line</u>			JOB NO. _____
	LEFT	CENTER LINE	RIGHT



P.C. of R/W
 139+19.39
 Mon. Box

P.O.T. of R/W
 138+36.04
 Mon. Box

7' Lt. of φ

136+89.99
 φ Exist. R/W

E & W Center Line
 Sec 21