

O.D.O.T. DISTRICT 2 SURVEY OFFICE (USE ONLY)

PERSONNEL

REFERENCE NO. 14 C

SHEET 8 OF 22

NOTES AUBLE DATE 5/19/21

ROUTE SR 19

H.C. O'DONNELL WEATHER FAIR

COUNTY SANDUSKY

R.C. NIESE TEMP. 65°

TOWNSHIP SANDUSKY

SECTION 21

DWG BY NIESE PID 94329

T 5 N R 15 E

TYPE MONUMENT MONBOX W/ 1" IPIN

ON SURFACE - ~~BELOW~~ ON

OFFSET ☉ PAVEMENT ON LT : RT

- TO - EDGE PAVEMENT

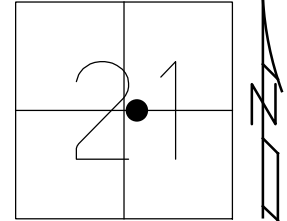
STATION: 607+44.26

HORZ.DATUM: NAD83 (2011)

GEOID: NAVD88 2018

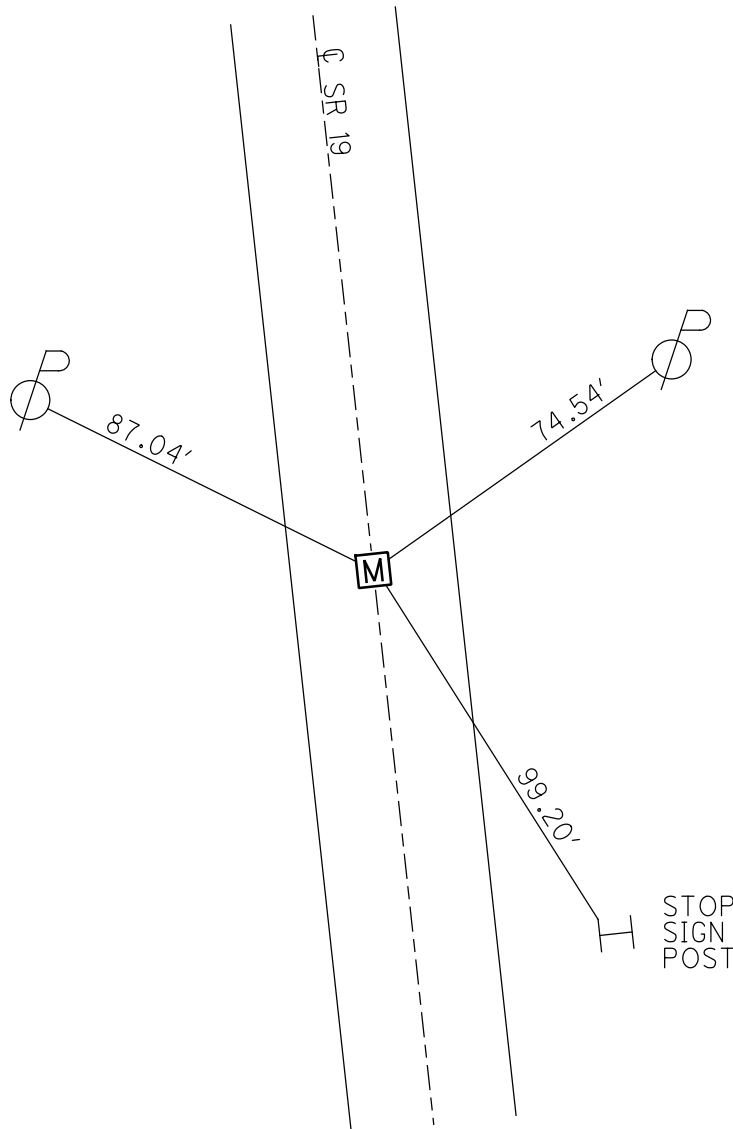
GRID: NORTHING: 624192.241

EASTING: 1794243.934



RECORD: P.T.
 STA 136+28.41
 FD MONBOX
 8/26/71
 FD MONBOX
 W/1" IPIN
 REFC14
 5/19/21, DSA
 1/5/23, TDN

RECORD TIES
 8/26/71



O.D.O.T. DISTRICT 2 SURVEY OFFICE (USE ONLY)

PERSONNEL

REFERENCE NO. 14 C

SHEET 8 OF 22

NOTES AUBLE

DATE 5/19/21

ROUTE SR 19

H.C. O'DONNELL

WEATHER FAIR

COUNTY SANDUSKY

R.C. NIESE

TEMP. 65°

TOWNSHIP SANDUSKY

SECTION 21

DWG BY NIESE PID 94329

T 5 N R 15 E

TYPE MONUMENT MONBOX W/ 1" IPIN

ON SURFACE - ~~BELOW~~ ON

OFFSET Q PAVEMENT ON LT : RT
- TO - EDGE PAVEMENT

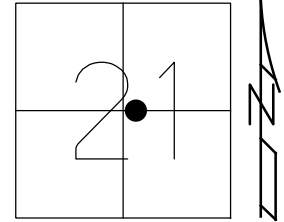
STATION: 607+44.26

HORZ. DATUM: NAD83 (2011)

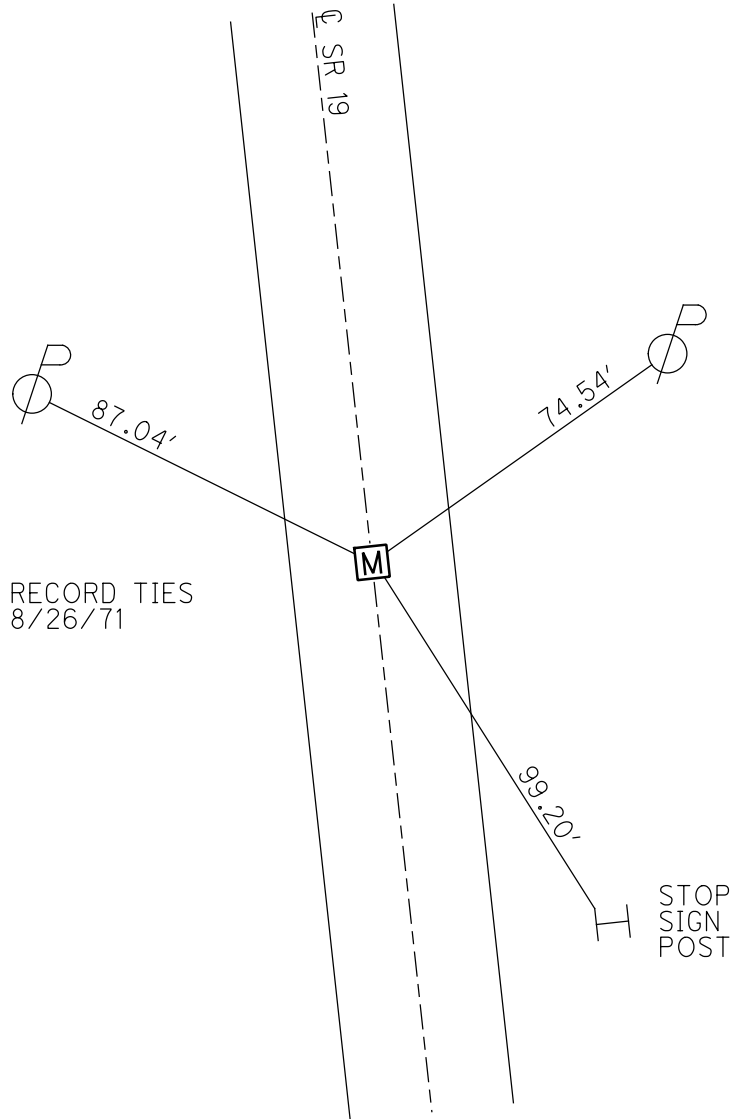
GEOID: 18

GRID: NORTHING: 624192.241

EASTING: 1794243.934



RECORD: P.T.
 STA 136+28.41
 FD MONBOX
 8/26/71
 FD MONBOX
 W/1" IPIN
 REFC14
 5/19/21, DSA



PERSONNEL	TITLE	PERSONNEL	TITLE
COUNTY <u>Sandusky</u>		DATE <u>8-26-71</u>	
S. R. <u>19</u>		WEATHER <u>partly cloudy</u>	
SEC. <u>21</u>		TEMP. <u>75°</u>	
DESCRIPTION <u>U.S. # 20 to Ottawa, Co Line</u>			JOB NO.

