

O.D.O.T. DISTRICT 2 SURVEY OFFICE (USE ONLY)

PERSONNEL

REFERENCE NO. 14 E

SHEET 10 OF 22

NOTES AUBLE

DATE 5/19/21

ROUTE SR 19

H.C. O'DONNELL

WEATHER FAIR

COUNTY SANDUSKY

R.C. NIESE

TEMP. 65°

TOWNSHIP SANDUSKY

SECTION 21

DWG BY NIESE PID 94329

T 5 N R 15 E

TYPE MONUMENT MONBOX

ON SURFACE - ~~BELOW~~ ON

OFFSET ☉ PAVEMENT ON LT : RT

- TO - EDGE PAVEMENT

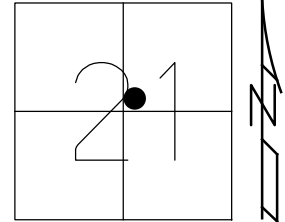
STATION: 610+35.59

HORZ.DATUM: NAD83 (2011)

GEOID: NAVD88 2018

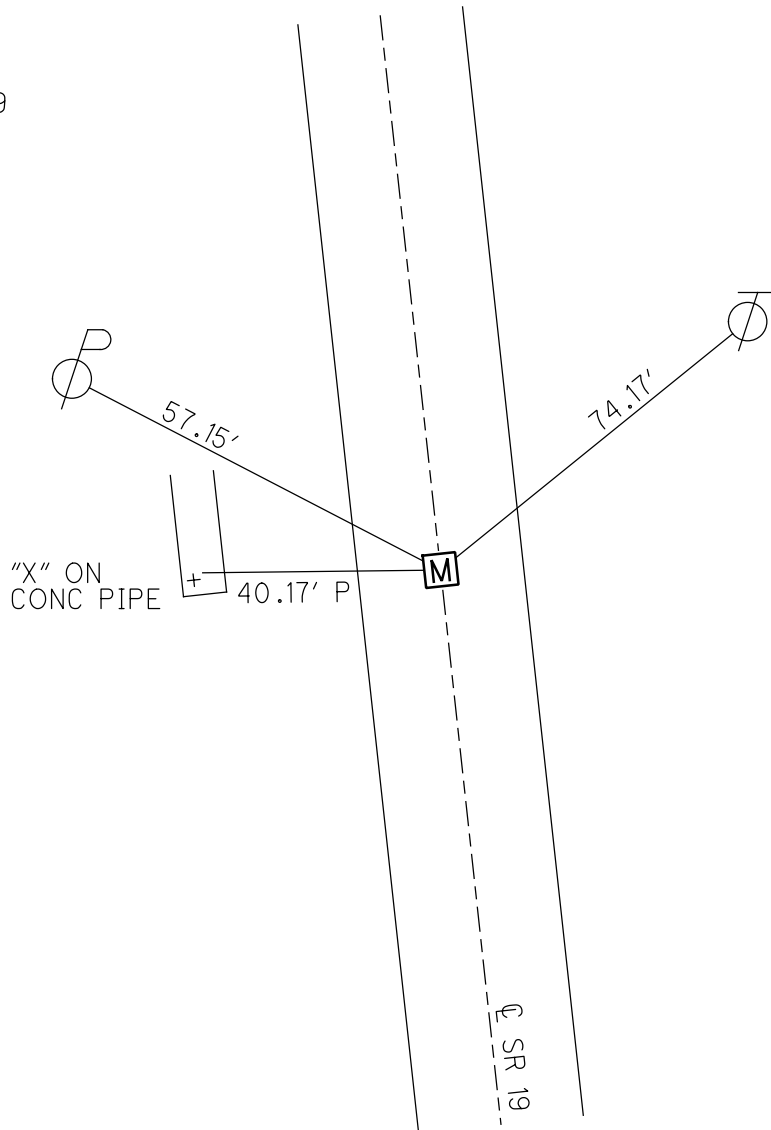
GRID: NORTHING: 624483.352

EASTING: 1794232.706



RECORD:  
P.C. OF R/W  
STA 139+19.39  
FD MONBOX  
8/25/71  
FD MONBOX  
SHOT LID  
REFE14  
5/19/21, DSA  
1/5/23, TDN

RECORD TIES  
8/26/71



O.D.O.T. DISTRICT 2 SURVEY OFFICE (USE ONLY)

PERSONNEL

REFERENCE NO. 14 E

SHEET 10 OF 22

NOTES AUBLE DATE 5/19/21  
 H.C. O'DONNELL WEATHER FAIR  
 R.C. NIESE TEMP. 65°

ROUTE SR 19  
 COUNTY SANDUSKY  
 TOWNSHIP SANDUSKY  
 SECTION 21

DWG BY NIESE PID 94329

T 5 N R 15 E

TYPE MONUMENT MONBOX

ON SURFACE - ~~BELOW~~ ON

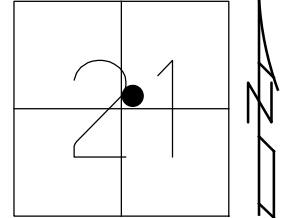
OFFSET Q PAVEMENT ON LT : RT

- TO - EDGE PAVEMENT

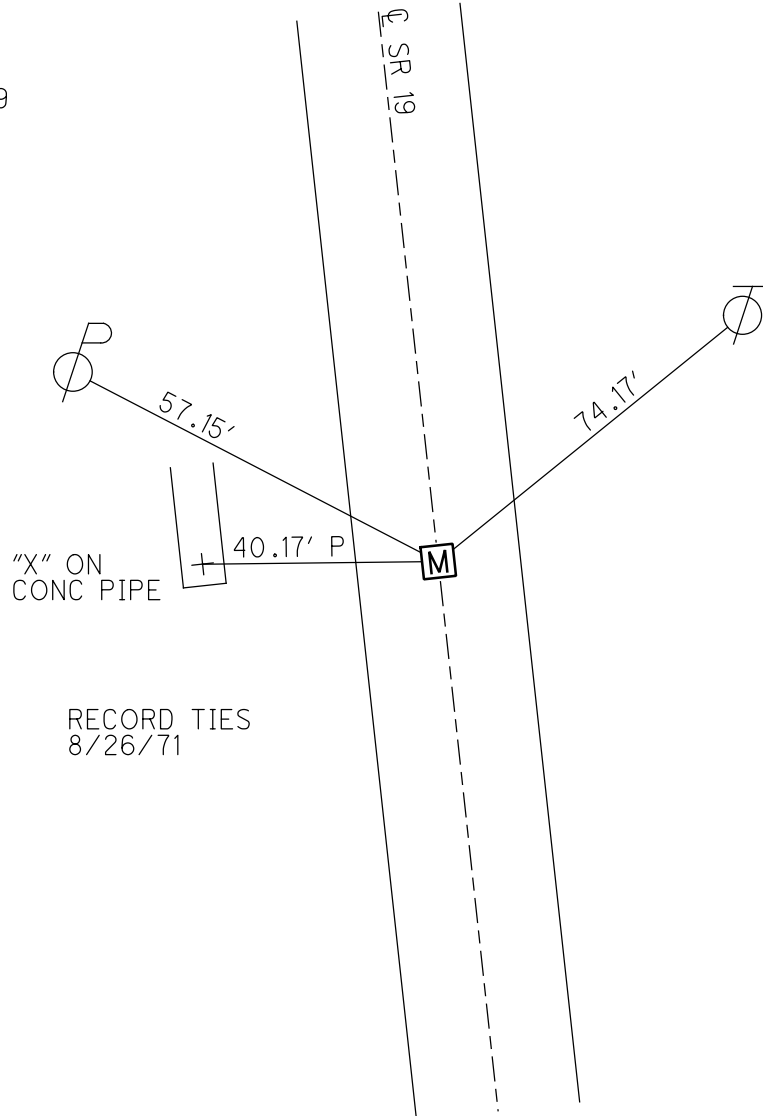
STATION: 610+35.59

HORZ.DATUM: NAD83 (2011) GEOID: 18

GRID: NORTHING: 624483.352 EASTING: 1794232.706



RECORD:  
 P.C. OF R/W  
 STA 139+19.39  
 FD MONBOX  
 8/25/71  
 FD MONBOX  
 SHOT LID  
 REFE14  
 5/19/21, DSA



RECORD TIES  
 8/26/71

PERSONNEL	TITLE	PERSONNEL	TITLE
COUNTY <u>Sandusky</u> DATE <u>8-25-71</u>			
S. R. <u>19</u> WEATHER <u>Fair</u>			
SEC. <u>21</u> TEMP. <u>75°</u>			
DESCRIPTION <u>U.S. # 20 to Ottawa, Co. Line</u>			JOB NO. _____

