

O.D.O.T. DISTRICT 2 SURVEY OFFICE (USE ONLY)

PERSONNEL

REFERENCE NO. 14 H

SHEET 13 OF 22

NOTES AUBLE

DATE 5/19/21

ROUTE SR 19

H.C. O'DONNELL

WEATHER FAIR

COUNTY SANDUSKY

R.C. NISES

TEMP. 65°

TOWNSHIP SANDUSKY

SECTION 21

DWG BY NIESE

PID 94329

T 5 N R 15 E

TYPE MONUMENT MONBOX

ON SURFACE - ~~BELOW~~ ON

OFFSET ☉ PAVEMENT ON LT : RT

- TO - EDGE PAVEMENT

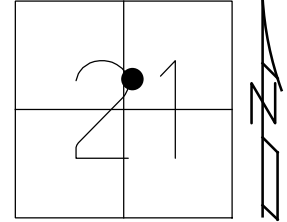
STATION: 615+85.48

HORIZ.DATUM: NAD83 (2011)

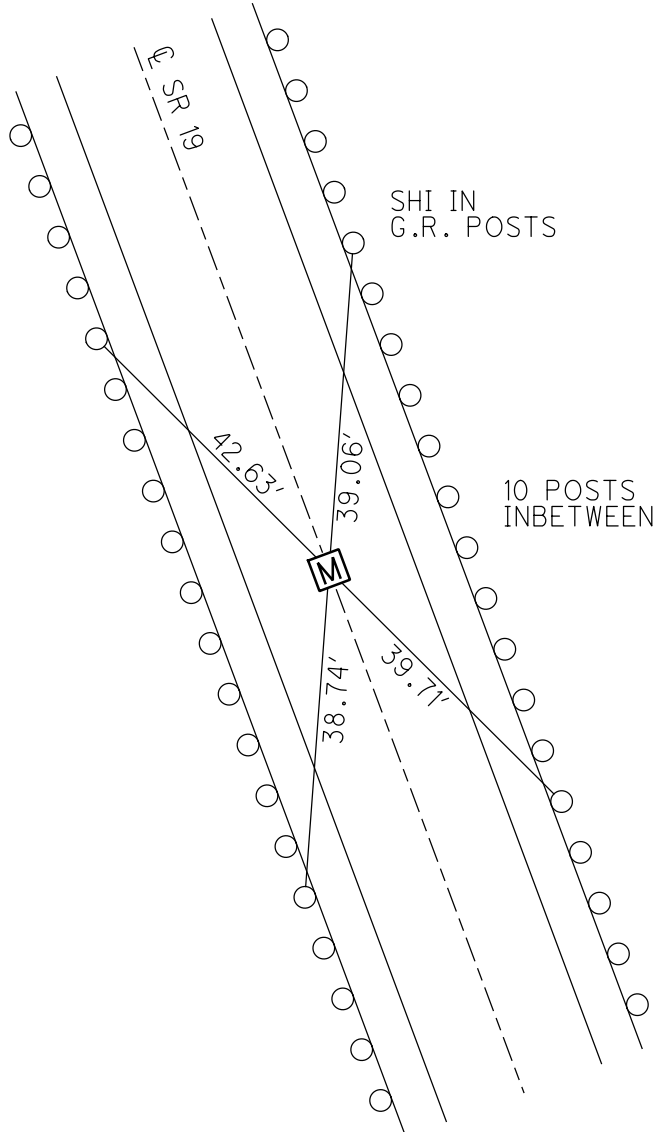
GEOID: NAVD88 2018

GRID: NORTHING: 625005.689

EASTING: 1794080.957



RECORD:  
 P.T. OF R/W  
 STA 144+69.36  
 FD MONBOX  
 8/26/71  
 FD MONBOX  
 SHOT LID  
 REFH14  
 5/19/21, DSA  
 1/5/23, TDN



RECORD TIES  
 8/26/71

O.D.O.T. DISTRICT 2 SURVEY OFFICE (USE ONLY)

PERSONNEL

REFERENCE NO. 14 H

SHEET 13 OF 22

NOTES AUBLE

DATE 5/19/21

ROUTE SR 19

H.C. O'DONNELL

WEATHER FAIR

COUNTY SANDUSKY

R.C. NISES

TEMP. 65°

TOWNSHIP SANDUSKY

SECTION 21

DWG BY NIESE PID 94329

T 5 N R 15 E

TYPE MONUMENT MONBOX

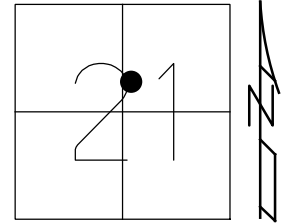
ON SURFACE - ~~BELOW~~ ON

OFFSET  $\varnothing$  PAVEMENT ON LT : RT  
- TO - EDGE PAVEMENT

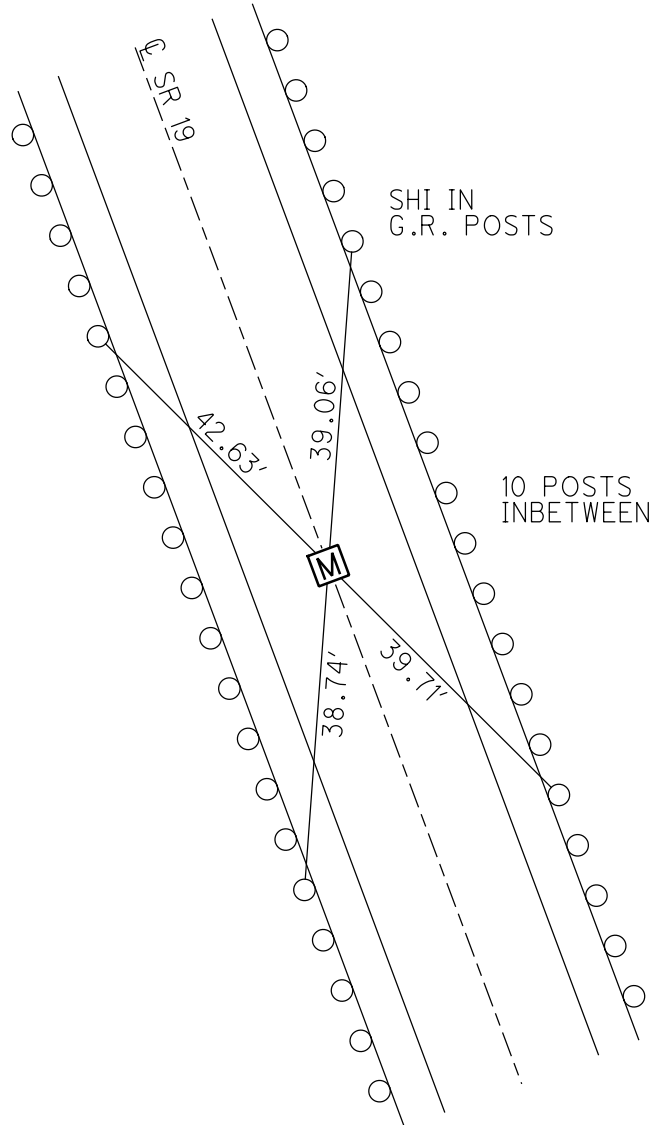
STATION: 615+85.48

HORZ.DATUM: NAD83 (2011) GEOID: 18

GRID: NORTHING: 625005.689 EASTING: 1794080.957



RECORD:  
 P.T. OF R/W  
 STA 144+69.36  
 FD MONBOX  
 8/26/71  
 FD MONBOX  
 SHOT LID  
 REFH14  
 5/19/21, DSA



RECORD TIES  
 8/26/71

PERSONNEL	TITLE	PERSONNEL	TITLE	COUNTY	<u>Sandusky</u>	DATE	<u>8-26-71</u>	
_____	_____	_____	_____	S. R.	<u>19</u>	WEATHER	<u>Fair</u>	
_____	_____	_____	_____	SEC.	<u>21</u>	TEMP.	<u>80°</u>	
DESCRIPTION	<u>U.S. # 20 to Ottawa, Co. Line</u>						JOB NO.	_____
	LEFT	CENTER LINE	RIGHT					

