

O.D.O.T. DISTRICT 2 SURVEY OFFICE (USE ONLY)

PERSONNEL

REFERENCE NO. 14 I

SHEET 14 OF 22

NOTES AUBLE DATE 5/19/21

ROUTE SR 19

H.C. O'DONNELL WEATHER FAIR

COUNTY SANDUSKY

R.C. NIESE TEMP. 65°

TOWNSHIP SANDUSKY

DWG BY NIESE PID 94329

SECTION 21

T 5 N R 15 E

TYPE MONUMENT MONBOX

ON SURFACE - ~~BELOW~~ ON

OFFSET Q PAVEMENT ON LT : RT

- TO - EDGE PAVEMENT

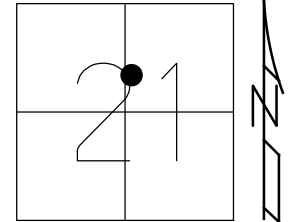
STATION: 615+85.48

HORZ. DATUM: NAD83 (2011)

GEOID: NAVD88 2018

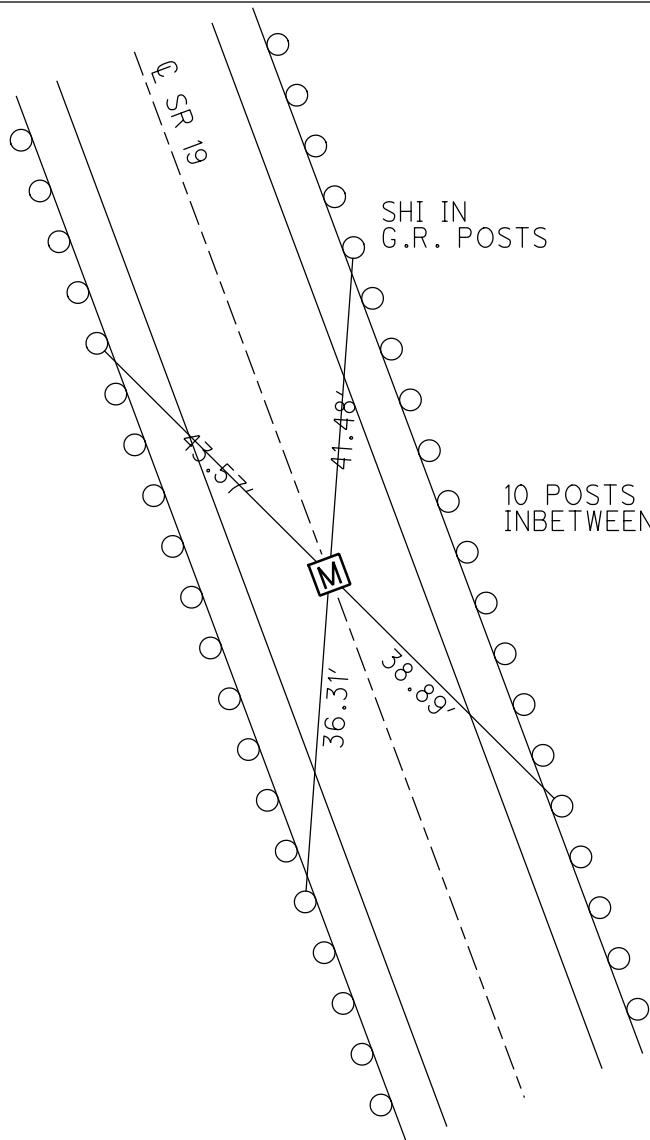
GRID: NORTHING: 625149.866

EASTING: 1793997.169



RECORD:
P.C. OF R/W
STA 146+36.06
FD MONBOX
8/30/71
FD MONBOX
SHOT LID
REF114
5/19/21, DSA
1/5/23, TDN

RECORD TIES
8/26/71



O.D.O.T. DISTRICT 2 SURVEY OFFICE (USE ONLY)

PERSONNEL

REFERENCE NO. 14 I

SHEET 14 OF 22

NOTES AUBLE

DATE 5/19/21

ROUTE SR 19

H.C. O'DONNELL

WEATHER FAIR

COUNTY SANDUSKY

R.C. NIESE

TEMP. 65°

TOWNSHIP SANDUSKY

DWG BY NIESE

PID 94329

SECTION 21

T 5 N R 15 E

TYPE MONUMENT MONBOX

ON SURFACE - ~~BELOW~~ ON

OFFSET \varnothing PAVEMENT ON LT : RT
- TO - EDGE PAVEMENT

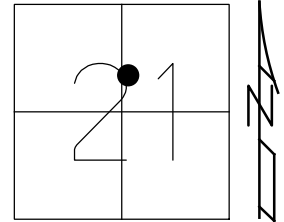
STATION: 615+85.48

HORIZ.DATUM: NAD83 (2011)

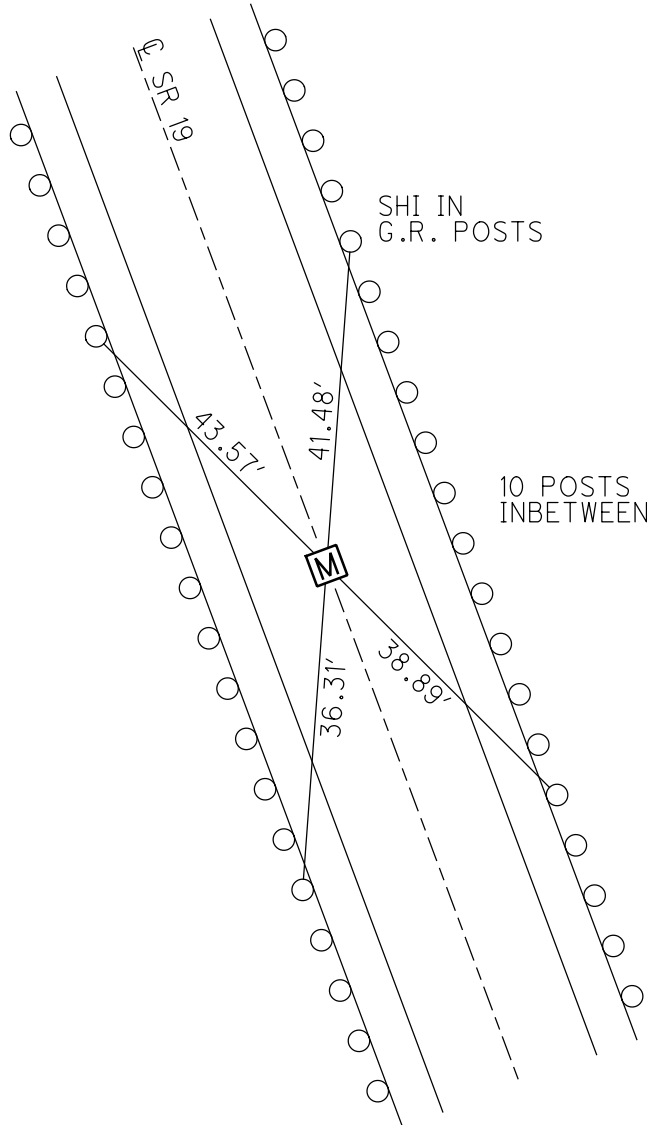
GEOID: 18

GRID: NORTHING: 625149.866

EASTING: 1793997.169



RECORD:
 P.C. OF R/W
 STA 146+36.06
 FD MONBOX
 8/30/71
 FD MONBOX
 SHOT LID
 REF114
 5/19/21, DSA



RECORD TIES
 8/26/71

PERSONNEL TITLE PERSONNEL TITLE

COUNTY Sandusky DATE 8-30-71

S. R. 19 WEATHER Hot

SEC. 21 TEMP. 85°

DESCRIPTION U.S. #20 to Ottawa, Co. Line LEFT CENTER LINE RIGHT JOB NO.

